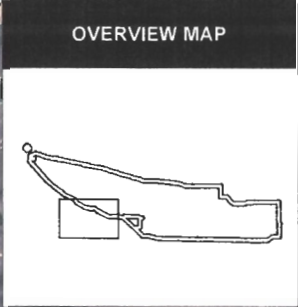
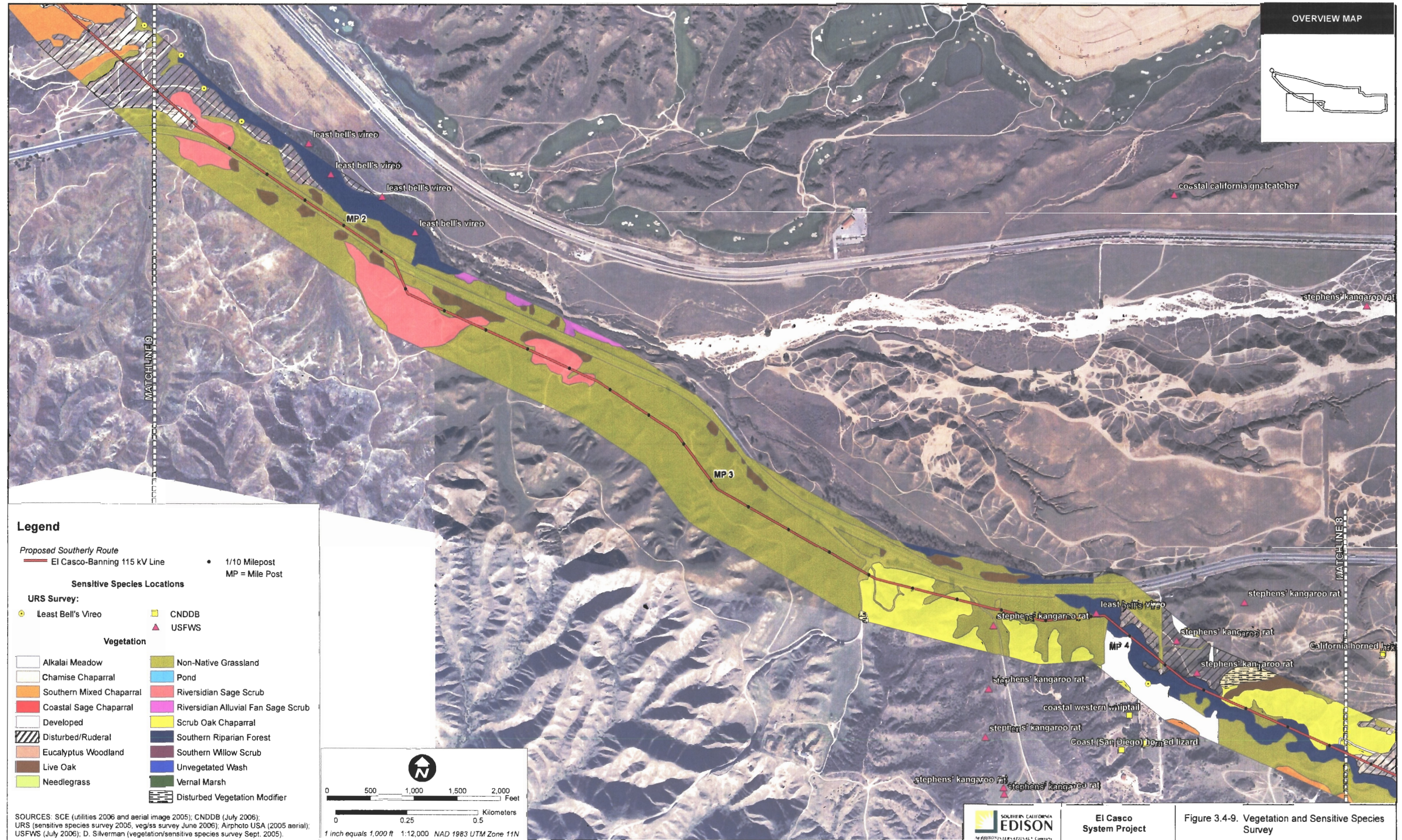
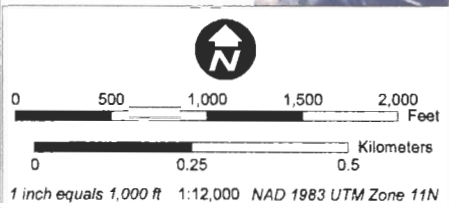


Figure 3.4-9, Vegetation and Sensitive Species Survey



Legend

- Proposed Southern Route**
 El Casco-Banning 115 kV Line
- 1/10 Milepost
 MP = Mile Post
- Sensitive Species Locations**
- URS Survey:**
 Least Bell's Vireo (yellow circle)
 CNDDB (yellow square)
 USFWS (red triangle)
- Vegetation**
- Alkalai Meadow
 - Chamise Chaparral
 - Southern Mixed Chaparral
 - Coastal Sage Chaparral
 - Developed
 - Disturbed/Ruderal
 - Eucalyptus Woodland
 - Live Oak
 - Needlegrass
 - Non-Native Grassland
 - Pond
 - Riverside Sage Scrub
 - Riverside Alluvial Fan Sage Scrub
 - Scrub Oak Chaparral
 - Southern Riparian Forest
 - Southern Willow Scrub
 - Unvegetated Wash
 - Vernal Marsh
 - Disturbed Vegetation Modifier



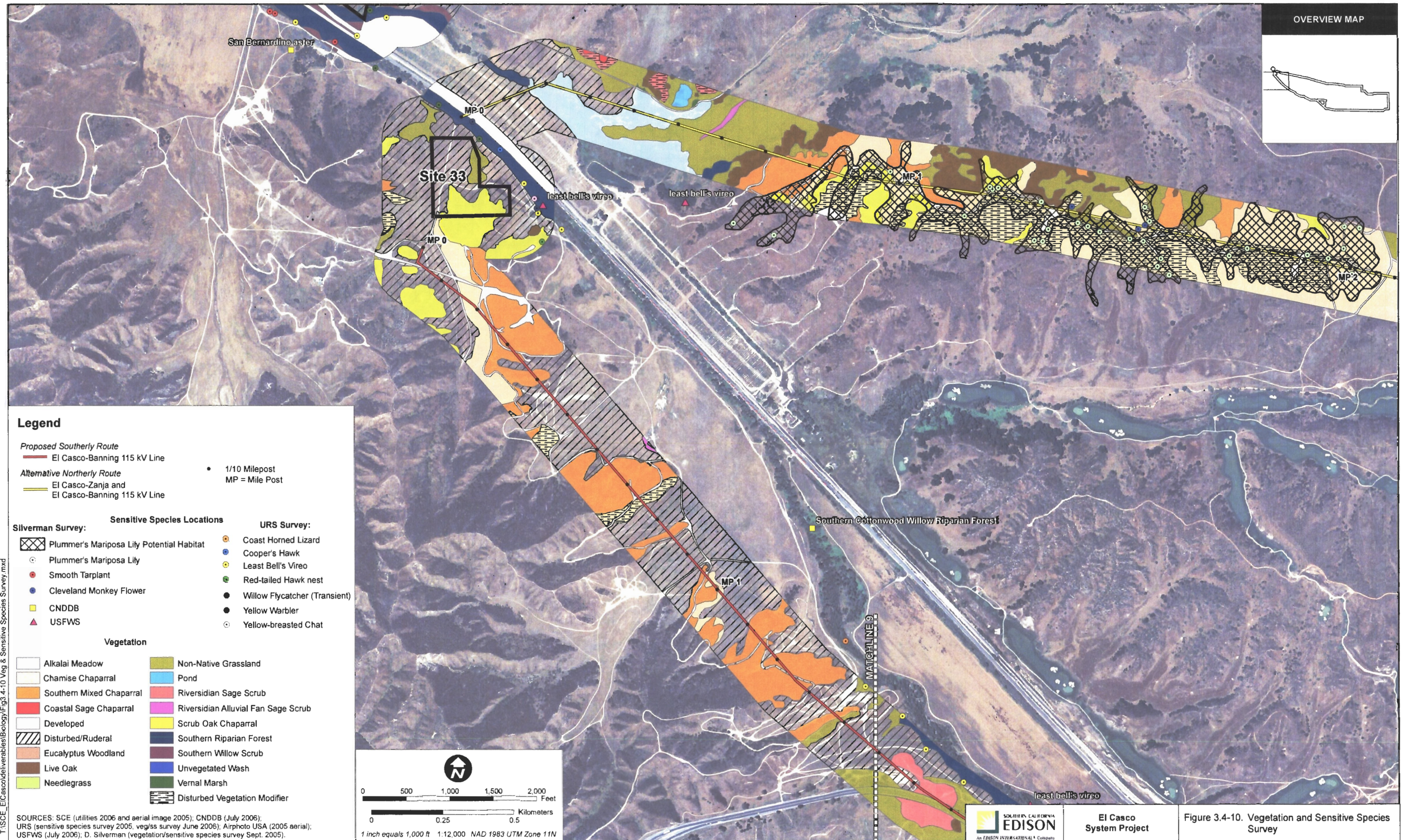
SOURCES: SCE (utilities 2006 and aerial image 2005); CNDDB (July 2006); URS (sensitive species survey 2005, veg/ss survey June 2006); Airphoto USA (2005 aerial); USFWS (July 2006); D. Silverman (vegetation/sensitive species survey Sept. 2005).



El Casco System Project

Figure 3.4-9. Vegetation and Sensitive Species Survey

Figure 3.4-10, Vegetation and Sensitive Species Survey



T:\SCE_ElCasco\deliverables\Biology\Fig3.4-10 Veg & Sensitive Species Survey.mxd