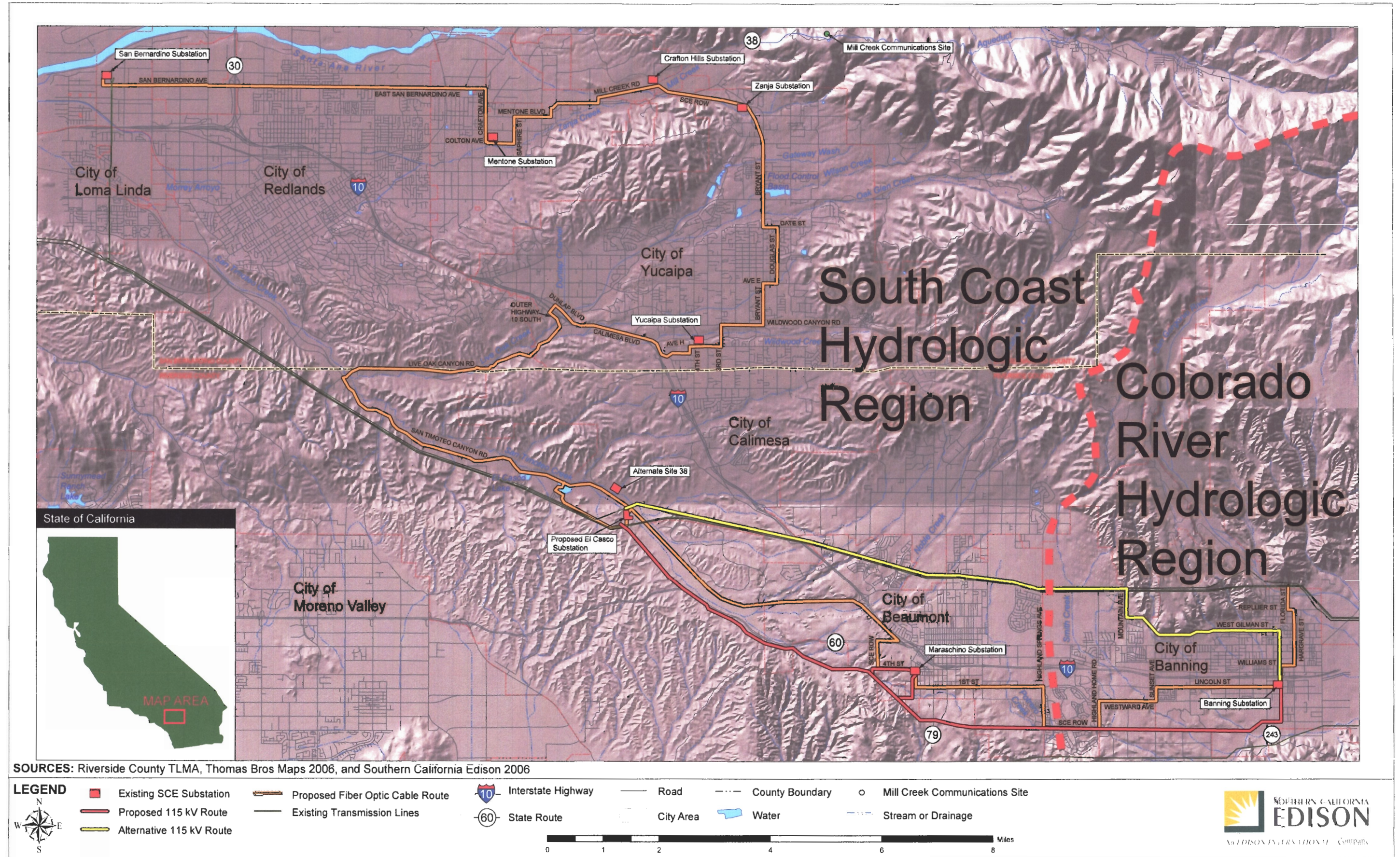


Figure 3.8-1, Hydrologic Regions in the Project Area



SOURCES: Riverside County TLMA, Thomas Bros Maps 2006, and Southern California Edison 2006

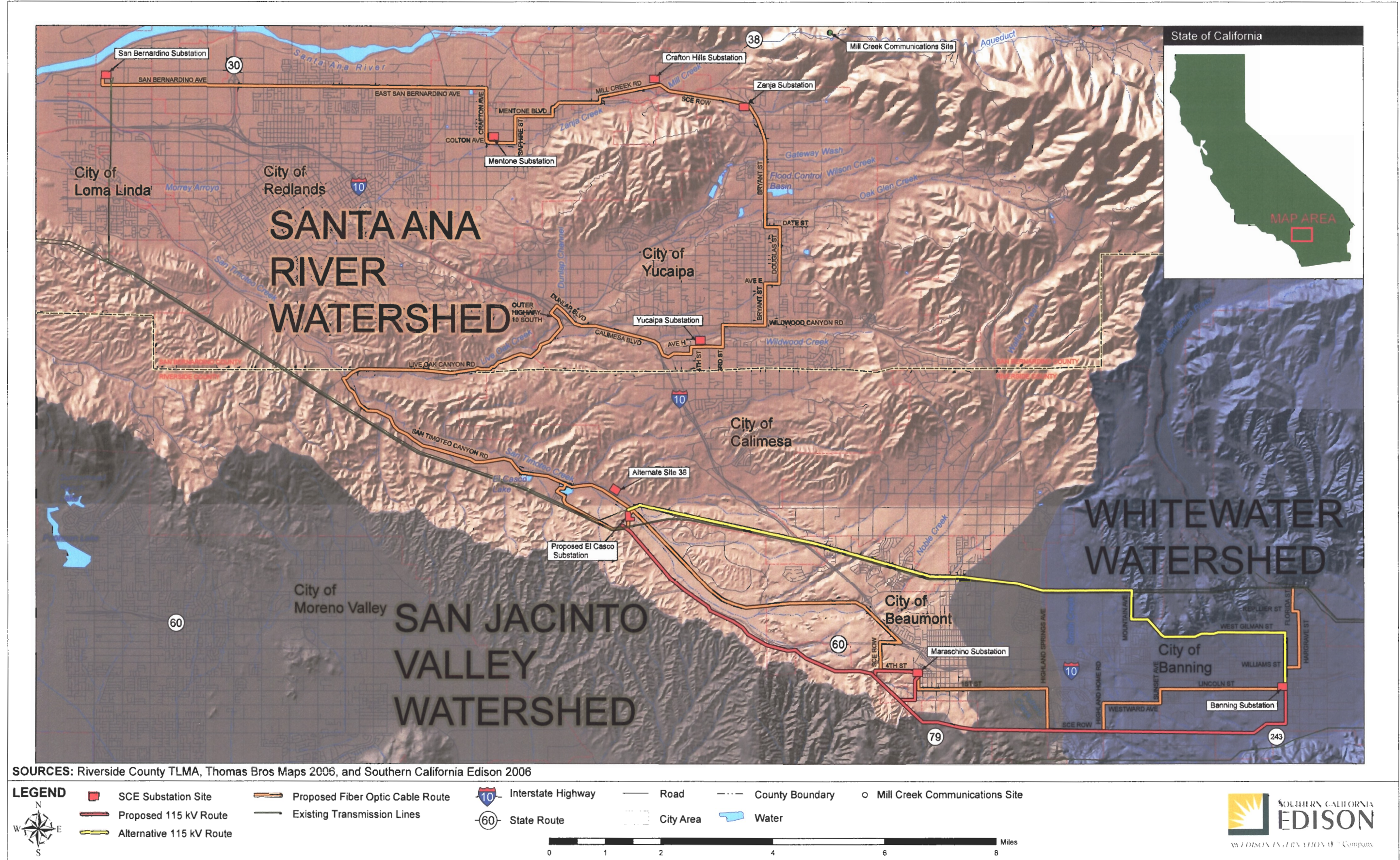
LEGEND

Existing SCE Substation	Proposed Fiber Optic Cable Route	Interstate Highway	Road	County Boundary	Mill Creek Communications Site
Proposed 115 kV Route	Existing Transmission Lines	State Route	City Area	Water	Stream or Drainage
Alternative 115 kV Route					

0 1 2 4 6 8 Miles



Figure 3.8-2, Watersheds in the Project Area



SOURCES: Riverside County TLMA, Thomas Bros Maps 2005, and Southern California Edison 2006

	SCE Substation Site	Proposed Fiber Optic Cable Route	Interstate Highway	Road	County Boundary	Mill Creek Communications Site
	Proposed 115 kV Route	Existing Transmission Lines	State Route	City Area	Water	
	Alternative 115 kV Route					

0 1 2 4 6 8 Miles

