

Figure 3.8-5, Flood Hazards in the Project Area

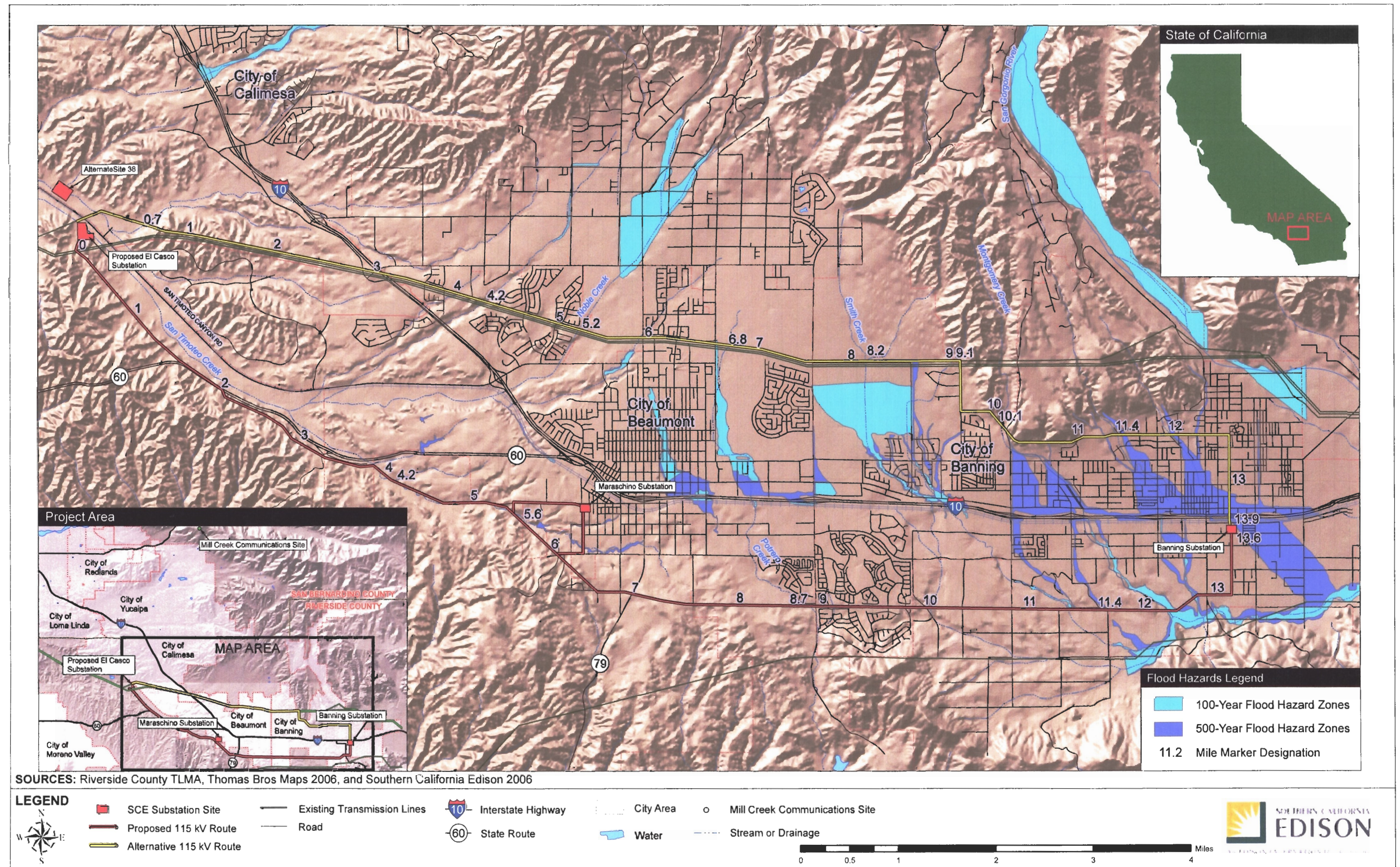
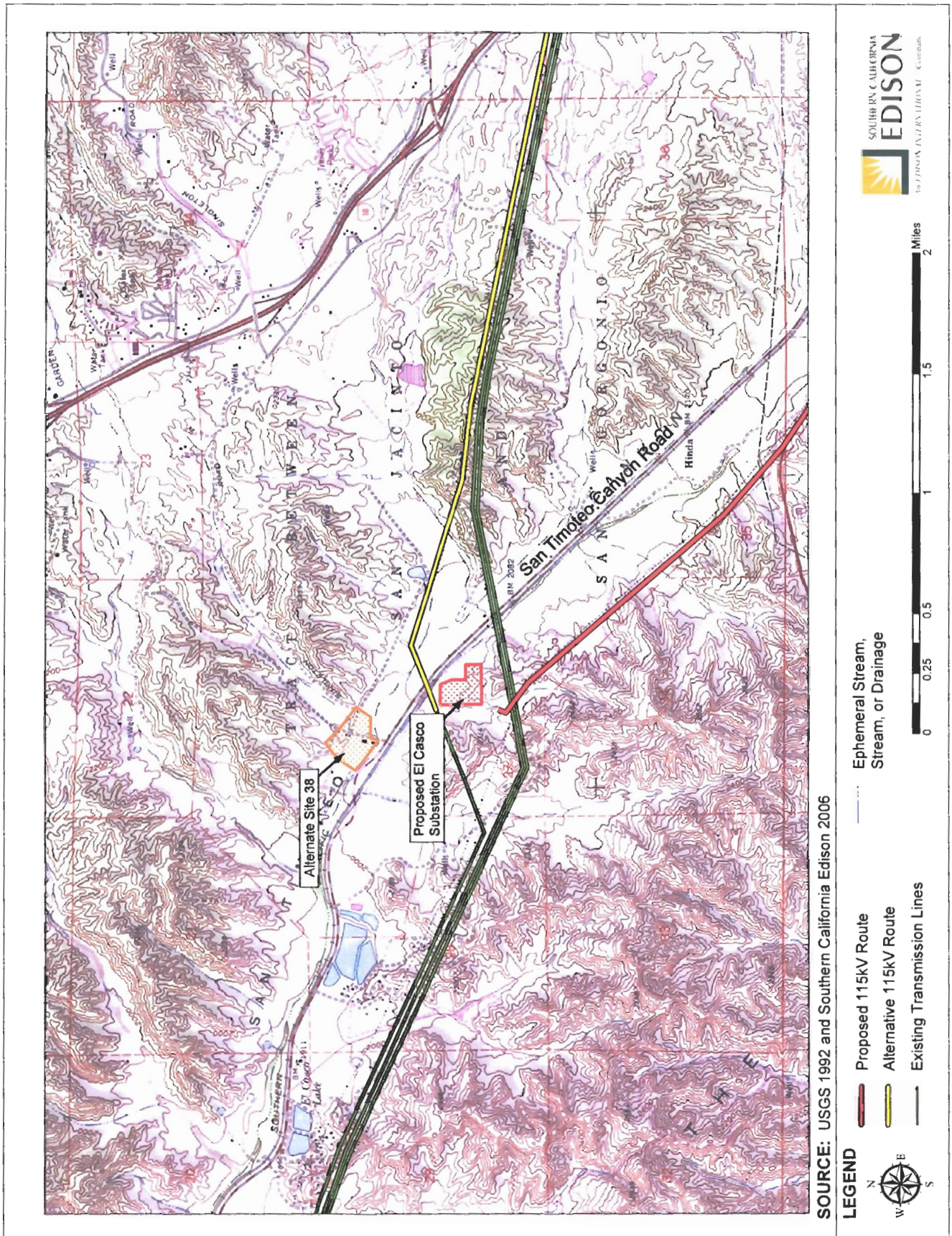


Figure 3.8-6, Proposed El Casco Substation and Alternate Site 38



**LEGEND**

- Proposed 115kV Route
- Alternative 115kV Route
- Existing Transmission Lines
- Ephemeral Stream, Stream, or Drainage



SOURCE: USGS 1992 and Southern California Edison 2006