

Figure 3.9-1, Riverside County General Plan and the City of Banning General Plan Legends

Legend



City Limits

Riverside County General Plan*

*This data was not used within the Banning City Limits.
This data was used within Beaumont and Calimesa City Limits.*

- | | | | |
|--|--|--|-----------------------|
| | Rural Residential | | Conservation Habitat |
| | Estate Residential-Rural Community | | Open Space Recreation |
| | Very Low Density Residential | | Open Space Rural |
| | Very Low Density Residential-Rural Community | | Water |
| | Low Density Residential | | Indian Lands |
| | Medium Density Residential | | Freeway |
| | Medium High Density Residential | | |
| | High Density Residential | | |
| | Commercial Retail | | |
| | Light Industrial | | |
| | High Industrial | | |
| | Business Park | | |
| | Public Facilities | | |
| | Mixed Use Policy Area | | |
| | Rural Mountainous | | |
| | Rural Desert | | |
| | Agriculture | | |
| | Conservation | | |

City of Banning General Plan

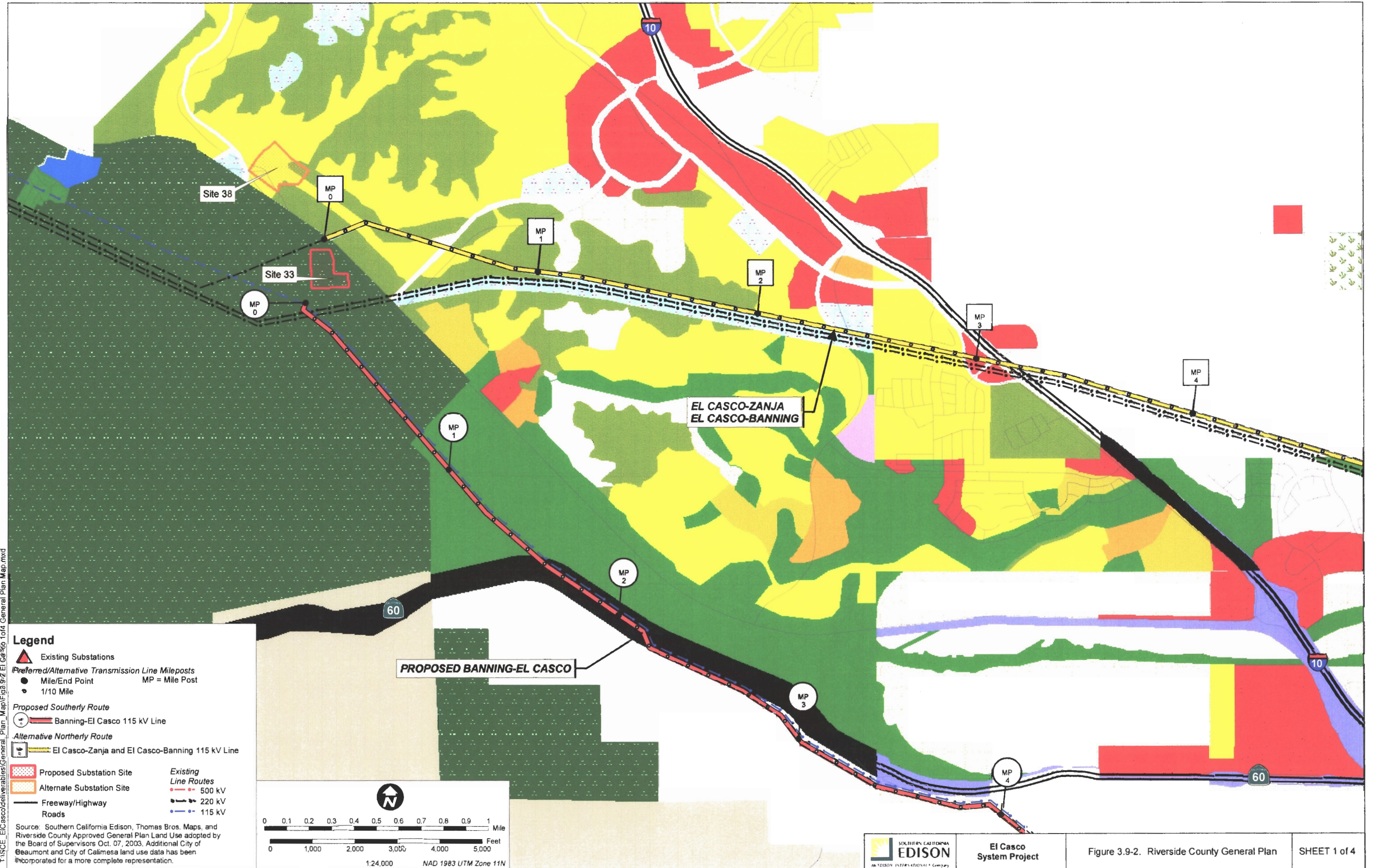
This data was used within the Banning City Limits

- | | |
|--|------------------------------|
| | Residential Agriculture |
| | Rural Residential |
| | Very Low Density Residential |
| | Low Density Residential |
| | Medium Density Residential |
| | High Density Residential |
| | Commercial |
| | Downtown Commercial |
| | Industrial |
| | Airport & Related Industry |
| | Public/Quasi-Public |
| | Mixed Use |
| | Conservation |
| | Water Conservation |
| | Specific Plan |

*The following Riverside County General Plan Land Use categories do not occur within the strip map view frames: Estate Residential, Low Density Residential-Rural Community, Highest Density Residential, Very High Density Residential, Commercial Tourist, Commercial Office, Community Center, Mineral Resources, Special Plan.

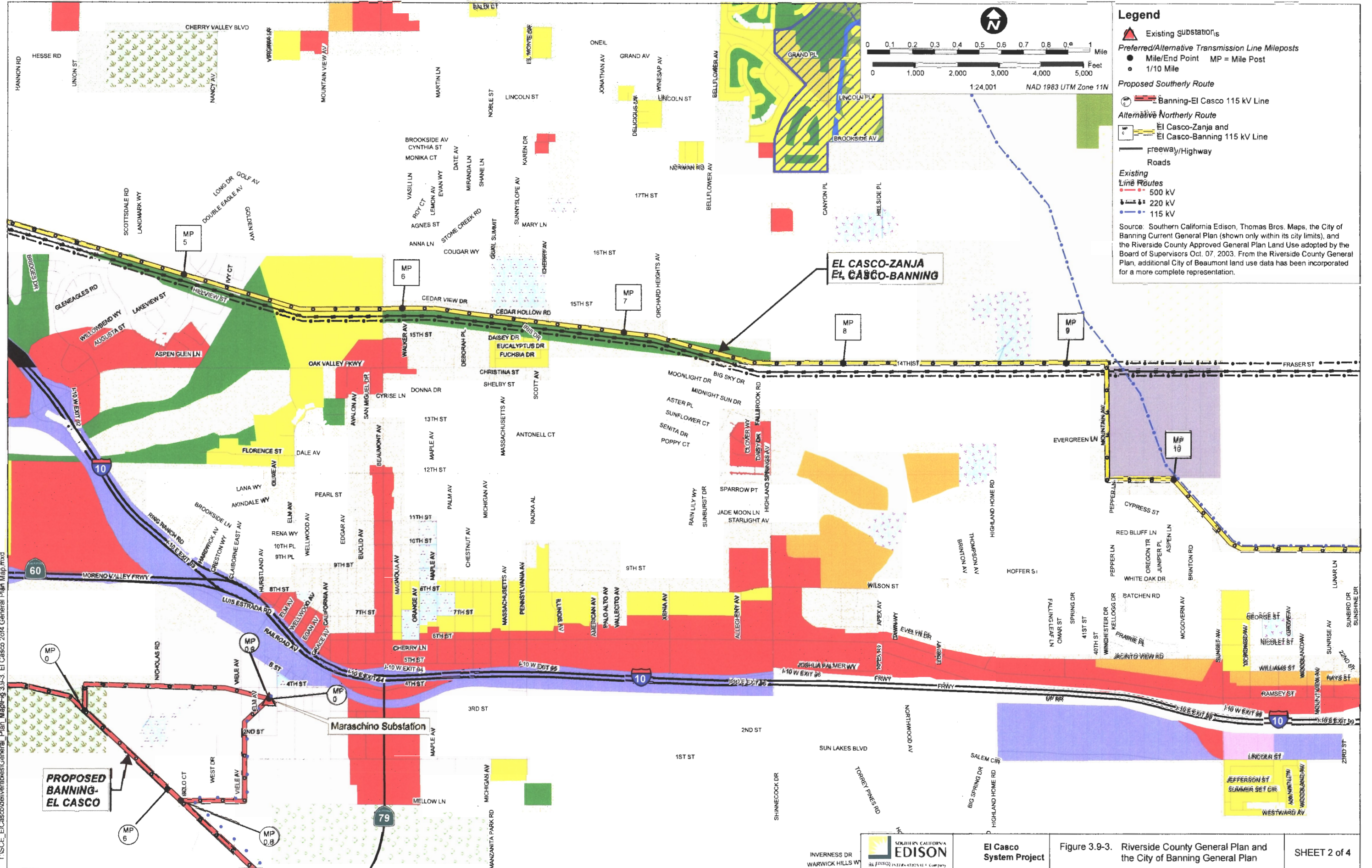
T:\SCE_ElCasco\deliverables\General_Plan_Map\Fig.3.9-1_El_Casco_Updated_General_Plan_Map_LEGEND.mxd

Figure 3.9-2, Riverside County General Plan



T:\SC_ElCasco\deliverables\General_Plan_Map\Fig3.9-2-El Casco 1016 General Plan Map.mxd

Figure 3.9-3, Riverside County General Plan and the City of Banning General Plan



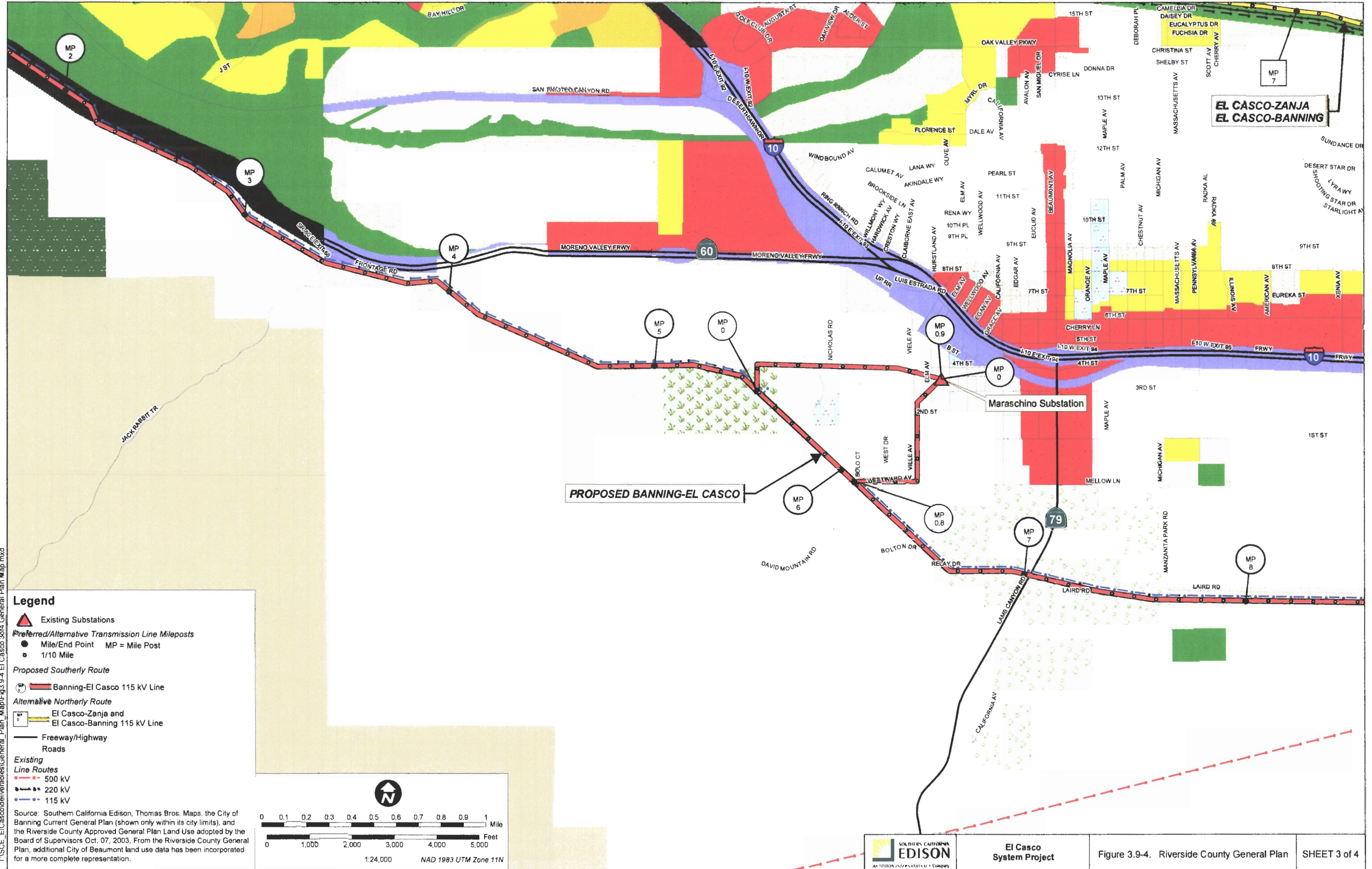
T:\SCE_ElCasco\deliverables\General_Plan_Map\Fig. 3.9-3 El Casco 2014 General Plan Map.mxd



El Casco System Project

Figure 3.9-3. Riverside County General Plan and the City of Banning General Plan

Figure 3.9-4, Riverside County General Plan



T:\SC_ElCasco\delivarables\General_Plan_Map\Fig3.9.4 El Casco 3016 General Plan Map.mxd

Legend

- ▲ Existing Substations
- Preferred/Alternative Transmission Line Mileposts
- Mile/End Point MP = Mile Post
- 1/10 Mile
- Proposed Southerly Route**
- ☞ Banning-El Casco 115 kV Line
- Alternative Northerly Route**
- ☞ El Casco-Zanja and El Casco-Banning 115 kV Line
- Freeway/Highway
- Roads
- Existing Line Routes**
- 500 kV
- 220 kV
- 115 kV

Source: Southern California Edison, Thomas Bros. Maps, the City of Banning Current General Plan (shown only within its city limits), and the Riverside County Approved General Plan Land Use adopted by the Board of Supervisors Oct. 07, 2003. From the Riverside County General Plan, additional City of Beaumont land use data has been incorporated for a more complete representation.

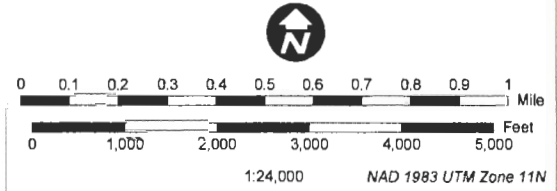
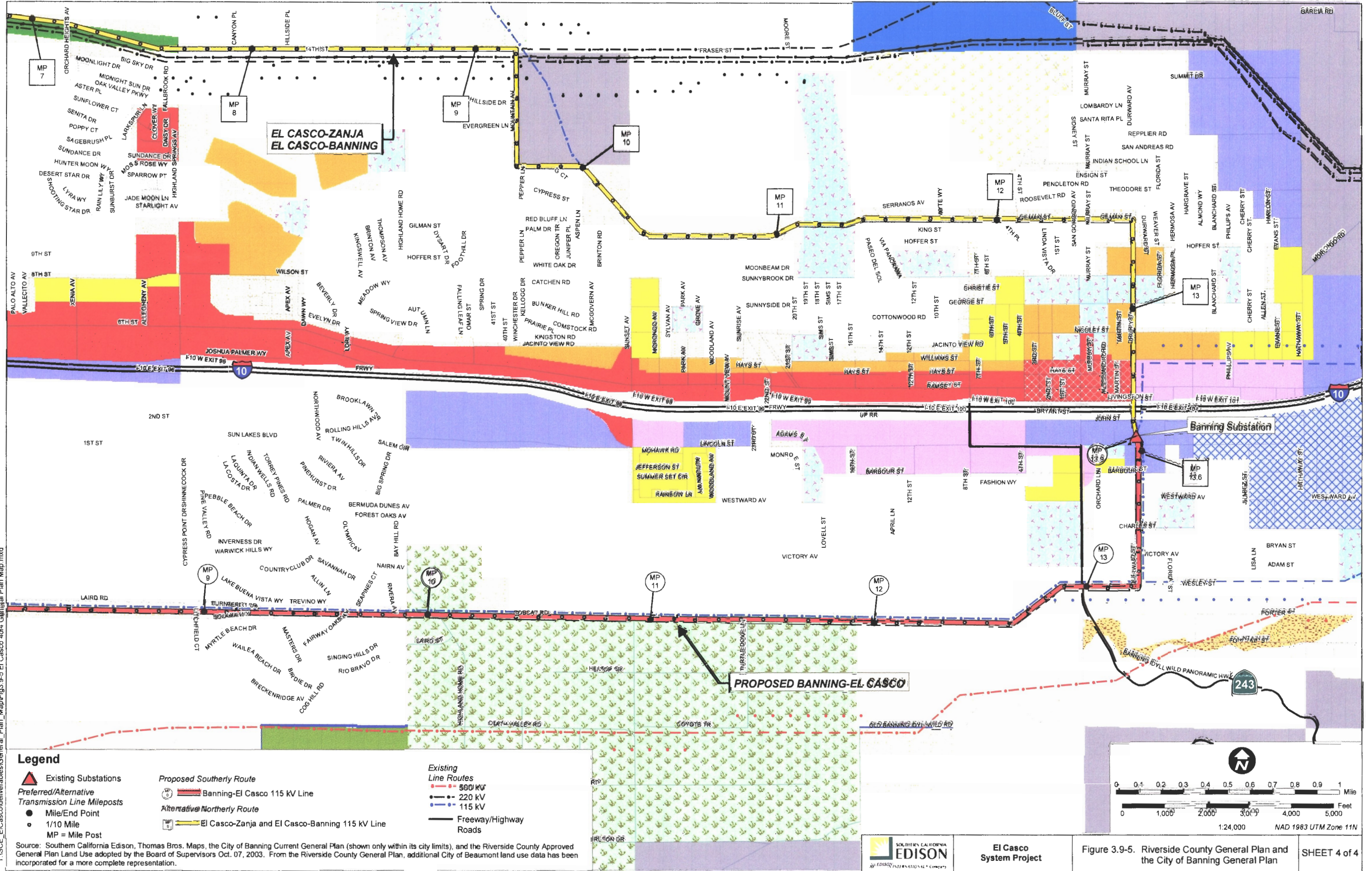


Figure 3.9-5, Riverside County General Plan and the City of Banning General Plan



T:\SCS\ElCasco\deliverables\General_Plan_Map\Fig3.9-5 El Casco 404 General Plan Map.mxd

Source: Southern California Edison, Thomas Bros. Maps, the City of Banning Current General Plan (shown only within its city limits), and the Riverside County Approved General Plan Land Use adopted by the Board of Supervisors Oct. 07, 2003. From the Riverside County General Plan, additional City of Beaumont land use data has been incorporated for a more complete representation.