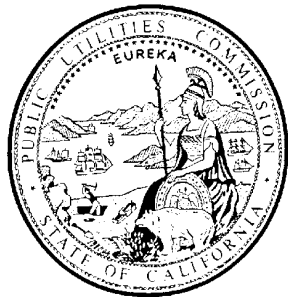


# **PG&E's Proposed Jefferson-Martin 230 kV Transmission Project**



## **CPUC Scoping Meeting for preparation of a Draft EIR**

**January 29, 2003**

**February 4, 2003**

**February 6, 2003**

# Meeting Participants & Agenda

- **Introduction of Speakers; Agenda Summary**  
*(Chris Keller, View Point West)*
- **Purpose of Scoping** *(Chris Keller)*
- **Description of Proposed Project** *(Susan Lee)*
- **CPUC Process and Schedule**  
*(Billie Blanchard, CPUC)*
- **EIR Process** *(Susan Lee)*
- **Comments from the Public and Agencies**
- **Where to send additional Scoping Comments**



## The Purpose of Scoping

---

- To inform the public and responsible agencies about an upcoming project for which an EIR will be prepared
- To inform the public about the environmental review process
- To solicit input regarding the potential alternatives to the proposed project and the appropriate scope of issues to be studied in the EIR
- To identify issues of concern and areas of potential controversy
- Scoping Report will be prepared and distributed to repositories, and placed on project website

## **Key Players and their Roles in the CEQA Process**

- **California Public Utilities Commission (CPUC): Lead Agency under California Environmental Quality Act (CEQA)**
- **Pacific Gas & Electric Company (PG&E): Applicant**
- **Aspen Environmental Group: Environmental contractor for CPUC**

# What is the Proposed Project?

The major elements of PG&E Co.'s Proposed Project include:

- Installation of a new 27-mile-long 230 kV transmission line with 14.7 miles overhead and 12.4 miles underground lines.
- Rebuilding the existing Jefferson-Martin 60 kV double-circuit tower line to enable the east side to operate at 60 kV and the west side at 230 kV.
- Construction of a new transition station near the intersection of San Bruno Avenue and Glenview Drive
- Modification of the existing Jefferson, Martin, San Mateo, Millbrae, Monta Vista, and Ralston substations and the Hillsdale Junction switching station.

## Where is the Proposed Project?

### The Project would be located almost entirely in San Mateo County:

- The overhead route passes through or adjacent to Cities/Towns of Hillsborough, Burlingame, Millbrae, and San Bruno, and unincorporated San Mateo County (Edgewood Park and The Highlands)
- The underground segment passes through Cities/Towns of San Bruno, South San Francisco, Colma, Daly City, and Brisbane, and San Bruno Mountain State & County Park.
- A minor upgrade to the Monta Vista Substation (Cupertino) is required.



## **Need for the Proposed Jefferson-Martin Project**

---

**According to PG&E, the proposed project is needed to:**

- Meet electric demand in San Francisco and northern San Mateo County
- Comply with electric reliability planning criteria
- Create a more diverse electric transmission system on the SF Peninsula
- Implement the Independent System Operator's Resolution approving the project.

## **CPUC Review Process**

---

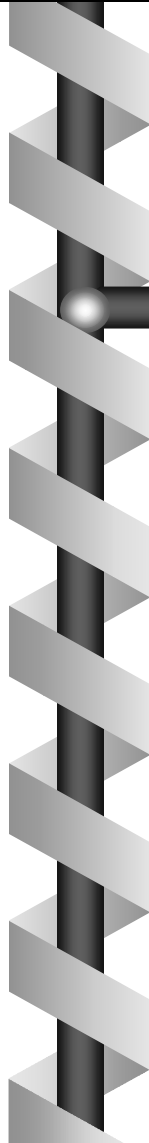
**The CPUC has two parallel review processes for this PG&E Application for a Certificate of Public Convenience & Necessity (CPCN):**

- **General Proceeding  
(Application # A.02-09-043)**
- **Environmental Review  
(the CEQA process)**



# CPUC Tentative Review Schedule

General Proceeding	Environmental Review
Application filed by PG&E: September 30, 2002	PG&E's Proponent's Environmental Assessment: <i>Filed September 30, 2002</i>
First Pre-Hearing Conference: <i>January 10, 2003</i>	Notice of Preparation for EIR: <i>Mailed January 21, 2003</i>
Scoping Memo for General Proceeding: <i>expected Feb. 2003</i>	Public Scoping for EIR: <b><i>Extended to February 27, 2003</i></b>
Testimony Exchanged: <i>October-November 2003</i>	Draft EIR: <i>July-August 2003</i> • 45 Day Comment Period • Public Consultation
Evidentiary Hearings: <i>December 2003</i>	Final EIR: <i>October 2003</i>
ALJ's Proposed Decision: <i>early to mid-2004</i>	EIR Certified by CPUC: <i>late 2003 or early 2004</i>



## **General Proceeding for Certificate of Public Convenience and Necessity (CPCN)**

---

### **Led by:**

- Assigned Commissioner Loretta M. Lynch and Administrative Law Judge Charlotte TerKeurst

### **Scope** (defined by Public Utilities Code Section 1002):

- Determine need for the project (facilities are necessary to promote the safety, health, comfort, and convenience of the public)
- Consider community values, recreational and park areas, historic and aesthetic values.
- Review environmental impacts as required by the California Environmental Quality Act (CEQA)



## **Environmental Review**

---

**CPUC is the “Lead Agency” under CEQA for conducting the environmental review and preparing the EIR.**

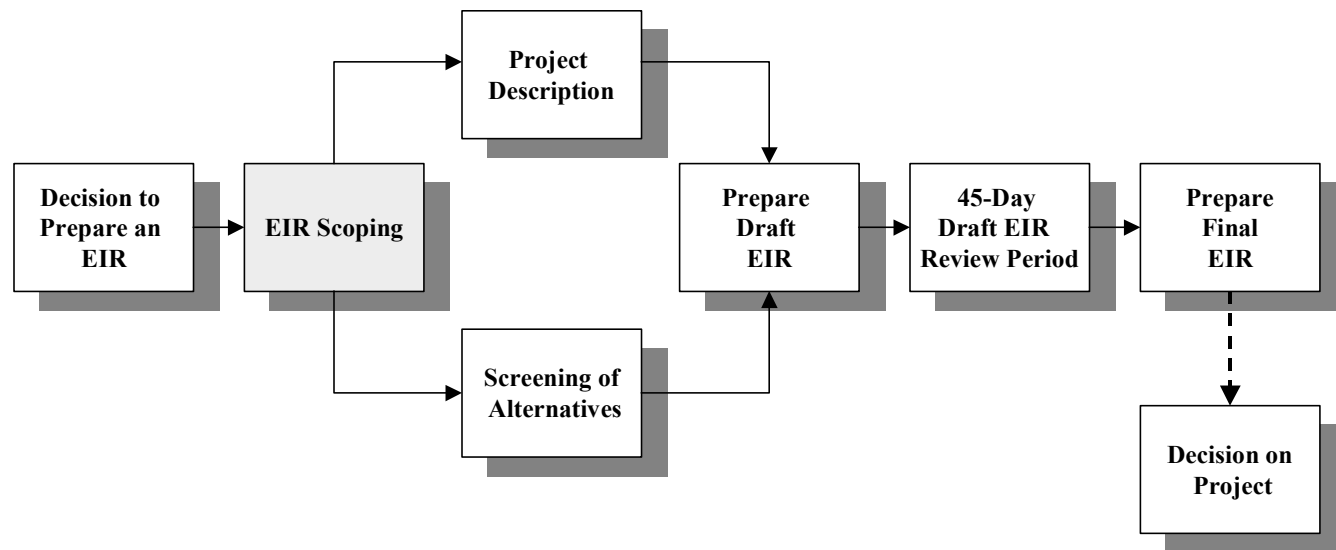
### **Objectives:**

- Assess potential impacts of the proposed project and the alternatives
- Identify ways to avoid or reduce impacts, including examination of alternatives and mitigation measures that could reduce or avoid impacts

## The Purpose of an EIR

- Describe the environmental setting of the project area
- Disclose the potential environmental impacts of the project and alternatives
- Propose measures to reduce or avoid significant environmental impacts (mitigation measures)
- Provide technically sound information for decision-makers to consider in evaluating the proposed project

# The EIR Process





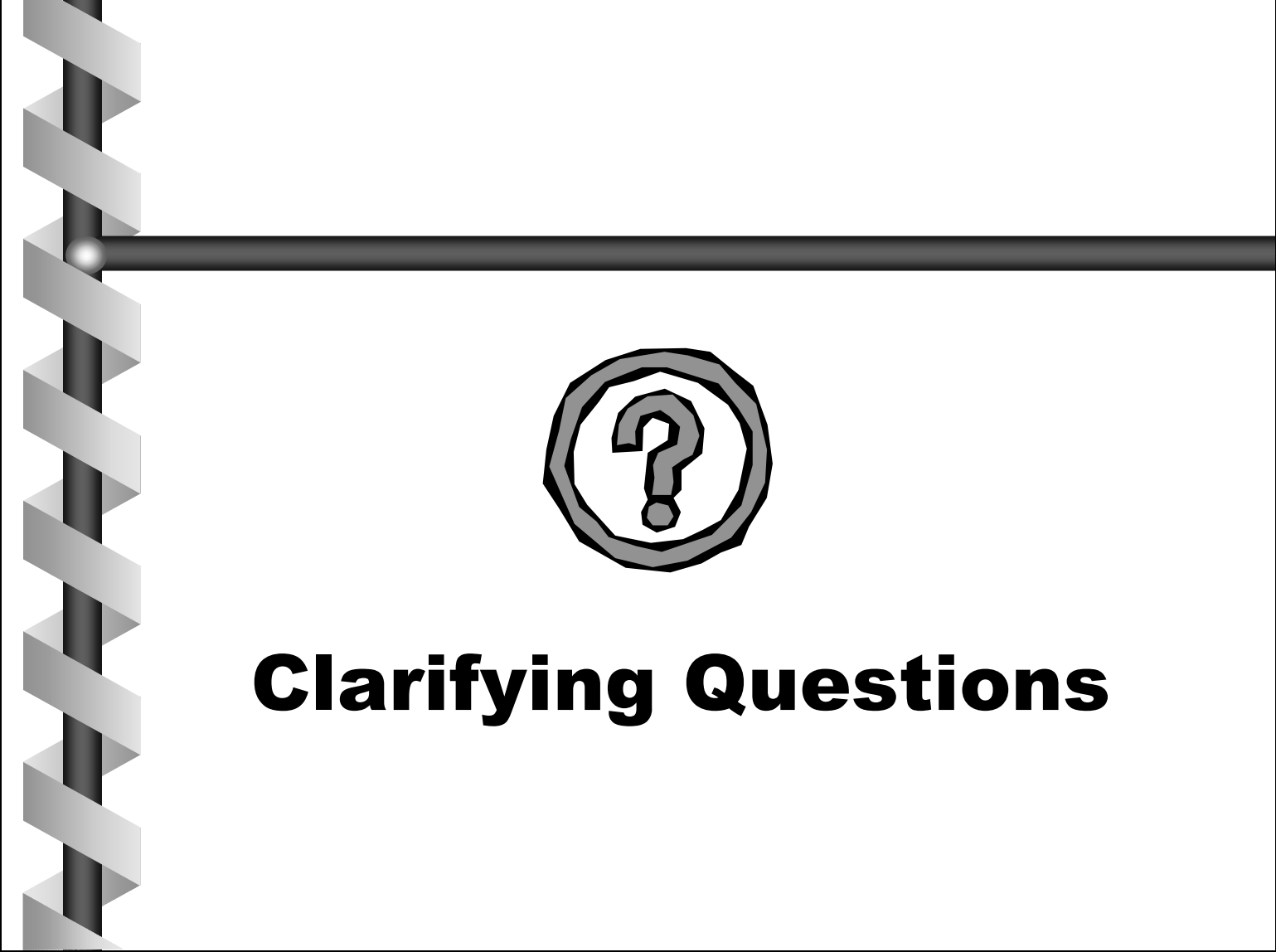
## Examples of Environmental Issue Areas

---

- Aesthetics
- Air Quality
- Biological Resources
- Cultural Resources
- Geology & Soils
- Hazards
- Hydrology & Water Quality
- Land Use
- Noise
- Public Services
- Recreation
- Transportation & Traffic
- Utilities

## **After EIR Completion**

- **Commission vote on Proposed Decision may occur in early to mid-2004**
- **EIR is referenced in the Decision**
- **If the project or an alternative is approved, the Decision will require monitoring of adopted mitigation measures and definition of mitigation monitoring procedures.**

A graphic of a spiral-bound notebook with a question mark icon in the center. The notebook is shown from a three-quarter perspective, with a grey spiral binding on the left side. A thick black horizontal line runs across the top of the notebook's page. In the center of the page, there is a large, stylized question mark icon enclosed within a circular border. The text 'Clarifying Questions' is written in a bold, black, sans-serif font below the icon.

**Clarifying Questions**





---

# **EIR Scoping Comments**



## **Written Scoping Comments Must be Received or Postmarked by February 27, 2003**

**Please send comments to:**

**Billie Blanchard**  
California Public Utilities Commission  
c/o Aspen Environmental Group  
235 Montgomery St., Suite 800  
San Francisco, CA 94104

*or*

**E-mail: [jeffmartin@aspeneq.com](mailto:jeffmartin@aspeneq.com)**

*or*

**Fax: (650) 240-1720**

**\*\* Please be sure to include your name,  
address, and phone number on all comments.**

## For More Information:

- Check our Internet website:  
[www.cpuc.ca.gov/Environment/info/aspen/jefferson\\_martin/jeffmartin.htm](http://www.cpuc.ca.gov/Environment/info/aspen/jefferson_martin/jeffmartin.htm)
- Information Repositories: 13 area libraries have project information
- E-mail us at: [jeffmartin@aspeneq.com](mailto:jeffmartin@aspeneq.com)
- Call the Project Information Line:  
(650) 240-1720 (voice or fax)

