



Aspen Environmental Group

PROJECT MEMORANDUM PG&E JEFFERSON-MARTIN 230KV TRANSMISSION PROJECT

To: Billie Blanchard, CPUC
From: Vida Strong, Aspen Project Manager
Date: May 4, 2005
Subject: Weekly Report #15: April 24, 2005 – April 30, 2005
CPUC Environmental Monitors (EM): Jody Fessler and Jenny Slaughter

CPUC EM Jody Fessler was on site April 25th through April 29th along Segments 1, 2, and 5.

CPUC EM Jenny Slaughter was on site April 25th through April 28th along Segments 1, 2, and 5.

SEGMENT 1:

Summary of Activity:

Construction activities continued during the subject week with the excavation of trenches, installation of conduit, repair of sunken trenching areas, excavation of vault pit, and installation of manhole vaults. The weather was partly sunny and warm until Wednesday morning when it started to rain on and off through Thursday. The weather was sunny and warm on Friday with some high clouds. PG&E Environmental Inspectors (EI) were on-site to ensure compliance with mitigation measures adopted in the EIR, Storm Water Pollution Prevention Plan (SWPPP), and other permit requirements. At least five PG&E EIs were on-site during daytime activities to inspect environmental compliance at the work sites and six to ten biological monitors were located on the west side of Cañada Road (and east side in some areas) to watch for frogs and snakes and to make sure these species did not enter the work site. The following activities occurred on Segment 1 during the subject week:

1. On April 25th, crews started excavating trench between Manhole #13 and Manhole #14 on Cañada Road (Figure 1). A pilot vehicle was used in this area with a biological monitor riding along to look for snakes in the road. The soil from the trenching activities was transported to Ox Mountain landfill in Half Moon Bay (Class 3 facility). Crews shored the trench as they excavated. Conduit was installed in the trench as the excavation progressed, and cement slurry was poured around the conduit as it was installed. Approximately 2,830 linear feet of conduit was installed throughout the week. Biological monitors were placed on the west side of the biological exclusion fencing (BEF) along Cañada Road. A few biological monitors were also placed on the east side of the road in high probability areas for the San Francisco garter snake. There were at least three EIs in the construction zone at all times. A small crew was on-site during the night, but little work was done in that area. An EI also stayed at the site at night to observe construction, watch for animals, and check under vehicles and equipment in case a crew member needed to move their vehicle. Crews conducted asphalt paving of the trench on Wednesday, Thursday, and Friday. Clean-up activities were done on Thursday and Friday. All materials and traffic controls were removed from the construction area at the end of the day Friday.
2. On Monday, April 25th, crews began excavating Manhole #14 stub-outs on either side of the manhole on Cañada Road. Both stub-outs had conduit installed throughout the week and were completed by the end of the week.
3. Night trenching work continued in the Caltrans area on Skyline this week starting in the early morning of April 25th (Figure 2). Skyline/Highway 35 was closed to public traffic from the Crystal Springs Dam to the Highway 35/Highway 92 Interchange from 8:00 p.m. to 5:00 a.m., Monday through

Friday. Crews continued to excavate south from where they left off with last week's trenching activities just north of Manhole #20. The trench was excavated, conduit installed and cement slurry poured over the conduit. Trench plates were placed over the trenches after the end of each night shift. Crews encountered a lot of water in the trench this week from the rain on Wednesday and Thursday. Cleaning out of the trenches and around the installed conduit had to be done before cement slurry could be poured over the conduit. The trench walls caved in at several locations because of the soil saturation. On Thursday night, crews installed BEF from Manhole #20 to 600 feet south in preparation for next week's work. Two PG&E EIs were on site to ensure environmental compliance.

4. The night shift also worked at Manhole #19 in the Caltrans area this week starting in the early morning of April 25th. K-rails were placed around the manhole work area and traffic was routed around the area during the day. Crews excavated the manhole pit early Monday morning and shored the pit. A large crane arrived Monday night and the manhole vault was set in the pit. Cement slurry was poured Monday and Tuesday nights, and final paving was done Wednesday night. Traffic controls were gone from the area on Thursday.
5. Traffic controls (signs, cones, and lights) were set up on Cañada Road at the various construction sites. Traffic control flaggers were in place at either end and in the middle of the construction areas along Cañada Road. A pilot vehicle was being used where there were stretches of traffic controls longer than 300 feet to slow traffic down as well as look out for San Francisco garter snakes. A biologist rode along in the pilot vehicle to look for snakes and frogs that may have gotten in the road. Traffic lights were set up at either end of traffic controls at night. Bright lights were set up at either end of traffic controls and in the construction zone at night.
6. Crews continue to use their staging yards at 40 Edwards Court in Burlingame and the southern Caltrans site along the Caltrans right-of-way on Highway 35.
7. New BEF was installed on the west side of Cañada Road and Skyline Boulevard as directed by Dave Johnston of CDFG.
8. On April 26th, 27th, 28th, and 29th, one San Francisco garter snake (SFGS) was sighted each day along Segment 1.
9. On Friday, April 29th, crews conducted clean-up activities along Cañada Road in preparation for the weekend.

Environmental Compliance Activities:

Bird surveys continued throughout the week along the segment from the Jefferson Substation north along Cañada Road and Skyline Boulevard to Hayne Road.

Five non-compliances were issued by PG&E's EIs during the subject week:

- During the evening of April 25th, construction personnel refueled a piece of equipment within 50 feet of a drain inlet without secondary containment and without notifying the PG&E EI.
- During the evening of April 27th, erosion controls were not installed in the Caltrans work area prior to a forecasted rain event.
- On April 28th, during a heavy rain event, a shallow trench filled with storm water and overflowed where the paving ended the previous day. Note: The storm water didn't flow into any water bodies.
- Also on April 28th, the pilot vehicle ran out of gas. While the pilot vehicle was out of service, traffic control allowed traffic to pass through the construction zone several times in both directions without an escort.
- On April 29th, PG&E's EI failed to make the proper notifications about a potential SFGS sighting.

On April 27th, the CPUC EM noticed that there were two large excavators parked just outside the southeastern corner of the southern Caltrans Staging Yard (InfraSource yard). The CPUC spoke with PG&E's EI and he said he would speak with construction management about the issue. On April 29th, the CPUC EM observed that there was still one large excavator parked on the outside of the staging yard. The CPUC EM spoke with PG&E's EI again and he said he would talk to construction management about the issue again. The CPUC EM informed the PG&E EI that if the excavator was still there next week, a Project Memorandum or Non-compliance Report would be issued.

The CPUC EM observed that all other Segment 1 construction activities were in compliance with mitigation measures adopted in the EIR and other permit requirements. Erosion controls were in place around the construction areas.

SEGMENT 2, UNDERGROUND & OVERHEAD

Summary of Activity

A Notice to Proceed (NTP) was issued for the Segment 2 underground portion, not including SFPUC lands, on March 8th. However, no NTP has been issued for the overhead component of Segment 2.

The CPUC EMs conducted site visits of the underground segment throughout the week. Crews were working at Manhole #36 and Manhole #35 and Manhole #34 throughout most of the week. No work took place on Segment 2 on Thursday. A PG&E EI was on-site during construction to ensure compliance with the mitigation measures adopted in the EIR, Storm Water Pollution Prevention Plan (SWPPP), and other permit requirements. The following activities occurred on Segment 2 during the subject week:

1. On Monday, April 25th, construction continued at Manhole #36 on Skyline Boulevard. Concrete slurry was poured around and over the vault on Monday and Tuesday. The manhole vault was then plated over at the end of each day. More work still has to be done at this location.
2. On Monday, April 25, crews conducted pot-holing activities along Skyline Boulevard.
3. On Wednesday, April 27th, crews started excavating and shoring Manhole #34 (Figure 3). This work continued through Friday.
4. On Friday, April 29th, crews saw-cut the trenching area between Manhole #37 and Manhole #36 on Trousdale Drive in preparation for next week's work. Crews then used a sweeping machine to clean up the spoils created by the asphalt-cutting machine.
5. Traffic controls (signs, cones, and flaggers) were set up on Trousdale Drive and Skyline Boulevard at the three manhole locations and the saw-cutting area during active construction.
6. Crews continue to use the Northern Caltrans Staging Yard at the corner of Skyline Boulevard and Hayne Road. The CPUC EM observed that the site was neat and clean.
7. Clean-up activities were conducted at the end of each day at the active construction sites.

Environmental Compliance Activities:

Bird surveys continued throughout the week from Hayne Road north along Skyline Boulevard to Trousdale Drive for the underground segment, and from Trousdale Drive north along San Andreas Lake west and parallel to Highway 280, and Skyline Boulevard to Glenview Drive for the overhead segment.

On Friday, April 29th, the CPUC EM observed that the areas around Manhole #34 and Manhole #35 were dirty. The CPUC EM spoke with PG&E's EI who said he would make sure the areas were cleaned up by the end of the day. While at Manhole #35, the CPUC EM noticed an elderly gentleman from the public walking in the Controlled Access Zone (CAZ) while heavy equipment was operating around the manhole. The CPUC EM asked the man to step out of the construction zone and then escorted him to the other side

of the road outside of the CAZ area. No construction personnel stopped the man from entering the CAZ area. The CPUC reported the incident to the Construction Segment Manager and B&V's Safety Manager. The CPUC EM observed that all other Segment 2 construction activities were in compliance with mitigation measures adopted in the EIR and other permit requirements.

One non-compliance was issued by PG&E's EIs during the subject week. On April 29th, a non-compliance was issued for insufficient clean-up of saw cutting and excavation activities.

PG&E continues to work with CDFG regarding woodrat removal activities that previously occurred along the overhead portion of Segment 2 without CDFG concurrence. PG&E is also consulting with USFWS and CDFG regarding biological resources along the entire overhead segment. PG&E has scheduled a site visit with the resource agencies for May 18th. In addition, a meeting has been scheduled for May 5th with applicable parties to review the proposed tree removal along Segment 2 overhead.

SEGMENT 4:

Summary of Activity:

Construction is scheduled to start May 2nd, 2005 at Manhole #48 along the southern portion of the segment.

SEGMENT 5:

Summary of Activity:

Construction activities continued during the subject week with the excavation of trench, installation of conduit, and bridge attachment activities. There was a PG&E EI on-site to ensure compliance with mitigation measures adopted in the EIR, Storm Water Pollution Prevention Plan (SWPPP), and other permit requirements. The following activities occurred on Segment 5 during the subject week:

1. On Monday, April 25th, excavation of trench began east of Manhole #72 on Guadalupe Canyon Parkway (Figure 4). Throughout the week, the trenches were shored, conduit installed, cement slurry poured, and the area paved over on Friday. Approximately 1,500 linear feet of conduit was installed during the week.
2. During the week, crews worked on stub outs at Manholes #70 and #72.
3. On Tuesday, April 26th, crews were observed conducting pot-holing activities along Bayshore Boulevard near Guadalupe Canyon Parkway on the east side of San Bruno Mountain.
4. On Tuesday, April 26th, the CPUC approved a Temporary Extra Work Space (TEWS) for the installation of conduit on a bridge at the top of San Bruno Mountain on Guadalupe Canyon Parkway. The TEWS would allow crews to access an area on the bridge needed for conduit installation.
5. Traffic controls (signs, cones, and lights) were set up on Guadalupe Canyon Parkway from Manhole #70 to Manhole #73. Traffic control flaggers were in place at the active construction areas. Traffic cones were left in place blocking off the southern lane. Bright lights were set up on either end of the project at night. A small night crew stayed on-site at night and did some light work.
6. Construction crews continue to use their staging yard at the corner of North Access Road and South Airport Boulevard for the storage of equipment, materials and two trailers they are using for office space. Three Baker tanks are on site at that location.
7. On Friday, April 29th, crews conducted clean-up activities along Guadalupe Canyon Parkway in preparation for the weekend.

Environmental Compliance Activities:

Bird surveys continued throughout the week along the segment from approximately Orange Court east along Guadalupe Parkway and Bayshore Boulevard to the Martin Substation.

Biological monitors spot-checked nests for disturbance along the active construction zones.

No non-compliances were issued by PG&E’s EIs during the subject week.

The CPUC EM observed that Segment 5 construction activities were in compliance with mitigation measures adopted in the EIR and other permit requirements. Erosion controls were in place around the construction areas.

NOTICES TO PROCEED (NTP):

Table 1 presents the NTPs issued by the CPUC for the Jefferson-Martin Project to date.

TABLE 1
NOTICES TO PROCEED
(Updated 5-04-05)

NTP #	Date Issued	Description
#1	1-10-05	Segment 1, underground only Segment 5, unincorporated San Mateo County only
#2	3-08-05	Segment 2, underground only, not including SFPUC lands
#3	3-11-05	Segment 5, incorporated
#4	3-11-05	Segment 3
#5	3-30-05	Segment 4

ENVIRONMENTAL COMPLIANCE:

One Non-Compliance Report (NCR) and three Project Memorandums (PMs) have been issued for the project to date (see Table 2).

TABLE 2
ENVIRONMENTAL COMPLIANCE STATUS
(Updated 5-04-05)

Project Memo or NCR	Date Issued	Description	Follow-up Activities
NCR (Level 3)	2-01-05	Segment 2 – Dismantling and removal of woodrat nests along the overhead route without consulting with CDFG.	PG&E consulting with CDFG on how to proceed.
PM	2-09-05	Segment 1 - Breach of trenching activities into vegetated drainage on east side of Cañada Road between MH #7 and MH #8.	PG&E consulting with CDFG and USFWS on how to proceed.
PM	2-16-05	Segment 5 – Dewatering of Manhole #67 vault pit without consulting with RWQCB on handling of water	PG&E consulting with RWQCB on how to proceed with storm water and groundwater.
PM	3-04-05	Segment 1 – Hummingbird nest found near Manhole #5 on Monday, Feb. 28 th , and not reported to CPUC or CDFG until Thursday, March 3 rd .	PG&E discussing better communication between PG&E and sub-contractors.

VARIANCE REQUESTS:

There was one Variance Request submitted during the subject week for the use of a staging yard in the City of San Bruno under Highway 380. This request was approved by CPUC on May 3, 2005.

TABLE 3
VARIANCE REQUEST STATUS
(Updated 5-04-05)

Variance Request #	Date Submitted	Description	Status	CPUC Approval Date
1	1-14-05	40 Edwards Court, Burlingame – Paved parking lot that is fenced to be used as a staging yard.	Approved	1-18-05
2	2-04-05	Staging yard, Airport Boulevard & North Access Road., South San Francisco.	Approved	2-09-05
3	2-22-05	Change compliance timing for Mitigation Measure U-1c, corrosion, from pre-construction to during construction.	Approved	3-04-05
4	4-28-05	Staging yard, Herman Street and Forest Lane, City of San Bruno	Approved	5-03-05

UPCOMING ITEMS:

PG&E holds the following weekly meetings to review issues and upcoming events:

- Segment 1 on Friday (12:00 p.m., San Mateo BV office) and Tuesday (8:00 a.m., Hayward BV office);
- Segment 2 on Friday (10 a.m., San Bruno BV office) and Tuesday (10:00 a.m., Hayward BV office);
- Segment 4 on Tuesday (11:00 a.m., Hayward BV office); and
- Segment 5 on Monday (3:00 p.m., South SF Mueller/InfraSource Staging Yard) and Tuesdays (9:00 a.m., Hayward BV office).

Agency Personnel Contacts: None.

Photographs



Figure 1 – Crews excavating trench north of Manhole #14 on Cañada Road, Segment 1, April 27, 2005.

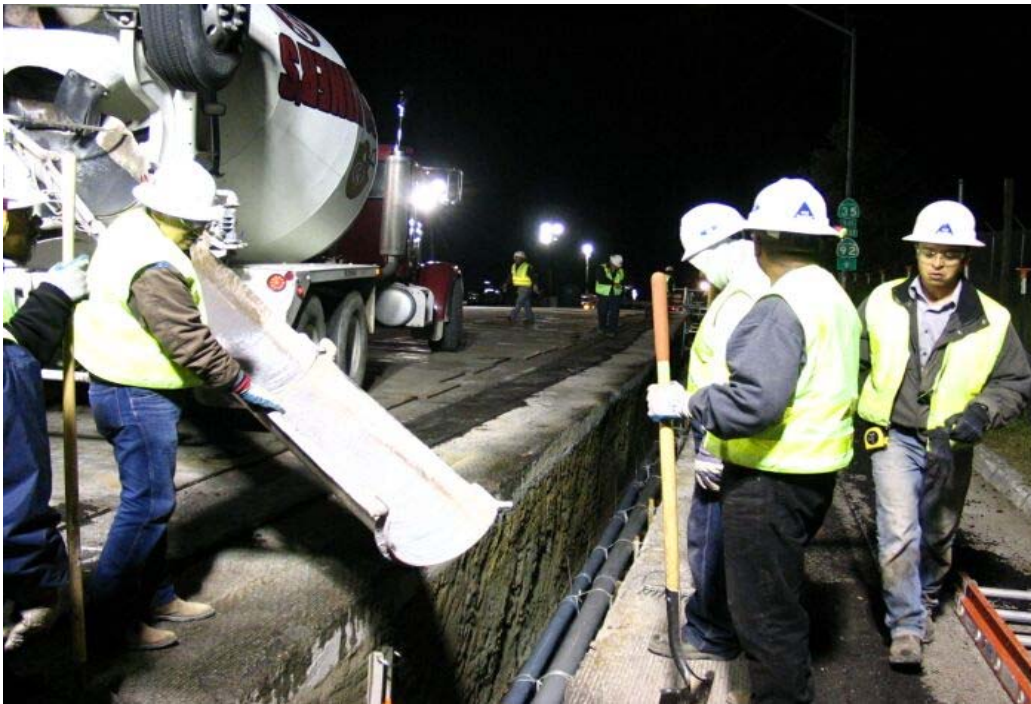


Figure 2 – Crews pouring cement slurry in trench north of Manhole #20 in the Caltrans area on Skyline Boulevard, Segment 1, April 25, 2005.



Figure 3 – Crews excavating Manhole #34 on Skyline Boulevard, Segment 2, April 29, 2005.



Figure 4 – Crews pouring cement slurry east of Manhole #72 on Guadalupe Canyon Parkway, Segment 5, April 28, 2005