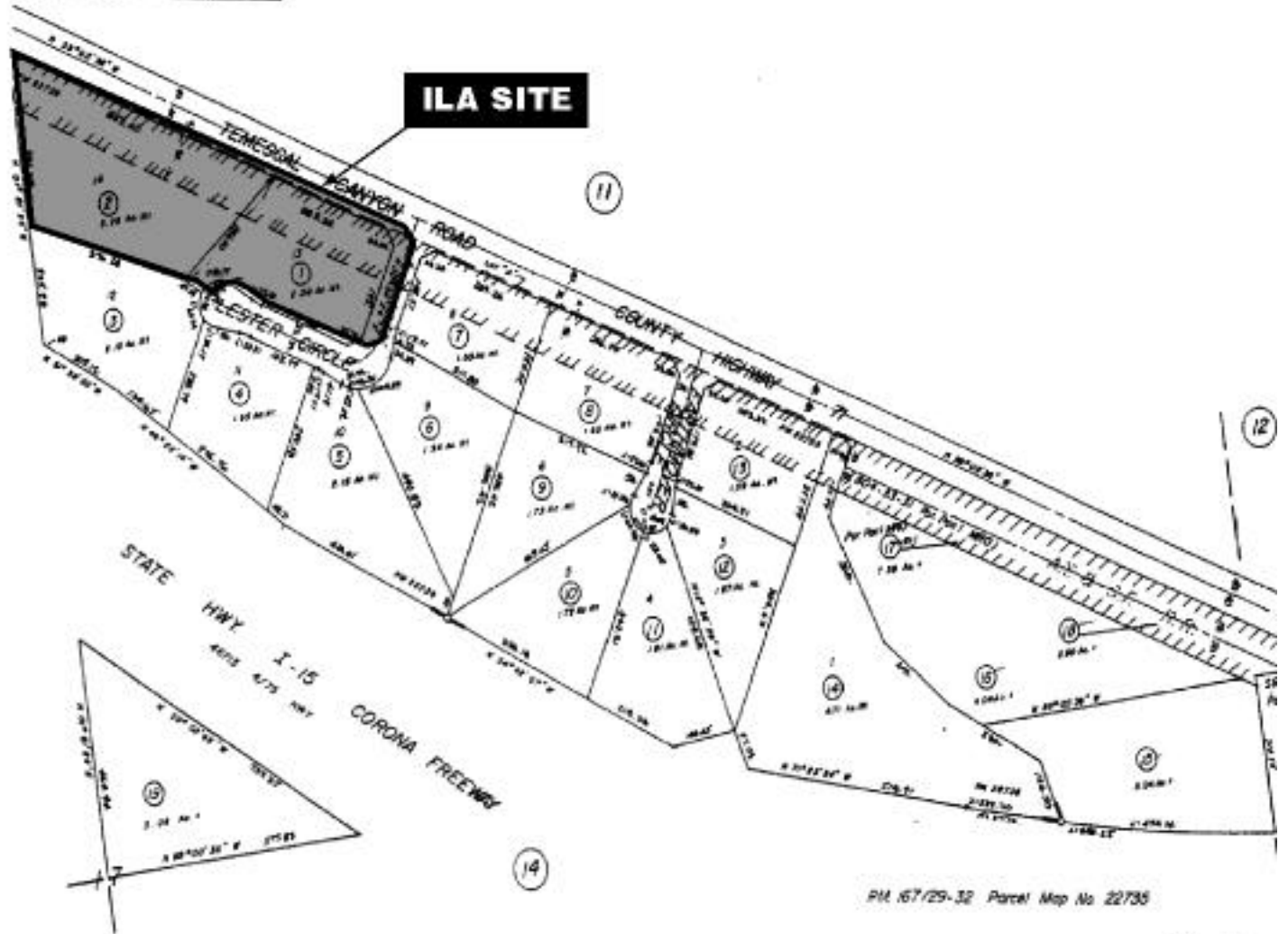


THIS MAP IS FOR  
ASSESSMENT PURPOSES ONLY

POR. N.E. 1/4 & POR. S.E. 1/4, SEC. 17, T.5S, R.5W

T.R.A. 065-028

**ILA SITE**



ASSESSOR'S MAP BK 391 PG 48  
RIVERSIDE COUNTY, CALIF

PAR. 167/29-32 Parcel Map No. 22730

FEB 1991  
STP

Scale: Map not to scale.

Figure 3. Corona ILA