

APPENDIX A

Notification and Scoping Meeting Materials

- A-1. Notice of Preparation
- A-2. NOP Mailing List
- A-3. Scoping Meeting Materials

APPENDIX A-1

Notice of Preparation

PUBLIC UTILITIES COMMISSION505 VAN NESS AVENUE
SAN FRANCISCO, CA 94102-3298

Notice of Preparation
Environmental Impact Report
for the
Miguel-Mission 230 kV #2 Transmission Line Project
Proposed by San Diego Gas and Electric Company
Application No. A-02-07-022

A. Introduction

San Diego Gas and Electric Company (SDG&E) has filed an application for a Certificate of Public Convenience and Necessity (CPCN) with the California Public Utilities Commission (CPUC) for its proposed Miguel-Mission 230 kV #2 Transmission Line Project. The CPUC has decided to prepare an Environmental Impact Report (EIR) for the proposed project in order to evaluate its potential environmental impacts under the California Environmental Quality Act (CEQA).

As required by CEQA, this Notice of Preparation is being sent to interested agencies and members of the public. The purpose of the NOP is to inform recipients that the Lead Agency is beginning the preparation of an EIR and to solicit information that will be helpful in determining the scope of the document. This notice includes a description of the project that SDG&E proposes to construct, a list of proposed project alternatives, a summary of potential project impacts, the times and locations of public scoping meetings, and information on how to provide comments to the CPUC.

B. Project Purpose and Need

According to SDG&E, the proposed project is needed to reduce constraints on its existing electrical system from the interconnection of new (and proposed) merchant generators located south and east of the Miguel Substation, including generators south of the U.S.-Mexico border. In addition, this proposed project would help further the objectives of Assembly Bill 970 (AB 970) of removing electrical transmission constraints within the SDG&E system. SDG&E expects that the additional generation and the proposed project would increase competition, which would benefit customers by reducing energy costs.

C. Project Description

The proposed project consists of three principal components: (1) the addition of a single-circuit 230 kV line, including replacement or modification of existing structures; (2) relocation of existing 69 kV/138 kV circuit onto new poles within the existing SDG&E-owned right-of-way; and (3) modifications to the Miguel and Mission Substations to accommodate the new 230 kV transmission line. Most of the construction would take place within the existing right-of-way on SDG&E-owned property. However, some substation modifications, staging and equipment storage areas, and construction access roads may require disturbing previously undisturbed land. All cleared areas not needed for operations or maintenance following construction, including staging areas and access roads, would be restored to their pre-construction condition. Project construction components are presented in Table 1.

Table 1 Summary of Project Components

Transmission System Modifications				
Transmission Circuits	Project Components	Transmission Section		Total Miguel to Mission Substation
		Miguel Substation to Fanita Junction	Fanita Junction to Mission Substation*	
New 230 kV Circuit including Tower Modifications	Section Length	24 miles	11 miles	35 miles
	138 kV Tower Modifications to Accommodate the 230 kV Circuit	60 towers	NA	60 towers
	138 kV Tower Replacements to Accommodate the 230 kV Circuit	31 poles	NA	31 poles
	New 230 kV Structures	11 poles	None	11 poles
	Number of 230 kV Poles to be reconducted	None	45	45 poles
Relocate Existing 69/138 kV Circuit	Length of New Line	24 miles	NA	24 miles
	New 138 kV steel pole structures	94 poles	NA	94 poles
	New 138 kV wood pole structures	14 poles	NA	14 poles
Substation Modifications				
Miguel and Mission Substation Modifications	<ul style="list-style-type: none"> ▪ New 230 kV circuit breakers and switching equipment would be added ▪ Bus and support structures would be added ▪ Control, protection and communication would be added ▪ New concrete foundations would be poured within the existing substations 			

* No towers in this segment require replacement. Only reconductoring would be required on the existing towers.

D. Project Location

As shown in Figure 1 (also see PEA Figure 1-1), the proposed project is located in San Diego County within SDG&E's existing right-of-way, between Miguel and Mission Substations. The right-of-way includes portions of the unincorporated county, the Cities of San Diego and Santee, and Marine Corps Air Station Miramar.

E. Potential Environmental Effects

In accordance with the CEQA guidelines, the CPUC intends to prepare an EIR to evaluate potential environmental effects of the proposed project, and to propose mitigation measures to reduce any significant effects identified. The EIR will also consider the environmental impacts of project alternatives.

Based on an Initial Study prepared for the proposed project on September 5, 2003, and the review of documents submitted by SDG&E and other parties to the CPUC's CPCN proceeding, it was determined that completion of the proposed project may result in a number of potentially significant environmental effects. Potential issues and impacts include those listed in the Initial Study (Attachment 1 and 2).

No determination has yet been made as to the significance of these potential issues or impacts. Such determinations will be made in the EIR. The Initial Study includes the CEQA Environmental Checklist that would be used as the basis for the analysis in the EIR, where relevant to the project. Issues raised in the scoping process will also be addressed, as well as the cumulative impacts of the proposed project in combination with other existing and planned projects in the area.

Mitigation Measures. SDG&E has proposed 66 Project Protocols to reduce or eliminate potential adverse project impacts. The effectiveness of these protocols, which are a part of SDG&E's proposed project, will be evaluated in the EIR. Additional measures (mitigation measures) will be developed to further reduce impacts, as required. When the CPUC makes its final decision on the project, it will define the mitigation measures to be adopted as a condition of project approval and require their implementation through a Mitigation Monitoring Program (MMP), as required by CEQA.

F. Alternatives

In addition to mitigation measures, the EIR will evaluate project alternatives that could reduce, eliminate, or avoid impacts of the proposed project. Alternatives could include system modifications, other transmission line routes and alternative methods of providing reliable electric power to the project area.

As required under CEQA, a Draft EIR must describe a reasonable range of alternatives to the proposed project that could feasibly attain most of the basic project objectives and avoid or lessen any of the significant environmental impacts of the proposed project. The consequences of the No Project Alternative, under which the proposed project would not be constructed, must also be evaluated in the EIR.

Based on the Proponent's Environmental Assessment (PEA), the alternatives that would be considered in the EIR include, but are not limited to:

No Project Alternative

Under this alternative, the project would not be built and, according to SDG&E, the system would be constrained and require costly transmission system congestion management procedures to maintain power system reliability.

System Alternatives

- Upgrade of the existing 69 kV/138 kV system by adding two new transformers and various bundling and re-conductoring of existing 69 kV and 138 kV transmission lines.
- Construction of a new 230 kV circuit from the Miguel Substation to a newly constructed Main Street Substation.
- Construction of a new 230 kV circuit from the Miguel Substation to a newly constructed Los Coches Substation.
- Construction of a new 230 kV circuit from the Miguel to Sycamore Substations.
- Use of congestion management and remedial action. This alternative would include transmission to the Miguel Substation only.

Energy Conservation and Load Management Alternatives

This alternative would include programs that could reduce electric peak demand or have the primary effect of shifting electric demand from peak to non-peak time periods.

Route Design Alternatives

SDG&E considered, but eliminated from further consideration, construction of a new transmission line in a new right-of-way between the Miguel and Mission Substations, as being infeasible.

No alternatives have been identified for the modifications to the 230 kV line. The following potential route design alternatives apply to the 69 kV/138 kV line and would be located within the existing transmission right-of-way (See Figure 2) (same as PEA Figure 1-5):

- Subsection A: Installation of the relocated 69 kV/138 kV circuits onto a new pole line on the west side of the existing right-of-way to reduce impacts on adjacent housing, from Miguel Substation to Tower #28.
- Subsection B: Installation of the relocated 69 kV/138 kV pole line structure to 12 feet from the east edge of the existing right-of-way, from Tower #28 to Tower #5.
- Subsection C: Installation of the relocated 69 kV/138 kV pole structure line to a centered position between the two existing lattice tower structures, from Tower #5 to Los Coches Substation.
- Subsection D: Construction of the 69 kV/138 kV pole structure line 12 feet from the west edge of the right-of-way, from Los Coches Substation to Tower # 37.
- Subsection E: Installation of the relocated 69 kV/138 kV pole line approximately 12 feet from the south edge of the right-of-way, from Tower #37 to Fanita Junction.

Alternative Technologies

Underground installation of part or all of the proposed transmission lines.

Other Alternatives

In addition to the PEA alternatives listed above, additional alternatives will be evaluated for full analysis and consideration in the Draft EIR based on additional input from agencies and the public and additional independent analysis by the CPUC environmental team.

G. Public Scoping Meetings

The CPUC will conduct two public Scoping Meetings in two locations in the project area, as shown in the table below. The purpose of these meetings is to present information about the proposed project and the CPUC’s decision-making process, and to listen to the views of the public on the range of issues relevant to the preparation of the Draft EIR.

Public Scoping Meetings

Date	Monday September 15, 2003	Tuesday September 16, 2003
Time	5:30 pm – 7:30 pm	7 pm – 9 pm
Location	Spring Valley Branch Library 836 Kempton Street Spring Valley, CA 91977	Santee City Hall 10601 Magnolia Ave, Building 7 Santee, CA 92071
Directions	<i>From the El Cajon area:</i> Take I-8 West towards San Diego and merge onto CA-125 South. Take the CA-94 East/Spring St. exit and turn left onto Spring St. Turn right onto Broadway. Turn left onto Sweetwater Rd. Turn left onto Jamacha Rd. Turn right onto Kempton St.	<i>From the El Cajon area:</i> Take Highway 67 North towards Santee/Lakeside/Ramona. Take the Prospect Ave. exit towards Santee and turn left onto Prospect Ave. Turn right onto N Magnolia Ave.

H. Scoping Comments

At this time, the CPUC is soliciting information regarding the topics and alternatives that should be included in the EIR. Suggestions for submitting scoping comments are presented at the end of this section. **All comments must be postmarked by October 5, 2003.** You may submit comments in a variety of ways: (1) by mail, (2) by electronic mail, (3) by fax, or (4) by attending a Public Scoping Meeting (see times and locations above) and making a verbal statement or handing in a written comment at the meeting.

By Mail: If you send comments by mail, please use first-class mail and be sure to include your name and a return address. Please send written comments on the scope of the EIR to:

**Roosevelt Grant
California Public Utilities Commission
c/o Aspen Environmental Group
1760 Creekside Oaks Drive, Suite 170
Sacramento, California 95833
Phone and Voicemail: (619) 353-5044**

By Electronic Mail: E-mail communications are welcome; however, please remember to include your name and return address in the e-mail message. E-mail messages should be sent to miguelmission@aspeneg.com.

By Fax: You may fax your comment letter to our information line at (619) 353-5044. Please remember to include your name and return address in the fax.

A **Scoping Report** will be prepared, summarizing all comments received (including oral comments made at the Scoping Meetings). This report will be posted on the project website and copies will be placed in local libraries.

Suggestions for Effective Participation in Scoping

Following are some suggestions for preparing and providing the most useful information for the EIR scoping process.

1. **Review the description of the project** (see Section B of this Notice of Preparation and the maps provided). Additional detail on the project description is available on the project website or in SDG&E's Proponent's Environmental Assessment, copies of which are available at several local libraries (see website and repository addresses below).
2. **Review the project Initial Study** (Attachment 1).
3. **Attend the scoping meetings** to get more information on the project and the environmental review process (see times and dates above).
4. **Submit written comments** or attend the scoping meetings and **make oral comments**. Explain important issues that the EIR should cover.
5. **Suggest mitigation measures** that could reduce the potential impacts associated with SDG&E's proposed project.
6. **Suggest alternatives** to SDG&E's proposed project that could avoid or reduce the impacts of the proposed project.

I. For Additional Project Information

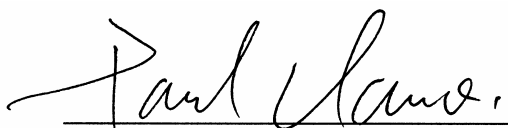
Internet Website: Information about this application and the environmental review process will be posted on the Internet at: http://www.cpuc.ca.gov/Environment/info/aspen/miguel_mission/miguelmission.htm. This site will be used to post all public documents during the environmental review process and to announce upcoming public meetings.

Project Information Hotline. You may request project information by leaving a voice message or sending a fax to **(619) 353-5044**.

Document Repositories. SDG&E's Proponent's Environmental Assessment (PEA) is available for review at several area libraries. The PEA includes a detailed description of the project that SDG&E proposes to construct, and evaluates potential impacts of the project from SDG&E's perspective.

Serra Mesa Branch Library 3440 Sandrock Road San Diego, CA 92123-2198	Benjamin Branch Library 5188 Zion Avenue San Diego, CA 92120-2728	Tierrasanta Branch Library 4985 La Cuesta Drive San Diego, CA 92124-2601
Santee Branch Library 9225 Carlton Hills Boulevard #17 Santee, CA 92071	Lakeside Branch Library 9839 Vine Street Lakeside, CA 92040	Cresta Branch Library 105 Juanita Lane El Cajon, CA 92021
El Cajon Branch Library 201 East Douglas El Cajon, CA 92020	Rancho San Diego Branch Library 111555 Via Rancho San Diego El Cajon, CA 92019	Casa De Oro Branch Library 9805 Campo Road Spring Valley, CA 91977
Spring Valley Branch Library 836 Kempton Street Spring Valley, CA 91977	Bonita/Sunnyside Branch Library 5047 Central Avenue Bonita, CA 91902	Eastlake Branch Library 1120 Eastlake Parkway Chula Vista, CA 91913

The California Public Utilities Commission hereby issues this Notice of Preparation of an Environmental Impact Report.



Paul Clanon, Director
Energy Division
California Public Utilities Commission

September 5, 2003
Date

ATTACHMENT 1

Summary of Potential Issues or Impacts: Miguel Mission 230 kV #2 Project

Environmental Issue Area	Potential Issues or Impacts
Aesthetics	<ul style="list-style-type: none"> • Visibility of the transmission line and its impact on views from established recreation areas, facilities, trails, and other notable landmarks including: Mission Trails Regional Park, Louis A. Stelzer County Park, Lake Jennings Regional Park, Santee Lakes Regional Park and Recreation Area, Singing Hills Country Club, and Cottonwood at Rancho San Diego Golf Course. • Visibility of the transmission line and its impact on sensitive residential areas within one mile of the proposed transmission line, including: City of Santee, City of El Cajon, and San Diego County unincorporated communities (Spring Valley, Lakeside, Dehesa, and Granite Hills) • Visibility of the overhead transmission lines and their potential blockage of the higher visual quality natural landscape features along Scenic and Recreation roadways, including: Eligible State Scenic Highways (State Route 52, 94, and Interstate 8), Eligible County Scenic Roads (Willow Road, Willow Glen Road, El Monte Road), and Recreation Destination Routes (State Route 67, Wildcat Canyon Road, Lake Jennings Park Road, Willow Glen Road) • Duration of visibility of construction materials, equipment, and debris.
Agricultural Resources	<ul style="list-style-type: none"> • No issues identified.
Air Quality	<ul style="list-style-type: none"> • Project construction will produce short-term air emissions from heavy-duty diesel and gasoline powered construction equipment (fugitive dust, vehicle and equipment exhaust). • Project may indirectly affect emissions from stationary sources related to power generation along the U.S./Mexico border, which in turn could adversely affect the implementation of the SDAPCD Regional Air Quality Strategy.
Biological Resources	<ul style="list-style-type: none"> • Project construction could impact rare, threatened, or endangered species in the project area. • Construction in the project right-of-way could affect sensitive habitats and wildlife corridors, including: the San Diego and Sweetwater Rivers; tributary ephemeral drainages (including Forester and Los Coches Creeks); vernal pools; native coastal sage scrub and chaparral; and non-native grasslands. • Overhead transmission lines could cause bird electrocution and collision.
Cultural and Paleontological Resources	<ul style="list-style-type: none"> • Some fossil-bearing geologic formations that are located in the proposed project area could be impacted. • Potential construction-related impacts to known and unrecorded prehistoric and historic resources.
Geology and Soils	<ul style="list-style-type: none"> • Strong ground shaking could damage facilities, especially along the western portion of the proposed route. • Slope stability is an issue over portions of the route. • Ground failure, including liquefaction, lateral spreading and differential settlement could impact the proposed project where tower footings are located within the alluvial deposits over shallow groundwater. • Project construction and subsequent maintenance operations, especially along hillsides, could cause significant soil erosion or loss of topsoil.

Environmental Issue Area	Potential Issues or Impacts
Hazards and Hazardous Materials	<ul style="list-style-type: none"> • Substation operation could result in release of transformer mineral oil if equipment fails. • Underground storage tanks and leaking underground storage tanks in the vicinity of the project. Contamination from these sites could have migrated to the project area and could affect construction workers and the public during project construction. • Potential release of fuels and lubricants during construction. • [See discussion EMF under “other issues”, below]
Hydrology and Water Quality	<ul style="list-style-type: none"> • Project construction affect surface water flow and erosion rates causing subsequent downstream sedimentation and reduced surface water quality. • At least one proposed tower is at a location potentially subject to flooding and eventual capture by erosion by the adjacent (West Sycamore Canyon) creek. • Concern over towers in locations potentially subject to flooding, which could impede or redirect flood flows.
Land Use and Planning	<ul style="list-style-type: none"> • Proposed transmission line project would traverse lands under the jurisdiction of the U.S. Department of Defense (MCAS Miramar), the California State Lands Commission (San Diego Sweetwater river bottoms), San Diego County, and the Cities of San Diego and Santee. • Twenty-seven schools are located in the project area, including three schools within a quarter mile of the proposed project route (e.g., Steele Canyon High School); • Potential conflict of transmission lines with two habitat conservation plans applicable to the project area. • Potential conflict of transmission lines with residences, parks, golf courses, commercial areas, and transportation corridors.
Mineral Resources	<ul style="list-style-type: none"> • No issues identified.
Noise	<ul style="list-style-type: none"> • Construction would generate short-term noise in several locations, including in the vicinities of residences, recreational uses, hospitals, or schools. • Concern about ground-borne vibration, because the project would require excavation work and possible blasting near residences, schools, and certain industrial uses that may be sensitive to vibration. • Aboveground portions of the proposed transmission line and substation upgrades may generate corona noise at levels above existing conditions.
Population and Housing	<ul style="list-style-type: none"> • No issues identified.
Public Services and Utilities	<ul style="list-style-type: none"> • Construction along streets and linear ROWs could disrupt local and regional services provided through underground utilities.
Recreation	<ul style="list-style-type: none"> • Potentially reduced quality of recreational experiences in open spaces and recreational facilities. • Recreational facilities in the proposed project corridor that could be affected include: Class II Bikeways, Mission Trails Regional Park, Louis A. Stelzer County Park, Lake Jennings Regional Park, Santee Lakes Regional Park and Recreation Area, Singing Hills Country Club, Cottonwood at Rancho San Diego Golf Course, Admiral Baker Golf Course, and San Diego River.
Transportation and Traffic	<ul style="list-style-type: none"> • Construction of the project could affect traffic flow, parking, road usage, and property access.

Environmental Issue Area	Potential Issues or Impacts
Other Issues	<ul style="list-style-type: none">• There is public concern about Electric and Magnetic Field (EMF) effects of the transmission lines.• Concern about location of the transmission line near schools and residential areas.

ATTACHMENT 2**ENVIRONMENTAL CHECKLIST**

Following are the questions included in the California Environmental Quality Act's (CEQA) environmental checklist. These are issues that may be evaluated in an Environmental Impact Report, if they are determined to be relevant to the project.

I. AESTHETICS. Would the project:

- Have a substantial adverse effect on a scenic vista?
- Substantially damage scenic resources, including, but not limited to, trees, rock outcroppings, and historic buildings within a state scenic highway?
- Substantially degrade the existing visual character or quality of the site and its surroundings?
- Create a new source of substantial light or glare which would adversely affect day or nighttime views in the area?

II. AGRICULTURE RESOURCES. In determining whether impacts to agricultural resources are significant environmental effects, lead agencies may refer to the California Agricultural Land Evaluation and Site Assessment Model (1997) prepared by the California Dept. of Conservation as an optional model to use in assessing impacts on agriculture and farmland. Would the project:

- Convert Prime Farmland, Unique Farmland, or Farmland of Statewide Importance (Farmland), as shown on the maps prepared pursuant to the Farmland Mapping and Monitoring Program of the California Resources Agency, to non-agricultural use?
- Conflict with existing zoning for agricultural use, or a Williamson Act contract?
- Involve other changes in the existing environment which, due to their location or nature, could result in conversion of Farmland, to non-agricultural use?

III. AIR QUALITY. Where available, the significance criteria established by the applicable air quality management or air pollution control district may be relied upon to make the following determinations. Would the project:

- Conflict with or obstruct implementation of the applicable air quality plan?
- Violate any air quality standard or contribute substantially to an existing or projects air quality violation?
- Result in a cumulatively considerable net increase of any criteria pollutant for which the project region is non-attainment under an applicable federal or state ambient air quality standard (including releasing emissions which exceed quantitative thresholds for ozone precursors)?
- Expose sensitive receptors to substantial pollutant concentrations?
- Create objectionable odors affecting a substantial number of people?

IV. BIOLOGICAL RESOURCES. Would the project:

- Have a substantial adverse effect, either directly or through habitat modifications, on any species identified as a candidate, sensitive, or special status species in local or regional plans, policies, or regulations, or by the California Department of Fish and Game or U.S. Fish and Wildlife Service?

- Have a substantial adverse effect on any riparian habitat or other sensitive natural community identified in local or regional plans, policies, regulations, or by the California Department of Fish and Game or US Fish and Wildlife Service?
- Have a substantial adverse effect on federally protected wetlands as defined by Section 404 of the Clean Water Act (including, but not limited to, marsh, vernal pool, coastal, etc.) through direct removal, filling, hydrological interruption, or other means?
- Interfere substantially with the movement of any native resident or migratory fish or wildlife species or with established native resident or migratory wildlife corridors or impede the use of native wildlife nursery sites?
- Conflict with any local policies or ordinances protecting biological resources, such as a tree preservation policy or ordinance?
- Conflict with the provisions of an adopted Habitat Conservation Plan, Natural Community Conservation Plan, or other approved local, regional, or state habitat conservation plan?

V. CULTURAL RESOURCES. Would the project:

- Cause a substantial adverse change in the significance of a historical resource as defined in §15064.5?
- Cause a substantial adverse change in the significance of an archaeological resource pursuant to §15064.5?
- Directly or indirectly destroy a unique paleontological resource or site unique geologic feature?
- Disturb any human remains, including those interred outside of formal cemeteries?

VI. GEOLOGY AND SOILS. Would the project:

- Expose people or structures to potential substantial adverse effects, including the risk of loss, injury, or death involving:
 - Rupture of a known earthquake fault, as delineated on the most recent Alquist-Priolo Earthquake Fault Zoning Map issued by the State Geologist for the area or based on other substantial evidence of a known fault? (Refer to the California Division of Mines and Geology Spec. Pub. 42)
 - Strong seismic ground shaking?
 - Seismic-related ground failure, including liquefaction?
 - Landslides?
- Result in substantial soil erosion or the loss of topsoil?
- Be located on a geologic unit or soil that is unstable, or that would become unstable as a result of the project, and potentially result in on- or off-site landslide, lateral spreading, subsidence, liquefaction or collapse?
- Be located on expansive soil, as defined in Table 18-1-B of the Uniform Building Code (1994), creating substantial risks to life or property?
- Have soils incapable of adequately supporting the use of septic tanks or alternative waste water disposal systems where sewers are not available for the disposal of wastewater?

VII. HAZARDS AND HAZARDOUS MATERIALS. Would the project:

- Create a significant hazard to the public or the environment through the routine transport, use, or disposal of hazardous materials?
- Create a significant hazard to the public or the environment through reasonably foreseeable upset and accident conditions involving the release of hazardous materials into the environment?

- Emit hazardous emissions or handle hazardous or acutely hazardous material, substances, or waste within one-quarter mile of an existing or proposed school?
- Be located on a site which is included on a list of hazardous materials sites compiled pursuant to Government Code Section 65962.5 and, as a result, would it create a significant hazard to the public or the environment?
- For a project located within an airport land use plan or, where such a plan has not been adopted, within two miles of a public airport or public use airport, would the project result in a safety hazard for people residing or working in the project area?
- For a project within the vicinity of a private airstrip, would the project result in a safety hazard for people residing or working in the project area?
- Impair implementation of or physically interfere with an adopted emergency response plan or emergency evacuation plan?
- Expose people or structures to a significant risk of loss, injury, or death involving wild-land fires, including where wild-lands are adjacent to urbanized areas or where residences are intermixed with wild-lands?

VIII. HYDROLOGY AND WATER QUALITY. Would the project:

- Violate any water quality standards or waste discharge requirements?
- Substantially deplete groundwater supplies or interfere substantially with groundwater recharge such that there would be a net deficit in aquifer volume or a lowering of the local groundwater table level (e.g., the production rate of pre-existing nearby wells would drop to a level which would not support existing land uses or planned uses for which permits have been granted)?
- Substantially alter the existing drainage pattern of the site or area, including through the alteration of the course of a stream or river, in a manner, which would result in substantial erosion or situation on- or off-site?
- Substantially alter the existing drainage pattern of the site or area, including through the alteration of the course of a stream or river, or substantially increase the rate or amount of surface runoff in a manner, which would result in flooding on- or off-site?
- Create or contribute runoff water, which would exceed the capacity of existing or planned stormwater drainage systems or provide substantial additional sources of polluted runoff?
- Otherwise substantially degrade water quality?
- Place housing within a 100-year flood hazard area as mapped on a federal Flood Hazard Boundary or Flood Insurance Rate Map or other flood hazard delineation map?
- Place within a 100-year flood hazard area structures, which would impede or redirect flood flows?
- Expose people or structures to a significant risk of loss, injury or death involving flooding, including flooding as a result of the failure of a levee or dam?
- Inundation by seiche, tsunami, or mudflow?

IX. LAND USE AND PLANNING. Would the project:

- Physically divide an established community?
- Conflict with any applicable land use plan, policy, or regulation of an agency with jurisdiction over the project (including, but not limited to the general plan, specific plan, local coastal program, or zoning ordinance) adopted for the purpose of avoiding or mitigating an environmental effect?

- Conflict with any applicable habitat conservation plan or natural community conservation plan?
- Result in the loss of availability of a known mineral resource that would be of value to the region and the residents of the state?
- Result in the loss of availability of a locally important mineral resource recovery site delineated on a local general plan, specific plan, or other land use plan?

X. NOISE. Would the project result in:

- Exposure of persons to or generation of noise levels in excess of standards established in the local general plan or noise ordinance, or applicable standards of other agencies?
- Exposure of persons to or generation of excessive ground borne vibration or ground borne noise levels?
- A substantial permanent increase in ambient noise levels in the project vicinity above levels existing without the project?
- A substantial temporary or periodic increase in ambient noise levels in the project vicinity above levels existing without the project?
- For a project located within an airport land use plan or, where such a plan has not been adopted, within two miles of a public airport or public use airport, would the project expose people residing or working in the project area to excessive noise levels?
- For a project within the vicinity of a private airstrip, would the project expose people residing or working in the project area to excessive noise levels?

XI. POPULATION AND HOUSING. Would the project:

- Induce substantial population growth in an area, either directly (e.g., by proposing new homes and businesses) or indirectly (e.g., through extensions of roads or other infrastructure)?
- Displace substantial numbers of existing housing, necessitating the construction of replacement housing elsewhere?
- Displace substantial numbers of people, necessitating the construction of replacement housing elsewhere?

XII. PUBLIC SERVICES AND UTILITIES.

- Would the project result in substantial adverse physical impacts associated with the provision of new or physically altered governmental facilities, need for new or physically altered governmental facilities, the construction of which could cause significant environmental impacts, in order to maintain acceptable service ratios, response times or other performance objectives for any of the public services:
 - Fire protection?
 - Police Protection?
 - Schools?
 - Parks?
 - Other public facilities?
- Exceed wastewater treatment requirements of the applicable Regional Water Quality Control Board?
- Require or result in the construction of new water or wastewater treatment facilities or expansion of existing facilities, the construction of which could cause significant environmental effects?
- Require or result in the construction of new storm water drainage facilities or expansion of existing facilities, the construction of which could cause significant environmental effects?

- Have sufficient water supplies available to serve the project from existing entitlements and resources, or are new or expanded entitlements needed?
- Result in a determination by the wastewater treatment provider, which serves or may serve the project that it has adequate capacity to serve the project's projected demand in addition to the provider's existing commitments?
- Be served by a landfill with sufficient permitted capacity to accommodate the project's solid waste disposal needs?
- Comply with federal, state, and local statutes and regulations related to solid waste?

XIII. RECREATION. Would the project:

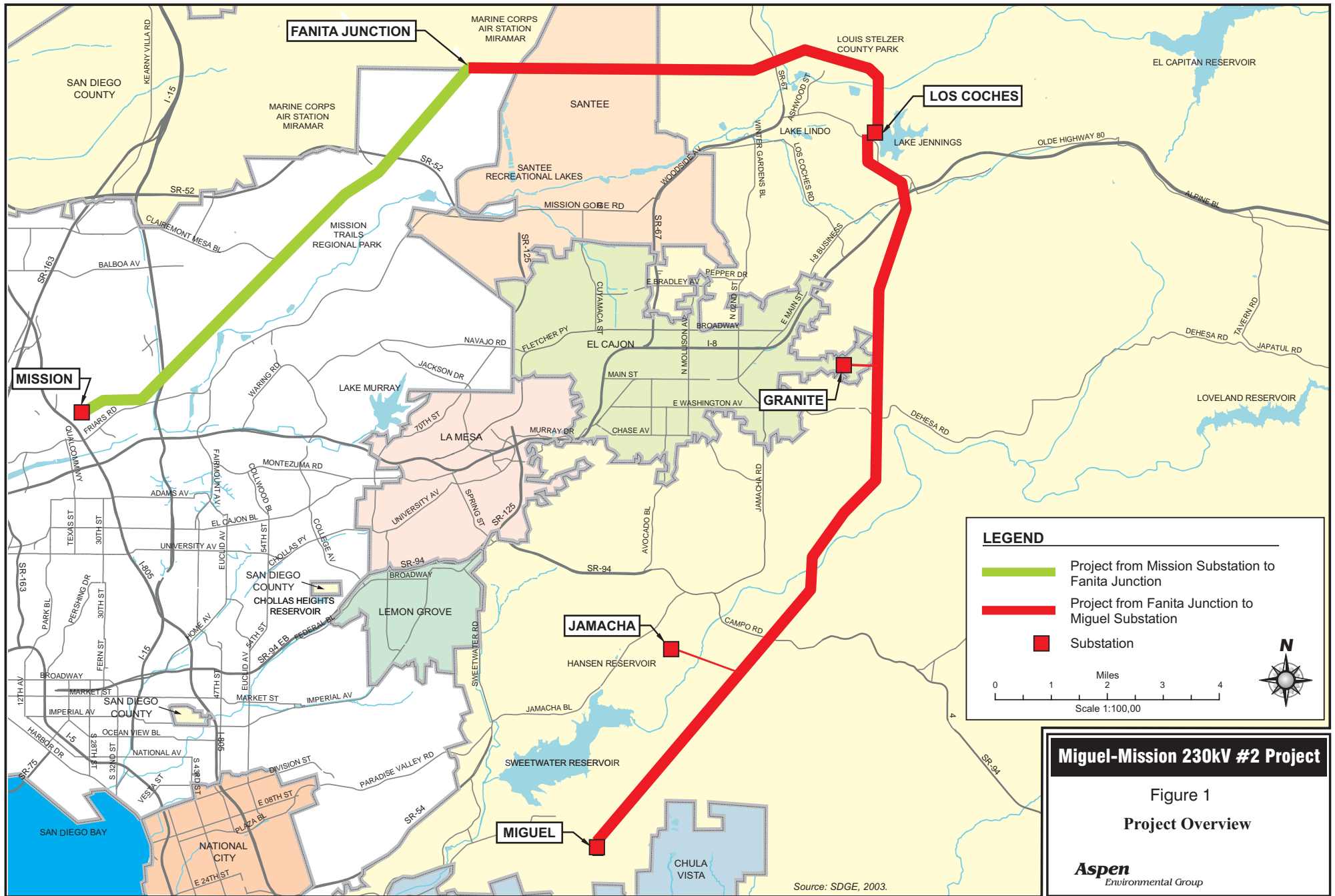
- Increase the use of existing neighborhood, and regional parks or other recreational facilities such that substantial physical deterioration of the facility would occur or be accelerated?
- Include recreational facilities or require the construction or expansion of recreational facilities, which might have an adverse physical effect on the environment?

XIV. TRANSPORTATION/TRAFFIC. Would the project:

- Cause an increase in traffic, which is substantial in relation to the existing traffic load and capacity of the street system (i.e., result in a substantial increase in either the number of vehicle trips, the volume to capacity ratio on roads, or congestion at intersections)?
- Exceed, either individually or cumulatively, a level of service standard established by the county congestion management agency for designated roads or highways?
- Result in a change in air traffic patterns, including either an increase in traffic levels or a change in location that results in substantial safety risks?
- Substantially increase hazards due to a design feature (e.g., sharp curves or dangerous intersections) or incompatible uses?
- Result in inadequate emergency access?
- Result in inadequate parking capacity?
- Conflict with adopted policies supporting alternative transportation (e.g., bus turnouts, bicycle racks)?

GENERAL ISSUES:

- Does the project have the potential to degrade the quality of the environment, substantially reduce the habitat of a fish or wildlife species, cause a fish or wildlife population to drop below self-sustaining levels, threaten to eliminate a plant or animal community, reduce the number or restrict the range of a rare or endangered plant or animal or eliminate important examples of the major periods of California history or prehistory?
- Does the project have impacts that are individually limited, but cumulatively considerable? ("Cumulatively considerable" means that the incremental effects of a project are considerable when viewed in connection with the effects of past projects, the effects of other current projects, and the effects of probable future projects.)
- Does the project have environmental effects, which will cause substantial adverse effects on human beings, either directly or indirectly?

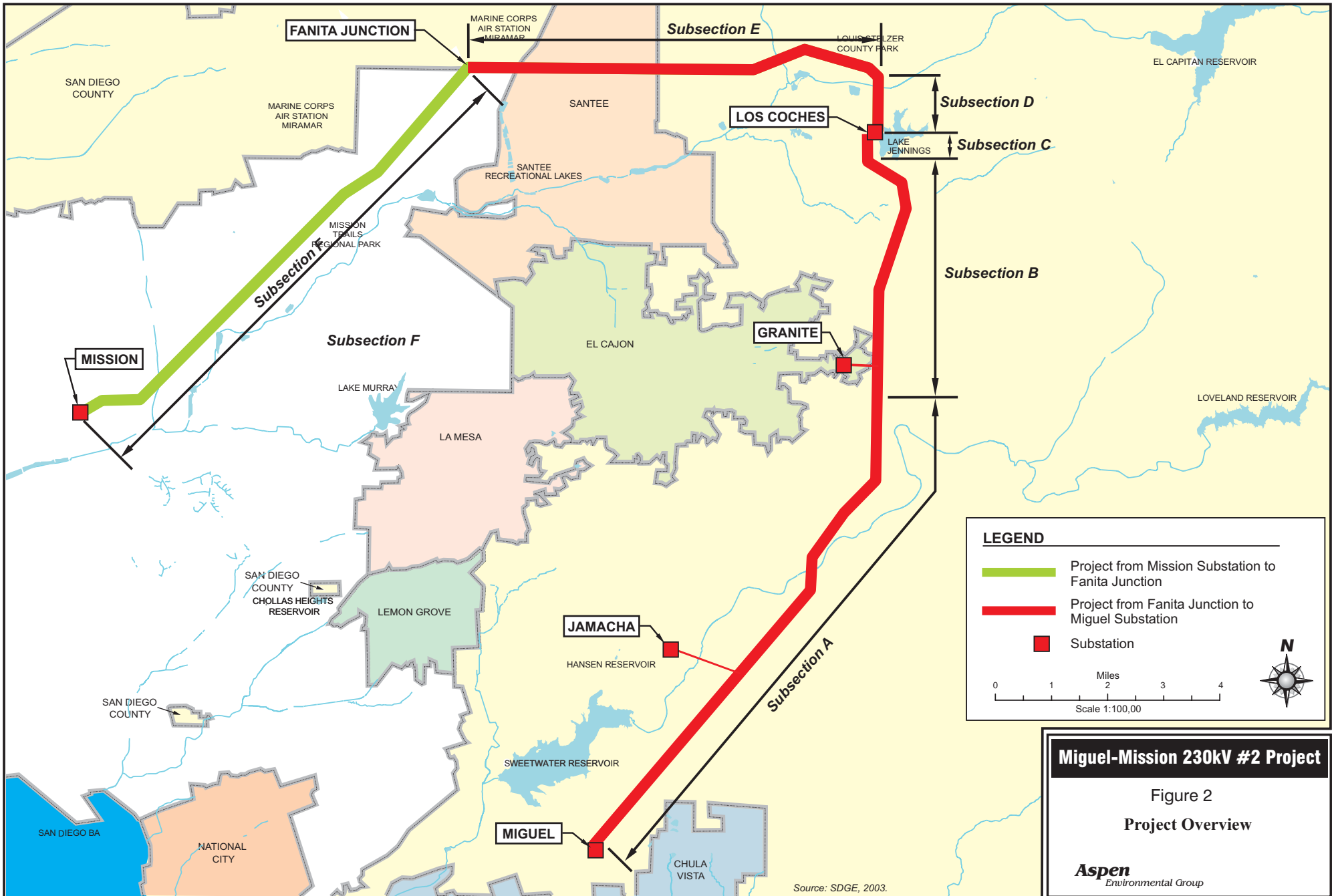


Miguel-Mission 230kV #2 Project

Figure 1
Project Overview

Aspen
Environmental Group

Source: SDGE, 2003.



Source: SDGE, 2003.

Miguel-Mission 230kV #2 Project

Figure 2
Project Overview

Aspen
Environmental Group

APPENDIX A-2

NOP Mailing List

Miguel-Mission 230 kV #2 Project
SCOPING REPORT APPENDIX A-2. NOP MAILING LIST

CARLOS JR & EVANGELINE ABEYTA FAM
2432 BARTEL PL
SAN DIEGO CA 92123

ROBERT F & MERCEDES M ABRAMS
10811 VALLE VISTA RD
LAKESIDE CA 92040

SABAH ABRO
1064 SINGING RIDGE RD
EL CAJON CA 92019

JAMES & JULIE ACHENBACH
10066 PRINCE CHARMING LN
SANTEE CA 92071

DANIEL T & LAURA L ALBRIGHT
10843 STONEY CREEK CT
SANTEE CA 92071

SAAD & NAWAL AL-ESHAKI
3008 LASVEN CT
EL CAJON CA 92019

KIMBERLY S ALLEN
12029 SERENA RD
LAKESIDE CA 92040

WYATT JR & DOROTHY L ALLEN
10712 PALM ROW
LAKESIDE CA 92040

MICHAEL D & NANCY L ALLENSON
1691 SWEENEY CT
EL CAJON CA 92019

JOHN P & TAMELA L ALVAERNAZ
11135 MORENO AVE
LAKESIDE CA 92040

JOHN P & TAMELA L ALVERNAZ
11135 MORENO AVE
LAKESIDE CA 92040

RONALD W & NANCY TRS ANDERSON
11351 EUCALYPTUS HILLS DR
LAKESIDE CA 92040

JOY M ANDREWS
2356 HARCOURT DR
SAN DIEGO CA 92123

WILLIAM C & MARGIE G ANNETT
10954 EASTHAVEN CT
SANTEE CA 92071

TITO F & GUIA A AREVALO
2432 MELBOURNE DR
SAN DIEGO CA 92123

ROBERT B & LORENA M ARNOLD
2552 WILLOW GLEN DR
EL CAJON CA 92019

FRANK L & SHARON L ASARO FAMILY
2230 INDIA ST
SAN DIEGO CA 92101

THOMAS F & FARRAH J ASKINS
9114 GAUCHO LN
EL CAJON CA 92021

PETER P ASTOR
3603 VISTA DE LA BAHIA
SAN DIEGO CA 92117

JEFFERSON D JR&CINDY P ATKINS
10928 VALLE VISTA RD
LAKESIDE CA 92040

JOHN A & DAWN ATKINS
11412 PALABRA CT
SAN DIEGO CA 92124

LORIE F ATOE
3141 JAMACHA VIEW DR
EL CAJON CA 92019

ALBERTO ATTIQ
3134 JAMACHA VIEW DR
EL CAJON CA 92019

BRIAN K&VERA C AUGÉ
2819 OLD CALIFORNIA WAY
EL CAJON CA 92019

CATHLEEN E AUSTIN
10861 EASTHAVEN CT
SANTEE CA 92071

FRANCES DIDOMENICO AXELSON
10765 VALLE VISTA RD
LAKESIDE CA 92040

LLOYD R AYERS
14027 RANCHO DEL VILLA
LAKESIDE CA 92040

DAVID J III & GLORIA T BACA
2346 MAUDEY BELL CT
EL CAJON CA 92019

MARCUS&WENDY BADAMI
10068 SIR LANCELOT DR
SANTEE CA 92071

VICTOR&SHAREEN BAGDASAR
3106 JAMACHA VIEW DR
EL CAJON CA 92019

MICHAEL O & GERALDINE BAKER
13899 DEANLY CT
LAKESIDE CA 92040

BALSAMO ANGELA BALSAMO
1823 OLDFIELD CT
EL CAJON CA 92019

ETHAN L BANEGAS
2920 WILLOW GLEN DR
EL CAJON CA 92019

JAMES S & ANNE K BAPTISTE
2503 SINGING VISTA WAY
EL CAJON CA 92019

MICHAEL G & LISA M BARNES
13887 CHERYL CREEK DR
EL CAJON CA 92021

PATRICK & DONNA J BARTOL
2515 VISTA RODEO DR
EL CAJON CA 92019

FRANK & GINGER BASS
14038 CHERYL LEE CT
LAKESIDE CA 92040

CHARLES B & CARLA M BATTLE
14024 RANCHO DEL VILLA
EL CAJON CA 92021

CHRISTOPHER W & VIRGINIA E BAYUK
2852 WINDWOOD WAY
EL CAJON CA 92019

MARIE T BEAN
RTE 3 DUTCH ROAD
CENTRAL SQUARE NY 13036

JOHN W & ELSIE BECK
10024 DUNBAR LN
EL CAJON CA 92021

KEN BECKER
21 W. STUART AVE
REDLANDS CA 92374

THOMAS L BEDFORD & KRIS E EITLAND
12455 RAGWEED ST
SAN DIEGO CA 92129

E THOMAS II & HELEN T BEEDE
13891 DEANLY WAY
SAN DIEGO CA 92130

IDA M BEEUNAS
42121 MORAN LN
LEBANON OR 97355

WAYNE A & TAMI M BEEUNAS
9126 RONDA AVE
SAN DIEGO CA 92123

ANDREW T & MELODY J BELCHER
13874 CHERYL CREEK DR
EL CAJON CA 92021

JAMES L & TINA M BELL
2472 EILEEN DR
SAN DIEGO CA 92123

ALFRED L & AGNES BELLROSE
9030 RONDA AVE
SAN DIEGO CA 92123

STEVE & TAMARA BENKOSKY
13892 CHERYL CREEK DR
EL CAJON CA 92021

JAN R BEVERLEY
2433 BARTEL ST
SAN DIEGO CA 92123

YOUSIF & SAMAHA BIBO
2137 RICARD CT
EL CAJON CA 92019

ANTHONY M&CINDY L BIER
3240 MAIN ST
LEMON GROVE CA 91945

RALPH L JR & SALLY A BIGGERS
2409 CERRO SERENO
EL CAJON CA 92019

JOHN R&KATHY B BILBREY
10225 VISTA DE LA CRUZ
LA MESA CA 91941

BREWSTER BIRDSALL
ASPEN ENVIRONMENTAL GROUP
235 MONTGOMERY ST. #935
SAN FRANCISCO CA 94104

MICHAEL M BLANKENSHIP
10867 PRINCE VALIANT DR
SANTEE CA 92071

MARY E BLOOMINGDALE
8262 UNIVERSITY AVE
LA MESA CA 91941

ATANCIO L & NOBUKO BOBADILLA
11469 VIA PROMESA
SAN DIEGO CA 92124

RONALD P&CAROLYN K BOLAND
10950 VISTA CAMINO
LAKESIDE CA 92040

Miguel-Mission 230 kV #2 Project
SCOPING REPORT APPENDIX A-2. NOP MAILING LIST

JACK BONGIOVANNI 10516 QUAIL CANYON RD EL CAJON CA 92021	CHRISTOPHER J BWY 9165 RONDA AVE SAN DIEGO CA 92123	SHIH CHING CHIANG 14381 RIOS CANYON RD EL CAJON CA 92021
KEVIN M & ROBYN L BOTTICELLI 14018 RANCH DEL VILLA LAKESIDE CA 92040	LEONARD W&DEBBIE A BYRD 10966 FILLBROOK DR LAKESIDE CA 92040	RAYMOND C&MICHELLE CHRISTENSEN 3060 JAMACHA VIEW DR EL CAJON CA 92019
KEVIN M & ROBYN L BOTTICELLI 14018 RANCHO DEL VILLA LAKESIDE CA 92040	GREGORY W & NICOLYN M CABY 117C RUSSELL PKY #198 WARNER ROBINS GA 31088	ROGER C & TINA M CHRISTIANSON 2496 COLINAS PASEO EL CAJON CA 92019
ROBERT G BOURNE 9050 RONDA AVE SAN DIEGO CA 92123	ALBERT N & SUSAN K CADENA 68095 ENCINITAS RD CATHEDRAL CITY CA 92234	MARK A & TAMMIE T CHRYSLER 13814 CHERYL CREEK DR EL CAJON CA 92021
DOUGLAS C BOWLBY 3501 CAROWAY CT EL CAJON CA 92019	KENNETH R CALLAHAN 9940 WALDGROVE PL SAN DIEGO CA 92131	JAE JIN & KYUNG HEE CHUNG 4505 TEMPRANO CT SAN DIEGO CA 92124
DAVID R JR & JANICE A BOYLES 13731 CHOISSER LN LAKESIDE CA 92040	KEVIN CALLAHAN 9453 GOODWICK CT SAN DIEGO CA 92123	DUANE J&ELIZABETH CIUCHTA 10101 SIR LANCELOT DR SANTEE CA 92071
LEON T & BETTY L BRAMWELL 12150 PAGOSA LN LAKESIDE CA 92040	KEITH E & REBECCA A CALLEN 13892 DEANLY CT LAKESIDE CA 92040	GINA L CLANCY 13326 WILLOW RD LAKESIDE CA 92040
MICHAEL BRANDON 12930 WILLOW RD LAKESIDE CA 92040	MORTON CAMERON 2866 FALLBROOK LN SAN DIEGO CA 92117	EDDIE J CLARK 715 COLINAS MIRA EL CAJON CA 92019
THOMAS D&MELYNDA M BRANT 1563 VISTA SIERRA DR EL CAJON CA 92019	SALVADOR R CAMPOS & CARVER-CAMPOS 10530 PRINCESS JOANN RD SANTEE CA 92071	FRANK COMINETTI 4273 MOUNT VOSS DR SAN DIEGO CA 92117
RYAN K & ALICIA M BRAUN 13951 AVENIDA DEL CHARRO EL CAJON CA 92021	BRIAN D CANTARINI 10934 EASTHAVEN CT SANTEE CA 92071	MICHAEL COMPTON 3168 WACHE DR SPRING VALLEY CA 91978
REBECCA L BRAY 8603 CORDIAL RD EL CAJON CA 92021	MICHAEL K & KATHRYN D CANTY 10904 EASTHAVEN CT SANTEE CA 92071	GUS G & JOANN CONNELLY 2886 WINDWOOD WAY EL CAJON CA 92019
THOMAS E & KATHLEEN A BRISKEY 12161 PAGOSA LN LAKESIDE CA 92040	GEORGE C CAPRALIS 1090 PROSPECT PL VISTA CA 92083	WILLIAM J & ANDREA CONNOLLY 10260 EASTHAVEN DR SANTEE CA 92071
JESSE & KRISTY D BROMBERG 13838 CHERYL CREEK DR EL CAJON CA 92021	PATRICK J&ERLINDA M CARLIN 10976 FILLBROOK DR LAKESIDE CA 92040	FOSS E & ESTHER CORLEY 1201 BUTTONWOOD CT EL CAJON CA 92019
EDGAR BROVICK PO BOX 180980 CORONADO CA 92178	STEPHANIE CARLTON 10815 BROKEN WHEEL RD LAKESIDE CA 92040	RICHARD D & TRACY D CORONA 3504 CAROWAY CT EL CAJON CA 92019
GREGORY M SR BROWN 3511 CAMINO DEL RIO S #408 SAN DIEGO CA 92108	HELEN E CARPENTER 11121 MORENO AVE LAKESIDE CA 92040	SALLY M CORRIGAN 2533 SINGING VISTA WAY EL CAJON CA 92019
DAVID T BRYAN 10221 EASTHAVEN DR SANTEE CA 92071	MARY A CARSON 1237 BUTTONWOOD CT EL CAJON CA 92019	CARMEN CORTES 10840 VALLE VISTA RD LAKESIDE CA 92040
EDWARD M&CAROL BRZEZINSKI 10101 QUAIL CANYON RD EL CAJON CA 92021	ROBIN L CARSON 10743 STRATHMORE DR SANTEE CA 92071	BYANT P R & EDEN M COSBY 13942 SHALYN DR EL CAJON CA 92021
MAX A BUCHMANN 11106 MORENO AVE LAKESIDE CA 92040	MICHELLE M CARTER 13801 PINKARD WAY #6 EL CAJON CA 92021	MARTHA E COSIO 1130 N POINSETTIA PL LOS ANGELES CA 90046
GEDIMIN B&CHERYL L BULAT 11074 FILLBROOK DR LAKESIDE CA 92040	MARGARET M CASSANDRA 2424 EILEEN DR SAN DIEGO CA 92123	NICK L&MARY M COWELL 12033 SERENA RD LAKESIDE CA 92040
RANDY BURCH 10828 SIMA CT SANTEE CA 92071	JOHN W CAUDILL 9133 RONDA AVE SAN DIEGO CA 92123	KELLY J&PATRICIA A COYNE 3125 JAMACHA VIEW DR EL CAJON CA 92019

Miguel-Mission 230 kV #2 Project
SCOPING REPORT APPENDIX A-2. NOP MAILING LIST

SCOTT T&ELANA L CRAIG 10849 STONEY CREEK CT SANTEE CA 92071	DAYMIA FAIZ & EIMAN DAYMIA 3011 JAMACHA VIEW DR EL CAJON CA 92019	JAMES E & SUZANNE L DUNWOODY 2434 MOONSTONE DR SAN DIEGO CA 92123
ROBERT P II&GAIL D CRAWFORD 10857 OAK CREEK DR LAKESIDE CA 92040	CLIFFORD L & BRANDY K DEETS 5721 AVENIDA SANCHEZ SAN DIEGO CA 92124	DIANE G DURANT 12570 OLD CAMPO RD SPRING VALLEY CA 91978
KARL K & DEBORAH L CROFT 13744 CHOISSER LN LAKESIDE CA 92040	DAN & SUSAN DELEON 2661 PINE GLEN CT EL CAJON CA 92019	TOM EASTGATE 13726 CHOISSER LN LAKESIDE CA 92040
DIANE G CROMWELL 13664 WILLOW RD LAKESIDE CA 92040	ANTHONY D&KIMBERLY R DELIA 10928 SERENA LN LAKESIDE CA 92040	KENNETH G EATON 13465 CAMINO CANADA #106 PMB 502 EL CAJON CA 92021
LAWRENCE H CROUCH 2738 WILLOW GLEN DR EL CAJON CA 92019	JIMMY L DENTON 2412 MELBOURNE DR SAN DIEGO CA 92123	KENNETH R & DEBRA L EATON 13850 JACK OAK LN LAKESIDE CA 92040
JOSE L & MARTHA CUELLAR 14020 RANCHO DEL VILLA LAKESIDE CA 92040	MATTHEW & IRENE DEPHILIPPIS 10137 SIR LANCELOT DR SANTEE CA 92071	JAMES W & MARTA S EBRIGHT 14030 CHERYL LEE CT LAKESIDE CA 92040
ROBERT F & MARGARET V CULLINAN 530 CALLE DE LA SIERRA EL CAJON CA 92019	ROBERT & SARA K DIAZ 10840 SIMA CT SANTEE CA 92071	JOHN A&LINDA M EGBERT 10841 SIMA CT SANTEE CA 92071
ROBERT F&CHRISTINA L CUNNINGHAM 12131 SERENA RD LAKESIDE CA 92040	SHANNON DIPARI 10506 PRINCESS JOANN RD SANTEE CA 92071	ROBERT EGGER JR 538 CALLE DE LA SIERRA EL CAJON CA 92019
BAHJET&ZOHORA DABISH 1566 VISTA SIERRA DR EL CAJON CA 92019	GINNEY DJEDDAH 2492 COLINAS PASEO EL CAJON CA 92019	THOMAS D&JANE E TRS ELLERY 13530 WILLOW RD LAKESIDE CA 92040
STEPHEN J JR DAKIS 13720 CHOISSER LN LAKESIDE CA 92040	ELAINE J DLOUHY 4677 RUEDA DR SAN DIEGO CA 92124	LEROY J. ELLIOTT PO BOX 1302 BOULEVARD CA 91905
DHANSUKH A & MADHURI D DALAL 9449 GOODWICK CT SAN DIEGO CA 92123	GLEN A L DODD PO BOX 230760 LAS VEGAS NV 89123	CARMEN ELLIS 2991 PLAZA LEONARDO BONITA CA 91902
DOURAY DALLO 3133 JAMACHA VIEW DR EL CAJON CA 92019	ROBERT M & VARNUM PATRICIA DODSON 3196 JAMACHA VIEW DR EL CAJON CA 92019	LYNN ENDICOTT 12111 SERENA RD LAKESIDE CA 92040
ALICE A DAMON 8406 GOLDEN RIDGE RD LAKESIDE CA 92040	STANLEY P & LAURIE J DOTTS 2550 WILLOW GLEN DR EL CAJON CA 92019	NEVA I ENGLANDER 651 SINGING VISTA DR EL CAJON CA 92019
ANMAR S & BIBO MAHA W DAOUD 536 EMERALD AVE EL CAJON CA 92020	JOHN J & FLORENCE B DOUGHERTY 2540 VISTA RODEO DR EL CAJON CA 92019	BRIAN & KATHLEEN EVANS 13753 CHOISSER LN LAKESIDE CA 92040
RALPH & JACKIE DARLING 13838 JACK OAK LN LAKESIDE CA 92040	BRYAN D & CHERIE L DOUMA 3012 COTTONWOOD VIEW DR EL CAJON CA 92019	GEORGE A EYER 3109 JAMACHA VIEW DR EL CAJON CA 92019
GREGORY P & RYOKO Y DAUNORAS 2552 WIND RIVER RD EL CAJON CA 92019	PAUL & JENNIFER DUBLER 12628 WILLOW RD LAKESIDE CA 92040	FRED & MERRY C FALDUTI 2851 WINDWOOD WAY EL CAJON CA 92019
MICHAEL G & URSINI DAVIS JU 2495 CAMINO MONTE SOMBRA EL CAJON CA 92019	TODD A & PATRICIA A DUBLER 13824 DEANLY CT LAKESIDE CA 92040	BERYL J FARMER 9010 RONDA AVE SAN DIEGO CA 92123
CLEO L DAWSON 14696 RANCH TRAIL DR EL CAJON CA 92021	JOSEPH M & SHERRIE L DUBREUIL 14022 RANCHO DEL VILLA LAKESIDE CA 92040	DANNY L & HEIDE E FARST 14096 HAWICK DR EL CAJON CA 92021
DAVID L SR DAWSON 8130 LA MESA BLVD #304 LA MESA CA 91941	JEAN E DUHAMEL 2422 MELBOURNE DR SAN DIEGO CA 92123	PETER F & LORI A FAUBEL 14086 HAWICK DR EL CAJON CA 92021
DAVID L DAWSON SR 8130 LA MESA BLVD #304 LA MESA CA 91941	PAUL A & LILLIAN M DUNHAM 11129 HIGHWAY 67 LAKESIDE CA 92040	ROBERT G & SANDRA E FAULKNER 4547 RUEDA DR SAN DIEGO CA 92124

Miguel-Mission 230 kV #2 Project
SCOPING REPORT APPENDIX A-2. NOP MAILING LIST

JAMES L FAZIO
3181 JAMACHA VIEW DR
EL CAJON CA 92019

JOYCE FELDER
9040 RONDA AVE
SAN DIEGO CA 92123

RANDY P&LAURA M FELTEN
10995 CABO CT
SANTEE CA 92071

GARY D&PATRICIA A FERALDO
3535 CAROWAY CT
EL CAJON CA 92019

RAY FERGUSON
2502 PINE GLEN LN
EL CAJON CA 92019

MANUEL&SAVARY VERONIQ FERNANDES
11105 HIGHWAY 67
LAKESIDE CA 92040

DANIEL & JONI FERREIRA
595 CALLE DE LA SIERRA
EL CAJON CA 92019

LORETTA FINK
2425 BARTEL ST
SAN DIEGO CA 92123

JOSEPH A FINN
10809 OAK CREEK DR
LAKESIDE CA 92040

JOSEPH A & JOAN K FINN
10809 OAK CREEK DR
LAKESIDE CA 92040

JON M FISHER
12119 SERENA RD
LAKESIDE CA 92040

PAUL R & KAREN R FLECK
10751 STRATHMORE DR
SANTEE CA 92071

JOSEPH E III & GINA FLORENTINO
13873 JACK OAK LN
LAKESIDE CA 92040

LARRY W JR FLOYD
PO BOX 13202
EL CAJON CA 92022

ANTHONY & SHERRY FOGGIO
10831 STONEY CREEK CT
SANTEE CA 92071

ANTHONY & SHERRY FOGGIO
2548 BRUST CT
EL CAJON CA 92019

GARY S&LISA A FORD
13670 WILLOW RD
LAKESIDE CA 92040

DON R FORSSTROM
4495 N FLOYD AVE
FRESNO CA 93722

RICHARD G FOWLER
356 MOREHOUSE PL
CHULA VISTA CA 91911

KATHRYN M FOX
10901 EASTHAVEN CT
SANTEE CA 92071

STEVEN FRAKES
10935 EASTHAVEN CT
SANTEE CA 92071

DAVID S & KRISTIN L FRANCIS
12120 PAGOSA LN
LAKESIDE CA 92040

CHERYL FREEMAN
9125 RONDA AVE
SAN DIEGO CA 92123

ROBERT FREMLAND
2505 RAYMELL DR
SAN DIEGO CA 92123

GORDON S&LINDA L FRIEZE
10848 BROKEN WHEEL RD
LAKESIDE CA 92040

TERRI FROWISS
1301 PEPPER DR
EL CAJON CA 92021

LETEMI V&MILDA J FUIMAONO
9021 RONDA AVE
SAN DIEGO CA 92123

JAMES E & TRUDY L FULLER
2514 SINGING VISTA WAY
EL CAJON CA 92019

RICHARD W & LINDA A FULLER
2402 WIND RIVER RD
EL CAJON CA 92019

ROBERT L & ELIZABETH L FUSCO
2726 WILLOW GLEN DR
EL CAJON CA 92019

PETER J & MICHELE D GAETA
13967 SHALYN DR
EL CAJON CA 92021

STEVEN J GALEA
10685 OAK CREEK DR
LAKESIDE CA 92040

MICHAEL & RENEHAN VIRGINIA GALL
4761 SEDA DR
SAN DIEGO CA 92124

FERNANDO F GALLARDO
8531 CORDIAL RD
EL CAJON CA 92021

MARVIN&VICKI GANDY
10164 SIR LANCELOT DR
SANTEE CA 92071

ERNEST & SHIRLEY M GARCIA
2540 WIND RIVER RD
EL CAJON CA 92019

STEVE D & SUHAILA Y GARMO
3020 JAMACHA VIEW DR
EL CAJON CA 92019

JOSEPH E&KELLY L GAROFALO
10975 EASTHAVEN CT
SANTEE CA 92071

CHRISTOPHER&KRISTIN M GARVIN
10965 EASTHAVEN CT
SANTEE CA 92071

LUIS A & REYNOLDS-GARZA, ANN GARZA
3006 COTTONWOOD VIEW DR
EL CAJON CA 92019

CHRISTOPHER J GASZAK
12135 SERENA RD
LAKESIDE CA 92040

PETER GAUGHEN
10976 CABO CT
SANTEE CA 92071

KENNETH J&MERLE GAUTEREAUX
1249 BUTTONWOOD CT
EL CAJON CA 92019

REUBEN S&HOLLIS GAWARA
10921 EASTHAVEN CT
SANTEE CA 92071

JAMES J & BRENDA J GAY
4047 RISA CT
SAN DIEGO CA 92124

RANDALL S & SHARON R GEELS
650 SINGING VISTA DR
EL CAJON CA 92019

PHILLIP C GENET
9346 TIFFANY PARK PL
EL CAJON CA 92021

JAMES A & BERJOURI M GHAZIL
3028 JAMACHA VIEW DR
EL CAJON CA 92019

JOSIAH H & LINDA GIBSON
11857 SERENA RD
LAKESIDE CA 92040

JOSIAH R JR & LINDA L GIBSON
11857 SERENA RD
LAKESIDE CA 92040

MICHAEL D & ELAINE S GIBSON
2451 CAMINO MONTE SOMBRA
EL CAJON CA 92019

KENNETH E & SHIRLEY A GILMER
9500 HARRITT RD #3
LAKESIDE CA 92040

CATHERINE A GIN
2460 EILEEN DR
SAN DIEGO CA 92123

LINNEA R GOLDBERG
1835 ELAN LN
EL CAJON CA 92019

WALLACE E GOLDIE
2846 WILLOW GLEN RD
EL CAJON CA 92019

DONALD J GOLDKLANG
3125 LINDO ST
LOS ANGELES CA 90068

HAZIM P & MOUNA GORGES
2588 VISTA RODEO DR
EL CAJON CA 92019

ERIC B & GABRIELLE J GOTHAM
2269 RUNABOUT PL
EL CAJON CA 92019

BRIAN&DENISE GRABER
10881 EASTHAVEN CT
SANTEE CA 92071

GERALD T & JODY J GRANGER
2340 WIND RIVER RD
EL CAJON CA 92019

Miguel-Mission 230 kV #2 Project
SCOPING REPORT APPENDIX A-2. NOP MAILING LIST

BRIAN M&VICTORIA GRANT
10895 PRINCE VALIANT DR
SANTEE CA 92071

MICHAEL P&MARY B GREEN
10176 SIR LANCELOT DR
SANTEE CA 92071

JOSEPH L & JOAN A GREENO
10811 VIA CASCABEL
SAN DIEGO CA 92124

DANIEL L & JENNIFER D GRUBBS
8460 HAWICK TER
EL CAJON CA 92021

AMIR HABIB
3097 JAMACHA VIEW DR
EL CAJON CA 92019

STEVEN M & DONNA J HACKNEY
2418 WIND RIVER RD
EL CAJON CA 92019

JANE M HAFFEMAN
13995 EL MONTE RD
LAKESIDE CA 92040

GERALD V&MARY T HAGER
10092 SIR LANCELOT DR
SANTEE CA 92071

WILLIAM E & LAURA M HAJJ
1011 VISTA MADERA LN
EL CAJON CA 92019

OSCAR C HALL
9002 GAUCHO LN
EL CAJON CA 92021

PETER C & MARGARET K HALLORAN
14093 HAWICK DR
EL CAJON CA 92021

LEO & MARIE HAMEL
11103 MORENO AVE
LAKESIDE CA 92040

LEO&MARIE HAMEL
11103 MORENO AVE
LAKESIDE CA 92040

DENNIS L&ELISSA A HAMILTON
10824 VISTA CAMINO
LAKESIDE CA 92040

PATRICIA O HAMLET
11344 WILDCAT CANYON RD
LAKESIDE CA 92040

JAMES&JANE HANCE
10812 BROKEN WHEEL RD
LAKESIDE CA 92040

MARK W&LINDA L HANDY
11138 PINEHURST DR
LAKESIDE CA 92040

RAMZI&KAROLEN HANNA
3027 JAMACHA VIEW DR
EL CAJON CA 92019

ZAC III & PATRICIA R HANSCOM
2846 STEELE CANYON RD
EL CAJON CA 92019

RANDALL J & DONNA K HARAGAN
11435 PALABRA CIR
SAN DIEGO CA 92124

BRIAN C & TAMMY J HARMAN
8715 CORDIAL RD
EL CAJON CA 92021

MARTIN J HARRINGTON
10914 EASTHAVEN CT
SANTEE CA 92071

PAULINE HARRINGTON
9381 BROADVIEW AVE
SAN DIEGO CA 92123

RICHARD L & ROBYN L HARTIG
10174 PRINCE CHARMING LN
SANTEE CA 92071

SAMUEL W II & VIKKI R HARVEY
1840 ELAN LN
EL CAJON CA 92019

CHARLOTTE S HASSON
2420 MOONSTONE DR
SAN DIEGO CA 92123

DAVID A & CARI M HATFIELD
3005 COTTONWOOD VIEW DR
EL CAJON CA 92019

CHARLES E & PENELOPE A HAUER
2748 WILLOW GLEN DR
EL CAJON CA 92019

WILLIAM T&SALLY J HAWES
11345 FREDCURT LN
LAKESIDE CA 92040

BRADLEY R & CINDY K HAWLEY
2277 RUNABOUT PL
EL CAJON CA 92019

STEVEN M&ANDREA L HAYES
10836 BROKEN WHEEL RD
LAKESIDE CA 92040

DANIEL B & CORINA L HEERDINK
9473 PODELL AVE
SAN DIEGO CA 92123

PAUL HELLMAN
3105 JAMACHA VIEW DR
EL CAJON CA 92019

HADIR HELO
3014 PUTTER CT
EL CAJON CA 92019

HELEN R HENDRICKS
2450 DEHESA RD
EL CAJON CA 92019

MICHAEL HENNESS
10911 EASTHAVEN CT
SANTEE CA 92071

HELEN K HENRY
2526 SINGING VISTA WAY
EL CAJON CA 92019

ALAN L&JOY C HERMANSEN
10945 CABO CT
SANTEE CA 92071

FAROOQ A & MARGARET H HERMIZ
2448 WIND RIVER RD
EL CAJON CA 92019

VICTOR S&DAWN L HERNANDEZ
10089 SIR LANCELOT DR
SANTEE CA 92071

LEWIS G HERRMANN
24012 CANVASBACK CIRCLE
LAGUNA NIGUEL CA 92677

LEWIS G HERRMANN
24012 CANVASBACK CIR
LAGUNA NIGUEL CA 92677

RUSSELL A & MARLA J HERVEY
13913 CREEK DR
EL CAJON CA 92021

MILDRED F HICKINGBOTTOM
9051 RONDA AVE
SAN DIEGO CA 92123

FRANCISCA V HIDALGO
9314 TIFFANY PARK PL
EL CAJON CA 92021

CHRISTOPHER R & MELISSA A HINSHAW
14022 CHERYL LEE CT
LAKESIDE CA 92040

WALLACE & CYNTHIA HIRSCH
4775 SEDA DR
SAN DIEGO CA 92124

THOMAS L & ARLEEN D HITCHCOCK
11498 VIA PROMESA
SAN DIEGO CA 92124

STEVEN K HOEFER
4751 SEDA DR
SAN DIEGO CA 92124

JOAN B HOFFMAN
2430 EUCLID AVE
EL CAJON CA 92019

DENNIS & LISA M HOLBA
10734 STRATHMORE DR
SANTEE CA 92071

RONNIE L&TERESA A HOLDERBY
14336 OLDE HIGHWAY 80
EL CAJON CA 92021

TEVEL JR & LOGAN BARBARA HOLEMAN
2517 PINE GLEN LN
EL CAJON CA 92019

TERRY B&MARILYN E HOLUM
1812 LOLA LN
EL CAJON CA 92019

PERRY L HOM
4755 SEDA DR
SAN DIEGO CA 92124

ABLAHAD&OMID HOMMY
2503 PINE GLEN LN
EL CAJON CA 92019

KARL J HOPPER
11044 FILLBROOK DR
LAKESIDE CA 92040

R C HORNING
2456 MONETTE DR
SAN DIEGO CA 92123

EDWARD C & CAROL HORTON
3971 CATAMARCA DR
SAN DIEGO CA 92124

HOSTETTER JON C JR
9363 RANCHO DEL CORTE
LAKESIDE CA 92040

Miguel-Mission 230 kV #2 Project
SCOPING REPORT APPENDIX A-2. NOP MAILING LIST

BRENT A & ANDREA B HOWARD
4024 RISA CT
SAN DIEGO CA 92124

DOUGLAS & MICHELE R HOWARTH
2478 WIND RIVER RD
EL CAJON CA 92019

DORIS M HOWSER
3941 HATTON ST
SAN DIEGO CA 92111

HARRY L & CAROL L HUDSON
2507 SINGING VISTA WAY
EL CAJON CA 92019

TOM HUFFMAN
8100 LA MESA RD., SUITE 150
LA MESA CA 91941

RONALD M HUMPHRIES
10785 OAK CREEK DR
LAKESIDE CA 92040

MARK D & MONICA A HUNTER
614 SINGING VISTA CT
EL CAJON CA 92019

MARY E HUNTER
3110 SWEETWATER RD
LEMON GROVE CA 91945

MARY E TR HUNTER
3110 SWEETWATER RD
LEMON GROVE CA 91945

JEANIE P HUPPERT
9445 GOODWICK CT
SAN DIEGO CA 92123

JIMMY R HURST
11070 MORENO AVE
LAKESIDE CA 92040

RANDY E&LINDA J HURST
10985 CABO CT
SANTEE CA 92071

BRIAN A & CRISTAN M HUTTO
14088 HAWICK DR
EL CAJON CA 92021

DAVID W IFRID
13873 CHERYL CREEK DR
EL CAJON CA 92021

JEAN C IMMENSCHUH
3261 IVANHOE RANCH RD
EL CAJON CA 92019

JOHN T INSALACO
9041 RONDA AVE
SAN DIEGO CA 92123

SCOTT M & MARY M IWANOWSKI
14091 HAWICK DR
EL CAJON CA 92021

JOHN B & MARCELLA J JAMES
PO BOX 20287
EL CAJON CA 92021

SALWAN S JARBO
2820 OLD CALIFORNIA WAY
EL CAJON CA 92019

STEVEN L JEFFREYS
10113 SIR LANCELOT DR
SANTEE CA 92071

MIKEL D&LYNDA JERNIGAN
10954 VISTA CAMINO
LAKESIDE CA 92040

JEROME O & ANGELICA G JOAQUIN
2420 MAMMOTH DR
SAN DIEGO CA 92123

BRAD & KATIE JOHNSON
12483 CAMPO RD
SPRING VALLEY CA 91978

DAVID W & KIMBERLY J JOHNSON
14060 RANCHO DEL VILLA
LAKESIDE CA 92040

JAMES T & KELLE L JOHNSON
10090 PRINCE CHARMING LN
SANTEE CA 92071

JEREMY M & MELISSA JOHNSON
8537 CORDIAL RD
EL CAJON CA 92021

JESSE D & WYNEMA S JOHNSON
727 SINGING VISTA DR
EL CAJON CA 92019

KENNETH W JOHNSON
77 MCCANDLESS DR
EAST BERLIN PA 17316

KEVIN & TAMMY JOHNSON
13897 JACK OAK LN
LAKESIDE CA 92040

LAWRENCE EDWARD JOHNSON
10801 VALLE VISTA RD
LAKESIDE CA 92040

LELAND R&DORIS M JOHNSON
11115 MORENO AVE
LAKESIDE CA 92040

RICHARD G JOHNSON
566 GOULBURN CT
EL CAJON CA 92020

RICHARD L & MELODEE J JOHNSON
15733 CREEK HILLS RD
EL CAJON CA 92021

EARNEST LEE & ELENA D JONES
2408 MONETTE DR
SAN DIEGO CA 92123

JAMES D&GAIL E JONES
10931 VALLE VISTA RD
LAKESIDE CA 92040

RORY L & RUTH G JONES
2460 WIND RIVER RD
EL CAJON CA 92019

MITCHELL A JOPLIN
2544 SINGING VISTA WAY
EL CAJON CA 92019

ROBERT R & DONA R JORDAN
1261 BUTTONWOOD CT
EL CAJON CA 92019

ROBERT D & DOROTHY L JOSLIN
2415 MOONSTONE DR
SAN DIEGO CA 92123

THOMAS E & MAUREEN L JUDISH
3004 LASVEN CT
EL CAJON CA 92019

LAWRENCE S JULIHN
5004 COLUMBIA RD
ANNANDALE VA 22003

ROGER N & DIANA M JUNGE
1095 SINGING RIDGE RD
EL CAJON CA 92019

STEPHEN & LINDA K JURHS
2332 WIND RIVER RD
EL CAJON CA 92019

NAJIB&SHAKRIA KASED
2005 VISTA HERMOSA WAY
EL CAJON CA 92019

NABIL KASKORKIS
1592 VISTA SIERRA DR
EL CAJON CA 92019

MICHAEL A & MARY B J KASTAN
3001 PALM VISTA CT
EL CAJON CA 92019

MICHAEL & ANDREA KAUFFMAN
10206 EASTHAVEN DR
SANTEE CA 92071

PAUL T & ODETT S KAUFMAN
10881 PRINCE VALIANT DR
SANTEE CA 92071

ALAN KAUPPE
10173 SIR LANCELOT DR
SANTEE CA 92071

CHARLES H & LINDA L KEE
7821 LINDA VISTA RD #28
SAN DIEGO CA 92111

ARCHIE T & JEAN C KELLEMS
1941 TRESEDER CIR
EL CAJON CA 92019

CHRIS KELLER
VIEW POINT WEST
PO BOX 1152
MONTROSE CO 81402

ALAN D & KIMBERLY KELLEY
9345 TIFFANY PARK PL
EL CAJON CA 92021

JOHN E & DEBORAH L KELLEY
10809 BROKEN WHEEL RD
LAKESIDE CA 92040

CHARLES H & SARA F KELLY
2519 RAYMELL DR
SAN DIEGO CA 92123

THOMAS J & ANN E KELLY
3043 JAMACHA VIEW DR
EL CAJON CA 92019

ROBERT & STELLA KERRIGAN
8452 HAWICK TER
EL CAJON CA 92021

PHILIP W & MARY A KESSLER
PO BOX 215
SPRING VALLEY CA 91976

FARID J & ITAF B KHOURI
3076 JAMACHA VIEW DR
EL CAJON CA 92019

MATTHEW S & KRISTIE A KIEWLICH
12149 SERENA RD
LAKESIDE CA 92040

Miguel-Mission 230 kV #2 Project
SCOPING REPORT APPENDIX A-2. NOP MAILING LIST

JANET G KIMBALL
9181 RONDA AVE
SAN DIEGO CA 92123

THOMAS K III & VERONICA R KIMMEL
10859 VALLE VISTA RD
LAKESIDE CA 92040

WESLEY J KINDER
1541 SHEFFIELD DR
LA HABRA CA 90631

SHEILA M KING
10845 VALLE VISTA RD
LAKESIDE CA 92040

HARRY R & LINDA J KIRK
2454 WIND RIVER RD
EL CAJON CA 92019

JON A KIRK
10957 SERENA LN
LAKESIDE CA 92040

TONY H & HANA E KIZY
3098 JAMACHA VIEW DR
EL CAJON CA 92019

MARY B KLEIN
11103 HIGHWAY 67
LAKESIDE CA 92040

ROBERT L KLEMKE
9020 RONDA AVE
SAN DIEGO CA 92123

EDWARD J & PAULA R KLOWS
10863 OAK CREEK DR
LAKESIDE CA 92040

TERRY D & MARY A KLUG
10870 BROKEN WHEEL RD
LAKESIDE CA 92040

THOMAS & SHANNON KNAPP
2455 MONETTE DR
SAN DIEGO CA 92123

KAREN D KNEPP
9351 BROADVIEW AVE
SAN DIEGO CA 92123

JOSEPH A & CAROL K KNOTT
6549 DANVILLE CT
SAN DIEGO CA 92120

CRAIG C & KAREN KNUDSEN
3009 COTTONWOOD VIEW DR
EL CAJON CA 92019

STEVEN D & ROBI J KOBLER
13881 JACK OAK LN
LAKESIDE CA 92040

RICHARD L & GENEVIEVE A KOCH
9467 GOODWICK CT
SAN DIEGO CA 92123

EDWARD KOMAKI
1702 PORTERFIELD PL
EL CAJON CA 92019

ROBY & SANDY KONJA
3012 IVANHOE RANCH RD
EL CAJON CA 92019

WISAM T KONJA
2576 VISTA RODEO DR
EL CAJON CA 92019

MICHAEL & JOANNE KOSCIELSKI
529 CALLE DE LA SIERRA
EL CAJON CA 92019

DAVID K & HIROMI KRAMER
10885 EASTHAVEN CT
SANTEE CA 92071

EDWARD & KIMBERLY KRAMER
14011 SHALYN DR
EL CAJON CA 92021

CHARLES J & DORIS M KRAUSE
8543 CORDIAL RD
EL CAJON CA 92021

LAVERN R & LISA A KRUIS
10276 EASTHAVEN DR
SANTEE CA 92071

CHESTER A II & TERRI A KUGLER
10945 EASTHAVEN CT
SANTEE CA 92071

MARGARET A KUMKE
11054 MORENO AVE
LAKESIDE CA 92040

JAMES S & JULANE K KURTZ
14051 RANCHO DEL VILLA
LAKESIDE CA 92040

BRIAN A & BARBARA A LACEY
11233 TIERRASANTA BLVD #16
SAN DIEGO CA 92124

ALAN J&CHRIS R LADD
1592 RICHANDAVE AVE
EL CAJON CA 92019

J SCOTT & JENNIFER M LAGACE
10224 EASTHAVEN DR
SANTEE CA 92071

MARK & MARLA TRUST LAMBERT
10126 PRINCE CHARMING LN
SANTEE CA 92071

RICHARD N & KAREN LANDSTEDT
10952 VISTA CAMINO
LAKESIDE CA 92040

KEVIN P & PATRICIA D LARKO
PO BOX 2563
RAMONA CA 92065

S JOHN LATONA
38190 TIERRA REAL RD
BOULEVARD CA 91905

ROBERT P LAURY
2113 LIME ROCK CT
EL CAJON CA 92019

JACK L & MICHEL D LAVIN
369 VISTA ABIERTA
EL CAJON CA 92019

KRY & ANN LEAP
10853 PRINCE VALIANT DR
SANTEE CA 92071

JIMMY A & SUSAN S LECKRONE
9060 RONDA AVE
SAN DIEGO CA 92123

MYUNG SOOK LEE
10078 PRINCE CHARMING LN
SANTEE CA 92071

ROGER & RENEE LEE
10965 CABO CT
SANTEE CA 92071

FRANK J & SHEILA M LEERS
11488 VIA PROMESA
SAN DIEGO CA 92124

ANNETTE E LEGASPI
2584 SAWGRASS ST
EL CAJON CA 92019

GUNTER & RUTH LEHRER
11032 FILLBROOK DR
LAKESIDE CA 92040

MATTHEW T LEIGH
9071 RONDA AVE
SAN DIEGO CA 92123

JOSEPH R & MARTHA B LEINENBACH FAMILY
9477 GOODWICK CT
SAN DIEGO CA 92123

ROBERT P & EILEEN M LEONARD
2282 RUNABOUT PL
EL CAJON CA 92019

THEODORE V & LETICIA E LESACA
10935 CABO CT
SANTEE CA 92071

JOHN W. LESLIE
600 WEST BROADWAY, SUITE 2600
SAN DIEGO CA 92101-3391

JACOB LEVY
12709 INDIAN TRAIL RD
POWAY CA 92064

JOANN U LEWIS
900 GRANDVIEW DR
EXTON PA 19341

STEVEN E & KERRI R LEWIS
10208 FAIRHILL DR
SPRING VALLEY CA 91977

THOMAS L & KATHLEEN E LEWIS
13886 CHERYL CREEK DR
EL CAJON CA 92021

MATTEO & CARMELA G LICATINI
2488 HILTON HEAD PL #119
EL CAJON CA 92019

BILL & DOLORES LINDSAY
2435 VISTA MADERA WAY
EL CAJON CA 92019

DONALD E JR & JANICE W LINDSLEY
9142 RONDA AVE
SAN DIEGO CA 92123

SAM CHUN-WEI & JUDY YU FAIR LIU
3110 JAMACHA VIEW DR
EL CAJON CA 92019

TOM C T & JOANNE C LIU
3019 JAMACHA VIEW DR
EL CAJON CA 92019

JAMES W & MARILYN C LOISELLE
2466 WIND RIVER RD
EL CAJON CA 92019

JIMMY R & SHERRY L LONG
10958 VISTA CAMINO
LAKESIDE CA 92040

Miguel-Mission 230 kV #2 Project
SCOPING REPORT APPENDIX A-2. NOP MAILING LIST

MICHAEL M & ERLINDA E LONG
10742 STRATHMORE DR
SANTEE CA 92071

JOE JR & MONICA N LONGORIA
13960 AVENIDA DEL CHARRO
EL CAJON CA 92021

S EDWARD & YIM O LOU
12879 RIFE WAY
SAN DIEGO CA 92129

GARY P & MARY C LOWE
10767 VALLE VISTA RD
LAKESIDE CA 92040

PHIL LOWE
ASPEN ENVIRONMENTAL GROUP
426 NO. 44TH STREET #370
PHOENIX AZ 85008

LLOYD T JR & MELISSA L LOWREY
10230 EASTHAVEN DR
SANTEE CA 92071

MICHAEL A & RHONDA R LOWRY
1213 BUTTONWOOD CT
EL CAJON CA 92019

CARMEN LUCAS
PO BOX 44
JULIAN CA 92036

FRANK L & ANNETTE LUCERO
3158 JAMACHA VIEW DR
EL CAJON CA 92019

STEPHEN K LUCK
2638 WIND RIVER RD
EL CAJON CA 92019

BARRY & CYNTHIA LUMLEY
10975 CABO CT
SANTEE CA 92071

JASON & DIANA LYNN
13826 CHERYL CREEK DR
EL CAJON CA 92021

ALFRED E & JOANN E MACIAS
11452 ROCKY LN
LAKESIDE CA 92040

CRAIG C & JACQUELINE K MADSEN
10518 PRINCESS JOANN RD
SANTEE CA 92071

RICHARD & HILLARY MAGARRELL
11219 ROCKY LN
LAKESIDE CA 92040

GUIDO & TRACY L MAGLIATO
13992 CHERYL CREEK DR
EL CAJON CA 92021

CRAIG W & REBECCA E MAILE
8517 CORDIAL RD
EL CAJON CA 92021

LIBOR P & MINERVA F MALIN
3101 JAMACHA VIEW DR
EL CAJON CA 92019

THOMAS P MANNING
PO BOX 549
SPRING VALLEY CA 91976

NASIR H MANSOR
595 DOWNER AVE
EL CAJON CA 92020

ROBERT R & MELODY E MARCHAND
2994 WILDWIND DR
EL CAJON CA 92019

PHILLIP D & CAROL Y MARCHANT
10162 PRINCE CHARMING LN
SANTEE CA 92071

AMPARO C MARIN
3772 FLORENCE ST
SAN DIEGO CA 92113

JOSE A & LUCIA V MARIN
PO BOX 634
LAKESIDE CA 92040

LONNIE W III & REBECCA W MARKS
5523 BIRCHILL RD
CHARLOTTE NC 28227

ROBERT S & MICHELE R MARKS
10102 PRINCE CHARMING LN
SANTEE CA 92071

LATIF & FAIZA MAROGY
3091 JAMACHA VIEW DR
EL CAJON CA 92019

LUAY J & SUMMER K MAROKI
3068 JAMACHA VIEW DR
EL CAJON CA 92019

PHILLIP W & MARALYN MARSH
9465 PINO DR
LAKESIDE CA 92040

SAMUEL J & EDILMA C MARSH
13677 LENTEJA LN
LAKESIDE CA 92040

ROBERT T & EMILY J MARSHALL
14056 RANCHO DEL VILLA
LAKESIDE CA 92040

DON & ROSE M MARTIN
11341 EUCALYPTUS HILLS DR
LAKESIDE CA 92040

MICHAEL R & LYDIA A MARTIN
10152 SIR LANCELOT DR
SANTEE CA 92071

ROBERT & TOMI FAMILY TRUST MARTIN
485 DEER HOLLOW LN
OAKLAND OR 97462

CONRAD P & BARBARA J MARTINEZ
2274 RUNABOUT PL
EL CAJON CA 92019

ROBERT E & PATRICIA A MARTINEZ
13937 CHERYL CREEK DR
EL CAJON CA 92021

JOHN A & LINDA M MARTINICO
3052 LASVEN CT
EL CAJON CA 92019

MONTE D & ANN J MATTSON
2549 VISTA RODEO DR
EL CAJON CA 92019

DAVID S&BARBARA MAYS
1589 VISTA SIERRA DR
EL CAJON CA 92019

THOMAS & PAULETTE M MCALOON
13610 WILLOW RD
LAKESIDE CA 92040

THOMAS J & PAULETTE M MCALOON
11137 MORENO AVE
LAKESIDE CA 92040

PATRICK D JR & OTA-MCCAR MCCARTHY
1850 ELAN LN
EL CAJON CA 92019

ROBERT E MCCOY JR
8732 LAKE ASHMER DR
SAN DIEGO CA 92119

GREGORY J & SUZANNE MCGILVRAY
3022 PUTTER CT
EL CAJON CA 92019

JASON & KARLA MCLACHLAN
5823 MISSION CENTER RD #B
SAN DIEGO CA 92123

DANIEL H & ANN E MCMILLAN
2467 CERRO SERENO
EL CAJON CA 92019

LINDA L MCMORRAN
10382 PASEO PARK DR
LAKESIDE CA 92040

CHARLES W JR & GLORIA MCMULLEN
13975 SHALYN DR
EL CAJON CA 92021

MICHAEL P & KRISTINA D MCMURRAY
9523 PODELL AVE
SAN DIEGO CA 92123

ROB T MCNELIS
10836 STONEY CREEK CT
SANTEE CA 92071

MATT A & MICHELLE MEDINA
9329 TIFFANY PARK PL
EL CAJON CA 92021

MICHAEL A & DEBORAH C MELIUS
3012 JAMACHA VIEW DR
EL CAJON CA 92019

JOHN C TR MELLOSO
2830 WILLOW GLEN DR
EL CAJON CA 92019

VELMA M MELVILLE
180 REA AVE
EL CAJON CA 92020

JASON J MENDONSA
9361 TIFFANY PARK PL
EL CAJON CA 92121

THOMAS G & MARY J MERRITT
13826 JACK OAK LN
LAKESIDE CA 92040

ELLEN J MEWSHAW
728 KENDALL LN
BOULDER CITY NV 89005

SAMSON A & APRIL N MEYER
3190 JAMACHA VIEW DR
EL CAJON CA 92019

KAMAL & HANA MIKHAIL
2670 PINE GLEN CT
EL CAJON CA 92019

PETER J & SANDRA M MIKOLAJEWSKI
2520 SINGING VISTA WAY
EL CAJON CA 92019

Miguel-Mission 230 kV #2 Project
SCOPING REPORT APPENDIX A-2. NOP MAILING LIST

CHERYL S MILANA 2515 SINGING VISTA WAY EL CAJON CA 92019	JOHN & KATHERINE MUELLER 10945 N MAGNOLIA AVE SANTEE CA 92071	DANIEL B & BARBARA J NOWAK 2742 WILLOW GLEN DR EL CAJON CA 92019
GEORGE F & DOROTHY K TRUST MILLER 2466 WILLOW GLEN DR EL CAJON CA 92019	JOHN&KATHERINE MUELLER 10945 N MAGNOLIA AVE SANTEE CA 92071	KIMBERLY A NOWAK 1295 PEARLBUSH CT EL CAJON CA 92019
THOMAS M & LYNN M MITCHELL 2126 RICARD CT EL CAJON CA 92019	MITCHELL H & WOOD SANDRA MUHLEMAN 2673 PINE GLEN CT EL CAJON CA 92019	JOSE NUNEZ 1565 HOTEL CR. SOUTH #310 SAN DIEGO CA 92108
DENNIS MITROVICH 12471 CAMPO RD SPRING VALLEY CA 91978	ROBERT O II & BARBARA MUHLEMAN 10150 PRINCE CHARMING LN SANTEE CA 92071	LEWELLYN J & DEANNA L OAKES 11425 PALABRA CIR SAN DIEGO CA 92124
RICHARD & MARY A MIX 8659 CORDIAL RD EL CAJON CA 92021	ROXANNE E MUNOZ 4513 VIA PALABRA SAN DIEGO CA 92124	MICHAEL S ODEANE 9150 RONDA AVE SAN DIEGO CA 92123
DANIEL V & JOANN M MOCERI 2453 CAMINO MONTE SOMBRA EL CAJON CA 92019	MARK R MURCH 9141 RONDA AVE SAN DIEGO CA 92123	DONNA G OHARE 11425 PALABRA CT SAN DIEGO CA 92124
SAIED MOJABI 11597 CAMINO PLAYA CATALINA SAN DIEGO CA 92124	EDWARD D&PATRICIA M MURPHY 10536 PRINCESS JOANN RD SANTEE CA 92071	ADRIAN OLDHAM 9149 RONDA AVE SAN DIEGO CA 92123
JASON C MOLUS 10880 OAK CREEK DR LAKESIDE CA 92040	CHRISTINA MYER 9173 RONDA AVE SAN DIEGO CA 92123	MYRON L & VALERIE R OLIVER 9363 BROADVIEW AVE SAN DIEGO CA 92123
DARRELL G & SUSAN T MONROE 10149 SIR LANCELOT DR SANTEE CA 92071	KURT R MYERS 11957 SERENA RD LAKESIDE CA 92040	SHANNON K ONEILL 13885 JACK OAK LN LAKESIDE CA 92040
RAOUL P & ROSE M TRS MONTAGUE 9327 BROADVIEW AVE SAN DIEGO CA 92123	MICHAEL S & BRANDI S NAEGELI 9330 TIFFANY PARK PL EL CAJON CA 92021	RONALD & VALERIE ONTELL 4557 RUEDA DR SAN DIEGO CA 92124
JOHN & ESTELLE MONTY 9117 RONDA AVE SAN DIEGO CA 92123	LEONARD & BETTY NASH 9466 DEANLY ST LAKESIDE CA 92040	MAURICE ORANGE 3044 JAMACHA VIEW DR EL CAJON CA 92019
ERNESTO J & PATRICE M MORENO 2532 SINGING VISTA WAY EL CAJON CA 92019	ANTHONY C & LUCINDA J NAVARRE PO BOX 198 LAKESIDE CA 92040	JESSE&ELIZABETH ORTEGA 3117 JAMACHA VIEW DR EL CAJON CA 92019
ISAAC JR & MARIE F MORENO 9102 RONDA AVE SAN DIEGO CA 92123	ANTHONY C & LUCINDA J NAVARRE 875 HWY 98W KOKOMO MS 39643	MARK A & VALERIE A ORTIZ 10944 EASTHAVEN CT SANTEE CA 92071
JEAN F MORGAN 1273 BUTTONWOOD CT EL CAJON CA 92019	EARL A & CYNTHIA NELSON 10927 EASTHAVEN CT SANTEE CA 92071	ROBERT JR & JUDY ORTIZ 9371 BROADVIEW AVE SAN DIEGO CA 92123
MARK MORGAN 10230 PRINCESS JOANN RD SANTEE CA 92071	ROBERT B & LINDA NELSON 2549 PINE GLEN LN EL CAJON CA 92019	STEVE & DENIESE OSSEY 10904 CABO CT SANTEE CA 92071
JEFFREY G MORRISON 10542 PRINCESS JOANN RD SANTEE CA 92071	GERALD D NEWMAN 11145 MORENO AVE #T LAKESIDE CA 92040	ROGER & JULIE OWEN 8643 CORDIAL RD EL CAJON CA 92021
CAMERON MORTON 2866 FALLBROOK LN SAN DIEGO CA 92117	RICHARD W & GWENDOLYN K NICHOLS 11128 PINEHURST DR LAKESIDE CA 92040	JESUS A & CARMEN D PABLO 2433 MELBOURNE DR SAN DIEGO CA 92123
EDWARD S & IRENE A MOSLEY 2470 VISTA MADERA WAY EL CAJON CA 92019	ROBERT L & POLICH LINDA M NOE 4759 SEDA DR SAN DIEGO CA 92124	DANIEL & MICHELLE N PAGNI 13964 CHERYL CREEK DR EL CAJON CA 92021
MARTIN&LIANNE B MOSS 3051 JAMACHA VIEW DR EL CAJON CA 92019	JAN F NORBY 3004 PALM VISTA CT EL CAJON CA 92019	ERNEST&CARTWRIGHT LINDA PALACIO 10927 OAK CREEK DR LAKESIDE CA 92040
RICHARD E & MARY L MOSSAY 2320 WIND RIVER RD EL CAJON CA 92019	FRANCIS J & DEIRDRE NOSTRAND 8611 CORDIAL RD EL CAJON CA 92021	ROGER & DENISE PALTZ 10984 EASTHAVEN CT SANTEE CA 92071

Miguel-Mission 230 kV #2 Project
SCOPING REPORT APPENDIX A-2. NOP MAILING LIST

DONNA M PANTAZIS
657 COLINAS MIRA
EL CAJON CA 92019

BRUCE & MICHELLE PAPPALARDO
10750 STRATHMORE DR
SANTEE CA 92071

LAWRENCE C PARMENTER
9315 BROADVIEW AVE
SAN DIEGO CA 92123

SCOTT & PATR PARMER, BETHEL-PARMER
10125 SIR LANCELOT DR
SANTEE CA 92071

SILVERIO C & JUDY L REVOCA PASCUA
2464 WILLOW GLEN DR
EL CAJON CA 92019

BIPIN & MINA PATEL
3009 PUTTER CT
EL CAJON CA 92019

DONALD S & SANDRA L PATTON
10994 CABO CT
SANTEE CA 92071

HIKMET & BUTRES MANIHEL PAULS
2630 WIND RIVER RD
EL CAJON CA 92019

JEFFREY D & LISA G PAYNE
2492 SINGING TRAILS CT
EL CAJON CA 92019

ROBERTA L PAYNE
2505 CAMINO MONTE SOMBRA
EL CAJON CA 92019

SHERRY B PENIX
2990 WILDWIND DR
EL CAJON CA 92019

LUIS E & DAWN M PEREZ
8456 HAWICK TER
EL CAJON CA 92021

JOHN W & KATHERINE PERGRIN
9490 DEANLY ST
LAKESIDE CA 92040

MICHAEL E & LONNA PERRY
2472 WIND RIVER RD
EL CAJON CA 92019

MALCOLM L JR PERSINGER
2696 PINE GLEN CT
EL CAJON CA 92019

MICHAEL E & LEONE D PERSINGER
2638 PINE GLEN CT
EL CAJON CA 92019

DAVID L & KAREN S PETERSEN
1229 PEARLBUSH CT
EL CAJON CA 92019

RONALD J PETERSEN
11336 VALLE VISTA RD
LAKESIDE CA 92040

THOMAS D & MARY G PETERSEN
9860 ALTO DR
LA MESA CA 91941

JAMES E JR & SAUNDRA A PETERSON
2460 CAMINO MONTE SOMBRA
EL CAJON CA 92019

THOMAS D & MARY G PETERSON
9860 ALTO DR
LA MESA CA 91941

ANTHONY G & LISA A PETRICCA
9405 CHERISSE LN
EL CAJON CA 92021

ANTHONY E & JAMILEE E PETRILLE
11046 MORENO AVE
LAKESIDE CA 92040

STEVEN Q PHAN
13867 JACK OAK LN
LAKESIDE CA 92040

TROY PHELPS
14055 RANCHO DEL VILLA
LAKESIDE CA 92040

ALLEN R & KAY P PHILLIPS
9486 GOODWICK CT
SAN DIEGO CA 92123

W DUANE & EMBERY PILLSBURY
13036 WILLOW RD
LAKESIDE CA 92040

KEVIN D & JILL Y PINCIOTTI
11127 MORENO AVE
LAKESIDE CA 92040

KEVIN D & JILL Y PINCIOTTI
11127 MORENO AVE
LAKESIDE CA 92040

ANDRE & ALMA L PITCHFORD
8787 GOLDEN RIDGE RD
LAKESIDE CA 92040

ROBERT L PITT
10839 PRINCE VALIANT DR
SANTEE CA 92071

RICHARD B & CHERYL J PLUM
9307 RANCHO DEL CORTE
LAKESIDE CA 92040

LEON J & LYNDA L PODWOSKI
9380 LAKE JENNINGS PARK RD
LAKESIDE CA 92040

GREGORY G & DEBRA L POMRENKE
1277 BITTERBUSH LN
EL CAJON CA 92019

ROBERT J PONNWITZ
3036 JAMACHA VIEW DR
EL CAJON CA 92019

LEONARD & WILMA J PORTELL
9358 LAKE JENNINGS PARK RD
LAKESIDE CA 92040

GABE W TR POTTER
10811 BROKEN WHEEL RD
LAKESIDE CA 92040

MICHAEL POWERS
13908 CHERYL CREEK DR
EL CAJON CA 92021

DENNIS & SHERRIE PRESFIELD
3453 UNIVERSITY AVE
SAN DIEGO CA 92104

ALLEN F & KIMBERLY D PRICE
8701 CORDIAL RD
EL CAJON CA 92021

JASON C & DESIREE L PRICE
14010 SHALYN DR
EL CAJON CA 92021

BRUCE E & CAROLYN S PROUSE
1277 PEARLBUSH CT
EL CAJON CA 92019

DALE W & ELLEN J REVOCABLE PRUITT
2997 WILDWIND DR
EL CAJON CA 92019

WILLARD L & DIANA L PUGH
10140 SIR LANCELOT DR
SANTEE CA 92071

HAITHAM & SANA J PUTRUS
2546 WIND RIVER RD
EL CAJON CA 92019

MAZIN & SUNDUS PUTRUS
2564 VISTA RODEO DR
EL CAJON CA 92019

SUSAN D PYEATT
14059 HAWICK DR
EL CAJON CA 92021

DAVID G & LILIANE PYLE
10077 SIR LANCELOT DR
SANTEE CA 92071

DAVID L & GAIL M QUASCHNICK
10128 SIR LANCELOT DR
SANTEE CA 92071

BURTON R JR & MARSHA T QUICK
11348 FREDCURT LN
LAKESIDE CA 92040

HELEN P & GE QUILLIN
10939 SUMMIT AVE
SANTEE CA 92071

ALLEN K & LEONA K RACHEL
10285 VIACHA DR
SAN DIEGO CA 92124

JAMES A & JACQUELIN J RADICE
2530 WIND RIVER RD
EL CAJON CA 92019

BASIL & RITA RAFFO
2135 GREENWICK RD
EL CAJON CA 92019

WILLIAM & SOUAD RAFOU
2552 VISTA RODEO DR
EL CAJON CA 92019

HAMID RASTEGAR
ASPEN ENVIRONMENTAL GROUP
30423 CANWOOD ST., SUITE 215
AGOURA HILLS CA 91301

FRANCISCO & HAYDEE RAMIREZ
13922 CHERYL CREEK DR
EL CAJON CA 92021

GERALD A RAMSEY
1805 ELAN LN
EL CAJON CA 92019

TERRY A & AMANDA J RANKHORN
10986 CABO CT
SANTEE CA 92071

DONALD E & NANCY J RAVY
13862 CHERYL CREEK DR
EL CAJON CA 92021

Miguel-Mission 230 kV #2 Project
SCOPING REPORT APPENDIX A-2. NOP MAILING LIST

ROBERT E & BRIGET M RAYMOND
2517 CAMINO MONTE SOMBRA
EL CAJON CA 92019

KENDALL D REAGAN
13872 JACK OAK LN
LAKESIDE CA 92040

DAWN P REED
10256 EASTHAVEN DR
SANTEE CA 92071

MARK W & KATHLEEN A H REGN
4510 VIA PALABRA
SAN DIEGO CA 92124

ROBERT L & MARY J REVOCA REILLING
2685 PINE GLEN CT
EL CAJON CA 92019

PETER J & NONA M REINAGEL
9548 PODELL AVE
SAN DIEGO CA 92123

THERESE S RENDT
23609 SCARBERY WAY
RAMONA CA 92065

JOHN W & MARCELLA K RICE
10298 VISTA CAMINO
LAKESIDE CA 92040

JOHN W & MARCELLA K RICE
10928 VISTA CAMINO
LAKESIDE CA 92040

GLENN S & JUDITH A RICH
13961 CHERYL CREEK DR
EL CAJON CA 92021

DAVID G & BUNNY S RICHESON
10268 EASTHAVEN DR
SANTEE CA 92071

MARJORIE M RIDING
11123 MORENO AVE
LAKESIDE CA 92040

TERRENCE J RIZZO
PO BOX 420353
SAN DIEGO CA 92124

DAVID & SWANEGAN-ROBINSON ROBINSON
3032 IVANHOE RANCH RD
EL CAJON CA 92019

RICHARD D & CINDY L ROBINSON
4224 RUEDA DR
SAN DIEGO CA 92124

MICHAEL H RODDY
4667 RUEDA DR
SAN DIEGO CA 92124

JIMMY D & BARBARA A ROGERS
13230 WILLOW RD
LAKESIDE CA 92040

ZONNA M ROGERS
3011 LASVEN CT
EL CAJON CA 92019

ROBERT L ROSEGAY
11415 PALABRA CIR
SAN DIEGO CA 92124

ROBERT D & MARY A ROSENBLUM
9483 PODELL AVE
SAN DIEGO CA 92123

TAMMY A ROWE
11008 FILLBROOK DR
LAKESIDE CA 92040

DENISE L RUBIN
3271 STAR ACRES DR
SPRING VALLEY CA 91978

ROBERT M RUFF
13891 DEANLY ST
LAKESIDE CA 92040

RANDY S RUIS
13966 AVENIDA DEL CHARRO
EL CAJON CA 92021

JOHN J RUSKOWSKY
10943 VALLE VISTA RD
LAKESIDE CA 92040

GINO & MARIA P RUSSO
3102 JAMACHA VIEW DR
EL CAJON CA 92019

IGNAZIO J & MARIA P RUSSO
3118 JAMACHA VIEW DR
EL CAJON CA 92019

RABURN R & GLORIA J RUST
15260 WILLOW RD
LAKESIDE CA 92040

JOHN P & SHELLY B RYAN
8675 CORDIAL RD
EL CAJON CA 92021

FELICIA RYDER
1159 WILBUR AVE
SAN DIEGO CA 92109

JERRY M SABOL
12622 WILLOW RD
LAKESIDE CA 92040

FREDERICK M SAGABIEL
2409 BARTEL ST
SAN DIEGO CA 92123

RICHARD B&PATRICIA A SAGE
10944 SERENA LN
LAKESIDE CA 92040

LAWRENCE R SALUS
3039 LASVEN CT
EL CAJON CA 92019

BARBARA SAMPO
2340 HARCOURT DR
SAN DIEGO CA 92123

FRANK J & JULIE M SANFILIPPO
10575 VIACHA WAY
SAN DIEGO CA 92124

TIMOTHY M & KIYOMI SANKARY
10250 EASTHAVEN DR
SANTEE CA 92071

BERNARD A&MARION R SANTOS
11415 EUCALYPTUS HILLS DR
LAKESIDE CA 92040

CHRISTOPHER M & AMBER SAROT
14063 HAWICK DR
EL CAJON CA 92021

JAMES SATTERLEY & GLORIA J RAST
347 VISTA ABIERTA
EL CAJON CA 92019

JOHN A JR SAUNDERS & MARTIN-SAUND
13959 SHALYN DR
EL CAJON CA 92021

GEORGE SAYATOVICH
8559 CORDIAL RD
EL CAJON CA 92021

WINFORD SAYLORS
8447 WENATCHEE AVE
EL CAJON CA 92021

ROBERT W SCANLON
9306 TIFFANY PARK PL
EL CAJON CA 92021

STEVEN R & KIM M SCHATTINGER
2495 COLINAS PASEO
EL CAJON CA 92019

CAROLYN E SCHEIDEL
PO BOX 1796
LA MESA CA 91944

PAUL SCHEUERMAN
3915 RAWHIDE ROAD
ROCKLIN CA 95677

STEVE J & PAMELA A SCHILLER
9452 AUDUBON RD
LAKESIDE CA 92040

RODNEY E & DOTTIE D SCHILLING
13985 EL MONTE RD
LAKESIDE CA 92040

KERRY A & GAIL M SCHIMPF
1052 SINGING RIDGE RD
EL CAJON CA 92019

ROBERT L & CELIA B SCHLOTTER
14085 HAWICK DR
EL CAJON CA 92021

DONALD R & JAMIE L REVOCA SCHMIDT
15629 HIGHLAND VALLEY RD
ESCONDIDO CA 92025

EDUARD V & BONNIE M SCHMIEGE
4007 RISA CT
SAN DIEGO CA 92124

JAMES R&MICHELLE J SCHMITZ
11961 SERENA RD
LAKESIDE CA 92040

FRANK C & PATRICIA A SCHMITZER
9561 PODELL AVE
SAN DIEGO CA 92123

BRIAN&CHERYL R SCHNEIDER
10819 VALLE VISTA RD
LAKESIDE CA 92040

JEFFREY J & LINDA M SCHRADER
3036 LASVEN CT
EL CAJON CA 92019

DENNIS V & MARY T SCHRAEDER
10836 HALLE VISTA RD
LAKESIDE CA 92040

GREGORY D & MINERVA G SCHWAB
2127 RICARD CT
EL CAJON CA 92019

MARIE S SCHWEITZER
1217 PEARLBUSH CT
EL CAJON CA 92019

Miguel-Mission 230 kV #2 Project
SCOPING REPORT APPENDIX A-2. NOP MAILING LIST

CRAIG H & PATTI M SCOTT 2410 WIND RIVER RD EL CAJON CA 92019	LOREN & VICKI SNYDER 3007 PALM VISTA CT EL CAJON CA 92019	OLIVER A STROBRIDGE 11006 VALLE VISTA RD LAKESIDE CA 92040
MARY SCOTTI 2324 WIND RIVER RD EL CAJON CA 92019	DON L SORENSEN PO BOX 1884 GIG HARBOR WA 98335	JOHN M&WANDA K TRUST STRONGOSKY 3142 JAMACHA VIEW DR EL CAJON CA 92019
PHYLLIS SEDILO 2886 LARKIN PL SAN DIEGO CA 92123	MARGARET SPANOS 357 SHASTA ST MANCHESTER NH 3103	JOSEPH&TERI L STUYVESANT 3189 JAMACHA VIEW DR EL CAJON CA 92019
SHARON L SENN 11056 MORENO AVE LAKESIDE CA 92040	PATRICIA G SPEER 13864 JACK OAK LN LAKESIDE CA 92040	MARK C & CHRISTINA G SULLIVAN 3013 PALM VISTA CT EL CAJON CA 92019
JAVIER&SOFIA G SERRANO 761 E CAMDEN AVE EL CAJON CA 92020	JACK H SPRAGUE 8301 MISSION GORGE RD #239 SANTEE CA 92071	CESAR & NOUHA SUMAR 2506 SINGING VISTA WAY EL CAJON CA 92019
LISA M SETTLECOWSKI 10524 PRINCESS JOANN RD SANTEE CA 92071	KENNETH D & ELIZABETH A ST JOHN 8619 CORDIAL RD EL CAJON CA 92021	SCOTT SWAN 2441 BARTEL ST SAN DIEGO CA 92123
SGAMBELLURI/STEIGERWALDT FAMILY 2486 COLINAS PASEO EL CAJON CA 92019	VIRGINIA M U ST JOHN 10839 VALLE VISTA RD LAKESIDE CA 92040	SWEEDER STANLEY E&JANET V PO BOX 25 LAKESIDE CA 92040
HANI M SHAMOON 3084 JAMACHA VIEW DR EL CAJON CA 92019	LORI STADILLE 2432 VISTA RODEO DR EL CAJON CA 92019	MICHAEL A & DONNA J TACONI 8635 CORDIAL RD EL CAJON CA 92021
DOUGLAS&CHAMANE SHELLSTROM 15201 PRESILLA DR JAMUL CA 91935	YVETTE H STAMPER 3175 SWEETWATER SPRINGS BLVD #2 SPRING VALLEY CA 91978	STEPHEN L & BLAKE JOI L TADLOCK 1810 ELAN LN EL CAJON CA 92019
ASHER SHEPARD 108 ORANGE ST., SUITE 8 REDLANDS CA 92373-4719	CHRIS B & JACQUELINE STAUCH 10264 EASTHAVEN DR SANTEE CA 92071	ROPHAEL & Wafa TALIA 2697 PINE GLEN CT EL CAJON CA 92019
TYRONE M & OLLIE L SHEPHERD 12367 CALLE ALBARA #4 EL CAJON CA 92019	IRENE K STEINLE 2402 EILEEN DR SAN DIEGO CA 92123	DEREK & MONICA TATMAN 13950 CHERYL CREEK DR EL CAJON CA 92021
ANNA SHIMKO CASSIDY SHIMKO & DAWSON 20 CALIFORNIA ST., SUITE 500 SAN FRANCISCO CA 94111-4826	ERIK STEPHAN 10955 CABO CT SANTEE CA 92071	WALTER E & RENATE L TAURIAINEN 11052 FILLBROOK DR LAKESIDE CA 92040
ROBERT JAMES SHOOK 9520 LAKE JENNINGS PARK RD LAKESIDE CA 92040	JAMES W & DEBRA L STEPHENS 2876 OLD CALIFORNIA WAY EL CAJON CA 92019	WALTER E&RENAME L TAURIAINEN 11052 FILLBROOK DR LAKESIDE CA 92040
EUGENE E SICKELS 8503 CORDIAL RD EL CAJON CA 92021	ROBERT F & DENISE STEVENS 13502 WILLOW RD LAKESIDE CA 92040	HARRY E & ESPERANZA L TAYLOR 3006 PUTTER CT EL CAJON CA 92019
EDDIE V SILER 10939 VALLE VISTA RD LAKESIDE CA 92040	THOMAS & JANICE STICHT 2062 VALLEY VIEW BLVD EL CAJON CA 92019	RICHARD E JR & SANDRA S TAYLOR 12159 SERENA RD LAKESIDE CA 92040
NICHOLAS E&KATHLEEN L SILVA 11130 PINEHURST DR LAKESIDE CA 92040	BRANDON & NANCY STOLL 13144 WILLOW RD LAKESIDE CA 92040	DAVID B & DEBORAH J <DVA> TEED 1285 BUTTONWOOD CT EL CAJON CA 92019
ROBERT T & RODNIE G SIMMONS 13732 CHOISSER LN LAKESIDE CA 92040	ROBERT J & GERALDINE M STOLL PO BOX 533 LAKESIDE CA 92040	HAROLD R JR & VELMA J TEEL 9011 RONDA AVE SAN DIEGO CA 92123
RONALD J & CONSTANCE J SINCAVAGE 13859 JACK OAK LN LAKESIDE CA 92040	ROBERT J & GERLADINE M STOLL PO BOX 533 LAKESIDE CA 92040	MARK A & JACKIE L TEJERO 13850 CHERYL CREEK DR EL CAJON CA 92021
CHRISTOPHER P & SUSAN A SLATES 33129 DRILL RD AGUA DULCE CA 91350	NORVEN W & CHERYL STORRS 231 W MAIN ST EL CAJON CA 92020	JEAN M & CAROL L TELLIER 13737 CHOISSER LN LAKESIDE CA 92040
TIMOTHY F&LAURIE J SMITH 10080 SIR LANCELOT DR SANTEE CA 92071	DWIGHT D STREETER 2531 PINE GLEN LN EL CAJON CA 92019	TODD L & CANDACE M TEMPLE 13936 CHERYL CREEK DR EL CAJON CA 92021

Miguel-Mission 230 kV #2 Project
SCOPING REPORT APPENDIX A-2. NOP MAILING LIST

HELEN TEN-EYCK
8667 CORDIAL RD
EL CAJON CA 92021

HOSSOM & WAILIT THEWENY
3002 IVANHOE RANCH RD
EL CAJON CA 92019

RONALD L & DEVERA H THORPE
2536 WIND RIVER RD
EL CAJON CA 92019

JIM THURBER
1533 EAST 4TH STREET
SANTA ANA CA 92701

JULIA B TOMASCIK
9112 RONDA AVE
SAN DIEGO CA 92123

SHAWN D & PATRICIA TORGERSON
13738 CHOISSER LN
LAKESIDE CA 92040

RICHARD E & KATHERINE J TORRENCE
38 MAYFAIR DR
BELLA VISTA AR 72715

WILLIAM & MARIAN TRACHTENBERG
4764 BIONA DR
SAN DIEGO CA 92116

ANDREW THANH TRAN
7710 BALBOA AVE #228E
SAN DIEGO CA 92111

TIMOTHY H & MOLLY M A TREADWELL
2548 SINGING VISTA WAY
EL CAJON CA 92019

LIONEL G & EILEEN E TRUJILLO FAMILY
2436 RIDGEMARK DR
SANTA MARIA CA 93455

C STEWART & JANIE F TULLEDGE
PO BOX 20486
EL CAJON CA 92021

SUSAN M TUTTLE
11367 FREDCURT LN
LAKESIDE CA 92040

CAROL S URIBE
11124 PINEHURST DR
LAKESIDE CA 92040

GLENN R URIE
10891 EASTHAVEN CT
SANTEE CA 92071

NEGAR VAHIDI
ASPEN ENVIRONMENTAL GROUP
30423 CANWOOD ST., SUITE 215
AGOURA HILLS CA 91301

VANESSA G VALENCIA
9305 TIFFANY PARK PL
EL CAJON CA 92021

RICHARD J & JOYCE Y VANDYKE
9457 GOODWICK CT
SAN DIEGO CA 92123

DONALD A VANSICKLE
10252 VIACHA DR
SAN DIEGO CA 92124

AJIT & SHAKUN VASVANI
7775 GOLDFISH WAY
SAN DIEGO CA 92124

ROBERTO R JR & KOOYMAN TONI VELA
11478 VIA PROMESA
SAN DIEGO CA 92124

JIM VELASQUES
5776 42ND STREET
RIVERSIDE CA 92509

HENRY G & JEANNE H VERMILLION
3022 PALM VISTA CT
EL CAJON CA 92019

GENE A & BARBARA VILLAGRANA
2506 WIND RIVER RD
EL CAJON CA 92019

JOHN & ANGELINA VILLARRUEL
9605 DOMINO DR
LAKESIDE CA 92040

GERTRUD VONAMELUNXEN
2117 LIME ROCK CT
EL CAJON CA 92019

ERIC J & JENNIFER L WADE
10834 SIMA CT
SANTEE CA 92071

ELIZABETH S WADLOW
2440 MONETTE DR
SAN DIEGO CA 92123

CHRISTOPHER S & BARBARA A WAGNER
1829 LOLA LN
EL CAJON CA 92019

ABDUL WALI
9061 RONDA AVE
SAN DIEGO CA 92123

HENRY J & TATIANA P WALKER
6390 KIMI LN
LA MESA CA 91942

JAMES P & MARY W WALKER
13250 WILLOW RD
LAKESIDE CA 92040

TIMOTHY W & JO A R WALKER
2881 WILDWIND DR
EL CAJON CA 92019

MICHAEL W & MICHELLE C WALTERS
9482 DEANLY ST
LAKESIDE CA 92040

DAVID W & SUZANNE WANG
4587 RUEDA DR
SAN DIEGO CA 92124

SIMON & JULIE WARNER INGEMAR
4503 CALLE DE VIDA
SAN DIEGO CA 92124

ARTHUR J & JOANNE Y WATSON
4597 RUEDA DR
SAN DIEGO CA 92124

DANIEL S & BARBARA J WEBER
1761 HOTEL CIR S #200
SAN DIEGO CA 92108

JANINE WEBER-BAND
3004 16TH STREET #204
SAN FRANCISCO CA 94103

SHEILA R WEINER
4765 SEDA DR
SAN DIEGO CA 92124

DENNIS C & DENISE K WEISER
10851 EASTHAVEN CT
SANTEE CA 92071

ROBERT H & CAROL J WELLS
13220 WILLOW RD
LAKESIDE CA 92040

ROBERT H & CAROL J TRS WELLS
13220 WILLOW RD
LAKESIDE CA 92040

DENNIS R & LINDA M WENZL
10955 EASTHAVEN CT
SANTEE CA 92071

CHARLENE L WESSELS
10930 VISTA CAMINO
LAKESIDE CA 92040

ROGER E & JULIE L WESSELY
11105 LARKRIDGE ST
SANTEE CA 92071

FANITA RANCH L P WESTBROOK
9404 GENESEE AVE #340
LA JOLLA CA 92037

ROBERT A II & MICHELL WHEELINGTON
9337 TIFFANY PARK PL
EL CAJON CA 92021

MARK B WHILLOCK
PO BOX 2322
LA MESA CA 91943

MARK B & SUSAN K WHILLOCK
PO BOX 2322
LA MESA CA 91943

MICHAEL S & TINA M WHITE
11405 PALABRA CT
SAN DIEGO CA 92124

RICHARD D WHITE
11347 EUCALYPTUS HILLS DR
LAKESIDE CA 92040

THOMAS W & HANNELORE WILCOX
2328 WIND RIVER RD
EL CAJON CA 92019

MICHAEL S & LESLIE A WILEY
10512 PRINCESS JOANN RD
SANTEE CA 92071

LARRY & LAURIE WILKINS
9459 DEANLY ST
LAKESIDE CA 92040

RICHARD S & LINDA M WILKINS
10974 EASTHAVEN CT
SANTEE CA 92071

MARK A & JODI M WILLHELM
8446 HAWICK TER
EL CAJON CA 92021

JEANNIE V WILLIAMS
2472 MONETTE DR
SAN DIEGO CA 92123

LANCE E & JANE A WILLIAMS
BOX 670 NSGA
WINTER HARBOR ME 4693

ALICE E WILSON
10970 FILLBROOK DR
LAKESIDE CA 92040

Miguel-Mission 230 kV #2 Project
SCOPING REPORT APPENDIX A-2. NOP MAILING LIST

CHARLES R & PAMELA F WILSON
10240 EASTHAVEN DR
SANTEE CA 92071

HAROLD & DOLORES WILSON
10830 STONEY CREEK CT
SANTEE CA 92071

JERRY WILSON
PO BOX 3772
LA MESA CA 91944

NOEL P & RUTH M WILSON
4647 RUEDA DR
SAN DIEGO CA 92124

ROBERT & JACKSON LAVENDA WILSON
9031 RONDA AVE
SAN DIEGO CA 92123

STEVEN R & TINA J WILSON
10829 SIMA CT
SANTEE CA 92071

JANICE L WIRTZ
9481 DEANLY ST
LAKESIDE CA 92040

JOHN A WITKOWSKI
13925 CHERYL CREEK DR
EL CAJON CA 92021

WILLIAM C & TERESA D WOLCOTT
1970 DONAHUE DR
EL CAJON CA 92019

JAY B WOOD
2285 RUNABOUT PL
EL CAJON CA 92019

KEVIN WOODRUFF
980 9TH STREET, 16TH FLOOR
SACRAMENTO CA 95814

RICHARD A & JUDY C WOODS
8707 CORDIAL RD
EL CAJON CA 92021

RICK D & ELISABETH N A JACO WOODS
9081 RONDA AVE
SAN DIEGO CA 92123

ARTHUR W JR & LINDA T WOOLSEY
10708 ELDERWOOD LN
SAN DIEGO CA 92131

GLORIA J WORK
10954 VALLE VISTA RD
LAKESIDE CA 92040

ROBERT C & CHRISTIE A WRIGHT
4507 VIA PALABRA
SAN DIEGO CA 92124

GARY R WYMA
2889 WINDWOOD WAY
EL CAJON CA 92019

GARY R WYMA
PO BOX 60451
PASADENA CA 91116

AMER M & AZHAR P YOON
12319 CALLE ALBARA #15
EL CAJON CA 92019

CHARLEY C & AE J YOON
11468 VIA PROMESA
SAN DIEGO CA 92124

CHESTER L & KATHLEEN D YORK
13949 CHERYL CREEK DR
EL CAJON CA 92021

DALOUR & BELL NANCY YOUNAN
2440 WIND RIVER RD
EL CAJON CA 92019

NIZAR & BUTHAINA YOUNAN
2537 VISTA RODEO DR
EL CAJON CA 92019

JOHN F & SHARON YOUNG
PO BOX 7530
UDHAILIYAH SAUDI ARABIA 31311

KENYON M & FARELLA-YOUNG NA YOUNG
3182 JAMACHA VIEW DR
EL CAJON CA 92019

ROBERT C & LORRIE J YOUNG
8627 CORDIAL RD
EL CAJON CA 92021

BILL C & NANCY H YOUNGER
1000 N JOHNSON AVE
EL CAJON CA 92020

HAYTHAM & NAJWA YOUSIF
3025 PALM VISTA CT
EL CAJON CA 92019

LAITH J & FATIN YOUSIF
1819 LOLA LN
EL CAJON CA 92019

LOUAY YOUSIF
PO BOX 689
RANCHO SANTA FE CA 92067

SAMI S YOUSIF
3003 LASVEN CT
EL CAJON CA 92019

BARBARA N ZABIEREK
13893 JACK OAK LN
LAKESIDE CA 92040

ELMER H & CORINNE C ZACHAY
9117 GAUCHO LN
EL CAJON CA 92021

LOUIS Y ZAROUR
3282 CABRILLO MESA DR
SAN DIEGO CA 92123

KHAMIS E & HANAA A ZAYA
3035 JAMACHA VIEW DR
EL CAJON CA 92019

NIERAN ZETO
3040 PALM VISTA CT
EL CAJON CA 92019

SAHER ZETO
3023 LASVEN CT
EL CAJON CA 92019

BASIL & RAEDA ZETOUNA
3092 JAMACHA VIEW DR
EL CAJON CA 92019

MUNTHIR G & FATIN S ZETOUNA
3150 JAMACHA VIEW DR
EL CAJON CA 92019

GEORGE & GERTRUDE J ZIEGENFUSS
2812 WILLOW GLEN DR
EL CAJON CA 92019

ARNOLD R & BETTY L ZIEGLER
2412 BARTEL PL
SAN DIEGO CA 92123

LAITHE & YOUSIF FATIN ZILLO
1819 LOLA LN
EL CAJON CA 92019

JAY W & PAMELA A ZIMMER
3173 JAMACHA VIEW DR
EL CAJON CA 92019

FREDERICK J & LESLIE J G ZITREN
2822 WILLOW GLEN DR
EL CAJON CA 92019

FRED ZUCKERMAN
4502 VIA PALABRA
SAN DIEGO CA 92124

ABELL FAMILY TRUST 01-25-96
10180 QUAIL CANYON RD
EL CAJON CA 92021

RICHARD SMITH
AIR POLLUTION CONTROL DISTRICT
9150 CHESAPEAKE DRIVE
SAN DIEGO CA 92133-1096

ALLAN TRUST 06-04-92
9547 PODELL AVE
SAN DIEGO CA 92123

ASKER FAMILY TRUST 04-05-01
3052 JAMACHA VIEW DR
EL CAJON CA 92019

STEVEN SOUTHERLAND
B & RHONDA
8440 HAWICK TER
EL CAJON CA 92021

CLIFFORD LACHAPPA
BARONA BAND OF THE CAPITAN GRANDE
1095 BARONA ROAD
LAKESIDE CA 92040

BARTON FAMILY TRUST 02-22-93
9476 GOODWICK CT
SAN DIEGO CA 92123

BAUERLE D & C FAMILY TRUST
10807 BROKEN WHEEL RD
LAKESIDE CA 92040

BEITH MARLYS FAMILY TRUST 08-28
10807 VALLE VISTA RD
LAKESIDE CA 92040

SHAWN HAGGERTY
BEST, BEST, AND KRIEGER, LLP
402 WEST BROADWAY 13TH FLOOR
SAN DIEGO CA 92101-3542

BICE 1990 FAMILY TRUST
8551 CORDIAL RD
EL CAJON CA 92021

BISHARAT FAMILY TRUST 06-05-01
3126 JAMACHA VIEW DR
EL CAJON CA 92019

BISHOP FAMILY TRUST 04-06-94
10758 STRATHMORE DR
SANTEE CA 92071

BOEHRIG FAMILY TRUST 03-04-95
2014 VALLEY LAKE DR
EL CAJON CA 92020

Miguel-Mission 230 kV #2 Project
SCOPING REPORT APPENDIX A-2. NOP MAILING LIST

BOULDER POINT HOMEOWNERS ASSN
1 COLUMBIA #2020
ALISO VIEJO CA 92656

BOYS&GIRLS AID SOCIETY OF S D L
2525 CAMINO DEL RIO S #155
SAN DIEGO CA 92108

BRESHEARS FAMILY TRUST 10-22-98
3750 37TH ST
SAN DIEGO CA 92105

BRUBAKER LIVING TRUST 06-27-01
4037 RISA CT
SAN DIEGO CA 92124

BRZEZINSKI FAMILY TRUST 09-17-8
11138 MORENO AVE
LAKESIDE CA 92040

BUCHMANN MAX TRUST 09-12-02
14464 RANCH TRAIL DR
EL CAJON CA 92021

BUCKALLEW FAMILY TRUST 03-19-94
626 SINGING VISTA CT
EL CAJON CA 92019

RON JAEGER
BUREAU OF INDIAN AFFAIRS
2800 COTTAGE WAY
SACRAMENTO CA 95825

VIRGIL TOWNSEND
BUREAU OF INDIAN AFFAIRS
2038 IOWA STREET, SUITE 101
RIVERSIDE CA 92507-0001

BURTON REVOCABLE TRUST
10963 VISTA CAMINO
LAKESIDE CA 92040

BUSALACCHI FAMILY TRUST 01-23-0
3045 LASVEN CT
EL CAJON CA 92019

BUTTERFIELD FAMILY TRUST 01-27-
3036 PALM VISTA CT
EL CAJON CA 92019

DARRYL W. YOUNG
CA DEPARTMENT OF CONSERVATION
801 K STREET - MS 24-01
SACRAMENTO CA 95814

CA DEPARTMENT OF FISH AND GAME
4949 VIEWRIDGE AVE.
SAN DIEGO CA 92123

CA DEPARTMENT OF HEALTH SERVICES
PO BOX 942732
SACRAMENTO CA 94234-7320

DIANA M. BONTA
CA DEPARTMENT OF HEALTH SERVICES
714 P STREET, ROOM 1350
SACRAMENTO CA 95814

CARL COSTELLA
CA DEPARTMENT OF HEATH SERVICES
185 BERRY STREET, SUITE 260
SAN FRANCISCO CA 94107-1724

RUTH COLEMAN
CA DEPARTMENT OF PARKS AND RECREATION
1416 NINTH STREET, 14TH FLOOR
SACRAMENTO CA 95814

KNOX MELLON
CA DEPARTMENT OF PARKS AND RECREATION
1416 NINTH STREET, 14TH FLOOR
SACRAMENTO CA 95814

CA DEPARTMENT OF TRANSPORTATION
PO BOX 942874
SACRAMENTO CA 94274-0001

MARLIN K. BECKWITH
CA DEPARTMENT OF TRANSPORTATION
1130 K STREET, 4TH FLOOR
SACRAMENTO CA 94274-0001

GARY GALLEGOS
CA DEPARTMENT OF TRANSPORTATION
PO BOX 85406
SAN DIEGO CA 92186-4506

WINSTON HICKOX
CA ENVIRONMENTAL PROTECTION AGENCY
1002 I STREET, 25TH FLOOR
SACRAMENTO CA 95814

PETER V. ALLEN
CA PUBLIC UTILITIES COMMISSION
505 VAN NESS AVENUE
SAN FRANCISCO CA 94102-3214

ROOSEVELT GRANT
CA PUBLIC UTILITIES COMMISSION
505 VAN NESS AVENUE
SAN FRANCISCO CA 94102-3214

JAMES E. SCARFF
CA PUBLIC UTILITIES COMMISSION
505 VAN NESS AVENUE
SAN FRANCISCO CA 94102-3214

MARIA E. STEVENS
CA PUBLIC UTILITIES COMMISSION
320 WEST 4TH STREET, SUITE 500
LOS ANGELES CA 90013

JOHN H. ROBERTUS
CA REGIONAL WATER QUALITY CONTROL BOARD
9771 CLAIREMONT MESA BLVD., SUITE A
SAN DIEGO CA 92124-1331

MICHAEL KENNEDY
CA STATE AIR RESOURCES CONTROL BOARD
202 L STREET
SACRAMENTO CA 95814

WALT PETTIT
CA STATE WATER RESOURCES CONTROL BOARD
901 P STREET
SACRAMENTO CA 95814

CAJON VALLEY UNION SCHOOL DISTRICT
189 ROANOKE ROAD
EL CAJON CA 92020

CALDWELL EARL O TRUST 03-06-96
10880 OAK CREEK DR
LAKESIDE CA 92040

CATHERINE WITHERSPOON
CALIFORNIA AIR RESOURCES BOARD
1002 I STREET
SACRAMENTO CA 95812

ROBERT THERKELSEN
CALIFORNIA ENERGY COMMISSION
1516 NINTH ST.
SACRAMENTO CA 95814

JEFFREY MILLER
CALIFORNIA ISO
152 BLUE RAVINE ROAD
FOLSOM CA 95630

JEANNE M. SOLE
CALIFORNIA ISO
151 BLUE RAVINE ROAD
FOLSOM CA 95630

CALIFORNIA MEMORIAL ESTATES INC
360 W 5300 S
SALT LAKE CITY UT 84123

MARY D. NICHOLS
CALIFORNIA RESOURCES AGENCY
1416 9TH STREET, SUITE 311
SACRAMENTO CA 95814

CAMERON MORTON
2866 FALLBROOK LN
SAN DIEGO CA 92117

RALPH GOFF
CAMPO BAND OF MISSION INDIANS
36190 CHURCH ROAD, SUITE 1
CAMPO CA 91906

CANYON VIEW ESTATES 2002 LP
3511 CAMINO DEL RIO S #408
SAN DIEGO CA 92108

CASTREJON 2001 FAMILY TRUST 11-
535 CARDIFF ST
SAN DIEGO CA 92114

CEDERBERG FAMILY TRUST 08-14-89
2405 MAMMOTH DR
SAN DIEGO CA 92123

CHAMBERLIN FAMILY TRUST 11-06-9
2134 RICARD CT
EL CAJON CA 92019

CHUN FAMILY TRUST 03-25-94
8378 SERENITY CT
EL CAJON CA 92021

CITY OF SAN DIEGO
CITY ADMINISTRATION BUILDING
202 C STREET, MS5A
SAN DIEGO CA 92101

GAIL GOLDBERG
CITY OF SAN DIEGO
CITY ADMINISTRATION BUILDING
202 C STREET, MS5A
SAN DIEGO CA 92101

CITY OF SANTEE
10601 MAGNOLIA AVE
SANTEE CA 92071

CITY OF SANTEE
10601 MAGNOLIA AVENUE
SANTEE CA 92071

DOUG WILLIFORD
CITY OF SANTEE
10601 MAGNOLIA AVENUE
SANTEE CA 92071

CLARKE FAMILY TRUST 11-08-90
2560 BRUST CT
EL CAJON CA 92019

COLLINS FAMILY TRUST 10-07-02
14097 HAWICK DR
EL CAJON CA 92021

Miguel-Mission 230 kV #2 Project
SCOPING REPORT APPENDIX A-2. NOP MAILING LIST

JIM BRADBURY
COMMANDING GENERAL
MCAS MIRAMAR
PO BOX 452000
SAN DIEGO CA 92145-2000

LUDY DAVIS
COMMANDING GENERAL
MCAS MIRAMAR
PO BOX 452000
SAN DIEGO CA 92145-2000

CONFORTH JAMES R TRUST 03-02-01
10837 OAK CREEK DR
LAKESIDE CA 92040

CONNELLY W R INC
9210 OLIVE DR
SPRING VALLEY CA 91977

COUNTY OF SAN DIEGO
5201 RUFFIN RD
STE B
SAN DIEGO CA 92123

DENNIS HULSE
COUNTY OF SAN DIEGO
5201 RUFFIN ROAD, SUITE B
SAN DIEGO CA 92123

GARY PRYOR
COUNTY OF SAN DIEGO
5201 RUFFIN ROAD, SUITE B
SAN DIEGO CA 92123

COX FAMILY TRUST 06-11-02
10104 SIR LANCELOT DR
SANTEE CA 92071

TIMOTHY MCMASTER
CREST/DEHESA/GRANITE HILLS/
HARBISON CANYON PLANNING GROUP
PO BOX 21489
EL CAJON CA 92021-1489

DAKOTA RANCH DEVELOPMENT CO
2533 S HIGHWAY 101 #240
CARDIFF CA 92007

DAKOTA RANCH DEVELOPMENT CO LLC
2533 S HIGHWAY 101 #240
CARDIFF CA 92007

DEARCOT TRUST 08-24-95
3449 PAR FOUR DR
EL CAJON CA 92019

DEBORD FAMILY TRUST 08-12-98
9536 PODELL AVE
SAN DIEGO CA 92123

RENEE BAHL
DEPT OF PARKS AND RECREATION
5201 RUFFIN RD.
SAN DIEGO CA 92123

DEWITT 1993 REVOCABLE TRUST
11432 PALABRA CIR
SAN DIEGO CA 92124

DOLL REVOCABLE TRUST 11-28-00
10846 STONEY CREEK CT
SANTEE CA 92071

DOMINIQUE 2000 REVOCABLE TRUST
13802 JACK OAK LN
LAKESIDE CA 92040

DOYLE/BASS FAMILY TRUST 05-25-0
13973 CHERYL CREEK DR
EL CAJON CA 92021

E R P OPERATING LTD PTNSHP
PO BOX 87407
CHICAGO IL 60680

EDWARDS FAMILY TRUST 09-29-97
2419 MAMMOTH DR
SAN DIEGO CA 92123

ENVIRONMENTAL TRUST INC
7879 EL CAJON BLVD
LA MESA CA 91941

ESCALA MISSION CITY LLC
10721 TREEANA ST #200
SAN DIEGO CA 92131

ESTRADA FAMILY TRUST 03-31-94
9001 RONDA AVE
SAN DIEGO CA 92123

HARLAN PINTO
EWIIAAPAYP TRIBAL OFFICE
PO BOX 2250
ALPINE CA 91903

ROBERT STRONG
FAA-WESTERN PACIFIC DIV.
PO BOX 92007 WPC
LOS ANGELES CA 90009

FENTON EL DORADO HILLS LLC
7588 METROPOLITAN DR
SAN DIEGO CA 92108

FISHER FAMILY TRUST 01-18-91
2436 EILEEN DR
SAN DIEGO CA 92123

FORD 1997 INTERVIVOS FAMILY TRUST
1015 VISTA MADERA LN
EL CAJON CA 92019

FORD FAMILY REVOCABLE TRUST
560 CALLE DE LA SIERRA
EL CAJON CA 92019

FORD INTERVIVOS FAMILY 1997 TRUST
1015 VISTA MADERA LN
EL CAJON CA 92019

FORTIN REVOCABLE 2002 TRUST 09-
2516 PINE GLEN LN
EL CAJON CA 92019

G A DEVELOPMENT LLC
9834 RIVER ST
LAKESIDE CA 92040

GALE FAMILY PROPERTIES LTD
2850 6TH ST
SAN DIEGO CA 92103

GAVETT FAMILY TRUST 03-24-93
7108 MIMOSA DR
CARLSBAD CA 92009

GEIER PAUL&SETSUKO REVOCABLE TR
2336 WIND RIVER DR
EL CAJON CA 92019

GLOWACKI FAMILY TRUST 10-16-96
8651 CORDIAL RD
EL CAJON CA 92021

GOETZ FAMILY TRUST 06-11-98
2502 SINGING VISTA WAY
EL CAJON CA 92019

GOODMAN IRREVOCABLE TRUST
5330 LE BARRON RD
SAN DIEGO CA 92115

GOODMAN IRREVOCABLE TRUST 12-11
5330 LE BARRON RD
SAN DIEGO CA 92115

GRANT FAMILY TRUST 05-15-85
5986 KANTOR ST
SAN DIEGO CA 92122

GROSSMONT UNION HIGH SCHOOL DISTRICT
PO BOX 1043
LA MESA CA 91944

HADDOCK ROBERT S TRUST 02-25-98
2966 WILDWIND DR
EL CAJON CA 92019

HALDERMAN LIVING TRUST 03-03-97
10773 OAK CREEK DR
LAKESIDE CA 92040

HAMEL FAMILY TRUST
11103 MORENO AVE
LAKESIDE CA 92040

HANLON FAMILY TRUST 12-05-97
4591 RUEDA DR
SAN DIEGO CA 92124

HELIX 1960 LTD
PO BOX 15453
SAN DIEGO CA 92175

HELIX 1960 LTD
PO BOX 15453
SAN DIEGO CA 92175

HELIX LAND CO LTD
PO BOX 15453
SAN DIEGO CA 92175

HELIX WATER DISTRICT
7811 UNIVERSITY AVE
LA MESA CA 91941

HENDERSON DOUGLAS S TRUST
2524 SINGING VISTA WAY
EL CAJON CA 92019

HENDERSON REVOCABLE LIVING TRUST
1225 BUTTWOOD CT
EL CAJON CA 92019

HESS FAMILY TRUST
10947 VISTA CAMINO
LAKESIDE CA 92040

HESTERS GRANITE CO
PO BOX 2518
EL CAJON CA 92021

HOLLOWAY FAMILY TRUST 11-29-97
13204 OLD BARONA RD
LAKESIDE CA 92040

HOSHI TRUST B 10-03-97
812 ARROYO PL
CHULA VISTA CA 91910

HUFFMAN D R & ASSOCIATES LLC
5125 CONVOY ST #301
SAN DIEGO CA 92111

Miguel-Mission 230 kV #2 Project
SCOPING REPORT APPENDIX A-2. NOP MAILING LIST

HURTADO MARY L R 2001 TRUST 09-
2402 BARTEL PL
SAN DIEGO CA 92123

REBECCA MACY
INAJA BAND OF MISSION INDIANS
PO BOX 186
SANTA YSABEL CA 92070

DARRELL JAMES&DIANE JOHNSON
IRE
4011 CAMINO ALEGRE
LA MESA CA 91941

ISAAC JEFFREY&JEAN FAMILY TRUST
2598 CASTELLON TER
EL CAJON CA 92019

ISHIHARA TRUST 03-05-86
4677 BAXTER CT
SAN DIEGO CA 92117

J J B LAND CO LLC
1508 MISSION RD
ESCONDIDO CA 92029

JABRO FAMILY TRUST 06-21-01
4999 PAGUERA CT
SAN DIEGO CA 92124

JAMACHA JUNCTION INC
7374 EL CAJON BLVD
LA MESA CA 91941

KENNETH MEZA
JAMUL INDIAN VILLAGE
PO BOX 612
JAMUL CA 91935

JENSEN Q-TIP TRUST 10-18-96
1815 ELAN LN
EL CAJON CA 92019

JONES FAMILY TRUST 05-10-02
13750 CHOISSER LN
LAKESIDE CA 92040

JONES JEAN I FAMILY TRUST 01-06
13352 WILLOW RD #B
LAKESIDE CA 92040

JONES LIVING TRUST 07-31-91
4769 SEDA DR
SAN DIEGO CA 92124

JORGENSEN FAMILY TRUST 10-01-99
10275 VIACHA DR
SAN DIEGO CA 92124

KENNEDY DEVELOPMENT OF CA
169 SAXONY RD #214
ENCINITAS CA 92024

KONJA FAMILY TRUST 11-14-00
2801 JAMUL HEIGHTS DR
EL CAJON CA 92019

PAUL CUERO
KUMEYAAY CULTURAL HERITAGE PRESERVATION
36190 CHURCH ROAD, SUITE 5
CAMPO CA 91906

RON CHRISTMAN
KUMEYAAY CULTURAL HISTORIC COMMITTEE
56 VIEJAS GRADE ROAD
ALPINE CA 91901

STEVE BANEGAS
KUMEYAAY CULTURAL REPATRIATION COMMITTEE
1095 BARONA ROAD
LAKESIDE CA 92040

L B THREE LLC
4120 30TH ST #202
SAN DIEGO CA 92104

L D N REAL ESTATE INC
9150 WILSHIRE BLVD #175
BEVERLY HILLS CA 90212

JAMES HILL
LA POSTA BAND OF MISSION INDIANS
PO BOX 1048
BOULEVARD CA 91905

GWENDOLYN PARADA
LA POSTA BAND OF MISSION INDIANS
PO BOX 1048
BOULEVARD CA 91905

LAKESIDE FIRE PROTECTION DISTRICT
12365 PARKSIDE STREET
LAKESIDE CA 92040-1103

RICHARD HENSLE
LAKESIDE PLANNING GROUP
PO BOX 2040
LAKESIDE CA 92040-2040

LAKESIDE UNION SCHOOL DISTRICT
12335 WOODSIDE AVENUE
LAKESIDE CA 92040

LAKESIDE VIEW ESTATES LLC
139 S BALDWIN AVE
SIERRA MADRE CA 91024

LAKESIDE WATER DISTRICT
10375 VINE STREET
LAKESIDE CA 92040

LAUREL RIDGE EL CAJON LP
1500 SANSOME ST #200
SAN FRANCISCO CA 94111

LAWSON TRUST 04-04-95
228 LINDELL AVE
EL CAJON CA 92020

LEE FAMILY TRUST 06-21-95
1953 ROWAN ST
SAN DIEGO CA 92105

LEE FAMILY TRUST 08-06-02
13749 CHOISSER LN
LAKESIDE CA 92040

LEPKER FAMILY REVOCABLE TRUST 0
10865 VALLE VISTA RD
LAKESIDE CA 92040

LEWIS FAMILY TRUST 04-26-01
1824 LOLA LN
EL CAJON CA 92019

LIHME FAMILY TRUST 07-28-99
2514 JAMACHA RD #50244
EL CAJON CA 92019

LINDSAY KAREN M LIVING TRUST 09
2440 VISTA RODEO DR
EL CAJON CA 92019

LOGAN 2000 COMMUNITY PROPERTY T
10265 VIACHA DR
SAN DIEGO CA 92124

LOWRANCE FAMILY TRUST 09-01-99
11953 SERENA RD
LAKESIDE CA 92040

M L L INVESTMENT CO
1501 5TH AVE #200
SAN DIEGO CA 92101

MADEIRA HEIGHTS OWNERS ASSN INC
225 BROADWAY #1100
SAN DIEGO CA 92101

MALMQUIST FAMILY TRUST 01-20-93
645 SINGING VISTA DR
EL CAJON CA 92019

MARINE CORPS AIR STATION MIRAMAR
PO BOX 452013
SAN DIEGO CA 92145-2013

MARTINEZ LIVING TRUST 05-15-97
3401 PAR FOUR DR
EL CAJON CA 92019

MATSUMOTO FAMILY TRUST 08-21-00
2402 MELBOURNE DR
SAN DIEGO CA 92123

MCDONALD FAMILY TRUST 12-28-95
3525 CAROWAY CT
EL CAJON CA 92019

MCGEARY TRUST 05-21-01
11745 ALTOONA DR
EL CAJON CA 92020

MCGHEE FAMILY TRUST 05-04-99
13870 DEANLY CT
LAKESIDE CA 92040

MCINTOSH TRUST 07-08-92
13759 CHOISSER LN
LAKESIDE CA 92040

MCKAY FAMILY TRUST 05-05-92
10921 VISTA CAMINO
LAKESIDE CA 92040

HOWARD MACY
MESA GRANDE BAND OF MISSION INDIANS
PO BOX 270
SANTA YSABEL CA 92070

MEYER FAMILY TRUST
2348 HARCOURT DR
SAN DIEGO CA 92123

MILAR FAMILY LIVING TRUST 08-18
PO BOX 420875
SAN DIEGO CA 92142

MILLER FAMILY TRUST 06-17-02
9489 DEANLY ST
LAKESIDE CA 92040

MISSION GORGE LLC
13160 MINDANAO WAY #180
MARINA DEL REY CA 90292

JOHN BARONE
MISSION TRAILS REGIONAL PARK
ONE FATHER JUNIPERO SERRA TRAIL
SAN DIEGO CA 92119

MLL INVESTMENT
1501 5TH AVE #200
SAN DIEGO CA 92101

Miguel-Mission 230 kV #2 Project
SCOPING REPORT APPENDIX A-2. NOP MAILING LIST

MLL INVESTMENT CO
1501 5TH AVE #200
SAN DIEGO CA 92101

REBECCA WOOD
MLL INVESTMENT CO
1501 5TH AVE #200
SAN DIEGO CA 92101

MONELL 1995 FAMILY TRUST
12037 SERENA RD
LAKESIDE CA 92040

MOORE TRUST 07-17-97
9456 GOODWICK CT
SAN DIEGO CA 92123

MRW & ASSOCIATES
1999 HARRINGTON ST, SUITE 1440
OAKLAND CA 94612

NARANG FAMILY TRUST 07-13-94
9533 MONTEMAR DR
SPRING VALLEY CA 91977

ROB WOOD
NATIVE AMERICAN HERITAGE COMMISSION
915 CAPITAL MALL, ROOM 364
SACRAMENTO CA 95814

ANDREA SCHIAVINO
NAVAL FACILITIES ENGINEERING COMMAND
DESERT AREA
1220 PACIFIC HIGHWAY, CODE 5DPR
SAN DIEGO CA 92132

NOAH HOMES INC
12526 CAMPO RD
SPRING VALLEY CA 91978

NORTHSIDE DRIVE LP
1100 PEACHTREE ST NE #2800
ATLANTA GA 30309

NORTHSIDE DRIVE LP
8745 AERO DR #330
SAN DIEGO CA 92123

NORTON FAMILY TRUST 09-09-99
10924 EASTHAVEN CT
SANTEE CA 92071

OTAY WATER DISTRICT
2554 SWEETWATER SPRINGS BLVD.
SPRING VALLEY CA 91978-2096

ERIC EISENMAN
PACIFIC GAS & ELECTRIC
345 CALIFORNIA ST, SUITE 2600
SAN FRANCISCO CA 94104

PADRE DAM MUNICIPAL WATER DISTRICT
10887 WOODSIDE AVENUE
SANTEE CA 92071

PASATIEMPO HOMEOWNERS ASSN
3900 HARNEY ST
SAN DIEGO CA 92110

PATEL FAMILY TRUST 04-16-98
3174 JAMACHA VIEW DR
EL CAJON CA 92019

PATEL S&S TRUST 05-07-97
11557 WINDING RIDGE DR
SAN DIEGO CA 92131

PATRIA INC
12551 FLETCHER DR
GARDEN GROVE CA 92840

PENNY FAMILY TRUST 08-02-94
2850 WILLOW GLEN DR
EL CAJON CA 92019

PERKINS FAMILY TRUST 01-20-00
13856 JACK OAK LN
LAKESIDE CA 92040

PERNICANO LIVING TRUST 01-10-00
9458 DEANLY ST
LAKESIDE CA 92040

PETERS FAMILY TRUST 09-13-01
2480 COLINAS PASEO
EL CAJON CA 92019

PETERSEN FAMILY TRUST 08-03-96
4705 AVOCADO BLVD
LA MESA CA 91941

PETERSEN TRUST 12-22-94
594 FRONT ST #A
EL CAJON CA 92020

PETTINELLI TRUST 08-02-94
8511 CORDIAL RD
EL CAJON CA 92021

PLEIN FAMILY TRUST 09-12-02
9560 PODELL AVE
SAN DIEGO CA 92123

PODELL AVE TRUST 05-21-03
9511 PODELL AVE
SAN DIEGO CA 92123

POWAY UNIFIED SCHOOL DISTRICT
13626 TWIN PEAKS RD
POWAY CA 92064

PREMIER GOLF INVS INC
110 W C ST #1901
SAN DIEGO CA 92101

PREMIER GOLF PROPERTIES P
8332 CASE ST
LA MESA CA 91942

PRIEST DEVELOPMENT INC
PO BOX 1708
EL CAJON CA 92022

PURVES FAMILY REVOCABLE LIVING
2451 VISTA MADERA WAY
EL CAJON CA 92019

QUITQUIT FAMILY TRUST 06-30-00
3002 COTTONWOOD VIEW DR
EL CAJON CA 92019

RATONEL FAMILY TRUST 06-20-89
1515 L AVE
NATIONAL CITY CA 91950

REED FAMILY TRUST 01-22-03
354 GLENMONT DR
SOLANA BEACH CA 92075

REED FAMILY TRUST 04-18-91
PO BOX 1773
SOLANA BEACH CA 92075

REYNOLDS FAMILY TRUST 11-22-89
2405 CERRO SERENO
EL CAJON CA 92019

ROEHRS FAMILY TRUST 12-31-02
2552 SINGING VISTA WAY
EL CAJON CA 92019

ROMERO FAMILY TRUST 10-15-81
PO BOX 1993
EL CAJON CA 92022

CHERYL JONES
SAN DIEGO CO. PLANNING COMM.
5201 RUFFIN ROAD, SUITE B
SAN DIEGO CA 92123

SAN DIEGO COUNTY FISH & GAME ASSN
2082 WILLOW GLEN DR
EL CAJON CA 92019

SAN DIEGO COUNTY FISH&GAME ASSN
2082 WILLOW GLEN DR
EL CAJON CA 92019

SAN DIEGO COUNTY TITLE CO TR HA
611 GRANT ST
OCEANSIDE CA 92054

SAN DIEGO COUNTY WATER AUTHORITY
4677 OVERLAND AVENUE
SAN DIEGO CA 92123

MARY TURLEY
SAN DIEGO GAS & ELECTRIC CO
8315 CENTURY PARK CT CP22D
SAN DIEGO CA 92123-1550

VAL URBAN
SAN DIEGO NATIONAL WILDLIFE REFUGE
13910 LYONS VALLEY ROAD
JAMUL CA 91935

JOHN ROBERTUS
SAN DIEGO REGIONAL WATER QUALITY
9174 SKY PARK COURT, SUITE 100
SAN DIEGO CA 92124-1325

SAN MISSION PROPERTIES INC
11421 EUCALYPTUS HILLS DR
LAKESIDE CA 92040

ALLEN E. LAWSON
SAN PASQUAL BAND OF MISSION INDIANS
PO BOX 365
VALLEY CENTER CA 92082

BEN SCERATO
SANTA YSABEL BAND OF MISSION INDIANS
PO BOX 130
SANTA YSABEL CA 92070

SANTEE CHURCH OF THE NAZARENE
10920 SUMMIT AVE
SANTEE CA 92071

ELLEN HOLAWAY & GREG GUENTHER
SANTEE CITIZENS FOR SAFE POWER
9716 YELLOWSTONE PLACE
SANTEE CA 92071

SBA PROPERTIES INC <LF> JAMACHA
7374 EL CAJON BLVD
LA MESA CA 91941

SCARBOROUGH FAMILY 1997 TRUST 0
633 SINGING VISTA DR
EL CAJON CA 92019

SCHLEGEL FAMILY TRUST 03-29-90
620 SINGING VISTA CT
EL CAJON CA 92019

SCHMIDT FAMILY TRUST 08-07-96
10856 OAK CREEK DR
LAKESIDE CA 92040

Miguel-Mission 230 kV #2 Project
SCOPING REPORT APPENDIX A-2. NOP MAILING LIST

SEBERT TRUST 08-09-01 10747 OAK CREEK DR LAKESIDE CA 92040	JOHN HAMMOND SWEETWATER PLANNING GROUP PO BOX 460 BONITA CA 91908	VILLA DOMINIQUE VIEWHOME ASSN 3025 OLYMPIC BLVD SANTA MONICA CA 90404
SEITZ 1990 TRUST 10-04-90 10964 EASTHAVEN CT SANTEE CA 92071	SWISHER FAMILY TRUST 03-31-92 10769 VALLE VISTA RD LAKESIDE CA 92040	W W I PROPERTIES LLC 9595 WILSHIRE BLVD #1001 BEVERLY HILLS CA 90212
THEODORE ROBERTS SEMPRA ENERGY 101 ASH ST, HQ 12B SAN DIEGO CA 92101-3017	SYCAMORE LANDFILL INC 8364 CLAIREMONT MESA BLVD SAN DIEGO CA 92111	JOHN ROBERTUS WATER RESOURCES CONTROL BOARD 1001 I STREET SACRAMENTO CA 95814
SHOREY TRUST 03-10-98 10161 SIR LANCELOT DR SANTEE CA 92071	SYCAMORE LANDFILL INC PO BOX 122283 FORT WORTH TX 76121	WATKINS FAMILY 1989 TRUST 10-16 662 CALLE DE LA SIERRA EL CAJON CA 92019
SIMMONS FAMILY TRUST 06-17-93 4567 RUEDA DR SAN DIEGO CA 92124	GEORGIA TUCKER SYCUAN BAND OF MISSION INDIANS 5459 DEHESA ROAD EL CAJON CA 92021	WATT FAMILY TRUST 05-19-99 10881 OAK CREEK DR LAKESIDE CA 92040
SKIDMORE FAMILY TRUST 12-12-90 9391 BROADVIEW AVE SAN DIEGO CA 92123	SYCUAN TRIBAL DEVELOPMENT CORP 5459 DEHESA RD EL CAJON CA 92019	WEBSTER FAMILY TRUST 07-18-94 10885 BROKEN WHEEL RD LAKESIDE CA 92040
SOTELO REVOCABLE LIVING TRUST 1820 ELAN LN EL CAJON CA 92019	TABER LIVING TRUST 12-14-90 9303 BROADVIEW AVE SAN DIEGO CA 92123	WELLNITZ FAMILY TRUST 08-29-80 6242 CALLE EMPINADA SAN DIEGO CA 92120
JULIE MILLER SOUTHERN CALIFORNIA EDISON 2244 WALNUT GROVE AVE. ROSEMEAD CA 91770	TANGUAY 1989 FAMILY TRUST 07-31 3045 IVANHOE RANCH RD EL CAJON CA 92019	WEST VILLAGE OF SINGING HILLS H 4990 MISSION BLVD SAN DIEGO CA 92109
SOUTHERN PACIFIC PIPE LINES PAR 1100 W TOWN AND COUNTRY RD ORANGE CA 92868	TAYLOR TRUST 08-08-95 1845 ELAN LN EL CAJON CA 92019	WESTBROOK FANITA RANCH LP 9404 GENESEE AVE #340 LA JOLLA CA 92037
SOUTHWEST DIVERSIFIED 12865 POINTE DEL MAR WAY #200 DEL MAR CA 92014	THE OWENS DAVID TRUST 12-21-95 13725 CHOISSER LN LAKESIDE CA 92040	WOKMUNSKIE FAMILY TRUST 07-22-9 10781 OAK CREEK DR LAKESIDE CA 92040
SOUTHWEST DIVERSIFIED/COSCAN PA 12865 POINTE DEL MAR WAY #200 DEL MAR CA 92014	DEANNA SPEHN TIERRASANTA COMMUNITY COUNCIL 10371 MATADOR COURT SAN DIEGO CA 92124	WOLFARTH FAMILY TRUST 2539 SINGING VISTA WAY EL CAJON CA 92019
SPARKS ASSOCIATES LLC 4455 MT ALIFAN DR SAN DIEGO CA 92111	SHANNON BRYANT U.S. ARMY CORPS OF ENGINEERS 16885 WEST BERNARDO DRIVE, SUITE 300 SAN DIEGO CA 92127	WOODY FAMILY TRUST 09-04-02 10767 STRATHMORE DR SANTEE CA 92071
STALNAKER FAMILY TRUST 09-24-96 10861 OAK CREEK DR LAKESIDE CA 92040	KATHLEEN BRUBAKER U.S. FISH AND WILDLIFE SERVICE 6010 HIDDEN VALLEY RD CARLSBAD CA 92008	WRATISLAW FAMILY TRUST 07-30-02 3777 BANCROFT DR SPRING VALLEY CA 91977
STEVENS REVOCABLE LIVING TRUST 10114 PRINCE CHARMING LN SANTEE CA 92071	KATHLEEN BRUBAKER U.S. FISH AND WILDLIFE SERVICE 2730 LOKER AVENUE WEST CARLSBAD CA 92008	
STONE FAMILY TRUST 08-31-01 1241 PEARLBUSH CT EL CAJON CA 92019	SANDRA MARQUEZ U.S. FISH AND WILDLIFE SERVICE 6010 HIDDEN VALLEY RD. CARLSBAD CA 92008	
STONECREST VILLAGE CO LLC 9191 TOWNE CENTRE DR #L101 SAN DIEGO CA 92122	UNION PACIFIC RAILROAD COMPANY 1416 DODGE STREET OMAHA NE 68179	
STRAND FAMILY TRUST 03-23-87 12223 SINTONTE CT SAN DIEGO CA 92128	JACK PHILLIPS VALLEY DE ORO PLANNING GROUP PO BOX 3598 LA MESA CA 91944	
ALFORD & MCGRATH SUNDIN SUNDIN HE 1253 PEARLBUSH CT EL CAJON CA 92019	STEVEN TESAM VIEJAS BAND OF MISSION INDIANS PO BOX 908 ALPINE CA 91903	
SUTER FAMILY TRUST 03-22-02 13679 LENTEJA LN LAKESIDE CA 92040		

APPENDIX A-3

Scoping Meeting Materials

NOTICE OF PUBLIC SCOPING MEETINGS SDG&E'S PROPOSED MIGUEL-MISSION 230 kV #2 PROJECT

The California Public Utilities Commission (CPUC) is conducting two public and agency scoping meetings for the proposed SDG&E Miguel-Mission 230 kV #2 Project. The CPUC is preparing an Environmental Impact Report (EIR) for this project that will: analyze the environmental impacts of the proposed transmission line project, identify alternatives to the proposed project, compare environmental effects of project alternatives, and identify mitigation measures for potentially significant impacts. The purpose of the scoping meetings is to solicit input from interested parties and ensure that the EIR addresses concerns of the public, affected agencies, and interested parties.

SDG&E proposes construction of a new single-circuit 230 kV transmission line to address current and future overloads on existing 138 kV and 69 kV transmission lines. The proposed new and relocated transmission circuits for the project would be installed in the existing 35-mile SDG&E right of way between Miguel Substation and Mission Substation. The proposed project consists of the following three principal components: (1) installing a new 230 kV transmission circuit between Miguel and Mission Substations, (2) relocating the existing 69 kV/138 kV circuits on new pole structures between Miguel Substation and Fanita Junction, and (3) modifying Miguel and Mission Substations. The proposed project is located entirely within San Diego County and passes through the Cities of San Diego and Santee, Marine Corps Air Station Miramar, and unincorporated areas in the eastern portion of the county.

In order to help affected communities understand the proposed project and to explain how the public can participate in the CPUC's decision-making processes, the CPUC will hold two informational meetings at the following times and locations:

Date	Monday September 15, 2003	Tuesday September 16, 2003
Time	5:30 pm – 7:30 pm	7 pm – 9 pm
Location	Spring Valley Branch Library 836 Kempton Street Spring Valley, CA 91977	Santee City Hall 10601 Magnolia Ave, Building 7 Santee, CA 92071

To view additional project information, a map of the proposed transmission line route and substation locations, or a copy of the Notice of Preparation, check the project website at:

http://www.cpuc.ca.gov/Environment/info/asp/miguel_mission/miguelmission.htm

To request additional information, please call (415) 355-5492, e-mail us at rgl@cpuc.ca.gov, or send a written comment by U.S. mail to:

Roosevelt Grant, CPUC
c/o Aspen Environmental Group
1760 Creekside Oaks Drive, Suite 170
Sacramento, CA 95833

CALIFORNIA PUBLIC UTILITIES COMMISSION (CPUC)
Environmental Impact Report (EIR) for the
Miguel-Mission 230 kV #2 Project

Scoping Meeting Agenda

Monday, September 15, 2003
Spring Valley Branch Library

- | | | |
|-------|--|--|
| I. | Sign-in | |
| II. | Welcome, Introductions, and
Agenda Summary | Chris Keller, View Point West |
| III. | Purpose of Scoping | Chris Keller, View Point West |
| IV. | Description of the Proposed Project | Tom Murphy,
Aspen Environmental Group |
| V. | CPUC Process and Schedule | Roosevelt Grant, CPUC |
| VI. | EIR Process | Tom Murphy,
Aspen Environmental Group |
| VII. | Comments from Attending Members of the Public and Agencies | |
| VIII. | Closing Comments | Chris Keller, View Point West |

(See reverse for additional information)

**CALIFORNIA PUBLIC UTILITIES COMMISSION (CPUC)
Environmental Impact Report (EIR) for the
Miguel-Mission 230 kV #2 Project**

Information Repositories

Serra Mesa Branch Library

3440 Sandrock Road
San Diego, CA 92123-2198

Santee Branch Library

9225 Carlton Hills Boulevard #17
Santee, CA 92071

El Cajon Branch Library

201 East Douglas
El Cajon, CA 92020

Spring Valley Branch Library

836 Kempton Street
Spring Valley, CA 91977

Benjamin Branch Library

5188 Zion Avenue
San Diego, CA 92120-2728

Lakeside Branch Library

9839 Vine Street
Lakeside, CA 92040

Rancho San Diego Branch Library

111555 Via Rancho San Diego
El Cajon, CA 92019

Bonita/Sunnyside Branch Library

5047 Central Avenue
Bonita, CA 91902

Tierrasanta Branch Library

4985 La Cuesta Drive
San Diego, CA 92124-2601

Cresta Branch Library

105 Juanita Lane
El Cajon, CA 92021

Casa De Oro Branch Library

9805 Campo Road
Spring Valley, CA 91977

Eastlake Branch Library

1120 Eastlake Parkway
Chula Vista, CA 91913

Scoping Meetings Public Notice in Project Area Newspaper

Newspapers:	San Diego Union Tribune, East County Californian
Publication Cycle:	Daily & Weekly
Date of Notice:	September 8, 2003 and September 12, 2003
Area Served:	San Diego County, City of Santee, Jamacha Valley

**CALIFORNIA PUBLIC UTILITIES COMMISSION (CPUC)
Environmental Impact Report (EIR) for the
Miguel-Mission 230 kV #2 Project**

Scoping Meeting Agenda

Tuesday, September 16, 2003
Santee City Hall

- | | | |
|-------|--|--|
| I. | Sign-in | |
| II. | Welcome, Introductions, and
Agenda Summary | Chris Keller, View Point West |
| III. | Purpose of Scoping | Chris Keller, View Point West |
| IV. | Description of the Proposed Project | Tom Murphy,
Aspen Environmental Group |
| V. | CPUC Process and Schedule | Roosevelt Grant, CPUC |
| VI. | EIR Process | Tom Murphy,
Aspen Environmental Group |
| VII. | Comments from Attending Members of the Public and Agencies | |
| VIII. | Closing Comments | Chris Keller, View Point West |

(See reverse for additional information)

CALIFORNIA PUBLIC UTILITIES COMMISSION (CPUC)
Environmental Impact Report (EIR) for the
Miguel-Mission 230 kV #2 Project

Information Repositories

Serra Mesa Branch Library

3440 Sandrock Road
San Diego, CA 92123-2198

Santee Branch Library

9225 Carlton Hills Boulevard #17
Santee, CA 92071

El Cajon Branch Library

201 East Douglas
El Cajon, CA 92020

Spring Valley Branch Library

836 Kempton Street
Spring Valley, CA 91977

Benjamin Branch Library

5188 Zion Avenue
San Diego, CA 92120-2728

Lakeside Branch Library

9839 Vine Street
Lakeside, CA 92040

Rancho San Diego Branch Library

111555 Via Rancho San Diego
El Cajon, CA 92019

Bonita/Sunnyside Branch Library

5047 Central Avenue
Bonita, CA 91902

Tierrasanta Branch Library

4985 La Cuesta Drive
San Diego, CA 92124-2601

Cresta Branch Library

105 Juanita Lane
El Cajon, CA 92021

Casa De Oro Branch Library

9805 Campo Road
Spring Valley, CA 91977

Eastlake Branch Library

1120 Eastlake Parkway
Chula Vista, CA 91913

Scoping Meetings

Public Notice in Project Area Newspaper

Newspapers:	San Diego Union Tribune, East County Californian
Publication Cycle:	Daily and Weekly
Date of Notice:	September 8, 2003 and September 12, 2003
Area Served:	San Diego County, City of Santee, Jamacha Valley

SDG&E's Proposed
Miguel-Mission 230 kV #2
Transmission Line Project



CPUC
Scoping Meeting
for preparation of a
Draft EIR

September 15, 2003 September 16, 2003

Meeting Participants &
Agenda

- **Introduction of Speakers; Agenda Summary**
(Chris Keller, View Point West)
- **Purpose of Scoping** *(Chris Keller)*
- **Description of Proposed Project** *(Tom Murphy)*
- **CPUC Process and Schedule**
(Roosevelt Grant, CPUC)
- **EIR Process** *(Tom Murphy)*
- **Comments from the Public and Agencies**
- **Where to send additional Scoping Comments**

The Purpose of Scoping

- To inform the public and responsible agencies about an upcoming project for which an EIR will be prepared
- To inform the public about the environmental review process
- To solicit input regarding the potential alternatives to the proposed project and the appropriate scope of issues to be studied in the EIR
- To identify issues of concern and areas of potential controversy
- Scoping Report will be prepared and distributed to repositories, and placed on project website

Key Players and their Roles in the CEQA Process

- **California Public Utilities Commission (CPUC): Lead Agency under California Environmental Quality Act (CEQA)**
- **San Diego Gas & Electric Company (SDG&E): Applicant**
- **Aspen Environmental Group: Environmental contractor for CPUC**

What is the Proposed Project?

The major elements of SDG&E's Proposed Project include:

- Addition of a 35-mile single circuit 230 kV line between Miguel and Mission Substations, including replacement or modification of existing 138 kV tower structures
- Relocation of existing 69 kV/138 kV circuit onto new poles within the existing SDG&E ROW between Miguel Substation and Fanita Junction (24-miles)
- Modifications to the Miguel and Mission Substations to accommodate the new 230 kV circuit.

Where is the Proposed Project?

The Project would be located entirely in San Diego County within SDG&E's ROW between Miguel and Mission Substations. The ROW includes portions of:

- City of San Diego
- City of Santee
- Marine Corps Air Station
- Portions of Unincorporated San Diego County

Need for the Proposed Miguel-Mission Project

According to SDG&E, the proposed project is needed to:

- Compliance with AB 970 – Reduction or removal of constraints on the existing transmission system, net economic benefit of relieving constraints.
- Reliability Benefits associated with Operation of the Regional Grid

CPUC Review Process

The CPUC has two parallel review processes for this SDG&E Application for a Certificate of Public Convenience & Necessity (CPCN):

- General Proceeding (Application # A.02-07-022)
- Environmental Review (the CEQA process)

CPUC Tentative Review Schedule

General Proceeding	Environmental Review
Application filed by SDG&E: September 30, 2002	SDG&E's Proponent's Environmental Assessment: <i>Filed July 12, 2002</i>
First Pre-Hearing Conference: <i>January 10, 2003</i>	Notice of Preparation for EIR: <i>Mailed September 5, 2003</i>
Scoping Memo for General Proceeding: <i>expected Feb. 2003</i>	Public Scoping for EIR: October 5, 2003
Testimony Exchanged: <i>October-November 2003</i>	Draft EIR: <i>January-February 2004</i> • 45 Day Comment Period • Public Consultation
Evidentiary Hearings: <i>December 2003</i>	Final EIR: <i>May 2004</i>
ALJ's Proposed Decision: <i>early to mid-2004</i>	EIR Certified by CPUC: <i>June 2004</i>

General Proceeding for Certificate of Public Convenience and Necessity (CPCN)

Led by:

- Assigned Commissioner Loretta M. Lynch and Administrative Law Judge Peter Allen

Scope (defined by Public Utilities Code Section 1002):

- Determine need for the project (facilities are necessary to promote the safety, health, comfort, and convenience of the public)
- Consider community values, recreational and park areas, historic and aesthetic values.
- Review environmental impacts as required by the California Environmental Quality Act (CEQA)

Environmental Review

CPUC is the “Lead Agency” under CEQA for conducting the environmental review and preparing the EIR.

Objectives:

- Assess potential impacts of the proposed project and the alternatives
- Identify ways to avoid or reduce impacts, including examination of alternatives and mitigation measures

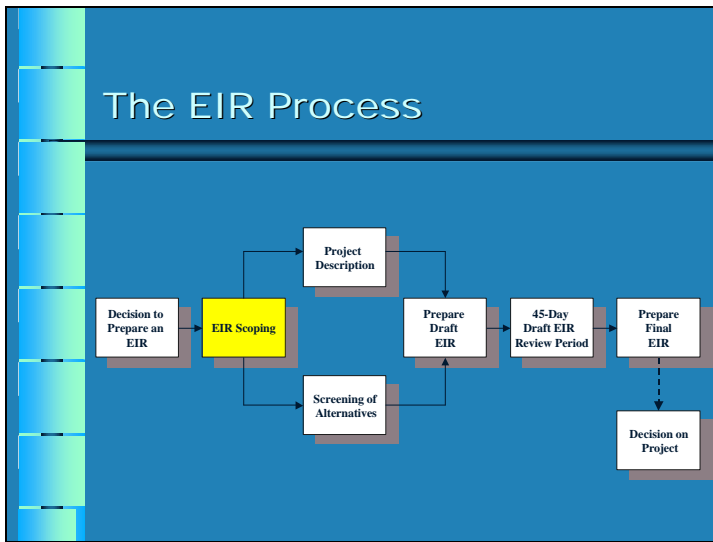
The Contents & Purpose of an EIR

Contents:

- Describe the environmental setting of the project area
- Disclose the potential environmental impacts of the project and alternatives
- Propose measures to reduce or avoid significant environmental impacts (mitigation measures)

Purpose:

- Provide technically sound information for decision-makers to consider in evaluating the proposed project



- ### Examples of Environmental Issue Areas
- Aesthetics
 - Air Quality
 - Biological Resources
 - Cultural Resources
 - Geology & Soils
 - Hazards
 - Hydrology & Water Quality
 - Land Use
 - Noise
 - Public Services
 - Recreation
 - Transportation & Traffic
 - Utilities

After EIR Completion

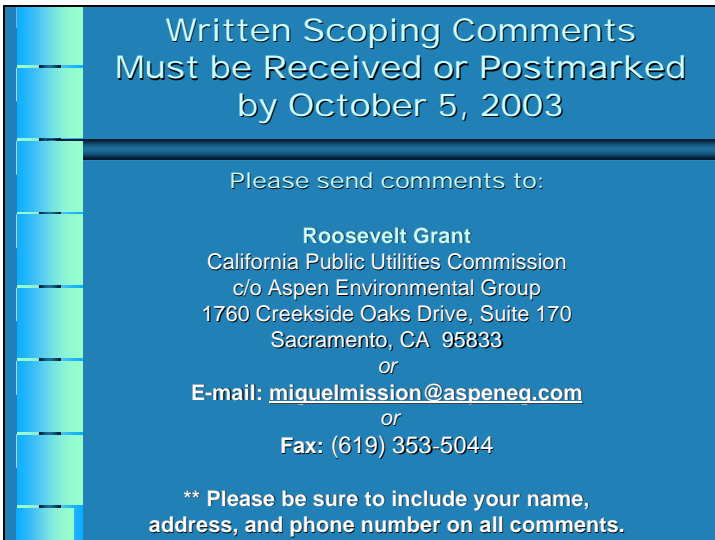
- Commission vote on Proposed Decision may occur in early to mid-2004
- EIR is referenced in the Decision
- If the project or an alternative is approved, the Decision will require monitoring of adopted mitigation measures and definition of mitigation monitoring procedures.



Clarifying Questions



EIR Scoping Comments



Written Scoping Comments
Must be Received or Postmarked
by October 5, 2003

Please send comments to:

Roosevelt Grant
California Public Utilities Commission
c/o Aspen Environmental Group
1760 Creekside Oaks Drive, Suite 170
Sacramento, CA 95833
or
E-mail: miguelfmission@aspeneq.com
or
Fax: (619) 353-5044

** Please be sure to include your name,
address, and phone number on all comments.

For More Information:

- Check our Internet website:

www.cpuc.ca.gov/Environment/info/aspern/miguel_mission/miguelmission.htm

- Information Repositories: 12 area libraries have project information
- E-mail us at: miguelmission@aspeneq.com
- Call the Project Information Line:
(619) 353-5044 (voice or fax)



Additional Questions?
