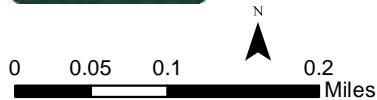




Sheet 2



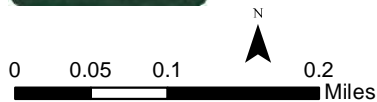
- MP Milepost
- TE/VS 115 kV Double Circuit Overhead Transmission Line (Proposed)
- ▭ Municipal Boundary

DRAFT 3/11
Figure Ap. 1b-2

Source: TNHC, Riverside County, Aspen



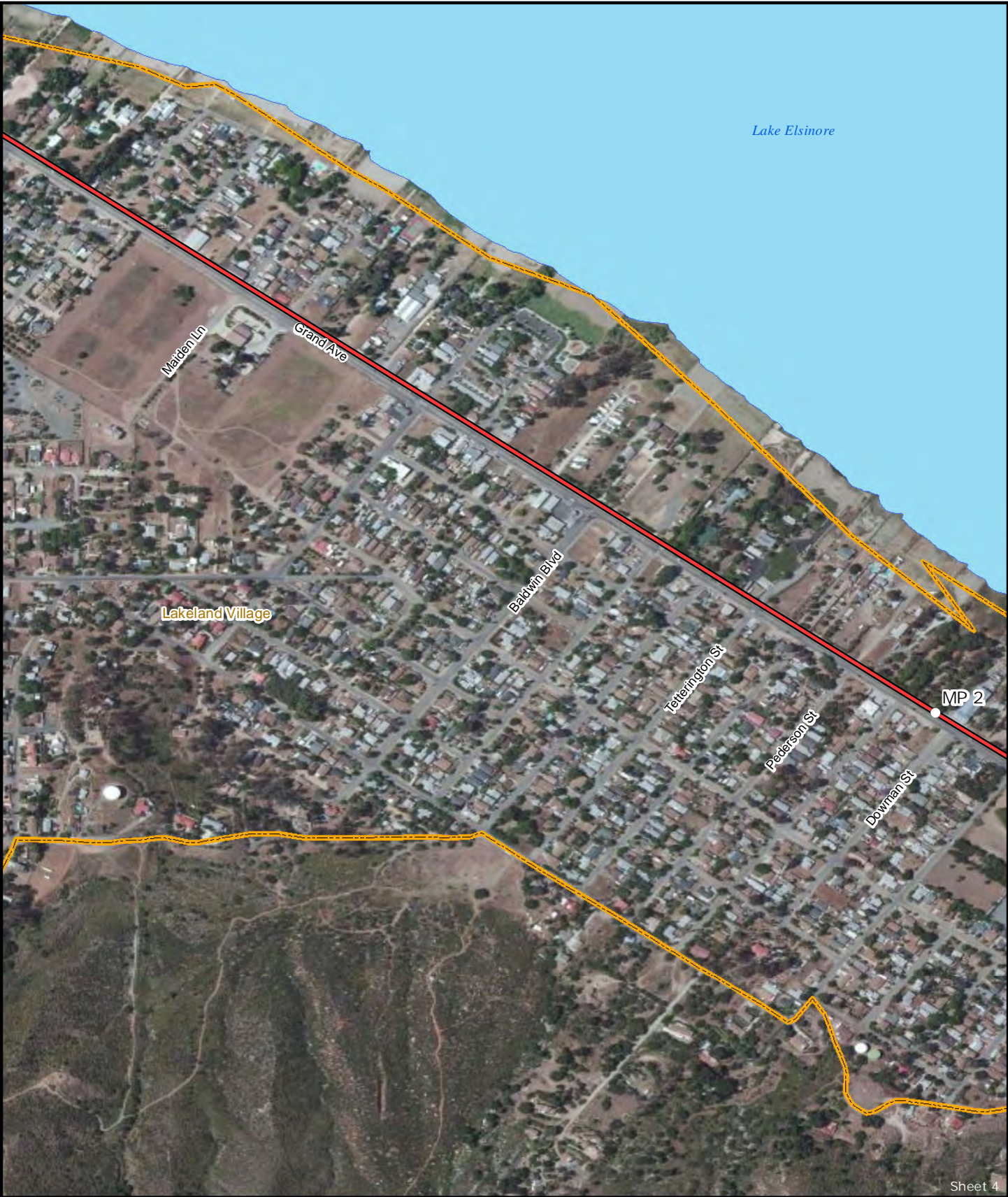
Sheet 3



- MP Milepost
- TE/VS 115 kV Double Circuit Overhead Transmission Line (Proposed)
- ▭ Municipal Boundary

DRAFT 3/11
Figure Ap. 1b-3

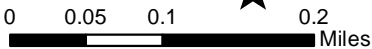
Source: TNHC, Riverside County, Aspen



Sheet 4



- MP Milepost
- TE/VS 115 kV Double Circuit Overhead Transmission Line (Proposed)
- ▭ Municipal Boundary

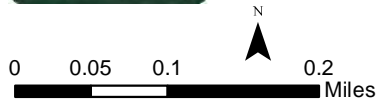


DRAFT 3/11
Figure Ap. 1b-4

Source: TNHC, Riverside County, Aspen



Sheet 5



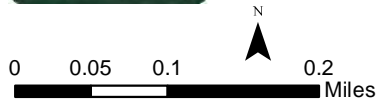
- MP Milepost
- TE/VS 115 kV Double Circuit Overhead Transmission Line (Proposed)
- ▭ Municipal Boundary

DRAFT 3/11
Figure Ap. 1b-5

Source: TNHC, Riverside County, Aspen



Sheet 6



- MP Milepost
- TE/VS 115 kV Double Circuit Overhead Transmission Line (Proposed)
- ▭ Municipal Boundary

DRAFT 3/11
Figure Ap. 1b-6

Source: TNHC, Riverside County, Aspen



Sheet 7



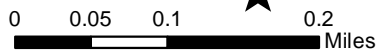
- MP Milepost
- TE/VS 115 kV Double Circuit Overhead Transmission Line (Proposed)
- ▭ Municipal Boundary

DRAFT 3/11
Figure Ap. 1b-7

Source: TNHC, Riverside County, Aspen



Sheet 8



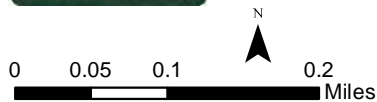
- MP Milepost
- TE/VS 115 kV Single Circuit Overhead Transmission Line (Proposed)
- TE/VS 115 kV Double Circuit Overhead Transmission Line (Proposed)
- ▭ Municipal Boundary

DRAFT 3/11
Figure Ap.1b-8

Source: TNHC, Riverside County, Aspen



Sheet 9



- MP Milepost
- TE/VS 115 kV Single Circuit Overhead Transmission Line (Proposed)
- TE/VS 115 kV Double Circuit Overhead Transmission Line (Proposed)
- ▭ Municipal Boundary

DRAFT 3/11
Figure Ap.1b-9

Source: TNHC, Riverside County, Aspen



- MP Milepost
- TE/VS 115 kV Single Circuit Overhead Transmission Line (Proposed)
- ▭ Municipal Boundary

DRAFT 3/11
Figure Ap. 1b-10

Source: TNHC, Riverside County, Aspen



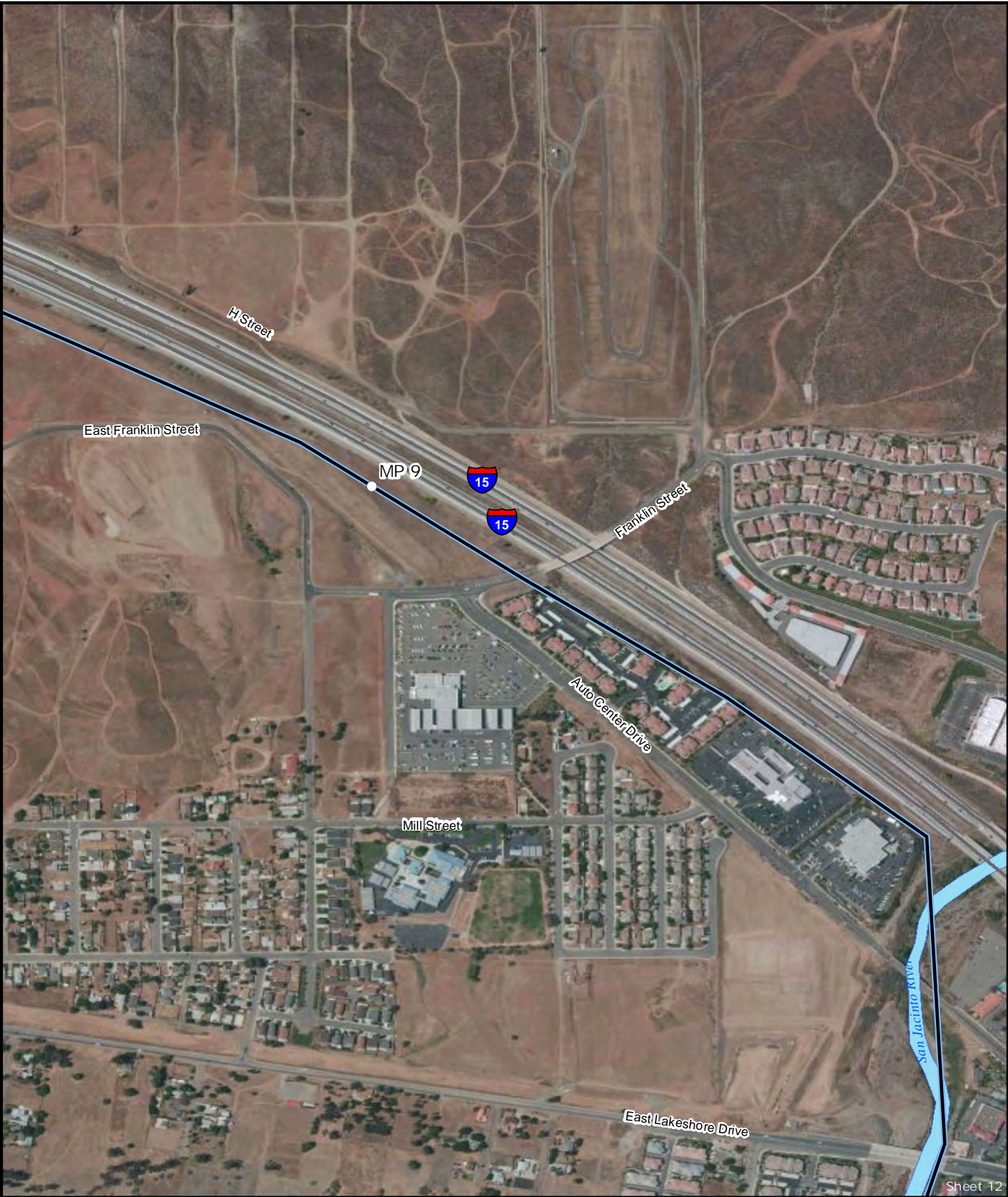
Sheet 11



- MP Milepost
- TE/VS 115 kV Single Circuit Overhead Transmission Line (Proposed)
- ▭ Municipal Boundary

DRAFT 3/11
Figure Ap. 1b-11

Source: TNHC, Riverside County, Aspen



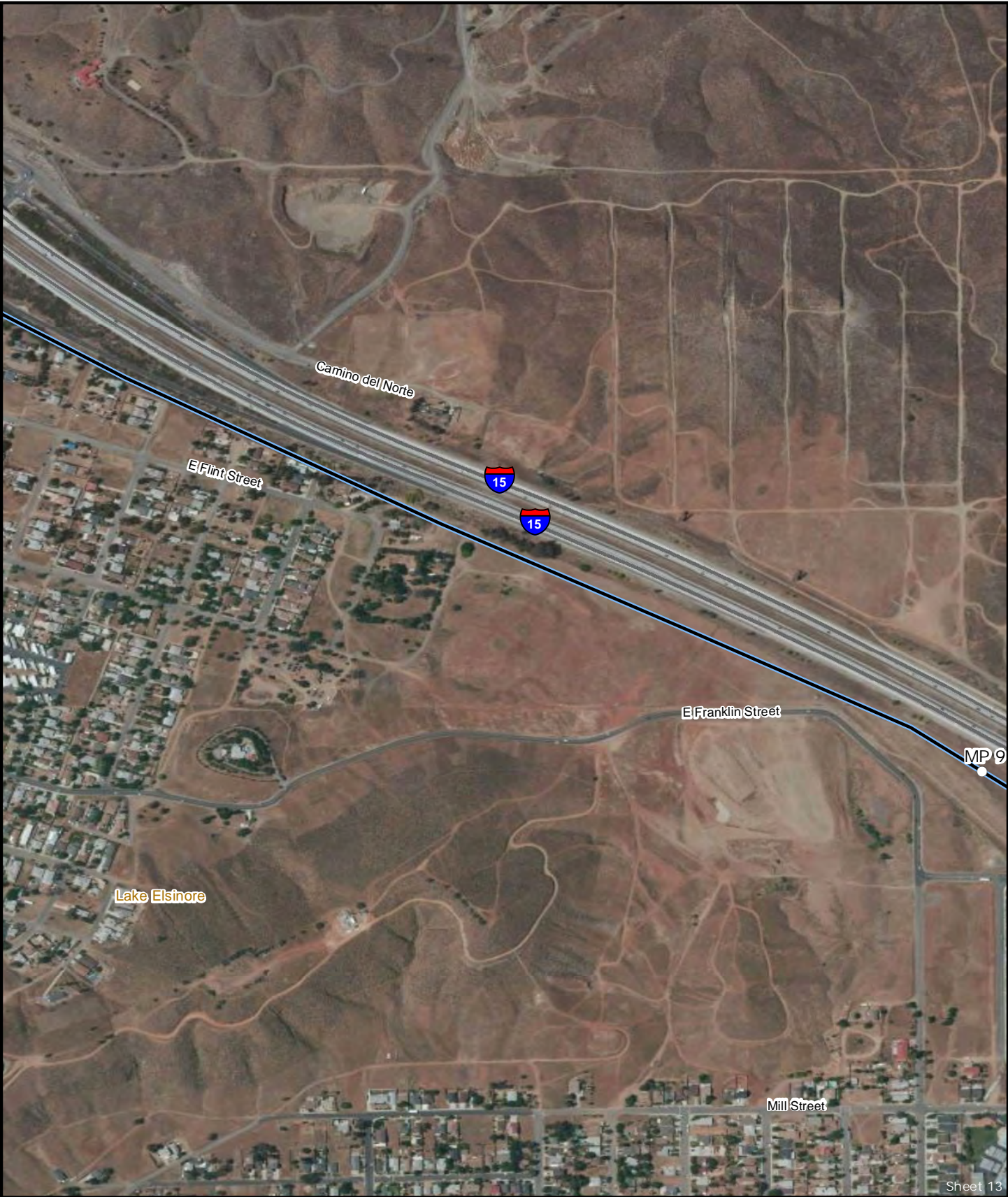
Sheet 12



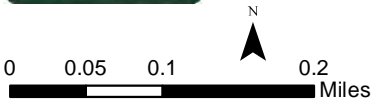
- MP Milepost
- TE/VS 115 kV Single Circuit Overhead Transmission Line (Proposed)

DRAFT 3/11
Figure Ap. 1b-12

Source: TNHC, Riverside County, Aspen



Sheet 13



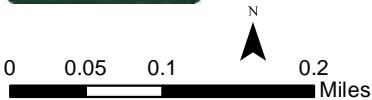
- MP Milepost
- TE/VS 115 kV Single Circuit Overhead Transmission Line (Proposed)

DRAFT 3/11
Figure Ap. 1b-13

Source: TNHC, Riverside County, Aspen



Sheet 14



- MP Milepost
- TE/VS 115 kV Single Circuit Overhead Transmission Line (Proposed)

DRAFT 3/11
Figure Ap. 1b-14

Source: TNHC, Riverside County, Aspen