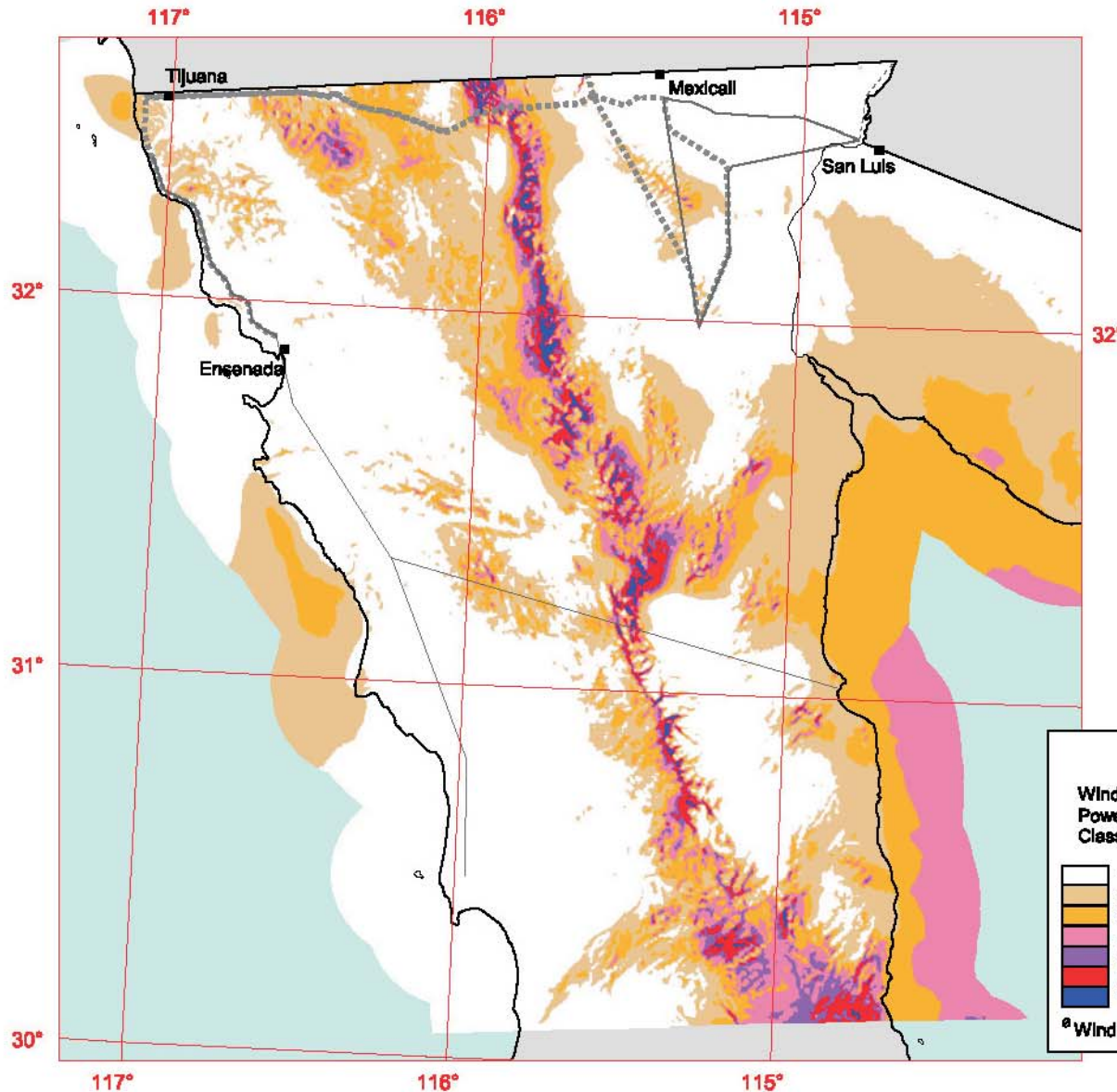


Baja California Norte

Border Region

50 m Wind Power



Transmission Line*
 Voltage (kV)

- 69
- 115 - 161
- 230
- - 345

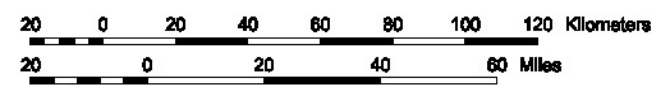
* Source: POWERmap, ©2003
 Platts, a Division of the McGraw-Hill Companies

The annual wind power estimates for this map were produced by TrueWind Solutions using their Mesomap system and historical weather data. It has been validated with available surface data by NREL and wind energy meteorological consultants.

Wind Power Classification

Wind Power Class	Resource Potential	Wind Power Density at 50 m W/m ²	Wind Speed ^a at 50 m m/s	Wind Speed ^a at 50 m mph
1	Poor	0 - 200	0.0 - 5.6	0.0 - 12.5
2	Marginal	200 - 300	5.6 - 6.4	12.5 - 14.3
3	Fair	300 - 400	6.4 - 7.0	14.3 - 15.7
4	Good	400 - 500	7.0 - 7.5	15.7 - 16.8
5	Excellent	500 - 600	7.5 - 8.0	16.8 - 17.9
6	Outstanding	600 - 800	8.0 - 8.8	17.9 - 19.7
7	Superb	> 800	> 8.8	> 19.7

^a Wind speeds are based on a Weibull k of 2.0 at sea level.



Sunrise Powerlink Project

Figure B-49
 Indirect Action:
 Border Region Wind Power