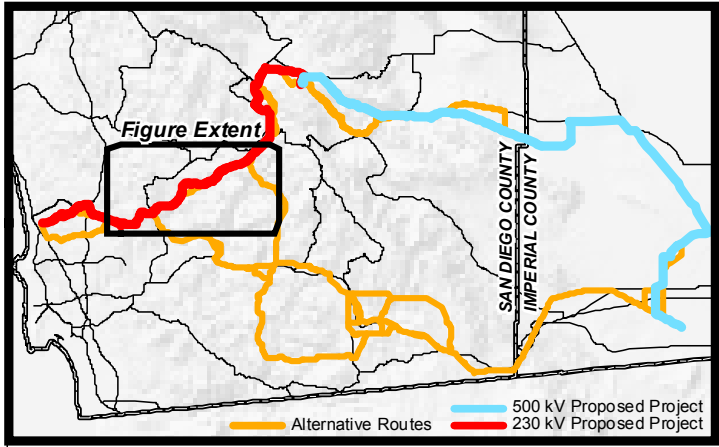


The CNF Existing 69 kV Route Alternative would follow the existing 69 kV ROW through Cleveland National Forest and the existing 69 kV line would not need to be relocated.



	Proposed Project Double-circuit 230 kV Overhead Proposed Project Double-circuit 230 kV Overhead Parallel to Existing 69 kV Line Proposed Project 230 kV Double-circuit Underground Proposed Project Single-circuit 230 kV with Relocated 138 kV on Shared Structures, Parallel to Existing 230/69 kV Line. New 230 kV Circuit on North/East Side, Relocated 138 kV Circuit on South/West Side of Towers. Existing H-frame Towers Removed. Sycamore Canyon - Elliot Substation Reconductor 138 kV Substation 230 kV Substation 500 kV / 230 kV Substation Overhead-Underground Proposed Project Transition Structures Overhead-Underground Alternative Transition Structures	Existing 69 kV Transmission Line Existing 138 kV Transmission Line Existing 230 kV Transmission Line CNF Existing 69 kV Route Alternative Oak Hollow Road Alternative, Overhead Portion Oak Hollow Road Alternative, Underground Portion Chuck Wagon Road Alternative, Overhead Portion Chuck Wagon Road Alternative, Underground Portion Pomerado Road to Miramar Area North Alternative, Underground Portion San Vicente Road Transition Alternative Interstate 8 Alternative, Overhead Portion	Route D Alternative (North of I-8) Central South Substation Alternative Transmission Line Milepost Major Road Municipality Unincorporated Town Bureau of Land Management Land State Land Department of Defense Land U.S. Forest Service Land	Tribal Land Recreation Areas Recreation Areas Recreation Areas

Sunrise Powerlink Project

Figure C-4
Inland Valley Link
Alternatives Retained