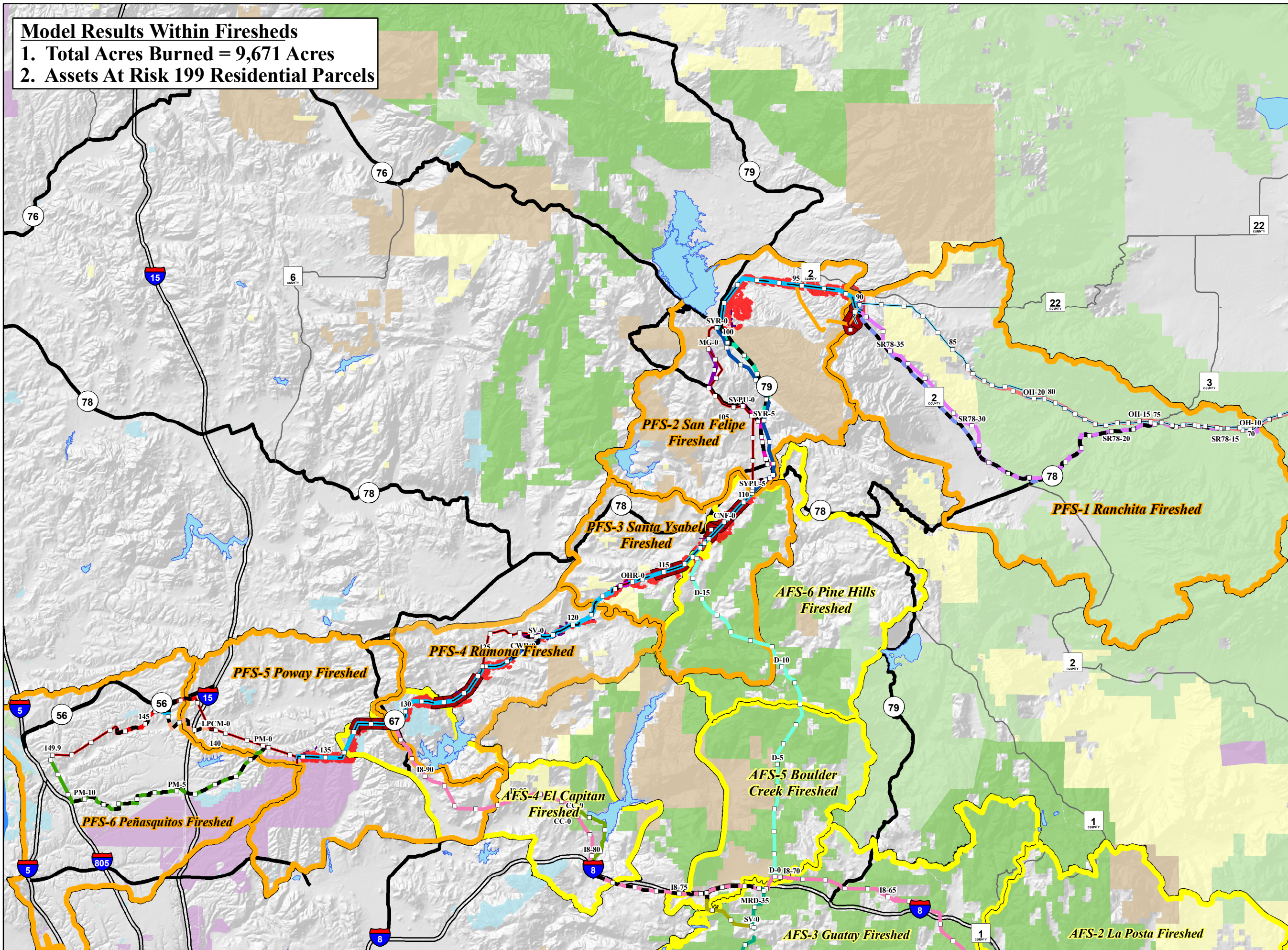


**Model Results Within Firesheds**  
**1. Total Acres Burned = 9,671 Acres**  
**2. Assets At Risk 199 Residential Parcels**



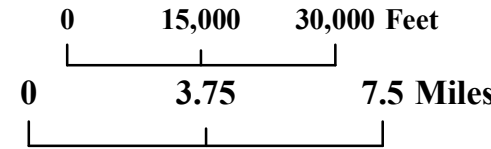
**Proposed Project and Alternative Routes**

- Environmentally Superior Northern Route, Overhead Portion
- Proposed Project Overhead 500kV
- Proposed Project Overhead 230kV
- Proposed Project Underground 230kV
- Modified Route D Alternative
- Star Valley Option, Overhead Portion
- Star Valley Option, Underground Portion
- Oak Hollow Road Alternative, Overhead Portion
- Overhead 500 kV ABDSP within Existing ROW
- Partial Underground ABDSP SR78 to S2 Alternative, Overhead Portion
- Partial Underground ABDSP SR78 to S2 Alternative, Underground Portion
- All Underground Option, Overhead Portion
- All Underground Option, Underground Portion
- Pomerado Road to Miramar Area North Alternative, Overhead Portion
- Pomerado Road to Miramar Area North Alternative, Underground Portion
- Route D Alternative
- San Vicente Road Transition Alternative, Overhead Portion
- San Vicente Road Transition Alternative, Underground Portion
- Santa Ysabel Existing ROW Alternative
- Santa Ysabel Partial Underground Alternative, Overhead Portion
- Santa Ysabel Partial Underground Alternative, Underground Portion
- Santa Ysabel SR79 All Underground Alternative, Overhead Portion
- Santa Ysabel SR79 All Underground Alternative, Underground Portion
- Top of the World Substation Alternative
- Black Mountain to Park Village Road Underground Alternative
- Central South Substation Alternative
- CNF Existing 69 kV Route Alternative
- Buckman Springs Underground Option
- Campo North Option
- Chocolate Canyon Option
- Interstate 8 Alternative, Overhead Portion
- South Buckman Springs Option
- Interstate 8 Alternative, Underground Portion
- West Buckman Springs Option
- SDG&E Mesa Grande Alternative

Milepost  
 Road  
 Interstate

**Jurisdictional Land Ownership**

- U.S. Forest Service Land
- Bureau of Land Management Land
- Department of Defense Land
- State Land
- State Park
- Tribal Land



**Sunrise Powerlink Project**  
**Figure Ap.3E-5**  
**Final Environmentally Superior**  
**Northern Route, Overhead Portion**  
**Fire Behavior Trend Model**  
**2 Burn Periods - Normal Weather**