

**SCE VALLEY SOUTH SUBTRANSMISSION PROJECT**

**Date:** January 9, 2020  
**To:** Eric Chiang, Project Manager, CPUC  
**From:** Vida Strong, Aspen Project Manager  
**Subject:** Monitoring Report #18: December 15, 2019 to January 4, 2020

**Introduction**

This report provides a summary of the construction and compliance activities associated with Southern California Edison’s (SCE) Valley South Subtransmission Project (VSSP). Project components include:

- Installation and upgrades of the 115 kV subtransmission line
- Modification of some existing 12 kV and 33 kV distribution facilities
- Telecommunication equipment installation and upgrades
- Installation of new components at the Valley Substation

**CPUC Environmental Monitor (EM):** No monitoring was conducted during the subject reporting period due to the limited construction activities over the holidays.

**CPUC Notices to Proceed (NTPs)**

Table 1 summarizes the NTPs issued for VSSP construction. No additional NTPs are required.

**Table 1 - NTPs**

NTP #	Date Requested	Date Issued	Description
NTP #1	12/11/18	01/04/19	Use of 2 Material Yards and Vegetation Management at six locations along the right-of-way.
NTP #2	02/26/19	03/25/19	Construction of Project components not subject to final engineering due to use of required insulated conductor in high fire hazard areas, Segments 1 and 2.
NTP #3	05/16/19	06/07/19	Poles subject to final engineering due to required use of insulated conductor in high fire hazard areas.

**Construction & Compliance**

To date, all pre-compliance materials associated with NTPs #1, #2, and #3 that have been submitted have been approved. Construction activities associated with NTP #1 began on February 4, 2019. Construction activities associated with NTP #2 began on May 6, 2019. Construction activities associated with NTP #3 began on June 18, 2019.

A summary of construction and compliance activities for the subject reporting period is provided below.

### **Summary of Construction Activity**

1. Wilson Construction and their subcontractors, Cattrac and KV Structures, are currently using the Valley Substation Contractor Yard for mobile office headquarters and equipment and material storage. Activities associated with the yard included delivery of materials including rebar cages, tubular steel poles (TSPs), and conduit.
2. BMP inspections and maintenance occurred at TSP foundation locations in Segment 1.
3. Cattrac continued cutting asphalt, trenching, and installing and encasing conduit in the duct bank trench between Vault 1 and Vault 2B and between Vault 2B and Vault 3 for the southern underground section on Leon Road (Construction Areas UNK207 through UNK222). Completed sections were repaved. No Cattrac construction activities occurred on December 23 through 26, 31, and January 1.
4. Wilson construction activities on Segment 1 included: Digging and setting poles at Construction Areas UNK01 through UNK10; setting TSPs at Construction Areas UNK02 and UNK68; installing step bolts at Construction Areas UNK115, UNK125, UNK207, and UNK247; and lowering arms at Construction Area UNK156. No Wilson construction activities occurred from December 22 through January 4.
5. KV Structures construction activities included completing the foundation at Construction Area UNK69 and repairing the sidewalks at Construction Area UNK189 through UNK204. No KV Structures construction activities occurred from December 22 through January 4. KV Structures has demobilized from the project until the last remaining foundation is available for construction.
6. Wilson construction activities on Segment 2 included lowering distribution arms at poles 4401991E, 4401992E, 4401997E, 4402009E, 4402025E, 4402064E and 4402067E.

### **Environmental Compliance**

1. Biological and paleontological monitoring occurred during construction activities.
2. Traffic control was in place on Leon Road during construction activities for the southern underground section on Segment 1.
3. There were no SCE self-reported incidents and one observation documented throughout the monitoring period for non-project related tree trimming.
4. As of the end of the monitoring period, there are no active nests associated with project activities.
5. There were no special-status species observed or identified at locations associated with construction activities during the subject monitoring period.
6. Several potential SKR burrows were identified near Construction Area UNK69 during the subject monitoring period. An Environmentally Sensitive Area (ESA) buffer of 10 feet was established around each potential burrow for avoidance during construction activities.
7. Three ephemeral pools suitable for fairy shrimp were identified on Segment 1 (see Photo 1). ESA staking was established around each pool for avoidance during construction activities.
8. There were no SCE self-reported SWPPP maintenance items associated with construction activities reported throughout the monitoring period.
9. There were no reportable (> 1 gallon) and one non-reportable (< 1 gallon) spill associated with construction activities during the monitoring period. On December 23, a hydraulic hose broke on staged equipment within the staging area South of Construction Area UNK222 (see Photo 2). The majority of the fluid was caught in the drip pan under the equipment and a small amount of hydraulic fluid sprayed onto the gravel in the staging area. The gravel affected by the hydraulic fluid was shoveled and placed into a poly bag to be transported to the Valley Substation Contractor Yard to be disposed of at an approved facility.

## Temporary Extra Workspaces (TEWS) and Minor Project Changes (MPCs)

No MPC or TEWS were approved during the subject monitoring period. Table 2 summarizes the TEWS and MPCs for the Valley South Subtransmission Project to date.

**Table 2 – TEWS & MPCs**  
(Updated 01/09/20)

MPC/TEWS No.	Description	Status
<b>MPCs</b>		
1	Leon Road Realignment	Issued by CPUC 01/11/19
2	Laydown area for wood pole storage south of Valley Substation Yard.	Issued by CPUC 07/10/19
3	Additional work areas and access roads on Segment 1 and Segment 2	Issued by CPUC 08/30/19
4	Additional work area adjacent to pole 4402074E on Segment 2.	Issued by CPUC 10/29/19
5	Additional work areas and access roads on Segment 1	Issued by CPUC 12/12/19
6	Additional overland travel access on Segment 1	Submitted to Aspen 1/6/20. Questions sent to SCE on 1/7/20. SCE response provided 1/09/20.
<b>TEWS</b>		
1	Use of existing access road at Construction Area UNK241 through UNK243	Issued by Aspen 09/12/19

## CPUC Compliance Incidents, Project Memoranda (PMs) and Non-Compliance Reports (NCRs)

No Incident Reports, PMs, or NCRs were issued by the CPUC EM during the subject reporting period. Table 3 summarizes the CPUC Incidents, PMs, and NCRs issued to date.

**Table 3 - CPUC Incidents, Project Memoranda, and Non-Compliance Reports**  
(Updated 01/09/20)

Incident/PM/NCR	Regulatory Requirement	Date Issued	Segment	Description
Level 1 Incident	NTP requirement	08-20-19	Segment 1	Wood poles staged at Construction Areas not released for construction.
Level 1 Incident	SWPPP/BIO-2/AES-1	09-25-19	Segment 1	Construction equipment without secondary containment, staging area without screening, pipes without capping, and an open trench with gaps in covering.

## PROJECT PHOTOGRAPHS



Photo 1 – Ephemeral pool ESA marked for avoidance near pole 4401997E on Segment 1 (Photo courtesy of SCE) (December 17, 2019).

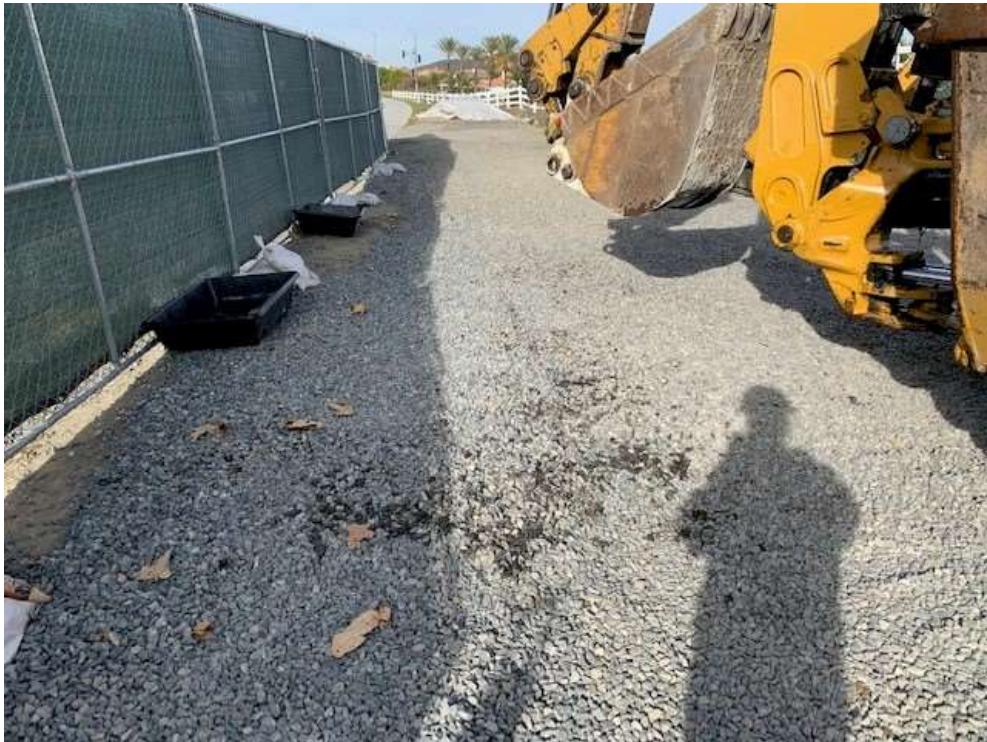


Photo 2 – Hydraulic fuel leak at staging area south of Construction Area UNK222 (Photo Courtesy of SCE) (December 23, 2019).