

Source: SDG&E, 2015f.

- Proposed Vine 69/12 kV Substation
- Existing Kettner Substation
- Transmission Work Area
- Jack-and-Bore Work Area
- Existing 12 kV Distribution Vault
- Proposed 12 kV Distribution Vault
- Proposed Optional 12 kV Distribution Vault
- Proposed Telecommunication Handhole
- Proposed 12 kV Distribution Pull Site
- Proposed Optional 12 kV Distribution Pull Site

- Existing Pole
- Install New TSP
- Replace Existing Pole with TSP
- Remove Existing Pole
- Remove Existing Stub Guy Pole
- Potential AT&T Interconnection Point
- Proposed Capacitor
- Proposed Switch

- Existing 69 kV Overhead
- Existing 69 kV Overhead to be Removed
- Proposed 69 kV Overhead
- Existing 12 kV Duct Bank
- Proposed 12 kV Underground
- Proposed Optional 12 kV Realignment
- Proposed 12 kV and Telecommunications Duct Bank
- Proposed Telecommunications Duct Bank

Note: Underground alignments area preliminary and will not be finalized until final engineering is complete.

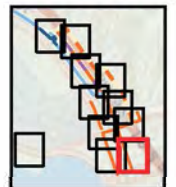


Figure B.1-3g: Detailed Project Components