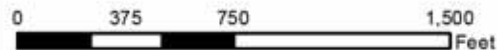


Sources: SCE 2014, USGS 2013

1:8,000



Transmission

- Currently Proposed New Tower Location
- ⊗ Existing Tower to be Modified
- ⊗ Existing Tower to be Removed
- Draft EIR/EIS Tower Location



- Subtransmission Line
- ▨ Substation Footprint
- - - Approx. Existing 220kV T/L Corridor

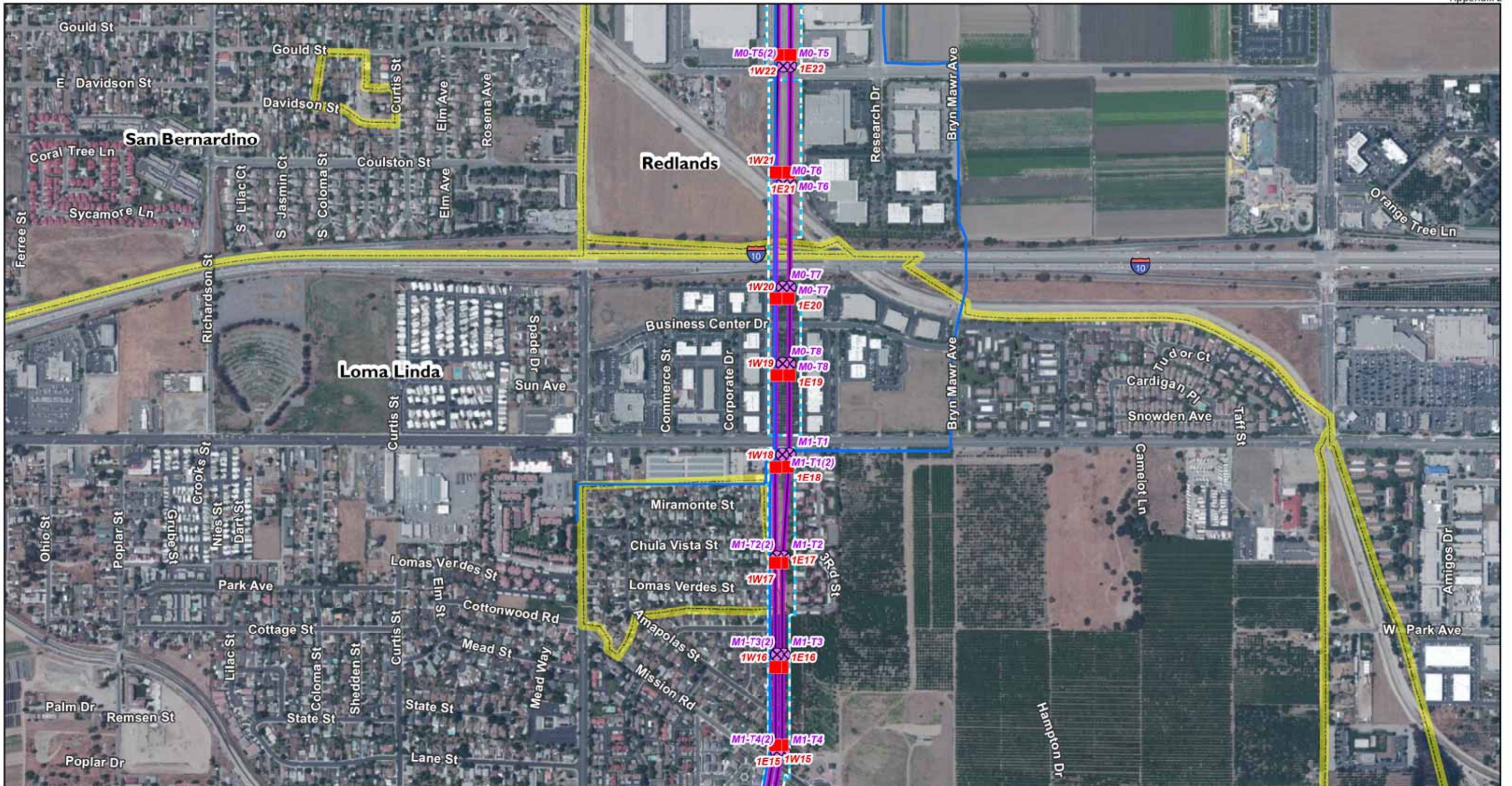
Proposed Transmission Line Segment

- Segment 1
- Incorporated City
- Land Jurisdiction

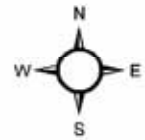


West of Devers Upgrade Project

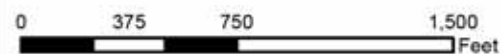
**AP.2-1
Detailed Maps**



Sources: SCE 2014, USGS 2013



1:8,000



Transmission

- Proposed New Tower
- ⊗ Existing Tower to be Removed
- Subtransmission Line
- Approx. Existing 220kV T/L Corridor

Proposed Transmission Line Segment

— Segment 1

Land Jurisdiction

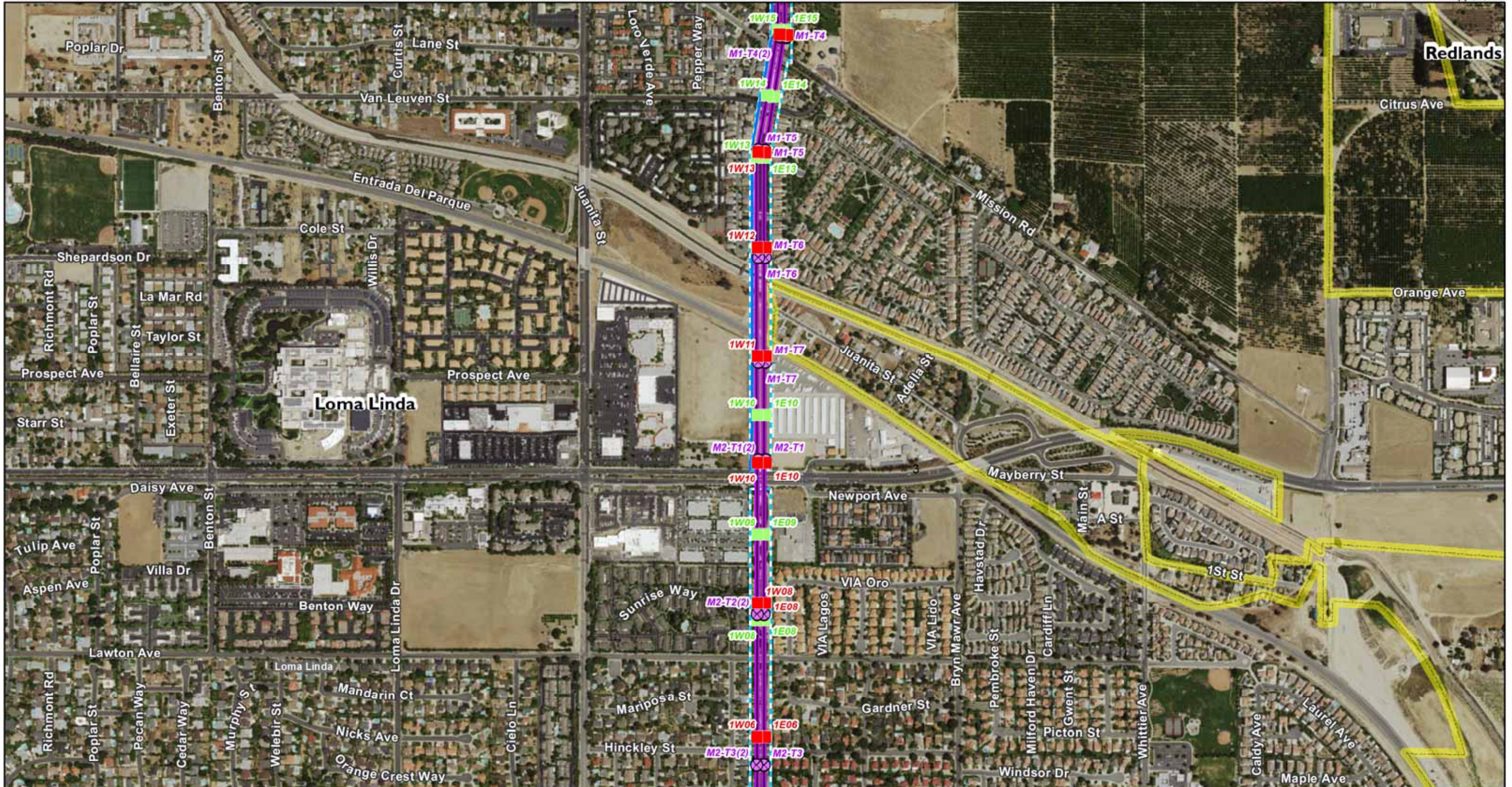
 Incorporated City



West of Devers Upgrade Project

AP.2-2
Detailed Maps

Page 2 of 29



Sources: SCE 2014, USGS 2013

1:8,000



Transmission

- Currently Proposed New Tower Location
- ⊗ Existing Tower to be Removed
- Draft EIR/EIS Tower Location

- Subtransmission Line
- Approx. Existing 220kV T/L Corridor

Proposed Transmission Line Segment

- Segment 1

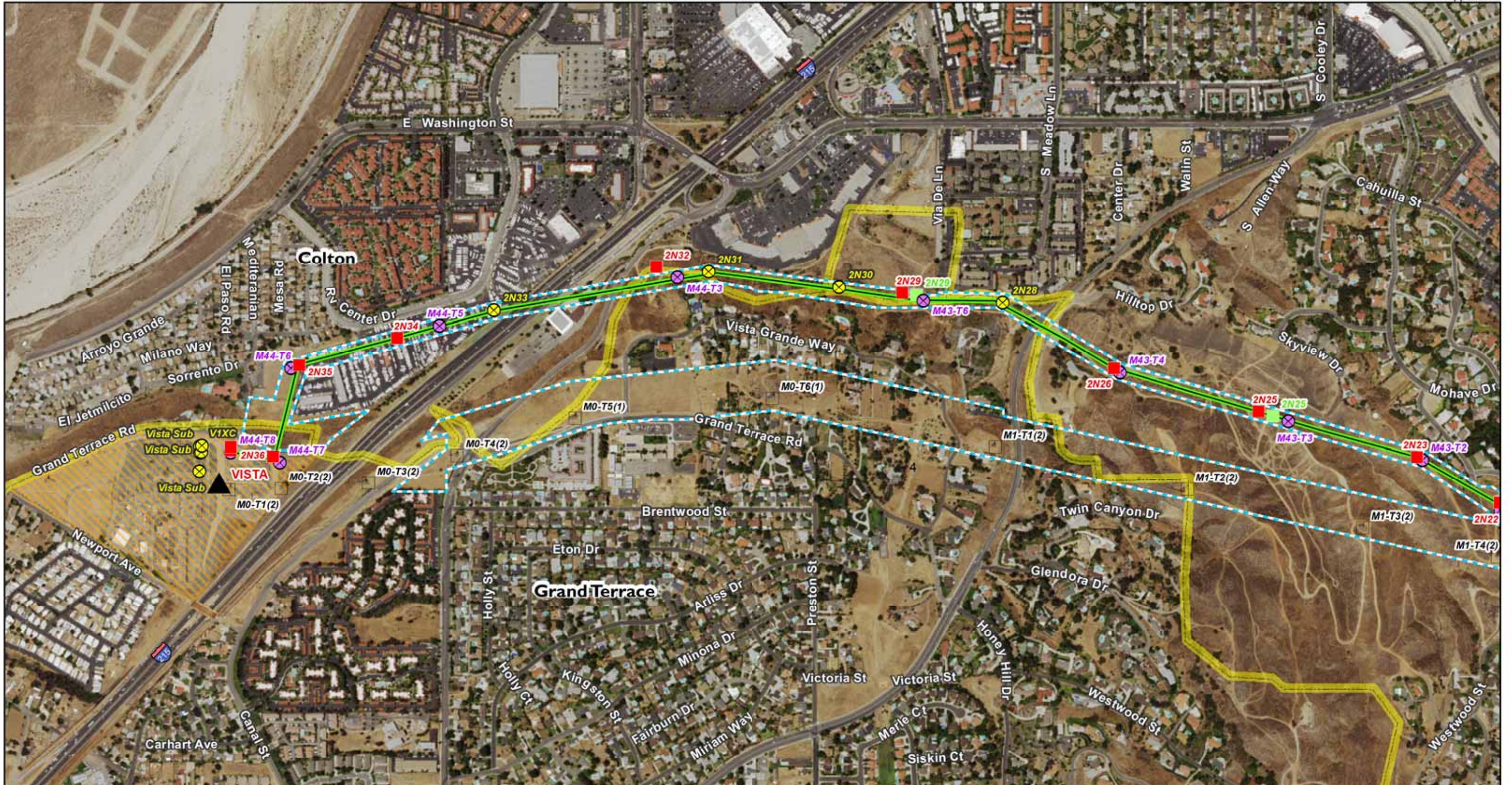
Land Jurisdiction

- Incorporated City



West of Devers Upgrade Project

AP.2-3
Detailed Maps



Aspen
Environmental Group

Sources: SCE 2014, USGS 2013

1:8,000

0 375 750 1,500 Feet

Transmission

- Currently Proposed New Tower Location
- ⊗ Existing Tower to be Modified
- ⊗ Existing Tower to be Removed
- Existing Tower (No Changes)

- ▲ Substation
- ▨ Substation Footprint
- ⋯ Approx. Existing 220kV T/L Corridor

Proposed Transmission Line Segment

- Segment 2

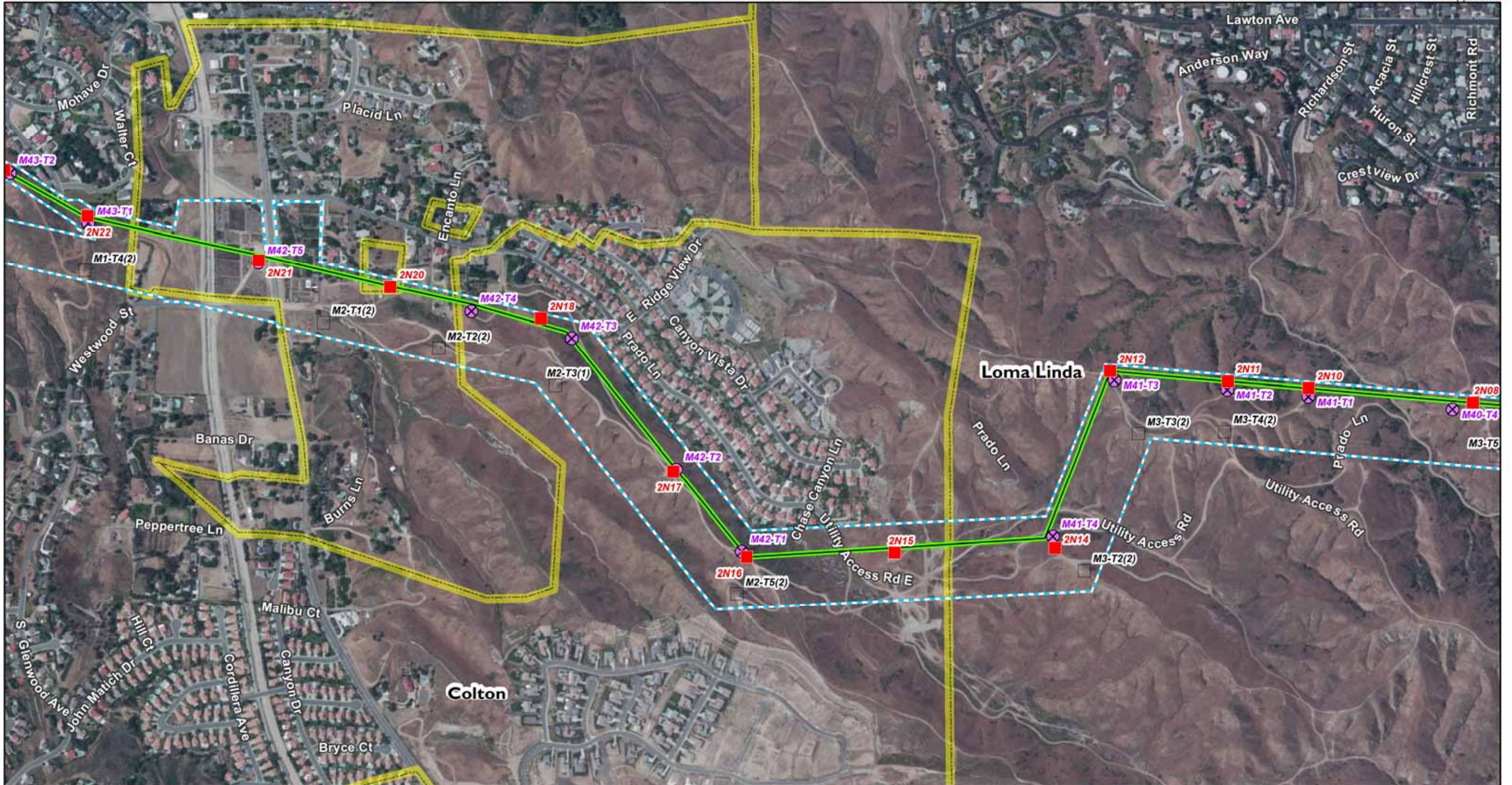
Land Jurisdiction

- ▭ Incorporated City

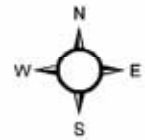


West of Devers Upgrade Project

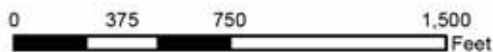
AP.2-4
Detailed Maps
Page 4 of 29



Sources: SCE 2014, USGS 2013



1:8,000



Transmission

- Proposed New Tower
- ⊗ Existing Tower to be Removed
- Existing Tower (No Changes)
- Approx. Existing 220kV T/L Corridor

Proposed Transmission Line Segment

— Segment 2

Land Jurisdiction

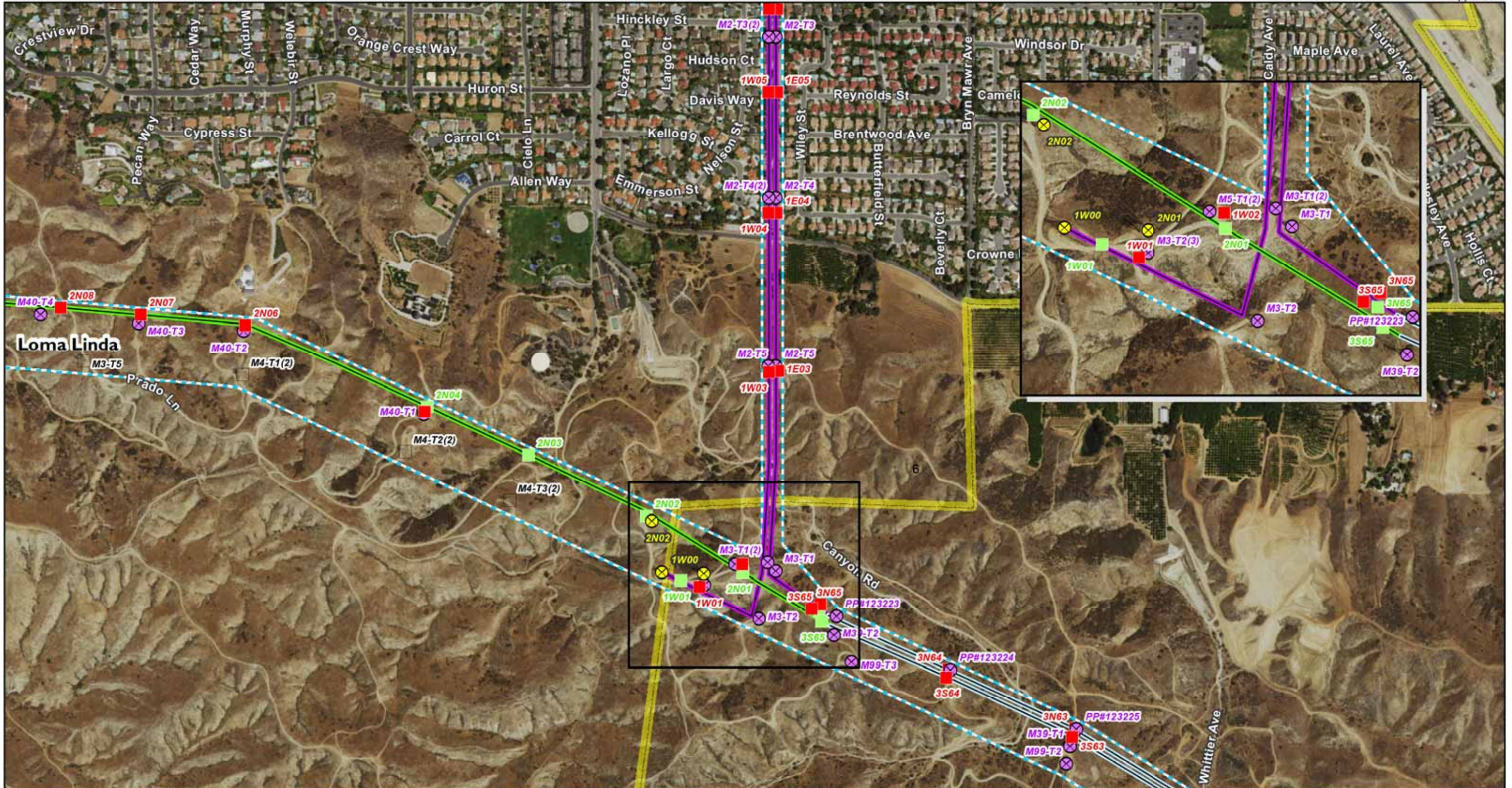
Incorporated City



West of Devers Upgrade Project

AP.2-5
Detailed Maps

Page 5 of 29



Aspen
Environmental Group

Sources: SCE 2014, USGS 2013

1:8,000

0 375 750 1,500 Feet

Transmission

- Currently Proposed New Tower Location
- ⊗ Existing Tower to be Modified
- ⊗ Existing Tower to be Removed
- Existing Tower (No Changes)
- Draft EIR/EIS Tower Location
- ⋯ Approx. Existing 220kV T/L Corridor

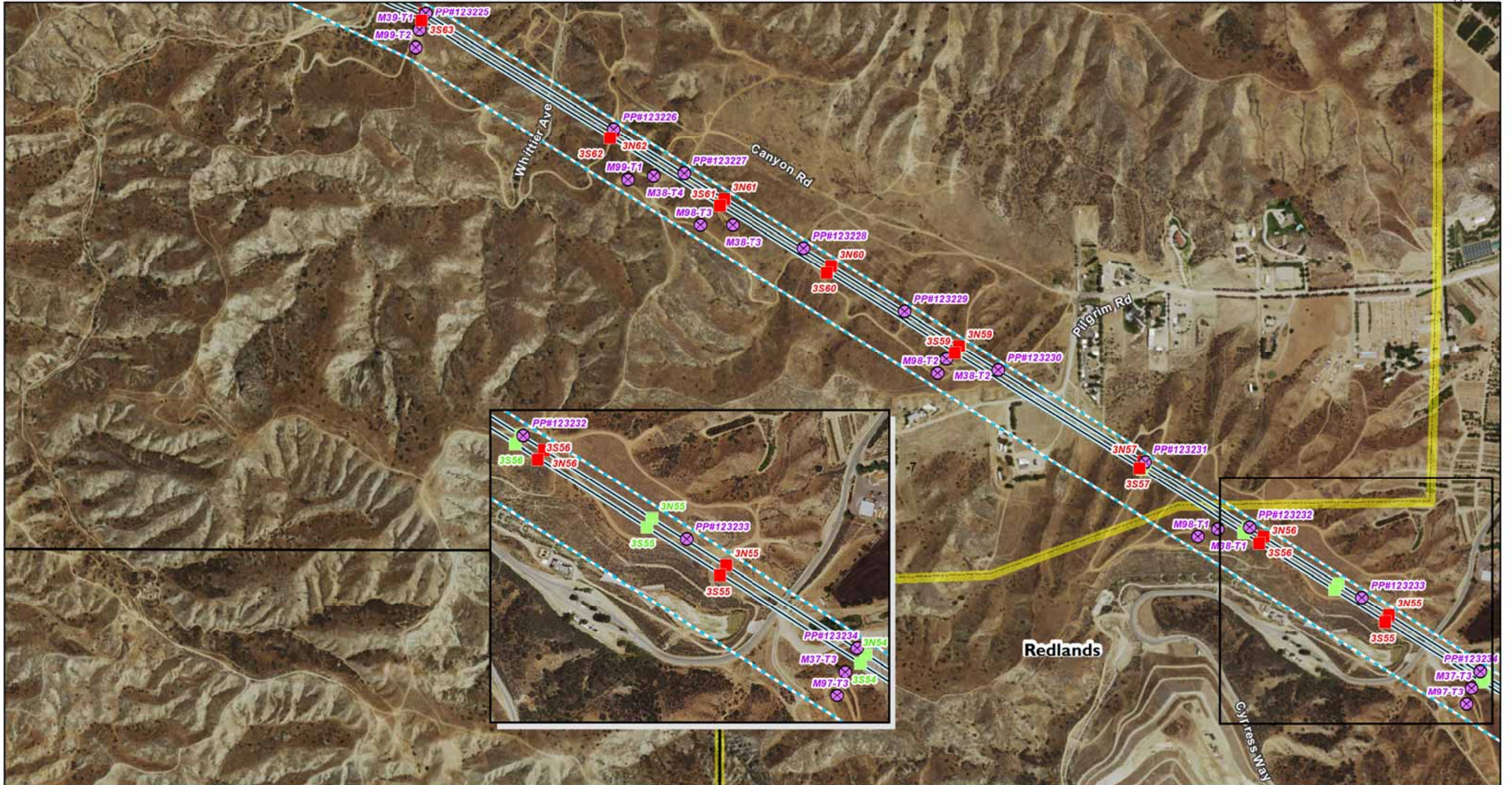
Land Jurisdiction

- ▭ Incorporated City

Proposed Transmission Line Segment

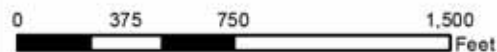
- Segment 1
- Segment 2
- Segment 3





Sources: SCE 2014, USGS 2013

1:8,000



Transmission

- Currently Proposed New Tower Location
- ⊗ Existing Tower to be Removed
- Draft EIR/EIS Tower Location
- ⋯ Approx. Existing 220kV T/L Corridor

Land Jurisdiction

- Incorporated City

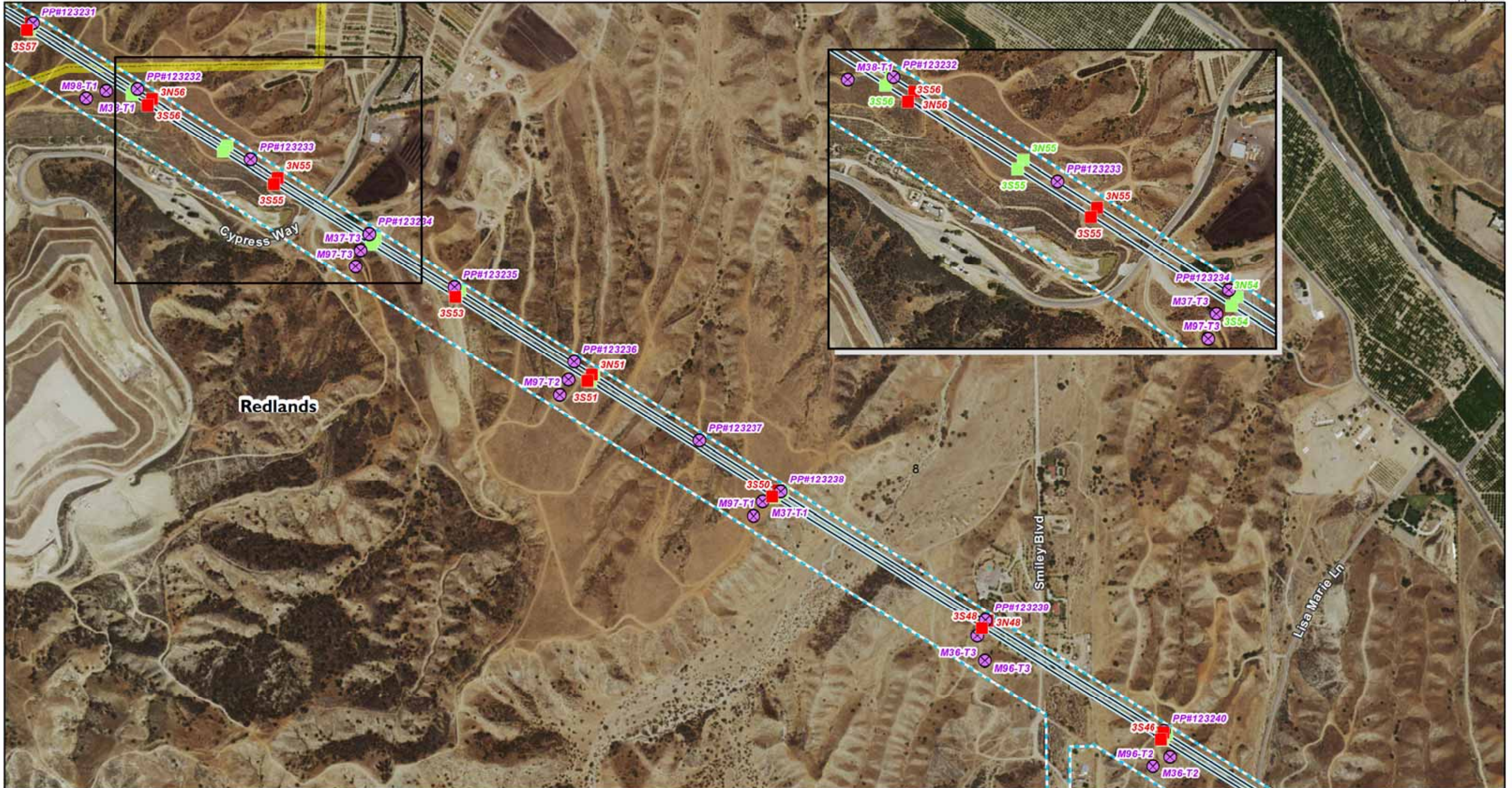
Proposed Transmission Line Segment

- Segment 3



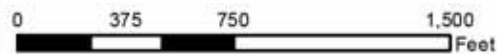
West of Devers Upgrade Project

**AP.2-7
Detailed Maps**



Sources: SCE 2014, USGS 2013

1:8,000



Transmission

- Currently Proposed New Tower Location
- ⊗ Existing Tower to be Removed
- Draft EIR/EIS Tower Location
- Approx. Existing 220kV T/L Corridor

Land Jurisdiction

- Incorporated City

Proposed Transmission Line Segment

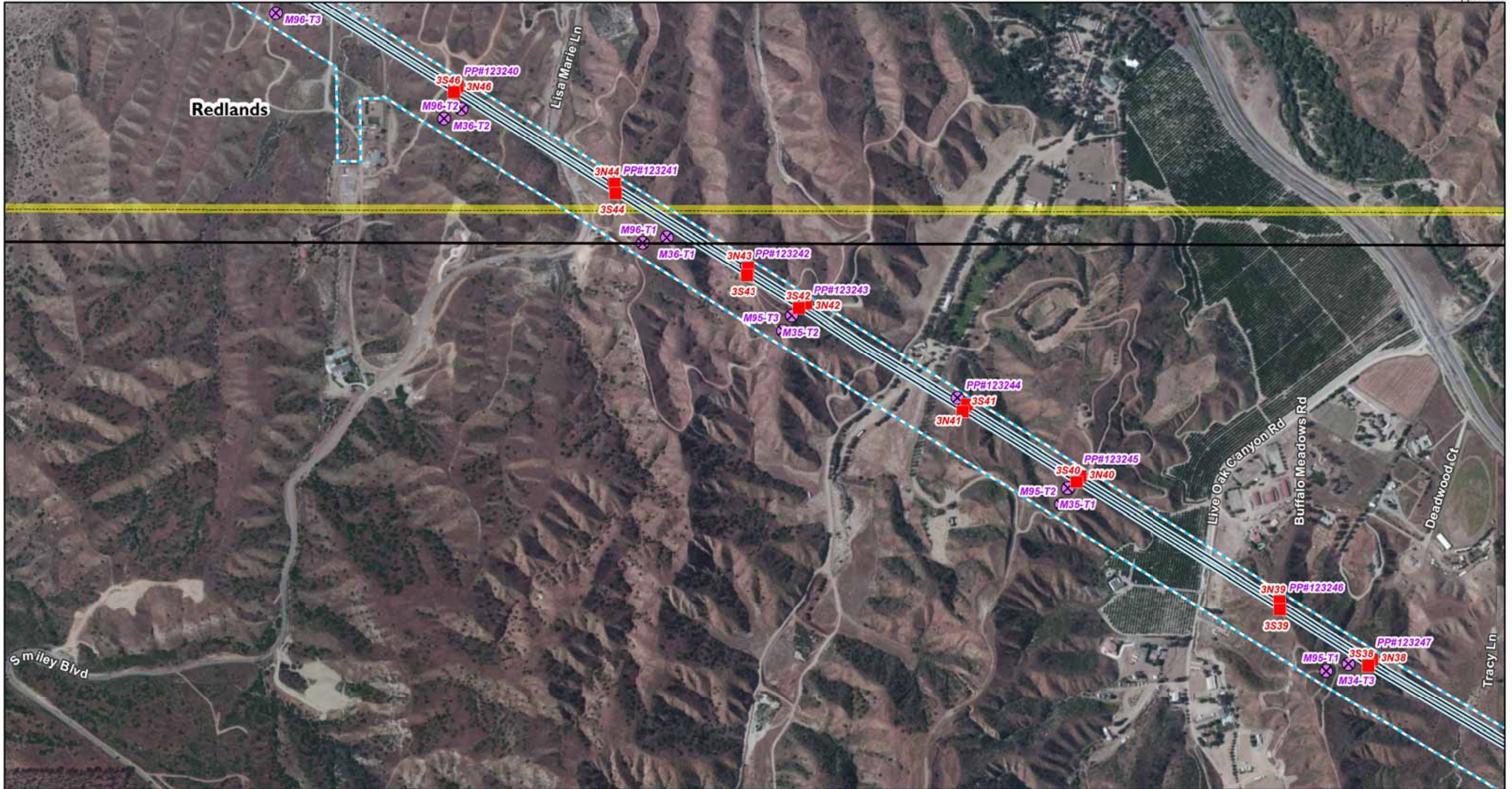
- Segment 3



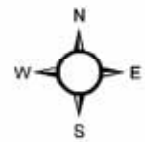
West of Devers Upgrade Project

AP.2-8
Detailed Maps

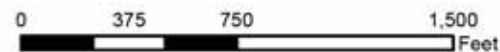
Page 8 of 29



Sources: SCE 2014, USGS 2013



1:8,000



Transmission

- Proposed New Tower
- ⊗ Existing Tower to be Removed
- Approx. Existing 220kV T/L Corridor

Proposed Transmission Line Segment

Segment 3

Land Jurisdiction

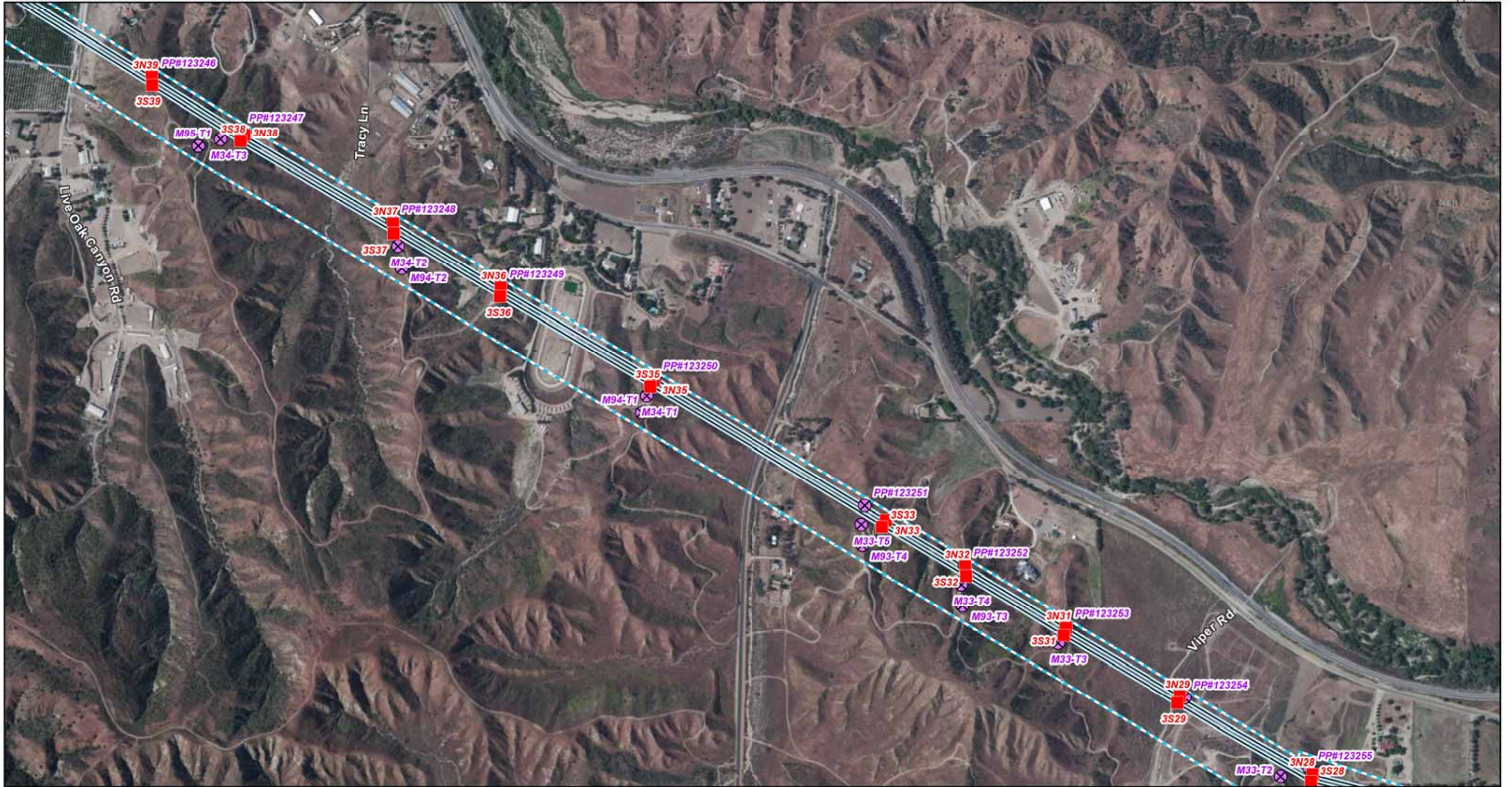
 Incorporated City



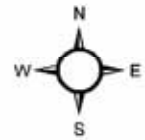
West of Devers Upgrade Project

AP.2-9
Detailed Maps

Page 9 of 29



Sources: SCE 2014, USGS 2013



1:8,000



Transmission

- Proposed New Tower
- ⊗ Existing Tower to be Removed
- Approx. Existing 220kV T/L Corridor

Proposed Transmission Line Segment

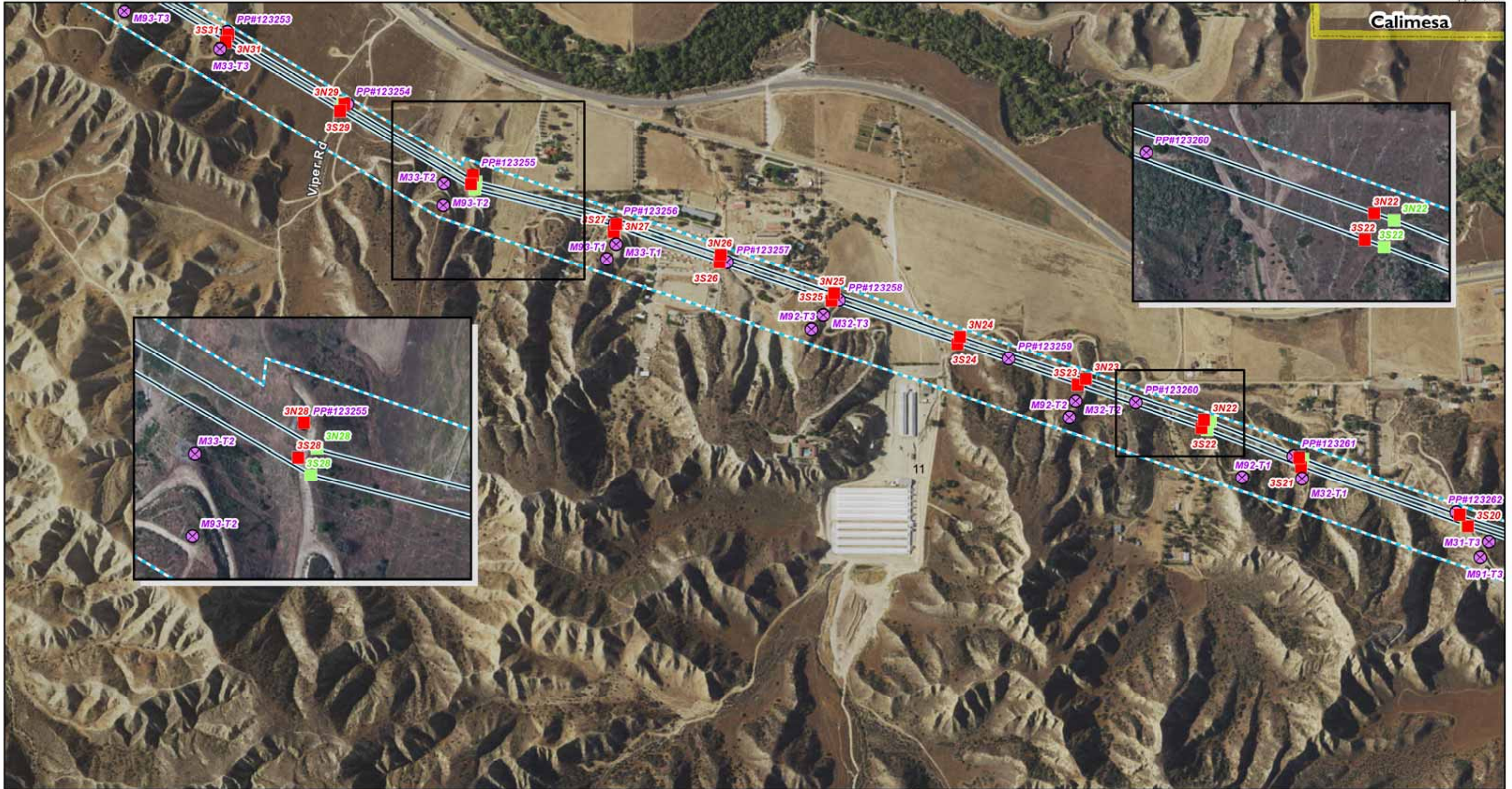
- Segment 3



West of Devers Upgrade Project

AP.2-10
Detailed Maps

Page 10 of 29



Sources: SCE 2014, USGS 2013

1:8,000



Transmission

- Currently Proposed New Tower Location
- ⊗ Existing Tower to be Removed
- Draft EIR/EIS Tower Location
- Approx. Existing 220kV T/L Corridor

Land Jurisdiction

- Incorporated City

Proposed Transmission Line Segment

- Segment 3



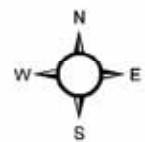
West of Devers Upgrade Project

AP.2-11
Detailed Maps

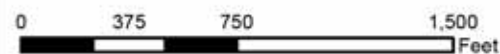
Page 11 of 29



Sources: SCE 2014, USGS 2013



1:8,000



Transmission

- Proposed New Tower
- ⊗ Existing Tower to be Removed
- Approx. Existing 220kV T/L Corridor

Proposed Transmission Line Segment

— Segment 3

Land Jurisdiction

Incorporated City



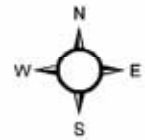
West of Devers Upgrade Project

AP.2-12
Detailed Maps

Page 12 of 29



Sources: SCE 2014, USGS 2013



1:8,000



Transmission

- Proposed New Tower
- ⊗ Existing Tower to be Modified
- ⊗ Existing Tower to be Removed
- Existing Tower (No Changes)
- ▲ Substation
- Substation Footprint
- Approx. Existing 220kV T/L Corridor

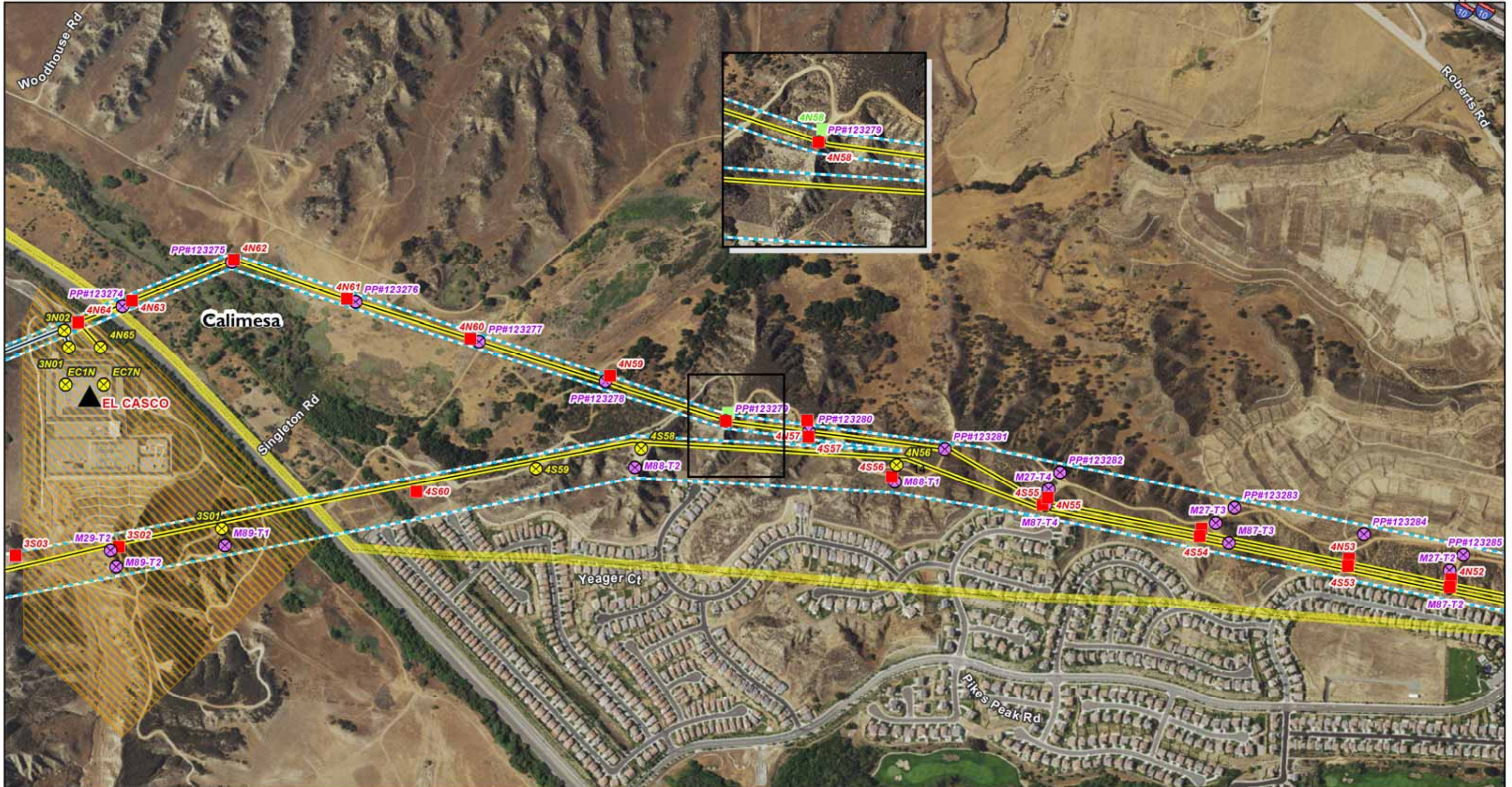
Proposed Transmission Line Segment

- Segment 3
- Segment 4



West of Devers Upgrade Project

AP.2-13
Detailed Maps



Aspen
Environmental Group

Sources: SCE 2014, USGS 2013

1:8,000

0 375 750 1,500 Feet

Transmission

- Existing Tower to be Modified
- Currently Proposed New Tower Location
- Existing Tower to be Removed
- Draft EIR/EIS Tower Location

- Substation
- Substation Footprint
- Approx. Existing 220kV T/L Corridor

Proposed Transmission Line Segment

- Segment 3
- Segment 4

Land Jurisdiction

- Incorporated City

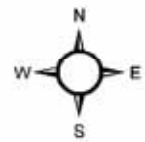


West of Devers Upgrade Project

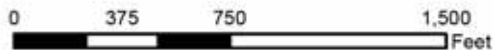
AP.2-14
Detailed Maps
Page 14 of 29



Sources: SCE 2014, USGS 2013



1:8,000



Transmission

- Proposed New Tower
- ⊗ Existing Tower to be Removed
- Approx. Existing 220kV T/L Corridor

Proposed Transmission Line Segment

- Segment 4



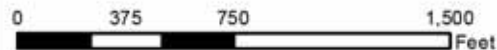
West of Devers Upgrade Project

AP.2-15
Detailed Maps



Sources: SCE 2014, USGS 2013

1:8,000



Transmission

- Existing Tower to be Modified
- Currently Proposed New Tower Location
- Existing Tower to be Removed
- Draft EIR/EIS Tower Location
- Approx. Existing 220kV T/L Corridor

Land Jurisdiction

- Incorporated City

Proposed Transmission Line Segment

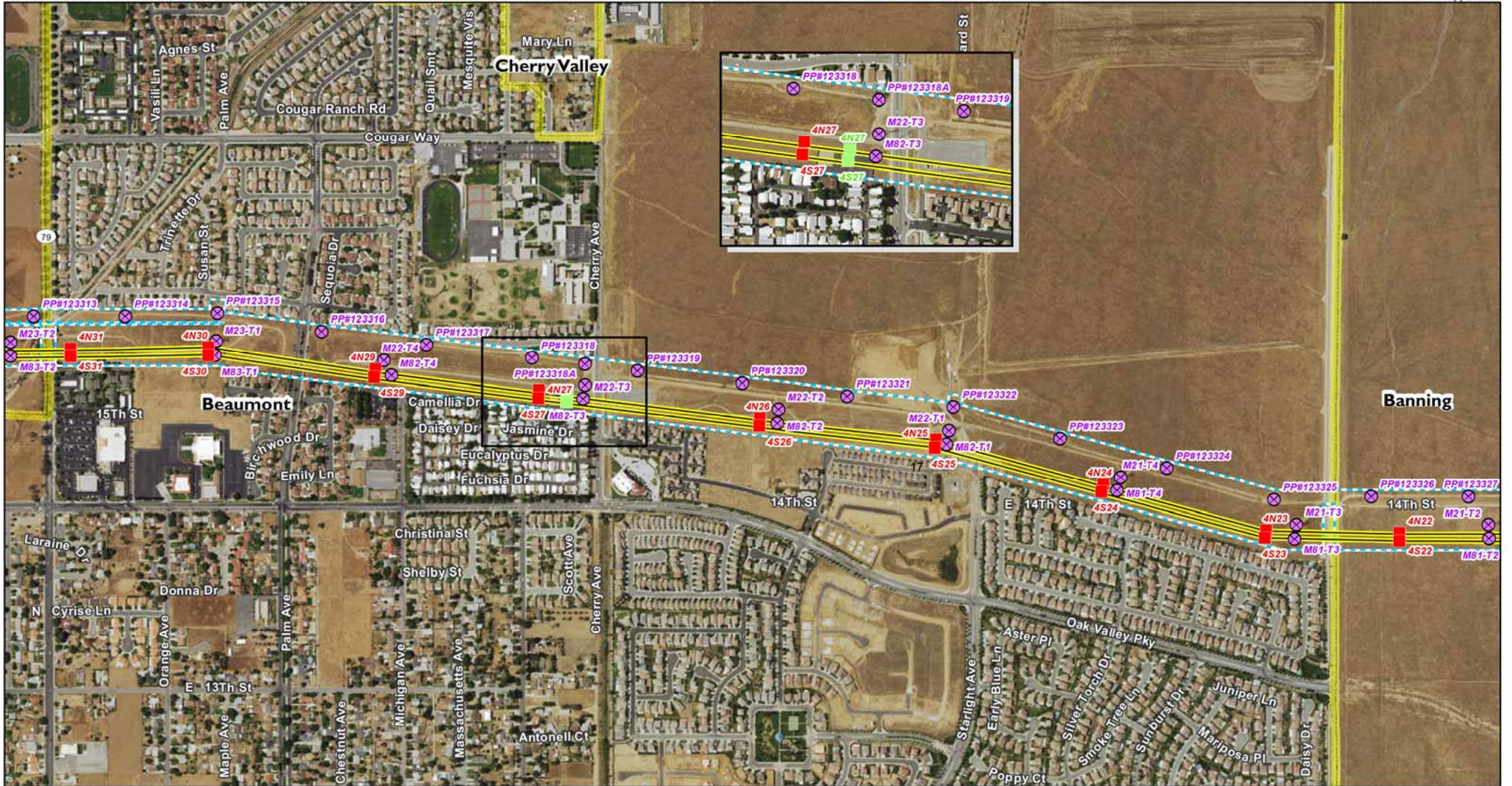
- Segment 4



West of Devers Upgrade Project

AP.2-16
Detailed Maps

Page 16 of 29



Aspen
Environmental Group

Sources: SCE 2014, USGS 2013

1:8,000

0 375 750 1,500 Feet

Transmission

- Currently Proposed New Tower Location
- ⊗ Existing Tower to be Removed
- Draft EIR/EIS Tower Location
- Approx. Existing 220kV T/L Corridor

Land Jurisdiction

- Incorporated City

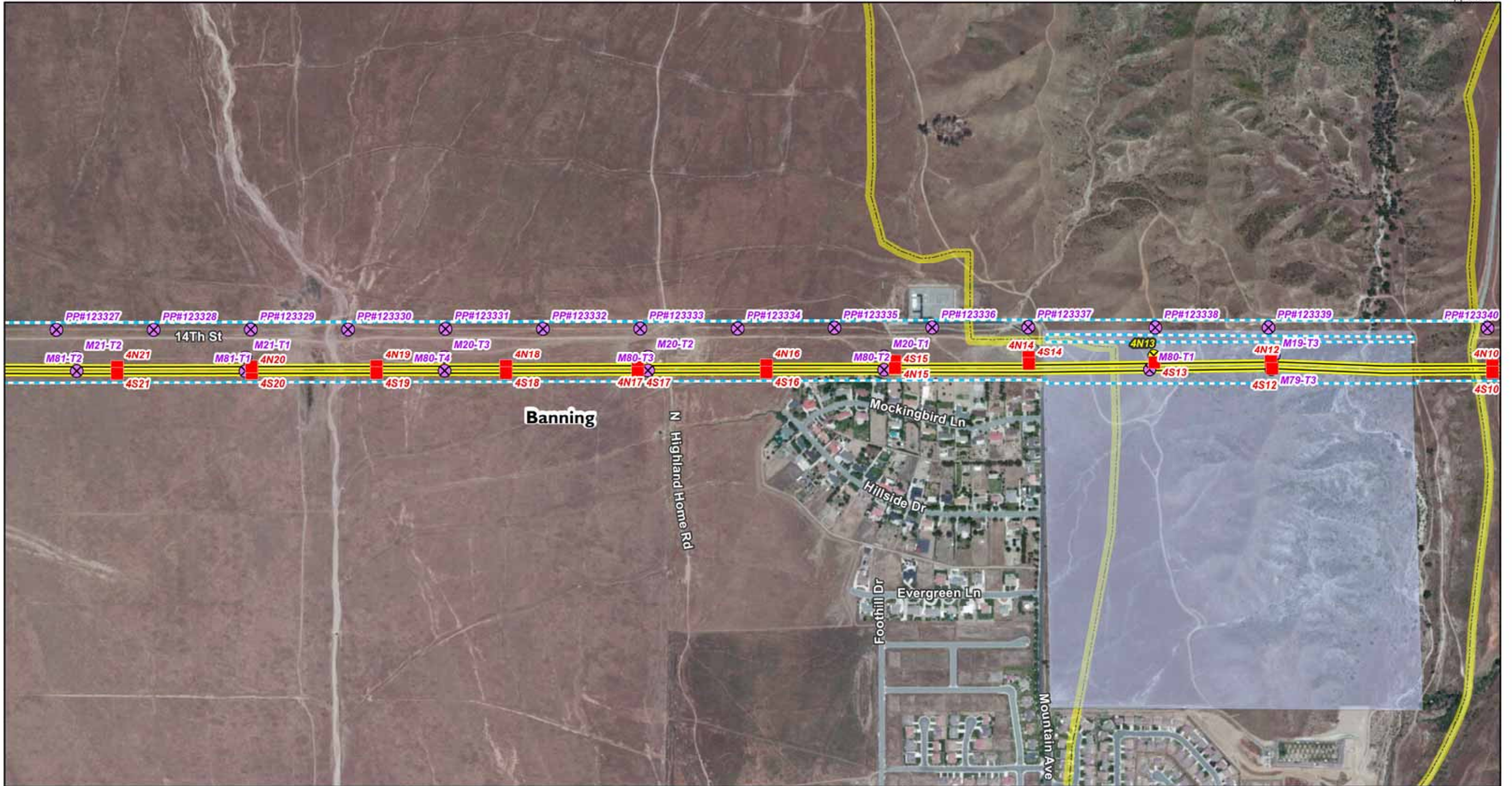
Proposed Transmission Line Segment

- Segment 4

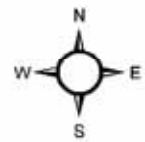


West of Devers Upgrade Project

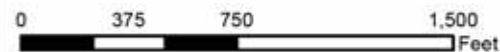
AP.2-17
Detailed Maps
Page 17 of 29



Sources: SCE 2014, USGS 2013



1:8,000



Transmission

- Proposed New Tower
- ⊗ Existing Tower to be Modified
- ⊗ Existing Tower to be Removed
- ⋯ Approx. Existing 220kV T/L Corridor

Land Jurisdiction

- Incorporated City
- Morongo Band of Mission Indians

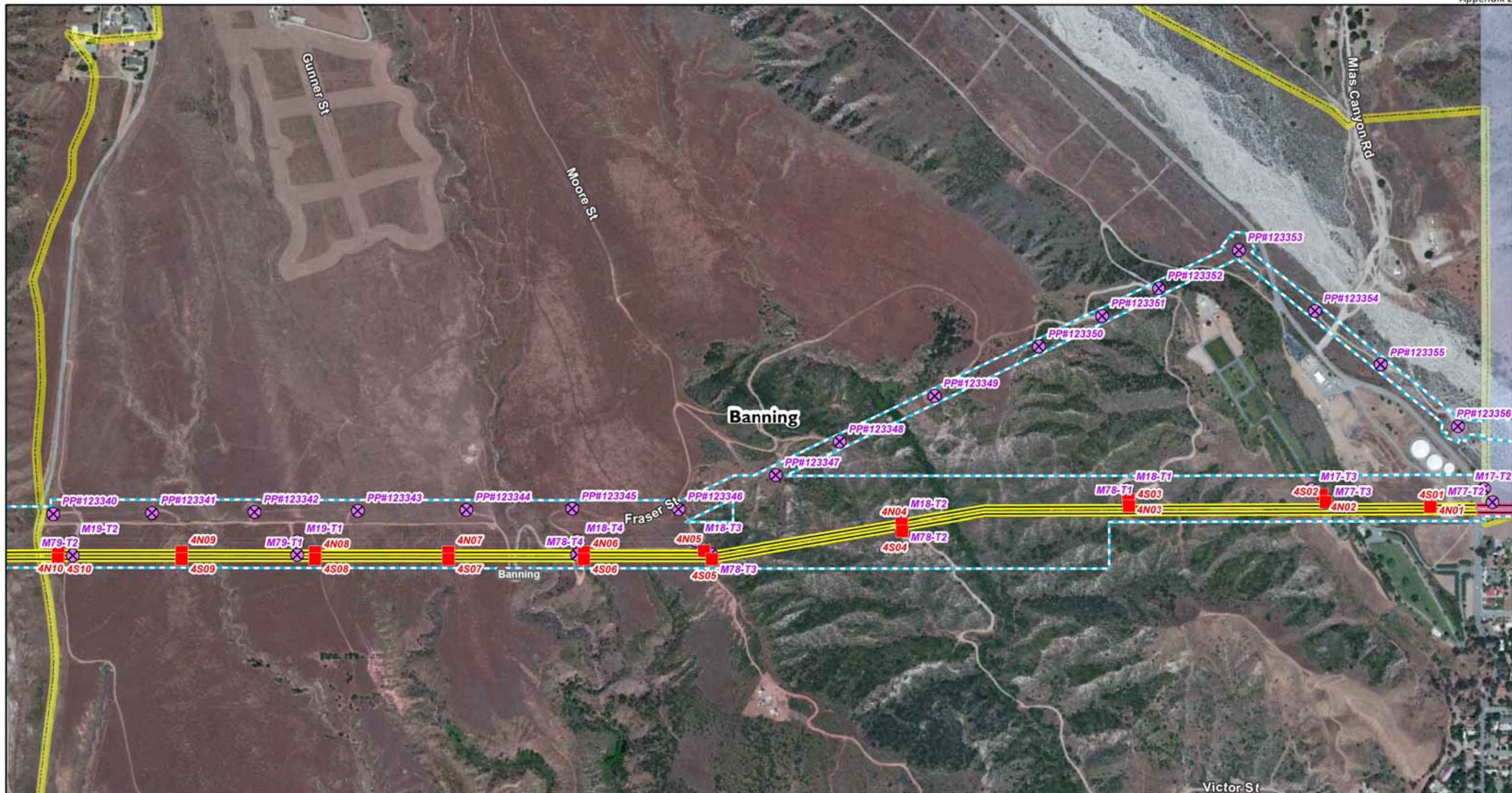
Proposed Transmission Line Segment

- Segment 4

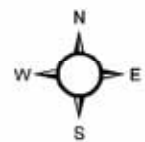


West of Devers Upgrade Project

AP.2-18
Detailed Maps



Sources: SCE 2014, USGS 2013



1:8,000



Transmission

- Proposed New Tower
- ⊗ Existing Tower to be Removed
- Approx. Existing 220kV T/L Corridor

Land Jurisdiction

- Incorporated City
- Morongo Band of Mission Indians

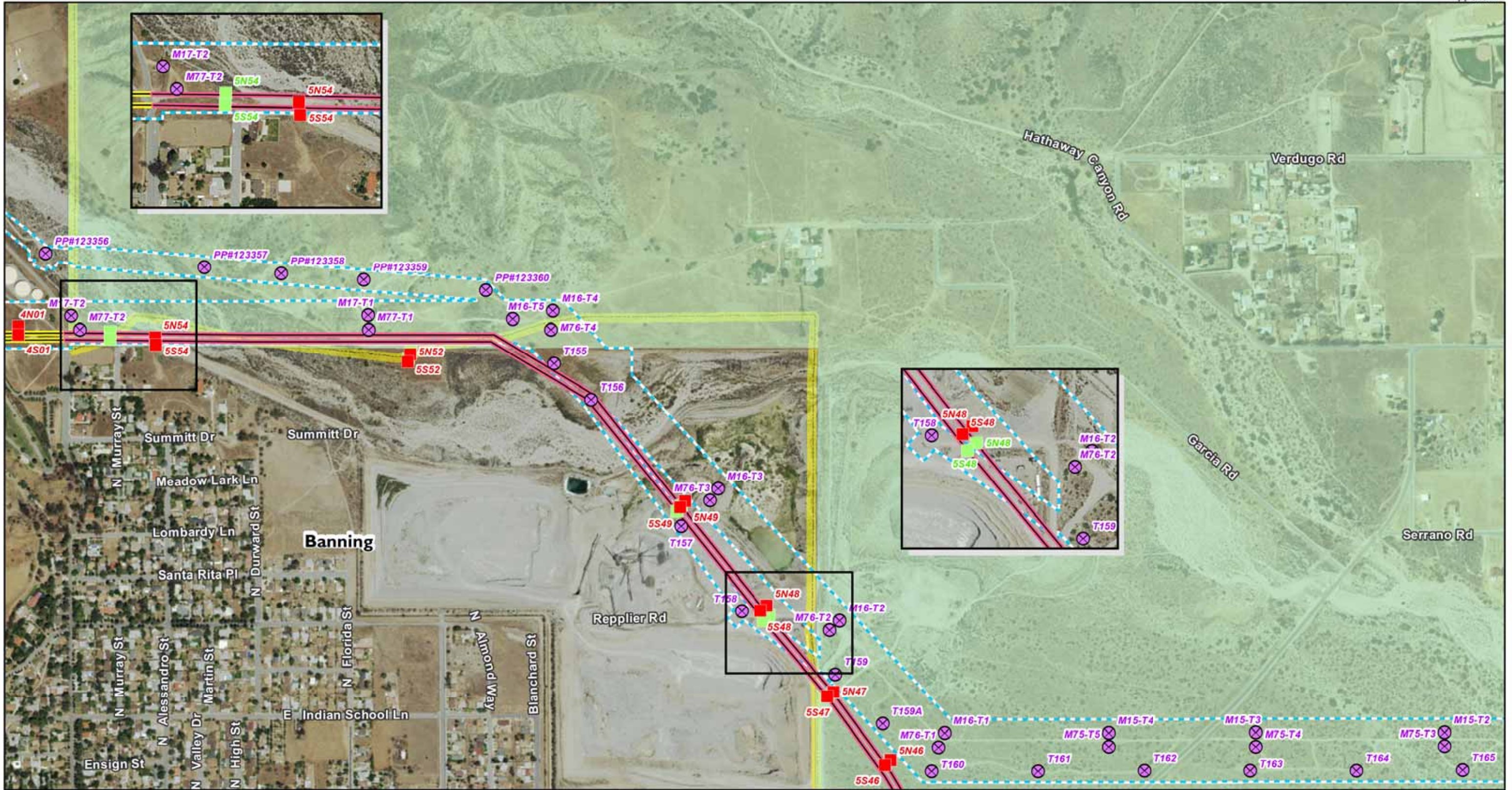
Proposed Transmission Line Segment

- Segment 4
- Segment 5



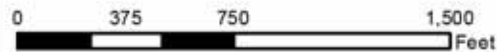
West of Devers Upgrade Project

AP.2-19
Detailed Maps



Sources: SCE 2014, USGS 2013

1:8,000



Transmission

- Currently Proposed New Tower Location
- ⊗ Existing Tower to be Removed
- Draft EIR/EIS Tower Location
- - - Approx. Existing 220kV T/L Corridor

Land Jurisdiction

- Incorporated City
- Land Jurisdiction

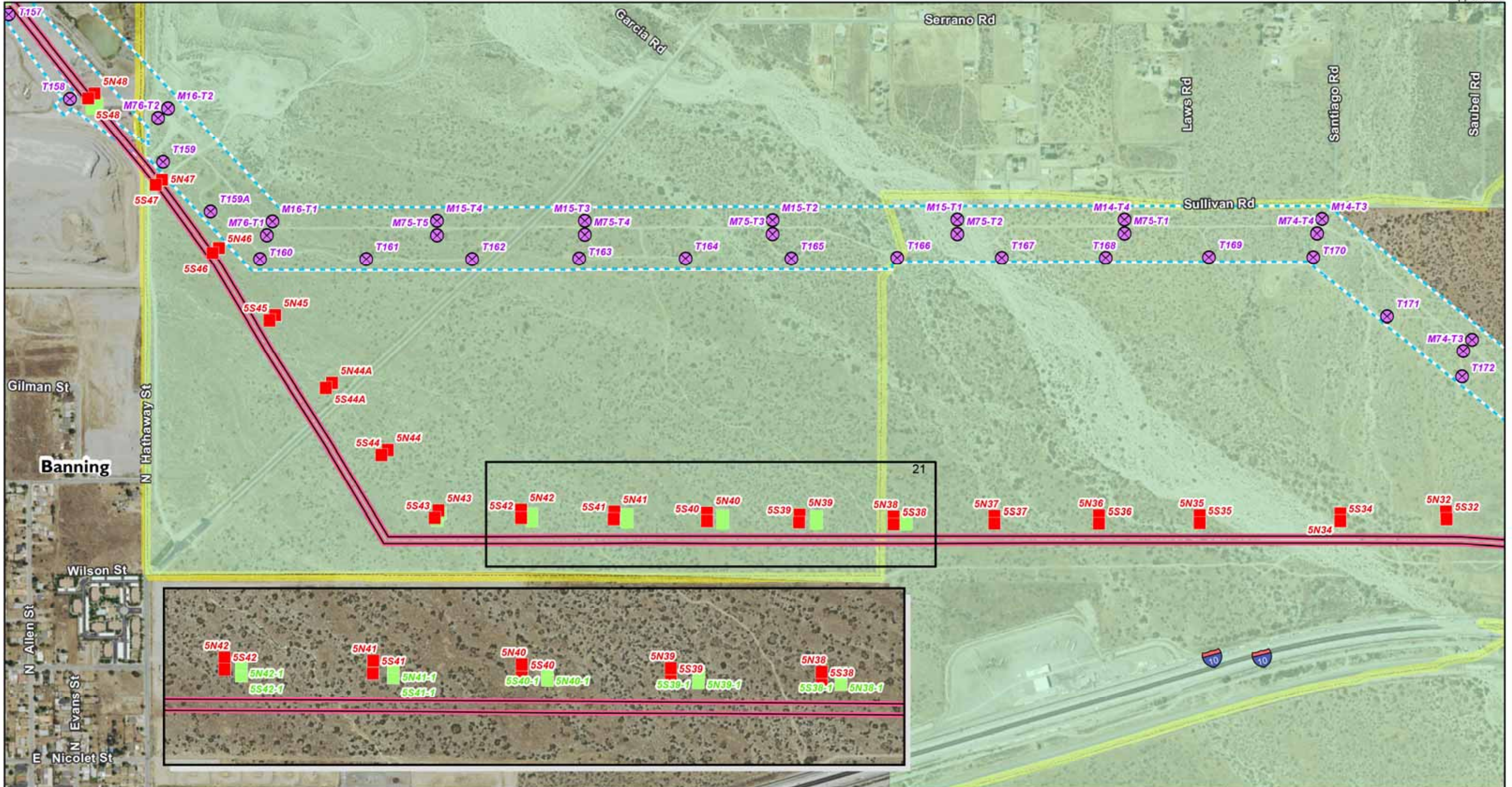
Proposed Transmission Line Segment

- Segment 4
- Segment 5



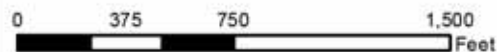
West of Devers Upgrade Project

AP.2-20
Detailed Maps



Sources: SCE 2014, USGS 2013

1:8,000



Transmission

- Currently Proposed New Tower Location
- ⊗ Existing Tower to be Removed
- Draft EIR/EIS Tower Location
- - - Approx. Existing 220kV T/L Corridor

Land Jurisdiction

- Incorporated City
- Land Jurisdiction

Proposed Transmission Line Segment

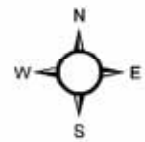
- Segment 5



West of Devers Upgrade Project



Sources: SCE 2014, USGS 2013



1:8,000



Transmission

- Proposed New Tower
- ⊗ Existing Tower to be Removed
- Approx. Existing 220kV T/L Corridor

Land Jurisdiction

- Incorporated City
- Morongo Band of Mission Indians

Proposed Transmission Line Segment

- Segment 5



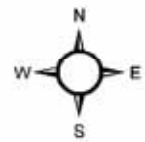
West of Devers Upgrade Project

AP.2-22
Detailed Maps

Page 22 of 29



Sources: SCE 2014, USGS 2013



1:8,000



Transmission

- Proposed New Tower
- ⊗ Existing Tower to be Removed
- Approx. Existing 220kV T/L Corridor

Land Jurisdiction

- Morongo Band of Mission Indians

Proposed Transmission Line Segment

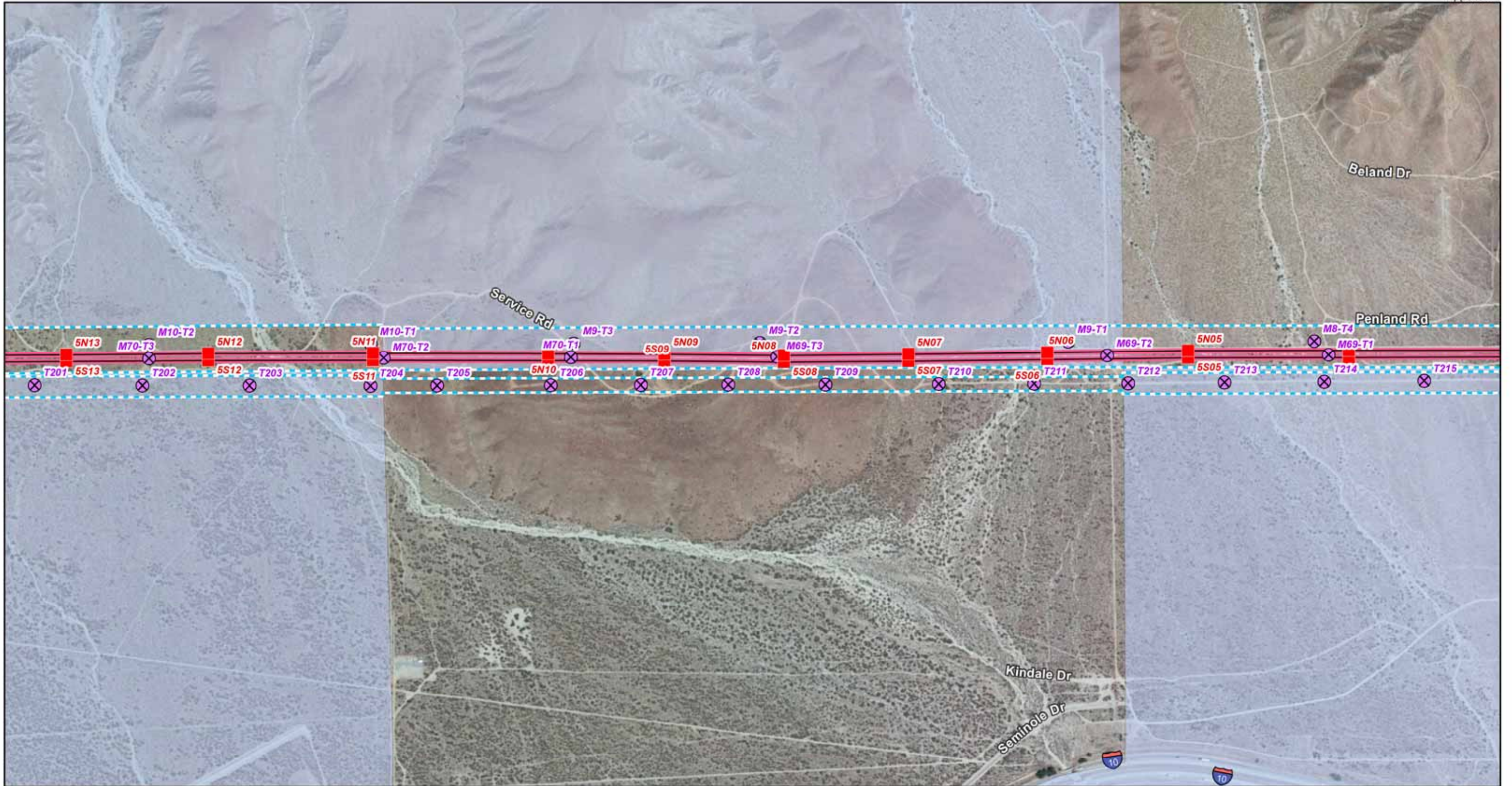
- Segment 5



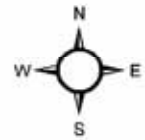
West of Devers Upgrade Project

AP.2-23
Detailed Maps

Page 23 of 29



Sources: SCE 2014, USGS 2013



1:8,000



Transmission

- Proposed New Tower
- ⊗ Existing Tower to be Removed
- Approx. Existing 220kV T/L Corridor

Land Jurisdiction

- Morongo Band of Mission Indians

Proposed Transmission Line Segment

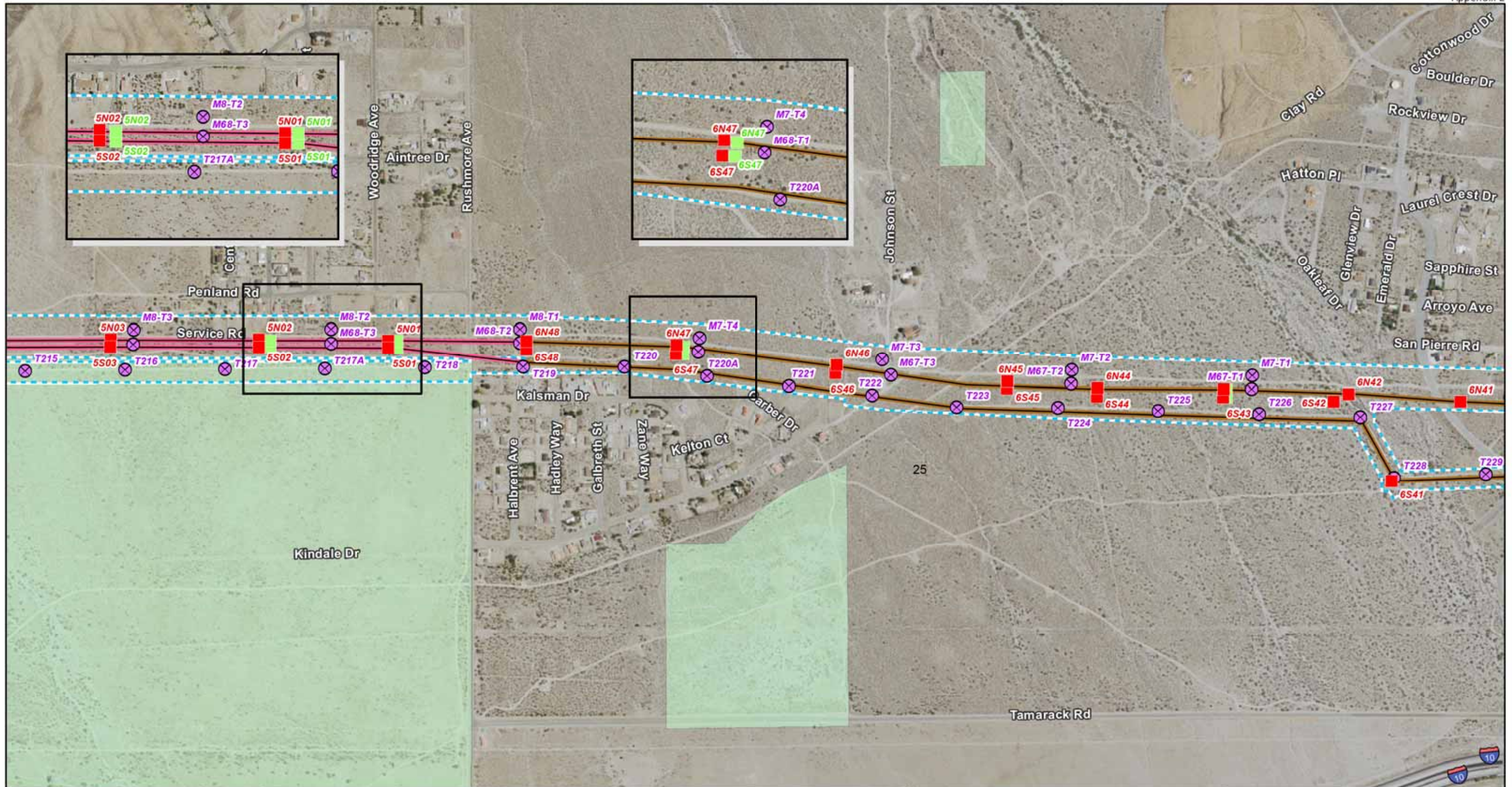
- Segment 5



West of Devers Upgrade Project

AP.2-24
Detailed Maps

Page 24 of 29



Aspen
Environmental Group

Sources: SCE 2014, USGS 2013

1:8,000

0 375 750 1,500 Feet

Transmission

- Currently Proposed New Tower Location
- ⊗ Existing Tower to be Removed
- Draft EIR/EIS Tower Location
- Approx. Existing 220kV T/L Corridor

Land Jurisdiction

- Land Jurisdiction

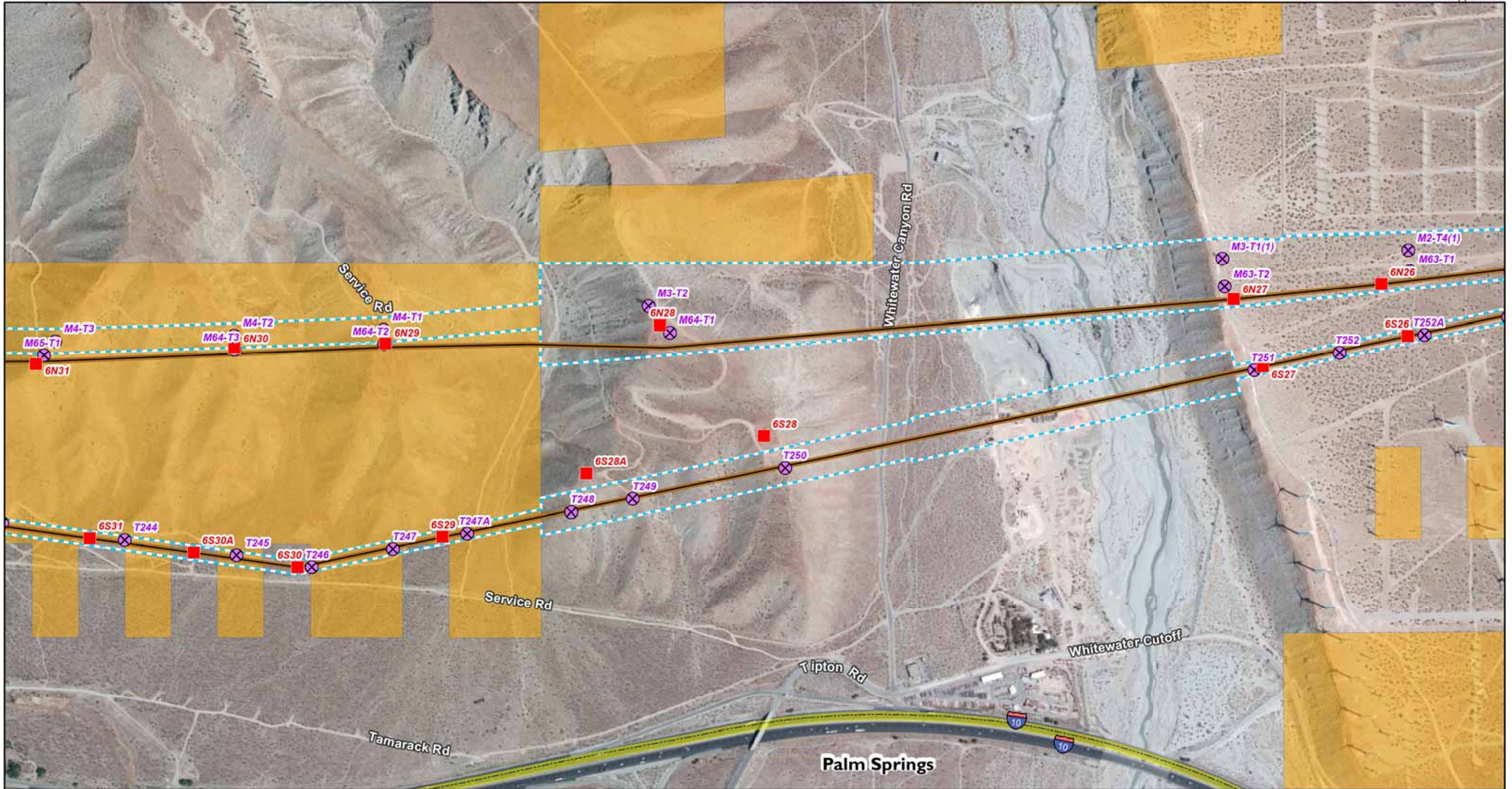
Proposed Transmission Line Segment

- Segment 5
- Segment 6

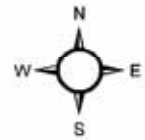


West of Devers Upgrade Project

AP.2-25
Detailed Maps
Page 25 of 29



Sources: SCE 2014, USGS 2013



1:8,000



Transmission

- Proposed New Tower
- ⊗ Existing Tower to be Removed
- Approx. Existing 220kV T/L Corridor

Land Jurisdiction

- Incorporated City
- Bureau of Land Management

Proposed Transmission Line Segment

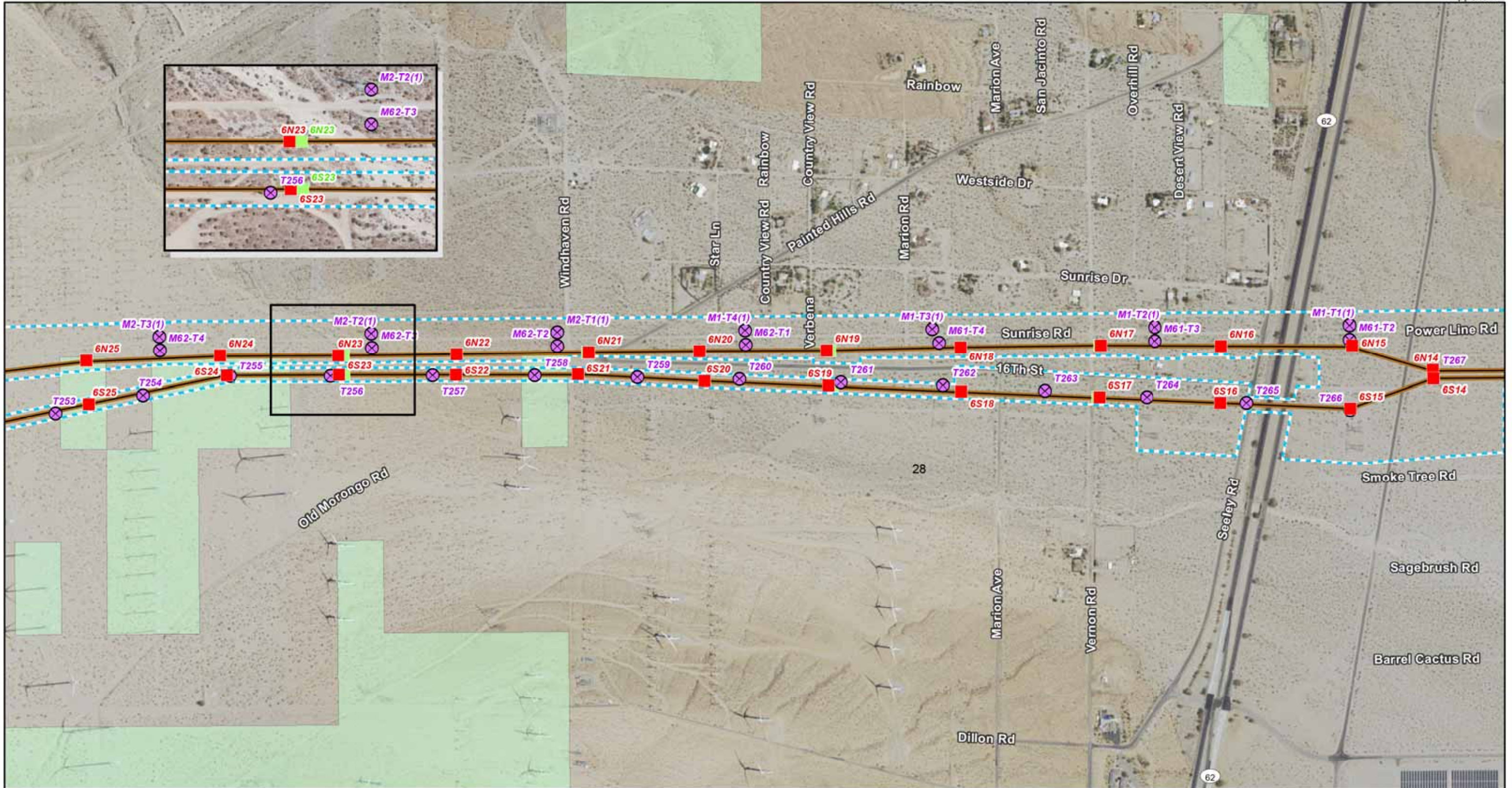
- Segment 6



West of Devers Upgrade Project

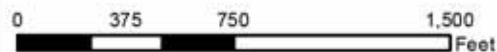
AP.2-27
Detailed Maps

Page 27 of 29



Sources: SCE 2014, USGS 2013

1:8,000



Transmission

- Currently Proposed New Tower Location
- ⊗ Existing Tower to be Removed
- Draft EIR/EIS Tower Location
- Approx. Existing 220kV T/L Corridor

Land Jurisdiction

- Land Jurisdiction

Proposed Transmission Line Segment

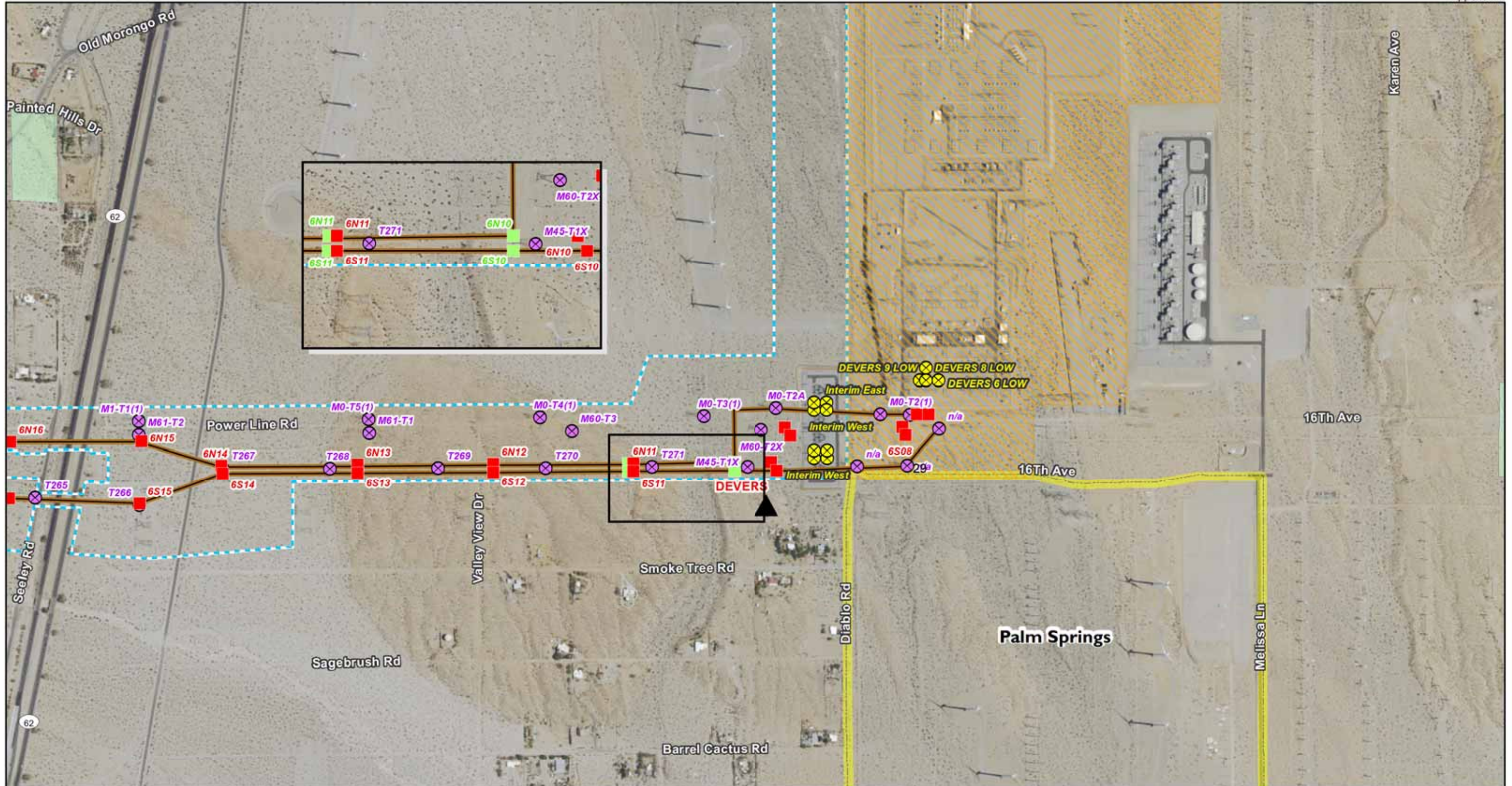
- Segment 6



West of Devers Upgrade Project

AP.2-28
Detailed Maps

Page 28 of 29



Aspen
Environmental Group

Sources: SCE 2014, USGS 2013

1:8,000

0 375 750 1,500 Feet

Transmission

- Existing Tower to be Modified
- Currently Proposed New Tower Location
- Existing Tower to be Removed
- Draft EIR/EIS Tower Location

Substation

- Substation
- Substation Footprint
- Approx. Existing 220kV T/L Corridor

Proposed Transmission Line Segment

- Segment 6

Land Jurisdiction

- Incorporated City
- Land Jurisdiction



West of Devers Upgrade Project

AP.2-29
Detailed Maps
Page 29 of 29