

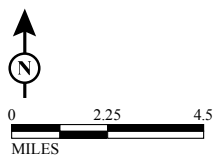
© 2010 NAVTEQ © AND © 2013 Microsoft Corporation

FIGURE 4.4-1



LEGEND

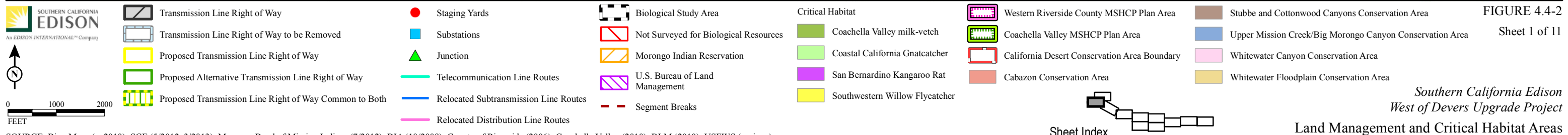
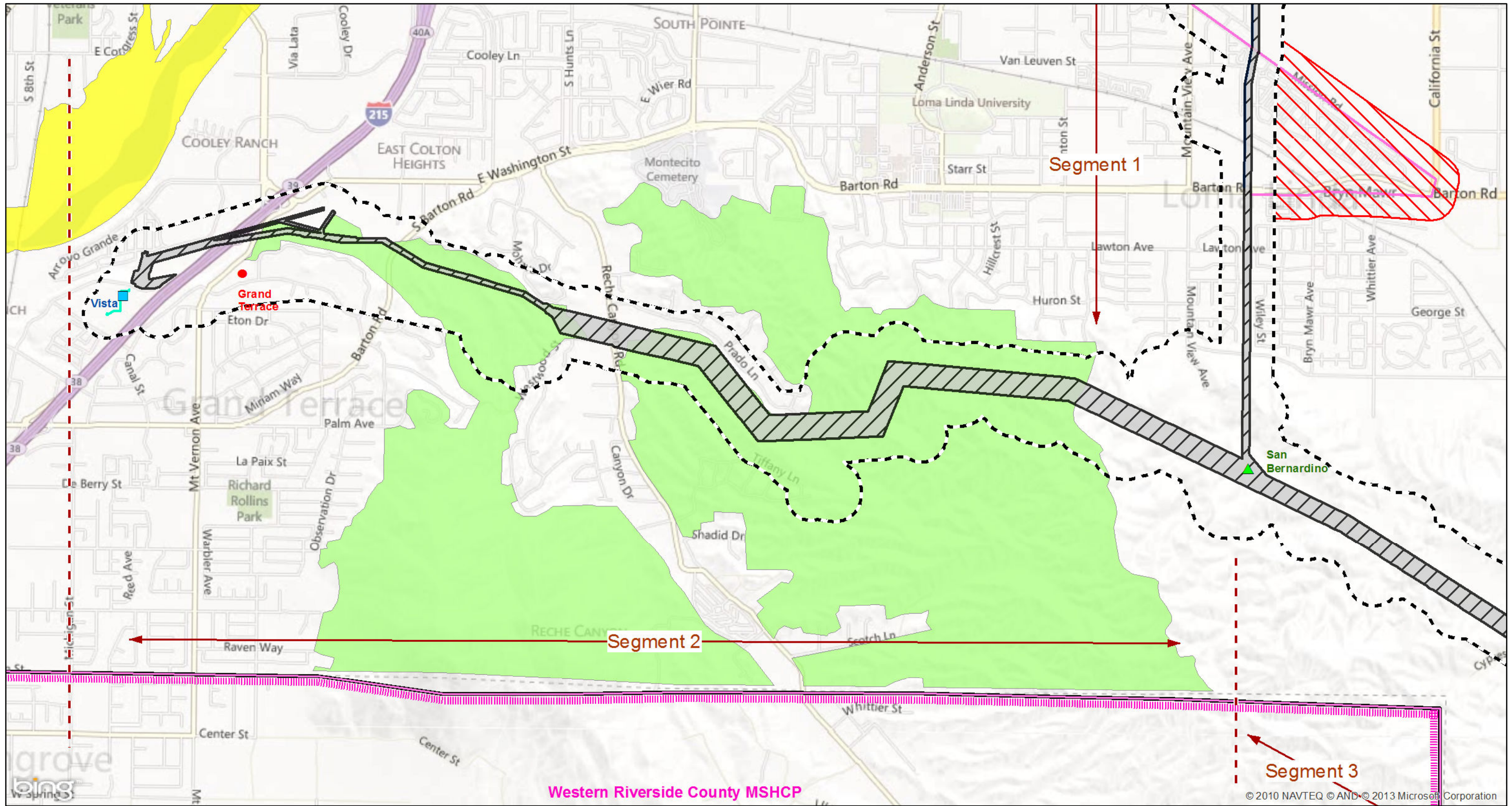
- Existing Transmission Line Right of Way
- Existing Transmission Line Right of Way to be Removed
- Proposed and Alternative Transmission Line Right of Ways
- Substation
- Junctions
- Biological Study Area
- Not Surveyed for Biological Resources
- U.S. Bureau of Land Management
- Morongo Indian Reservation



SOURCE: Bing Maps (c. 2010); BLM (2012); BIA (2012); SCE (2012, 2013)
 I:\SCE1110\GIS\MXD\Biology\BioProjectLimits_PEA.mxd (7/1/2013)

*Southern California Edison
 West of Devers Upgrade Project
 Biological Project Study Area*

This Page Intentionally Left Blank



SOURCE: Bing Maps (c. 2010); SCE (5/2012, 3/2013); Morongo Band of Mission Indians (7/2012); BIA (10/2009); County of Riverside (2006); Coachella Valley (2010); BLM (2010); USFWS (various)
I:\SCE1110\GIS\MXD\Biology\CritHab_LandMgmt_PEA.mxd (7/2/2013)

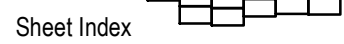
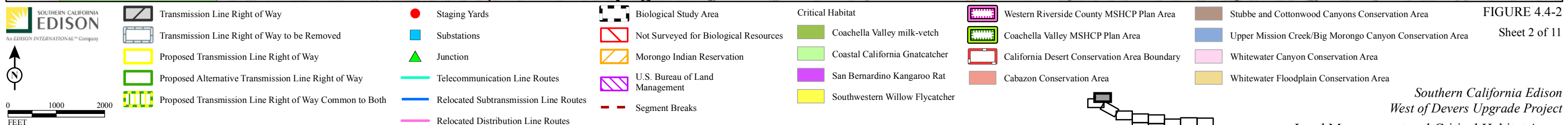
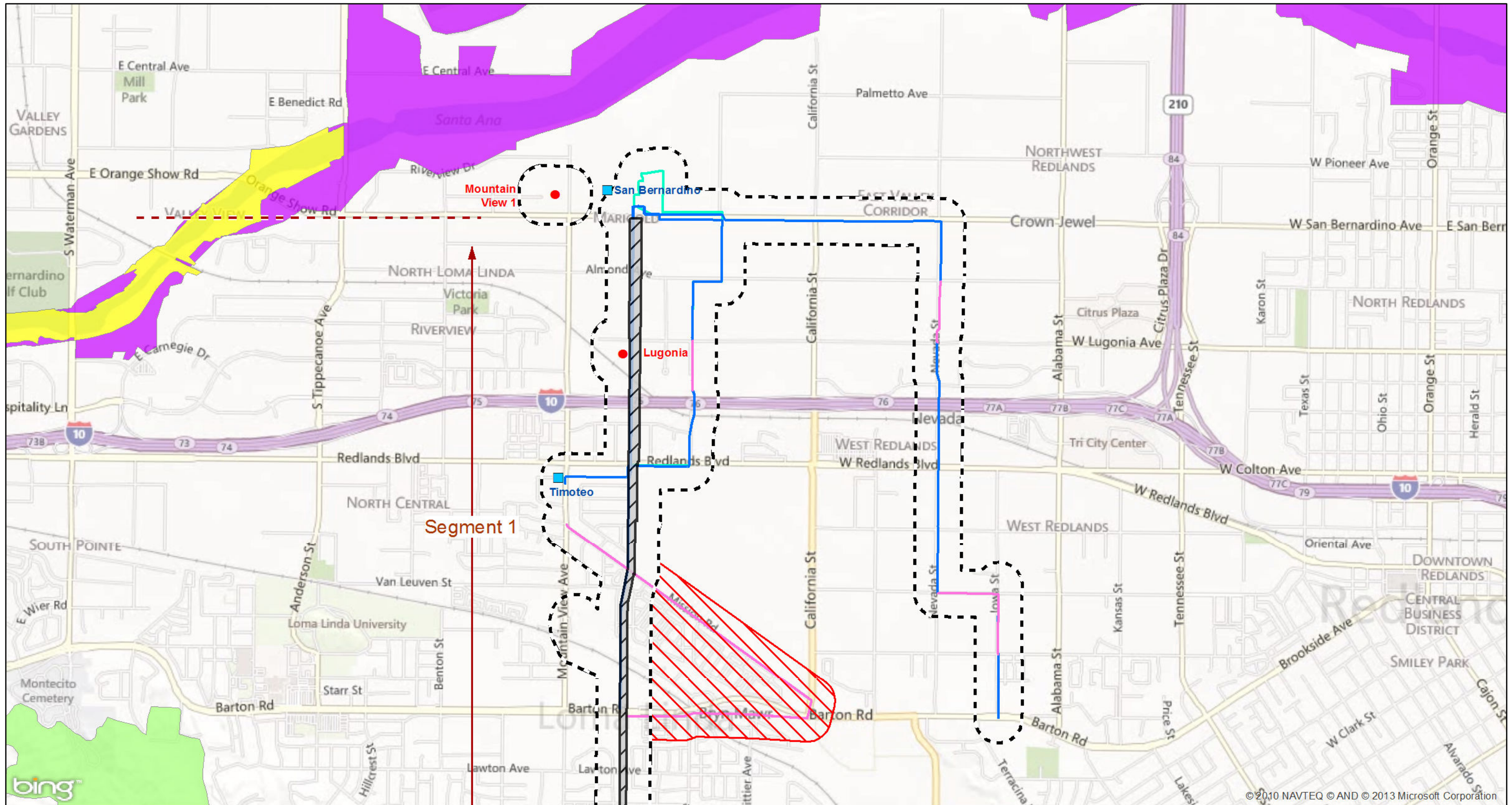


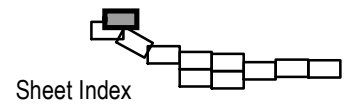
FIGURE 4.4-2
Sheet 1 of 11
Southern California Edison
West of Devers Upgrade Project
Land Management and Critical Habitat Areas

This Page Intentionally Left Blank



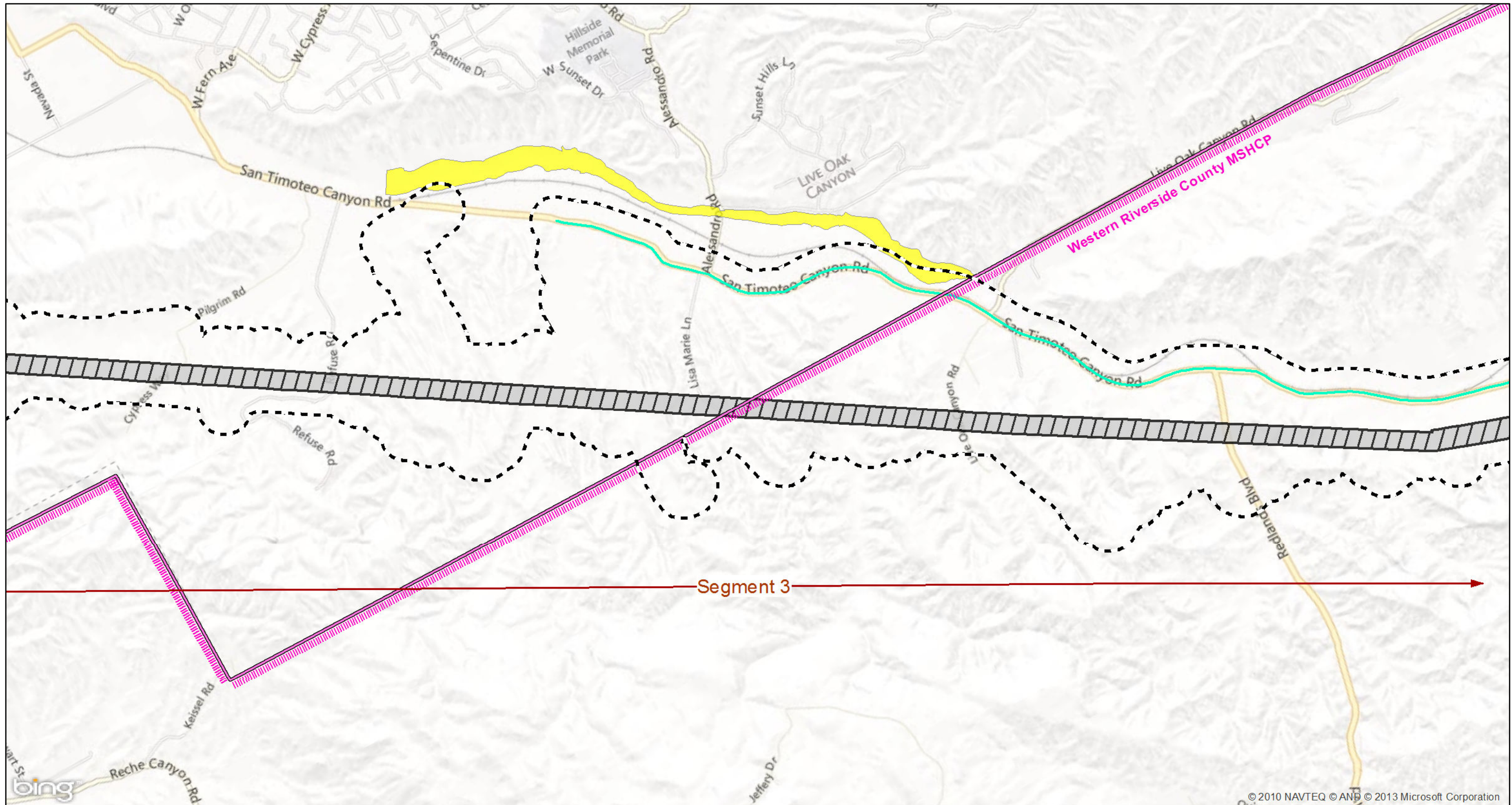
SOURCE: Bing Maps (c. 2010); SCE (5/2012, 3/2013); Morongo Band of Mission Indians (7/2012); BIA (10/2009); County of Riverside (2006); Coachella Valley (2010); BLM (2010); USFWS (various)
 I:\SCE1110\GIS\MXD\Biology\CritHab_LandMgmt_PEA.mxd (7/2/2013)

FIGURE 4.4-2
 Sheet 2 of 11



Southern California Edison
 West of Devers Upgrade Project
 Land Management and Critical Habitat Areas

This Page Intentionally Left Blank



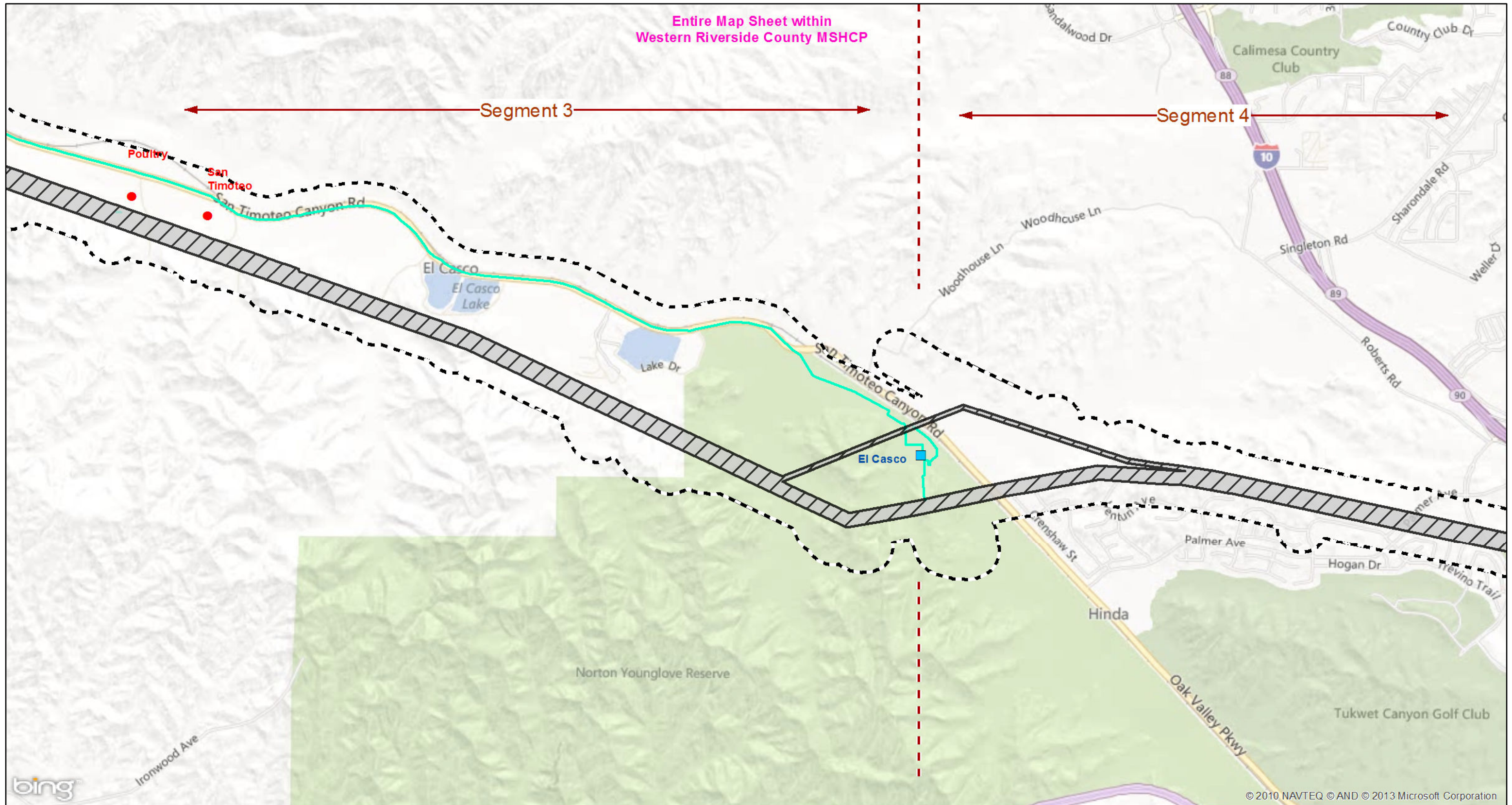
<p>SOUTHERN CALIFORNIA EDISON An EDISON INTERNATIONAL™ Company</p>	Transmission Line Right of Way	Staging Yards	Biological Study Area	Critical Habitat	Western Riverside County MSHCP Plan Area	Stubbe and Cottonwood Canyons Conservation Area
	Transmission Line Right of Way to be Removed	Substations	Not Surveyed for Biological Resources	Coachella Valley milk-vetch	Coachella Valley MSHCP Plan Area	Upper Mission Creek/Big Morongo Canyon Conservation Area
	Proposed Transmission Line Right of Way	Junction	Morongo Indian Reservation	Coastal California Gnatcatcher	California Desert Conservation Area Boundary	Whitewater Canyon Conservation Area
	Proposed Alternative Transmission Line Right of Way	Telecommunication Line Routes	U.S. Bureau of Land Management	San Bernardino Kangaroo Rat	Cabazon Conservation Area	Whitewater Floodplain Conservation Area
	Proposed Transmission Line Right of Way Common to Both	Relocated Subtransmission Line Routes	Segment Breaks	Southwestern Willow Flycatcher		

SOURCE: Bing Maps (c. 2010); SCE (5/2012, 3/2013); Morongo Band of Mission Indians (7/2012); BIA (10/2009); County of Riverside (2006); Coachella Valley (2010); BLM (2010); USFWS (various)
 I:\SCE1110\GIS\MXD\Biology\CritHab_LandMgmt_PEA.mxd (7/2/2013)

FIGURE 4.4-2
 Sheet 3 of 11

Southern California Edison
West of Devers Upgrade Project
 Land Management and Critical Habitat Areas

This Page Intentionally Left Blank



<p>SOUTHERN CALIFORNIA EDISON An EDISON INTERNATIONAL™ Company</p>	Transmission Line Right of Way	Staging Yards	Biological Study Area	Critical Habitat	Western Riverside County MSHCP Plan Area	Stubbe and Cottonwood Canyons Conservation Area
	Transmission Line Right of Way to be Removed	Substations	Not Surveyed for Biological Resources	Coachella Valley milk-vetch	Coachella Valley MSHCP Plan Area	Upper Mission Creek/Big Morongo Canyon Conservation Area
Proposed Transmission Line Right of Way	Junction	Morongo Indian Reservation	U.S. Bureau of Land Management	Coastal California Gnatcatcher	California Desert Conservation Area Boundary	Whitewater Canyon Conservation Area
Proposed Alternative Transmission Line Right of Way	Telecommunication Line Routes	Relocated Subtransmission Line Routes	Segment Breaks	San Bernardino Kangaroo Rat	Cabazon Conservation Area	Whitewater Floodplain Conservation Area
Proposed Transmission Line Right of Way Common to Both	Relocated Distribution Line Routes					

SOURCE: Bing Maps (c. 2010); SCE (5/2012, 3/2013); Morongo Band of Mission Indians (7/2012); BIA (10/2009); County of Riverside (2006); Coachella Valley (2010); BLM (2010); USFWS (various)

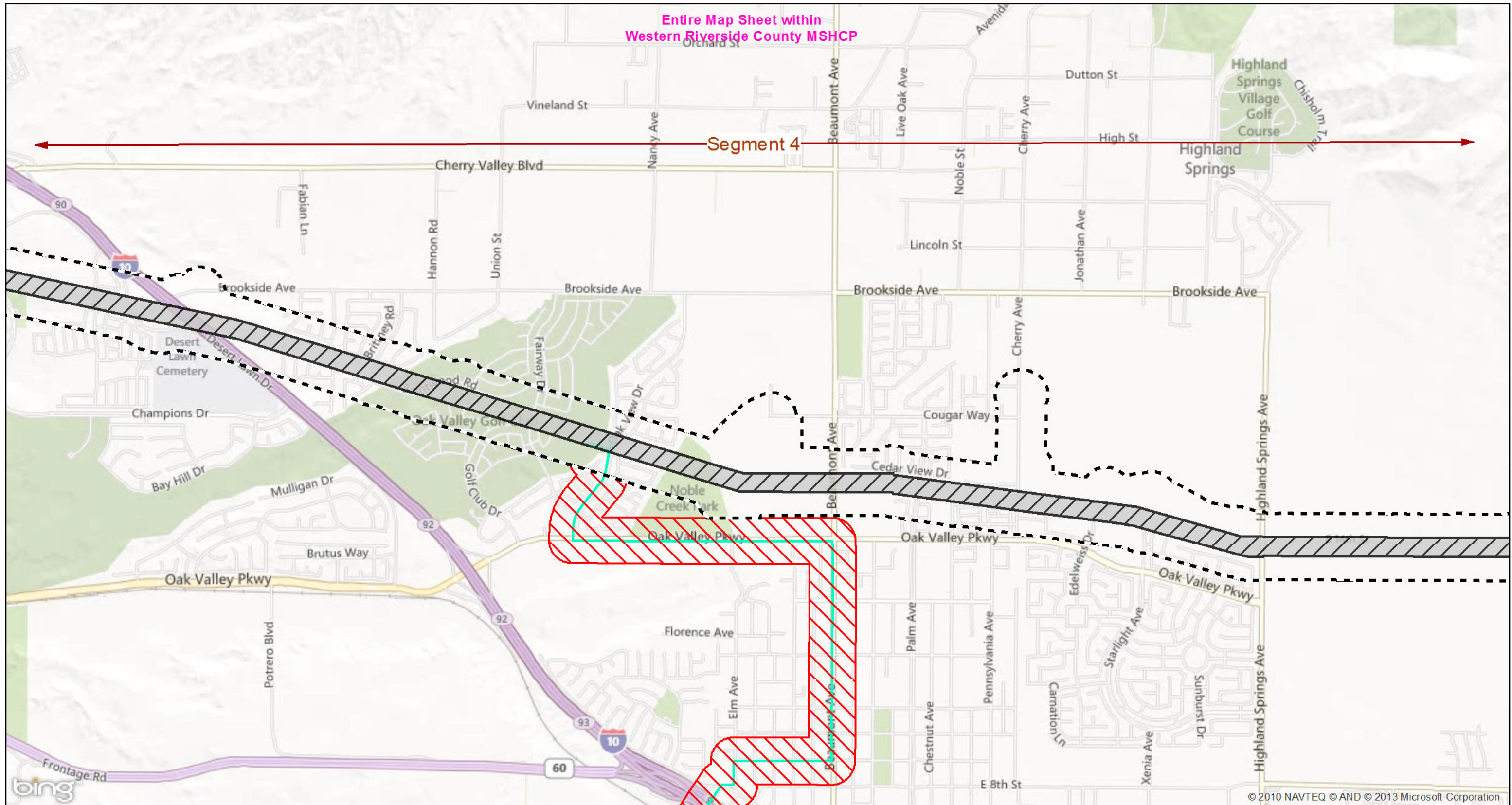
I:\SCE1110\GIS\MXD\Biology\CritHab_LandMgmt_PEA.mxd (7/2/2013)

Sheet Index

Southern California Edison
West of Devers Upgrade Project
Land Management and Critical Habitat Areas

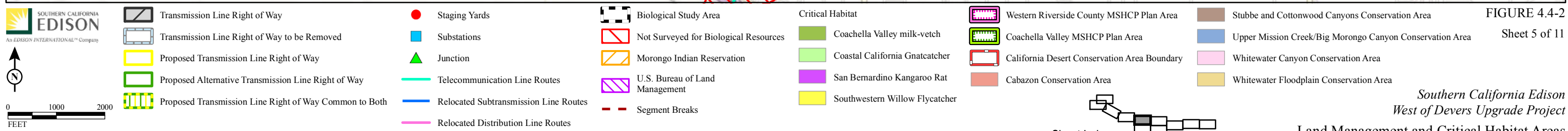
FIGURE 4.4-2
Sheet 4 of 11

This Page Intentionally Left Blank



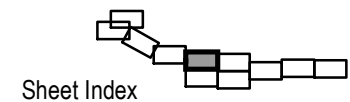
Entire Map Sheet within
Western Riverside County MSHCP

Segment 4



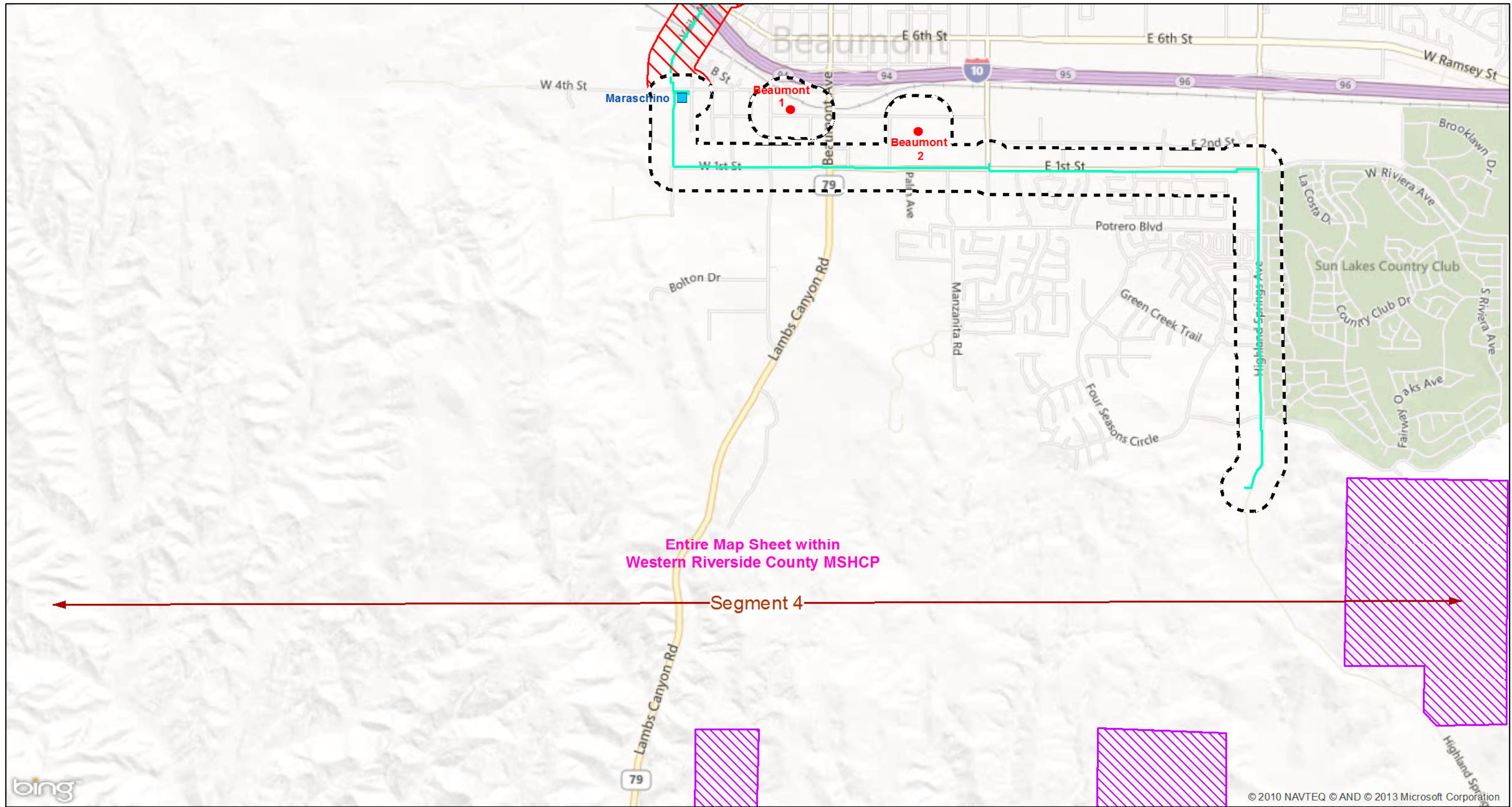
SOURCE: Bing Maps (c. 2010); SCE (5/2012, 3/2013); Morongo Band of Mission Indians (7/2012); BIA (10/2009); County of Riverside (2006); Coachella Valley (2010); BLM (2010); USFWS (various)
I:\SCE1110\GIS\MXD\Biology\CritHab_LandMgmt_PEA.mxd (7/2/2013)

FIGURE 4.4-2
Sheet 5 of 11



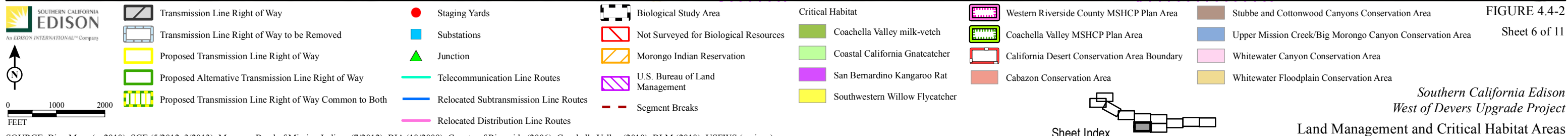
Southern California Edison
West of Devers Upgrade Project
Land Management and Critical Habitat Areas

This Page Intentionally Left Blank



Entire Map Sheet within
Western Riverside County MSHCP

Segment 4



SOURCE: Bing Maps (c. 2010); SCE (5/2012, 3/2013); Morongo Band of Mission Indians (7/2012); BIA (10/2009); County of Riverside (2006); Coachella Valley (2010); BLM (2010); USFWS (various)

I:\SCE1110\GIS\MXD\Biology\CritHab_LandMgmt_PEA.mxd (7/2/2013)

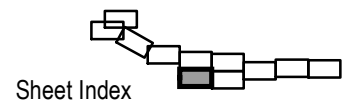
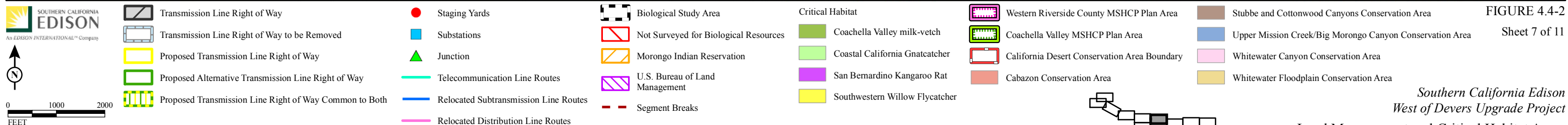
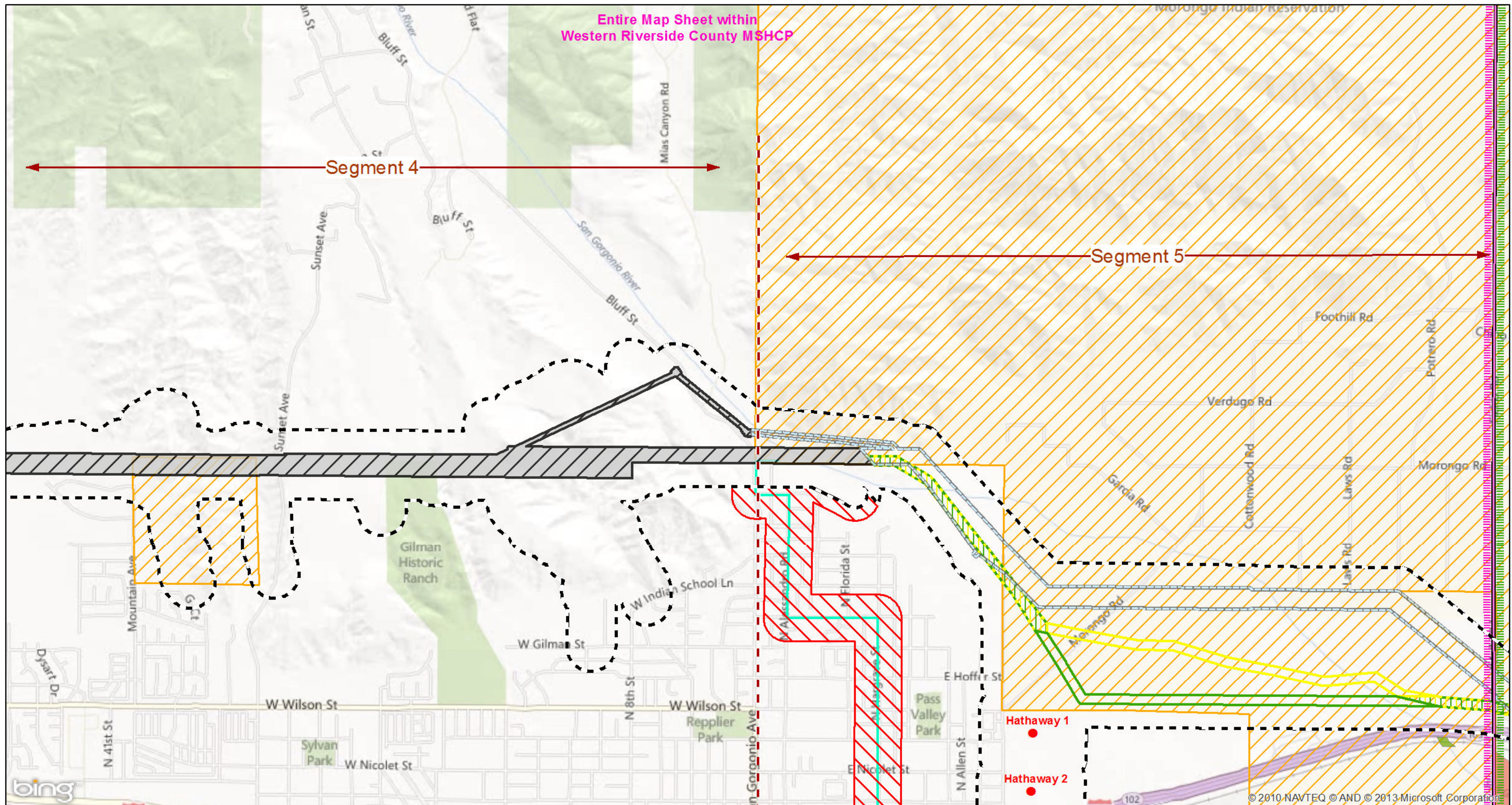


FIGURE 4.4-2
Sheet 6 of 11
Southern California Edison
West of Devers Upgrade Project
Land Management and Critical Habitat Areas

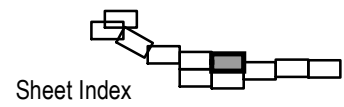
This Page Intentionally Left Blank



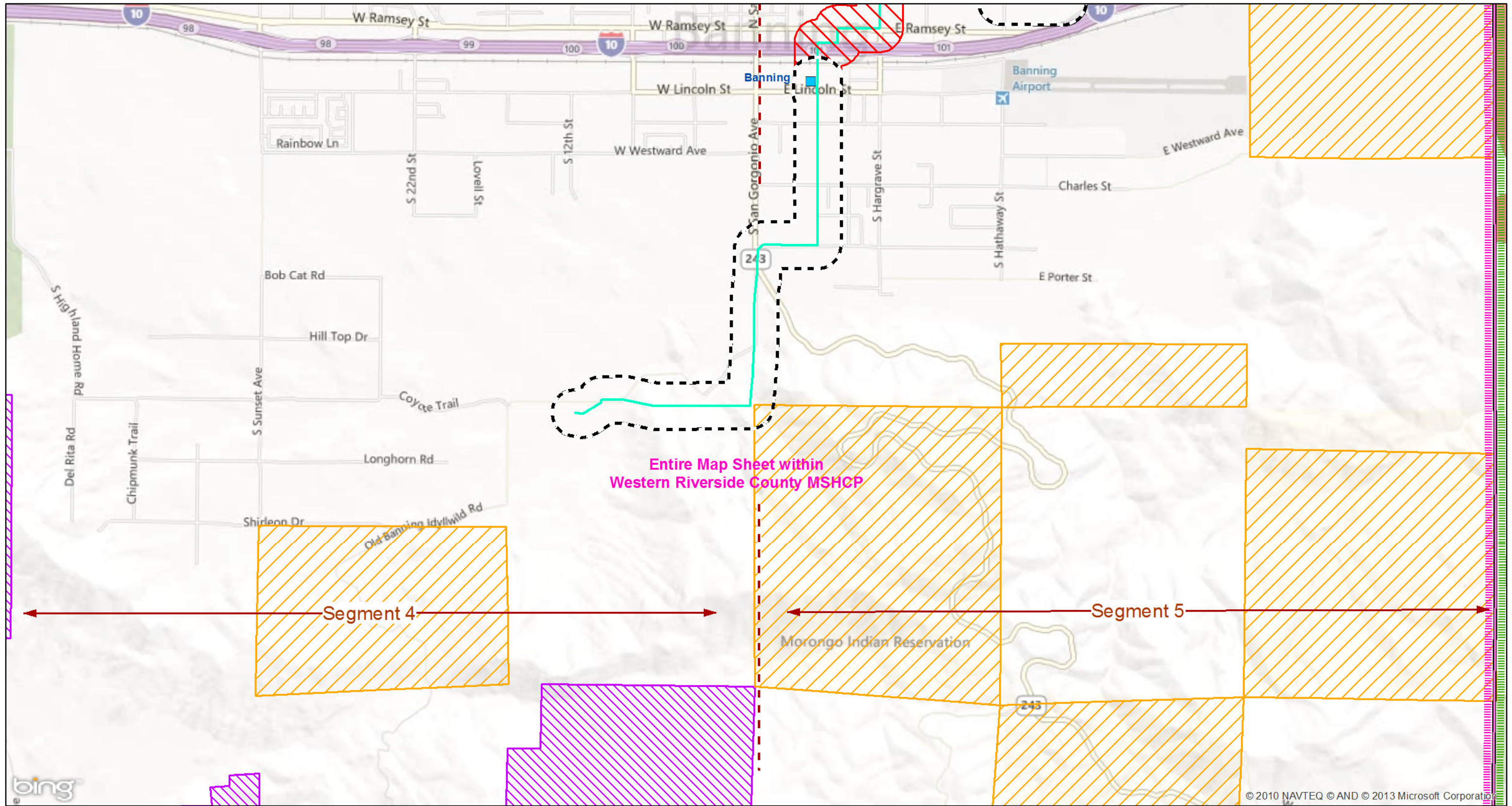
SOURCE: Bing Maps (c. 2010); SCE (5/2012, 3/2013); Morongo Band of Mission Indians (7/2012); BIA (10/2009); County of Riverside (2006); Coachella Valley (2010); BLM (2010); USFWS (various)
 I:\SCE1110\GIS\MXD\Biology\CritHab_LandMgmt_PEA.mxd (7/2/2013)

FIGURE 4.4-2
 Sheet 7 of 11

Southern California Edison
 West of Devers Upgrade Project
 Land Management and Critical Habitat Areas



This Page Intentionally Left Blank

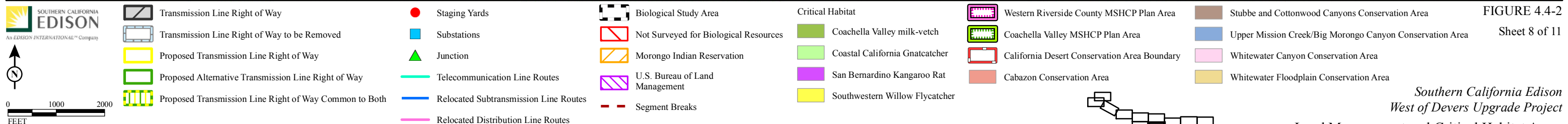


Entire Map Sheet within Western Riverside County MSHCP

Segment 4

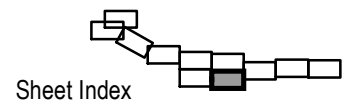
Segment 5

Morongo Indian Reservation



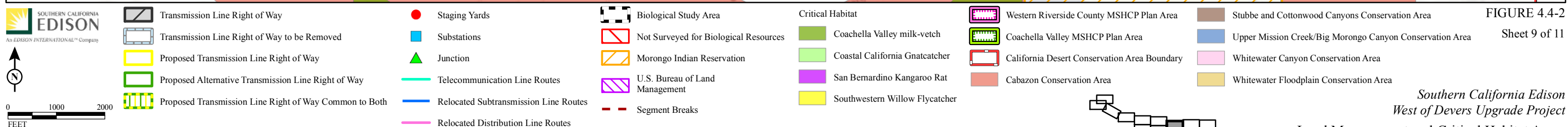
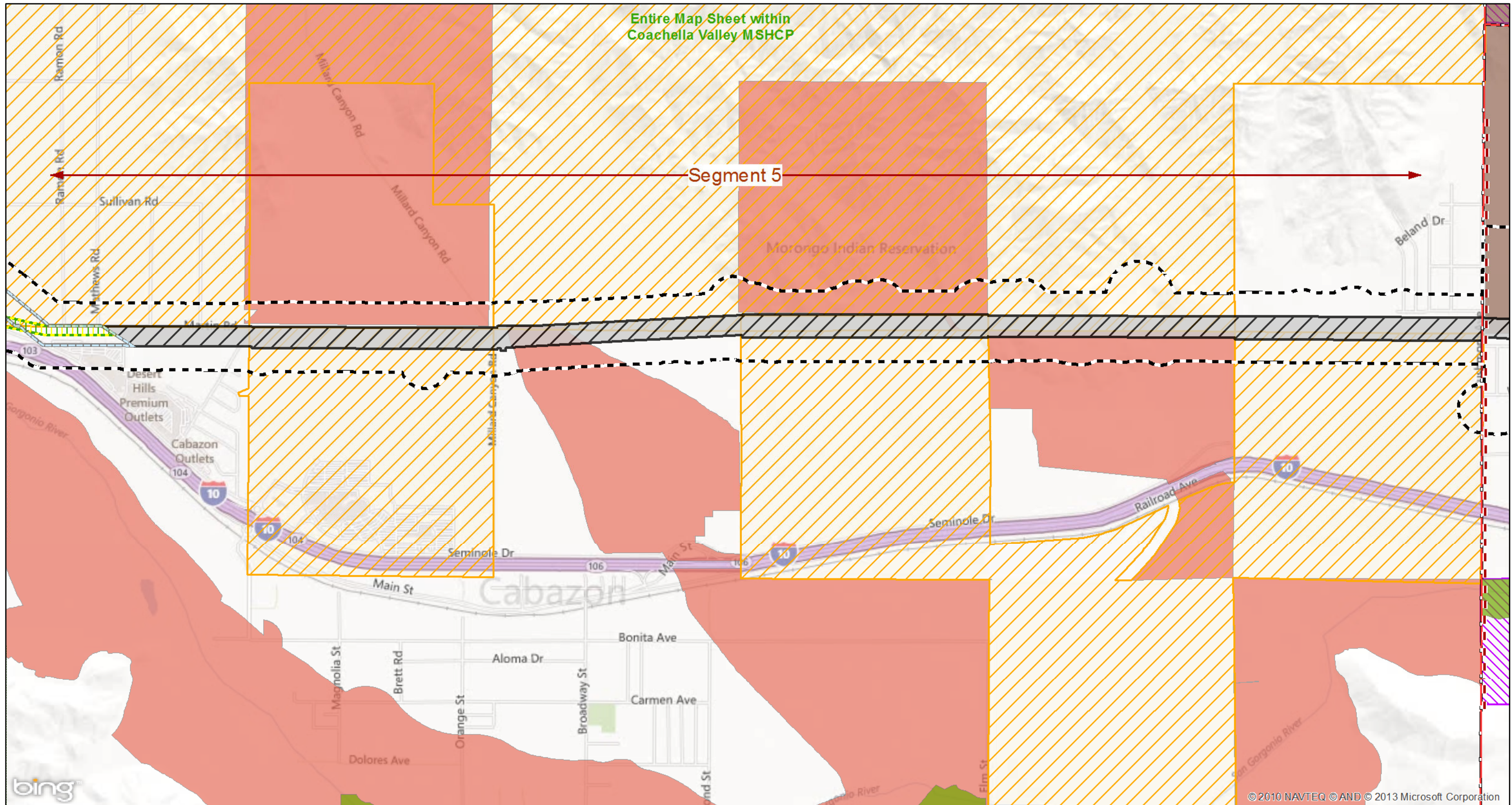
SOURCE: Bing Maps (c. 2010); SCE (5/2012, 3/2013); Morongo Band of Mission Indians (7/2012); BIA (10/2009); County of Riverside (2006); Coachella Valley (2010); BLM (2010); USFWS (various)
 I:\SCE1110\GIS\MXD\Biology\CritHab_LandMgmt_PEA.mxd (7/2/2013)

FIGURE 4.4-2
 Sheet 8 of 11



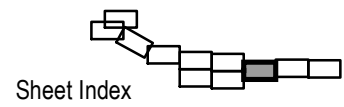
Southern California Edison
 West of Devers Upgrade Project
 Land Management and Critical Habitat Areas

This Page Intentionally Left Blank



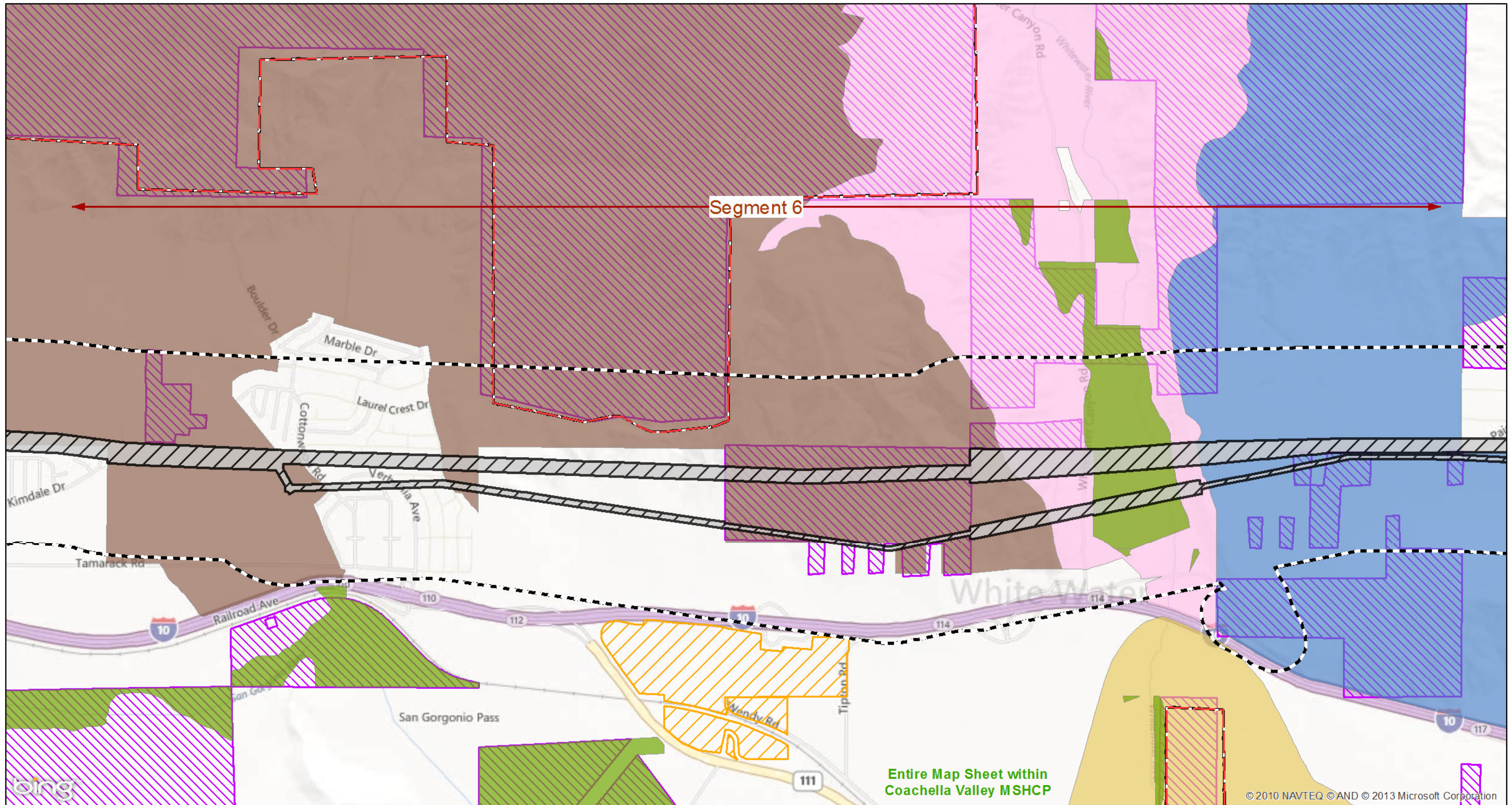
SOURCE: Bing Maps (c. 2010); SCE (5/2012, 3/2013); Morongo Band of Mission Indians (7/2012); BIA (10/2009); County of Riverside (2006); Coachella Valley (2010); BLM (2010); USFWS (various)
 I:\SCE1110\GIS\MXD\Biology\CritHab_LandMgmt_PEA.mxd (7/2/2013)

FIGURE 4.4-2
 Sheet 9 of 11



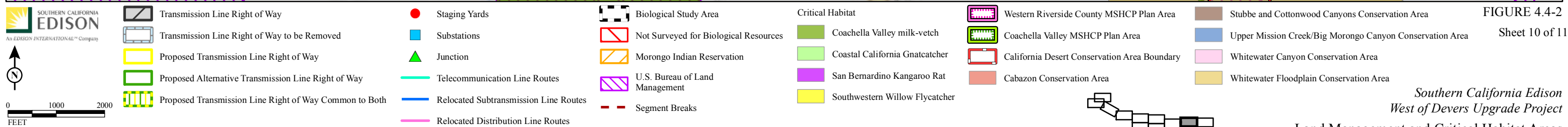
Southern California Edison
 West of Devers Upgrade Project
 Land Management and Critical Habitat Areas

This Page Intentionally Left Blank



Entire Map Sheet within Coachella Valley MSHCP

© 2010 NAVTEQ © AND © 2013 Microsoft Corporation

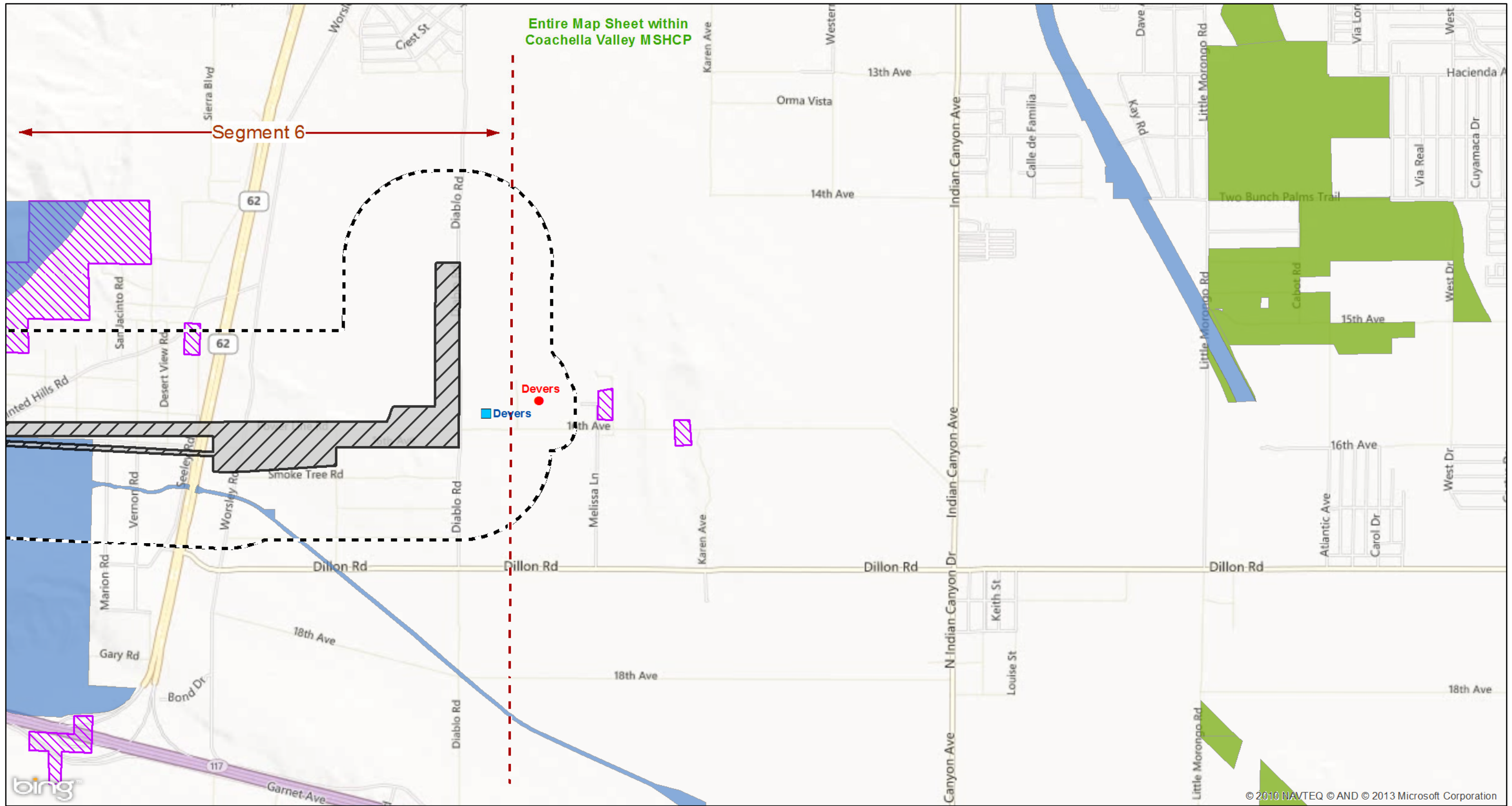


SOURCE: Bing Maps (c. 2010); SCE (5/2012, 3/2013); Morongo Band of Mission Indians (7/2012); BIA (10/2009); County of Riverside (2006); Coachella Valley (2010); BLM (2010); USFWS (various)

I:\SCE1110\GIS\MXD\Biology\CritHab_LandMgmt_PEA.mxd (7/2/2013)

FIGURE 4.4-2

This Page Intentionally Left Blank



© 2010 NAVTEQ © AND © 2013 Microsoft Corporation

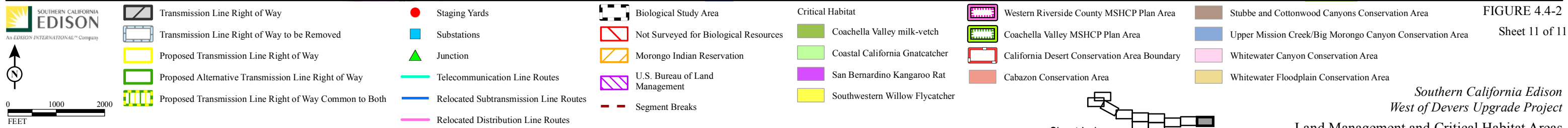
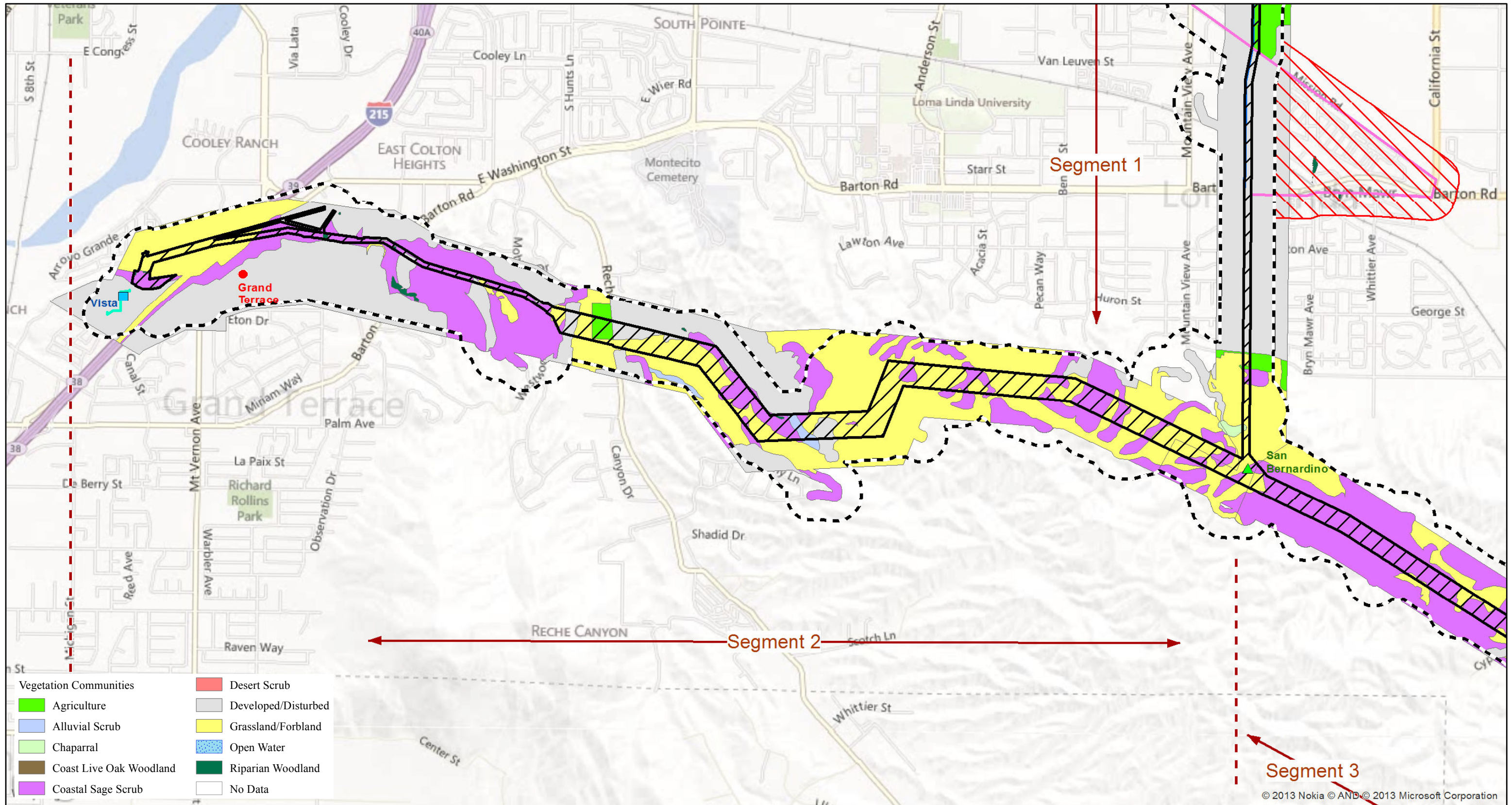


FIGURE 4.4-2

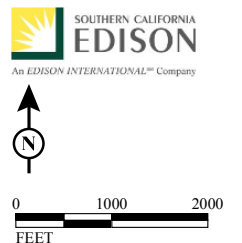
SOURCE: Bing Maps (c. 2010); SCE (5/2012, 3/2013); Morongo Band of Mission Indians (7/2012); BIA (10/2009); County of Riverside (2006); Coachella Valley (2010); BLM (2010); USFWS (various)

I:\SCE1110\GIS\MXD\Biology\CritHab_LandMgmt_PEA.mxd (7/2/2013)

This Page Intentionally Left Blank

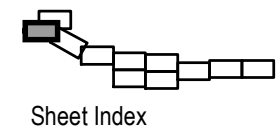


© 2013 Nokia © AND © 2013 Microsoft Corporation



LEGEND

Transmission Line Right of Way	Staging Yards	West of Devers Study Area
Transmission Line Right of Way to be Removed	Substations	Not Surveyed for Biological Resources
Proposed Transmission Line Right of Way	Junction	Morongo Indian Reservation
Proposed Alternative Transmission Line Right of Way	Telecommunication Line Routes	U.S. Bureau of Land Management
Proposed Transmission Line Right of Way Common to Both	Relocated Subtransmission Line Routes	Segment Breaks
	Relocated Distribution Line Routes	



SOURCE: Bing Maps (c. 2010); SCE (5/2012, 3/2013); Morongo Band of Mission Indians (7/2012); BIA (10/2009)
 I:\SCE1110\GIS\MXD\Biology\Vegetation_PEA.mxd (10/2/2013)

FIGURE 4.4-3
 Sheet 1 of 11

Southern California Edison
West of Devers Upgrade Project
 Land Cover

This Page Intentionally Left Blank

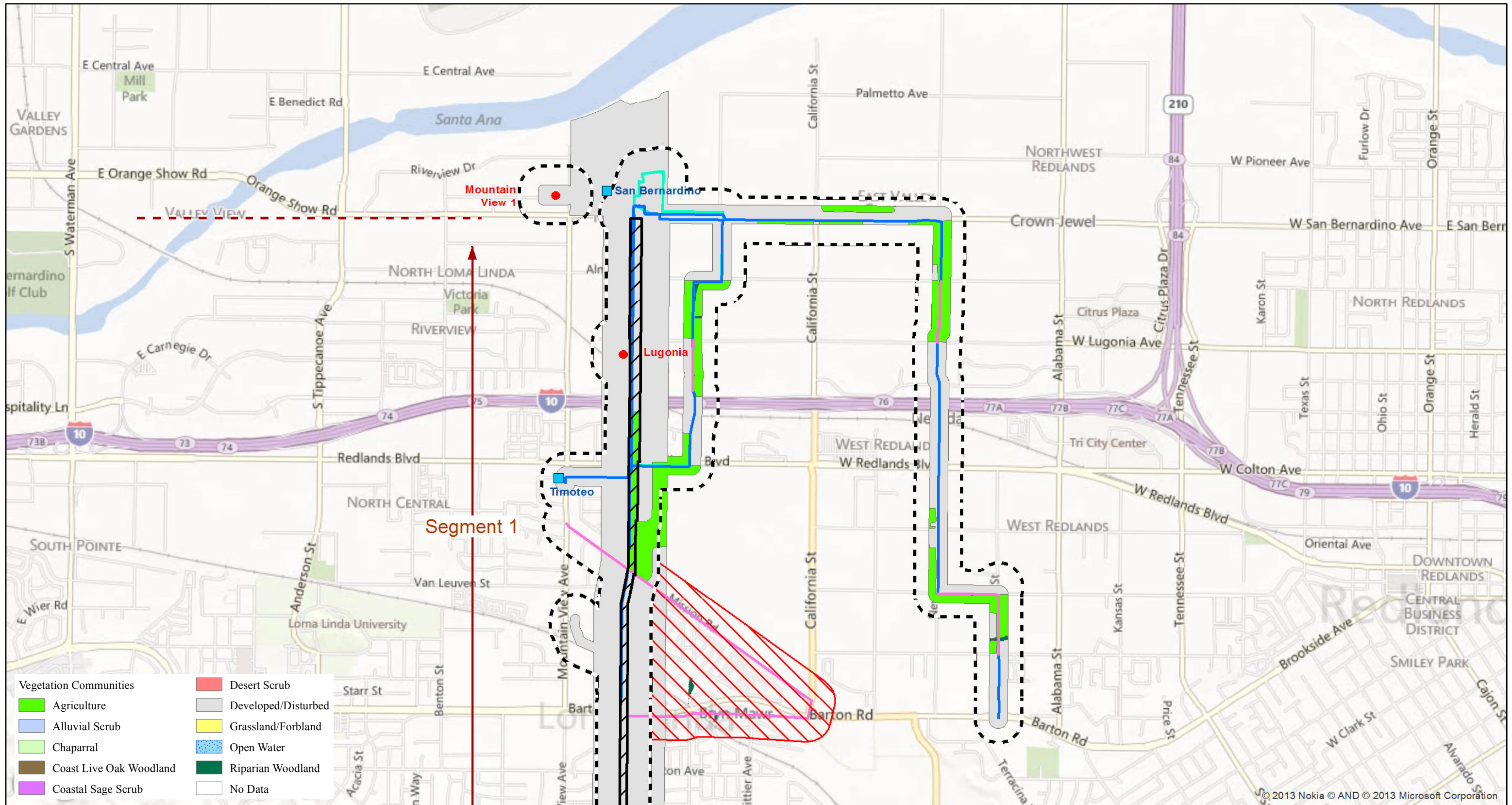
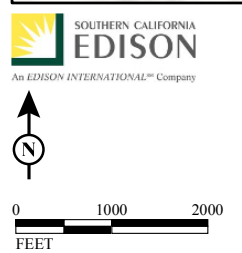
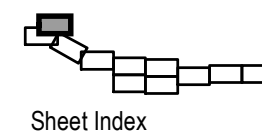


FIGURE 4.4-3



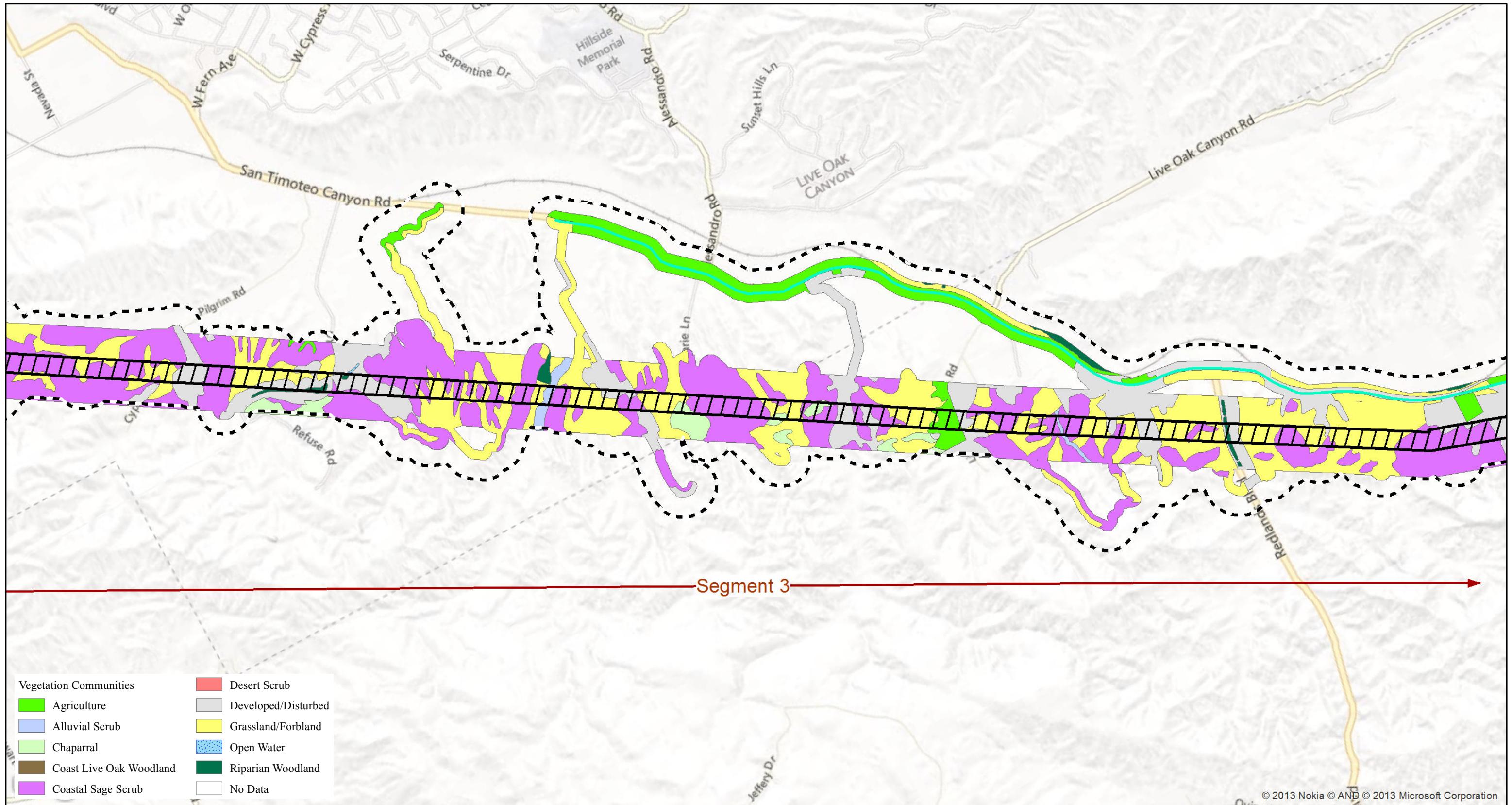
LEGEND

- | | | |
|--|---------------------------------------|---------------------------------------|
| Transmission Line Right of Way | Staging Yards | West of Devers Study Area |
| Transmission Line Right of Way to be Removed | Substations | Not Surveyed for Biological Resources |
| Proposed Transmission Line Right of Way | Junction | Morongo Indian Reservation |
| Proposed Alternative Transmission Line Right of Way | Telecommunication Line Routes | U.S. Bureau of Land Management |
| Proposed Transmission Line Right of Way Common to Both | Relocated Subtransmission Line Routes | Segment Breaks |
| | Relocated Distribution Line Routes | |



Sheet Index

This Page Intentionally Left Blank



© 2013 Nokia © AND © 2013 Microsoft Corporation

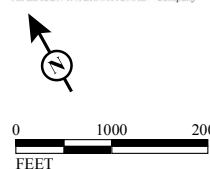
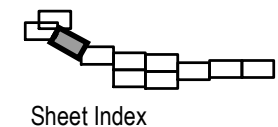


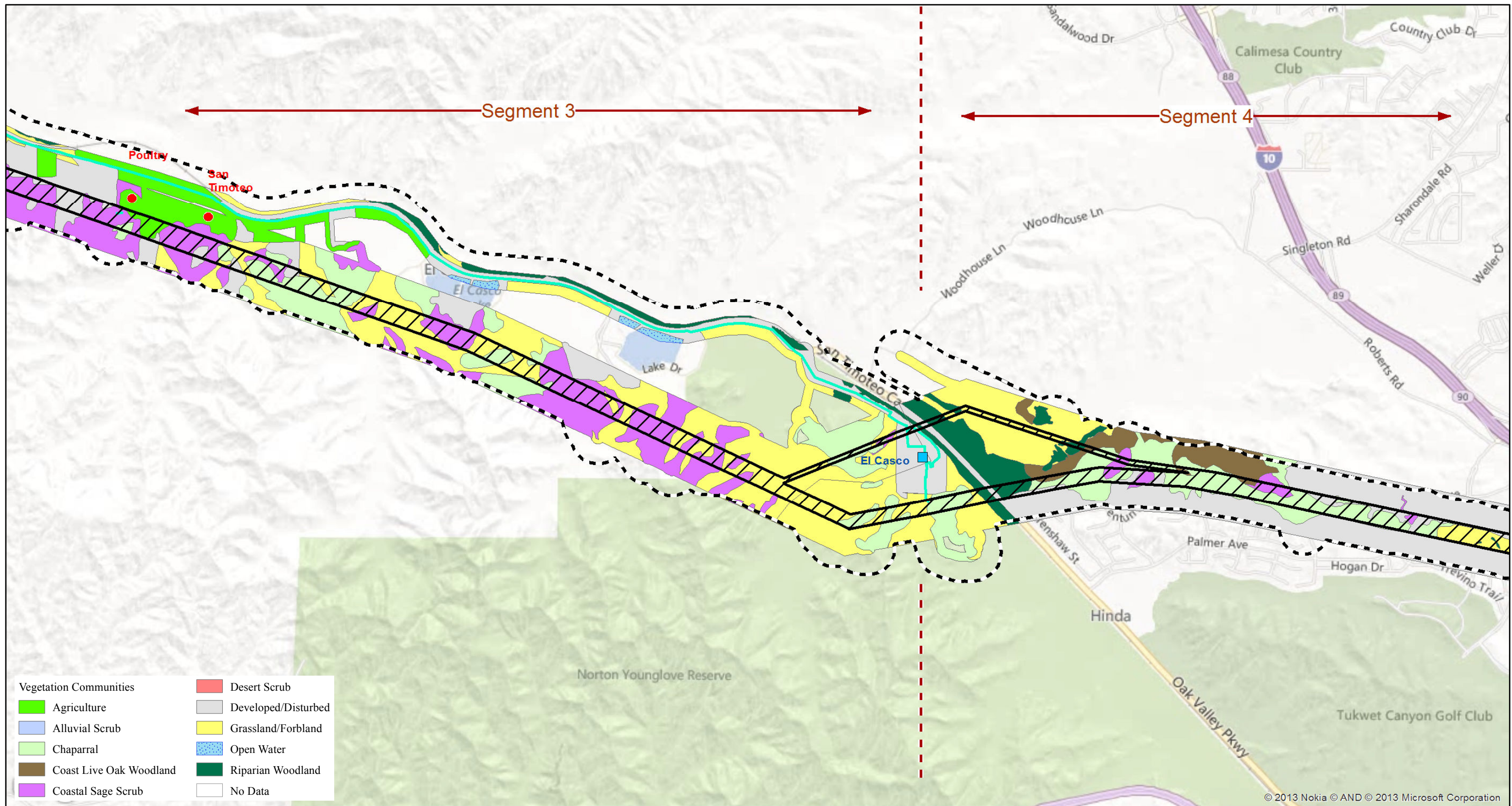
FIGURE 4.4-3
Sheet 3 of 11



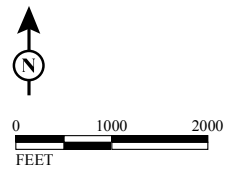
Southern California Edison
West of Devers Upgrade Project
Land Cover

SOURCE: Bing Maps (c. 2010); SCE (5/2012, 3/2013); Morongo Band of Mission Indians (7/2012); BIA (10/2009)
I:\SCE1110\GIS\MXD\Biology\Vegetation_PEA.mxd (10/2/2013)

This Page Intentionally Left Blank

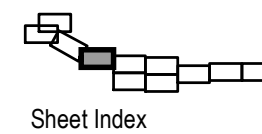


© 2013 Nokia © AND © 2013 Microsoft Corporation



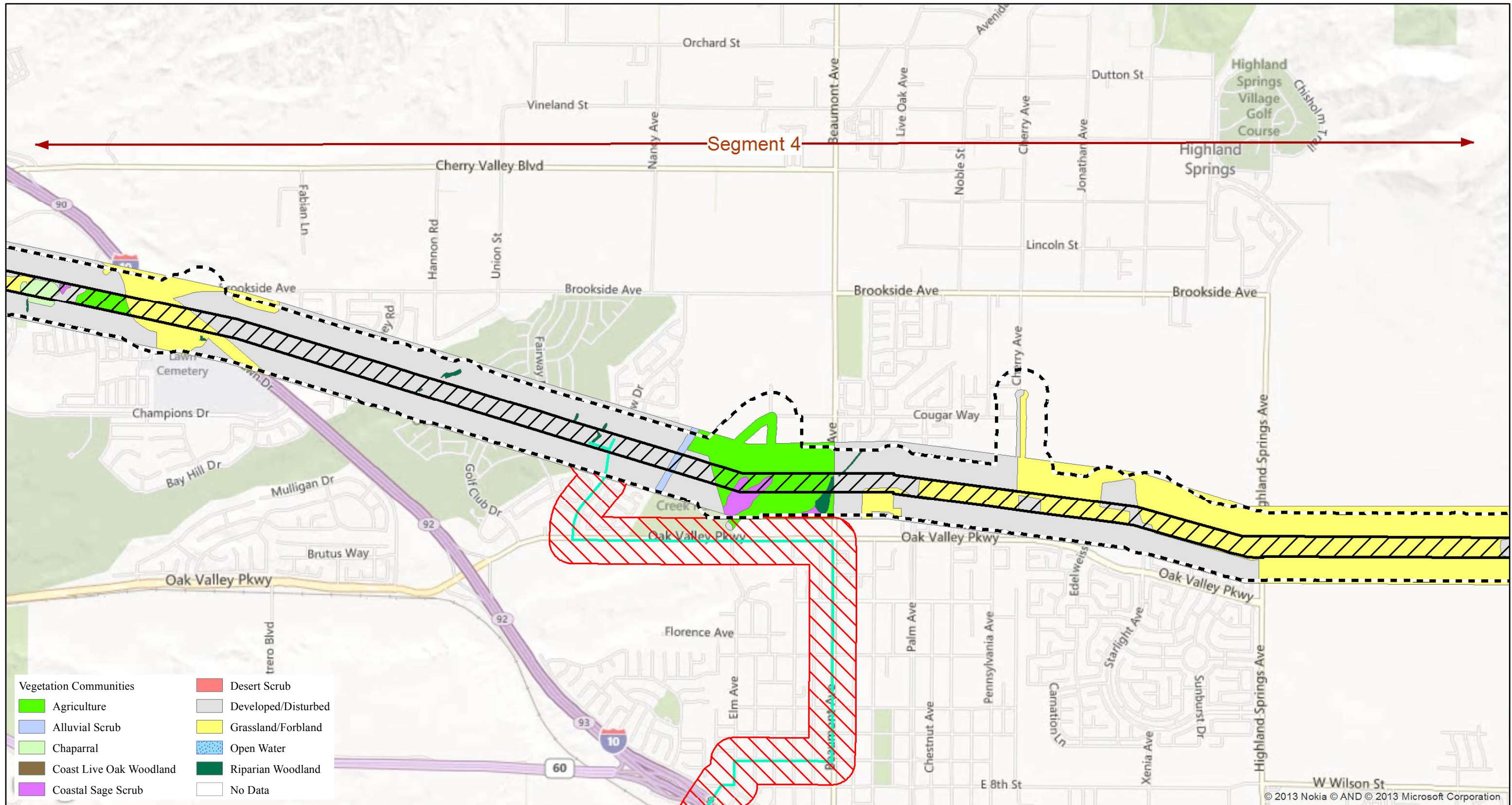
SOURCE: Bing Maps (c. 2010); SCE (5/2012, 3/2013); Morongo Band of Mission Indians (7/2012); BIA (10/2009)
 I:\SCE1110\GIS\MXD\Biology\Vegetation_PEA.mxd (10/2/2013)

FIGURE 4.4-3
 Sheet 4 of 11

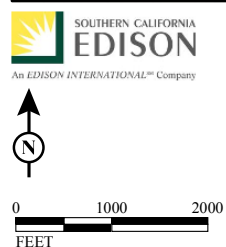


Southern California Edison
 West of Devers Upgrade Project
 Land Cover

This Page Intentionally Left Blank

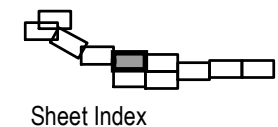


Vegetation Communities	
	Agriculture
	Alluvial Scrub
	Chaparral
	Coast Live Oak Woodland
	Coastal Sage Scrub
	Desert Scrub
	Developed/Disturbed
	Grassland/Forland
	Open Water
	Riparian Woodland
	No Data



LEGEND

- Transmission Line Right of Way
- Transmission Line Right of Way to be Removed
- Proposed Transmission Line Right of Way
- Proposed Alternative Transmission Line Right of Way
- Proposed Transmission Line Right of Way Common to Both
- Staging Yards
- Substations
- Junction
- Telecommunication Line Routes
- Relocated Subtransmission Line Routes
- Relocated Distribution Line Routes
- West of Devers Study Area
- Not Surveyed for Biological Resources
- Morongo Indian Reservation
- U.S. Bureau of Land Management
- Segment Breaks



SOURCE: Bing Maps (c. 2010); SCE (5/2012, 3/2013); Morongo Band of Mission Indians (7/2012); BIA (10/2009)
 I:\SCE1110\GIS\MXD\Biology\Vegetation_PEA.mxd (10/2/2013)

FIGURE 4.4-3
 Sheet 5 of 11

This Page Intentionally Left Blank