



5020 Chesebro Road, Suite 200, Agoura Hills, CA 91301-2285
Tel. 818-597-3407 • Fax 818-597-8001 • www.aspeneg.com

PROJECT MEMORANDUM
SCE WEST OF DEVERS UPGRADE PROJECT

To: John Forsythe, Project Manager, CPUC
From: Vida Strong, Aspen Project Manager
Date: March 19, 2020
Subject: Monitoring Report #103: March 9 to March 15, 2020

Introduction

This report provides a summary of the construction and compliance activities associated with Southern California Edison’s (SCE) West of Devers (WOD) Upgrade Project. SCE self-performed work (NTPs #2 and #3) is essentially complete with the exception of substation equipment upgrades and minor tie-ins. 220 kV work (NTPs #4 and #5) is approximately 52% complete.

CPUC Environmental Monitor (EM): CPUC EM, Rosina Goodman, was onsite March 9 through 11, and CPUC EM, Jamie Miner, was onsite March 12 and 13.

CPUC Notices to Proceed (NTPs)

Table 1 summarizes the NTPs with construction for the WOD Upgrade Project. No additional NTPs are required.

Table 1 - NTPs

NTP #	Date Requested	Date Issued	Phase	Description
NTP #1	04/04/17	06/29/17	Material Yards	Construction or use of 10 Material Yards
NTP #2	05/18/17	06/29/17	Substation Upgrades	Upgrades to 5 existing Substations
NTP #3	06/05/17	08/10/17	Distribution, Subtransmission, and Telecom	Construction of the Distribution, Subtransmission, and Telecommunication portions of the Project
NTP #4	07/13/17	09/05/17	Transmission	Transmission Line Construction on private lands
NTP #5	08/07/17	03/29/18	Construction on BLM lands	Transmission Line construction on BLM lands

Construction & Compliance

A summary of construction and compliance activities is provided below by NTP.

Material Yards (NTP #1)

As defined in NTP #1, Project material yards (MY) include:

- Mountain View #1 MY
- Lugonia MY (not being used)
- Grand Terrace MY
- Poultry MY

- San Timoteo MY (not being used)
- Beaumont #1 MY (not being used)
- Beaumont #2 MY
- Matich MY
- Hathaway #2 MY (not being used)
- Devers MY

To date, all material yard pre-compliance materials associated with NTP #1 that have been submitted have been approved.

Summary of Construction Activity

1. For the currently approved MYs, all activities are being performed by the contractor operating out of each respective yard.
2. The Poultry MY is being utilized by Barnard Construction and Power Grade Incorporated as their primary base of operations and material/equipment storage location. Work associated with the Poultry MY included material/equipment deliveries and general yard maintenance throughout the monitoring period. Helicopter operations occurred out of the Poultry MY during the subject monitoring period.
3. The Matich MY is being utilized by Barnard Construction primarily for tubular steel pole (TSP) storage and by Wilson as their primary base of operations and material/equipment storage location. Work associated with the Matich MY included material/equipment deliveries throughout the monitoring period. Helicopter operations occurred out of the Matich MY during the subject monitoring period.
4. The Mountain View #1 MY is being utilized by Abercrombie Services as their primary base of operations for materials/equipment storage, mobilization, and maintenance.
5. The Beaumont #2 MY is being utilized by CJ/Aldridge Drilling as their primary base of operations for material/equipment storage, mobilization, and maintenance.
6. The Grand Terrace MY is being used primarily as a show-up location for project construction crews.
7. The Devers MY is being utilized by CJ/Aldridge, Abercrombie Services, and Power Grade for construction activities on Segment 6 for material/equipment deliveries.

Environmental Compliance

1. There were no SCE self-reported and no CPUC incidents documented for construction activities associated with NTP #1 throughout the monitoring period.
2. There were no SWPPP maintenance item and no corrective actions associated with NTP #1 recorded during the monitoring period. To date, there are no open SWPPP maintenance or corrective actions associated with NTP #1.
3. There were no reportable (> 1 gallon) or non-reportable (< 1 gallon) spills associated with NTP #1 identified during the monitoring period.
4. As of the end of the monitoring period, there are no active nests at locations associated with NTP #1 during the monitoring period. If required, nest management, including establishment of buffers and the removal of inactive non-special-status bird species' nests, is being implemented per the requirements of the Project Nesting Bird Management Plan (NBMP). No nests were removed during the subject reporting period.
5. No special-status species were observed or identified at locations associated with NTP #1 during the monitoring period.

Substations (NTP #2)

Five substations are identified for improvements in NTP #2. These include:

- Etiwanda Substation
- San Bernardino Substation
- Vista Substation
- El Casco Substation
- Devers Substation

To date, all pre-compliance materials associated with NTP #2 that have been submitted have been approved.

Summary of Construction Activity

1. For the currently approved substation components, all work is being managed by Circle Wood Services with construction support from TTR Substations, Roberson Waite, Cunningham-Davis, and SCE crews. Wire stringing connections and wreck-out activities between the project alignment and locations within the substations are being performed by Abercrombie Services.
2. Construction activities at the San Bernardino Substation included installing temporary grounding, removing existing conductor from disconnects, boring new holes for foundations, secondary wiring for CB622, primary conductor preparation for overhead installations, pouring new foundations for CCVT installation, and finish installation of new Line Drops.
3. Construction activities at the Etiwanda Substation included relocating SEL-351 relays to Z90 and Z9.
4. Construction activities at the Devers Substation included BMP installation; conductor removal from CB 6082 and 6083, CCVTs, and risers; and line disconnect.
5. No construction activities occurred at the El Casco or Vista Substations.

Environmental Compliance

1. There were no SCE self-reported and no CPUC incidents documented for construction activities associated with NTP #2 throughout the monitoring period.
2. There were no SWPPP maintenance items or corrective actions associated with NTP #1 recorded during the monitoring period. To date, there are no open SWPPP maintenance or corrective actions associated with NTP #2.
3. There were no reportable (>1 gallon) or non-reportable (<1 gallon) spills associated with NTP #2 identified during the monitoring period.
4. As of the end of the monitoring period, there are four active nests located within work areas associated with NTP #2. These include red-tailed hawk, common raven, and great horned owl. If required, nest management, including establishment of buffers and the removal of inactive non-special-status bird species' nests, is being implemented per the requirements of the Project NBMP. There is one red-tailed hawk nest buffer reduction within the San Bernardino Substation during the subject reporting period. No nests were removed during the subject reporting period.
5. No new special status species were observed or identified at locations associated with NTP #2 during the monitoring period.

Distribution, Subtransmission, and Telecommunication Work (NTP #3)

NTP #3 included distribution, subtransmission, and telecommunication improvements as presented below. These construction activities have been essentially completed, with minor follow up required in response to Project activities.

Distribution improvements included the following:

- Dental 12-kV Distribution Circuit (Dental Circuit)
- Intern 12-kV Distribution Circuit Underbuild (Intern Circuit)
- Reconductor on Juanita Street (Juanita Reconductor)

Subtransmission improvements included the following:

- Removal of San Bernardino–Redlands-Timoteo and the San Bernardino–Redlands-Tennessee 66-kV Lines (Timoteo-Tennessee Removal)
- Relocation of San Bernardino–Redlands-Timoteo 66-kV Lines (Timoteo Relocation)
- Relocation of San Bernardino–Redlands-Tennessee 66-kV Lines (Tennessee Relocation)

Telecommunication improvements included the following:

- San Bernardino Substation Connection to Redlands Inland Empire District Office (San Bernardino Connection)
- Timoteo-Redlands District Office Fiber Optic Cable Connection (Timoteo-Redlands Connection)
- El Casco Substation Connection to Vista Moreno OPGW (El Casco Connection), Segment 3
- Maraschino Substation Connection to Devers-Valley OPGW (Maraschino Connection)
- El Casco–Banning Connection to Devers-Vista Skywrap (El Casco–Banning Connection), Segment 4
- Banning Substation Connection to Devers-Valley OPGW (Banning Connection), Segment 6

Summary of Construction Activity

1. For the currently approved subtransmission and distribution components, construction activities are being performed by Abercrombie Services and SCE crews. No construction activities associated with NTP #3 occurred during the monitoring period.
2. As summarized below, construction of the NTP #3 primary components is essentially complete with the exception of minor tie-ins.
 - For distribution components, all 19 12-kV poles have been framed, all 12 12-kV underground vaults have been installed, and 7,430 feet of 12-kV duct bank (conduit) and 10,760 feet of 12-kV conductor wire has been installed.
 - For subtransmission components, 119 of 119 66-kV light weight TSPs have been erected, 19 of 19 TSPs have been erected, and 25,610 feet of 66-kV wire has been installed. Both the Timoteo and Tennessee circuits have been energized. Wreck-out of the existing subtransmission infrastructure has been completed.

Environmental Compliance

1. There were no SCE self-reported or CPUC incidents documented for construction activities associated with NTP #3 throughout the monitoring period.

2. There were no SWPPP maintenance items or corrective actions associated with NTP #3 recorded during the monitoring period. To date, there are no open SWPPP maintenance items or corrective actions associated with NTP #3.
3. There were no reportable (>1 gallon) or non-reportable (<1 gallon) spills associated with NTP #3 identified during the monitoring period.
4. As of the end of the monitoring period, there is one active nest (golden eagle) nest located within work areas associated with NTP #3 for which the required buffer has been established; however, no work is planned for the area. If required, nest management, including establishment of buffers and the removal of inactive non-special-status bird species' nests is being implemented per the requirements of the Project NBMP. No nests were removed during the subject reporting period.
5. No special-status species were observed or identified at locations associated with NTP #3 during the monitoring period.

Transmission Work (NTP #4)

NTP #4 includes six transmission line segments, identified as Segments 1 through 6, generally moving from west to east.

To date, pre-compliance materials associated with NTP #4, Segments 1 through 6, have been submitted and approved.

Summary of Construction Activity

1. For the currently approved transmission components, Power Grade Incorporated is conducting access road maintenance/stabilization, BMP installation, vegetation removal, and site grading. CJ/Aldridge Drilling is performing foundation work. Abercrombie Services is assembling and erecting new towers, and conducting wire operations with support from Summit Helicopters. Wilson Construction is conducting wire removal operations. Cunningham Davis Corporation is removing existing towers and foundations. Ancillary telecommunication work approved in NTP #4 is being performed by SCE crews.
2. Work activities associated with Segment 1 included wire wreck-out activities (ground and helicopter) at Construction Areas 1X03 through 1E28.
3. Work activities associated with Segment 2 included BMP maintenance at Construction Area 2N32.
4. Work activities associated with Segment 3 included: Foundation activities at Construction Area 3S03; foundation compaction and final grade at Construction Areas 3X51 and 3X53; and BMP maintenance at Construction Area 3S03.
5. Work associated with Segment 4 included: Foundation activities at Construction Areas 4X06 and 4X08 through 4X10; tower assembly at Construction Areas 4X30 through 4X32; stripping forms and grading on the access road to Construction Area 4X04; and setting snub poles and anchors at Construction Area WSS-4X27-4X29 (see Photo 1).
6. Work associated with Segment 5 (which includes sites within Morongo lands along Segment 5 as reported by SCE) included: Vegetation clearing and grading at Construction Areas 5X01, 5X08, and 5X14; tower and wire wreck-out activities (ground and helicopter) at Construction Areas 5X14 through 5X29 and M73-T3 through M74-T4 (see Photo 2); tower assembly at Construction Areas 5X07, 5X09, 5X10, 5X29, and 5X30; guard pole installation at Construction Areas 5X01 and 5X16; setting snubs and declipping wire at Construction Areas WSS-5X15-5X16, 5X16, and M71-T3; BMP maintenance at Construction Areas 5X05, 5X10, and 5X14; and grounding gates at Construction Area 5X47.

7. Work associated with Segment 6 (non-BLM lands) included: Vegetation clearing at Construction Areas 6X42 and 6X46 (see Photo 3); backdrain installation, backfilling, and grading at Construction Area 6N30; foundation activities at Construction Areas 6X08, 6N32, and 6N34; guard pole installation at Construction Areas 6X46 and M7-T3; fiber optic splicing at Construction Area 6S26; and BMP maintenance at Construction Areas 6X09-6X10 and 6X46.
8. 220 kV construction updates from SCE are being provided on a bi-weekly basis. The next update will be provided on March 31. As of March 17, construction progress associated with NTP #4 is as follows:
 - Grading for foundation installation has been completed at 456 of 469 sites.
 - Foundations are completed for 351 of 386 lattice towers and 68 of 83 TSPs.
 - Erection of 168 of 386 lattice towers and 59 of 83 TSPs have been completed.
 - Erection of 60 of 94 temporary shoofly locations has been completed.
 - Stringing of approximately 3.7 of 8.0 circuit miles of shoofly conductor, 65.1 of 184.0 circuit miles of mainline conductor, and 31.67 of 99.0 circuit miles of OPGW fiber has been completed.
 - Demolition of 155 of 602 existing structures and 107 of 415 existing foundations has been completed.
 - Wire wreck-out has been completed along 37 circuit miles of 184.
 - 20 of 304 sites have been restored and hydroseeded.
9. The first required outages (Project Move 1 and Project Move 2) were completed in 2018. Project Moves 3 and 4 were completed in 2019. Move 5 in Segments 1, 2, 5, and 6 began on August 5, 2019 and was completed January 15, 2020. Move 6 in Segment 2 began on October 14, 2019 and was completed on February 14, 2020. Move 7 in Segment 1 began on February 24, 2020 and is expected to be completed by March 18, 2020. Move 8, in all segments except Segment 2, began on March 9, 2020 and is expected to be completed by August 14, 2020.

Environmental Compliance

1. There was one SCE self-reported incident and three observations of non-project activity during the subject monitoring period. On March 9, road conditions on the access road to Construction Area 6N32 caused a pick-up truck hauling a skid steer to become stuck and enter an unapproved work area (see Photo 4). In order to secure the truck and trailer into a safe position, the skid steer was removed from the trailer within the same unapproved work area on the upland side of the access road. The onsite biologist conducted a thorough sweep of the areas required to extract the trailer, documented the event, and took photographs of the impacted desert scrub vegetation. SCE issued a Level 1 incident. The observations were for non-project related construction activities and vehicles on the right-of-way in Segment 5.
2. On March 16, the CPUC EM observed construction vehicles, equipment, and materials staged outside of any approved disturbance areas between Construction Areas 5X28 and 5X29 (see Photo 5). The Project Field Contract Representative was immediately notified of the observation. The equipment was being used for wire wreck-out activities and could not be safely moved. SCE requested a TEWS to continue to use the area for wire wreck-out activities. The CPUC EM issued a Level 1 incident Report for equipment staged outside of approved disturbance areas.
3. There were 3 SWPPP maintenance items associated with NTP #4 recorded during the monitoring period for sediment build-up on prowattles at Construction Areas in Segments 4 and 5. To date, there are no open SWPPP maintenance items or corrective actions associated with NTP #4.

4. There were no reportable (>1 gallon) or non-reportable (<1 gallon) spills associated with NTP #4 identified during the monitoring period.
5. Meetings to review helicopter flight tracks with SCE generally occur every two weeks. Flight tracks are reviewed to monitor compliance with local jurisdiction construction work hours and sensitive receptor avoidance, including residences, schools, and nesting bird avoidance areas. There were no helicopter tracks to review during scheduled helicopter tracks review meeting on March 5, 2020. The next flight track review will take place on March 19, 2020.
6. As of the end of the monitoring period, there are 71 active nests associated with NTP #4 during the monitoring period. These nests include great horned owl, barn owl, burrowing owl, Anna's hummingbird, verdin, California thrasher, common raven, greater roadrunner, cactus wren, northern mockingbird, red-shouldered hawk, and red-tailed hawk. Buffers have been established per the Project NBMP. If required, nest management, including establishment of buffers and the removal of inactive non-special-status bird species' nests is being implemented per the requirements of the Project NBMP. There are eleven nest buffer reductions associated with NTP #4 during the monitoring period for red-tailed hawk, greater roadrunner, cactus wren, verdin, common raven, burrowing owl, and great horned owl. No nests were removed during the subject reporting period.
7. There were two special-status species observed or identified at locations associated with NTP #4 during the monitoring period. These included peregrine falcon and rosy boa.
8. There were three new woodrat middens identified on Segment 5. A 10-foot Environmentally Sensitive Area (ESA) avoidance buffer was staked per the Special-status Small Mammals Avoidance and Minimization Plan. There were no woodrat midden relocations documented during the monitoring period.
9. SCE provided documentation of FAA filings for the Project on September 17 and September 26, 2018; FAA concurrence will be required prior to tower installation where applicable. Additional information was provided February 11, 2019. FAA recommended marker balls have been installed on the shoofly spans near El Casco Substation; from Construction Area 2N01 to 2N04, and 2N12 to 2N14 on Segment 2; and from Construction Area 6S27 to 6S28 on Segment 6. FAA lighting was installed at Construction Area 2N02.

Transmission Work BLM Lands (NTP #5)

NTP #5 includes the portion of one transmission line segment, identified as Segment 6, which traverses properties managed by the Bureau of Land Management (BLM). NTP #5 was approved by BLM on March 29, 2018. The preconstruction compliance package for BLM lands was deemed acceptable by BLM on February 5, 2019.

Summary of Construction Activity

1. For the currently approved transmission components, Power Grade Incorporated is conducting access road maintenance/stabilization, BMP installation, vegetation removal, and site grading. CJ/Aldridge Drilling is performing foundation work. Abercrombie Services is assembling and erecting new towers, and conducting wire operations with support from Summit Helicopters. Wilson Construction is conducting wire wreck-out activities. Cunningham Davis Corporation is removing existing towers and foundations.
2. Work activities associated with Segment 6 (BLM lands) included backdrain installation, backfilling, and grading at Construction Area 6N30.

Environmental Compliance

See NTP #4 discussion above for environmental compliance activities.

Temporary Extra Workspaces (TEWS) and Minor Project Refinements (MPRs)

Two TEWS and no MPRs were approved during the subject monitoring period. Table 2 summarizes the TEWS and MPRs for the WOD Upgrade Project to date.

Table 2 – TEWS & MPRs
(Updated 03/19/20)

TEWS / MPR	Date Requested	Date Issued	Phase	Description
Temporary Extra Workspaces (TEWS)				
TEWS #1	10-12-17	10-19-17	Maraschino Connection	Access to Beaumont Cherry Valley District water hydrant meter located near the intersection of Highland Springs Avenue and Crooked Creek, Beaumont.
TEWS #2	11-13-17	11-21-17	El Casco–Banning Connection	Water source on Oak Valley Boulevard.
TEWS #3	12-15-17	12-15-17	Banning Connection	Access to existing poles off of Lincoln Street.
TEWS #4	12-18-17	12-18-17	Banning Connection	Access to existing poles off of Wesley Street.
TEWS #5	12-20-17	12-21-17	Banning Connection	Access to existing poles at intersection of Wesley Street and Old Idyllwild Road.
TEWS #6	6-13-18	6-13-18	Timoteo Relocation	Extra workspace to facilitate erection of TSP #4696058 at intersection of Redlands Boulevard and Bryn Mawr Street.
TEWS #7	7-27-18	7-30-18	Timoteo Relocation	Extra workspace to facilitate wire pulling activities along Research Drive and Almond Avenue.
TEWS #8	8-27-18	8-28-18	Dental/Intern Circuits	DENIED AND RESCINDED – Extra workspace to facilitate construction along Mission Road.
TEWS #9	10-18-18	10-19-18	Timoteo Relocation	Extra workspace for walking path at Bryn Mawr and I-10.
TEWS #10	11-05-18	11-05-18	Timoteo Relocation	Extra workspace along Barton and Mountain View Roads for cutover operations.
TEWS #11	01-30-19	01-31-19	Timoteo Relocation	Extra workspace to facilitate the removal of fiber optic cable from overhead poles north along Mountain View Avenue and east along Redlands Boulevard.
TEWS #12	02-06-19	02-07-19	Timoteo Relocation	Extra workspace along Mountain View Avenue for subtransmission pole removal.
TEWS #13	02-26-19	02-26-19	Segment 3	Temporary access road detour for vehicle and equipment travel to/from San Timoteo Canyon Road and Tower Site 3X41.
TEWS #14	05-13-19	05-14-19	Banning Connection	Extra workspace along the east side of south Alola Street, City of Banning.
TEWS #15	05-16-19	05-17-19	Segment 1	HLZ and temporary staging area for construction vehicles, materials, and equipment.
TEWS #16	07-24-19	07-24-19	Segment 2	Concrete V-ditch south of 3012 Prado Lane, accessible from approved access roads to Construction Area 2X18.
TEWS #17	08-07-19	08-07-19	Segment 6	Access road for guard pole installation near Construction Area 6S15.
TEWS #18	08-16-19	08-16-19	Segment 6	Helicopter landing zone and temporary staging area for construction vehicles, materials, and equipment.

TEWS / MPR	Date Requested	Date Issued	Phase	Description
TEWS #19	09-05-19	09-05-19	Segment 5	Mobile guard structure on an existing road to Construction Area SF501 for wire stringing activities.
TEWS #20	09-27-19	09-30-19	Segment 6	Mobile guard structure on existing access road to Construction Areas 6S20 and 6S21 for wire stringing activities.
TEWS #21	12-11-19	12-12-19	Etiwanda Substation	Extra workspace within the existing concrete switchrack trench inside the active substation.
TEWS #22	01-31-20	01-31-20	Segment 2	Extra workspace adjacent to Construction Area 2N35 for staging and operating a wire puller.
TEWS #23	03-11-20	03-12-20	Segment 6	Access road near 6N38 for guard structure.
TEWS #24	03-17-20	03-17-20	Segment 5	Extra workspace for staging wire stringing equipment.
Minor Project Refinements (MPRs)				
MPR #1	11-17-17	11-22-17	Maraschino Connection	Revisions to the amount of new underground telecom construction.
MPR #2	12-13-17	12-15-17	Maraschino Connection	Addition of two vault work areas on Highland Springs Road.
MPR #3	12-21-17	12-28-17	El Casco–Banning Connection	Adjustments to alignment along Oak Valley Parkway.
MPR #4	12-27-17	1-3-18	Maraschino/ El Casco–Banning Connections	Continued use of two fire hydrants previously approved as TEWS #1 and TEWS #2.
MPR #5	1-16-18	1-22-18	Banning Connection	Continued use of access routes described in TEWS #3, 4, and 5 and temporary access paths through private property along Coyote Trail.
MPR #6	2-8-18	2-12-18	Project-wide	Use of 10 water sources to support construction activities.
MPR #7	2-23-18	2-28-18	Poultry MY	Temporary water and electrical supply to yard.
MPR #8	2-27-18	3-2-18	El Casco Connection/ Segment 1	New telecom splice location and single new steel pole installation.
MPR #9	3-26-18	3-27-18	El Casco Connection	Telecom work areas along El Casco Substation access road.
MPR #10	4-6-18	4-9-18	Mountain View #1 MY/All subtrans	Additional workspaces at Mountain View #1 MY entry and at subtransmission improvements work areas.
MPR #11	5-4-18	5-8-18	Tennessee Relocation	Relocation of 5 subtransmission structures from the east side to the west side of Nevada Street.
MPR #12	5-14-18	5-16-18	Timoteo Relocation	Additional workspace for TSP erection at Bryn Mawr Avenue and Interstate 10.
MPR #13	5-23-18	5-25-18	Project-wide	Addition of encased fire hose to O'Grady Court water source and use of 17 water sources to support construction activities.
MPR #14	5-24-18	5-31-18	Timoteo/ Tennessee Relocations	Location shift of 3 TSPs and 1 vault location.
MPR #15	5-31-18	6-4-18	Poultry MY	Paving of access road and trailer complex area.

TEWS / MPR	Date Requested	Date Issued	Phase	Description
MPR #16	6-11-18	6-13-18	Banning Connection	Shift of horizontal directional drilling (HDD) alignment through Smith Creek and addition of walking paths along Coyote Trail.
MPR #17	6-20-18	6-22-18	Dental Circuit/ Tennessee Relocation	Additional workspace along Mission Road, Lugonia Avenue, and Nevada Street.
MPR #18	8-3-18	8-7-18	Timoteo Relocation/ Beaumont #2 MY	Expansion of vault installation work area off Mountain View Avenue and new water source near Beaumont #2 MY.
MPR #19	8-13-18	8-20-18	Segment 4	Additional workspace requests at Sites 4N58, 4N59, and 4N64.
MPR #20	8-21-18	8-27-18	Banning Connection	Use of unpaved access road west of Smith Creek.
MPR #21	10-4-18	10-10-18	Project-wide/ Segments 3&4	Use of 6 water sources, installation of water tank, use of access road, and expansion of WSS.
MPR #22	11-19-18	11-20-18	Subtrans and Telecom	Pole replacement, switch replacement, and shift in underground telecom route.
MPR #23	12-11-18	12-21-18	Transmission	Site 3N32 and Move 3 work areas.
MPR #24	01-15-19	01-28-19	Transmission	Additional Wire Stringing Site in Segment 1.
MPR #25	03-11-19	03-14-10	Transmission	Additional work area west of Supersite 3X55, Segment 3.
MPR #26	04-02-19	04-04-19	Transmission	Use of Prado Lane access road (Segment 2) and two existing hydrants (Segment 6).
MPR #27	04-30-10	05-01-19	Transmission	Use of two existing hydrants (Segment 1), water tank (Segment 2), and helicopter work area (Segment 3).
MPR #28	05-31-19	06-06-19	Transmission	Extra workspace areas, including helicopter landing zones and access roads, on Segments 1, 2, and 6.
MPR #29	06-27-19	07-03-19	Transmission	Extra workspace areas for equipment/material staging, wire stringing, and telecom work, on Segments 3, 4, and 6.
MPR #30	08-01-19	08-06-19	Subtrans and Telecom	Additional workspaces for Maraschino and Devers Telecom Cable Removals, Segments 4 and 6.
MPR #31	10-2-19	10-08-19	Transmission	Extra temporary work areas for wire stringing on Segment 2 and use of an existing access road on Segment 4.
MPR #32	11-18-19	12-03-19	Transmission	Additional work areas for Segments 4 and 6 construction activities.
MPR #33	01-08-20	01-09-20	Transmission	Installation of platform in existing tower to facilitate RTHA nest relocation.
MPR #34	02-19-20	03-02-20	Transmission	Additional Move 8 work areas and access road to the Match MY.

CPUC Compliance Incidents, Project Memoranda (PMs) and Non-Compliance Reports (NCRs)

No Incident, PMs, or NCRs were issued by the CPUC EMs during the subject reporting period. Table 3 summarizes the CPUC Incidents, PMs, and NCRs issued to date.

Table 3
CPUC Incidents, Project Memoranda, and Non-Compliance Reports
(Updated 03/19/20)

Incident/PM/NCR	Regulatory Requirement	Date Issued	Phase	Description
Level 1 Incident	Traffic Control Plan	01-30-18	Banning Connection	Traffic control was set up in such a way that diverted flow into active work area and deviated from approved Traffic Control Plan.
Level 1 Incident	MM WIL-1b	04-19-18	Timoteo/Tennessee Relocation	A portable water tank was observed uncovered for four consecutive days.
Level 1 Incident	MM VEG-1a	5-24-18	El Casco Substation	Equipment was staged outside of approved disturbance limits for at least 1-2 days.
Level 1 Incident	MM AQ-1a	8-15-18	Banning Connection	Fugitive dust observed from construction activities.
Level 1 Incident	MM WIL-1b	8-15-18	Banning Connection	Use of unapproved access road.
Level 1 Incident	MM WIL-1b	8-15-18	Banning Connection	Use of unapproved staging area.
Level 1 Incident	Fire Management Plan	9-18-18	Segment 4	Lack of adequate fire abatement equipment at 3 locations.
Level 1 Incident	Fire Management Plan	9-20-18	Segment 4	Lack of adequate fire abatement equipment
Level 1 Incident	HH-1a	10-17-18	Segment 4	Lack of proper secondary containment for 4 pieces of equipment.
Level 1 Incident	N-1a	10-17-18	Segment 4	Work outside of approved hours
Level 1 Incident	WIL-1b	10-18-18	Grand Terrace MY	Lack of proper covering for pipes between 1.5" to 4"
Level 1 Incident	N-1a	10-18-18	Segment 4	Work outside of approved hours
Level 1 Incident	AQ-1a	10-30-18	Grand Terrace MY	Fugitive Dust Emissions Outside of Property Boundaries at the Grand Terrace Yard.
Level 1 Incident	WIL-1b	01-24-19	Segment 3	Pipes/tubing left open at Sites 3X08 and 3X10.
Level 1 Incident	AQ-1a	02-13-19	Segment 3	Fugitive dust along Segment 3 access road to 3X06.
Level 2 Incident	VEG-3a	02-13-19	Segment 3	Offsite sediment discharge from access road into JD ID 3054.
Level 1 Incident	SWPPP	09-25-19	Segment 6	The disposal of slurry at tower sites in Segment 6.
Level 1 Incident	SWPPP	10-22-19	Devers, Match, and Poultry MY	Improper storage of treated wood poles.
Level 1 Incident	VEG-1c	12-06-19	Segment 2	Materials staged outside of approved work limits just north of M4-T3.
Level 1 Incident	MPCR	03-16-20	Segment 5	Material and equipment staged outside of approved disturbance areas between Construction Areas 5X28 and 5X29.

PROJECT PHOTOGRAPHS



Photo 1 – Snub pole installation at Construction Area WSS4X27-4X29, Segment 4 (March 9, 2020).



Photo 2 – Wire wreck-out activities at Construction Area 5X29, Segment 5 (March 11, 2020).



Photo 3 – Vegetation clearing at Construction Area 6X46, Segment 6 (March 11, 2020).

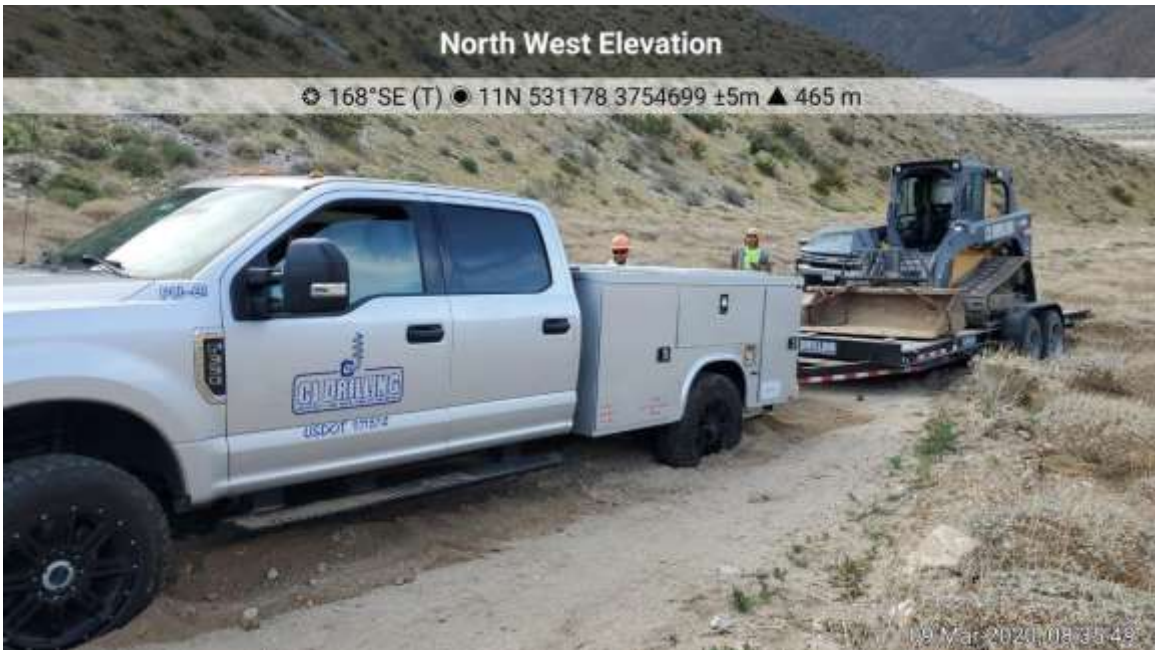


Photo 4 – Vehicle and equipment outside approved work areas on access road to Construction Area 6N32, Segment 6 (March 9, 2020) (Photo courtesy of SCE).



Photo 5 – Equipment and materials staged outside of approved disturbance areas between Construction Areas 5X28 and 5X29, Segment 5 (March 16, 2020).