



5020 Chesebro Road, Suite 200, Agoura Hills, CA 91301-2285
Tel. 818-597-3407 • Fax 818-597-8001 • www.aspeneg.com

PROJECT MEMORANDUM
SCE WEST OF DEVERS UPGRADE PROJECT

To: John Forsythe, Project Manager, CPUC
From: Vida Strong, Aspen Project Manager
Date: February 4, 2022
Subject: Monitoring Report #188: January 17 to 30, 2022

Introduction

This report provides a summary of the construction and compliance activities associated with Southern California Edison’s (SCE) West of Devers (WOD) Upgrade Project. SCE self-performed work (NTPs #2 and #3) is essentially complete with the exception of substation telecommunication upgrades and minor tie-ins. 220 kV work (NTPs #4 and #5) is approximately 95% complete with final circuit energization on May 14, 2021. Remaining construction activities includes cathodic protection installation, McCarthy drain repair and installation, erosion repair, and restoration.

CPUC Environmental Monitor (EM): CPUC EM, Rosina Goodman, was onsite January 18 and 26, 2022.

CPUC Notices to Proceed (NTPs)

Table 1 summarizes the NTPs with construction for the WOD Upgrade Project. No additional NTPs are required.

Table 1 – NTPs

NTP #	Date Requested	Date Issued	Phase	Description
NTP #1	04/04/17	06/29/17	Material Yards	Construction or use of 10 Material Yards
NTP #2	05/18/17	06/29/17	Substation Upgrades	Upgrades to 5 existing Substations
NTP #3	06/05/17	08/10/17	Distribution, Subtransmission, and Telecom	Construction of the Distribution, Subtransmission, and Telecommunication portions of the Project
NTP #4	07/13/17	09/05/17	Transmission	Transmission Line Construction on private lands
NTP #5	08/07/17	03/29/18	Construction on BLM lands	Transmission Line construction on BLM lands

Construction & Compliance

A summary of construction and compliance activities is provided below by NTP.

Material Yards (NTP #1)

As defined in NTP #1, Project material yards (MY) include:

- Mountain View #1 MY (as of August 3, 2021, released from Project)
- Lugonia MY (not used to date)
- Grand Terrace MY (as of May 2020, no longer being used)

- Poultry MY (as of November 2, 2021, released from Project)
- San Timoteo MY (not used to date)
- Beaumont #1 MY (not used to date)
- Beaumont #2 MY (as of August 3, 2021, released from Project)
- Matich MY
- Hathaway #2 MY (not used to date)
- Devers MY (turned over to SCE and no longer being used as of August 2021)

Summary of Construction Activity

1. For the currently approved MYs, all activities are being performed by the contractor operating out of each respective yard.
2. The Matich MY is being utilized by Power Grade Incorporated as their primary base of operations and material/equipment storage location. Work associated with the Matich MY included general yard maintenance and material deliveries throughout the monitoring period.
3. The Mountain View #1 MY, Beaumont MY, Devers MY, and Poultry MYs respective SWPPPs have been closed out and have been released from the West of Devers Project.
4. Restoration and hydroseeding at the Grand Terrace MY have been completed. The SWPPP was closed out on December 12, 2021 and the MY has been released from the West of Devers Project.

Environmental Compliance

1. There were no SCE self-reported or CPUC-issued incidents, and no observations during the monitoring period.
2. There were no SWPPP maintenance items or corrective actions associated with NTP #1 were recorded during the monitoring period. To date, there are no open SWPPP maintenance or corrective actions associated with NTP #1.
3. There were no reportable (> 1 gallon) or non-reportable (< 1 gallon) spills associated with NTP #1 identified during the monitoring period.
4. As of the end of the monitoring period, there are no active nests at locations associated with NTP #1 during the monitoring period. If required, nest management, including establishment of buffers and the removal of inactive non-special-status bird species' nests (non-nesting season only), is being implemented per the requirements of the Project Nesting Bird Management Plan (NBMP). There were no nest buffer reduction submissions associated with NTP #1 during the subject reporting period.
5. No special-status species were observed at locations associated with NTP #1 during the monitoring period.

Substations (NTP #2)

Five substations are identified for improvements in NTP #2. These include:

- Etiwanda Substation
- San Bernardino Substation
- Vista Substation
- El Casco Substation

- Devers Substation

Summary of Construction Activity

1. For the currently approved substation components, all work is being managed by Circle Wood Services with construction support from TTR Substations, Roberson Waite, Cunningham-Davis, and SCE crews. Wire stringing connections and wreck-out activities between the project alignment and locations within the substations are being performed by Abercrombie Services.
2. All SCE self-perform substation construction activities are complete, with the exception of ongoing telecom work inside some of the substation MEER buildings.

Environmental Compliance

1. There were no SCE self-reported and no CPUC incidents documented for construction activities associated with NTP #2 throughout the monitoring period.
2. There were no SWPPP maintenance items or corrective actions associated with NTP #2 recorded during the monitoring period. To date, there are no open SWPPP maintenance or corrective actions associated with NTP #2.
3. There were no reportable (>1 gallon) or non-reportable (<1 gallon) spills associated with NTP #2 identified during the monitoring period.
4. As of the end of the monitoring period, there are no active nests located within work areas associated with NTP #2. If required, nest management, including establishment of buffers and the removal of inactive non-special-status bird species' nests (non-nesting season only), is being implemented per the requirements of the Project NBMP. There were no nest buffer reduction submissions associated with NTP #2 for the subject reporting period.
5. No new special status species were observed at locations associated with NTP #2 during the monitoring period.

Distribution, Subtransmission, and Telecommunication Work (NTP #3)

NTP #3 included distribution, subtransmission, and telecommunication improvements as presented below. These construction activities have been completed.

Distribution improvements included the following:

- Dental 12-kV Distribution Circuit (Dental Circuit)
- Intern 12-kV Distribution Circuit Underbuild (Intern Circuit)
- Reconductor on Juanita Street (Juanita Reconductor)

Subtransmission improvements included the following:

- Removal of San Bernardino–Redlands-Timoteo and the San Bernardino–Redlands-Tennessee 66-kV Lines (Timoteo-Tennessee Removal)
- Relocation of San Bernardino–Redlands-Timoteo 66-kV Lines (Timoteo Relocation)
- Relocation of San Bernardino–Redlands-Tennessee 66-kV Lines (Tennessee Relocation)

Telecommunication improvements included the following:

- San Bernardino Substation Connection to Redlands Inland Empire District Office (San Bernardino Connection)
- Timoteo-Redlands District Office Fiber Optic Cable Connection (Timoteo-Redlands Connection)

- El Casco Substation Connection to Vista Moreno OPGW (El Casco Connection), Segment 3
- Maraschino Substation Connection to Devers-Valley OPGW (Maraschino Connection)
- El Casco–Banning Connection to Devers-Vista Skywrap (El Casco–Banning Connection), Segment 4
- Banning Substation Connection to Devers-Valley OPGW (Banning Connection), Segment 6

Summary of Construction & Compliance Activity

As summarized below, construction of the NTP #3 primary components is complete, so monitoring of compliance activities is not required.

- For distribution components, all 19 12-kV poles have been framed, all 12 12-kV underground vaults have been installed, and 7,430 feet of 12-kV duct bank (conduit) and 10,760 feet of 12-kV conductor wire has been installed.
- For subtransmission components, 119 of 119 66-kV light weight TSPs have been erected, 19 of 19 TSPs have been erected, and 25,610 feet of 66-kV wire has been installed. Both the Timoteo and Tennessee circuits have been energized. Wreck-out of the existing subtransmission infrastructure has been completed.

Transmission Work (NTP #4)

NTP #4 includes six transmission line segments, identified as Segments 1 through 6, generally moving from west to east.

Summary of Construction Activity

1. For the currently approved transmission components, Power Grade Incorporated is conducting access road maintenance/stabilization, BMP installation, vegetation removal, erosion repair, and site restoration.
2. No work associated with Segment 1 occurred during the monitoring period.
3. Work associated with Segment 2 included access road maintenance between Construction Area 2N04 and Prado Lane.
4. Work associated with Segment 3 included: MAC drain dissipator and rock apron installation at Construction Areas 3N03 and 3X35 (see Photo 1); erosion repair at Construction Areas 3N03, 3X33, and 3X35; and access road maintenance between El Casco Substation and Construction Area 3X06 (see Photo 2).
5. No work associated with Segment 4 occurred during the monitoring period.
6. Work associated with Segment 5 (which includes sites within Morongo lands along Segment 5 as reported by SCE) included: Restoration grading at Construction Area 5X46; BMP removal and site clean-up at Construction Areas 5X01 through 5X47; and hydroseed watering at Construction Areas 5X01 (see Photo 3) through 5X16.
7. Work associated with Segment 6 (non-BLM lands) included: Site restoration and soil export at Construction Area WSS-6-6S34-1-MPR-29; BMP installation at Construction Area 6N28; site decompaction and hydroseed preparation at Construction Areas 6X08 (see Photo 4), 6X09-6X10, 6N28, 6N35, WSS-6-6S34-MPR-29, and 6X42; hydroseed application at Construction Areas 6X08, M6-T1, M6-T2, 6N34, 6S40, 6S41, and 6X42 (see Photo 5); and BMP removal and site clean-up at Construction Areas 6X08 through 6X30, 6N34, 6X42 through 6X47.

Environmental Compliance

1. There were no SCE self-reported or CPUC-issued incidents, and one observation at locations associated with NTP #4 during the monitoring period on Segment 6 for non-project related construction activities on the Project right-of-way.
2. There were no reportable (>1 gallon) or non-reportable (<1 gallon) spills associated with NTP #4 identified during the monitoring period.
3. There were no SWPPP maintenance items or corrective actions associated with NTP #4 recorded during the monitoring period. To date, there are no open SWPPP maintenance items or corrective actions associated with NTP #4.
4. All helicopter-related construction activities have been completed.
5. As of the end of the monitoring period, there are 9 active burrowing owl nests associated with NTP #4 during the monitoring period. Buffers have been established per the Project NBMP. If required, nest management, including establishment of buffers and the removal of inactive non-special-status bird species' nests is being implemented per the requirements of the Project NBMP for removal during the nesting season. No inactive nests were removed during the subject reporting period. There were no nest buffer reduction submissions associated with NTP #4 during the subject reporting period.
6. There was one special-status species (loggerhead shrike) observed at locations associated with NTP #4 during the monitoring period.
7. There were no new woodrat middens associated with NTP #4 documented during the monitoring period. There were no woodrat midden relocations documented during the monitoring period.

Transmission Work BLM Lands (NTP #5)

NTP #5 includes the portion of one transmission line segment, identified as Segment 6, which traverses properties managed by the Bureau of Land Management (BLM). NTP #5 was approved by BLM on March 29, 2018. The preconstruction compliance package for BLM lands was deemed acceptable by BLM on February 5, 2019.

Summary of Construction Activity

1. For the currently approved transmission components, Power Grade Incorporated is conducting access road maintenance/stabilization, BMP installation, vegetation removal, and site restoration.
2. Work activities associated with Segment 6 (BLM lands) included: Decompaction and hydroseed preparation at Construction Areas 6N29 and 6N30; BMP installation at Construction Area 6N29; and BMP removal and site clean-up at Construction Areas 6S29 (see Photo 6), 6S30A, and 6X30.

Environmental Compliance

See NTP #4 discussion above for environmental compliance activities.

Temporary Extra Workspaces (TEWS) and Minor Project Refinements (MPRs)

No TEWS or MPRs were approved during the subject monitoring period. Table 2 summarizes the TEWS and MPRs for the WOD Upgrade Project to date.

Table 2 – TEWS & MPRs
(Updated 02/04/22)

TEWS / MPR	Date Requested	Date Issued	Phase	Description
Temporary Extra Workspaces (TEWS)				
TEWS #1	10-12-17	10-19-17	Maraschino Connection	Access to Beaumont Cherry Valley District water hydrant meter located near the intersection of Highland Springs Avenue and Crooked Creek, Beaumont.
TEWS #2	11-13-17	11-21-17	El Casco–Banning Connection	Water source on Oak Valley Boulevard.
TEWS #3	12-15-17	12-15-17	Banning Connection	Access to existing poles off of Lincoln Street.
TEWS #4	12-18-17	12-18-17	Banning Connection	Access to existing poles off of Wesley Street.
TEWS #5	12-20-17	12-21-17	Banning Connection	Access to existing poles at intersection of Wesley Street and Old Idyllwild Road.
TEWS #6	6-13-18	6-13-18	Timoteo Relocation	Extra workspace to facilitate erection of TSP #4696058 at intersection of Redlands Boulevard and Bryn Mawr Street.
TEWS #7	7-27-18	7-30-18	Timoteo Relocation	Extra workspace to facilitate wire pulling activities along Research Drive and Almond Avenue.
TEWS #8	8-27-18	8-28-18	Dental/Intern Circuits	DENIED AND RESCINDED – Extra workspace to facilitate construction along Mission Road.
TEWS #9	10-18-18	10-19-18	Timoteo Relocation	Extra workspace for walking path at Bryn Mawr and I-10.
TEWS #10	11-05-18	11-05-18	Timoteo Relocation	Extra workspace along Barton and Mountain View Roads for cutover operations.
TEWS #11	01-30-19	01-31-19	Timoteo Relocation	Extra workspace to facilitate the removal of fiber optic cable from overhead poles north along Mountain View Avenue and east along Redlands Boulevard.
TEWS #12	02-06-19	02-07-19	Timoteo Relocation	Extra workspace along Mountain View Avenue for subtransmission pole removal.
TEWS #13	02-26-19	02-26-19	Segment 3	Temporary access road detour for vehicle and equipment travel to/from San Timoteo Canyon Road and Tower Site 3X41.
TEWS #14	05-13-19	05-14-19	Banning Connection	Extra workspace along the east side of south Alola Street, City of Banning.
TEWS #15	05-16-19	05-17-19	Segment 1	HLZ and temporary staging area for construction vehicles, materials, and equipment.
TEWS #16	07-24-19	07-24-19	Segment 2	Concrete V-ditch south of 3012 Prado Lane, accessible from approved access roads to Construction Area 2X18.
TEWS #17	08-07-19	08-07-19	Segment 6	Access road for guard pole installation near Construction Area 6S15.
TEWS #18	08-16-19	08-16-19	Segment 6	Helicopter landing zone and temporary staging area for construction vehicles, materials, and equipment.
TEWS #19	09-05-19	09-05-19	Segment 5	Mobile guard structure on an existing road to Construction Area SF501 for wire stringing activities.

TEWS / MPR	Date Requested	Date Issued	Phase	Description
TEWS #20	09-27-19	09-30-19	Segment 6	Mobile guard structure on existing access road to Construction Areas 6S20 and 6S21 for wire stringing activities.
TEWS #21	12-11-19	12-12-19	Etiwanda Substation	Extra workspace within the existing concrete switchrack trench inside the active substation.
TEWS #22	01-31-20	01-31-20	Segment 2	Extra workspace adjacent to Construction Area 2N35 for staging and operating a wire puller.
TEWS #23	03-11-20	03-12-20	Segment 6	Access road near 6N38 for guard structure.
TEWS #24	03-17-20	03-17-20	Segment 5	Extra workspace for staging wire stringing equipment.
TEWS #25	04-08-20	04-08-20	Segment 4	Extra workspace for guard structure near Construction Area 4X25.
TEWS #26	06-26-20	06-26-20	Segment 6	Temporary storage area at Whitewater Rock Company for rubber-tired cranes and equipment over the 4 th of July break.
TEWS #27	09-02-20	09-02-20	Segment 2	Water source on Grand Terrace Road.
TEWS #28	10-27-20	10-27-20	Segment 3	Temporary mobile guard structure locations between 3X25 and 3X27.
TEWS #29	11-22-20	11-23-20	Segment 3	Temporary mobile guard structure location near Construction Area 3X27.
TEWS #30	12-07-20	12-07-20	Segment 3	Temporary mobile guard structure location near Construction Area 3X46.
TEWS #31	04-13-21	04-14-21	Segment 3	Temporary extra work space for telecom work off Oak Valley Parkway in Segment 3.
TEWS #32	04-19-21	04-20-21	Segment 6	Temporary mobile guard structure location on access road between 6N39 and 6N40 in Segment 6.
TEWS #33	04-28-21	04-28-21	Segment 5	Temporary mobile guard structure location on vacant land adjacent to Construction Area 5X29.
TEWS #34	04-28-21	04-28-21	Segment 6	Temporary mobile guard structure location on access road and vacant land in Segment 6.
TEWS #35	06-10-21	06-11-21	Segment 6	Temporary mobile guard structure location on access road and vacant land in Segment 6.
TEWS #36	06-16-21	06-17-21	Segment 5	Temporary mobile guard structure location on access road and developed land in Segment 5.
TEWS #37	7-12-21	07-12-21	Segment 4	Temporary mobile guard structure location on disturbed vacant land in Segment 4.
Minor Project Refinements (MPRs)				
MPR #1	11-17-17	11-22-17	Maraschino Connection	Revisions to the amount of new underground telecom construction.
MPR #2	12-13-17	12-15-17	Maraschino Connection	Addition of two vault work areas on Highland Springs Road.
MPR #3	12-21-17	12-28-17	El Casco–Banning Connection	Adjustments to alignment along Oak Valley Parkway.
MPR #4	12-27-17	1-3-18	Maraschino/El Casco–Banning Connections	Continued use of two fire hydrants previously approved as TEWS #1 and TEWS #2.

TEWS / MPR	Date Requested	Date Issued	Phase	Description
MPR #5	1-16-18	1-22-18	Banning Connection	Continued use of access routes described in TEWS #3, 4, and 5 and temporary access paths through private property along Coyote Trail.
MPR #6	2-8-18	2-12-18	Project-wide	Use of 10 water sources to support construction activities.
MPR #7	2-23-18	2-28-18	Poultry MY	Temporary water and electrical supply to yard.
MPR #8	2-27-18	3-2-18	El Casco Connection/ Segment 1	New telecom splice location and single new steel pole installation.
MPR #9	3-26-18	3-27-18	El Casco Connection	Telecom work areas along El Casco Substation access road.
MPR #10	4-6-18	4-9-18	Mountain View #1 MY/All subtrans	Additional workspaces at Mountain View #1 MY entry and at subtransmission improvements work areas.
MPR #11	5-4-18	5-8-18	Tennessee Relocation	Relocation of 5 subtransmission structures from the east side to the west side of Nevada Street.
MPR #12	5-14-18	5-16-18	Timoteo Relocation	Additional workspace for TSP erection at Bryn Mawr Avenue and Interstate 10.
MPR #13	5-23-18	5-25-18	Project-wide	Addition of encased fire hose to O'Grady Court water source and use of 17 water sources to support construction activities.
MPR #14	5-24-18	5-31-18	Timoteo/ Tennessee Relocations	Location shift of 3 TSPs and 1 vault location.
MPR #15	5-31-18	6-4-18	Poultry MY	Paving of access road and trailer complex area.
MPR #16	6-11-18	6-13-18	Banning Connection	Shift of horizontal directional drilling (HDD) alignment through Smith Creek and addition of walking paths along Coyote Trail.
MPR #17	6-20-18	6-22-18	Dental Circuit/ Tennessee Relocation	Additional workspace along Mission Road, Lugonia Avenue, and Nevada Street.
MPR #18	8-3-18	8-7-18	Timoteo Relocation/ Beaumont #2 MY	Expansion of vault installation work area off Mountain View Avenue and new water source near Beaumont #2 MY.
MPR #19	8-13-18	8-20-18	Segment 4	Additional workspace requests at Sites 4N58, 4N59, and 4N64.
MPR #20	8-21-18	8-27-18	Banning Connection	Use of unpaved access road west of Smith Creek.
MPR #21	10-4-18	10-10-18	Project-wide/ Segments 3&4	Use of 6 water sources, installation of water tank, use of access road, and expansion of WSS.
MPR #22	11-19-18	11-20-18	Subtrans and Telecom	Pole replacement, switch replacement, and shift in underground telecom route.
MPR #23	12-11-18	12-21-18	Transmission	Site 3N32 and Move 3 work areas.
MPR #24	01-15-19	01-28-19	Transmission	Additional Wire Stringing Site in Segment 1.
MPR #25	03-11-19	03-14-19	Transmission	Additional work area west of Supersite 3X55, Segment 3.
MPR #26	04-02-19	04-04-19	Transmission	Use of Prado Lane access road (Segment 2) and two existing hydrants (Segment 6).
MPR #27	04-30-19	05-01-19	Transmission	Use of two existing hydrants (Segment 1), water tank (Segment 2), and helicopter work area (Segment 3).

TEWS / MPR	Date Requested	Date Issued	Phase	Description
MPR #28	05-31-19	06-06-19	Transmission	Extra workspace areas, including helicopter landing zones and access roads, on Segments 1, 2, and 6.
MPR #29	06-27-19	07-03-19	Transmission	Extra workspace areas for equipment/material staging, wire stringing, and telecom work, on Segments 3, 4, and 6.
MPR #30	08-01-19	08-06-19	Subtrans and Telecom	Additional workspaces for Maraschino and Devers Telecom Cable Removals, Segments 4 and 6.
MPR #31	10-2-19	10-08-19	Transmission	Extra temporary work areas for wire stringing on Segment 2 and use of an existing access road on Segment 4.
MPR #32	11-18-19	12-03-19	Transmission	Additional work areas for Segments 4 and 6 construction activities.
MPR #33	01-08-20	01-09-20	Transmission	Installation of platform in existing tower to facilitate RTHA nest relocation.
MPR #34	02-19-20	03-02-20	Transmission	Additional Move 8 work areas and access road to the Match MY.
MPR #35	04-14-20	04-15-20	Transmission	Additional Move 8 work areas on Segments 2, 4, and 6.
MPR #36	05-06-20	05-08-20	Transmission	Additional guard structure work area on Segment 6.
MPR #37	06-03-20	06-08-20	Transmission	Scour countermeasures and additional work areas on Segment 6.
MPR #38	06-30-20	07-07-20	Transmission	Additional work areas for material and equipment staging, McCarthy drain installation, and erosion repairs, Segments 2, 3, and 4.
MPR #39	07-21-20	07-23-20	Transmission	Additional work areas for wire stringing and wreck-out activities on Segment 3, 4, and 6.
MPR #40	09-14-20	09-18-20	Transmission	Additional MAC drains on Segments 2 and 3, additional wire stringing work area at Construction Area 4S56, and a fire hydrant on Segment 2.
MPR #41	10-14-20	10-16-20	Transmission	Additional Mac Drain at Construction Area 3X64 on Segment 3.
MPR #42	11-11-20	11-12-20	Transmission	Additional work area for mobile guard structure west of Construction Area 3S03 on Segment 3.
MPR #43	12-17-20	01-04-21	Transmission	McCarthy Drain replacements, retaining wall, and two permanent nest platforms on Segments 2, 3, and 4.
MPR #44	02-16-21	2-17-21	Transmission	Additional temporary work area for material and equipment staging during wire wreck-out activities at Construction Area 3X51 on Segment 3.
MPR #45	03-04-21	3-16-21	Transmission	Additional temporary work area for material and equipment staging during wire wreck-out activities on Segments 3, 4, and 6 and new and relocated McCarthy Drains on Segments 3 and 4.
MPR #46	04-05-21	04-13-21	Transmission	Additional McCarthy Drains in Segment 3, additional temporary work areas for material and equipment staging during wire wreck-out activities on Segment 4, temporary work area for material and equipment staging during telecommunication work activities on Segment 4, and a request for an exemption from MM VR-3a on Segment 2.
MPR #47	05-13-21	05-21-21	Transmission	Additional work area for rip rap in Segment 2, additional temporary work area for materials and equipment staging during wire wreck-out activities on Segment 4, and an exemption to MM VR-3a for the natural rock wall construction for hilfiker walls on Segments 2 and 3.

TEWS / MPR	Date Requested	Date Issued	Phase	Description
MPR #48	05-28-21	06-04-21	Transmission	Expanded work area to accommodate the relocation of a retaining wall, Segment 2.
MPR #49	06-22-21	07-07-21	Transmission	The transfer of rock, sand and gravel material for use by the Beaumont-Cherry Balley Recreation and Park District.
MPR #50	08-19-21	08-25-21	Transmission	Expansion of temporary work space to McCarthy Drain work limit MWL-2-SE-2N12-1, to facilitate the installation of the McCarthy drain.
MPR #51	08-03-21 Additional information submitted 10-08-21	10-22-21	Transmission	Request for exclusion from restoration requirements for provided Construction Areas in Segments 1 through 6.
MPR #52	12-22-21	01-09-22	Transmission	Request for additional temporary and permanent impacts to repair erosion damage at Construction Areas 3N03, 3X35, and 4X34.
MPR #53	02-03-21	Under Review	Transmission	Worksite southwest of Tower Site 3S64 for the installation of an extended McCarthy Flume and Gabion Dissipator.

CPUC Compliance Incidents, Project Memoranda (PMs) and Non-Compliance Reports (NCRs)

No incidents, PMs, or NCRs were issued by the CPUC EM during the subject reporting period. Table 3 summarizes the CPUC Incidents, PMs, and NCRs issued to date.

Table 3
CPUC Incidents, Project Memoranda, and Non-Compliance Reports
(Updated 02/04/22)

Incident/ PM/NCR	Regulatory Requirement	Date Issued	Phase	Description
Level 1 Incident	Traffic Control Plan	01-30-18	Banning Connection	Traffic control was set up in such a way that diverted flow into active work area and deviated from approved Traffic Control Plan.
Level 1 Incident	MM WIL-1b	04-19-18	Timoteo/ Tennessee Relocation	A portable water tank was observed uncovered for four consecutive days.
Level 1 Incident	MM VEG-1a	5-24-18	El Casco Substation	Equipment was staged outside of approved disturbance limits for at least 1-2 days.
Level 1 Incident	MM AQ-1a	8-15-18	Banning Connection	Fugitive dust observed from construction activities.
Level 1 Incident	MM WIL-1b	8-15-18	Banning Connection	Use of unapproved access road.
Level 1 Incident	MM WIL-1b	8-15-18	Banning Connection	Use of unapproved staging area.
Level 1 Incident	Fire Management Plan	9-18-18	Segment 4	Lack of adequate fire abatement equipment at 3 locations.

Incident/ PM/NCR	Regulatory Requirement	Date Issued	Phase	Description
Level 1 Incident	Fire Management Plan	9-20-18	Segment 4	Lack of adequate fire abatement equipment
Level 1 Incident	HH-1a	10-17-18	Segment 4	Lack of proper secondary containment for 4 pieces of equipment.
Level 1 Incident	N-1a	10-17-18	Segment 4	Work outside of approved hours
Level 1 Incident	WIL-1b	10-18-18	Grand Terrace MY	Lack of proper covering for pipes between 1.5" to 4"
Level 1 Incident	N-1a	10-18-18	Segment 4	Work outside of approved hours
Level 1 Incident	AQ-1a	10-30-18	Grand Terrace MY	Fugitive Dust Emissions Outside of Property Boundaries at the Grand Terrace Yard.
Level 1 Incident	WIL-1b	01-24-19	Segment 3	Pipes/tubing left open at Sites 3X08 and 3X10.
Level 1 Incident	AQ-1a	02-13-19	Segment 3	Fugitive dust along Segment 3 access road to 3X06.
Level 2 Incident	VEG-3a	02-13-19	Segment 3	Offsite sediment discharge from access road into JD ID 3054.
Level 1 Incident	SWPPP	09-25-19	Segment 6	The disposal of slurry at tower sites in Segment 6.
Level 1 Incident	SWPPP	10-22-19	Devers, Match, and Poultry MY	Improper storage of treated wood poles.
Level 1 Incident	VEG-1c	12-06-19	Segment 2	Materials staged outside of approved work limits just north of M4-T3.
Level 1 Incident	MMCRP	03-16-20	Segment 5	Material and equipment staged outside of approved disturbance areas between Construction Areas 5X28 and 5X29.
Level 1 Incident	WIL-1C	05-11-20	Segment 4	Tower assembly within 150 feet of an active common raven nest and an expired nest buffer reduction at Construction Area 4X24.
Level 1 Incident	WIL-1b	08-06-20	Poultry MY	Several piles of construction pipes were observed uncovered within the Poultry MY.
Level 1 Incident	MMCRP	10-27-20	Segments 3 and 4	Construction vehicles and equipment outside approved construction areas at Construction Area 4X45 and between Construction Areas 3X26 and 3X27.
Level 1 Incident	WIL-1b	09-15-21	Poultry MY	60+ steep walled excavations for future fencing were left uncovered overnight creating a hazard for wildlife entrapment.

PROJECT PHOTOGRAPHS



Photo 1 – MAC drain dissipator and rock apron installation at Construction Area 3X35, Segment 3 (January 27, 2022) (Photo courtesy of SCE).



Photo 2 – Access road maintenance between El Casco Substation and Construction Area 3N06, Segment 3 (January 18, 2022) (Photo courtesy of SCE).



Photo 3 – Hydroseed watering at Construction Area 5X01, Segment 5 (January 26, 2022) (Photo courtesy of SCE).



Photo 4 – Site decompaction and hydroseed preparation at Construction Area 6X08, Segment 6 (January 18, 2022).



Photo 5 – Hydroseed application at Construction Area 6X42, Segment 6 (January 26, 2022).

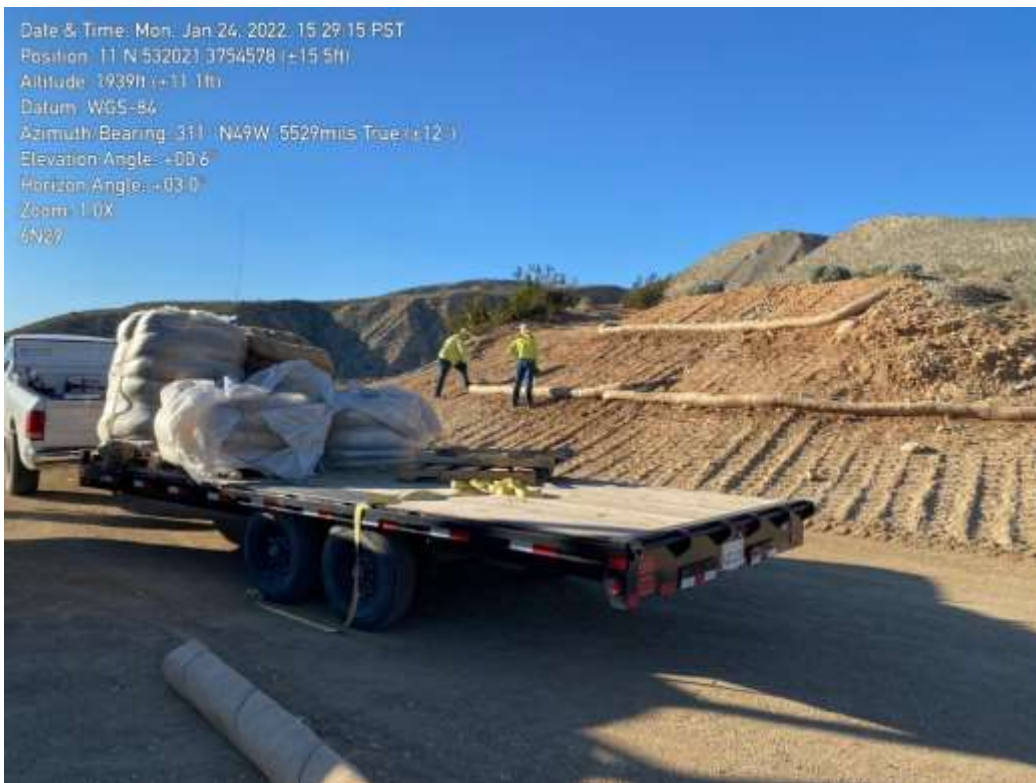


Photo 6 – BMP installation at Construction Area 6N29, Segment 6 (January 24, 2022) (Photo courtesy of SCE).