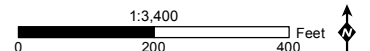


Attachment B.2: TL626 Route Map 1 of 43

CNF Power Line Replacement Projects

-  Removal
-  Staging Area
-  United States Forest Service
-  Wood-to-Steel Replacement
-  Stringing Site
-  Stream
-  Surveyed Drainage
-  Access Road



Z:\Projects\SDGE_CNF_ESRP\MXDs\Siting\Updated_POD\TL626_Mapbook.mxd 4/29/2015

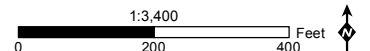
Source: SDG&E, 2015; USFS, 2015; Chambers Group, Inc., 2012



Attachment B.2: TL626 Route Map 2 of 43

CNF Power Line Replacement Projects

- Removal
- Staging Area
- United States Forest Service
- Wood-to-Steel Replacement
- Stringing Site
- Stream
- Surveyed Drainage
- Access Road



Z:\Projects\SDGE_CNF_ESRP\MXDs\Siting\Updated_POD\TL626_Mapbook.mxd - 4/29/2015

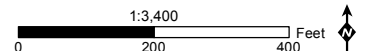
Source: SDG&E, 2015; USFS, 2015; Chambers Group, Inc., 2012



Attachment B.2: TL626 Route Map 3 of 43

CNF Power Line Replacement Projects

- Ⓢ Removal
- Ⓢ Wood-to-Steel Replacement
- Staging Area
- Stringing Site
- United States Forest Service
- ~~~~~ Stream
- ~~~~~ Surveyed Drainage
- ~~~~~ Access Road




Z:\Projects\SDGE_CNF_ESRP\MXDs\Siting\Updated_POD\TL626_Mapbook.mxd 4/29/2015

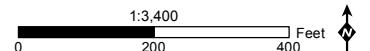
Source: SDG&E, 2015; USFS, 2015; Chambers Group, Inc., 2012



Attachment B.2: TL626 Route Map 4 of 43

CNF Power Line Replacement Projects

-  Removal
-  Staging Area
-  United States Forest Service
-  Wood-to-Steel Replacement
-  Stringing Site
-  Stream
-  Surveyed Drainage
-  Access Road



Z:\Projects\SDGE_CNF_ESRP\MXDs\Tasking\Updated_POD\TL626_Mapbook.mxd 4/29/2015

Source: SDG&E, 2015; USFS, 2015; Chambers Group, Inc., 2012

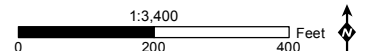


Z:\Projects\SDGE_CNF_ESRP\MXDs\Siting\Updated_POD\TL626_Mapbook.mxd 4/29/2015

Attachment B.2: TL626 Route Map 5 of 43

CNF Power Line Replacement Projects

- R Removal
- S Wood-to-Steel Replacement
- Staging Area
- Stringing Site
- United States Forest Service
- Stream
- Surveyed Drainage
- Access Road




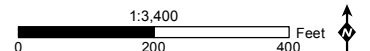
Source: SDG&E, 2015; USFS, 2015; Chambers Group, Inc., 2012



Attachment B.2: TL626 Route Map 6 of 43

CNF Power Line Replacement Projects

-  Removal
-  Staging Area
-  United States Forest Service
-  Wood-to-Steel Replacement
-  Stringing Site
-  Stream
-  Surveyed Drainage
-  Access Road



Z:\Projects\SDGE_CNF_ESRP\MXDs\Tasking\Updated_POD\TL626_Mapbook.mxd_4/29/2015

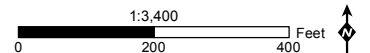
Source: SDG&E, 2015; USFS, 2015; Chambers Group, Inc., 2012



Attachment B.2: TL626 Route Map 7 of 43

CNF Power Line Replacement Projects

- Removal
- Staging Area
- United States Forest Service
- Wood-to-Steel Replacement
- Stringing Site
- Stream
- Surveyed Drainage
- Access Road



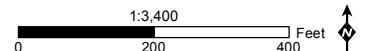
Z:\Projects\SDGE_CNF_ESRP\MXDs\Staging\Updated_POD\TL626_Mapbook.mxd_4/29/2015



Attachment B.2: TL626 Route Map 8 of 43

CNF Power Line Replacement Projects

- Removal
- Staging Area
- United States Forest Service
- Stringing Site
- Wood-to-Steel Replacement
- Stream
- Surveyed Drainage
- Access Road





Z:\Projects\SDGE_CNF_ESRP\MXDs\Siting\Updated_POD\TL626_Mapbook.mxd 4/29/2015

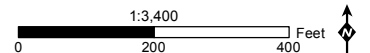
Source: SDG&E, 2015; USFS, 2015; Chambers Group, Inc., 2012



Attachment B.2: TL626 Route Map 9 of 43

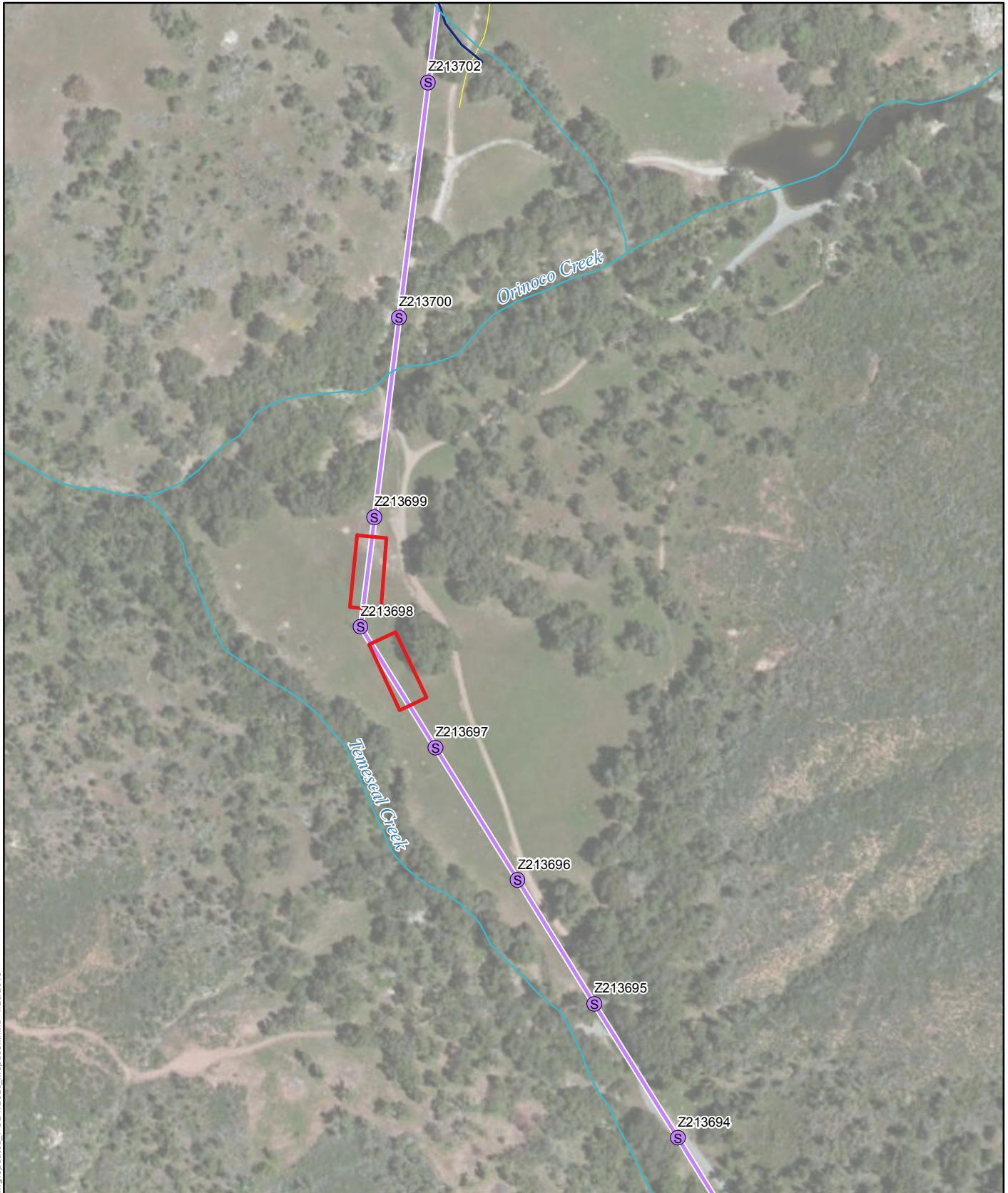
CNF Power Line Replacement Projects

-  Wood-to-Steel Replacement
-  Staging Area
-  United States Forest Service
-  Stringing Site
-  Stream
-  Surveyed Drainage
-  Access Road



Z:\Projects\SDGE_CNF_ESRP\MXDs\Siting\Updated_POD\TL626_Mapbook.mxd - 4/29/2015

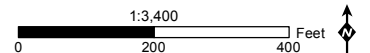
Source: SDG&E, 2015; USFS, 2015; Chambers Group, Inc., 2012



Attachment B.2: TL626 Route Map 10 of 43

CNF Power Line Replacement Projects

- Removal
- Staging Area
- United States Forest Service
- Wood-to-Steel Replacement
- Stringing Site
- Stream
- Surveyed Drainage
- Access Road



Z:\Projects\SDGE_CNF_ESRP\MXDs\Siting\Updated_POD\TL626_Mapbook.mxd_4/29/2015

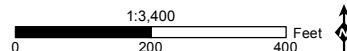
Source: SDG&E, 2015; USFS, 2015; Chambers Group, Inc., 2012



Attachment B.2: TL626 Route Map 11 of 43

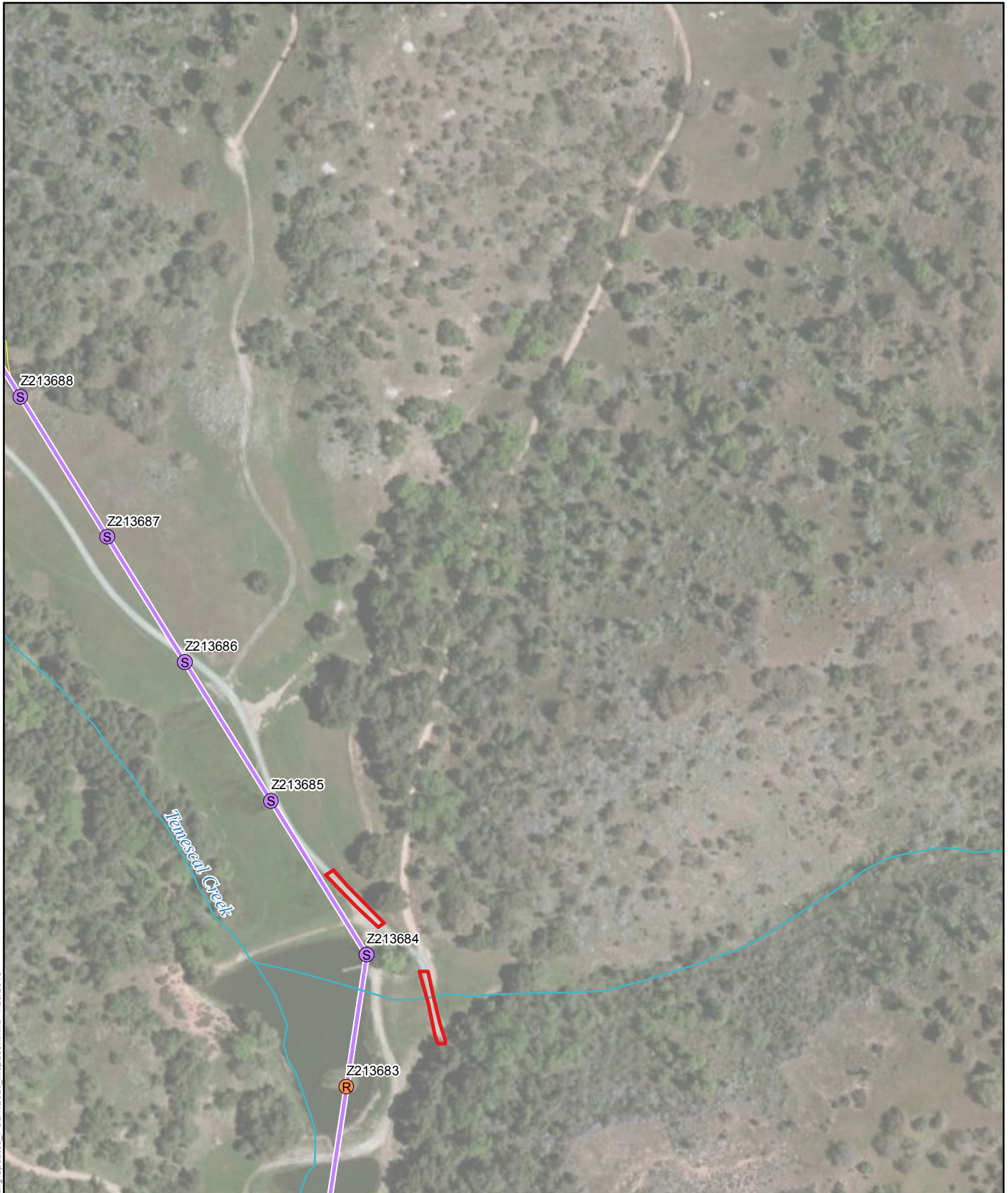
CNF Power Line Replacement Projects

-  Removal
-  Staging Area
-  United States Forest Service
-  Wood-to-Steel Replacement
-  Stringing Site
-  Stream
-  Surveyed Drainage
-  Access Road



Z:\Projects\SDGE_CNF_ESRP\MXDs\Siting\Updated_POD\TL626_Mapbook.mxd 4/29/2015

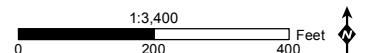
Source: SDG&E, 2015; USFS, 2015; Chambers Group, Inc., 2012



Attachment B.2: TL626 Route Map 12 of 43

CNF Power Line Replacement Projects

- Removal
- Staging Area
- United States Forest Service
- Wood-to-Steel Replacement
- Stringing Site
- Stream
- Surveyed Drainage
- Access Road



Z:\Projects\SDGE_CNF_ESRP\MXDs\Siting\Updated_POD\TL626_Mapbook.mxd_4/29/2015

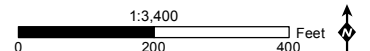
Source: SDG&E, 2015; USFS, 2015; Chambers Group, Inc., 2012



Attachment B.2: TL626 Route Map 13 of 43

CNF Power Line Replacement Projects

- Removal
- Staging Area
- United States Forest Service
- Wood-to-Steel Replacement
- Stringing Site
- Stream
- Surveyed Drainage
- Access Road







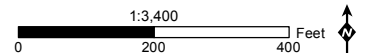
Z:\Projects\SDGE_CNF_ESRP\MXDs\Siting\Updated_POD\TL626_Mapbook.mxd_4/29/2015



Attachment B.2: TL626 Route Map 14 of 43

CNF Power Line Replacement Projects

-  Removal
-  Staging Area
-  United States Forest Service
-  Wood-to-Steel Replacement
-  Stringing Site
-  Stream
-  Surveyed Drainage
-  Access Road



Source: SDG&E, 2015; USFS, 2015; Chambers Group, Inc., 2012

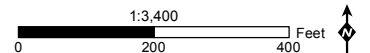
Z:\Projects\SDGE_CNF_ESRP\MXDs\Siting\Updated_POD\TL626_Mapbook.mxd 4/29/2015



Attachment B.2: TL626 Route Map 15 of 43

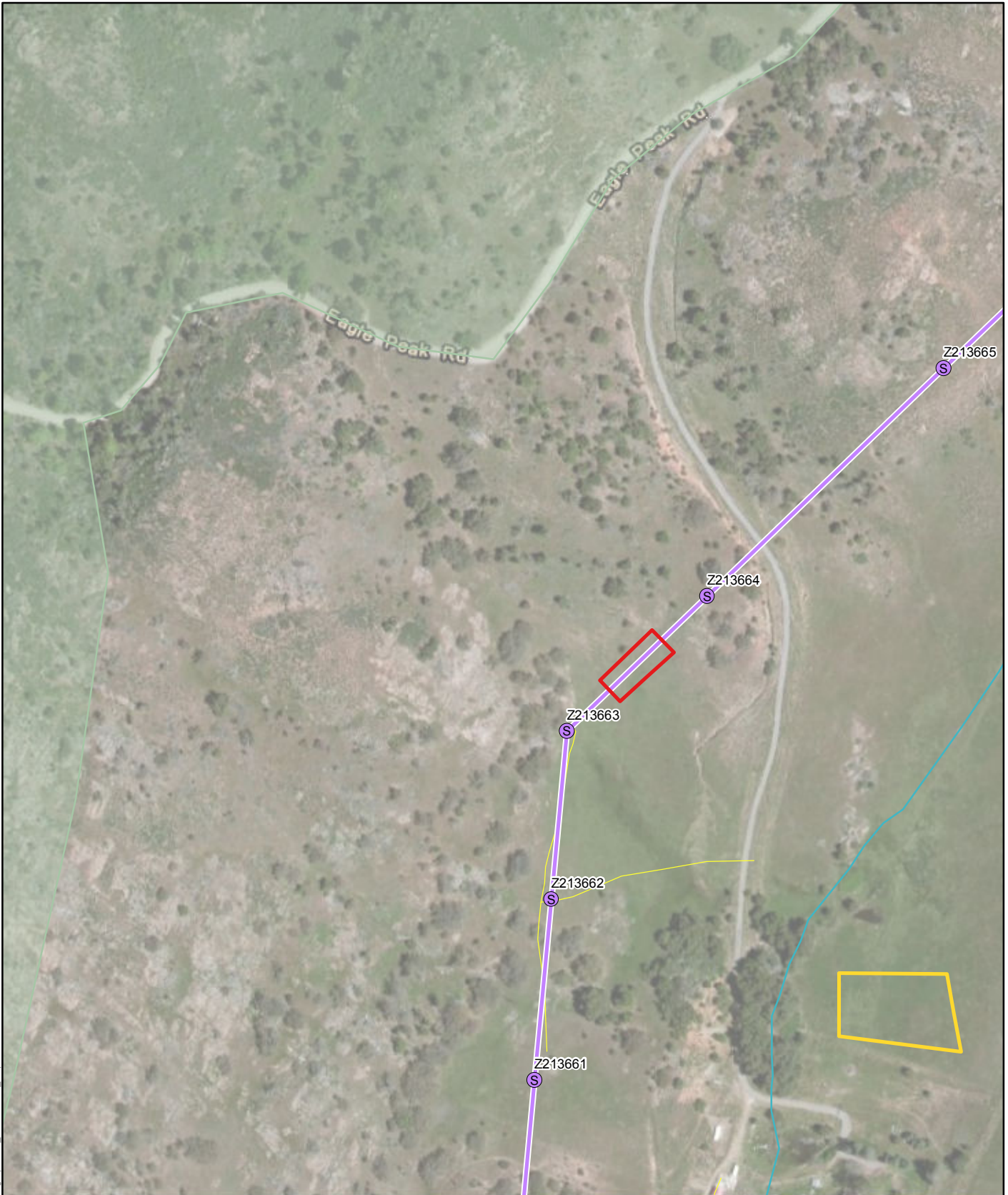
CNF Power Line Replacement Projects

-  Removal
-  Staging Area
-  United States Forest Service
-  Wood-to-Steel Replacement
-  Stringing Site
-  Stream
-  Surveyed Drainage
-  Access Road



Z:\Projects\SDGE_CNF_ESRP\MXDs\Tasking\Updated_POD\TL626_Mapbook.mxd_4/29/2015

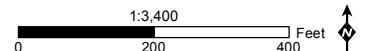
Source: SDG&E, 2015; USFS, 2015; Chambers Group, Inc., 2012



Attachment B.2: TL626 Route Map 16 of 43

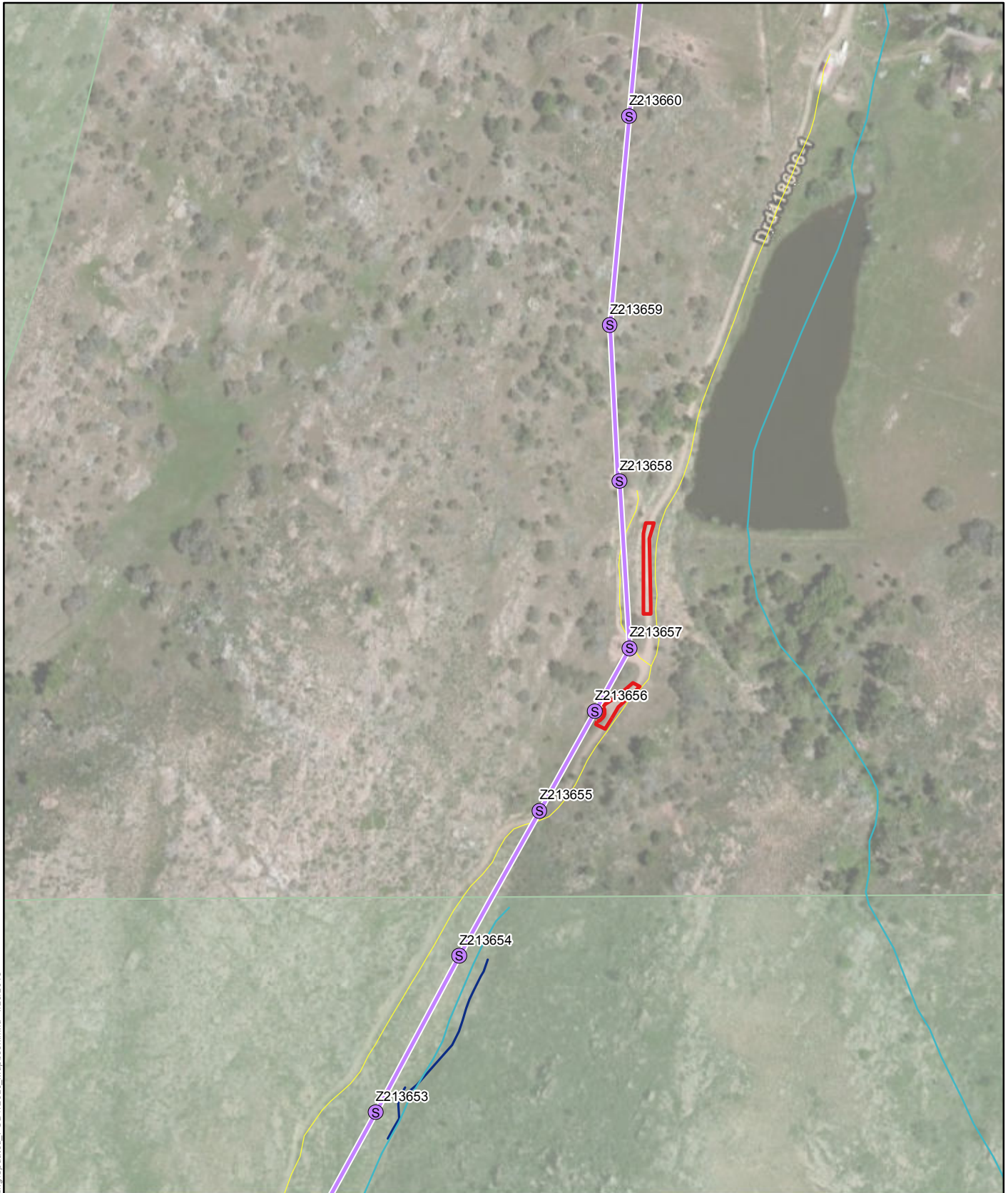
CNF Power Line Replacement Projects

-  Removal
-  Staging Area
-  United States Forest Service
-  Wood-to-Steel Replacement
-  Stringing Site
-  Stream
-  Surveyed Drainage
-  Access Road



Z:\Projects\SDGE_CNF_ESRP\MXDs\Siting\Updated_POD\TL626_Mapbook.mxd 4/29/2015

Source: SDG&E, 2015; USFS, 2015; Chambers Group, Inc., 2012

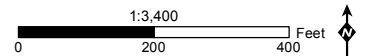


Z:\Projects\SDGE_CNF_ESRP\MXDs\Siting\Updated_POD\TL626_Mapbook.mxd - 4/29/2015

Attachment B.2: TL626 Route Map 17 of 43

CNF Power Line Replacement Projects

- Removal
- Staging Area
- United States Forest Service
- Wood-to-Steel Replacement
- Stringing Site
- Stream
- Surveyed Drainage
- Access Road



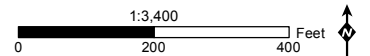
Source: SDG&E, 2015; USFS, 2015; Chambers Group, Inc., 2012



Attachment B.2: TL626 Route Map 18 of 43

CNF Power Line Replacement Projects

- Removal
- Staging Area
- United States Forest Service
- Wood-to-Steel Replacement
- Stringing Site
- Stream
- Surveyed Drainage
- Access Road



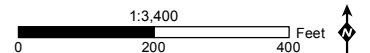
Z:\Projects\SDGE_CNF_ESRP\MXDs\Siting\Updated_POD\TL626_Mapbook.mxd_4/29/2015



Attachment B.2: TL626 Route Map 19 of 43

CNF Power Line Replacement Projects

- Removal
- Staging Area
- United States Forest Service
- Wood-to-Steel Replacement
- Stringing Site
- Stream
- Surveyed Drainage
- Access Road



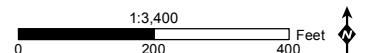
Z:\Projects\SDGE_CNF_ESRP\MXDs\Siting\Updated_POD\TL626_Mapbook.mxd 4/29/2015



Attachment B.2: TL626 Route Map 20 of 43

CNF Power Line Replacement Projects

-  Removal
-  Staging Area
-  United States Forest Service
-  Wood-to-Steel Replacement
-  Stringing Site
-  Stream
-  Surveyed Drainage
-  Access Road



Z:\Projects\SDGE_CNF_ESRP\MXDs\Siting\Updated_POD\TL626_Mapbook.mxd 4/29/2015

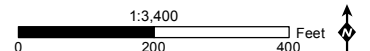
Source: SDG&E, 2015; USFS, 2015; Chambers Group, Inc., 2012



Attachment B.2: TL626 Route Map 21 of 43

CNF Power Line Replacement Projects

- Removal
- Staging Area
- United States Forest Service
- Wood-to-Steel Replacement
- Stringing Site
- Stream
- Surveyed Drainage
- Access Road



Z:\Projects\SDGE_CNF_ESRP\MXDs\Saving\Updated_POD\TL626_Mapbook.mxd 4/29/2015

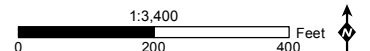
Source: SDG&E, 2015; USFS, 2015; Chambers Group, Inc., 2012



Attachment B.2: TL626 Route Map 22 of 43

CNF Power Line Replacement Projects

- Removal
- Staging Area
- United States Forest Service
- Wood-to-Steel Replacement
- Stringing Site
- Stream
- Surveyed Drainage
- Access Road



Z:\Projects\SDGE_CNF_ESRP\MXDs\Siting\Updated_POD\TL626_Mapbook.mxd 4/29/2015

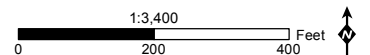
Source: SDG&E, 2015; USFS, 2015; Chambers Group, Inc., 2012



Attachment B.2: TL626 Route Map 23 of 43

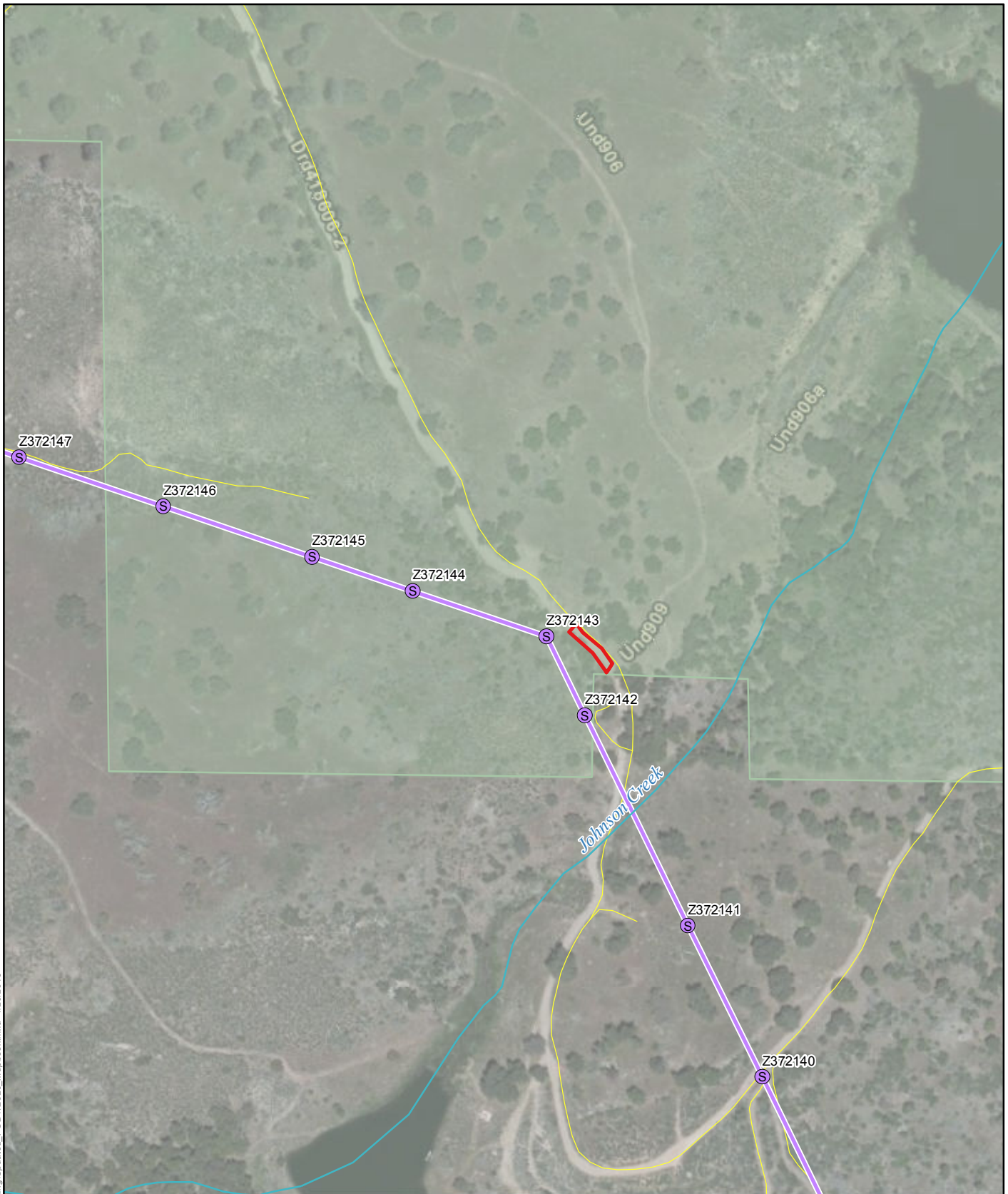
CNF Power Line Replacement Projects

- Removal
- Staging Area
- United States Forest Service
- Wood-to-Steel Replacement
- Stringing Site
- Stream
- Surveyed Drainage
- Access Road



Z:\Projects\SDGE_CNF_ESRP\MXDs\Siting\Updated_POD\TL626_Mapbook.mxd 4/29/2015

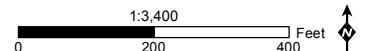
Source: SDG&E, 2015; USFS, 2015; Chambers Group, Inc., 2012



Attachment B.2: TL626 Route Map 24 of 43

CNF Power Line Replacement Projects

- Removal
- Staging Area
- United States Forest Service
- Wood-to-Steel Replacement
- Stringing Site
- Stream
- Surveyed Drainage
- Access Road



Z:\Projects\SDGE_CNF_ESRP\MXDs\Siting\Updated_POD\TL626_Mapbook.mxd 4/29/2015

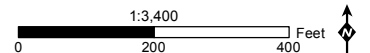
Source: SDG&E, 2015; USFS, 2015; Chambers Group, Inc., 2012



Attachment B.2: TL626 Route Map 25 of 43

CNF Power Line Replacement Projects

- Removal
- Staging Area
- United States Forest Service
- Wood-to-Steel Replacement
- Stringing Site
- Stream
- Surveyed Drainage
- Access Road



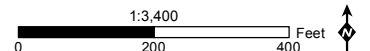
Z:\Projects\SDGE_CNF_ESRP\MXDs\Siting\Updated_POD\TL626_Mapbook.mxd_4/29/2015



Attachment B.2: TL626 Route Map 26 of 43

CNF Power Line Replacement Projects

-  Wood-to-Steel Replacement
-  Staging Area
-  United States Forest Service
-  Stringing Site
-  Stream
-  Access Road
-  Surveyed Drainage



Z:\Projects\SDGE_CNF_ESRP\MXDs\Siting\Updated_POD\TL626_Mapbook.mxd 4/29/2015

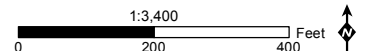
Source: SDG&E, 2015; USFS, 2015; Chambers Group, Inc., 2012



Attachment B.2: TL626 Route Map 27 of 43

CNF Power Line Replacement Projects

- Removal
- Staging Area
- United States Forest Service
- Wood-to-Steel Replacement
- Stringing Site
- Stream
- Surveyed Drainage
- Access Road



Z:\Projects\SDGE_CNF_ESRP\MXDs\Siting\Updated_POD\TL626_Mapbook.mxd 4/29/2015

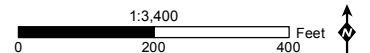
Source: SDG&E, 2015; USFS, 2015; Chambers Group, Inc., 2012



Attachment B.2: TL626 Route Map 28 of 43

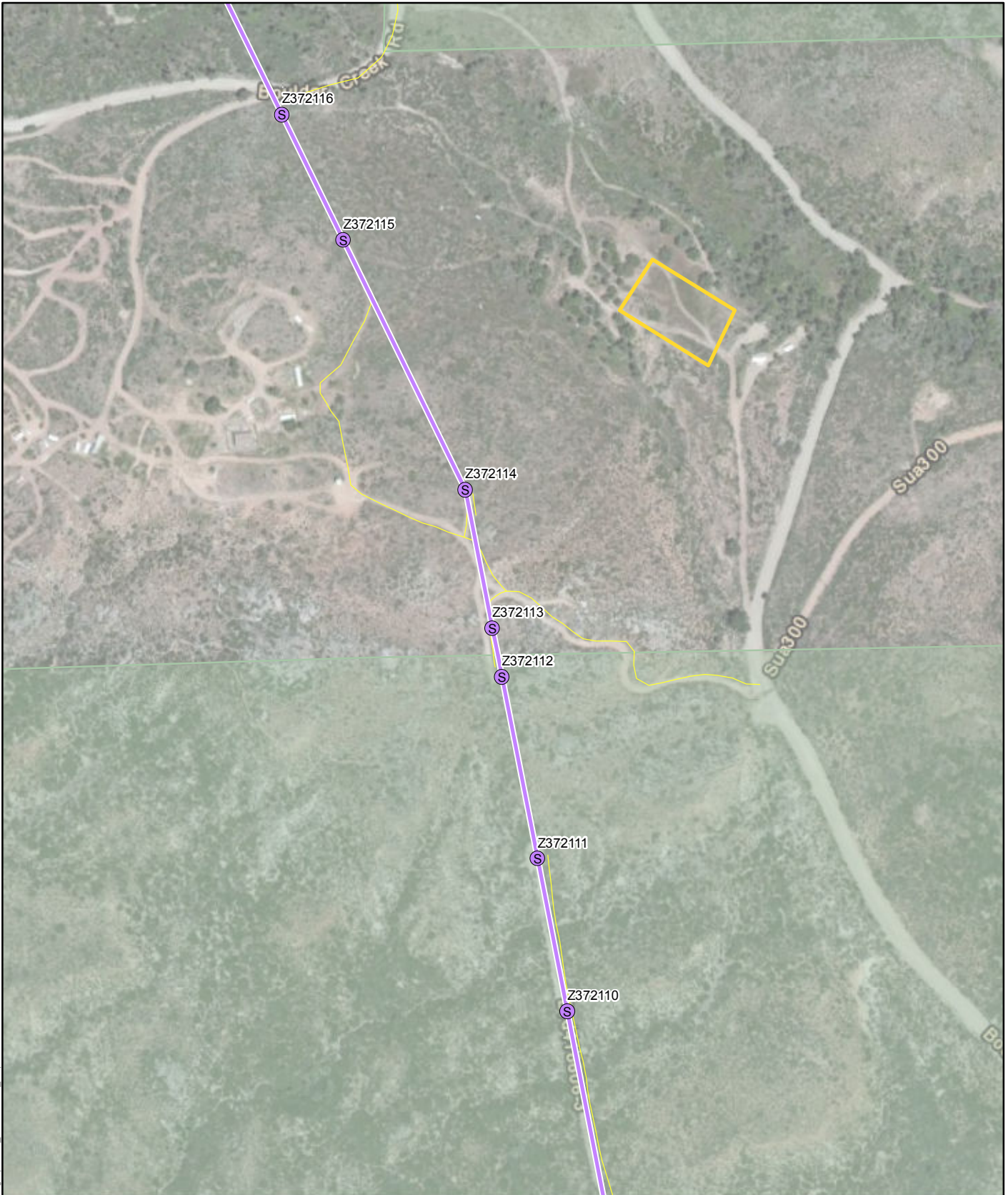
CNF Power Line Replacement Projects

- Removal
- Staging Area
- United States Forest Service
- Stringing Site
- Stream
- Surveyed Drainage
- Access Road




Z:\Projects\SDGE_CNF_ESRP\MXDs\Saxing\Updated_POD\TL626_Mapbook.mxd 4/29/2015

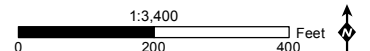
Source: SDG&E, 2015; USFS, 2015; Chambers Group, Inc., 2012



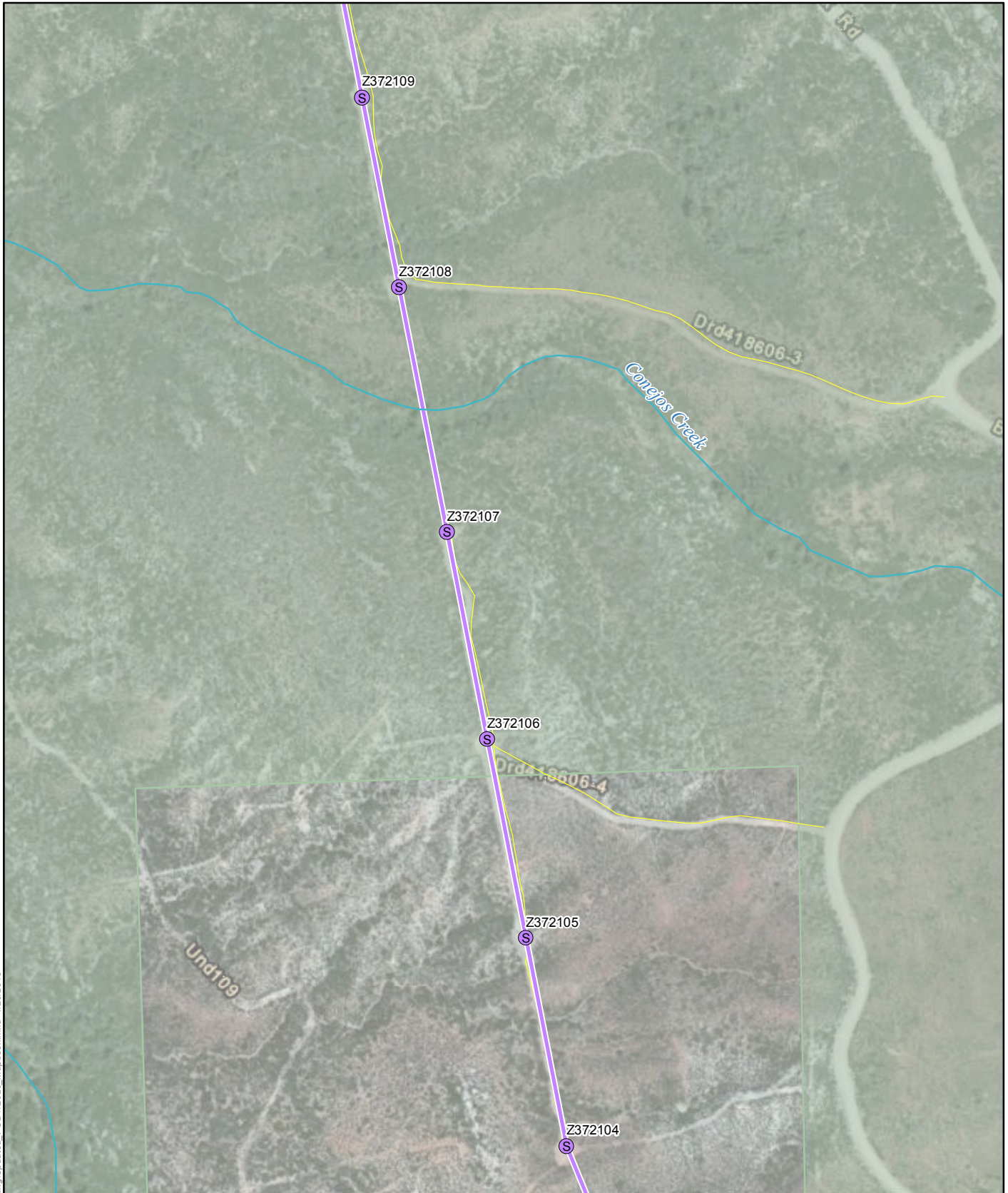
Attachment B.2: TL626 Route Map 29 of 43

CNF Power Line Replacement Projects

-  Removal
-  Staging Area
-  United States Forest Service
-  Wood-to-Steel Replacement
-  Stringing Site
-  Stream
-  Surveyed Drainage
-  Access Road



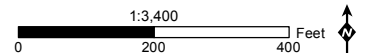
Z:\Projects\SDGE_CNF_ESRP\MXDs\Siting\Updated_POD\TL626_Mapbook.mxd_4/29/2015



Attachment B.2: TL626 Route Map 30 of 43

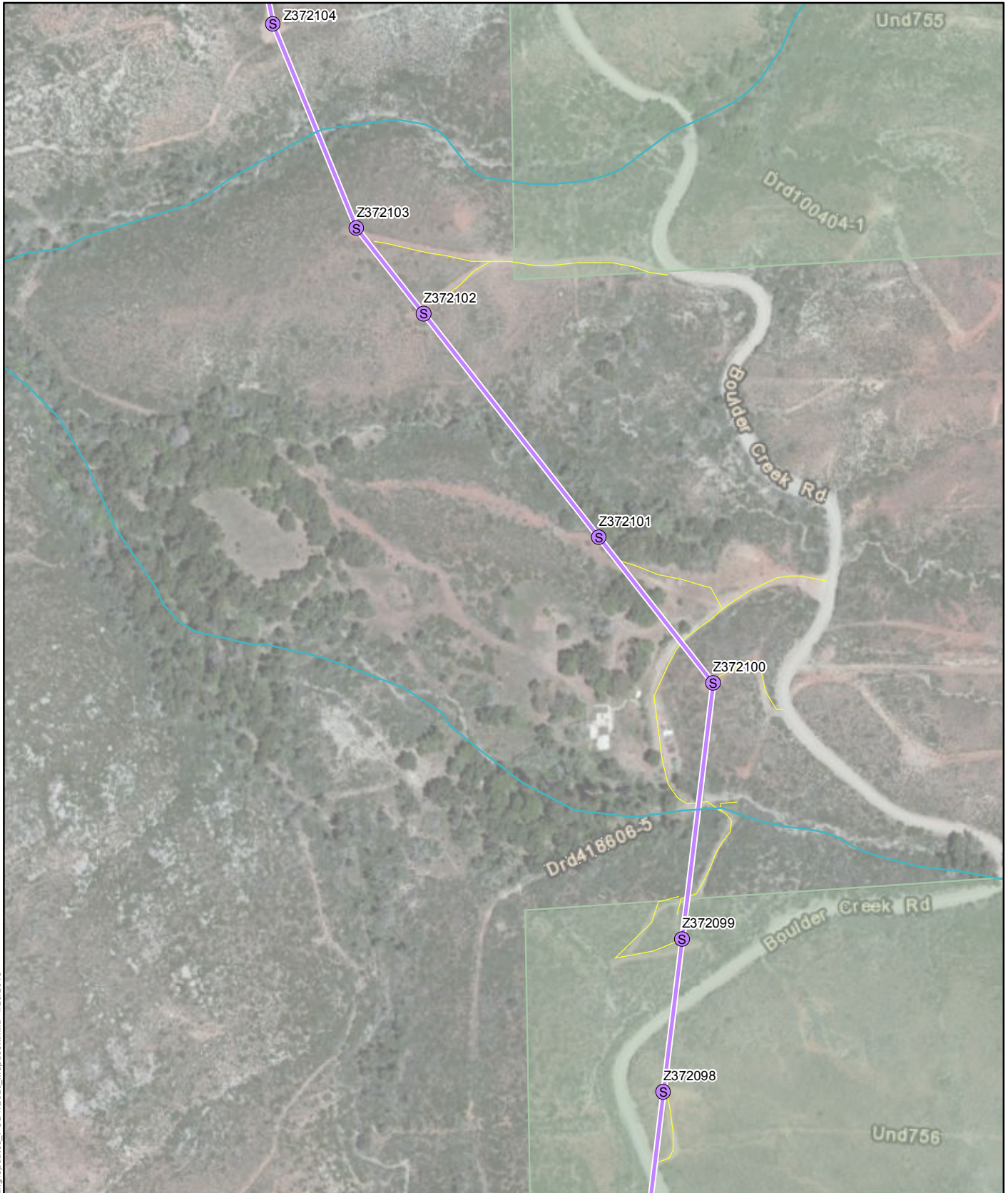
CNF Power Line Replacement Projects

- Removal
- Staging Area
- United States Forest Service
- Wood-to-Steel Replacement
- Stringing Site
- Stream
- Surveyed Drainage
- Access Road



Z:\Projects\SDGE_CNF_ESRP\MXDs\Siting\Updated_POD\TL626_Mapbook.mxd 4/29/2015

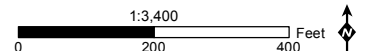
Source: SDG&E, 2015; USFS, 2015; Chambers Group, Inc., 2012



Attachment B.2: TL626 Route Map 31 of 43

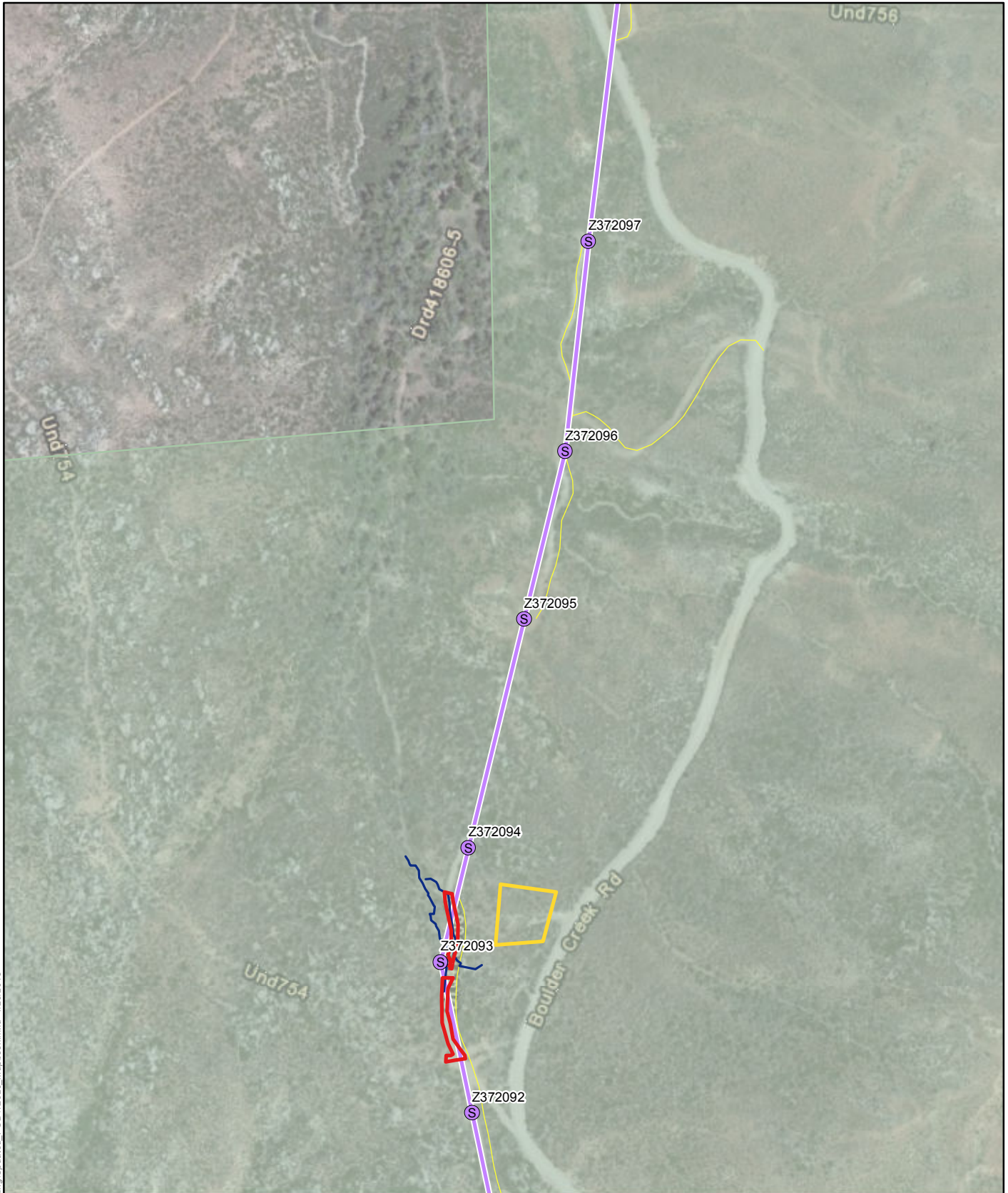
CNF Power Line Replacement Projects

-  Removal
-  Staging Area
-  United States Forest Service
-  Wood-to-Steel Replacement
-  Stringing Site
-  Stream
-  Surveyed Drainage
-  Access Road



Z:\Projects\SDGE_CNF_ESRP\MXDs\Siting\Updated_POD\TL626_Mapbook.mxd 4/29/2015

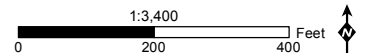
Source: SDG&E, 2015; USFS, 2015; Chambers Group, Inc., 2012



Attachment B.2: TL626 Route Map 32 of 43

CNF Power Line Replacement Projects

-  Removal
-  Staging Area
-  United States Forest Service
-  Wood-to-Steel Replacement
-  Stringing Site
-  Stream
-  Surveyed Drainage
-  Access Road



Z:\Projects\SDGE_CNF_ESRP\MXDs\Siting\Updated_POD\TL626_Mapbook.mxd 4/29/2015

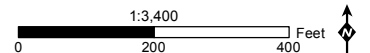
Source: SDG&E, 2015; USFS, 2015; Chambers Group, Inc., 2012



Attachment B.2: TL626 Route Map 33 of 43

CNF Power Line Replacement Projects

- R Removal
- S Wood-to-Steel Replacement
- Staging Area
- Stringing Site
- United States Forest Service
- ~ Stream
- ~ Surveyed Drainage
- Access Road



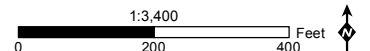
Z:\Projects\SDGE_CNF_ESRP\MXDs\Siting\Updated_POD\TL626_Mapbook.mxd_4/29/2015



Attachment B.2: TL626 Route Map 34 of 43

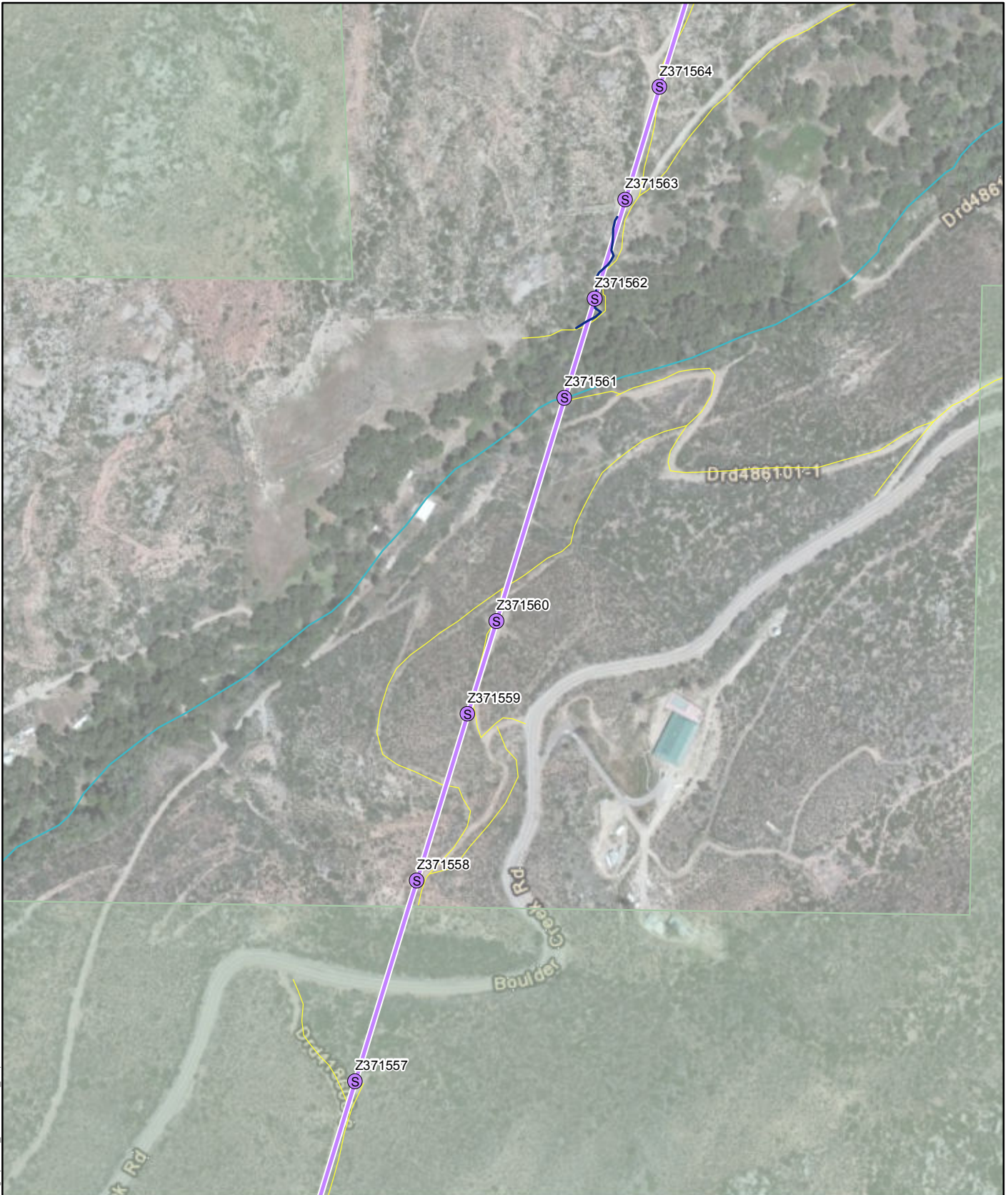
CNF Power Line Replacement Projects

- Removal
- Staging Area
- United States Forest Service
- Wood-to-Steel Replacement
- Stringing Site
- Stream
- Surveyed Drainage
- Access Road



Z:\Projects\SDGE_CNF_ESRP\MXDs\Siting\Updated_POD\TL626_Mapbook.mxd 4/29/2015

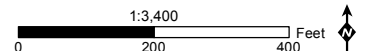
Source: SDG&E, 2015; USFS, 2015; Chambers Group, Inc., 2012



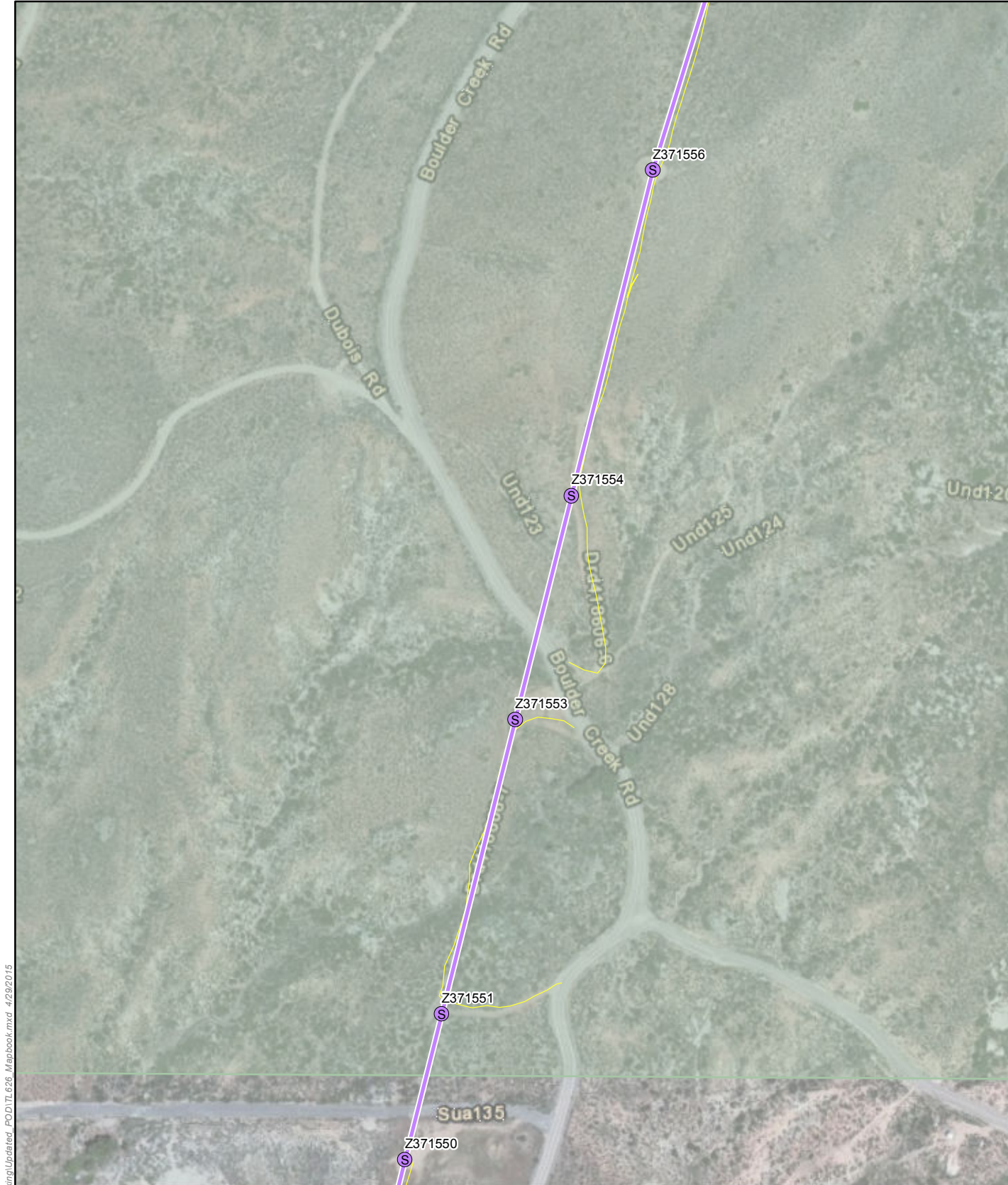
Attachment B.2: TL626 Route Map 35 of 43

CNF Power Line Replacement Projects

-  Removal
-  Staging Area
-  United States Forest Service
-  Wood-to-Steel Replacement
-  Stringing Site
-  Stream
-  Surveyed Drainage
-  Access Road



Z:\Projects\SDGE_CNF_ESRP\MXDs\Siting\Updated_POD\TL626_Mapbook.mxd_4/29/2015




Z:\Projects\SDGE_CNF_ESRP\MXDs\Siting\Updated_POD\TL626_Mapbook.mxd_4/29/2015


Attachment B.2: TL626 Route Map 36 of 43 **CNF Power Line Replacement Projects**

- Removal
- Staging Area
- United States Forest Service
- Wood-to-Steel Replacement
- Stringing Site
- Stream
- Surveyed Drainage
- Access Road

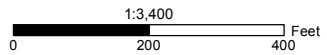
Source: SDG&E, 2015; USFS, 2015; Chambers Group, Inc., 2012




A Sempra Energy utility



1:3,400



0 200 400 Feet

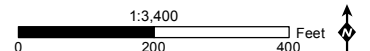




Attachment B.2: TL626 Route Map 37 of 43

CNF Power Line Replacement Projects

- Removal
- Staging Area
- Stringing Site
- Wood-to-Steel Replacement
- United States Forest Service
- Stream
- Surveyed Drainage
- Access Road



Z:\Projects\SDGE_CNF_ESRP\MXDs\Siting\Updated_POD\TL626_Mapbook.mxd 4/29/2015

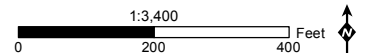
Source: SDG&E, 2015; USFS, 2015; Chambers Group, Inc., 2012



Attachment B.2: TL626 Route Map 38 of 43

CNF Power Line Replacement Projects

-  Removal
-  Staging Area
-  United States Forest Service
-  Wood-to-Steel Replacement
-  Stringing Site
-  Stream
-  Surveyed Drainage
-  Access Road



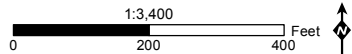
Z:\Projects\SDGE_CNF_ESRP\MXDs\Siting\Updated_POD\TL626_Mapbook.mxd_4/29/2015



Attachment B.2: TL626 Route Map 39 of 43

CNF Power Line Replacement Projects

- Removal
- Wood-to-Steel Replacement
- Staging Area
- Stringing Site
- United States Forest Service
- Stream
- Surveyed Drainage
- Access Road



Z:\Projects\SDGE_CNF_ESRP\MXDs\Siting\Updated_POD\TL626_Mapbook.mxd 4/29/2015

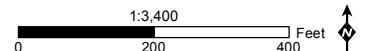
Source: SDG&E, 2015; USFS, 2015; Chambers Group, Inc., 2012



Attachment B.2: TL626 Route Map 40 of 43

CNF Power Line Replacement Projects

- Ⓡ Removal
- ▭ Staging Area
- ▭ United States Forest Service
- Ⓢ Wood-to-Steel Replacement
- ▭ Stringing Site
- ~ Stream
- ~ Surveyed Drainage
- Access Road



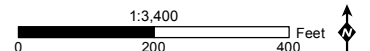
Z:\Projects\SDGE_CNF_ESRP\MXDs\Siting\Updated_POD\TL626_Mapbook.mxd 4/29/2015



Attachment B.2: TL626 Route Map 41 of 43

CNF Power Line Replacement Projects

-  Removal
-  Staging Area
-  United States Forest Service
-  Wood-to-Steel Replacement
-  Stringing Site
-  Stream
-  Surveyed Drainage
-  Access Road



Z:\Projects\SDGE_CNF_ESRP\MXDs\Siting\Updated_POD\TL626_Mapbook.mxd 4/29/2015

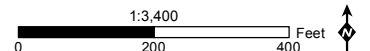
Source: SDG&E, 2015; USFS, 2015; Chambers Group, Inc., 2012



Attachment B.2: TL626 Route Map 42 of 43

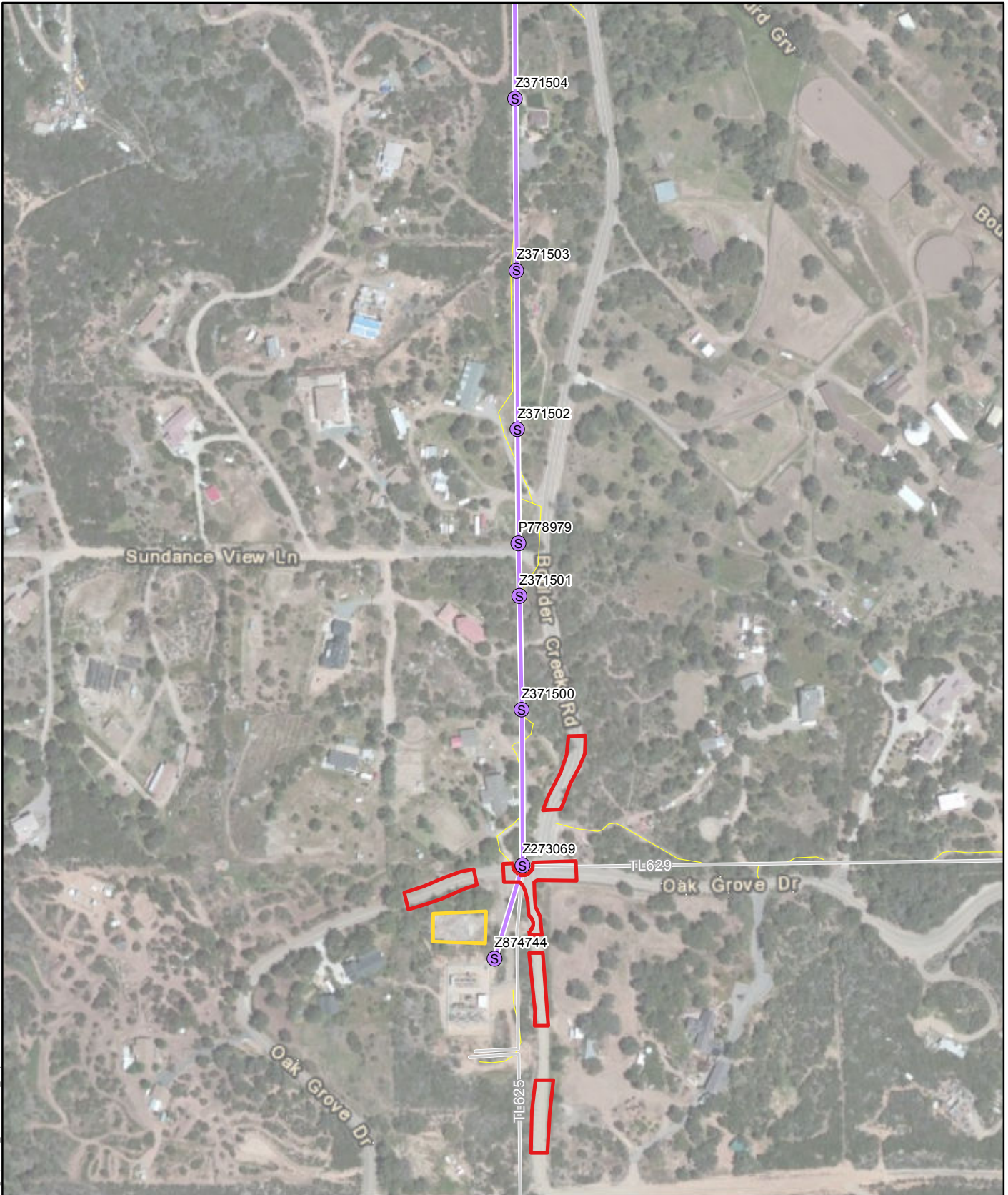
CNF Power Line Replacement Projects

-  Removal
-  Staging Area
-  United States Forest Service
-  Wood-to-Steel Replacement
-  Stringing Site
-  Stream
-  Surveyed Drainage
-  Access Road



Z:\Projects\SDGE_CNF_ESRP\MXDs\Siting\Updated_POD\TL626_Mapbook.mxd 4/29/2015

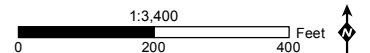
Source: SDG&E, 2015; USFS, 2015; Chambers Group, Inc., 2012



Attachment B.2: TL626 Route Map 43 of 43

CNF Power Line Replacement Projects

-  Removal
-  Staging Area
-  United States Forest Service
-  Wood-to-Steel Replacement
-  Stringing Site
-  Stream
-  Surveyed Drainage
-  Access Road



Z:\Projects\SDGE_CNF_ESRP\MapDocs\Staging\Updated_POD\TL626_Mapbook.mxd 4/29/2015

Source: SDG&E, 2015; USFS, 2015; Chambers Group, Inc., 2012