

Viewpoint Location

PROPOSED LASSEN SUBSTATION

Viewpoint 1 - Old Stage Rd. South

Camera Lens Length:	35 mm
Time Photo Taken:	12:33 PM
Date Photo Taken:	1/12/2011
Direction:	North

Project Features:
 Photo simulation shows Proposed Lassen Substation in a residential setting located adjacent to the Project.

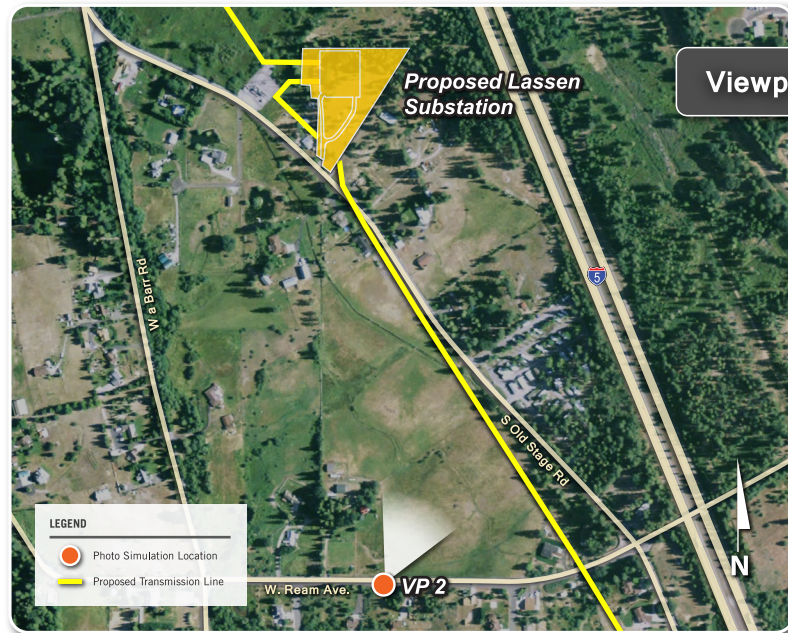


EXISTING CONDITIONS



PROPOSED CONDITIONS

Photo simulations are for demonstration purposes only. Final design may change pending review.



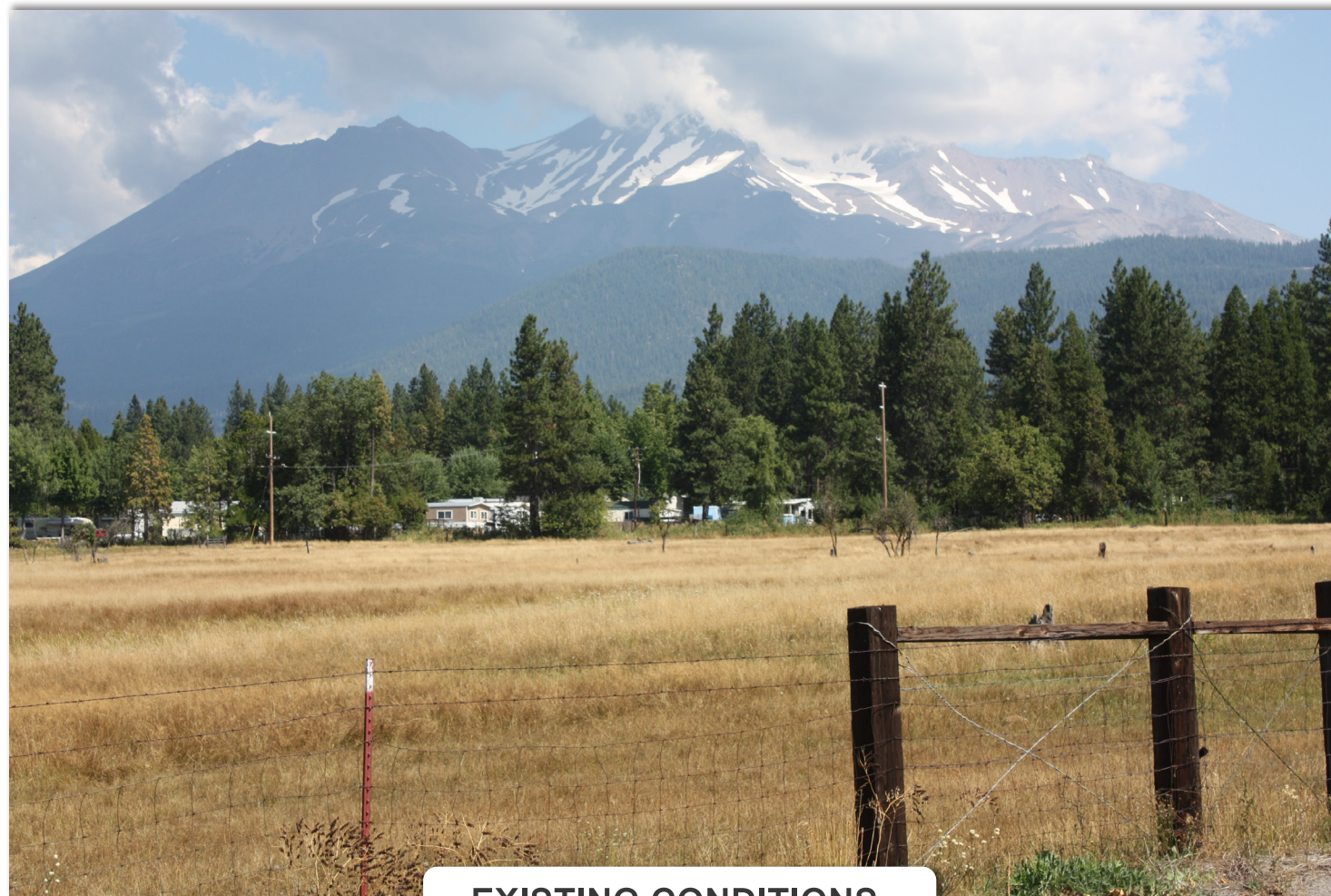
Viewpoint Location

PROPOSED LASSEN SUBSTATION

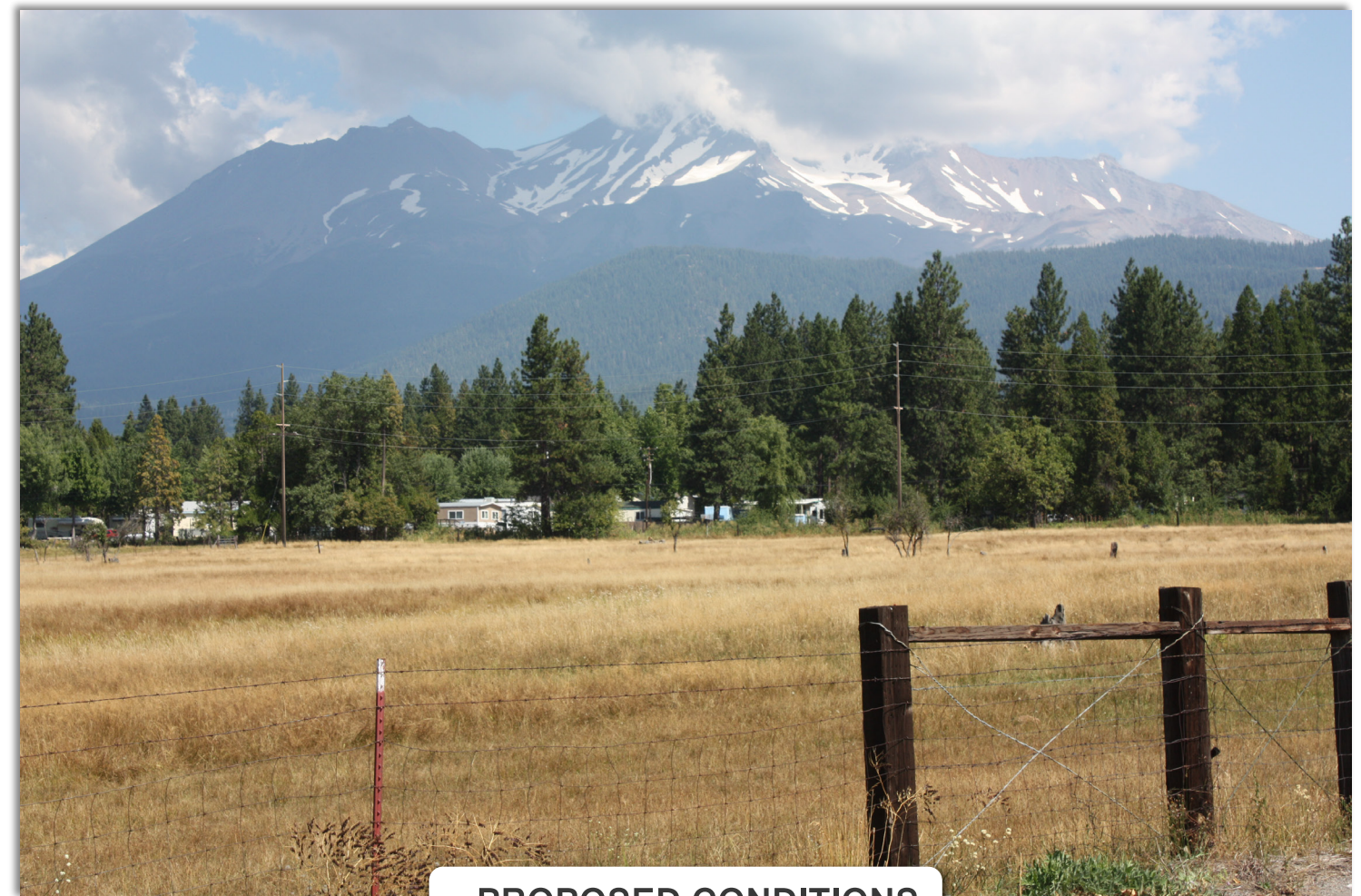
Viewpoint 2 - West Ream Ave.

Camera Lens Length:	47 mm
Time Photo Taken:	12:35 PM
Date Photo Taken:	9/13/2011
Direction:	North - Northeast

Project Features:
 Photo simulation shows rebuilt 115 kV transmission line from a public road and within a predominantly residential setting.



EXISTING CONDITIONS



PROPOSED CONDITIONS

Photo simulations are for demonstration purposes only. Final design may change pending review.



Viewpoint Location

PROPOSED LASSEN SUBSTATION

Viewpoint 3 - Old Stage Road Central

Camera Lens Length:	29 mm
Time Photo Taken:	1:15 PM
Date Photo Taken:	1/12/2011
Direction:	Northeast

Project Features:
 Photo simulation shows Proposed Lassen Substation from a public road and within a predominantly residential setting.



EXISTING CONDITIONS



PROPOSED CONDITIONS

Photo simulations are for demonstration purposes only. Final design may change pending review.



Viewpoint Location

PROPOSED LASSEN SUBSTATION

Viewpoint 6 - West from NB I-5

Camera Lens Length:	50 mm
Time Photo Taken:	3:32 PM
Date Photo Taken:	7/16/2015
Direction:	West

Project Features:
 Photo simulation shows rebuilt 115 kV transmission line from the Volcanic Legacy Scenic Byway within a pastoral landscape transportation corridor setting.



EXISTING CONDITIONS



PROPOSED CONDITIONS

Photo simulations are for demonstration purposes only. Final design may change pending review.



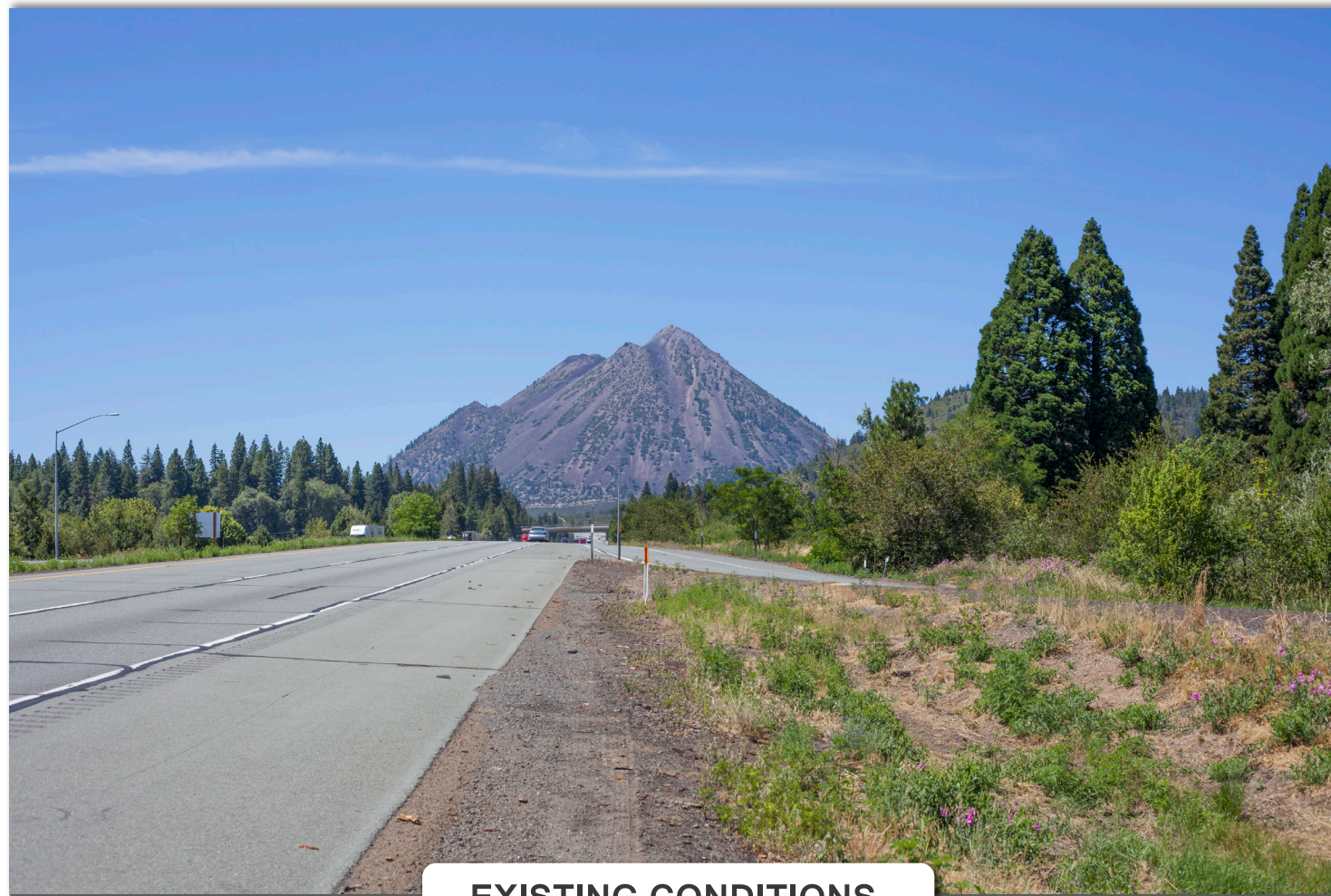
Viewpoint Location

PROPOSED LASSEN SUBSTATION

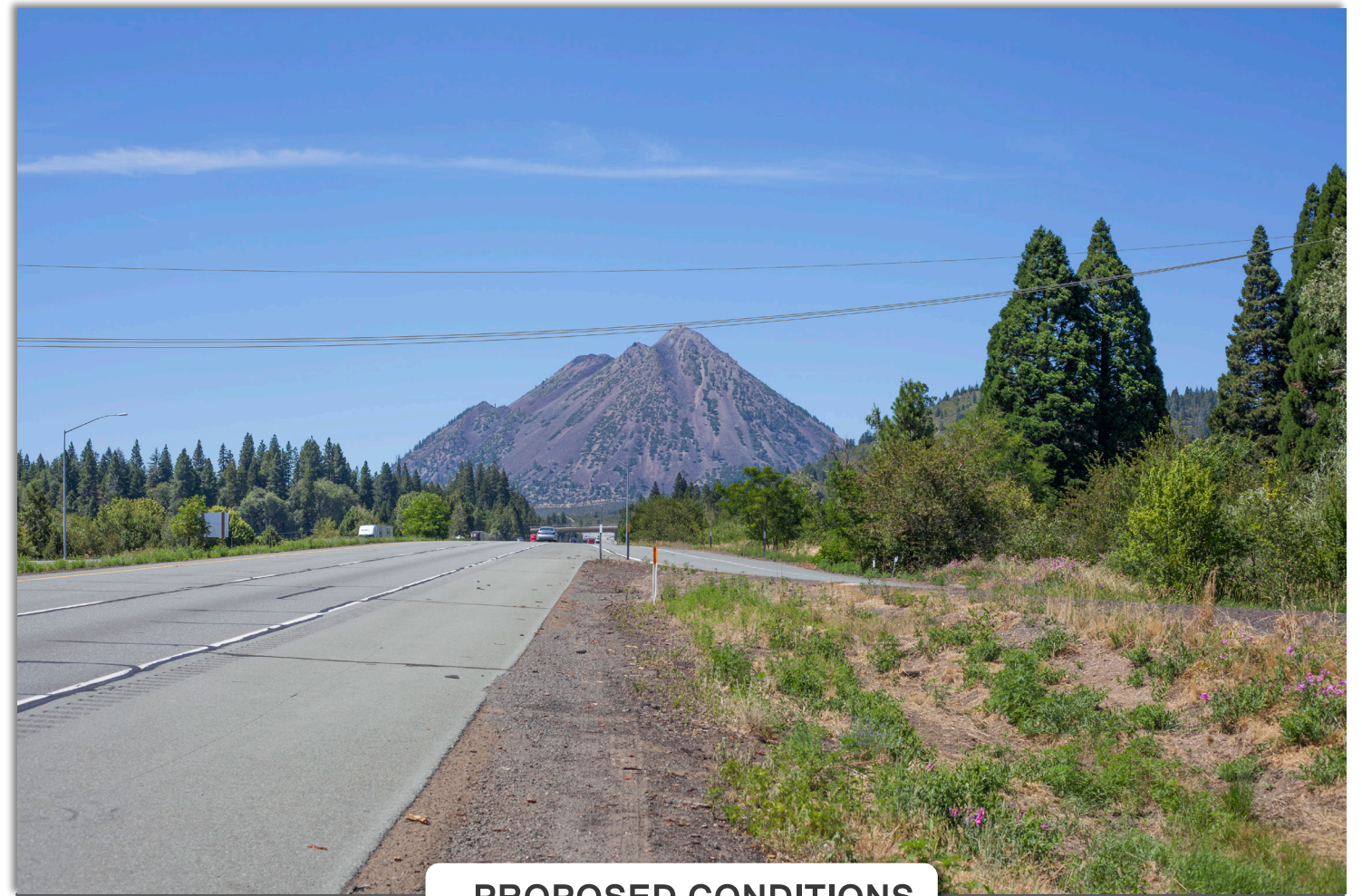
Viewpoint 10 - North from NB I-5

Camera Lens Length:	50 mm
Time Photo Taken:	3:19 PM
Date Photo Taken:	7/16/2015
Direction:	Northwest

Project Features:
 Photo simulation from the Volcanic Legacy Scenic Byway shows the new overhead distribution conductor wire within a transportation corridor setting backdropped against Mt. Eddy foothills and Spring Hill.



EXISTING CONDITIONS



PROPOSED CONDITIONS

Photo simulations are for demonstration purposes only. Final design may change pending review.