

From: [Michael Freitas](#)
To: [Robinson, Bradly](#)
Subject: Fw: Request for Utility Relocation Estimate - Mt. Shasta
Date: Thursday, November 29, 2012 8:56:22 AM
Attachments: [Request for Estimate.ltr.pdf](#)

Hi Brad,

Just a quick note to follow up on the status of the estimate to be provided that was requested in the attached letter.

Hope all is well.

Thanks,

Mike Freitas
Senior Right of Way Agent
Utility/Railroad Branch
D1 Eureka/D2 Redding
(530) 225-3361
(530) 218-8939 Cell

----- Forwarded by Michael Freitas/D02/Caltrans/CAGov on 11/29/2012 08:47 AM -----

**Michael
Freitas/D02/Caltrans/CAGov**

To
Bradly Robinson

10/30/2012 03:16 PM

cc
Dave.Araas@Pacifcorp.com, david.boese@pacifcorp.com,
Stacey Barnes/D02/Caltrans/CAGov@DOT, Clint
Burkenpas/D02/Caltrans/CAGov@DOT

Subject
Request for Utility Relocation Estimate - Mt. Shasta

Hello Brad,

Attached is a letter requesting Pacific Power provide an approximate estimate to relocate the existing electric line crossings at Mt. Shasta. Let me know if you need anything else at this time.

(See attached file: Request for Estimate.ltr.pdf)

Thank you.

Mike Freitas
Senior Right of Way Agent
Utility/Railroad Branch
D1 Eureka/D2 Redding
(530) 225-3361
(530) 218-8939 Cell

DEPARTMENT OF TRANSPORTATION

DISTRICT 2 – Right of Way Office
1031 Butte Street, Suite 205
Redding, CA 96001
PHONE (530) 225-3361
FAX (530) 225-3021
Email - mike_freitas@dot.ca.gov



*Flex your power!
Be energy efficient!*

October 30, 2012

02-Sis-5, PM 10.3/10.6
File No. 02-UT-2764
Pacific Power - Mt. Shasta

Mr. Bradly Robinson
Pacific Power
300 South Main Street
Yreka, CA 96097

Dear Mr. Robinson:

Thank you for meeting with Stacey Barnes, Clint Burkenpas, and myself last week. The meeting was to reacquaint Pacific Power with two existing electric lines crossing Interstate 5 at Mt. Shasta identified as not meeting Caltrans current High/Low Risk Utility Policy. The two crossings currently run in steel conduits within existing drainages and inside highway drainage culverts. The crossings have been allowed to be in place by a temporary encroachment exception until a permanent solution could be planned for relocation of the electric facilities. **Caltrans recognizes and agrees the cost to relocate the electric facilities will be at State expense based on Pacific Power's prior rights.**

In order for Caltrans to move forward with a project to relocate the two electric line crossings we need an estimate from Pacific Power for the cost of the relocations. The cost estimate provided will allow us to program resources for a project to relocate the electric facilities so Caltrans will be able to reimburse Pacific Power for the relocation cost. **As discussed at last week's meeting a preferred proposed plan to relocate the existing electric line crossing just south of Lake Street will be by boring under Interstate 5. The existing electric line crossing just north of Lake Street at Jessie Street would be relocated with an aerial crossing.** All conduit will need to be removed after relocation, including the conduit at the third location, which was relocated in 2003.

Please prepare an approximate estimate of cost to relocate the two electric line crossings which would include labor, material, mobilization, administrative and overhead costs and send it to me at the above address. We realize the estimate will only be an approximate cost at this time and when the final relocation plan is finalized and approved it will be revised. **When we get further into this project a Utility Agreement will be made between Pacific Power and the State which will provide for reimbursement to Pacific Power for the actual relocation cost at the time of construction.**

Thank you for your cooperation with this utility relocation project. If you have any questions or need more information please do not hesitate to contact me.


A handwritten signature in blue ink that reads "Michael E. Freitas".

Michael E. Freitas
Senior Right of Way Agent
Utility Coordination Branch

From: [Michael Freitas](#)
To: [Robinson, Bradly](#)
Subject: Re: FW: Mount Shasta Interstate 5 Crossings
Date: Wednesday, December 19, 2012 1:24:35 PM
Attachments: [2012 Interstate 5 Electric Power Crossings.docx](#)
[2012 I5 Crossing block estimates.xlsx](#)

Thanks Brad. We'll keep you updated as the project develops.

Merry Christmas and a Happy New Year.

Mike Freitas
Senior Right of Way Agent
Utility/Railroad Branch
D1 Eureka/D2 Redding
(530) 225-3361
(530) 218-8939 Cell
 "Robinson, Bradly" <Bradly.Robinson@PacifiCorp.com>

"Robinson, Bradly"
<Bradly.Robinson@PacifiCorp.com>

12/19/2012 11:59 AM

To

Michael Freitas <michael_freitas@dot.ca.gov>

cc

Subject

FW: Mount Shasta Interstate 5 Crossings

Here are some ball park costs and routes for the proposed crossings of I-5 in Mt. Shasta, CA.

BRADLY ROBINSON

From: Boese, Dave
Sent: Wednesday, December 12, 2012 2:59 PM
To: Robinson, Bradly
Cc: Araas, Dave
Subject: Mount Shasta Interstate 5 Crossings

Bradly and Dave,

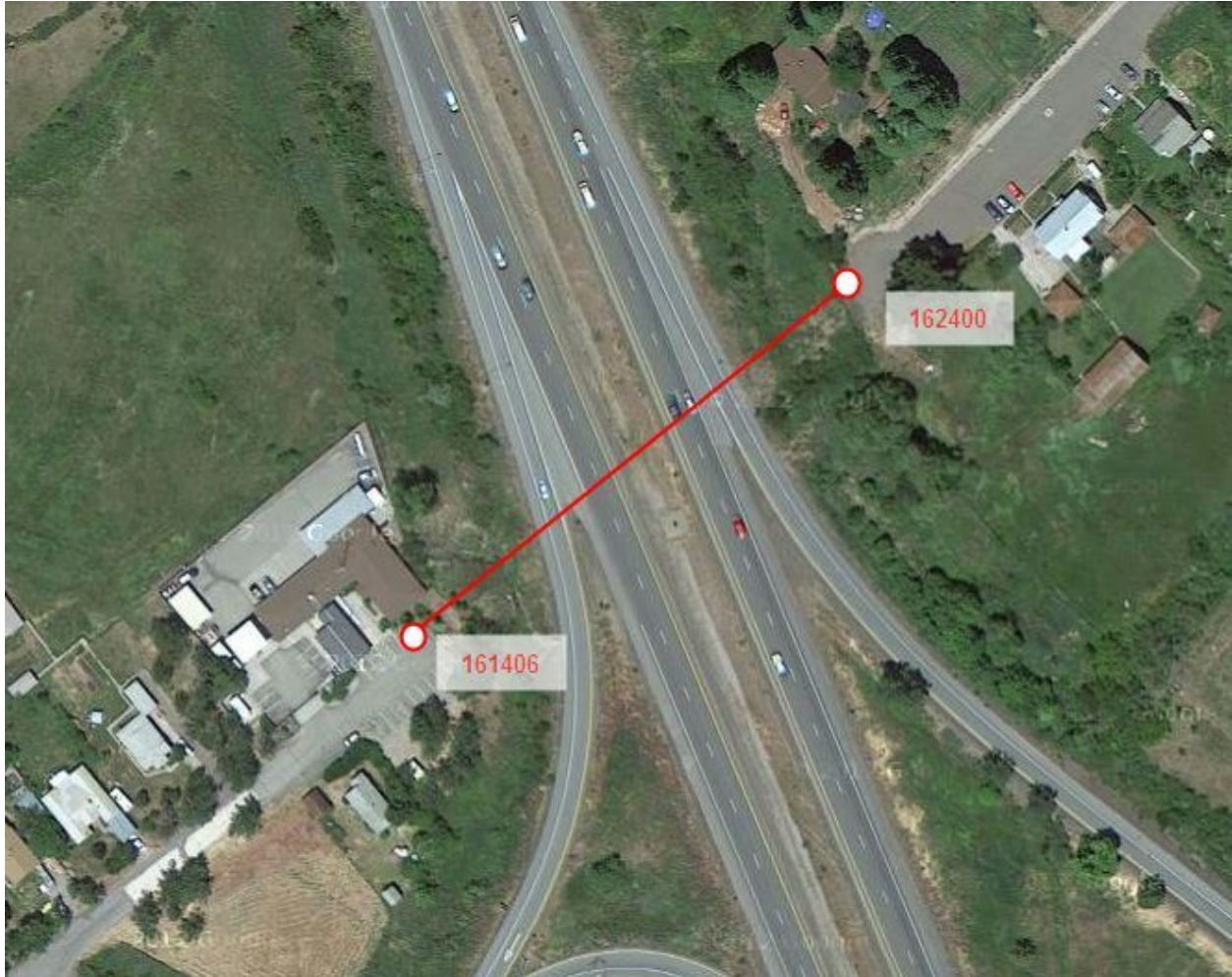
Attached are routes and costs I developed for replacing the underground power crossings in Mount Shasta. Please review and let me know if the routes and costs are reasonable. Let me know if you have any questions.

David

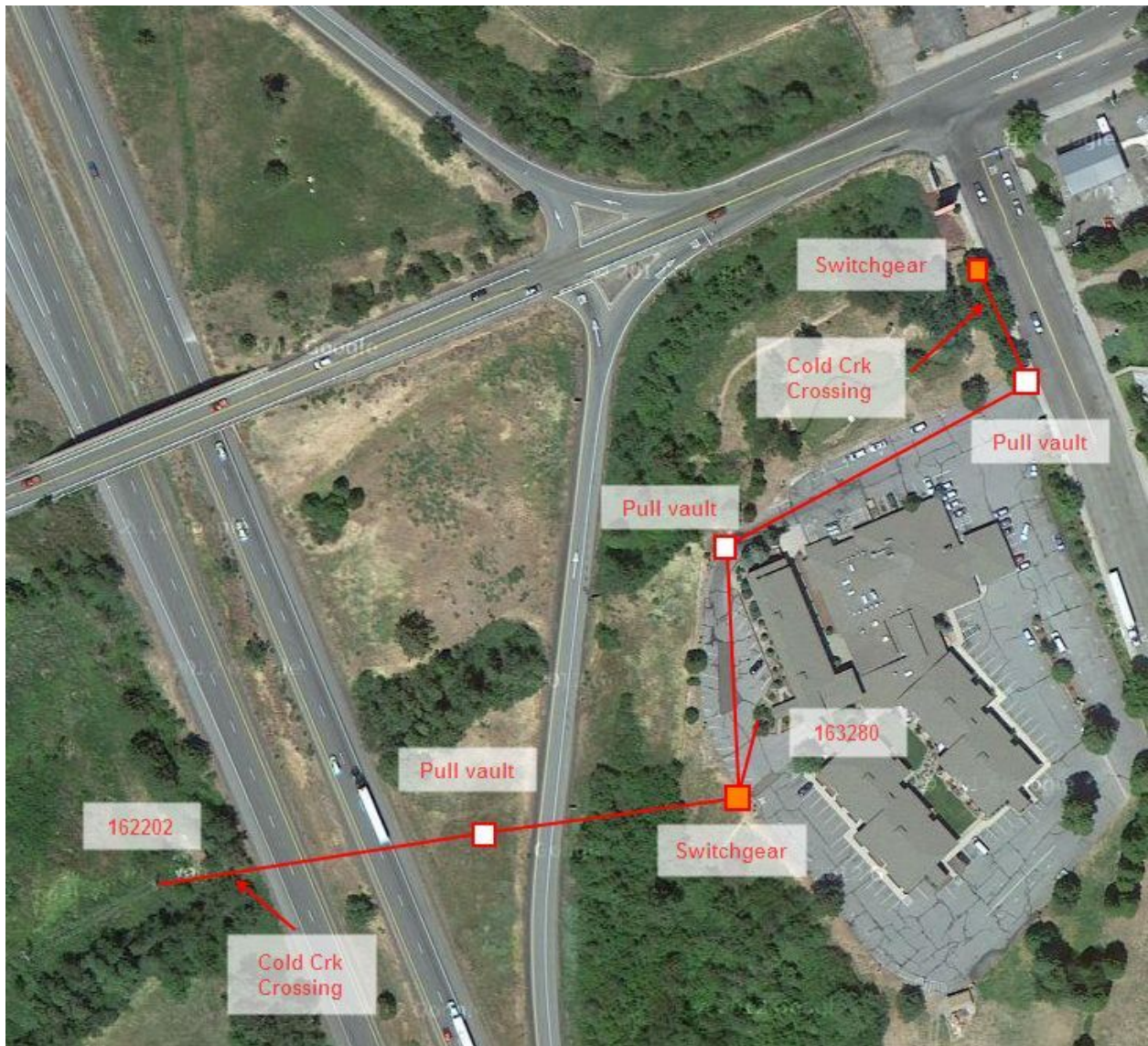
541-883-7899 (See attached file: *2012 Interstate 5 Electric Power Crossings.docx*) (See attached file: *2012 I5 Crossing block estimates.xlsx*)

Interstate 5 Electric Power Crossings, City of Mount Shasta, CA

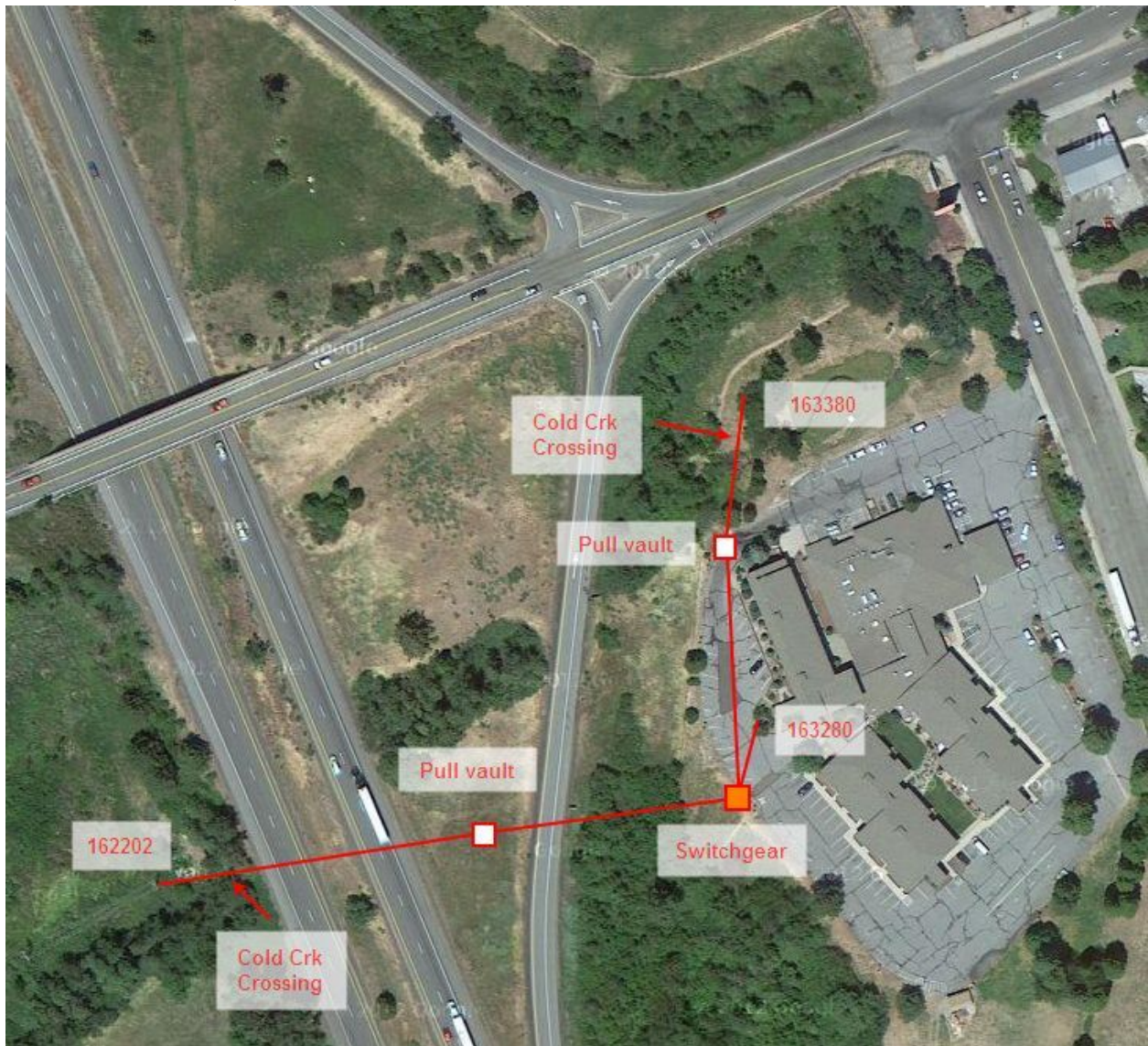
- 1) Jessie Street Crossing - Install #4/0 ACSR three phase, four wire overhead conductor from PacifiCorp facility point 06240004.0-161406 to facility point 06240004.0-162400. Approximate preliminary scope cost is \$48,000



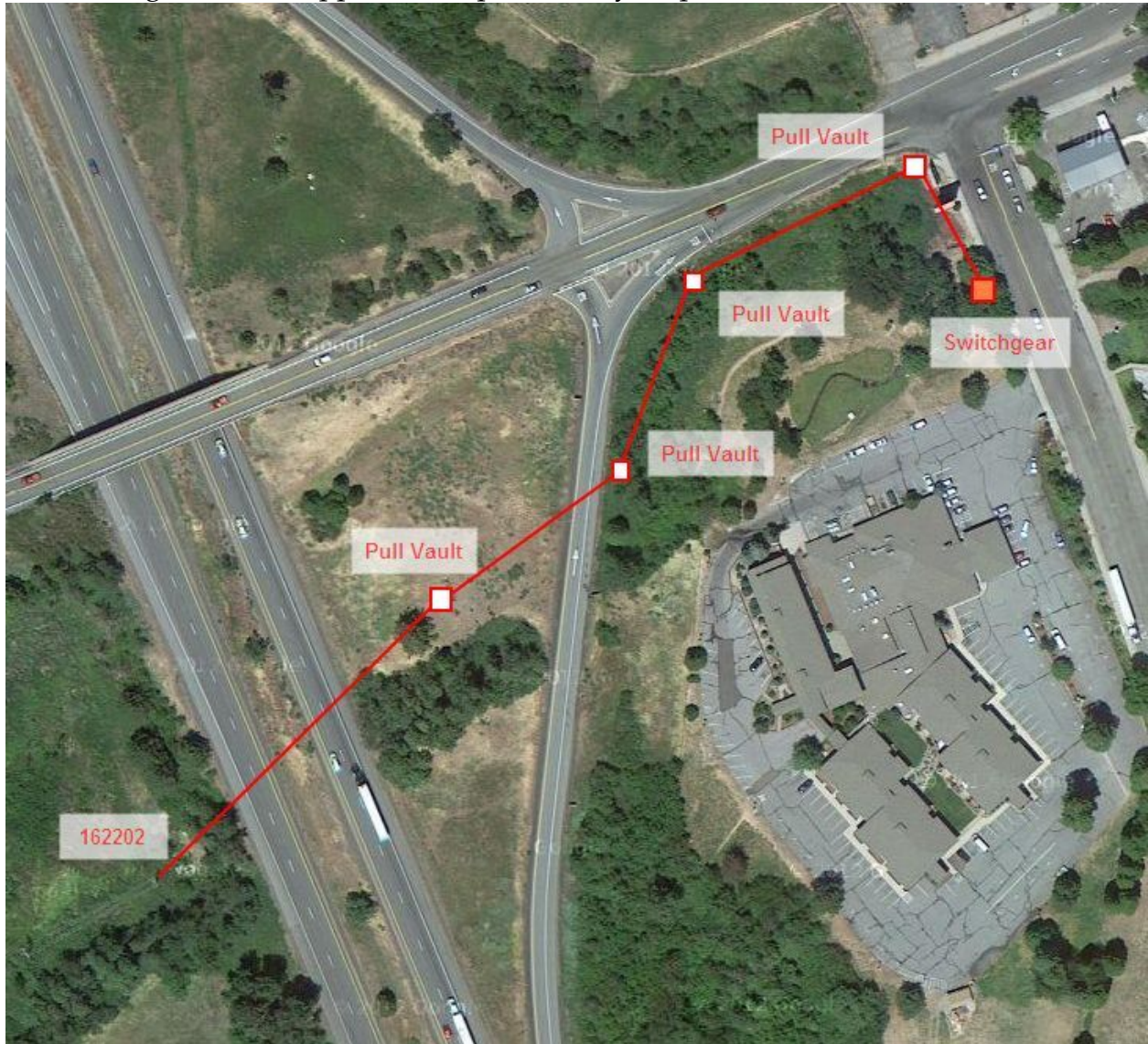
- 2) Lake Street Crossing south of interchange – Four possible routes were identified, three underground and one overhead.
- a) The first route considered is from existing facility point 162202 on the west side of Interstate 5 underground towards the Tree House Inn, through the west and north parking lots of the Tree House Inn and then north along Morgan Street to intersect with the existing underground electric power lines. Possible difficulties with this route are crossing Cold Creek at two locations, once on the west side of Interstate 5 and once along Morgan Street, possible conflicts with the Tree House Inn drainage system and unknown underground obstructions. Easements for the electric power lines and equipment are needed from the Tree House Inn. Approximate preliminary scope cost is \$407,000.



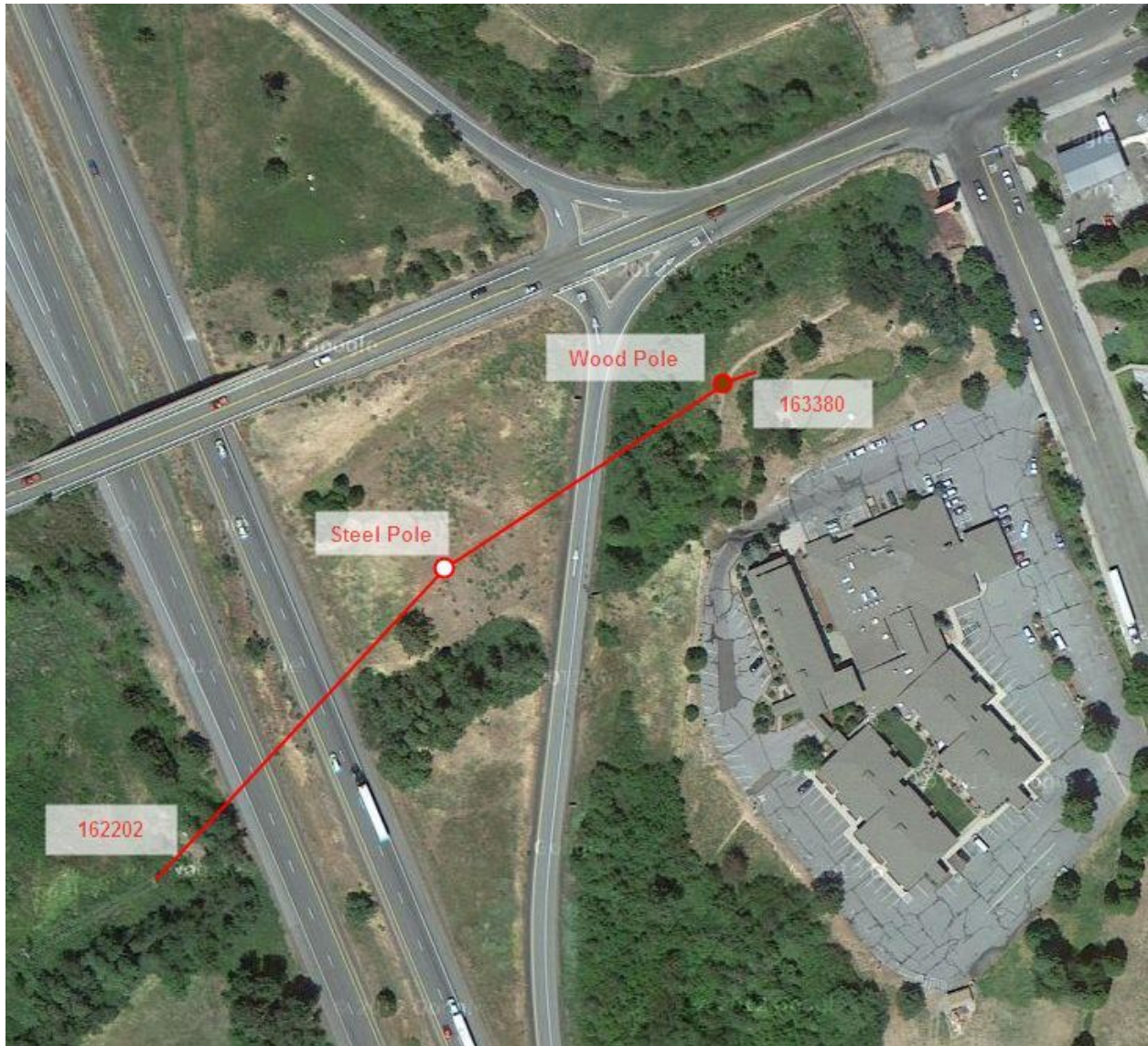
b) The second route is similar to the first route with the exception of intersecting the existing underground electric lines at facility point 06240004.0-163380. Possible difficulties with this route are crossing Cold Creek at two locations, once on the west side of Interstate 5 and once in an open creek section north of the Tree House Inn, possible conflicts with the Tree House Inn drainage system, construction equipment access to facility point 163380 and unknown underground obstructions. Easements for the electric power lines and equipment are needed from the Tree House Inn. Approximate preliminary scope cost is \$276,000.



- c) The third route starts at facility point 06240004.0-162202, crosses Interstate 5 underground towards Lake Street, follows Lake Street to Morgan Street and then south to intersect the existing underground electric lines. Difficulties are possible unknown underground obstructions and space to install electric facilities along Morgan Street. Approximate preliminary scope cost is \$345,000.



- d) The fourth route crosses Interstate 5 overhead starting at facility point 06240004.0-162202, over to a steel pole in the gore between the north bound lanes and the north bound off ramp and to a new wood pole near the existing switchgear at facility point 06240004.0-163380. The crossing is completed with new electric underground lines from the new pole location to the 163380 switchgear. A possible difficulty is construction equipment access to the area around facility point 06240004.0-163380. Approximate preliminary scope cost is \$139,000.



- 3) Removal of abandoned electric lines - The project is completed by removal of abandoned electric lines at three locations, Jessie Street, Lake Street and Lassen Lane. The approximate preliminary scope cost is \$50,000.

The total approximate preliminary scope costs with replacing the Jessie Street crossing overhead, the four Lake Street crossing options and removing abandoned electric lines are:

\$505,000 - Lake Street route a) crossing I-5 underground to the Tree House Inn and then to Morgan Street

\$374,000 - Lake Street route b) crossing I-5 underground to the Tree House Inn and then to FP 163380

\$443,000 - Lake Street route c) crossing I-5 underground to Lake Street then to Morgan Street

\$237,000 - Lake Street route d) crossing I-5 overhead to FP 163380

If an underground crossing is chosen for Lake Street and an underground obstruction is encountered the stops further construction then the overhead route is needed. Any cost of the underground construction up to the time the obstruction is encountered will add to the overhead route cost.

The costs are based on a preliminary scope. A full estimate of the project will identify additional requirements that will likely add to the cost.

From: [Michael Freitas](#)
To: [Robinson, Bradly](#)
Subject: Fw: Meet with PP&L to further discuss Mt.Shasta electric relocation
Date: Tuesday, February 05, 2013 10:53:46 AM


Hi Brad,

I have tentatively scheduled Feb. 14 for a meeting. If that day and time is good for you all please let me know.

Thanks,

Mike Freitas
 Senior Right of Way Agent
 Utility/Railroad Branch
 D1 Eureka/D2 Redding
 (530) 225-3361
 (530) 218-8939 Cell

----- Forwarded by Michael Freitas/D02/Caltrans/CAGov on 02/05/2013 10:49 AM -----

Calendar Entry Meeting			
Subject	Meet with PP&L to further discuss Mt.Shasta electric relocation	Chair	Michael Freitas/D02/Caltrans/CAGov
When	Thu 02/14/2013 10:00 AM	Where	Location PP&L Office - Yreka Reserved No rooms or resources have been reserved
	Thu 02/14/2013 11:30 AM		
Invitees	Invited	The following invitees have been invited	
	Required (to)	Don Anderson/D02/Caltrans/CAGov@DOT, Stacey Barnes/D02/Caltrans/CAGov@DOT	
Description			

Meeting is to follow up on PP&L's electric relocation plan and to discuss PP&L completing all required work including property rights, enviro compliance, etc.

From: [Robinson, Bradly](#)
To: [Boese, Dave](#)
Subject: FW: Mt. Shasta Electric Relocation
Date: Tuesday, August 06, 2013 9:56:46 AM
Attachments: [HQ Alternative X.pdf](#)
[PPL Proposed Aerial X.pdf](#)

Bradly Robinson
530 842 8603

From: Freitas, Michael E@DOT [mailto:michael.freitas@dot.ca.gov]
Sent: Friday, May 10, 2013 10:12 AM
To: Bradly Robinson (Brad.Robinson@Pacifcorp.com)
Subject: Mt. Shasta Electric Relocation

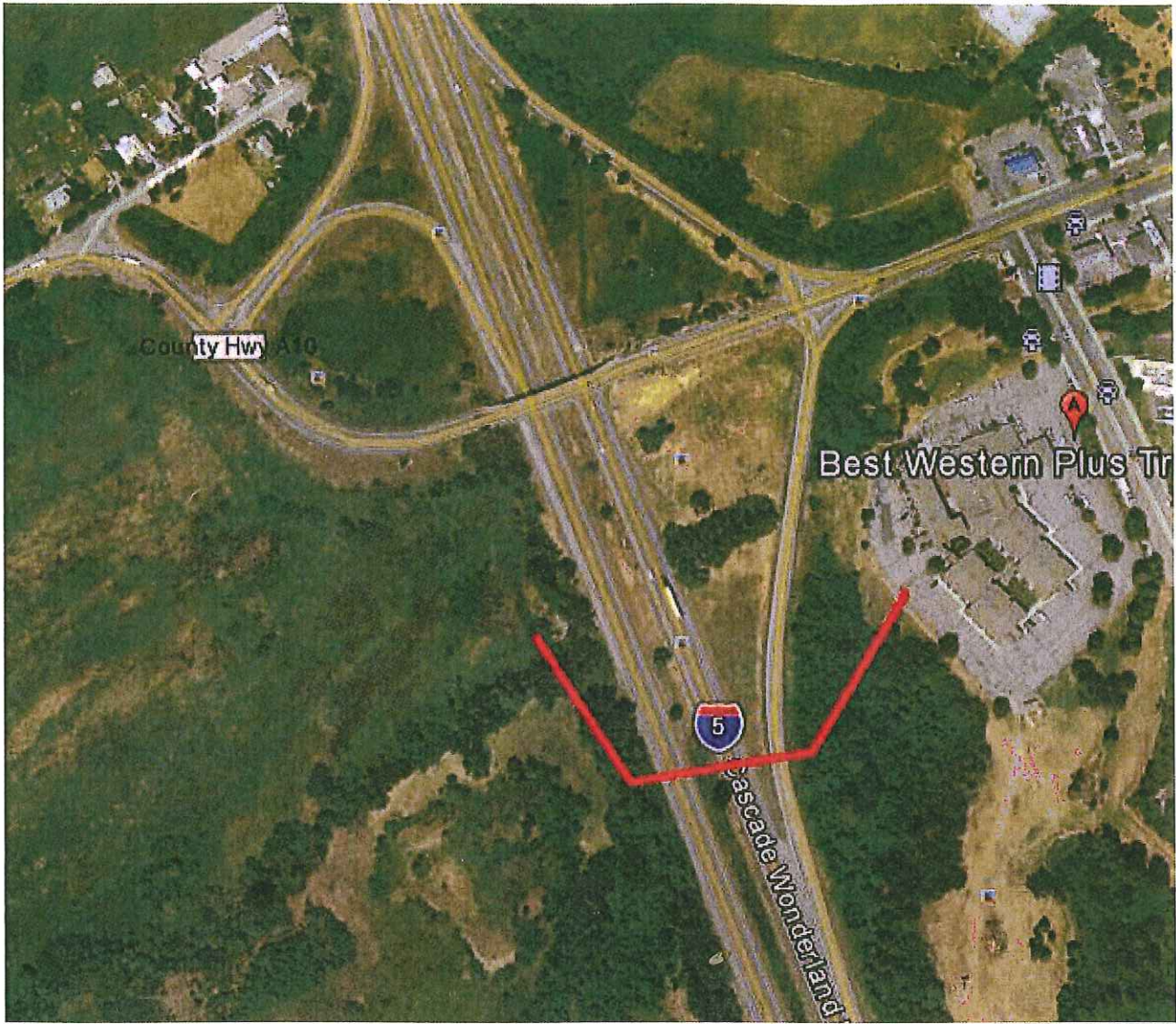
Hello Brad,

We have been attempting to have an Encroachment Exception approved for placement of the pole within the I-5 right of way as proposed on your aerial relocation plan just south of the Lake Street crossing in the City of Mt. Shasta. Headquarters Office of Exceptions has asked if an alternative plan crossing I-5 further south of the proposed crossing at the north bound off ramp entrance to the Lake Street exit was considered. I have attached an aerial view of the alternative's location. They also asked if Pacific Power could provide mapping of your facilities in the immediate area so they can have a better picture of where the existing and proposed line is coming from and going to. I have also attached the drawing of the proposed aerial crossing at this location you previously sent.

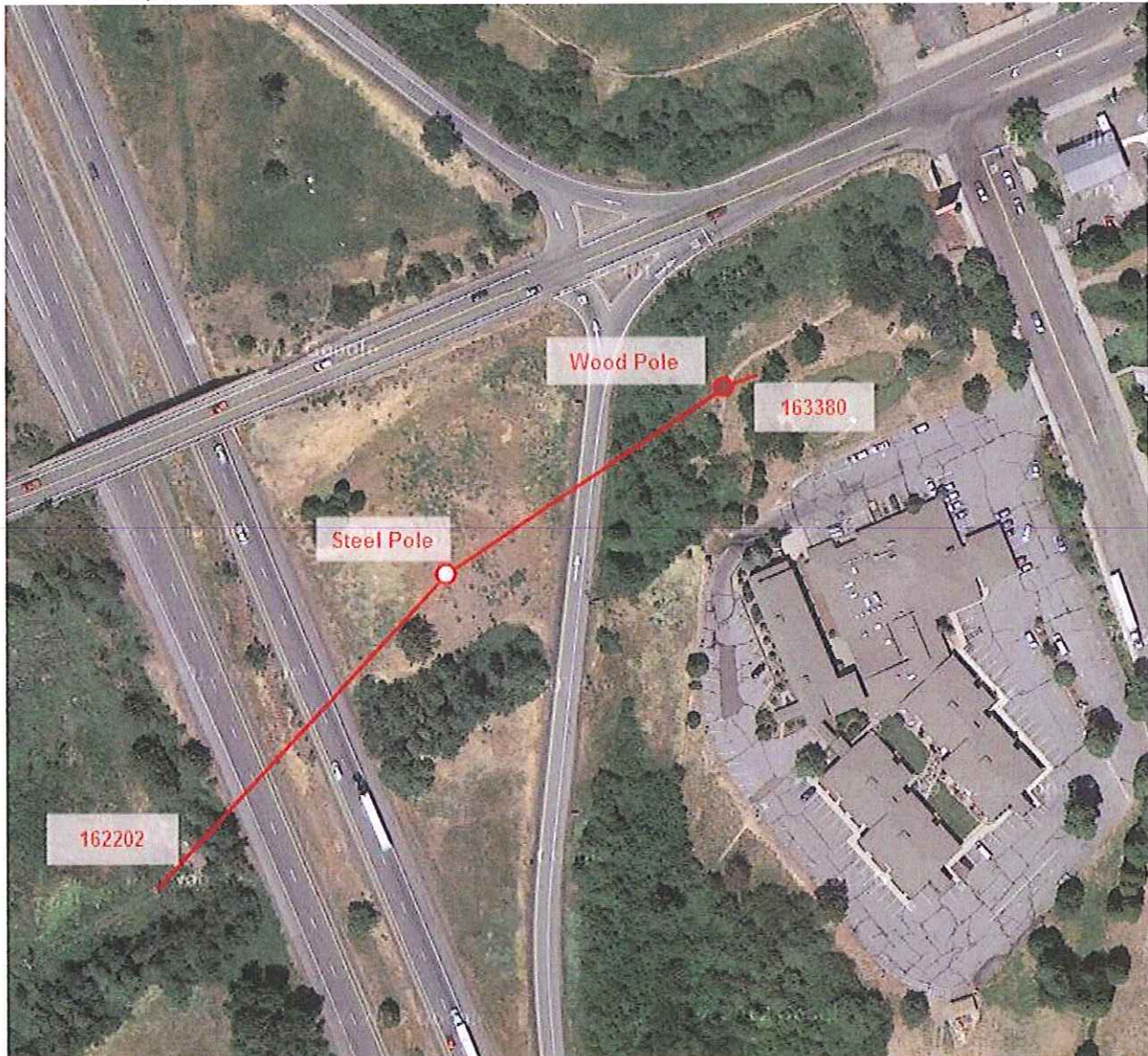
Please respond to the above questions when it is conveniently possible.

Thanks for your continued cooperation.

Mike Freitas
Senior R/W Agent
Utility/Railroad Branch
D1 Eureka/D2 Redding
(530) 225-3361
(530) 218-8939 Cell



- d) The fourth route crosses Interstate 5 overhead starting at facility point 06240004.0-162202, over to a steel pole in the gore between the north bound lanes and the north bound off ramp and to a new wood pole near the existing switchgear at facility point 06240004.0-163380. The crossing is completed with new electric underground lines from the new pole location to the 163380 switchgear. A possible difficulty is construction equipment access to the area around facility point 06240004.0-163380. Approximate preliminary scope cost is \$139,000.



From: [Barnes, Stacey@DOT](mailto:Barnes_Stacey@DOT)
To: [Robinson, Bradly](mailto:Robinson_Bradly)
Cc: [Freitas, Michael E@DOT](mailto:Freitas_Michael E@DOT)
Subject: Relocation
Date: Friday, August 16, 2013 2:21:40 PM
Attachments: [02-364302.pdf](#)

The exception was approved, finally! We'll be talking in the near future about further project relocation details.

Have a great weekend!

Stacey

From: Krichevsky, Larisa V@DOT
Sent: Friday, August 16, 2013 2:13 PM
To: Barnes, Stacey@DOT; Jones, Linda S@DOT; Shellooe, Suzette@DOT; Sykes, Heidi G@DOT; Brownell, Lori J@DOT; Dickinson, Patti-Jo H@DOT; Fong, Linda K@DOT; Franklin Iii, Thomas J@DOT; Lassiter, David L@DOT; Ramsey, Alice L@DOT; Reilly, Paul F@DOT; Weaver, Rich A@DOT
Subject: 02-364302

Attached is an approved variance. Hard copy is in the mail.

Larisa Krichevsky
Sr. Transportation Engineer
Encroachment Exceptions
Division of Design
Phone (916) 653-3830
Fax (916) 653-2124
MS #28
<http://onramp/hq/design/ctcronrc/encroachment.php>


Memorandum

*Flex your power!
Be energy efficient!*

To: STACEY BARNES - 02
Chief, Office of Encroachment Permits

Date: August 16, 2013

File: 02-364302
02-Sis-5-10.5
617

From: 
LINDA FONG
Chief, Encroachment Exceptions
Division of Design – MS 28

Subject: REQUEST FOR EXCEPTION TO CALTRANS' ENCROACHMENT POLICY

Your request for an exception, dated April 26, 2013 (received August 9, 2013, with additional information received through August 15, 2013), to allow for the relocation of a Pacific Power line within the State right of way, is conditionally approved.

On July 14, 2000 an exception was approved to allow for an existing Pacific Power electrical high voltage line (contained in conduit) to remain inside a drainage culvert within the State right of way. The approval required the electrical line to be relocated within five years.

Current request will involve the removal of the existing 4.16kV electric line from within a 36-inch reinforced concrete pipe (RCP) culvert under the freeway near the Lake Street Interchange. The electric line will be relocated to cross Route 5 as an overhead facility with one steel pole in the interchange gore area of the northbound off-ramp at Lake Street. The pole will be located outside of the clear recovery zone on a slope behind a grove of trees.

If the Lake Street Overcrossing is replaced or widened, the Pacific Power electrical line may be incorporated within the structure.

Conditions of approval:

1. This approval does not set any precedents.
2. All work on the State highway will be done in conformance to the Department's construction and safety policies, guidelines and standards.
3. Maintenance access is subject to the approval of the District Traffic Manager and shall require a separate permit request for each access.

STACEY BARNES - 02

August 16, 2013

Page 2

cc: PJDickinson – HQ Maintenance
LBrownell – HQ R/W
TFranklin – HQ Traffic Operations
RWeaver – HQ Environmental
JDeLuca – HQ Design
HSykes – HQ Design
LFong
PReilly
Design Files

LFong/LKrichevsky: