


| | |
|---|---|
|  | <p>California Public Utilities Commission <i>Mitigation Monitoring, Compliance, and Reporting Program</i></p> |
| | <p>Mira Sorrento Distribution Substation Project</p> <p>Compliance Status Report: 013</p> <p>October 6, 2013</p> |

SUMMARY

The California Public Utilities Commission (CPUC) is responsible for overseeing implementation of the mitigation measures set forth in the Final Mitigated Negative Declaration (MND) for the Mira Sorrento Distribution Substation Project. The CPUC has established a third-party monitoring program and adopted a Mitigation Monitoring, Compliance, and Reporting Program (MMCRP) to ensure that measures approved in the MND to mitigate or avoid impacts are implemented in the field. This MMCRP status report is intended to provide a description of construction activities on the project, a summary of site inspections conducted by the CPUC’s third-party monitors, the compliance status of mitigation measures required by the MMCRP, and anticipated construction activities. This compliance status report covers construction activities from September 30, to October 6, 2013.

MITIGATION MONITORING, COMPLIANCE, AND REPORTING

Site Inspections/Mitigation Monitoring

A CPUC third-party environmental compliance monitor conducted site observations at the Mira Sorrento Distribution Substation project site within the surveyed work limits. Areas of active and inactive construction within the project limits were observed to verify implementation of the mitigation measures stipulated in the project’s MMCRP. Site observations were documented on daily site inspection forms and applicable mitigation measures were reviewed in the field.

Implementation Actions

Construction activities during the reporting period consisted erecting a retaining wall along the eastern limits of the project site (see Photos 1 and 2 – Attachment A). Retaining wall construction consisted of using an excavator to place soil along the top of geogrid fabric for each layer of retaining wall blocks. Construction crews reported that the top of the retaining wall is up to an elevation of approximately 150.5 feet AMSL. Import material is being hauled to the project site and is mixed with soils onsite for placement as backfill behind the retaining wall.

In accordance with MM BIO-3, onsite personnel attended the Worker Environmental Awareness Program (WEAP) training by SDG&E. As part of the WEAP, workers were provided with general provisions to follow, a brief overview of the environmental monitors and their responsibilities, information on biological, paleontological, and cultural resources, and project requirements regarding noise, hazardous materials, water quality, and traffic. Approximately 144 personnel have attended the WEAP training to date.

In accordance with MM-HYD-1, SDG&E has prepared a Storm Water Pollution Prevention Plan (SWPPP) under the General Construction Permit, and is implementing Best Management Practices (BMPs) to avoid or minimize potential impacts to water quality. Storm water control BMPs observed on-site included silt fence and straw bales along the eastern perimeter, straw wattles on the face of cut slopes created during excavation, and silt fencing and k-rail along the western perimeter. A street sweeper was observed being utilized along Mira Sorrento Place to minimize trac-out along paved roadway surfaces (see Photo 3 – Attachment A).

In accordance with MM TT-1 traffic control signage was in place along Mira Sorrento Place notifying motorists of construction activities. A flagger was observed along Mira Sorrento Place directing construction traffic during deliveries of fill material to the project site (see Photo 4 – Attachment A).

Mitigation Measure Tracking

Mitigation measures applicable to the construction activities were verified in the field and documented in the CPUC's mitigation measure tracking database. A complete list of mitigation measures and applicant proposed measures is included in the MND for the Mira Sorrento Distribution Substation Project, as adopted by the CPUC on December 27, 2012 (Decision D.12-12-017).

Compliance

Pre-construction mitigation measures have been completed as indicated in CPUC NTP No. 001 (see Attachment B). Applicable mitigation measures were verified during site inspections and were determined to be implemented in accordance with the MMCRP.

CONSTRUCTION PROGRESS

Construction activities during this reporting period consisted of erecting a retaining wall along the eastern project limits.

CONSTRUCTION SCHEDULE

Mira Sorrento Distribution Substation Construction (CPUC NTP No. 001) – SDG&E began clearing activities at the Mira Sorrento project site on July 8, 2013. Grading activities are scheduled to be completed by January 1, 2014.

ATTACHMENT A

Photos



Photo 1: Overview of the Mira Sorrento Substation looking south from Mira Sorrento Place. Crews can be seen placing geogrid fabric associated with the retaining wall construction.



Photo 2: Construction of the retaining wall along the eastern project limits. Construction crews reported that the top of the retaining wall is up to an elevation of approximately 150.5 feet AMSL.

ATTACHMENT A (Continued)



Photo 3: A street sweeper is being utilized along Mira Sorrento Place to minimize trac-out along paved roadway surfaces.

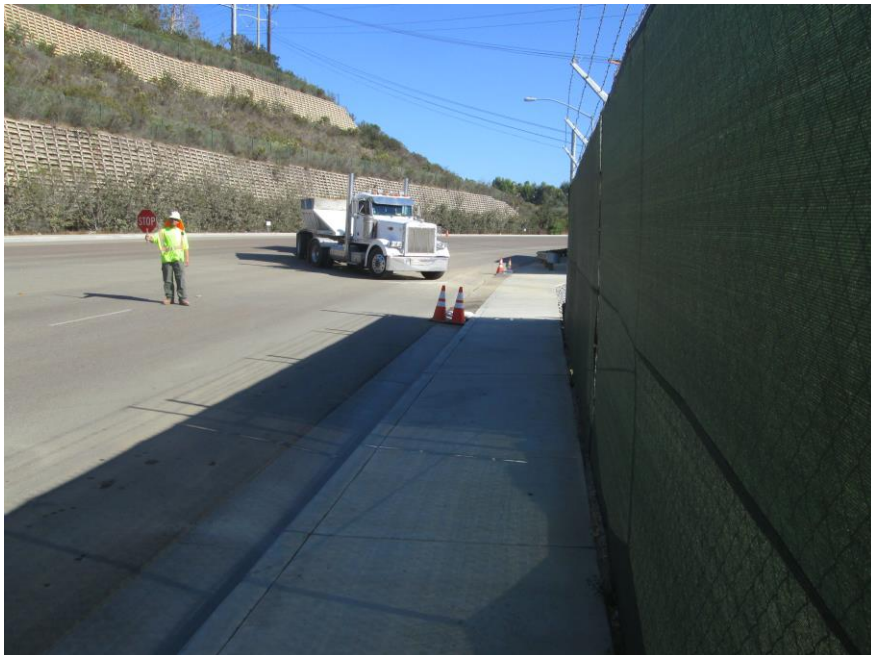


Photo 4: In accordance with MM-TT-1, a flagger was observed along Mira Sorrento Place directing construction traffic during deliveries of fill material to the project site

ATTACHMENT B Notices to Proceed

| NTP No. | Date Issued | Description | Conditions Included (Y/N) |
|------------|---------------|---|---------------------------|
| CPUC - 001 | June 21, 2013 | Construction of the Mira Sorrento Distribution Substation Project | Y |

ATTACHMENT C

Minor Project Refinement Request

| Minor Project Refinement Request No. | Submitted | Description | Status | Approval |
|--------------------------------------|-----------|-------------|--------|----------|
| N/A | N/A | N/A | N/A | N/A |