

Source: Invenergy 2012; SDGE 2012; Bing 2012

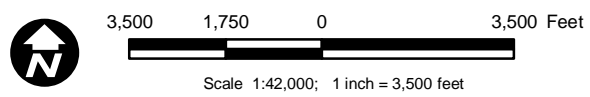
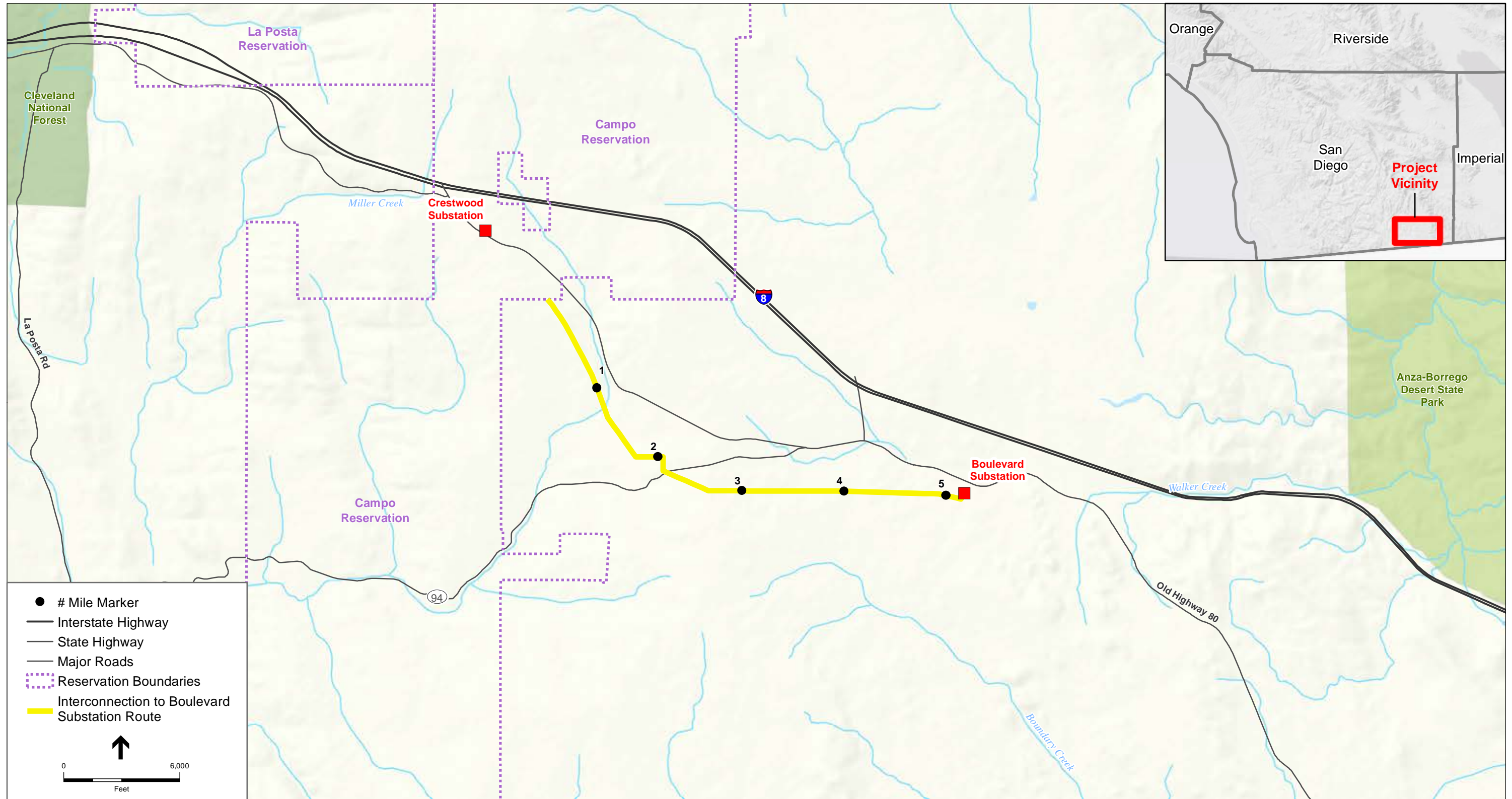


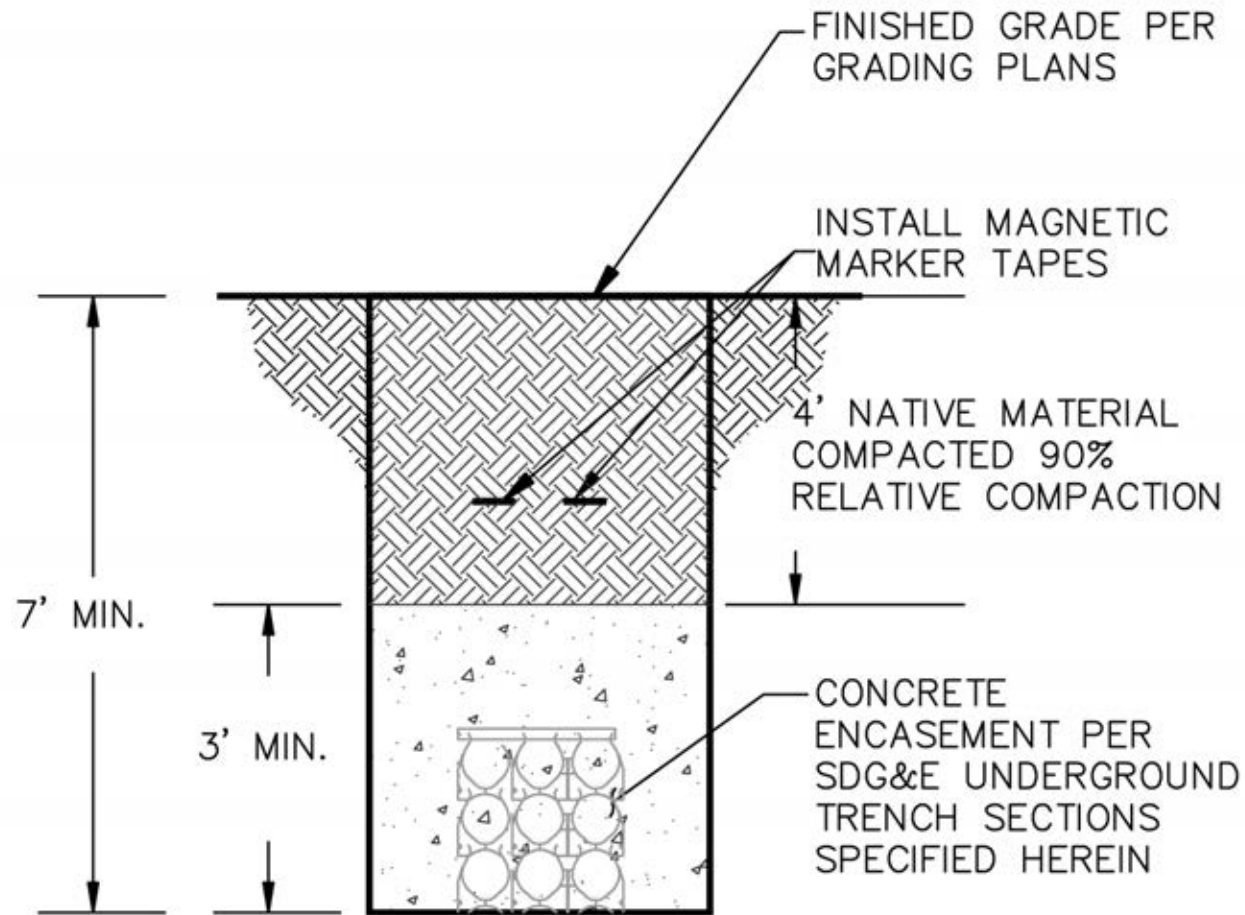
Figure 2-8
Turbine Corridor
Alternative 3



SOURCE: Sempra Utilities (2011), ESRI (2010), USGS (2010)

TL 6931 Fire Hardening / Wind Interconnect Project . 210582

Figure 3-1
Project Location Map

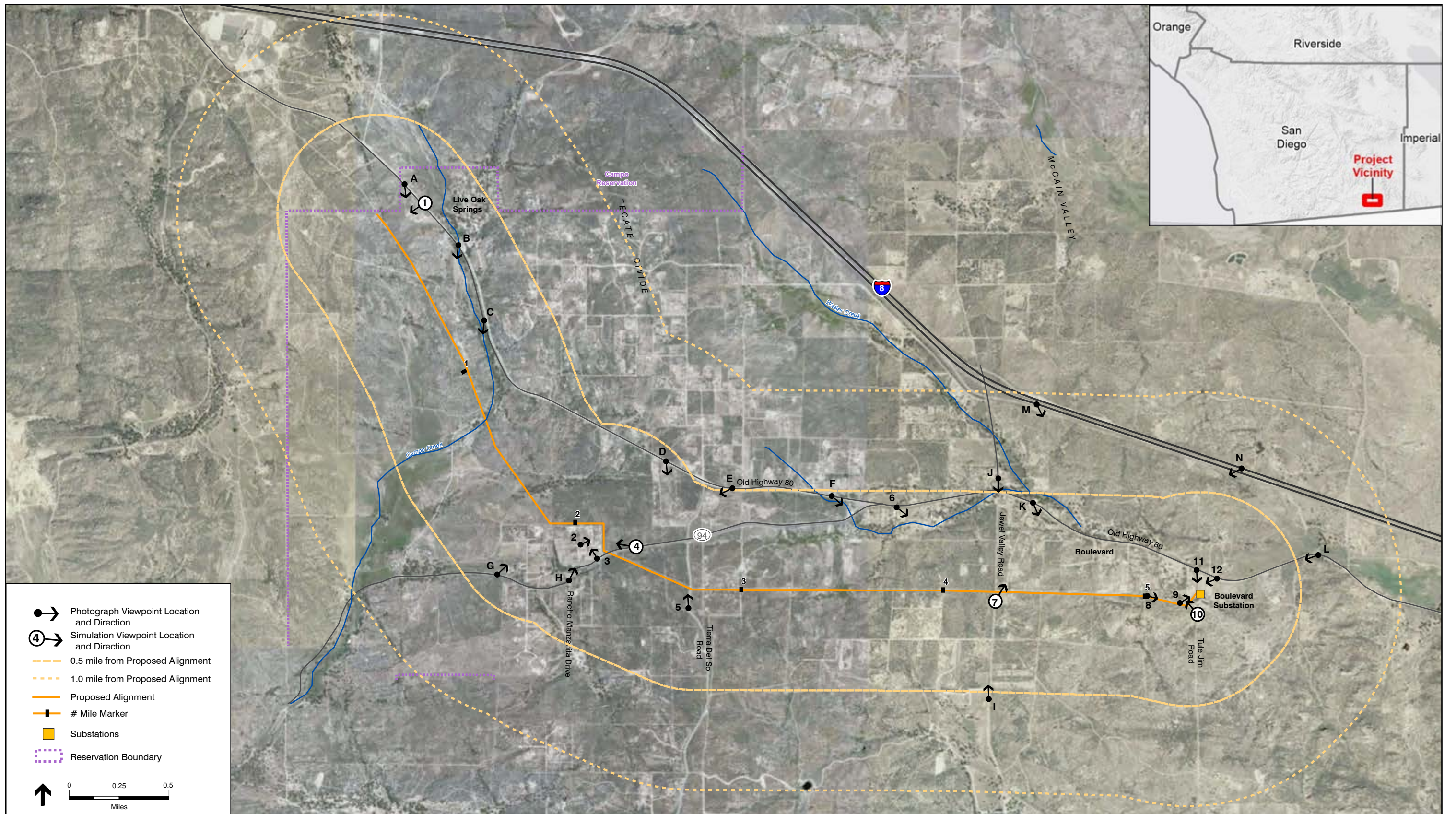


TRENCH DETAIL

(TYPICAL)

REF. SDG&E STANDARD DWG 33002 MODIFIED

NO SCALE



021313

SOURCE: Environmental Vision, Sempra Utilities (2011), ESRI (2013)

TL 6931 Fire Hardening / Wind Interconnect Project . 210582

Figure 4.1-2 rev
Photograph Viewpoint Locations



1. Old Highway 80 near Live Oak Springs looking southwest* - Two poles along project route are visible, with lower portions screened by existing vegetation.



2. Residence near SR-94 and Rancho Manzanita Drive looking northeast - Two existing TL-6931 poles are visible, but are partially screened by vegetation. Proposed alignment almost fully screened by intervening topography and vegetation.

* Simulation View

Refer to Figure 4.1-2 for photograph viewpoint locations.



3. SR-94 looking north - Two existing TL-6931 poles are visible, but partially screened by intervening topography and vegetation. Proposed alignment partially screened by intervening topography and vegetation.



4. SR-94 looking west - Existing poles and project route partially screened by vegetation.

Refer to Figure 4.1-2 for photograph viewpoint locations.

Source: Environmental Vision

TL 6931 Fire Hardening / Wind Interconnect Project . 210582

Figure 4.1-3b
Photographs of the Project and Vicinity



5. Tierra Del Sol Road looking north - Lower portions of existing poles screened by vegetation.



6. Old Highway 80 near SR 94 looking southeast - Project route partially screened by vegetation.

Refer to Figure 4.1-2 for photograph viewpoint locations.
Source: Environmental Vision — TL 6931 Fire Hardening / Wind Interconnect Project . 210582



7. Jewel Valley Road looking northeast* - Lower portion of existing poles screened by vegetation.



8. Ross Avenue at McCain Lane looking east - Proposed alignment on the right side of the road partially screened by vegetation.

* Simulation View

Refer to Figure 4.1-2 for photograph viewpoint locations.



9. Eady Lane near Tule Jim Lane looking northeast



10. Tule Jim Lane near Eady Lane looking north* - Lower portion of poles screened by vegetation.

* Simulation View
Refer to Figure 4.1-2 for photograph viewpoint locations.



11. Old Highway 80 at Ozz Road looking south - Proposed alignment partially screened by vegetation.



12. Old Highway 80 looking southwest - Boulevard substation is visible against the sky on the left, existing poles and the proposed alignment partially screened by vegetation.

Refer to Figure 4.1-2 for photograph viewpoint locations.

Source: Environmental Vision

TL 6931 Fire Hardening / Wind Interconnect Project . 210582



A. Old Highway 80 north of Live Oak Springs looking south - Project route fully screened by intervening terrain and vegetation.



B. Old Highway 80 near Live Oak Springs looking south - Project route fully screened by vegetation.

Photograph source - GoogleEarth 2013.
Refer to Figure 4.1-2 for photograph viewpoint locations.

Source: Environmental Vision

TL 6931 Fire Hardening / Wind Interconnect Project . 210582

Figure 4.1-3g
Photographs of the Project and Vicinity



C. Old Highway 80 looking south - Project route fully screened by vegetation.



D. Old Highway 80 looking south - Project route partially screened by intervening terrain and vegetation.

Photograph source - GoogleEarth 2013.
Refer to Figure 4.1-2 for photograph viewpoint locations.

Source: Environmental Vision

TL 6931 Fire Hardening / Wind Interconnect Project . 210582



E. Old Highway 80 looking southwest - Project route fully screened by intervening terrain and vegetation.



F. Old Highway 80 near Boulevard looking southeast - Project route fully screened by vegetation.

Photograph source - GoogleEarth 2013.
Refer to Figure 4.1-2 for photograph viewpoint locations.

Source: Environmental Vision

TL 6931 Fire Hardening / Wind Interconnect Project . 210582



G. SR-94 looking northeast - Project route partially screened by intervening topography and vegetation.



H. SR-94 looking northeast - Project route almost fully screened by intervening topography and vegetation.

Photograph source - GoogleEarth 2013.
Refer to Figure 4.1-2 for photograph viewpoint locations.

Source: Environmental Vision

TL 6931 Fire Hardening / Wind Interconnect Project . 210582

Figure 4.1-3j
Photographs of the Project and Vicinity



I. Jewel Valley Road looking north - Project route fully screened by intervening topography and vegetation.



J. Highway 94 in Boulevard looking south - Project route almost fully screened by vegetation.

Photograph source - GoogleEarth 2013.
Refer to Figure 4.1-2 for photograph viewpoint locations.

Source: Environmental Vision

TL 6931 Fire Hardening / Wind Interconnect Project . 210582



K. Old Highway 80 in Boulevard looking southeast - Project route almost fully screened by intervening topography and vegetation.



L. Old Highway 80 looking west - Project route fully screened by intervening topography and vegetation.

Photograph source - GoogleEarth 2013.
Refer to Figure 4.1-2 for photograph viewpoint locations.

Source: Environmental Vision

TL 6931 Fire Hardening / Wind Interconnect Project . 210582

Figure 4.1-3I
Photographs of the Project and Vicinity



M. I-8 eastbound looking southeast - Project route fully screened by intervening topography.



N. I-8 westbound looking southwest - Project route fully screened by intervening topography.

Photograph source - GoogleEarth 2013.
Refer to Figure 4.1-2 for photograph viewpoint locations.

Source: Environmental Vision

TL 6931 Fire Hardening / Wind Interconnect Project . 210582

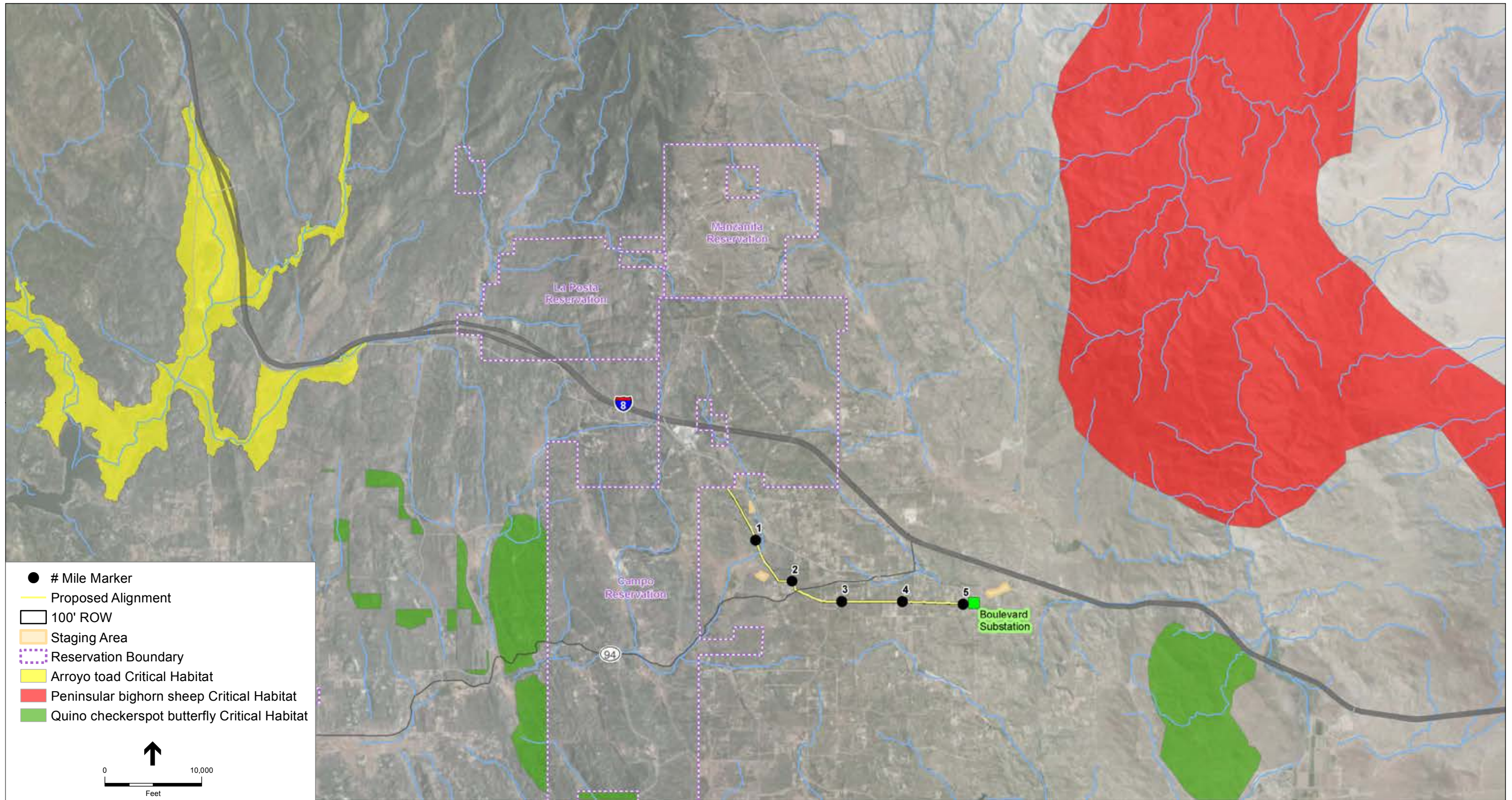


Existing View from Old Highway 80 near Live Oak Springs looking southwest (VP 1)



Visual Simulation of Proposed Project

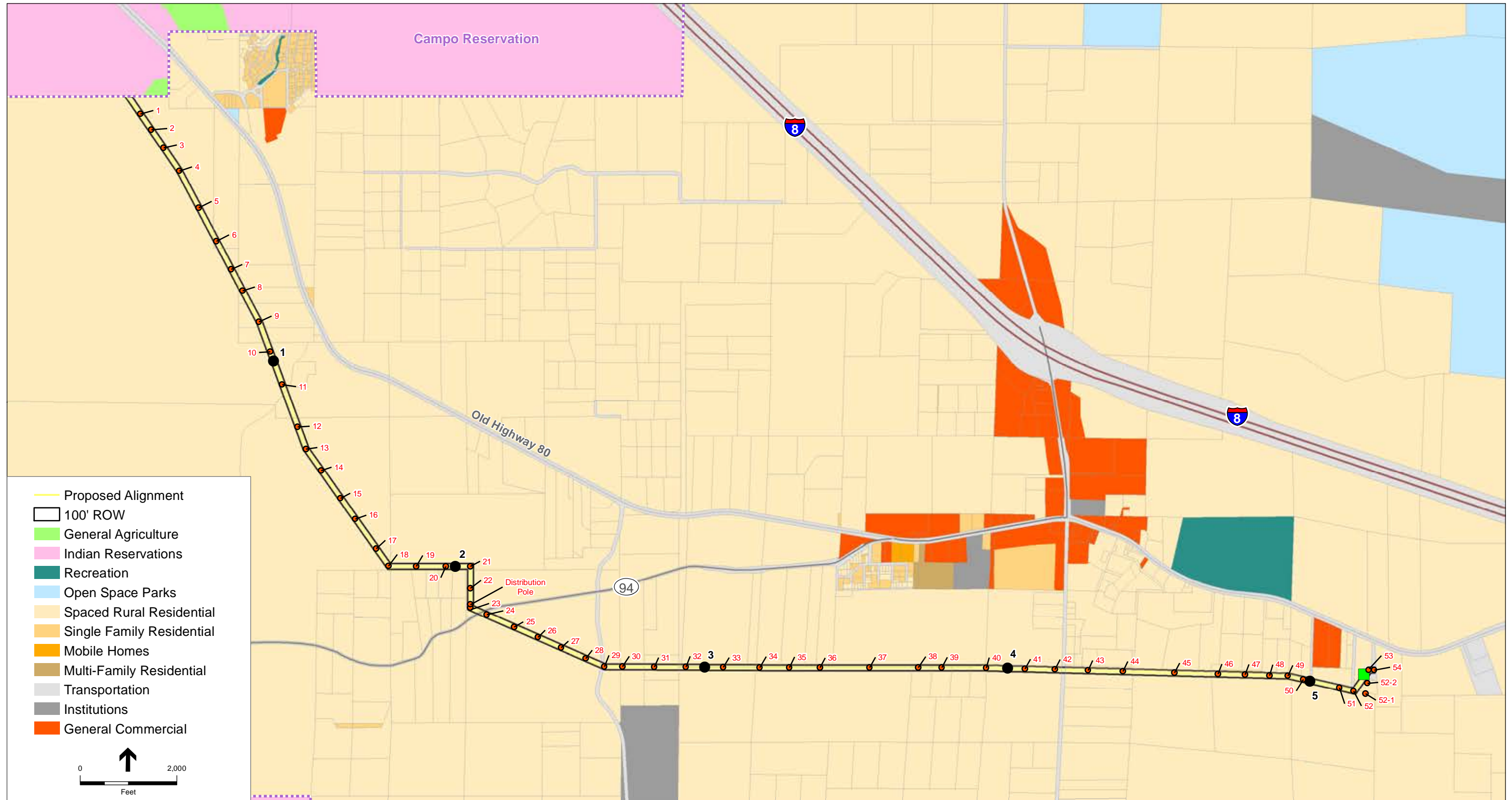
Note: Refer to Figure 4.1-2 for photograph viewpoint location.
 Preliminary, subject to change based upon final engineering.



SOURCE: Sempra Utilities (2011), ESRI (2010), Landiscor Aerial (2010)

SDG&E TL 6931 Fire Hardening / Shu'luuk Wind Interconnect Project . 210582

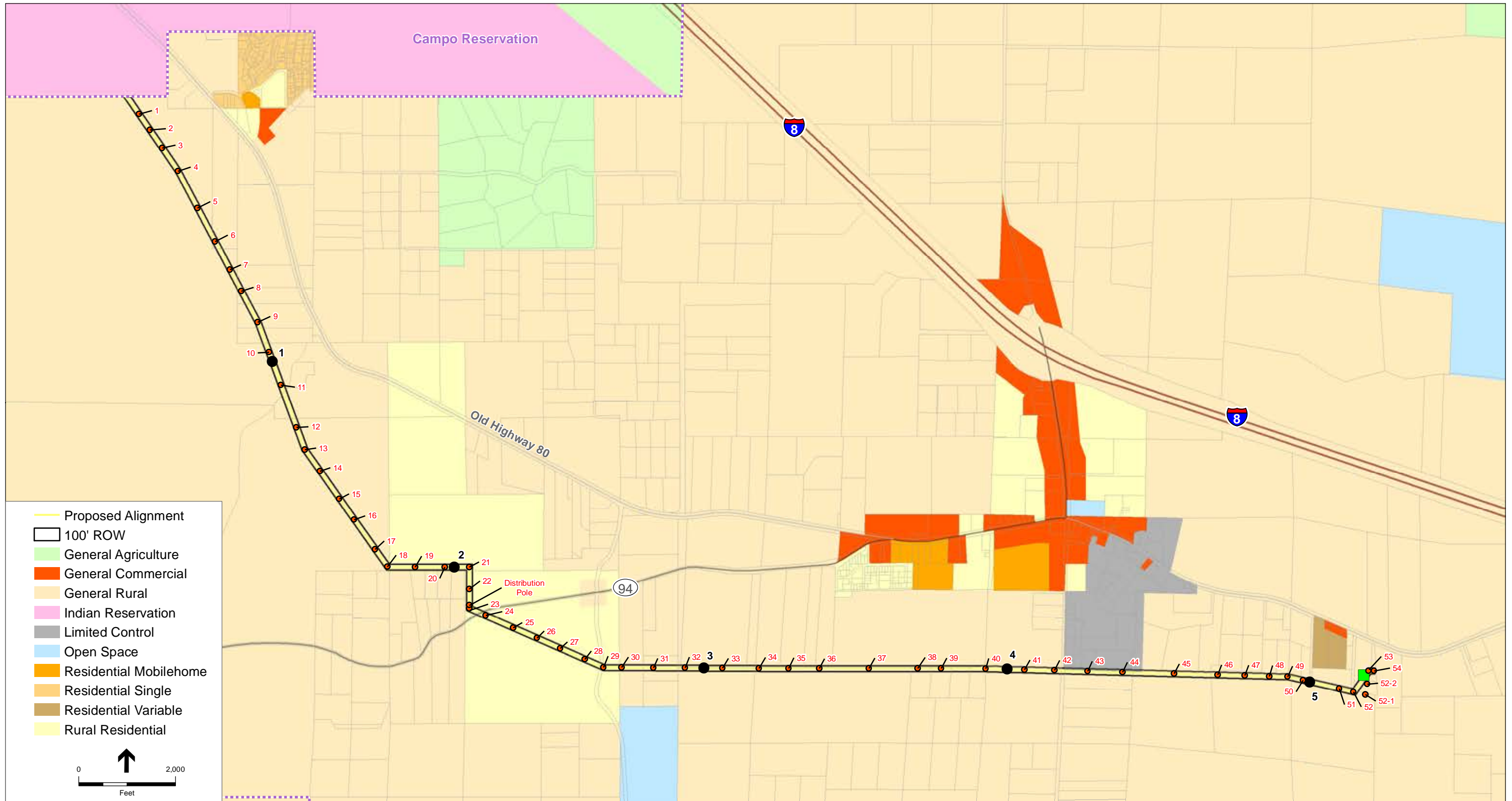
Figure 4.4-13
Critical Habitat Designations



SOURCE: Sempra Utilities (2011), ESRI (2010), LandisCor Aerial (2010)

TL 6931 Fire Hardening / Wind Interconnect Project . 210582

Figure 4.10-1
General Plan Land Use



SOURCE: Sempra Utilities (2011), ESRI (2010), Landiscor Aerial (2010)

TL 6931 Fire Hardening / Wind Interconnect Project . 210582

Figure 4.10-2
Zoning

