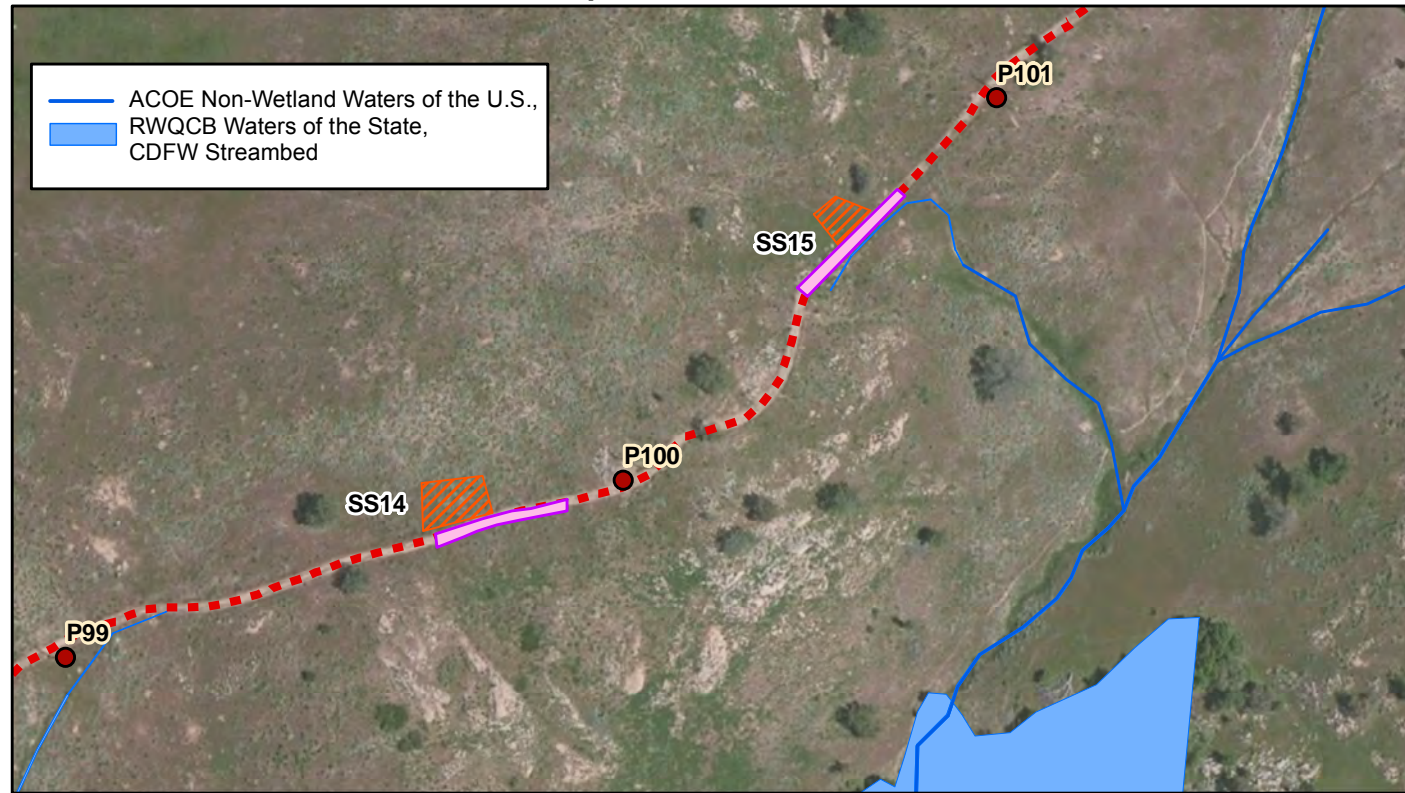


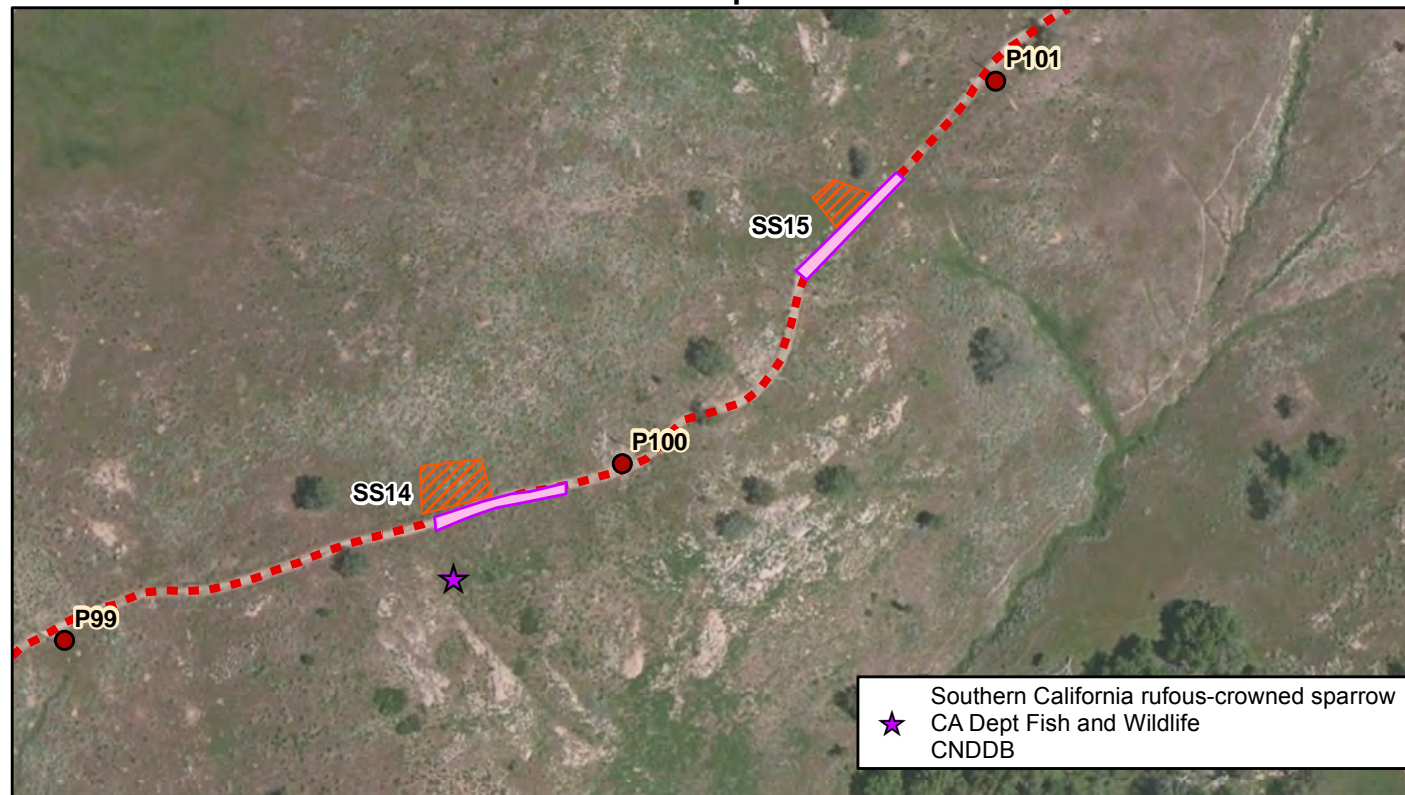
### Aquatic Resources



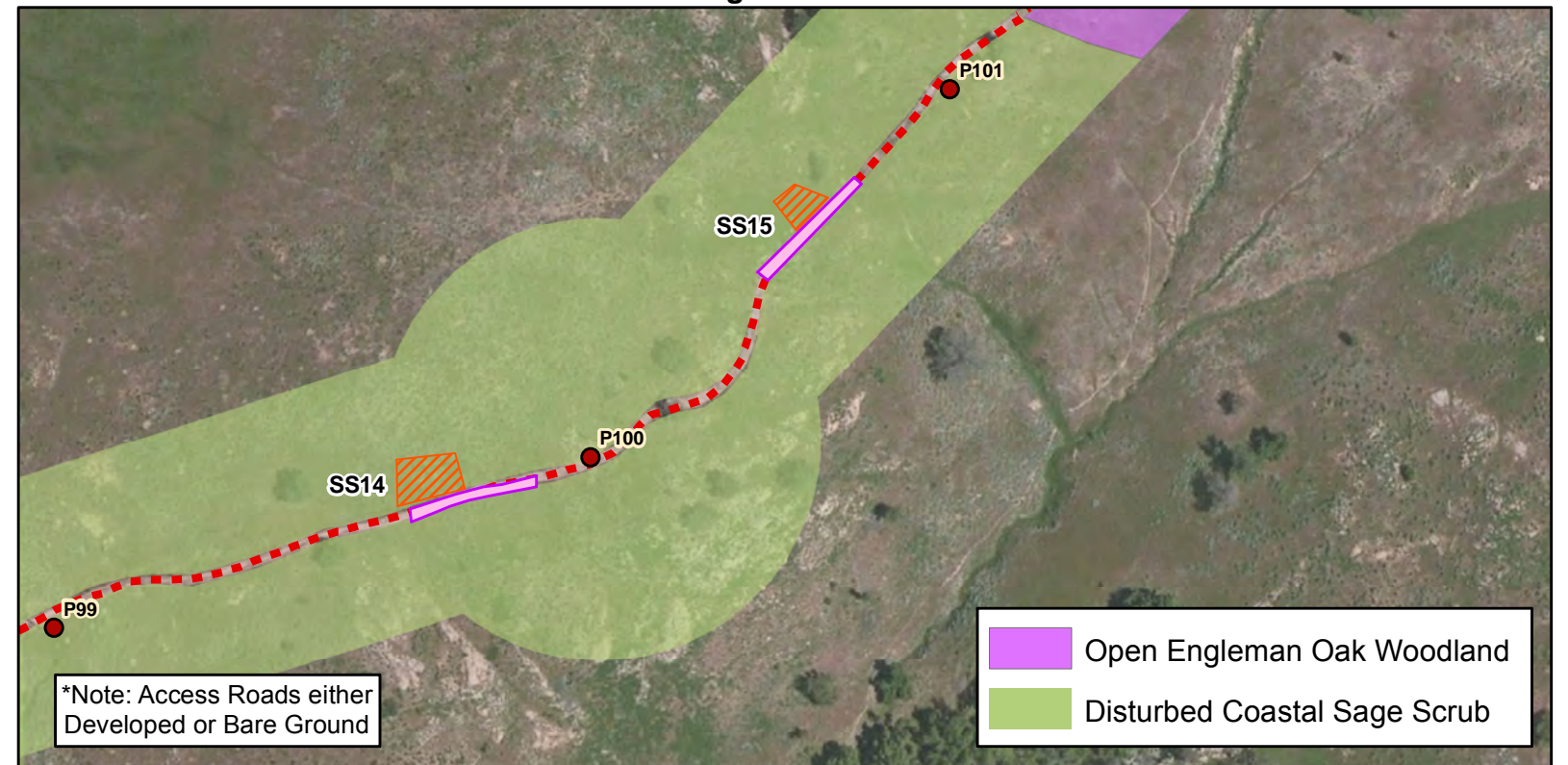
### Cultural Resources



### Sensitive Species



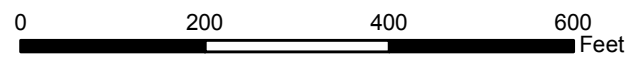
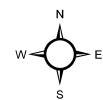
### General Vegetation



Minor Project Refinement Request No. 9 (Stringing Site 14 and Stringing Site 15)

### Attachment A: Resources Maps

Tie-Line 637 Wood-To-Steel Project



- Proposed Pole
- ..... Existing Access Road
- ▨ New Proposed Stringing Site
- ▭ Original Stringing Site

Service Layer Credits: Source: Esri, DigitalGlobe, GeoEye, i-cubed, USDA, USGS, AEX, Getmapping, Aerogrid, IGN, IGP, swisstopo, and the GIS User Community