	<p>California Public Utilities Commission <i>Mitigation Monitoring, Compliance, and Reporting Program</i></p>
	<p>Crown Castle San Mateo County Project</p> <p>Compliance Status Report: 003</p> <p>October 19, 2016</p>

SUMMARY

The California Public Utilities Commission (CPUC) is responsible for overseeing implementation of the mitigation measures set forth in the Final Initial Study and Negative Declaration (IS/ND) for the Crown Castle San Mateo County Project (project). The CPUC has established a third-party monitoring program and adopted a Mitigation Monitoring, Compliance, and Reporting Program (MMCRP) to ensure that measures approved in the Final IS/ND to mitigate or avoid impacts are implemented in the field. This MMCRP status report is intended to provide a description of construction activities for the project, a summary of site inspections conducted by the CPUC’s third-party monitors, the compliance status of applicant proposed measures required by the MMCRP, and anticipated construction activities. This compliance status report covers construction activities from October 2 through October 15, 2016.

MITIGATION MONITORING, COMPLIANCE, AND REPORTING

Site Inspections/Mitigation Monitoring

A CPUC third-party environmental compliance monitor conducted site observations in areas of active construction. Observations were documented using site inspection forms, and applicable applicant proposed measures (APMs) were reviewed in the field.

Implementation Actions

The following summarizes Crown Castle’s implementation of applicable APMs. In addition, Crown Castle has submitted Weekly Compliance Reports, in accordance with the project’s MMCRP.

Aesthetics:

- APM-AES-1: Work area kept orderly, free of trash and debris, disturbed areas returned to pre-project condition.
- APM-AES-2: No conduit installation during reporting period.

- APM-AES-3: Construction lights directed away from the visual field of motorists and pedestrians.

Air Quality:

- APM-AQ-1: Vehicle speeds on unpaved roads limited to 15 mph, publicly visible sign posted.
- APM-AQ-2: Vehicle idling times limited to 5 minutes, vehicles and equipment maintained according to listed requirements, hybrid and flex fuel vehicles used by supervisors, and publicly visible signs posted.

Biological Resources:

- APM-BIO-1: Pre-construction surveys for special status plant species completed, no populations of special status plant species were discovered within the project area.
- APM-BIO-2: Pre-construction surveys for nesting birds and raptors were completed, work began outside of the nesting season, all known nests had fledged prior to the start of work.
- APM-BIO-3: Reporting period outside of late fall and winter months.
- APM-BIO-4: Qualified biological monitor onsite for all ground disturbing activities, worker environmental awareness training conducted for construction crews, holes, trenches, pits, and/or tanks left open overnight are covered/sloped and checked by a qualified biologist prior to construction.

Cultural Resources:

- APM-CUL-1: No cultural resources discovered, compliance actions not triggered.

Greenhouse Gas Emissions:

- APM-GHG-1: Vehicles maintained to standards, hybrid and flex fuel vehicles used by supervisors, and construction materials recycled/reused.

Hazards and Hazardous Materials/Fire Safety:

- APM-HAZ-1: Worker environmental awareness training conducted for construction crews. No hazardous material has been used or observed near the project area during the reporting period.

Hydrology and Water Quality:

- APM-HYD-2: Excavated or disturbed soil kept within a controlled area surrounded by a perimeter barrier. Stockpiles covered/contained to prevent runoff. Excavated soil replaced and disturbed areas restored to pre-construction conditions.

Noise:

- APM-NOI-1: Work conducted within construction-hour limitations and in accordance with construction equipment standards. All equipment utilized sound-control devices no less effective than those provided on original equipment. No traffic control devices that require power have been used during this reporting period.

Traffic:

- APM-TRA-1: Truck trips scheduled outside of peak morning and evening commute; construction materials stored in designated areas. No materials stored at project site. Caltrans-approved traffic control procedures implemented where required.
- APM-TRA-2: Documentation provided prior to start of work, additional compliance actions not triggered.
- APM-TRA-3: Documentation provided prior to start of work, additional compliance actions not triggered.
- APM-TRA-4: All parking limited to right-of-way and pre-approved staging areas.

Utilities and Service Systems:

- APM-USS-1: Materials being recycled/reused, as applicable.

Applicant Proposed Measure Tracking

Applicant proposed measures applicable to the construction activities were verified in the field and documented in the CPUC's tracking database. A complete list of applicant proposed measures is included in the project's MMCRP, as referenced in the Decision for the Crown Castle San Mateo Project, as approved by the CPUC on December 3, 2015 (Decision 15-12-012).

Compliance Status

Pre-construction applicant proposed measures have been completed as indicated in Notice to Proceed (NTP) No. 1 (Attachment B). Applicable applicant proposed measures were verified during site inspections and were determined to be implemented in accordance with the MMCRP.

CONSTRUCTION PROGRESS

Aerial Installation

Initiated on September 6, 2016. Estimated completion date November, 2016.

Anchor/Guy Wire Installation

Initiated on September 6, 2016. Estimated completion date November, 2016.

Underground Installation

Not Started.

Pole Replacement

Not Started.

Traffic Control

Initiated on September 6, 2016. Estimated completion date November, 2016.

CONSTRUCTION SCHEDULE

Crown Castle began construction activities on September 6, 2016. All project activities are scheduled to be completed by November 2016.

ATTACHMENT A Photos

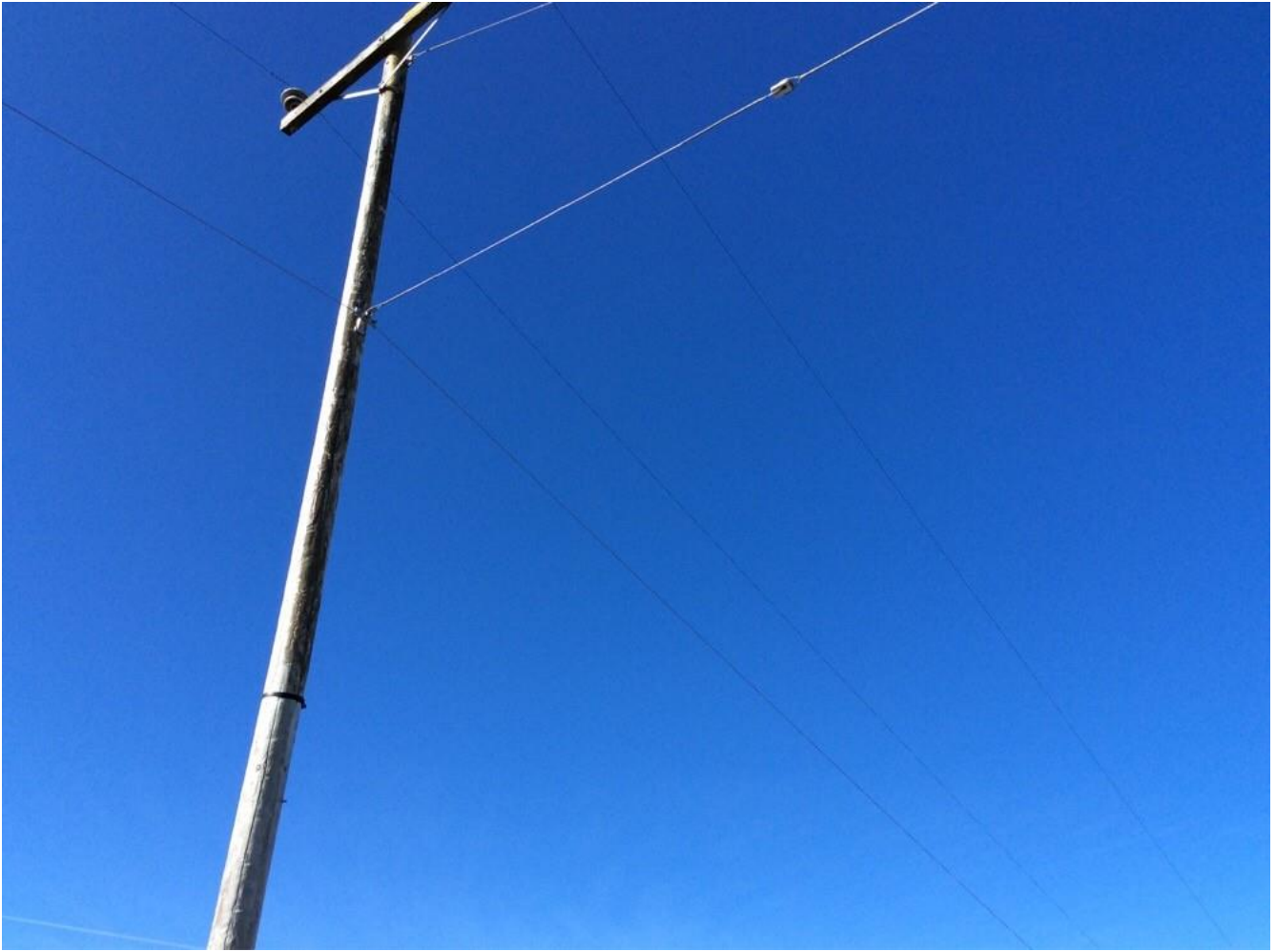


Photo 1: Fiber optic line installed (aerial) on poles.

ATTACHMENT A (Continued)



Photo 2: Crew installing pole guy wire anchors.

ATTACHMENT A (Continued)



Photo 3: Notification sign posted along ROW.

ATTACHMENT A (Continued)



Photo 4: Aerial line installation.

ATTACHMENT A (Continued)



Photo 5: Crew vehicles parked in ROW.

ATTACHMENT A (Continued)



Photo 6: Aerial line installation.

ATTACHMENT B Notices to Proceed

NTP No.	Date Issued	Description	Conditions Included (Y/N)
1	August 24, 2016	All aerial and underground installations and pole replacement	Y

ATTACHMENT C

Minor Project Refinement Request

Minor Project Refinement Request No.	Submitted	Description	Status	Approval
n/a	n/a	n/a	n/a	n/a
-	-	-	-	-