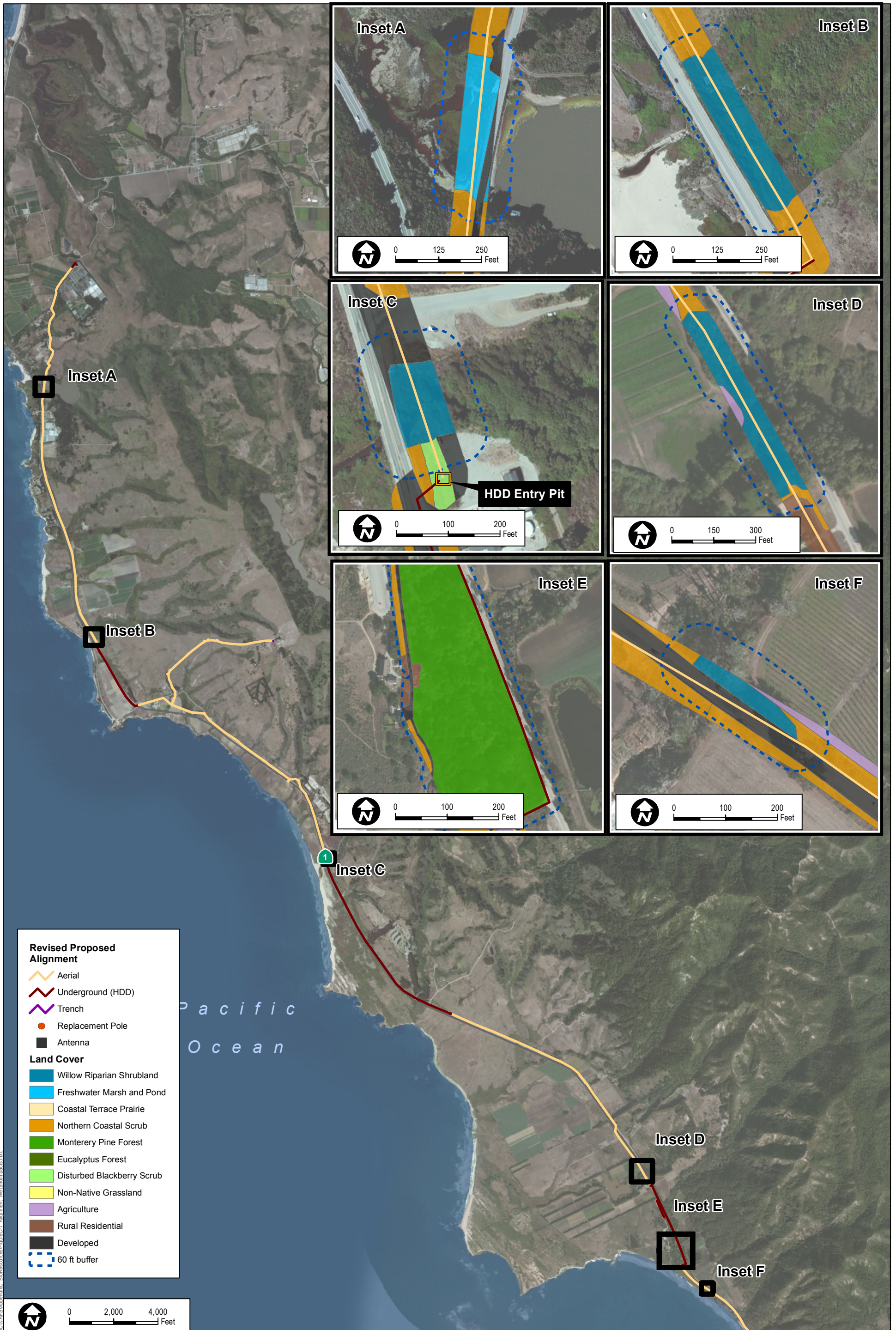
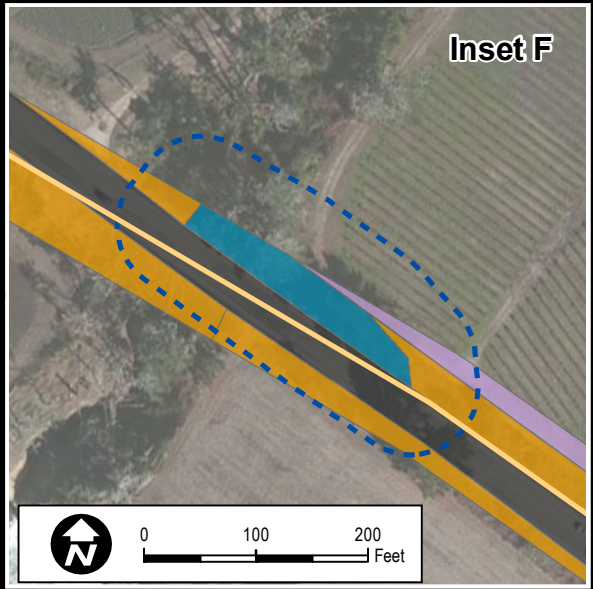
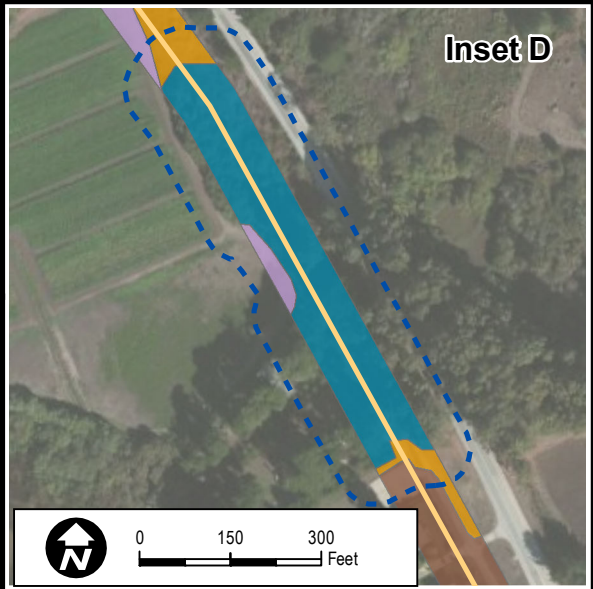
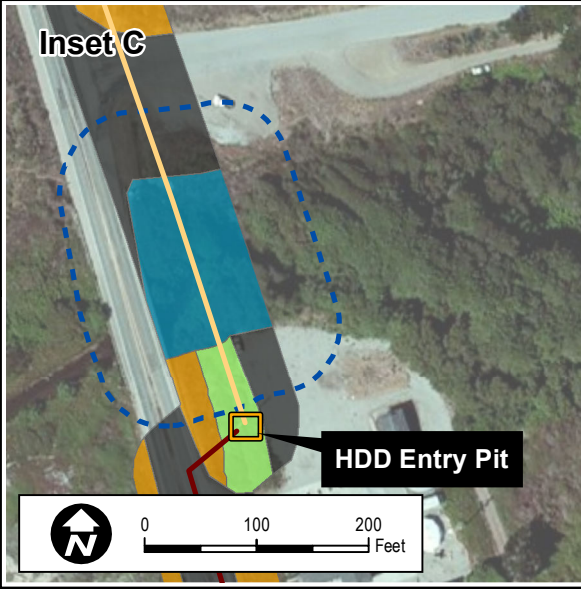
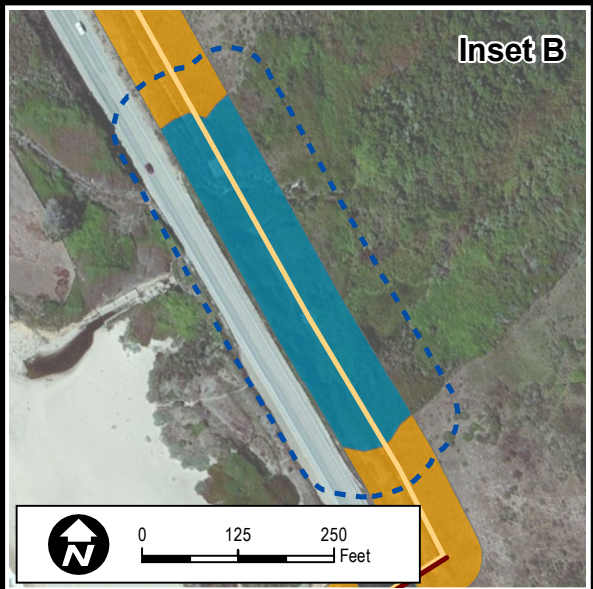
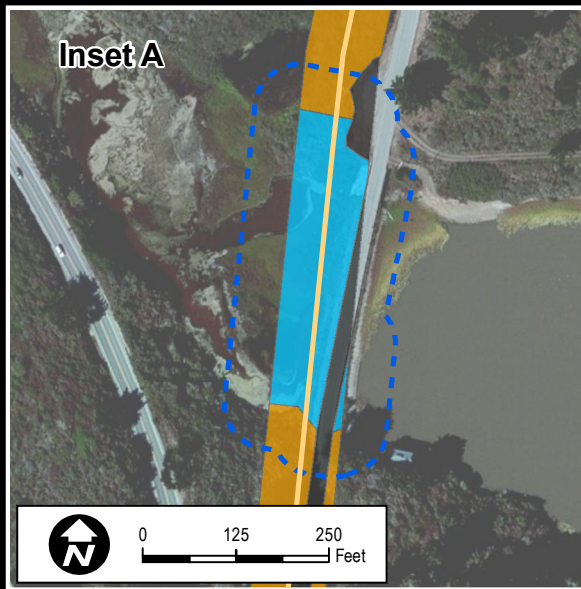
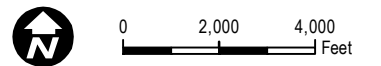


ATTACHMENT C

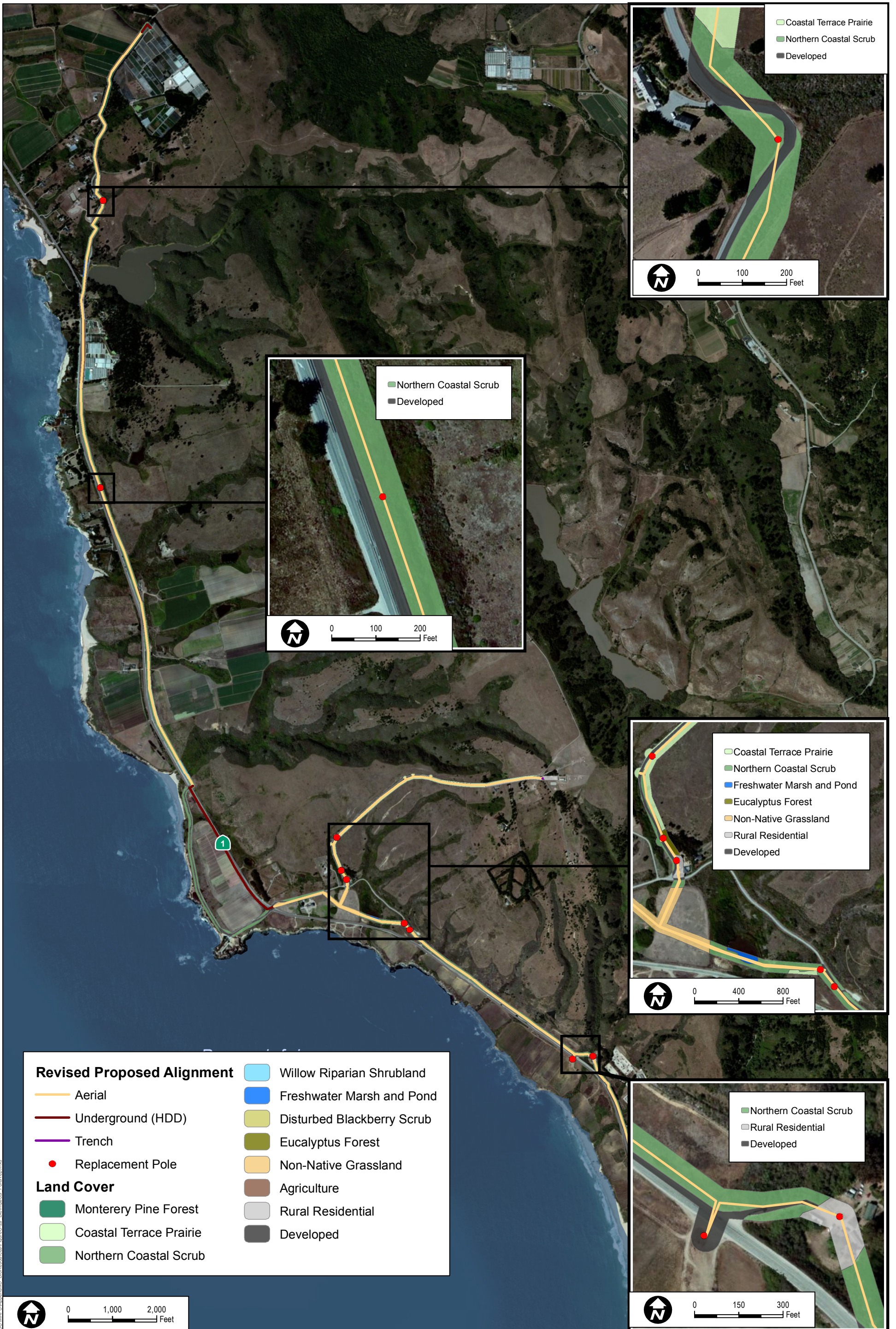
Figures Supporting Response to Comment 4-4



- Revised Proposed Alignment**
- Aerial
 - Underground (HDD)
 - Trench
 - Replacement Pole
 - Antenna
- Land Cover**
- Willow Riparian Shrubland
 - Freshwater Marsh and Pond
 - Coastal Terrace Prairie
 - Northern Coastal Scrub
 - Monterey Pine Forest
 - Eucalyptus Forest
 - Disturbed Blackberry Scrub
 - Non-Native Grassland
 - Agriculture
 - Rural Residential
 - Developed
 - 60 ft buffer



INTENTIONALLY LEFT BLANK



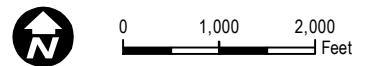
Revised Proposed Alignment

- Aerial
- Underground (HDD)
- Trench
- Replacement Pole

Land Cover

- Monterey Pine Forest
- Coastal Terrace Prairie
- Northern Coastal Scrub

- Willow Riparian Shrubland
- Freshwater Marsh and Pond
- Disturbed Blackberry Scrub
- Eucalyptus Forest
- Non-Native Grassland
- Agriculture
- Rural Residential
- Developed

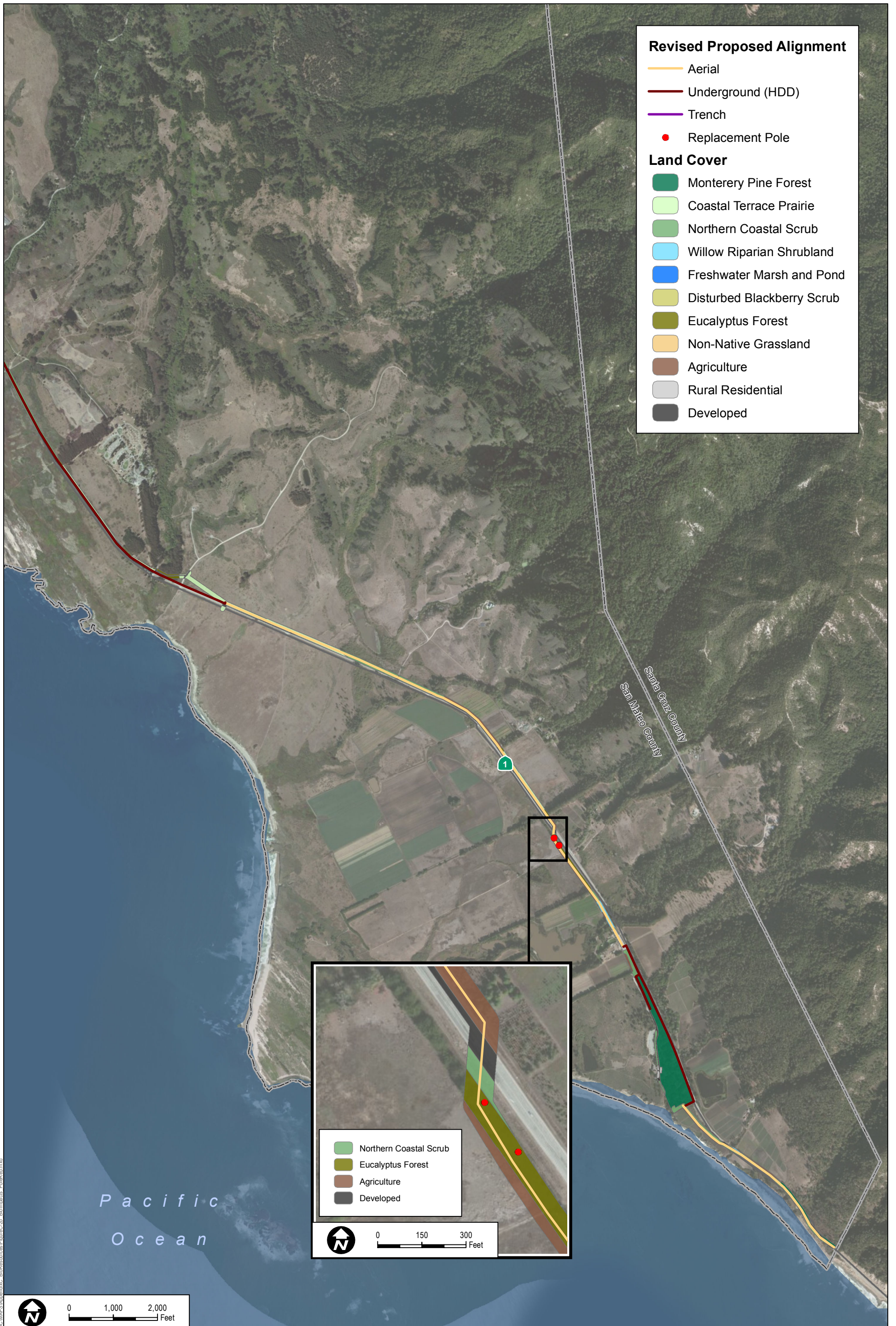


DUDEK

SOURCE: ESRI 2013

FIGURE C-2a
Biological Impacts - Pole Replacements

INTENTIONALLY LEFT BLANK



Path: Z:\Projects\7841\11\MapDocs\MapRS\AppendixC_BioResources\FigureC-2b_BioImpacts_PoleReplacements.mxd

INTENTIONALLY LEFT BLANK