	<p>California Public Utilities Commission <i>Mitigation Monitoring, Compliance, and Reporting Program</i></p>
	<p>East County (ECO) Substation Project</p> <p>Compliance Status Report: 008</p> <p>July 22, 2013</p>

SUMMARY

The California Public Utilities Commission (CPUC) is responsible for overseeing implementation of the mitigation measures set forth in the Final Environmental Impact Report/Environmental Impact Statement (FEIR/EIS) for the East County (ECO) Substation Project. The CPUC has established a third-party monitoring program and adopted a Mitigation Monitoring, Compliance, and Reporting Program (MMCRP) to ensure that measures approved in the FEIR/EIS to mitigate or avoid significant impacts are implemented in the field. This MMCRP status report is intended to provide a description of construction activities on the project, a summary of site inspections conducted by the CPUC’s third-party monitors, the compliance status of mitigation measures required by the MMCRP, and anticipated construction activities. This compliance status report covers construction activities from July 8, to July 21, 2013.

MITIGATION MONITORING, COMPLIANCE, AND REPORTING

Site Inspections/Mitigation Monitoring

A CPUC third-party environmental compliance monitor conducted site observations at the ECO Substation , Jewell Valley Fly Yard and at Carrizo Gorge Construction Yards 1 and 2. Site observations were completed from July 8 through July 12 and from July 15 through July 19. Areas of active and inactive construction within the project limits were observed to verify implementation of the mitigation measures stipulated in the project’s MMCRP. Daily observations were documented on daily site inspection forms and applicable mitigation measures were reviewed in the field.

Implementation Actions

ECO Substation

Constructions crews continued earthwork activities at the ECO Substation site during this reporting period (see Photo 1 –Attachment A). In accordance with Mitigation Measures CUL-1A and CUL-1D, Environmentally sensitive areas (ESAs) have been clearly identified in the field via use of signage and

flagging material (see Photo 2 – Attachment A). Archeological and Biological monitors were present monitoring all earthwork activities..

In accordance with Mitigation Measure HAZ-5a and the Spill Prevention Control and Countermeasure Plan, stained soils were observed being removed by construction crews via use of spill kits stored on-site (see Photo 3 – Attachment A). Contaminated soils and materials were placed in the appropriate storage bins and labeled (Photo 4 – Attachment A).

Water haul trucks were observed delivering water to the temporary retention basin, where water is being stored for use by water trucks and water pulls during grading activities. Crews were observed utilizing water to minimize fugitive dust emissions in accordance with Mitigation Measure AQ-1 (see Photo 5 – Attachment A).

Jewel Valley Fly Yard

SDG&E continued clearing and grubbing activities at the Jewel Valley Fly Yard during this reporting period. The Jewel Valley Fly Yard will be utilized for the staging and storage of materials including but not limited to storage of construction equipment, temporary construction trailers field and for helicopter operations, maintenance, storage, and refueling. Fencing was installed around the fly yard in order to clearly designate the work limits. Biological monitors ensured that the construction of the fence occurred within approved work limits as required by Mitigation Measure BIO-1A (see Photo 6 – Attachment A).

Carrizo Gorge Fly Yard

In accordance with the approved Minor Project Refinement Request 003, SDG&E began to clear and grub Carrizo Gorge Fly Yards 1 and 2. Construction activities observed during this reporting period consisted of clearing vegetation. Fencing was also installed along the perimeter of Carrizo Gorge Construction Yards 1 and 2 to prevent unauthorized access. Native American and Archeological monitors were on site during all fencing activities as is required by Mitigation Measure CUL-1D (see Photo 7 – Attachment A). BMP's consisting of straw wattles and silt fencing was installed at the Carrizon Gorge Fly Yard in accordance with Mitigation Measure HYD-4 (see Photo 8- Attachment A).

Mitigation Measure Tracking

Mitigation measures applicable to the construction activities were verified in the field and documented in the CPUC's mitigation measure tracking database. A complete list of mitigation measures and applicant proposed measures is included in the FEIR/FEIS for the ECO Substation Project, as adopted by the CPUC on April 19, 2012 (Decision 12-04-022).

Compliance

Pre-construction mitigation measures have been completed as indicated in CPUC NTP No. 001, No. 002, No. 003, No. 004, No. 005, No.006 and BLM NTP No. 001 (see Attachment B). Applicable mitigation measures were verified during site inspections and were determined to be implemented in accordance with the MMCRP.

CONSTRUCTION PROGRESS

Abatement Activities at the Boulevard Substation Rebuild Site

All abatement activities at the Boulevard Substation Rebuild Site as authorized by CPUC NTP No. 001 have been completed.

ECO Substation Site Construction

SDG&E began clearing, grubbing, and grading activities associated with the ECO Substation site on March 11, 2013 and completed site clearing activities on March 29.

Geotechnical Investigations

All geotechnical investigations authorized by CPUC NTP No. 003, No. 004, and BLM NTP No. 001 to conduct 24 geotechnical borings were completed as of March 14, 2013.

CONSTRUCTION SCHEDULE

ECO Substation 500 kV and 230/138 kV Yards – SDG&E began construction activities on March 11, 2013 and is anticipated to complete construction in April 2014.

SWPL Loop-In – SDG&E has not initiated any construction activities at this time associated with the SWPL Loop-In.

138 kV Transmission Line – SDG&E has not initiated any construction activities at this time associated with the 138 kV Transmission Line.

Boulevard Substation Rebuild – SDG&E began abatement activities on December 31, 2012 and is anticipated to complete construction in June 2014.

ATTACHMENT A

Photos



Photo 1: Biological monitors ensured that all construction activities remain within the approved work limits in accordance with Mitigation Measure BIO-1A

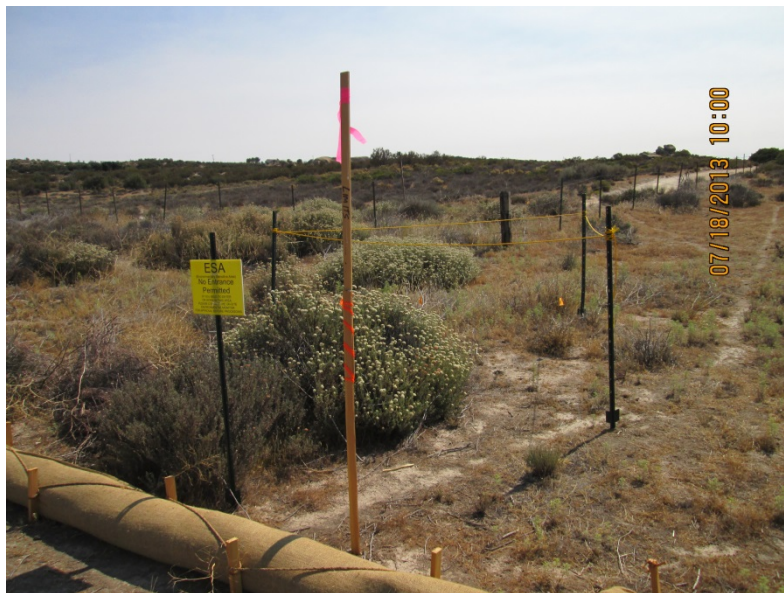


Photo 2: Environmentally sensitive areas (ESAs) clearly delineated in accordance with Mitigation Measures CUL-1A and CUL-1D.

ATTACHMENT A (Continued)



Photo 3: Construction crews remove stained soil in accordance with Mitigation Measure HAZ-5a and the Spill Prevention Control and Countermeasure Plan.



Photo 4: In accordance with Mitigation Measure HAZ-5a, waste is properly disposed of in a labeled container.

ATTACHMENT A (Continued)



Photo 5: Water being utilized for dust control during earthwork activities in accordance with Mitigation Measure AQ-1



Photo 6: A biological monitor oversees construction activities associated with fence installation in accordance with Mitigation Measure BIO-1a.

ATTACHMENT A (Continued)



Photo 7: Native American and archaeological monitors present during fence installation at the Carrizo Gorge Yard #1 in accordance with Mitigation Measure CUL-1D.



Photo 8: BMP's consisting of straw wattles and silt fencing are installed along the Southern Access Road in accordance with the SWPPP and Mitigation Measure HYD-4.

ATTACHMENT B Notices to Proceed

NTP No.	Date Issued	Description	Conditions Included (Y/N)
CPUC - 001	November 30, 2012	Abatement activities at the Boulevard Substation rebuild site.	Y
CPUC - 002	February 1, 2013	Construction of a new substation (a 500-kilovolt (kV) yard and a 230/138 kV yard) and rebuilding and paving of an existing access road to provide main access to the substation.	Y
CPUC - 003	February 1, 2013	Twenty-two geotechnical borings to finalize the design of the underground transmission alignments on private lands.	Y
CPUC - 004	March 4, 2013	A single geotechnical boring to finalize the design of the underground transmission alignments on private lands.	Y
CPUC - 005	May 21, 2013	To begin use of the Domingo Lake Construction Yard, Jewel Valley Construction Yard, Carrizo Gorge Construction Yard 1, and Carrizo Gorge Construction Yard 2 in order to begin staging, assembling, and storing equipment and materials.	Y
BLM - 001	February 11, 2013	A single geotechnical boring to finalize the design of the underground transmission alignments on lands administered by the BLM.	Y

ATTACHMENT C

Minor Project Refinement Requests

Minor Project Refinement Request No.	Submitted	Description	Status	Approval
001	January 25, 2013	The addition of a temporary, polyvinyl chloride (PVC)-lined retention basin with the 500 kV yard to be used for water storage during initial mass grading activities.	Approved	February 7, 2013
002	March 22, 2013	Adjustments to the Domingo Lake and Jewel Valley Construction Yards including: <u>Domingo Lake Construction Yard</u> <ul style="list-style-type: none"> • Shift of approximately 550 feet to the northwest <u>Jewel Valley Construction Yard</u> <ul style="list-style-type: none"> • Addition of a new temporary access road • Addition of a temporary 12 kV distribution service line extension (distribution tap) • Additional grading activities at the intersection of Jewel Valley Road and the existing access road located north of the Jewel Valley Construction Yard 	Approved	May 20, 2013
003	March 22, 2013	To use Carrizo Gorge Construction Yard 2 for general construction activities, such as staging and storage of materials in addition to helicopter takeoffs, landings, and refueling as approved in the Project's Final EIR/EIS.	Approved	May 20, 2013
004	May 17, 2013	Adjustments to the Southern Access Road	Pending	Pending