

# PREDECISIONAL WORKING DRAFT

## SDG&E EAST COUNTY SUBSTATION (ECO) PROJECT COMPONENTS

- Proposed SWPL Loop-In
- Proposed 138 kV Transmission Line
- Proposed 12 kV Temporary Distribution Tap
- Existing Transmission Line
- ▲ Existing Boulevard Substation
- Proposed 138 kV Line Milepost
- ⊕ Proposed White Star Communication Facility Rebuild

- Proposed ECO Substation
- Proposed Boulevard Substation Rebuild

## CONNECTED ACTIONS Pacific Wind Development (Iberdrola) Tule Wind Project Components

- Proposed Wind Turbines
- Overhead Cable Collection System
- 34.5 kV Overhead Cable Collection Structures
- Underground Cable Collection System
- Operation and Maintenance Station
- Preferred 138 kV Gen-Tie Line
- Alternate 138 kV Gen-Tie Line
- Proposed 138 kV Transmission Line Structures
- Access Roads
- Staging Areas

## Energia Sierra Juarez U.S. (ESJ U.S.)

- ESJ U.S. 500kV Route
- ESJ U.S. 230kV Route

## Energia Sierra Juarez Wind (ESJ Wind Phase I)

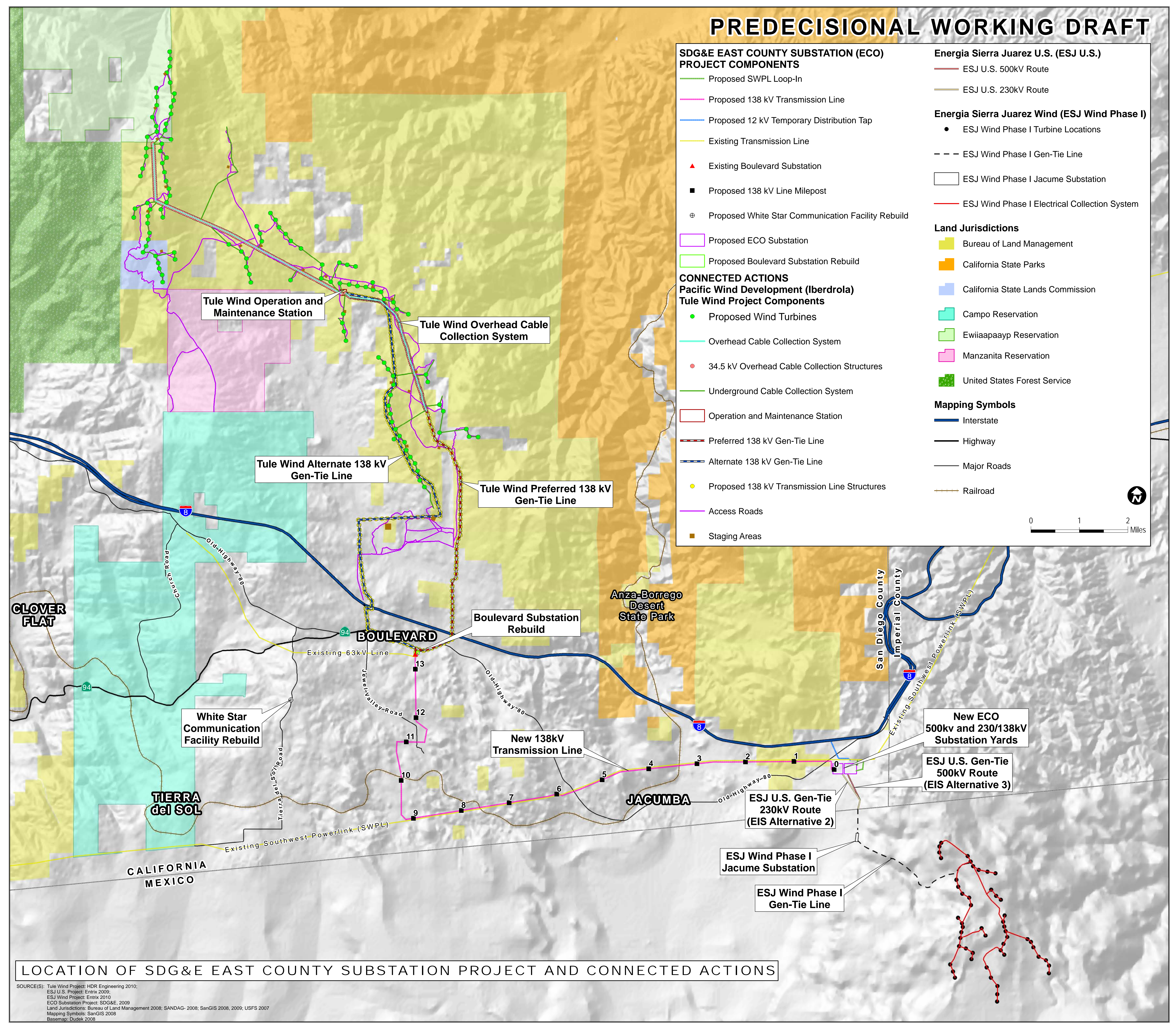
- ESJ Wind Phase I Turbine Locations
- ESJ Wind Phase I Gen-Tie Line
- ESJ Wind Phase I Jacume Substation
- ESJ Wind Phase I Electrical Collection System

## Land Jurisdictions

- Bureau of Land Management
- California State Parks
- California State Lands Commission
- Campo Reservation
- Ewiiapaayp Reservation
- Manzanita Reservation
- United States Forest Service

## Mapping Symbols

- Interstate
- Highway
- Major Roads
- Railroad



LOCATION OF SDG&E EAST COUNTY SUBSTATION PROJECT AND CONNECTED ACTIONS

SOURCE(S): Tule Wind Project: HDR Engineering 2010; ESJ U.S. Project: Entrix 2009; ESJ Wind Project: Entrix 2010; ECO Substation Project: SDG&E, 2009; Land Jurisdictions: Bureau of Land Management 2008; SANDAG- 2008; SanGIS 2008, 2009; USFS 2007; Mapping Symbols: SanGIS 2008; Basemap: Dukek 2008