

San Diego Gas and Electric Company's
Proponent's Environmental Assessment for the East County Substation Project
Revisions Due to Changes in Critical Habitat

San Diego Gas and Electric Company (SDG&E) filed a Proponent's Environmental Assessment (PEA) for the East County (ECO) Substation Project with the California Public Utilities Commission on August 10, 2009. Just prior to filing, the boundaries of the United States (U.S.) Fish and Wildlife Service (USFWS)-designated critical habitat for the Quino checkerspot butterfly (*Euphydryas editha quino*) and Peninsular bighorn sheep (*Ovis canadensis nelsoni*) changed; however, these changes were not reflected in the PEA. This letter provides an update to the ECO Substation Project PEA to reflect these changes.

Quino Checkerspot Butterfly (QCB)

On June 17, 2009, the USFWS reduced the size of the QCB critical habitat from 171,605 acres to 62,125 acres. The area designated as the Jacumba Critical Habitat Unit, which the proposed 138 kilovolt (kV) transmission line crosses, was revised. A new map depicting the revised area designated as critical habitat for the QCB is attached and is intended to replace Figure 4.4-1 Critical Habitat Map within Section 4.4: Biological Resource of the PEA.

Several places throughout Section 4.4: Biological Resources state that approximately 3.6 miles of the proposed 138 kV transmission line, from approximate milepost (MP) 3.5 to MP 7.1, crosses QCB critical habitat. In light of the changes to the QCB critical habitat designation area, this should now state that approximately 1.5 miles of the proposed 138 kV transmission line, from MP 4.1 to MP 5.6, cross QCB critical habitat. The following sections of Section 4.4: Biological Resources require updating to reflect this information:

- Page 4.4-21, Table 4.4-1: Sensitive Species with the Potential to Occur
- Page 4.4-28, under Sensitive Wildlife Species, Quino Checkerspot Butterfly
- Page 4.4-34, third paragraph
- Page 4.4-42, under Sensitive Invertebrates Species

Due to the change in the amount of habitat crossed, the impact to QCB critical habitat, as described on Page 4.4-42 under Sensitive Invertebrate Species, have also been reduced from 4.65 acres (temporary and permanent) to 1.50 acres (temporary and permanent). This consists of a temporary impact of 0.95 acre (as opposed to 2.96 acres) and a permanent impact of 0.55 acre (as opposed to 1.69 acres).

Peninsular Bighorn Sheep (PBS)

On April 14, 2009, the USFWS reduced the size of the PBS critical habitat from 844,897 acres to 376,938 acres. The portion of the PBS critical habitat east of the proposed ECO Substation was revised. A map depicting the new critical habitat for the PBS is attached

and is intended to replace Figure 4.4-1 Critical Habitat Map within Section 4.4: Biological Resource of the PEA.

Several places throughout Section 4.4: Biological Resources state that PBS critical habitat is located approximately 600 feet east of the proposed ECO Substation site. In light of the changes to PBS critical habitat, this should now state that PBS critical habitat is located approximately 2 miles northeast of the proposed ECO Substation site. The following sections of Section 4.4: Biological Resources require updating with this distance change:

- Page 4.4-24, Table 4.4-1: Sensitive Species with the Potential to Occur
- Page 4.4-32: under Peninsular Bighorn Sheep
- Page 4.4-33, second paragraph
- Page 4.4-34, third paragraph
- Page 4.4-39, under Sensitive Mammal Species

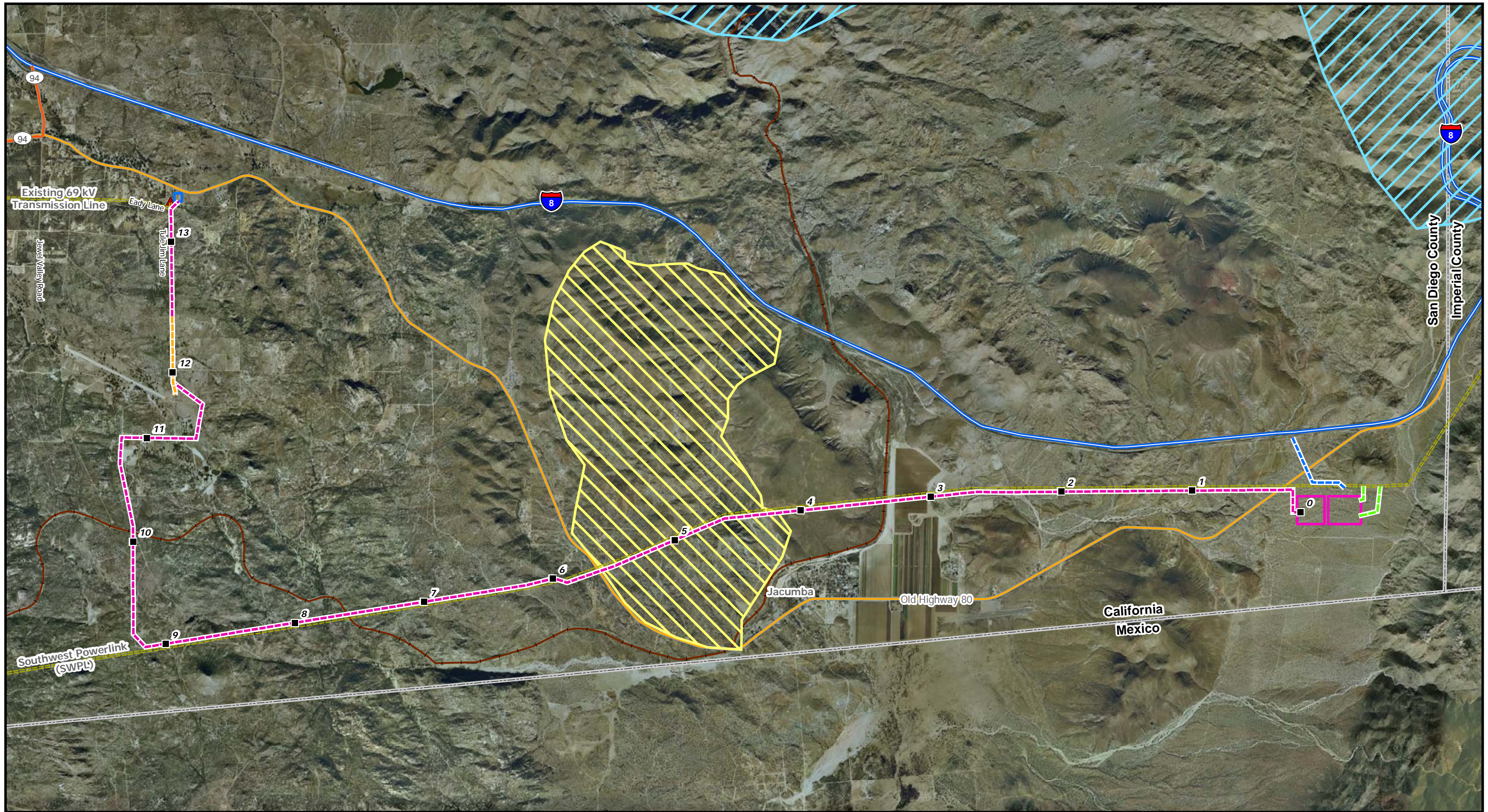


Figure 4.4-1: Critical Habitat Map (Revised December 2009)

East County Substation Project

