

PROPONENT’S ENVIRONMENTAL ASSESSMENT – ZAYO PRINEVILLE-TO-RENO FIBER OPTIC PROJECT

Public Services

5.15 PUBLIC SERVICES

This section describes existing conditions and potential impacts on public services as a result of construction, operation, and maintenance of the project. The analysis concludes that impacts would be less than significant.

5.15.1 Environmental Setting

Public service providers include police protection, fire protection, and maintenance of public facilities such as schools and parks. Public service facilities, including police and fire stations, schools, parks, and hospitals within 1 mile of the project, are identified in Figure 5.15-1.

5.15.1.1 Service Providers

Police

Police protection within the project area is provided by the Modoc County Sheriff’s Office, Lassen County Sheriff’s Office, Sierra County Sheriff-Coroner Department, and Alturas Police Department. Police stations within 1 mile of the project are identified in Table 5.15-1. In Lassen County, the average response time in 2019 was 24 minutes and 17 seconds for dispatch and response (Lassen County Sherriff’s Office 2020). Response times for the police services in the project area are unavailable for Sierra County, Modoc County, and Alturas.

Table 5.15-1: Police Facilities within 1 Mile of the Project

Name	County	Distance from Project (miles)
Modoc County Criminal & Civil Sheriff's Department	Modoc County	0.01
Modoc County Sheriff	Modoc County	0.07
Alturas Police Department	Modoc County	0.11
California Highway Patrol	Modoc County	0.50

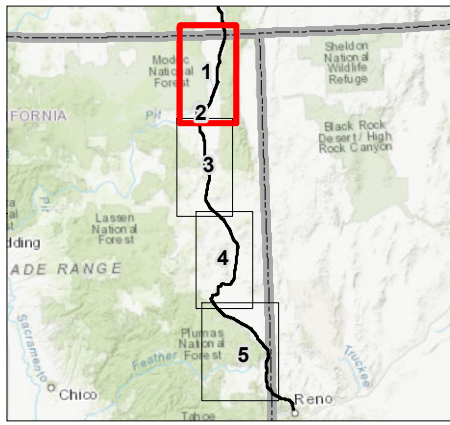
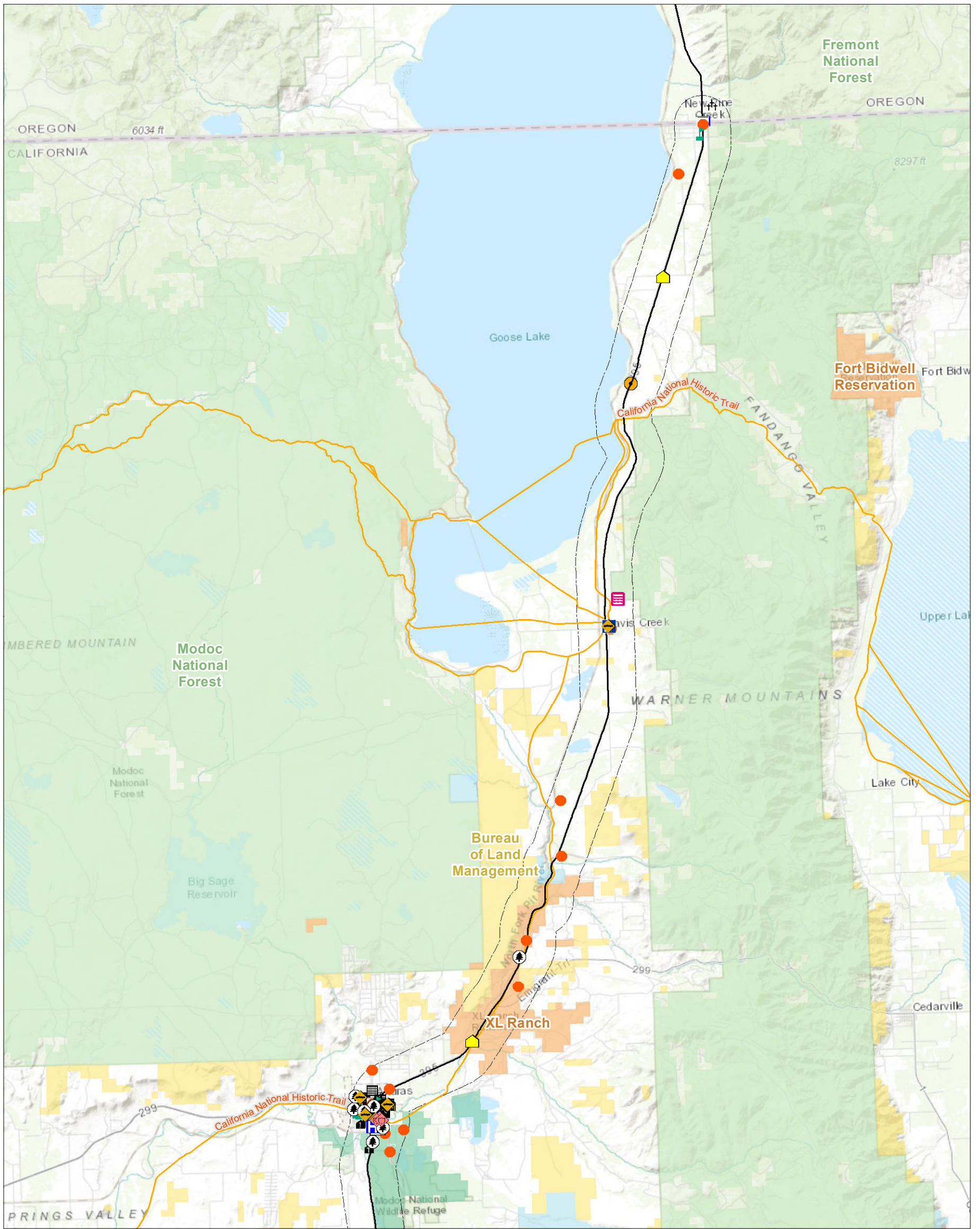


PROPONENT'S ENVIRONMENTAL ASSESSMENT – ZAYO PRINEVILLE-TO-RENO FIBER OPTIC PROJECT

Public Services

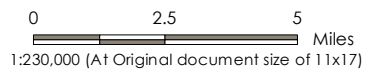
This page intentionally left blank.





Notes
 1. Coordinate System: NAD 1983 UTM Zone 10N
 2. Data source: Esri 2020; USGS 2020; BLM 2020
 3. Service Layer Credits: Sources: Esri, HERE, Garmin, Intermap, increment P Corp., GEBCO, USGS, FAO, NPS, NRCAN, GeoBase, IGN, Kadaster NL, Ordnance Survey, Esri Japan, METI, Esri China (Hong Kong), (c) OpenStreetMap contributors, and the GIS User Community

- | | |
|--|--|
| <ul style="list-style-type: none"> Police Station Fire Station Public Building Populated Place Church Hospital Lake Post Office School Park Goose Lake View Point California National Historic Trail Alignment 1-mile Buffer | <p>Land Ownership</p> <ul style="list-style-type: none"> Bureau of Indian Affairs (BIA) Bureau of Land Management (BLM) US Fish and Wildlife (USFW) US Forest Service (USFS) State Local Private or Unknown |
|--|--|

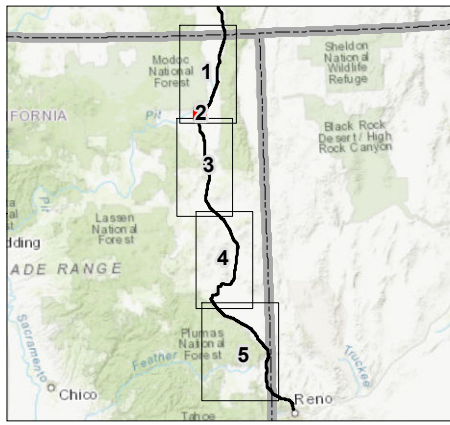
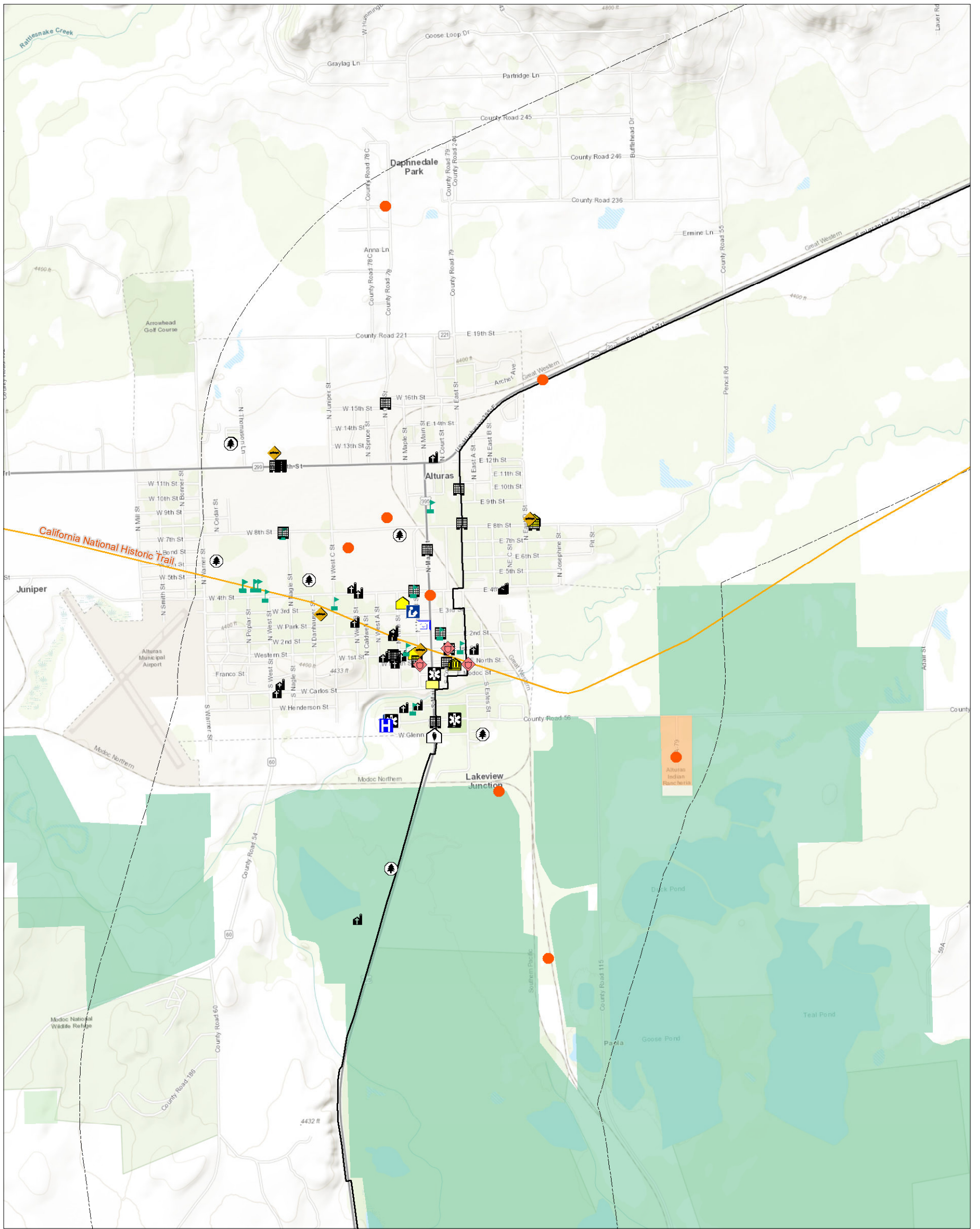


Project Location: Prineville, OR to Reno, NV
 22720011
 Prepared by JC on 2020-05-19
 Technical Review by DA on 2020-05-19
 Independent Review by CS on 2020-05-19

Client/Project: Zayo
 Fiber Optic Line--Prineville to Reno
 June 2020

Figure No. **5.15-1** Page 1 of 5

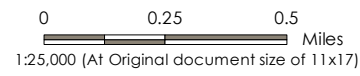
Public Services within One Mile of Proposed Prineville to Reno Fiber Optic Line



Notes
 1. Coordinate System: NAD 1983 UTM Zone 10N
 2. Data source: Esri 2020; USGS 2020; BLM 2020
 3. Service Layer Credits: Sources: Esri, HERE, Garmin, Intermap, increment P Corp., GEBCO, USGS, FAO, NPS, NRCAN, GeoBase, IGN, Kadaster NL, Ordnance Survey, Esri Japan, METI, Esri China (Hong Kong), (c) OpenStreetMap contributors, and the GIS User Community

- Police Station
- Fire Station
- Public Building
- Populated Place
- Church
- Hospital
- Post Office
- School
- Park
- California National Historic Trail
- Alignment
- 1-mile Buffer

- Land Ownership**
- Bureau of Indian Affairs (BIA)
 - US Fish and Wildlife (USFW)
 - US Forest Service (USFS)

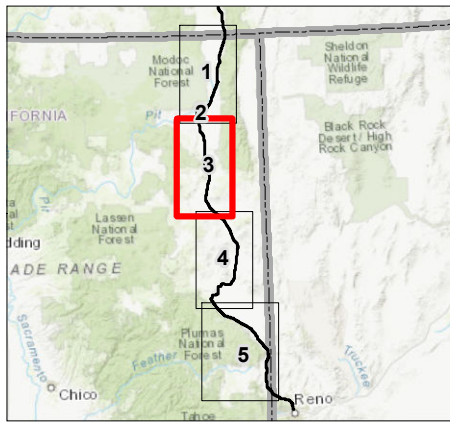
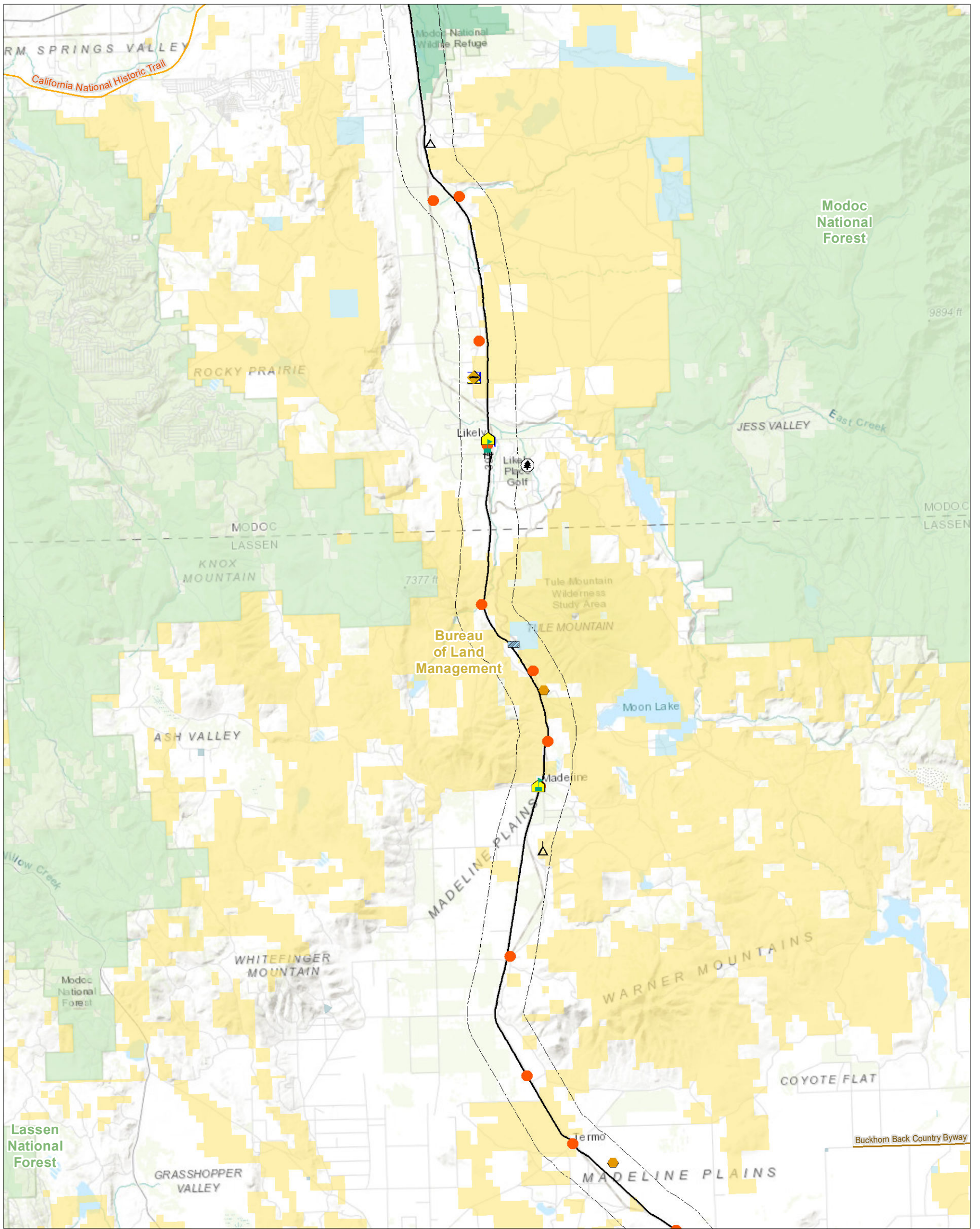


Project Location: Prineville, OR to Reno, NV
 22720011
 Prepared by JC on 2020-05-19
 Technical Review by DA on 2020-05-19
 Independent Review by CS on 2020-05-19

Client/Project: Zayo
 Fiber Optic Line--Prineville to Reno
 June 2020

Figure No. **5.15-1** Page 2 of 5

Public Services within One Mile of Proposed Prineville to Reno Fiber Optic Line



Notes
 1. Coordinate System: NAD 1983 UTM Zone 10N
 2. Data source: Esri 2020; USGS 2020; BLM 2020
 3. Service Layer Credits: Sources: Esri, HERE, Garmin, Intermap, increment P Corp., GEBCO, USGS, FAO, NPS, NRCAN, GeoBase, IGN, Kadaster NL, Ordnance Survey, Esri Japan, METI, Esri China (Hong Kong), (c) OpenStreetMap contributors, and the GIS User Community

- Fire Station
- Public Building
- Cemetery
- Populated Place
- Post Office
- Range
- Reservoir
- School
- Summit
- Park
- California National Historic Trail
- Recreational Trails and Byways
- Alignment
- 1-mile Buffer

- Land Ownership**
- Bureau of Indian Affairs (BIA)
 - Bureau of Land Management (BLM)
 - US Fish and Wildlife (USFW)
 - US Forest Service (USFS)
 - State
 - Local
 - Private or Unknown

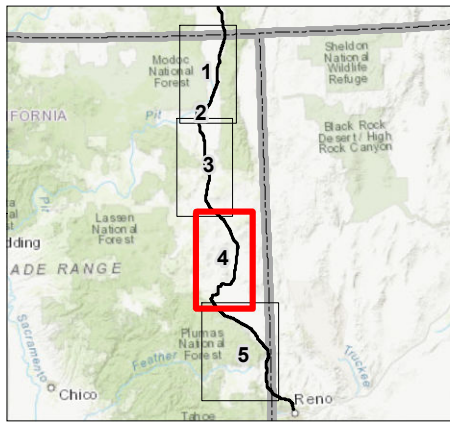
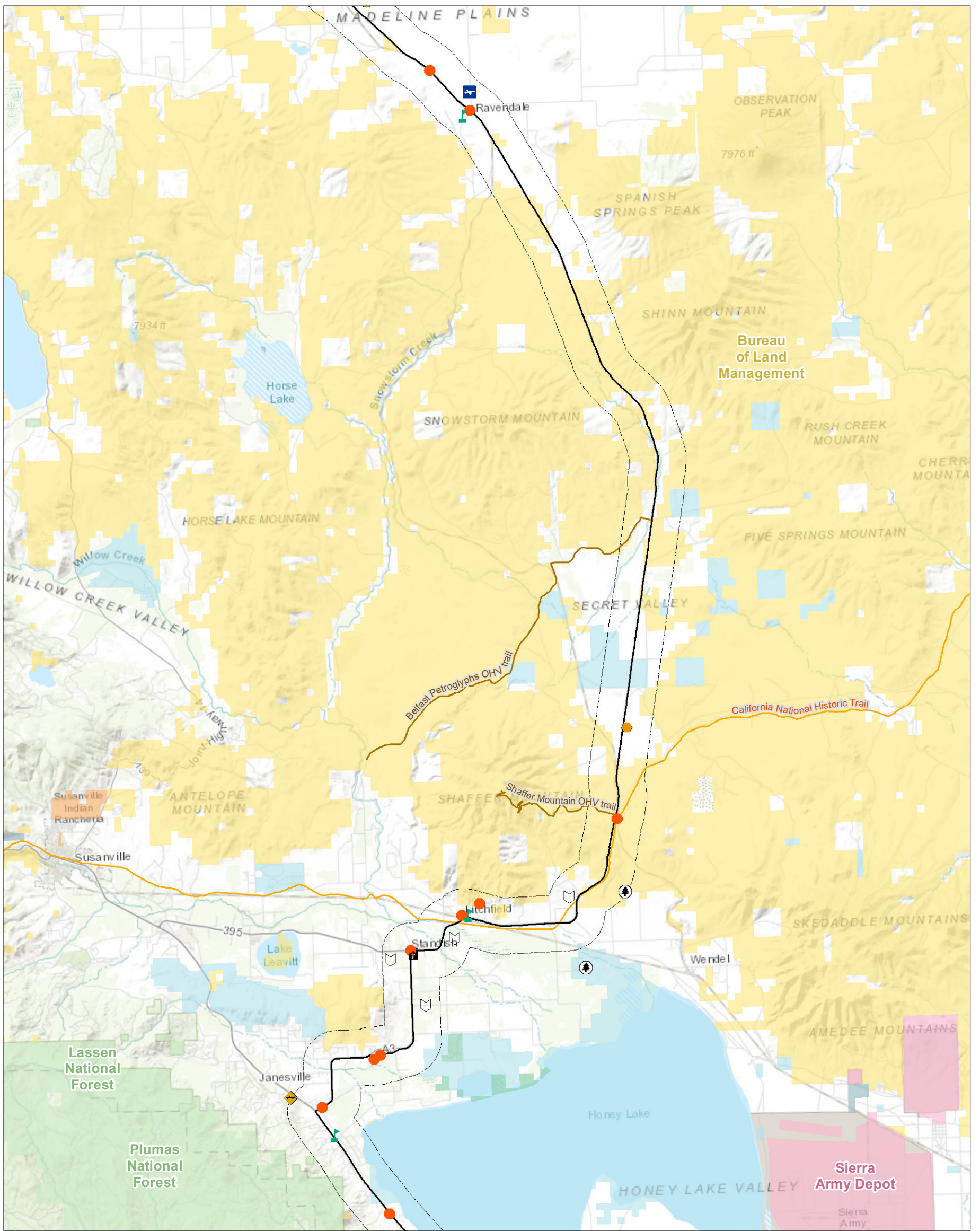
0 2.5 5 Miles
 1:230,000 (At Original document size of 11x17)



Project Location: Prineville, OR to Reno, NV
 Client/Project: Zayo Fiber Optic Line--Prineville to Reno June 2020
 Prepared by: JC on 2020-05-19
 Technical Review by: DA on 2020-05-19
 Independent Review by: CS on 2020-05-19

Figure No. **5.15-1** Page 3 of 5

Public Services within One Mile of Proposed Prineville to Reno Fiber Optic Line



Notes
 1. Coordinate System: NAD 1983 UTM Zone 10N
 2. Data source: Esri 2020; USGS 2020; BLM 2020
 3. Service Layer Credits: Sources: Esri, HERE, Garmin, Intermap, increment P Corp., GEBCO, USGS, FAO, NPS, NRCAN, GeoBase, IGN, Kadaster NL, Ordnance Survey, Esri Japan, METI, Esri China (Hong Kong), (c) OpenStreetMap contributors, and the GIS User Community

- Fire Station
- Airport
- Canal
- Populated Place
- Church
- Range
- School
- Park
- California National Historic Trail
- Recreational Trails and Byways
- Alignment
- 1-mile Buffer

- Land Ownership**
- Bureau of Indian Affairs (BIA)
 - Bureau of Land Management (BLM)
 - Department Of Defense (DOD)
 - US Fish and Wildlife (USFW)
 - US Forest Service (USFS)
 - State
 - Local
 - Private or Unknown

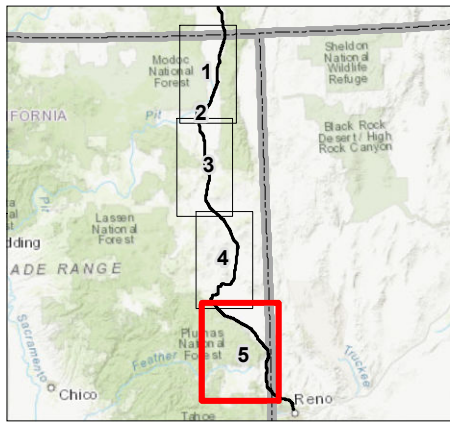
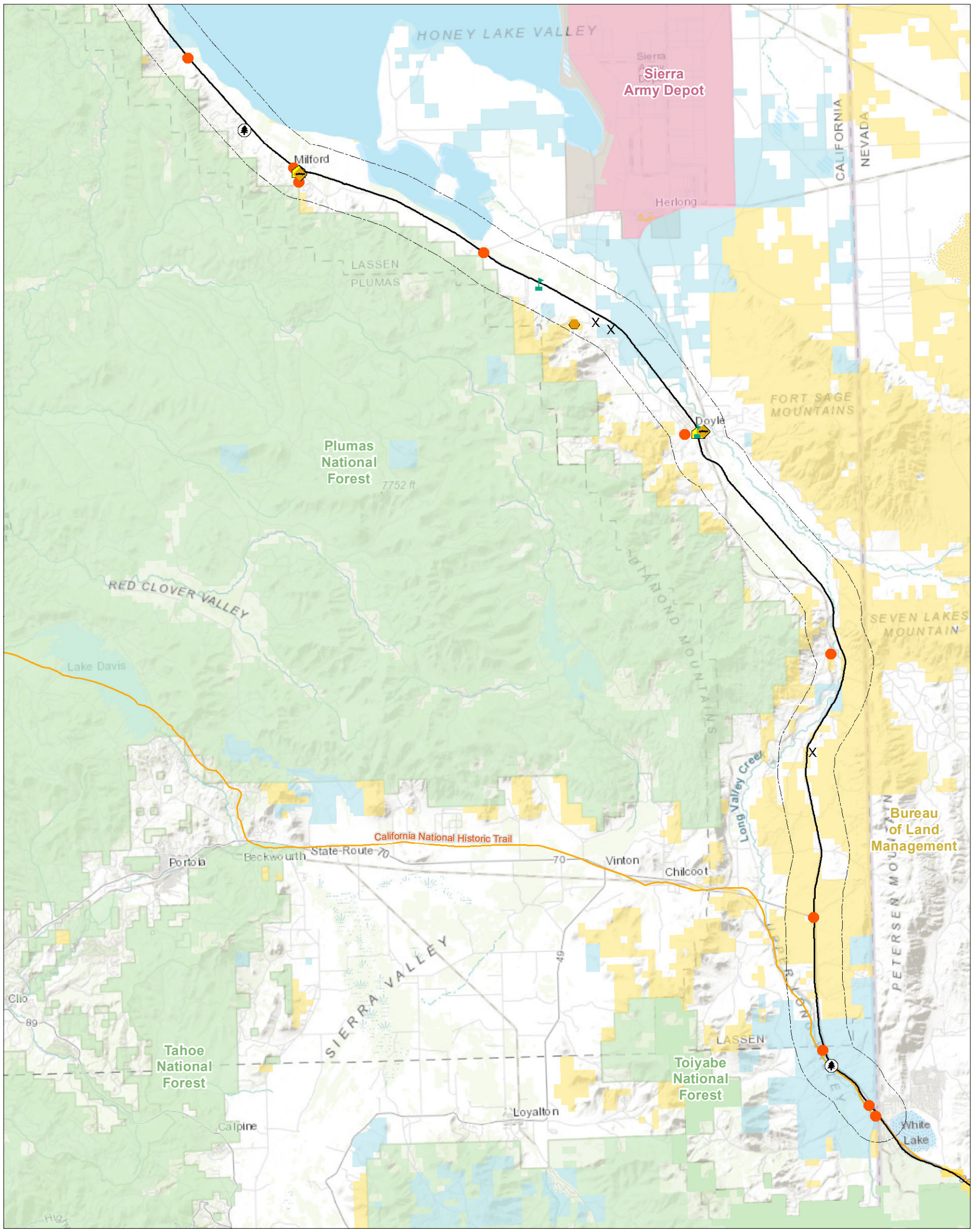
0 2.5 5 Miles
 1:230,000 (At Original document size of 11x17)



Project Location: Prineville, OR to Reno, NV
 Client/Project: Zayo Fiber Optic Line--Prineville to Reno June 2020
 Prepared by JC on 2020-05-19
 Technical Review by DA on 2020-05-19
 Independent Review by CS on 2020-05-19

Figure No. **5.15-1** Page 4 of 5

Public Services within One Mile of Proposed Prineville to Reno Fiber Optic Line



- | | |
|--|--|
| <ul style="list-style-type: none"> ■ Public Building ● Populated Place X Mine ● Range ■ School ● Park — California National Historic Trail — Alignment 1-mile Buffer | <p>Land Ownership</p> <ul style="list-style-type: none"> ■ Bureau of Indian Affairs (BIA) ■ Bureau of Land Management (BLM) ■ Department Of Defense (DOD) ■ US Forest Service (USFS) ■ State ■ Local ■ Private or Unknown |
|--|--|

0 2.5 5 Miles
 1:230,000 (At Original document size of 11x17)



Project Location: Prineville, OR to Reno, NV
 Client/Project: Zayo Fiber Optic Line--Prineville to Reno
 Date: June 2020

Figure No. **5.15-1** Page 5 of 5

Public Services within One Mile of Proposed Prineville to Reno Fiber Optic Line

Notes
 1. Coordinate System: NAD 1983 UTM Zone 10N
 2. Data source: Esri 2020; USGS 2020; BLM 2020
 3. Service Layer Credits: Sources: Esri, HERE, Garmin, Intermap, increment P Corp., GEBCO, USGS, FAO, NPS, NRCAN, GeoBase, IGN, Kadaster NL, Ordnance Survey, Esri Japan, METI, Esri China (Hong Kong), (c) OpenStreetMap contributors, and the GIS User Community

This page intentionally left blank.



PROPONENT’S ENVIRONMENTAL ASSESSMENT – ZAYO PRINEVILLE-TO-RENO FIBER OPTIC PROJECT

Public Services

Fire

As discussed in Section 5.20, Wildfire, the project falls within FRAs, LRAs (incorporated and unincorporated), and SRAs. Areas mapped as FRAs, SRAs, or LRAs are the responsibility of the federal, state, or local fire departments, respectively. The project crosses land mapped by the CPUC as either moderate or high fire threat districts, as well as areas mapped by CAL FIRE as the following Fire Hazard Severity Zones (FHSZs): Moderate FHSZs, High FHSZs, and Very High FHSZs (CAL FIRE 2007).

Wildland fire protection within SRAs is provided through a mutual aid agreement between CAL FIRE and USFS, and the project is within the CAL FIRE Lassen-Modoc Unit (LMU). The Lassen-Modoc-Plumas Unit of CAL FIRE works closely with other agencies including BLM, Lassen National Forest, Modoc National Forest, Plumas National Forest, CDFW, Caltrans, the California Highway Patrol, and county and city agencies (CPUC 2020; CAL FIRE 2020). In addition, fire protection services are provided by Modoc, Lassen, and Sierra Counties; the City of Alturas Fire Department; and other volunteer fire districts such as Sierraville, Davis Creek, Doyle, and Standish-Litchfield. Fire stations within 1 mile of the project are listed in Table 5.15-2 by distance from the project.

Medical Aid and Emergency Fire Dispatch in Modoc County is handled by the Modoc County Sheriff’s department. The fire response time guideline established by the Center for Public Safety Excellence (formerly the Commission on Fire Accreditation International) is 5 minutes and 50 seconds at least 90 percent of the time. Rural fire departments may not meet these standards due to the distance from the fire department to the area where service is needed. The Alturas City Fire Department’s response time within the city is approximately 5 minutes. The Alturas City Fire Department maintains mutual aid agreements with USFS, the Alturas Rancheria, and the Modoc County Hospital. (Modoc LAFCo 2010). Lassen County emergency response data was unavailable.

Sierra County uses the guideline established by the National Fire Protection Association (NFPA) for fire response times, which is 6 minutes at least 90 percent of the time, with response time measured from the 911 call time to the arrival time of the first-responder at the scene. Sierra County Fire Department response time is usually 10 to 15 minutes. Sierra County Fire Department does not meet suggested NFPA guidelines, as Sierra County contains several rural settings where homes are not accessible in the winter and have a greater than 45-minute response time in the summer (Jackson Meadows/Webber Lake/Independence Lake/Ground Hog Rock). The Sierra County Fire Department does provide service to areas outside the boundaries only by Mutual Aid, such as Truckee, Sierra City, Loyalton, Beckwourth, Sierra Valley, and Loyalton (Sierra LAFCo 2018).

Table 5.15-2: Fire Facilities within 1 Mile of the Project

Name	County	Distance from Project (miles)
US Fire Control Office Fire station	Lassen County	0.02
Davis Creek Volunteer Fire Department	Modoc County	0.07
Milford Volunteer Fire Station	Lassen County	0.10
Alturas Fire Department Fire Station	Modoc County	0.14



PROPONENT’S ENVIRONMENTAL ASSESSMENT – ZAYO PRINEVILLE-TO-RENO FIBER OPTIC PROJECT

Public Services

Name	County	Distance from Project (miles)
Doyle Fire Department Volunteer Fire Station	Lassen County	0.22
Alturas Cal Fire Station	Modoc County	0.25
Likely West Valley Fire Station	Modoc County	0.48
Likely Fire Department	Modoc County	0.48
Alturas Rural Fire Hall Fire Station	Modoc County	0.51
Janesville Fire District Fire Station	Lassen County	0.99

Schools

The Modoc County Office of Education oversees public education in Modoc County. There are three school districts within Modoc County: Modoc Joint Unified School District (MJUSD), Surprise Valley Joint Unified School District, and Tulelake Basin Joint Unified School District (Modoc County Office of Education 2018). The project area is within the MJUSD boundary. MJUSD serves approximately 870 students from Alturas, Cedarville, Canby, Likely, Davis Creek, New Pine Creek, Madeline, and the surrounding areas. There are six schools in MJUSD: one traditional high school, one middle school, one continuation high school, one community day school, and two elementary schools. (MJUSD 2019).

The Lassen County Office of Education oversees public education in Lassen County. The project is within Ravendale-Termo Elementary School District, Lassen Union High School District, and Fort Sage Unified School District boundaries. The Ravendale-Termo Elementary School District is a kindergarten through eighth grade district with one kindergarten through eighth grade school, Juniper Ridge Elementary School, and serves approximately nine students in Transitional Kindergarten (TK) through eighth grade (Ravendale-Termo Elementary School District 2019). The Lassen Union High School District encompasses a large geographic area, which includes the following elementary districts; Janesville Union Elementary School District, Johnstonville Elementary School District, Richmond Elementary School District, Shaffer Union Elementary School District, and Susanville School District. The Lassen Union High School District serves approximately 787 students grades 9 through 12 (Lassen-Union High School District 2019). The Fort Sage Unified School District is a TK through grade 12 school district. The district consists of three schools and a charter school: Mt. Lassen Charter School, Sierra Primary (grades TK through 6), Herlong Jr. High (grades 7 and 8), and Herlong High School (grades 9 through 12). The middle school and comprehensive high school are located on the same campus (Fort Sage Unified School District 2019)

The Sierra County Office of Education oversees public education in Sierra County. The Sierra-Plumas Joint Unified School District and Sierra County Office of Education serves all of Sierra County and the eastern quarter of Plumas County. The Sierra-Plumas Joint Unified School District it serves approximately 428 students and has two high schools, one elementary school, and one K–12 school. (Sierra County Office of Education 2019).

Schools within 1 mile of the project are listed in Table 5.15-3 by distance from the project.



PROPONENT’S ENVIRONMENTAL ASSESSMENT – ZAYO PRINEVILLE-TO-RENO FIBER OPTIC PROJECT

Public Services

Table 5.15-3: Schools within 1 Mile of the Project

School	County	Distance from Project (mile)
Modoc Early Head Start	Modoc	Adjacent
Modoc Child Care Council	Modoc	0.01
Alturas State Pre-School	Modoc	0.02
South Fork Elementary School	Modoc	0.02
Long Valley Elementary School	Lassen	0.03
Bird Flat School	Lassen	0.05
Madeline School	Lassen	0.06
State Line Elementary School	Modoc	0.07
Modoc County Office Of Education	Modoc	0.09
Lake School	Lassen	0.09
Shaffer Elementary School	Lassen	0.09
Modoc High School	Modoc	0.12
University Of California Cooperative Extension	Modoc	0.15
Modoc County Office Of Education	Modoc	0.16
Modoc Charter School	Modoc	0.19
Ravendale Elementary School	Lassen	0.28
Modoc Joint Unified School District	Modoc	0.69
Modoc Joint Unified School District	Modoc	0.73
Warner High School	Modoc	0.75
Alturas Elementary School	Modoc	0.77
Modoc Middle School	Modoc	0.81

Parks

There are multiple federal, state, and local parks within 1 mile of the project area, as identified in Table 5.16-1 in Section 5.16, Recreation, and depicted in Figure 5.15-1. Additional information about recreation facilities is provided in Section 5.16, Recreation.

Hospitals

There is one hospital located within 1 mile of the project, as identified in Table 5.15-4. Modoc Medical Center is a 16-bed, critical access hospital providing emergency services, family practice medicine, retail



PROPONENT’S ENVIRONMENTAL ASSESSMENT – ZAYO PRINEVILLE-TO-RENO FIBER OPTIC PROJECT

Public Services

pharmacy and operating a 51-bed skilled nursing facility in addition to other ancillary services such as radiology, laboratory, physical therapy, and day surgery services (Modoc Medical Center 2018).

Other

Other public service facilities, including medical facilities, churches, and libraries, within 1 mile of the project are listed in Table 5.15-4 by distance from the project.

Table 5.15-4: Other Public Services within 1 Mile of the Project

Name	County	Distance from Project
Modoc County Museum	Modoc	0.01
Church of the Nazarene	Modoc	0.02
Federated Community Church	Modoc	0.03
Likely Cemetery	Modoc	0.05
Modoc County Veterans Services Office	Modoc	0.06
Modoc Medical Center – Warnerview Skilled Nursing Facility	Modoc	0.07
Mercy Modoc Medical Centers	Modoc	0.07
Standish Bible Church	Lassen	0.08
T.E.A.C.H. – Training Employment & Community Help Inc	Modoc	0.09
Davis Creek Library	Modoc	0.12
Faith Baha’I Church	Modoc	0.12
Modoc County Watermaster Department	Modoc	0.13
Sacred Heart Catholic Church	Modoc	0.15
Modoc County Library	Modoc	0.16
Modoc Medical Center	Modoc	0.17
St Michaels Episcopal Church	Modoc	0.19
Modoc Medical Center	Modoc	0.20
Cedarville Rancheria Headquarters	Modoc	0.21
Modoc County Road Department	Modoc	0.34
Alturas Baptist Church Southern	Modoc	0.37
Christian Life Assembly Church	Modoc	0.38
Alturas Seventh Day Adventist Church	Modoc	0.46
Ravendale Airport	Lassen	0.48
Faith Baptist Church	Modoc	0.61



PROPONENT’S ENVIRONMENTAL ASSESSMENT – ZAYO PRINEVILLE-TO-RENO FIBER OPTIC PROJECT

Public Services

5.15.2 Regulatory Setting

No regulatory background information for public services is relevant to the project.

5.15.3 Impact Questions

Would the project:	Potentially Significant Impact	Less-than-Significant Impact with Mitigation Incorporated	Less-than-Significant Impact	No Impact
a) Would the project result in substantial adverse physical impacts associated with the provision of new or physically altered governmental facilities, need for new or physically altered governmental facilities, the construction of which could cause significant environmental impacts, in order to maintain acceptable service ratios, response times or other performance objectives for any of the public services:	<input type="checkbox"/>	<input type="checkbox"/>	<input type="checkbox"/>	<input checked="" type="checkbox"/>
Fire protection?	<input type="checkbox"/>	<input type="checkbox"/>	<input checked="" type="checkbox"/>	<input type="checkbox"/>
Police protection?	<input type="checkbox"/>	<input type="checkbox"/>	<input checked="" type="checkbox"/>	<input type="checkbox"/>
Schools?	<input type="checkbox"/>	<input type="checkbox"/>	<input type="checkbox"/>	<input checked="" type="checkbox"/>
Parks?	<input type="checkbox"/>	<input type="checkbox"/>	<input checked="" type="checkbox"/>	<input type="checkbox"/>
Other public facilities?	<input type="checkbox"/>	<input type="checkbox"/>	<input type="checkbox"/>	<input checked="" type="checkbox"/>



PROPONENT'S ENVIRONMENTAL ASSESSMENT – ZAYO PRINEVILLE-TO-RENO FIBER OPTIC PROJECT

Public Services

5.15.4 Impact Analysis

a) Would the project result in substantial adverse physical impacts associated with the provision of new or physically altered governmental facilities, need for new or physically altered governmental facilities, the construction of which could cause significant environmental impacts, in order to maintain acceptable service ratios, response times or other performance objectives for any of the public services:

Fire protection?

Police protection?

Schools?

Parks?

Other public facilities?

The project would not result in substantial adverse physical impacts that could cause significant environmental impacts to maintain public services. Project construction would result in a temporary, short-term increase of up to approximately 48 construction workers at various locations onsite at any time when work activities are conducted concurrently; however, the project would not create permanent employment in the area. Although construction workers traveling to the project area may use existing public services or amenities, this potential increase in demand would be minimal and temporary and would not require new or altered government facilities. Additionally, construction activities are not expected to result in the need for new or physically altered governmental facilities or to increase population, and the project would mostly occur within public right-of-way and would not displace any people or housing. As described in Section 5.14, Population and Housing, the project would not include development of new residential units that would increase population; therefore, no permanent increase in the demand for public services in the area would occur.

Fire and Police Protection

As described in Section 5.7, Hazards, Hazardous Materials, and Public Safety; Section 5.17, Transportation; and Section 5.20, Wildfire, the project would not conflict with any adopted emergency response plans or evacuation plans. Although not officially designated as an evacuation route, US 395 is a major highway that would likely be used during an evacuation if there was a large fire or other emergency in the area that required mass evacuations in either Modoc, Lassen, or Sierra Counties. Access for emergency vehicles and public evacuation would be maintained throughout construction, and no full roadway closures would be required. As described in Section 3.0, Proposed Project Description, emergency access routes, including ingress and egress, would be maintained throughout project construction. Construction vehicles and equipment are anticipated to access project construction areas by using existing roadways and work would generally occur within the roadway right-of-way. Construction



PROPONENT'S ENVIRONMENTAL ASSESSMENT – ZAYO PRINEVILLE-TO-RENO FIBER OPTIC PROJECT

Public Services

vehicles and equipment are expected to be staged or parked within or immediately adjacent to the project area rights-of-way. During and after construction, roads would continue to operate at the same acceptable LOS, with similar travel speeds and no capacity deficiencies. Therefore, the project would not affect service ratios, response times, or other performance objectives for any public services, and impacts would be less than significant.

Schools

The project would not include developing new residential units or services that would generate a new residential population in the area. Therefore, the project would not cause an increase in the demand on existing schools that would affect school enrollment or performance objectives. While the project is within 0.25 mile of 15 schools, the project's construction-related activity is temporary and short-term and would be spread out over the entire project alignment, with differing activities occurring in focused areas at any given time. As discussed in Section 5.17, Transportation, the access to adjoining facilities, such as schools, would be maintained throughout the duration of construction activities. Once construction is completed, construction-related traffic and activity would cease. Therefore, construction would not delay access to schools or increase a demand on existing schools. No impact would occur.

Parks

Multiple public parks and trails are located within 1 mile of the project. As described in Section 5.16, Recreation, construction activities may result in short-term, temporary closures of trail access. Any closures that are required for public safety during project construction would be temporary and short-term and would not require the construction of a new replacement trail (APM REC-1). The project would not include developing new residential units or services that would generate a new daytime or residential population in the area that would increase the demand on parks. Construction workers traveling to the area may use existing public services or amenities such as parks; however, this potential increase in demand would be minimal and temporary and would not exacerbate the need for or deterioration of existing park facilities or result in the need for new facilities. Given the limited duration of construction and the availability of other recreational facilities in the vicinity of the project, any resulting increase in the use of nearby recreational facilities would be brief and temporary and would have a negligible effect on the condition of the nearby parks. The project would not include construction of new recreational facilities or require the construction or expansion of recreational facilities. The project would not change the character of any of the spanned or adjacent parks and recreation facilities; construction impacts would be temporary, and the project running line would be placed within existing Caltrans- and county-maintained roadway rights-of-way, with the exception of some ancillary facilities that would be placed immediately adjacent to the existing roadway in several locations. The surrounding land would remain accessible for open access. Therefore, impacts would be less than significant.

Other Public Facilities

The project is located within 1 mile of multiple other public facilities, including museums, medical facilities, and churches; however, the project would not directly or indirectly induce growth or create need for additional public services, and access to these facilities would be maintained during construction of the



PROPONENT'S ENVIRONMENTAL ASSESSMENT – ZAYO PRINEVILLE-TO-RENO FIBER OPTIC PROJECT

Public Services

project. Construction of the project would not increase local population growth, nor would it result in the need for new public services or expansion of public facilities. Therefore, no impact would occur.

5.15.5 Draft Environmental Measures

There are no applicable environmental measures for public services.

