



Path: Q:\NaturalResources\SCF_ValleyIvyglen\mxd\2014\ReportsAndSubmissions\BTR\Phase2\BioResourceMaps_Phase2KEYMAP.mxd aaron.johnson 9/10/2014

Legend

Subtransmission Line

Fiber Optic Line

Map Page Indicator

amec

Service Layer Credits: Sources: Esri, DeLorme, NAVTEQ, USGS, NRCAN, METI, IPC, TomTom

1 in = 1 miles

0

0.25

0.5

1

Miles

N

Appendix A1 - Biological Resources

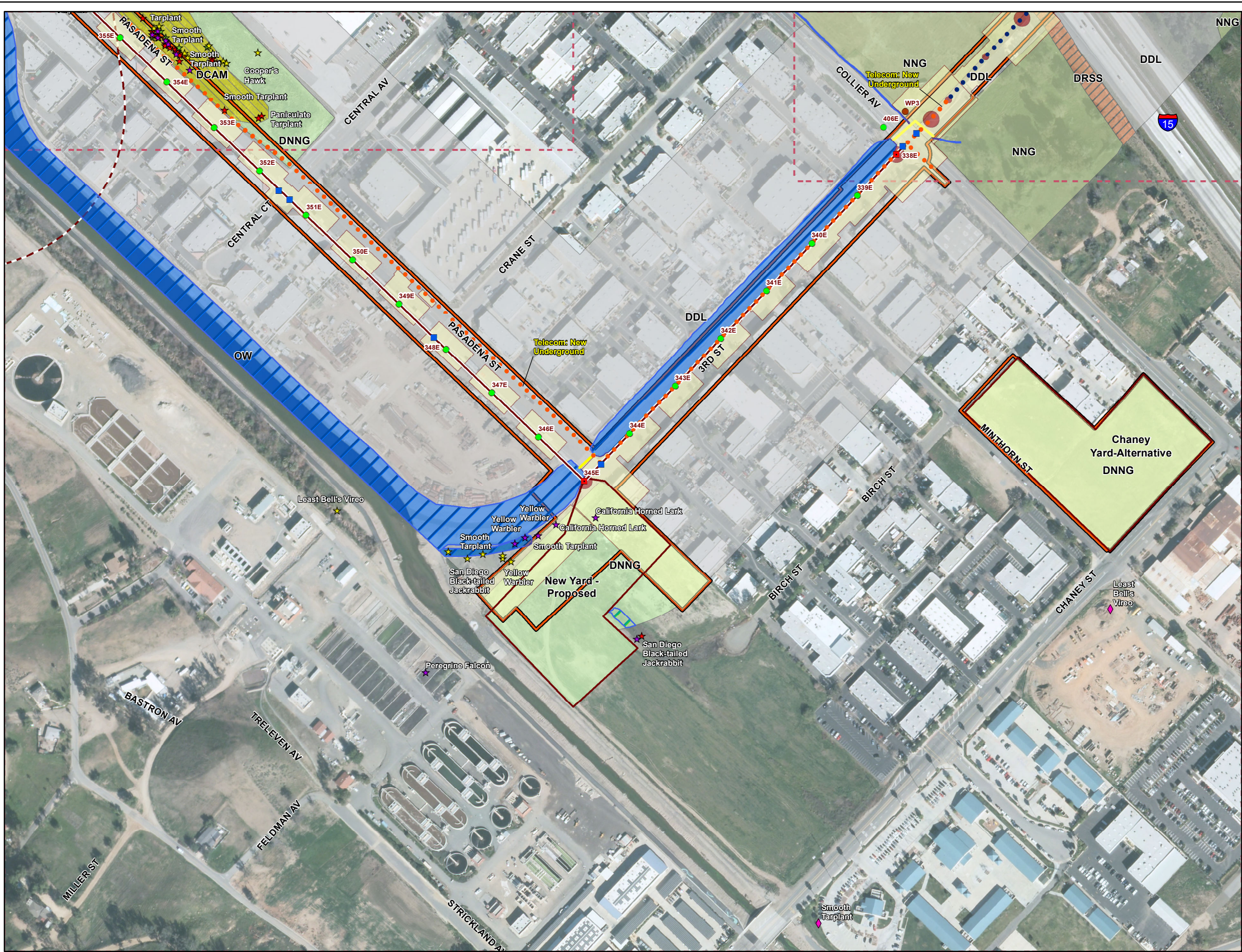
MSHCP Biological Resources Technical Report

for the Valley-Ivyglen Subtransmission Line Project

Phase 2

Riverside County, California

Keymap



Legend

Project Features*

Pole Type

- Guy
- LWSP (Guy Stub)
- Hybrid
- LWSP
- Riser
- Shoofly
- TSP
- Wood
- Vault
- Guard Structures
- Access Roads
- Material Yards

Construction Avoidance Area
(1 March - 31 August)

Conserved Lands (MSHCP)

CPUC Buffer (May 2013)

Castle & Cooke Properties

Riverside/Corona Resource Conservation District

Map Page Indicator

Subtransmission Route

- Segment 4
- Segment 5
- Segment 6
- Segment 7
- Fogarty-Ivyglen
- Shoofly
- Underground Portion (Segment 8)

Fiber Optic Line

- Overhead Fiber Optic Cable
- Underground Fiber Optic in Existing Conduit
- Underground Fiber Optic in New Conduit

Drainage Control Features (90%)

- Culvert
- Gabion
- Rip-Rap

Impact Areas*

- Permanent
- Temporary
- Tree Trimming Areas

Sensitive Species Data

- Sensitive Species (2014)
- Sensitive Species (2013)
- Sensitive Species (2012)
- Sensitive Species (2011)
- Sensitive Species (2010)
- Sensitive Species (2009)
- Sensitive Species (2008)
- Sensitive Species (2007)
- Sensitive Species (2006)
- CNDDB (2013)

Upland Vegetation Communities

- CC - Chamise Chaparral
- CLOW - Coast Live Oak Woodland
- RSS - Riversidean Sage Scrub
- DCC - Disturbed Chamise Chaparral
- DRSS - Disturbed Riversidean Sage Scrub
- DDL - Residential/Urban/Exotic
- NNG - Non-native Grassland
- DNNG - Disturbed Non-native Grassland
- SWS-U - Upland Southern Willow Scrub

MSHCP Riparian/Riverine Vegetation Communities

- CAM - Cismontane Alkali Marsh
- DCAM - Disturbed Cismontane Alkali Marsh
- RAFS - Riversidean Alluvial Fan Scrub
- DRAFS - Disturbed Riversidean Alluvial Fan Scrub
- SWS - Southern Willow Scrub
- FWM - Coastal and Valley Fresh Water Marsh
- OW - Open Water
- SCWR - Southern Cottonwood/Willow Riparian Forest
- MFS - Mule Fat Scrub
- SARW - Southern Sycamore/Alder Riparian Woodland
- RS - Riparian Scrub
- Riverine

Potential Jurisdictional Waters (AMEC)

- Waters of the State of California
- Waters of the U.S. and Waters of the State of California
- Wetland
- Existing Culvert
- Impacted JD Features

*** Map Notes:**

- Project Features subject to change based on geotechnical investigations, final engineering, ongoing coordination with the resource agencies, and field assessments conducted prior to construction
- Map Current as of 11/7/2014

Scale: 1 inch = 300 feet

North Arrow

Appendix A1 - Biological Resources

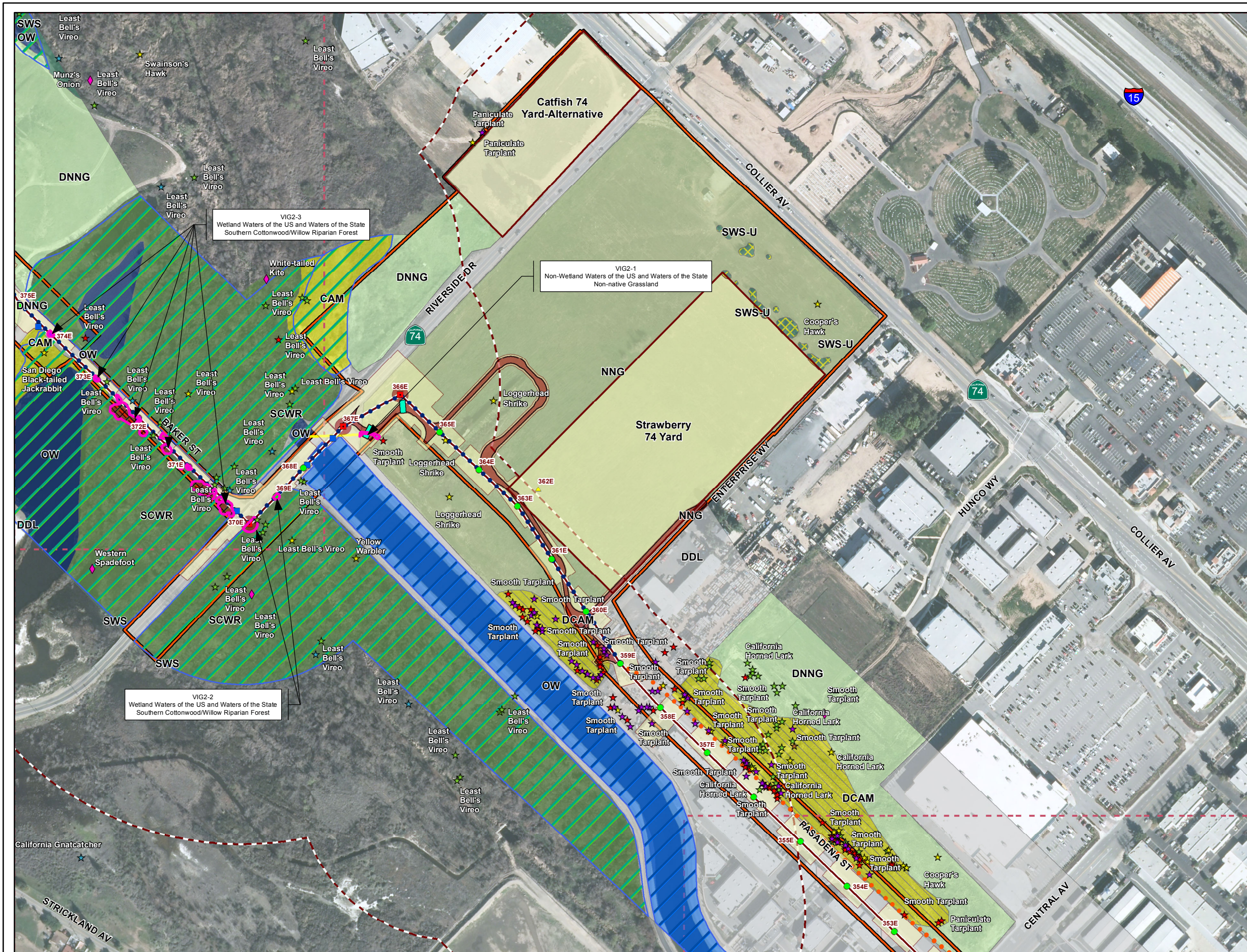
MSHCP Biological Resources Technical Report

for the Valley-Ivyglen Subtransmission Line Project

Phase 2

Riverside County, California

Map 1



Legend

Project Features*

Pole Type

- Guy
- LWSP (Guy Stub)
- Hybrid
- LWSP
- Riser
- Shoofly
- TSP
- Wood
- Vault
- Guard Structures
- Access Roads
- Material Yards
- Construction Avoidance Area (1 March - 31 August)
- Conserved Lands (MSHCP)
- CPUC Buffer (May 2013)
- Castle & Cooke Properties
- Riverside/Corona Resource Conservation District
- Map Page Indicator

Subtransmission Route

- Segment 4
- Segment 5
- Segment 6
- Segment 7
- Fogarty-Ivyglen
- Shoofly
- Underground Portion (Segment 8)

Fiber Optic Line

- Overhead Fiber Optic Cable
- Underground Fiber Optic in Existing Conduit
- Underground Fiber Optic in New Conduit

Drainage Control Features (90%)

- Culvert
- Gabion
- Rip-Rap

Impact Areas*

- Permanent
- Temporary
- Tree Trimming Areas

Sensitive Species Data

- Sensitive Species (2014)
- Sensitive Species (2013)
- Sensitive Species (2012)
- Sensitive Species (2011)
- Sensitive Species (2010)
- Sensitive Species (2009)
- Sensitive Species (2008)
- Sensitive Species (2007)
- Sensitive Species (2006)
- CNDDB (2013)

Upland Vegetation Communities

- CC - Chamise Chaparral
- CLOW - Coast Live Oak Woodland
- RSS - Riversidean Sage Scrub
- DCC - Disturbed Chamise Chaparral
- DRSS - Disturbed Riversidean Sage Scrub
- DDL - Residential/Urban/Exotic
- NNG - Non-native Grassland
- DNNG - Disturbed Non-native Grassland
- SWS-U - Upland Southern Willow Scrub

MSHCP Riparian/Riverine Vegetation Communities

- CAM - Cismontane Alkali Marsh
- DCAM - Disturbed Cismontane Alkali Marsh
- RAFS - Riversidean Alluvial Fan Scrub
- DRAFS - Disturbed Riversidean Alluvial Fan Scrub
- SWS - Southern Willow Scrub
- FWM - Coastal and Valley Fresh Water Marsh
- OW - Open Water
- SCWR - Southern Cottonwood/Willow Riparian Forest
- MFS - Mule Fat Scrub
- SARW - Southern Sycamore/Alder Riparian Woodland
- RS - Riparian Scrub
- Riverine

Potential Jurisdictional Waters (AMEC)

- Waters of the State of California
- Waters of the U.S. and Waters of the State of California
- Wetland
- Existing Culvert
- Impacted JD Features

*** Map Notes:**

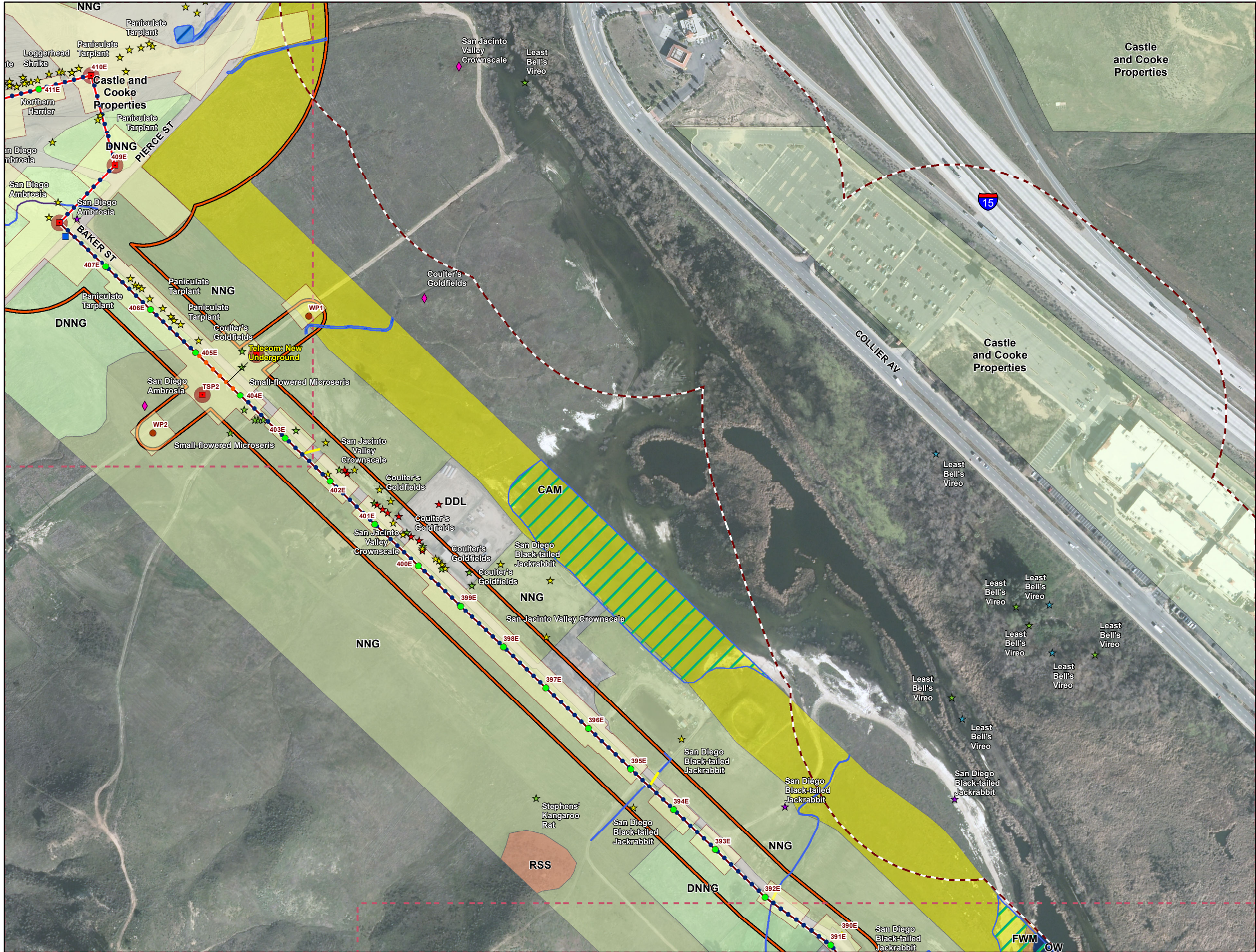
- Project Features subject to change based on geotechnical investigations, final engineering, ongoing coordination with the resource agencies, and field assessments conducted prior to construction
- Map Current as of 11/7/2014

amec

1 inch = 300 feet

0 150 300 Feet

Appendix A1 - Biological Resources
MSHCP Biological Resources Technical Report
for the Valley-Ivyglen Subtransmission Line Project
Phase 2
Riverside County, California
Map 2



Legend

Project Features*

Pole Type

- Guy
- LWSP (Guy Stub)
- Hybrid
- LWSP
- Riser
- Shoofly
- TSP
- Wood
- Vault
- Guard Structures
- Access Roads
- Material Yards
- Construction Avoidance Area (1 March - 31 August)
- Conserved Lands (MSHCP)
- CPUC Buffer (May 2013)
- Castle & Cooke Properties
- Riverside/Corona Resource Conservation District
- Map Page Indicator

Subtransmission Route

- Segment 4
- Segment 5
- Segment 6
- Segment 7
- Fogarty-Ivyglen
- Shoofly
- Underground Portion (Segment 8)

Fiber Optic Line

- Overhead Fiber Optic Cable
- Underground Fiber Optic in Existing Conduit
- Underground Fiber Optic in New Conduit

Drainage Control Features (90%)

- Culvert
- Gabion
- Rip-Rap

Impact Areas*

- Permanent
- Temporary
- Tree Trimming Areas

Sensitive Species Data

- Sensitive Species (2014)
- Sensitive Species (2013)
- Sensitive Species (2012)
- Sensitive Species (2011)
- Sensitive Species (2010)
- Sensitive Species (2009)
- Sensitive Species (2008)
- Sensitive Species (2007)
- Sensitive Species (2006)
- CNDDB (2013)

Upland Vegetation Communities

- CC - Chamise Chaparral
- CLOW - Coast Live Oak Woodland
- RSS - Riversidean Sage Scrub
- DCC - Disturbed Chamise Chaparral
- DRSS - Disturbed Riversidean Sage Scrub
- DDL - Residential/Urban/Exotic
- NNG - Non-native Grassland
- DNNG - Disturbed Non-native Grassland
- SWS-U - Upland Southern Willow Scrub

MSHCP Riparian/Riverine Vegetation Communities

- CAM - Cismontane Alkali Marsh
- DCAM - Disturbed Cismontane Alkali Marsh
- RAFS - Riversidean Alluvial Fan Scrub
- DRAFS - Disturbed Riversidean Alluvial Fan Scrub
- SWS - Southern Willow Scrub
- FWM - Coastal and Valley Fresh Water Marsh
- OW - Open Water
- SCWR - Southern Cottonwood/Willow Riparian Forest
- MFS - Mule Fat Scrub
- SARW - Southern Sycamore/Alder Riparian Woodland
- RS - Riparian Scrub
- Riverine

Potential Jurisdictional Waters (AMEC)

- Waters of the State of California
- Waters of the U.S. and Waters of the State of California
- Wetland
- Existing Culvert
- Impacted JD Features

*** Map Notes:**

- Project Features subject to change based on geotechnical investigations, final engineering, ongoing coordination with the resource agencies, and field assessments conducted prior to construction
- Map Current as of 11/7/2014

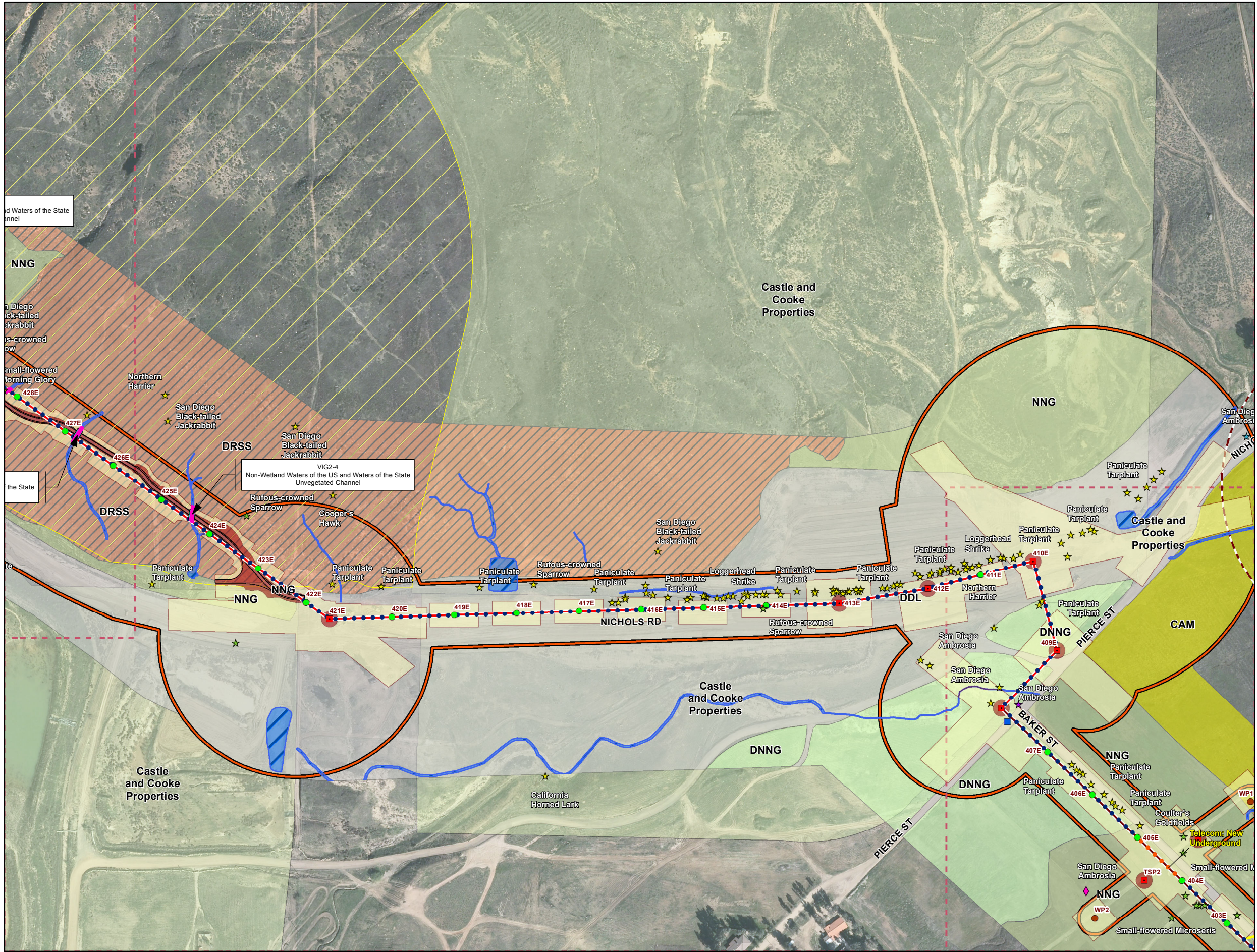
amec

1 inch = 300 feet

0 150 300 Feet

Appendix A1 - Biological Resources
MSHCP Biological Resources Technical Report
for the Valley-Ivyglen Subtransmission Line Project
Phase 2
Riverside County, California

Map 4



Legend

Project Features*

Pole Type

- Guy
- LWSP (Guy Stub)
- Hybrid
- LWSP
- Riser
- Shoofly
- TSP
- Wood
- Vault
- Guard Structures
- Access Roads
- Material Yards

Subtransmission Route

- Segment 4
- Segment 5
- Segment 6
- Segment 7
- Fogarty-Ivyglen
- Shoofly
- Underground Portion (Segment 8)

Fiber Optic Line

- Overhead Fiber Optic Cable
- Underground Fiber Optic in Existing Conduit
- Underground Fiber Optic in New Conduit

Drainage Control Features (90%)

- Culvert
- Gabion
- Rip-Rap

Impact Areas*

- Permanent
- Temporary
- Tree Trimming Areas

Sensitive Species Data

- Sensitive Species (2014)
- Sensitive Species (2013)
- Sensitive Species (2012)
- Sensitive Species (2011)
- Sensitive Species (2010)
- Sensitive Species (2009)
- Sensitive Species (2008)
- Sensitive Species (2007)
- Sensitive Species (2006)
- CNDDB (2013)

Upland Vegetation Communities

- CC - Chamise Chaparral
- CLOW - Coast Live Oak Woodland
- RSS - Riversidean Sage Scrub
- DCC - Disturbed Chamise Chaparral
- DRSS - Disturbed Riversidean Sage Scrub
- DDL - Residential/Urban/Exotic
- NNG - Non-native Grassland
- DNNG - Disturbed Non-native Grassland
- SWS-U - Upland Southern Willow Scrub

MSHCP Riparian/Riverine Vegetation Communities

- CAM - Cismontane Alkali Marsh
- DCAM - Disturbed Cismontane Alkali Marsh
- RAFS - Riversidean Alluvial Fan Scrub
- DRAFS - Disturbed Riversidean Alluvial Fan Scrub
- SWS - Southern Willow Scrub
- FWM - Coastal and Valley Fresh Water Marsh
- OW - Open Water
- SCWR - Southern Cottonwood/Willow Riparian Forest
- MFS - Mule Fat Scrub
- SARW - Southern Sycamore/Alder Riparian Woodland
- RS - Riparian Scrub
- Riverine

Potential Jurisdictional Waters (AMEC)

- Waters of the State of California
- Waters of the U.S. and Waters of the State of California
- Wetland
- Existing Culvert
- Impacted JD Features

*** Map Notes:**

- Project Features subject to change based on geotechnical investigations, final engineering, ongoing coordination with the resource agencies, and field assessments conducted prior to construction
- Map Current as of 11/7/2014

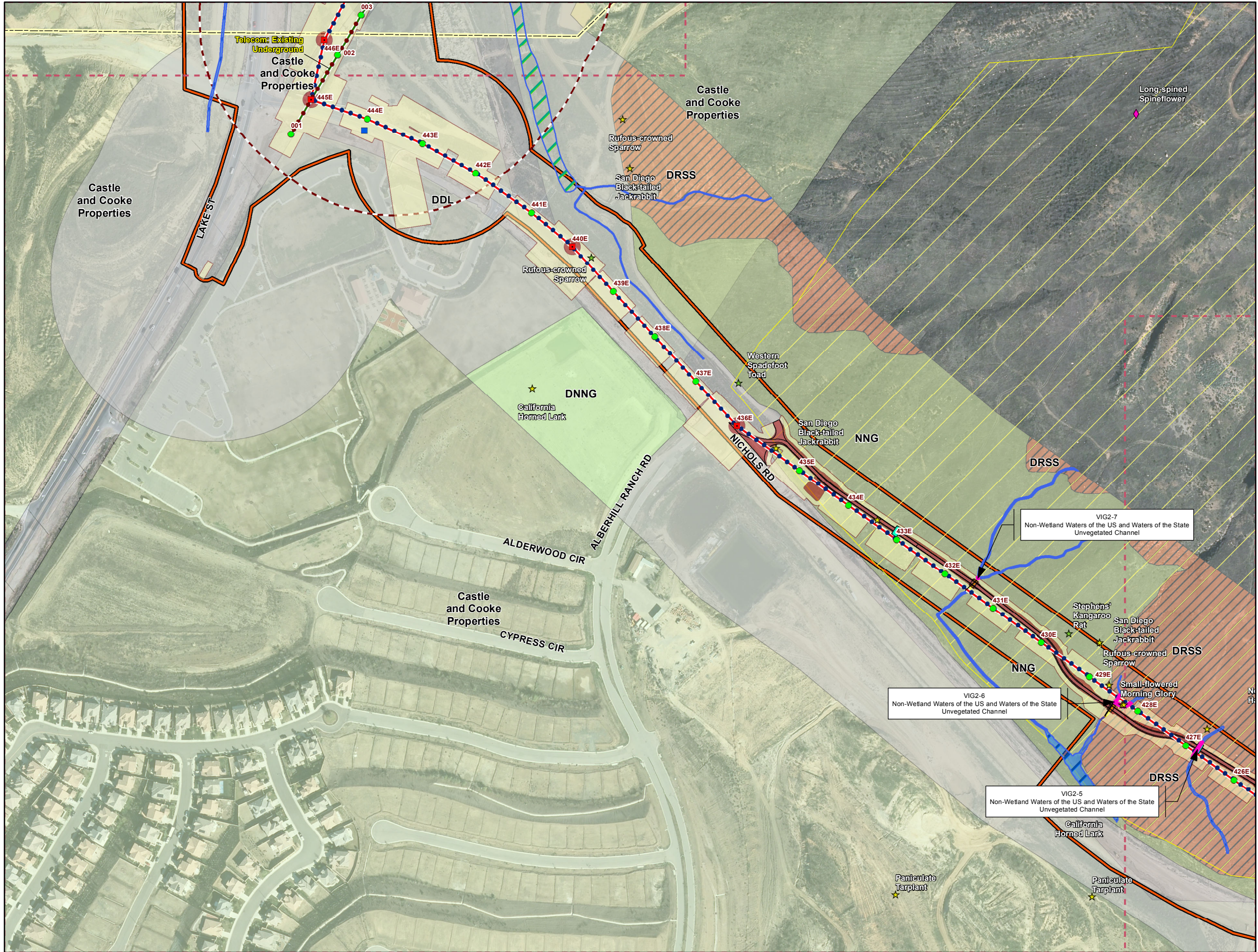
amec

1 inch = 300 feet

0 150 300 Feet

Appendix A1 - Biological Resources
MSHCP Biological Resources Technical Report
Phase 2
Riverside County, California

Map 5



Legend

Project Features*

Pole Type

- Guy
- LWSP (Guy Stub)
- Hybrid
- LWSP
- Riser
- Shoofly
- TSP
- Wood
- Vault
- Guard Structures
- Access Roads
- Material Yards
- Construction Avoidance Area (1 March - 31 August)
- Conserved Lands (MSHCP)
- CPUC Buffer (May 2013)
- Castle & Cooke Properties
- Riverside/Corona Resource Conservation District
- Map Page Indicator

Subtransmission Route

- Segment 4
- Segment 5
- Segment 6
- Segment 7
- Fogarty-Ivyglen
- Shoofly
- Underground Portion (Segment 8)

Fiber Optic Line

- Overhead Fiber Optic Cable
- Underground Fiber Optic in Existing Conduit
- Underground Fiber Optic in New Conduit

Drainage Control Features (90%)

- Culvert
- Gabion
- Rip-Rap

Impact Areas*

- Permanent
- Temporary
- Tree Trimming Areas

Sensitive Species Data

- Sensitive Species (2014)
- Sensitive Species (2013)
- Sensitive Species (2012)
- Sensitive Species (2011)
- Sensitive Species (2010)
- Sensitive Species (2009)
- Sensitive Species (2008)
- Sensitive Species (2007)
- Sensitive Species (2006)
- CNDDB (2013)

Upland Vegetation Communities

- CC - Chamise Chaparral
- CLOW - Coast Live Oak Woodland
- RSS - Riversidean Sage Scrub
- DCC - Disturbed Chamise Chaparral
- DRSS - Disturbed Riversidean Sage Scrub
- DDL - Residential/Urban/Exotic
- NNG - Non-native Grassland
- DNGG - Disturbed Non-native Grassland
- SWS-U - Upland Southern Willow Scrub

MSHCP Riparian/Riverine Vegetation Communities

- CAM - Cismontane Alkali Marsh
- DCAM - Disturbed Cismontane Alkali Marsh
- RAFA - Riversidean Alluvial Fan Scrub
- DRAFA - Disturbed Riversidean Alluvial Fan Scrub
- SWS - Southern Willow Scrub
- FWM - Coastal and Valley Fresh Water Marsh
- OW - Open Water
- SCWR - Southern Cottonwood/Willow Riparian Forest
- MFS - Mule Fat Scrub
- SARW - Southern Sycamore/Alder Riparian Woodland
- RS - Riparian Scrub
- Riverine

Potential Jurisdictional Waters (AMEC)

- Waters of the State of California
- Waters of the U.S. and Waters of the State of California
- Wetland
- Existing Culvert
- Impacted JD Features

*** Map Notes:**

- Project Features subject to change based on geotechnical investigations, final engineering, ongoing coordination with the resource agencies, and field assessments conducted prior to construction
- Map Current as of 11/7/2014

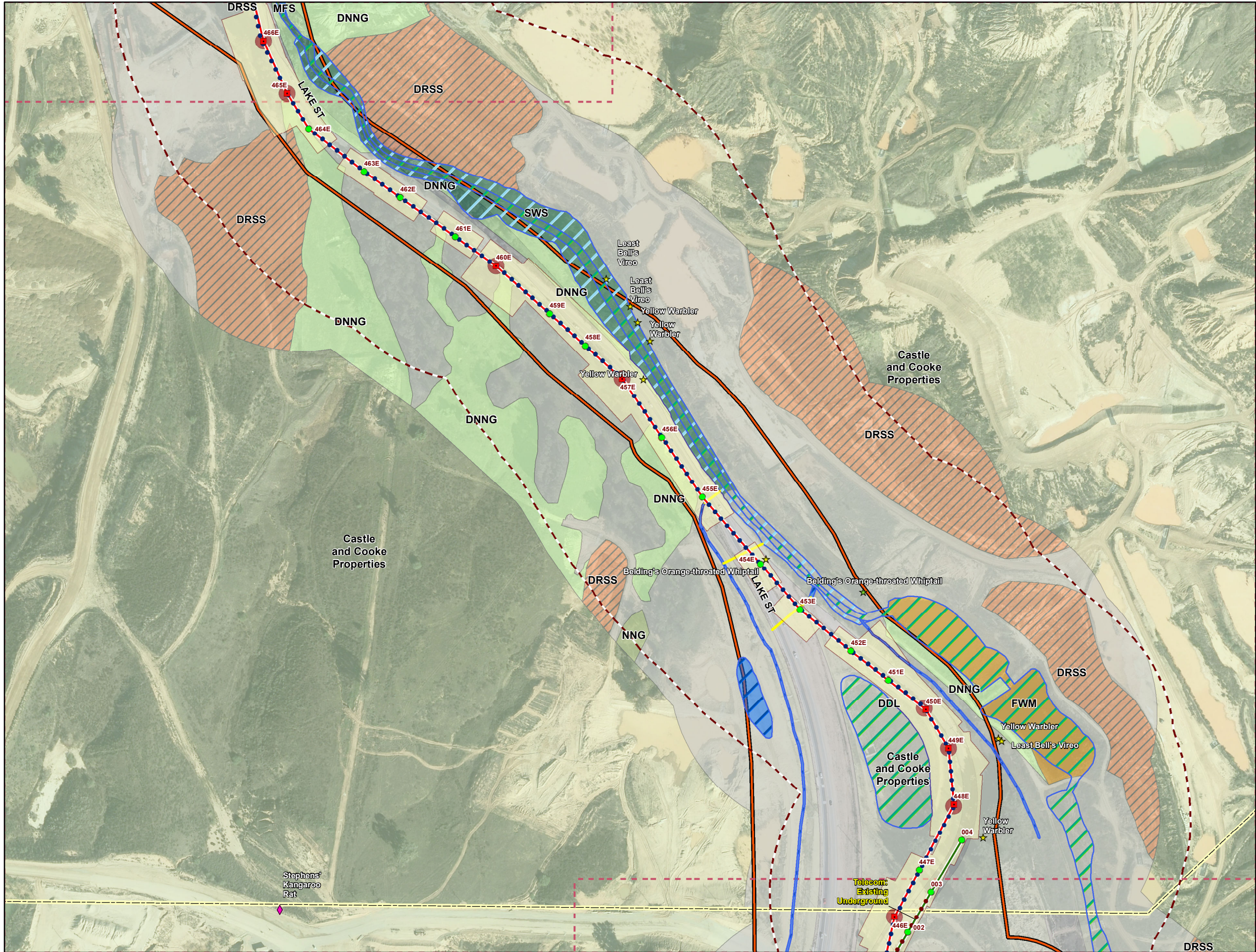
amec

1 inch = 300 feet

0 150 300 Feet

Appendix A1 - Biological Resources
MSHCP Biological Resources Technical Report
for the Valley-Ivyglen Subtransmission Line Project
Phase 2
Riverside County, California

Map 6



Legend

Project Features*

Pole Type

- Guy
- LWSP (Guy Stub)
- Hybrid
- LWSP
- Riser
- Shoofly
- TSP
- Wood
- Vault
- Guard Structures
- Access Roads
- Material Yards

Construction Avoidance Area
(1 March - 31 August)

Conserved Lands (MSHCP)
CPUC Buffer (May 2013)

Castle & Cooke Properties

Riverside/Corona Resource Conservation District

Map Page Indicator

Subtransmission Route

- Segment 4
- Segment 5
- Segment 6
- Segment 7
- Fogarty-Ivyglen
- Shoofly
- Underground Portion (Segment 8)

Fiber Optic Line

- Overhead Fiber Optic Cable
- Underground Fiber Optic in Existing Conduit
- Underground Fiber Optic in New Conduit

Drainage Control Features (90%)

- Culvert
- Gabion
- Rip-Rap

Impact Areas*

- Permanent
- Temporary
- Tree Trimming Areas

Sensitive Species Data

- Sensitive Species (2014)
- Sensitive Species (2013)
- Sensitive Species (2012)
- Sensitive Species (2011)
- Sensitive Species (2010)
- Sensitive Species (2009)
- Sensitive Species (2008)
- Sensitive Species (2007)
- Sensitive Species (2006)
- CNDDB (2013)

Upland Vegetation Communities

- CC - Chamise Chaparral
- CLOW - Coast Live Oak Woodland
- RSS - Riversidean Sage Scrub
- DCC - Disturbed Chamise Chaparral
- DRSS - Disturbed Riversidean Sage Scrub
- DDL - Residential/Urban/Exotic
- NNG - Non-native Grassland
- DNNG - Disturbed Non-native Grassland
- SWS-U - Upland Southern Willow Scrub

MSHCP Riparian/Riverine Vegetation Communities

- CAM - Cismontane Alkali Marsh
- DCAM - Disturbed Cismontane Alkali Marsh
- RAFS - Riversidean Alluvial Fan Scrub
- DRAFS - Disturbed Riversidean Alluvial Fan Scrub
- SWS - Southern Willow Scrub
- FWM - Coastal and Valley Fresh Water Marsh
- OW - Open Water
- SCWR - Southern Cottonwood/Willow Riparian Forest
- MFS - Mule Fat Scrub
- SARW - Southern Sycamore/Alder Riparian Woodland
- RS - Riparian Scrub
- Riverine

Potential Jurisdictional Waters (AMEC)

- Waters of the State of California
- Waters of the U.S. and Waters of the State of California
- Wetland
- Existing Culvert
- Impacted JD Features

*** Map Notes:**

- Project Features subject to change based on geotechnical investigations, final engineering, ongoing coordination with the resource agencies, and field assessments conducted prior to construction
- Map Current as of 11/7/2014

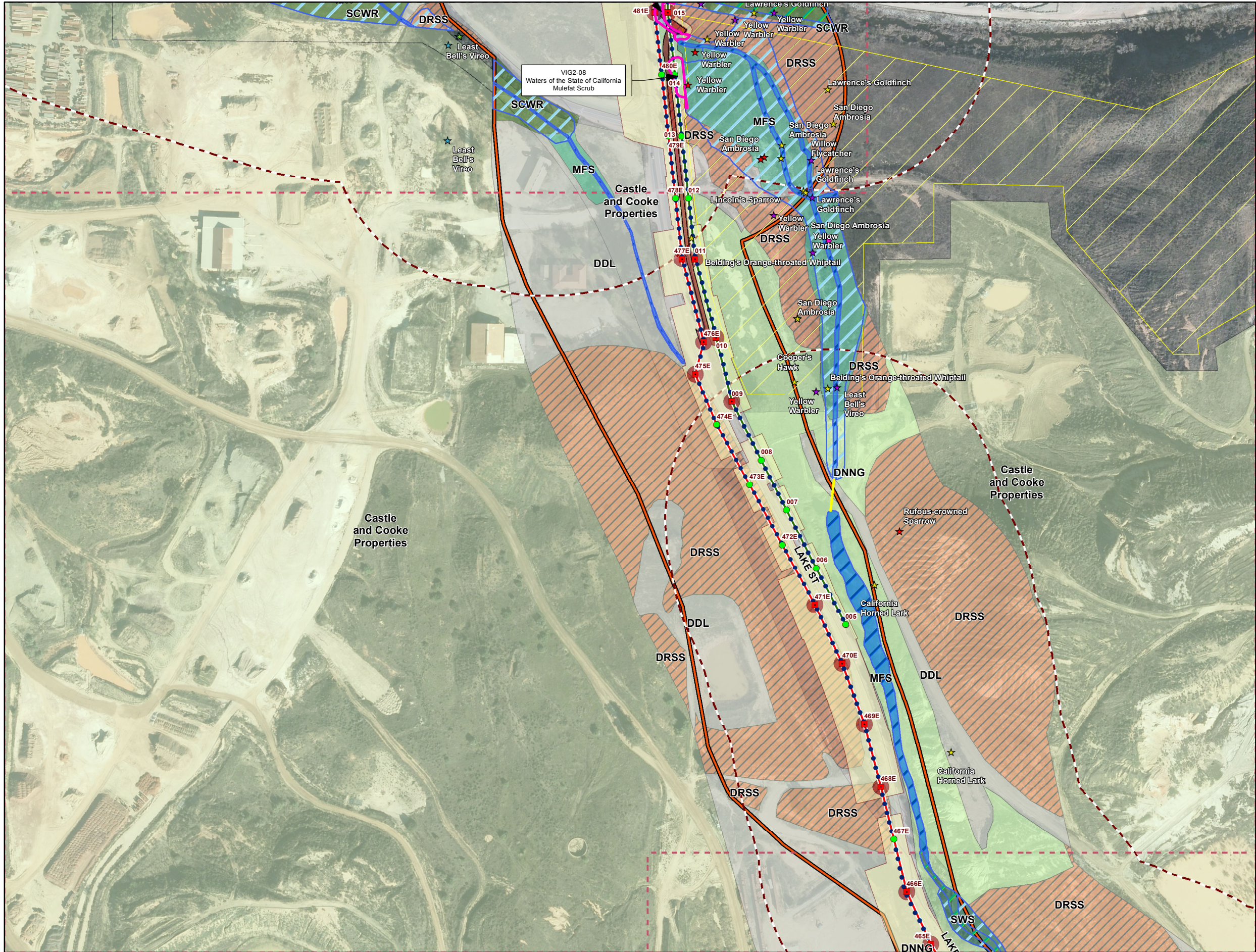
amec

1 inch = 300 feet

0 150 300 Feet

Appendix A1 - Biological Resources
MSHCP Biological Resources Technical Report
for the Valley-Ivyglen Subtransmission Line Project
Phase 2
Riverside County, California

Map 7



Legend

Project Features*

Pole Type

- Guy
- LWSP (Guy Stub)
- Hybrid
- LWSP
- Riser
- Shoofly
- TSP
- Wood
- Vault
- Guard Structures
- Access Roads
- Material Yards
- Construction Avoidance Area (1 March - 31 August)
- Conserved Lands (MSHCP)
- CPUC Buffer (May 2013)
- Castle & Cooke Properties
- Riverside/Corona Resource Conservation District
- Map Page Indicator

Subtransmission Route

- Segment 4
- Segment 5
- Segment 6
- Segment 7
- Fogarty-Ivyglen
- Shoofly
- Underground Portion (Segment 8)

Fiber Optic Line

- Overhead Fiber Optic Cable
- Underground Fiber Optic in Existing Conduit
- Underground Fiber Optic in New Conduit

Drainage Control Features (90%)

- Culvert
- Gabion
- Rip-Rap

Impact Areas*

- Permanent
- Temporary
- Tree Trimming Areas

Sensitive Species Data

- Sensitive Species (2014)
- Sensitive Species (2013)
- Sensitive Species (2012)
- Sensitive Species (2011)
- Sensitive Species (2010)
- Sensitive Species (2009)
- Sensitive Species (2008)
- Sensitive Species (2007)
- Sensitive Species (2006)
- CNDDB (2013)

Upland Vegetation Communities

- CC - Chamise Chaparral
- CLOW - Coast Live Oak Woodland
- RSS - Riverside Sage Scrub
- DCC - Disturbed Chamise Chaparral
- DRSS - Disturbed Riverside Sage Scrub
- DDL - Residential/Urban/Exotic
- NNG - Non-native Grassland
- DNNG - Disturbed Non-native Grassland
- SWS-U - Upland Southern Willow Scrub

MSHCP Riparian/Riverine Vegetation Communities

- CAM - Cismontane Alkali Marsh
- DCAM - Disturbed Cismontane Alkali Marsh
- RAFS - Riverside Alluvial Fan Scrub
- DRAFS - Disturbed Riverside Alluvial Fan Scrub
- SWS - Southern Willow Scrub
- FWM - Coastal and Valley Fresh Water Marsh
- OW - Open Water
- SCWR - Southern Cottonwood/Willow Riparian Forest
- MFS - Mule Fat Scrub
- SARW - Southern Sycamore/Alder Riparian Woodland
- RS - Riparian Scrub
- Riverine

Potential Jurisdictional Waters (AMEC)

- Waters of the State of California
- Waters of the U.S. and Waters of the State of California
- Wetland
- Existing Culvert
- Impacted JD Features

*** Map Notes:**

- Project Features subject to change based on geotechnical investigations, final engineering, ongoing coordination with the resource agencies, and field assessments conducted prior to construction
- Map Current as of 11/7/2014

amec

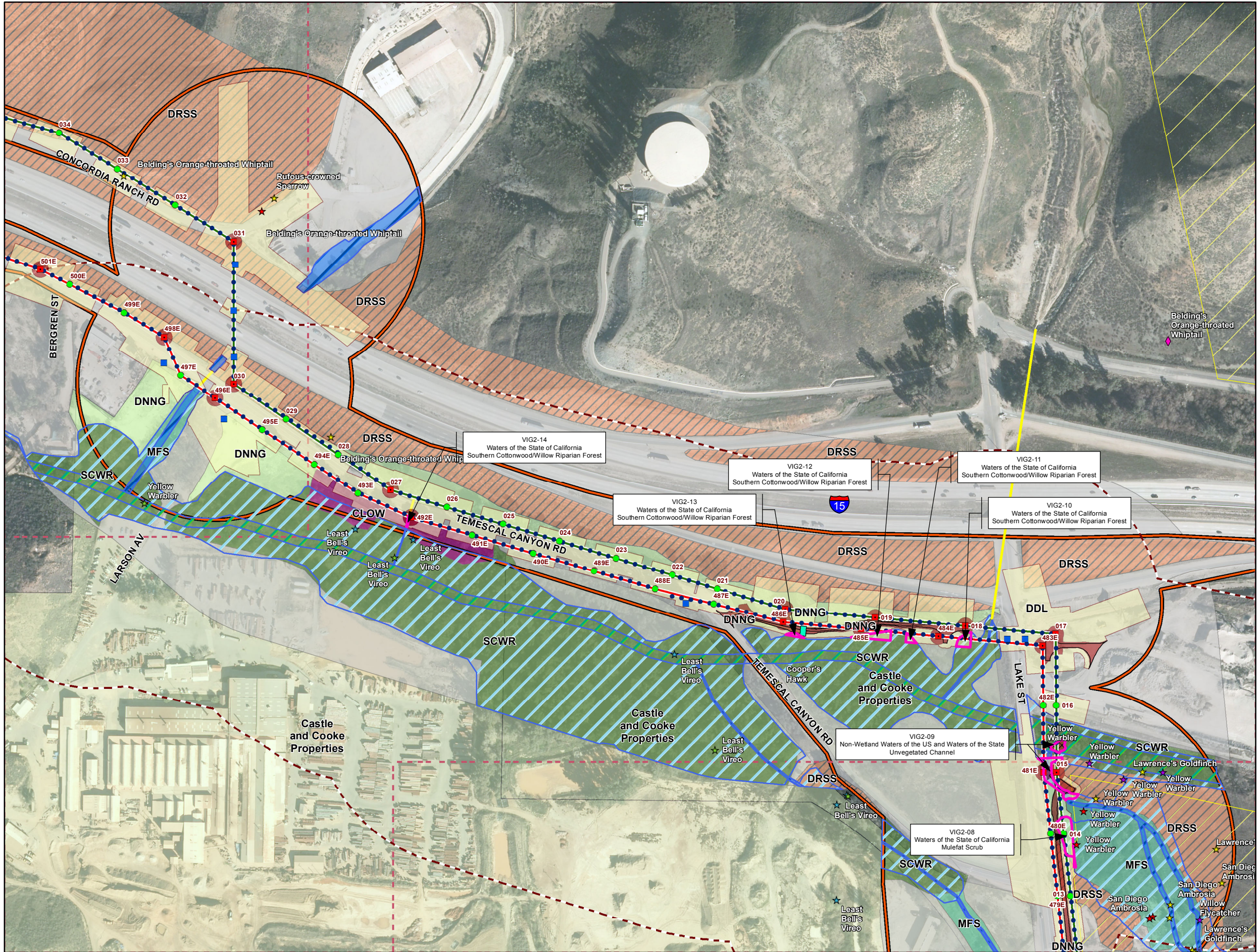
1 inch = 300 feet

0 150 300 Feet

N

Appendix A1 - Biological Resources
MSHCP Biological Resources Technical Report
for the Valley-Ivyglen Subtransmission Line Project
Phase 2
Riverside County, California

Map 8



Legend

Project Features*

Pole Type

- Guy
- LWSP (Guy Stub)
- Hybrid
- LWSP
- Riser
- Shoofly
- TSP
- Wood
- Vault
- Guard Structures
- Access Roads
- Material Yards

Subtransmission Route

- Segment 4
- Segment 5
- Segment 6
- Segment 7
- Fogarty-Ivyglen
- Shoofly
- Underground Portion (Segment 8)

Fiber Optic Line

- Overhead Fiber Optic Cable
- Underground Fiber Optic in Existing Conduit
- Underground Fiber Optic in New Conduit

Drainage Control Features (90%)

- Culvert
- Gabion
- Rip-Rap

Impact Areas*

- Permanent
- Temporary
- Tree Trimming Areas

Sensitive Species Data

- Sensitive Species (2014)
- Sensitive Species (2013)
- Sensitive Species (2012)
- Sensitive Species (2011)
- Sensitive Species (2010)
- Sensitive Species (2009)
- Sensitive Species (2008)
- Sensitive Species (2007)
- Sensitive Species (2006)
- CNDD (2013)

Upland Vegetation Communities

- CC - Chamise Chaparral
- CLOW - Coast Live Oak Woodland
- RSS - Riverside Sage Scrub
- DCC - Disturbed Chamise Chaparral
- DRSS - Disturbed Riverside Sage Scrub
- DDL - Residential/Urban/Exotic
- NNG - Non-native Grassland
- DNNG - Disturbed Non-native Grassland
- SWS-U - Upland Southern Willow Scrub

MSHCP Riparian/Riverine Vegetation Communities

- CAM - Cismontane Alkali Marsh
- DCAM - Disturbed Cismontane Alkali Marsh
- RAFS - Riverside Alluvial Fan Scrub
- DRAFS - Disturbed Riverside Alluvial Fan Scrub
- SWS - Southern Willow Scrub
- FWM - Coastal and Valley Fresh Water Marsh
- OW - Open Water
- SCWR - Southern Cottonwood/Willow Riparian Forest
- MFS - Mule Fat Scrub
- SARW - Southern Sycamore/Alder Riparian Woodland
- RS - Riparian Scrub
- Riverine

Potential Jurisdictional Waters (AMEC)

- Waters of the State of California
- Waters of the U.S. and Waters of the State of California
- Wetland
- Existing Culvert
- Impacted JD Features

*** Map Notes:**

- Project Features subject to change based on geotechnical investigations, final engineering, ongoing coordination with the resource agencies, and field assessments conducted prior to construction
- Map Current as of 11/7/2014

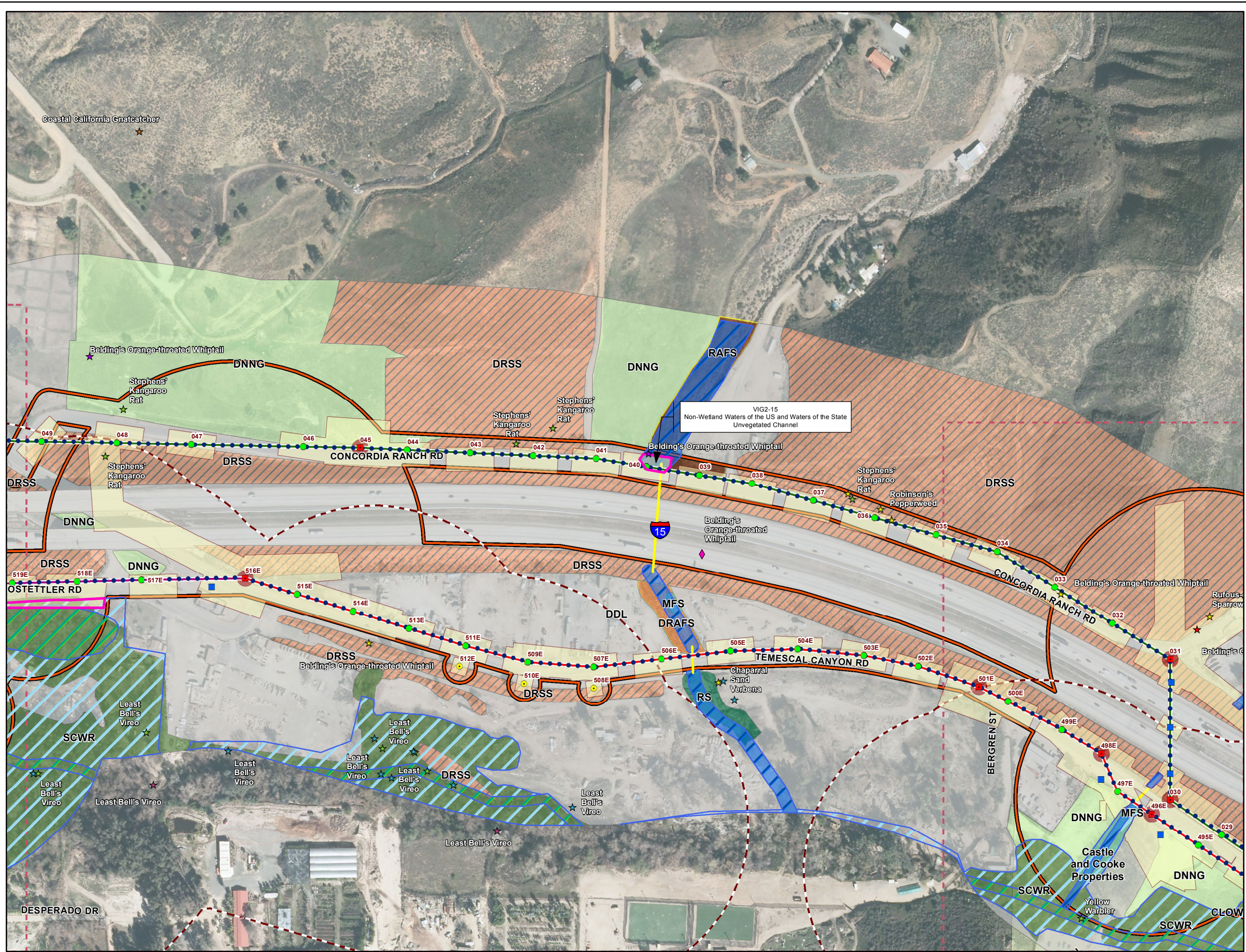
amec

1 inch = 300 feet

0 150 300 Feet

Appendix A1 - Biological Resources
MSHCP Biological Resources Technical Report
for the Valley-Ivyglen Subtransmission Line Project
Phase 2
Riverside County, California

Map 9



Legend

Project Features*

Pole Type

- Guy
- LWSP (Guy Stub)
- Hybrid
- LWSP
- Riser
- Shoofly
- TSP
- Wood
- Vault
- Guard Structures
- Access Roads
- Material Yards
- Construction Avoidance Area (1 March - 31 August)
- Conserved Lands (MSHCP)
- CPUC Buffer (May 2013)
- Castle & Cooke Properties
- Riverside/Corona Resource Conservation District
- Map Page Indicator

Subtransmission Route

- Segment 4
- Segment 5
- Segment 6
- Segment 7
- Fogarty-Ivyglen
- Shoofly
- Underground Portion (Segment 8)

Fiber Optic Line

- Overhead Fiber Optic Cable
- Underground Fiber Optic in Existing Conduit
- Underground Fiber Optic in New Conduit

Drainage Control Features (90%)

- Culvert
- Gabion
- Rip-Rap

Impact Areas*

- Permanent
- Temporary
- Tree Trimming Areas

Sensitive Species Data

- Sensitive Species (2014)
- Sensitive Species (2013)
- Sensitive Species (2012)
- Sensitive Species (2011)
- Sensitive Species (2010)
- Sensitive Species (2009)
- Sensitive Species (2008)
- Sensitive Species (2007)
- Sensitive Species (2006)
- CNDDB (2013)

Upland Vegetation Communities

- CC - Chamise Chaparral
- CLOW - Coast Live Oak Woodland
- RSS - Riversidean Sage Scrub
- DCC - Disturbed Chamise Chaparral
- DRSS - Disturbed Riversidean Sage Scrub
- DDL - Residential/Urban/Exotic
- NNG - Non-native Grassland
- DNNG - Disturbed Non-native Grassland
- SWS-U - Upland Southern Willow Scrub

MSHCP Riparian/Riverine Vegetation Communities

- CAM - Cismontane Alkali Marsh
- DCAM - Disturbed Cismontane Alkali Marsh
- RAFA - Riversidean Alluvial Fan Scrub
- DRAFA - Disturbed Riversidean Alluvial Fan Scrub
- SWS - Southern Willow Scrub
- FWM - Coastal and Valley Fresh Water Marsh
- OW - Open Water
- SCWR - Southern Cottonwood/Willow Riparian Forest
- MFS - Mule Fat Scrub
- SARW - Southern Sycamore/Alder Riparian Woodland
- RS - Riparian Scrub
- Riverine

Potential Jurisdictional Waters (AMEC)

- Waters of the State of California
- Waters of the U.S. and Waters of the State of California
- Wetland
- Existing Culvert
- Impacted JD Features

*** Map Notes:**

- Project Features subject to change based on geotechnical investigations, final engineering, ongoing coordination with the resource agencies, and field assessments conducted prior to construction
- Map Current as of 11/7/2014

Scale: 1 inch = 300 feet

North Arrow: N

amec

Appendix A1 - Biological Resources

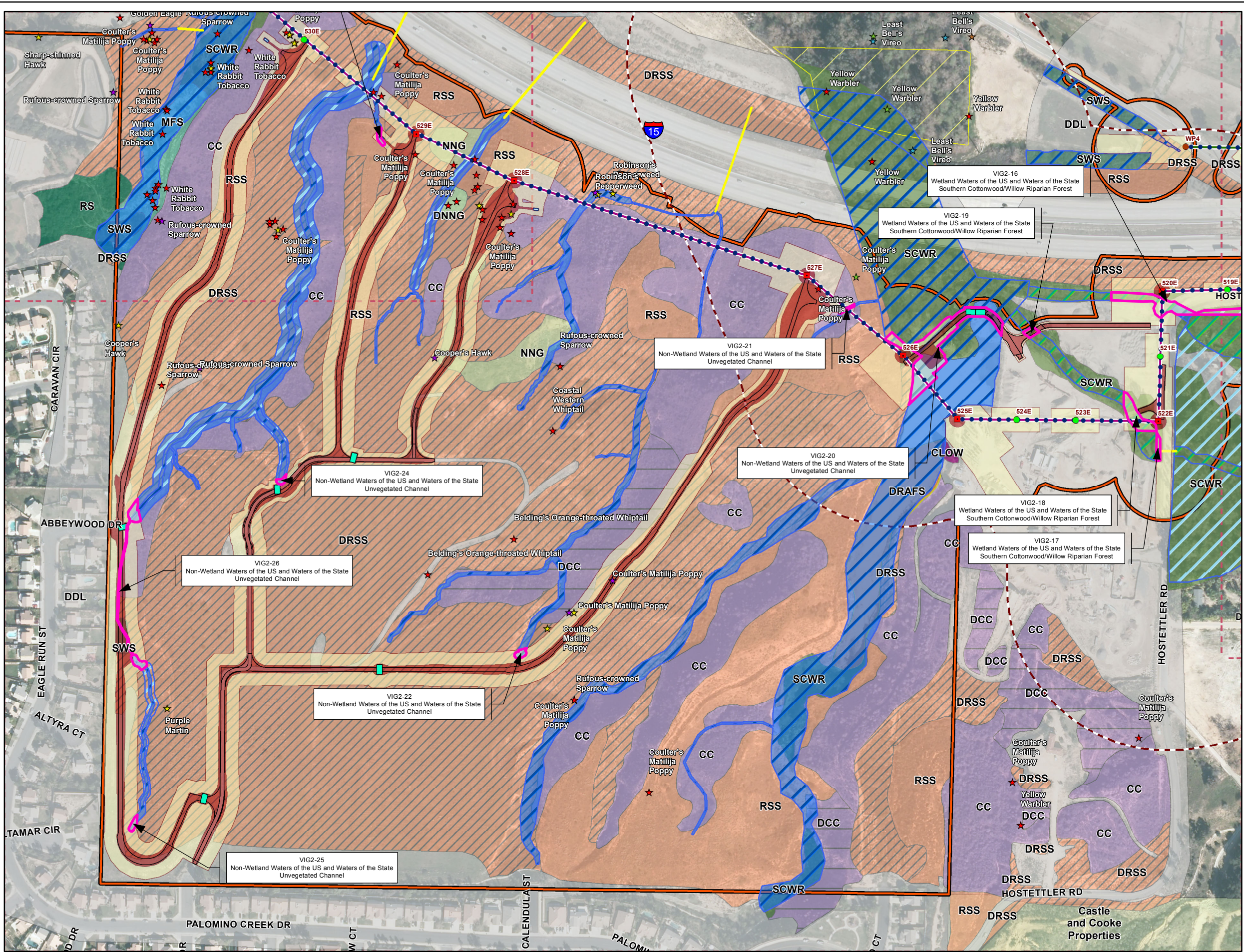
MSHCP Biological Resources Technical Report

for the Valley-Ivyglen Subtransmission Line Project

Phase 2

Riverside County, California

Map 10



Legend

Project Features*

Pole Type

- Guy
- LWSP (Guy Stub)
- Hybrid
- LWSP
- Riser
- Shoofly
- TSP
- Wood
- Vault
- Guard Structures
- Access Roads
- Material Yards
- Construction Avoidance Area (1 March - 31 August)
- Conserved Lands (MSHCP)
- CPUC Buffer (May 2013)
- Castle & Cooke Properties
- Riverside/Corona Resource Conservation District
- Map Page Indicator

Subtransmission Route

- Segment 4
- Segment 5
- Segment 6
- Segment 7
- Fogarty-Ivyglen
- Shoofly
- Underground Portion (Segment 8)

Fiber Optic Line

- Overhead Fiber Optic Cable
- Underground Fiber Optic in Existing Conduit
- Underground Fiber Optic in New Conduit

Drainage Control Features (90%)

- Culvert
- Gabion
- Rip-Rap

Impact Areas*

- Permanent
- Temporary
- Tree Trimming Areas

Sensitive Species Data

- Sensitive Species (2014)
- Sensitive Species (2013)
- Sensitive Species (2012)
- Sensitive Species (2011)
- Sensitive Species (2010)
- Sensitive Species (2009)
- Sensitive Species (2008)
- Sensitive Species (2007)
- Sensitive Species (2006)
- CNDDB (2013)

Upland Vegetation Communities

- CC - Chamise Chaparral
- CLOW - Coast Live Oak Woodland
- RSS - Riverside Sage Scrub
- DCC - Disturbed Chamise Chaparral
- DRSS - Disturbed Riverside Sage Scrub
- DDL - Residential/Urban/Exotic
- NNG - Non-native Grassland
- DNNG - Disturbed Non-native Grassland
- SWS-U - Upland Southern Willow Scrub

MSHCP Riparian/Riverine Vegetation Communities

- CAM - Cismontane Alkali Marsh
- DCAM - Disturbed Cismontane Alkali Marsh
- RAFA - Riverside Alluvial Fan Scrub
- DRAFA - Disturbed Riverside Alluvial Fan Scrub
- SWS - Southern Willow Scrub
- FWM - Coastal and Valley Fresh Water Marsh
- OW - Open Water
- SCWR - Southern Cottonwood/Willow Riparian Forest
- MFS - Mule Fat Scrub
- SARW - Southern Sycamore/Alder Riparian Woodland
- RS - Riparian Scrub
- Riverine

Potential Jurisdictional Waters (AMEC)

- Waters of the State of California
- Waters of the U.S. and Waters of the State of California
- Wetland
- Existing Culvert
- Impacted JD Features

*** Map Notes:**

- Project Features subject to change based on geotechnical investigations, final engineering, ongoing coordination with the resource agencies, and field assessments conducted prior to construction
- Map Current as of 11/7/2014

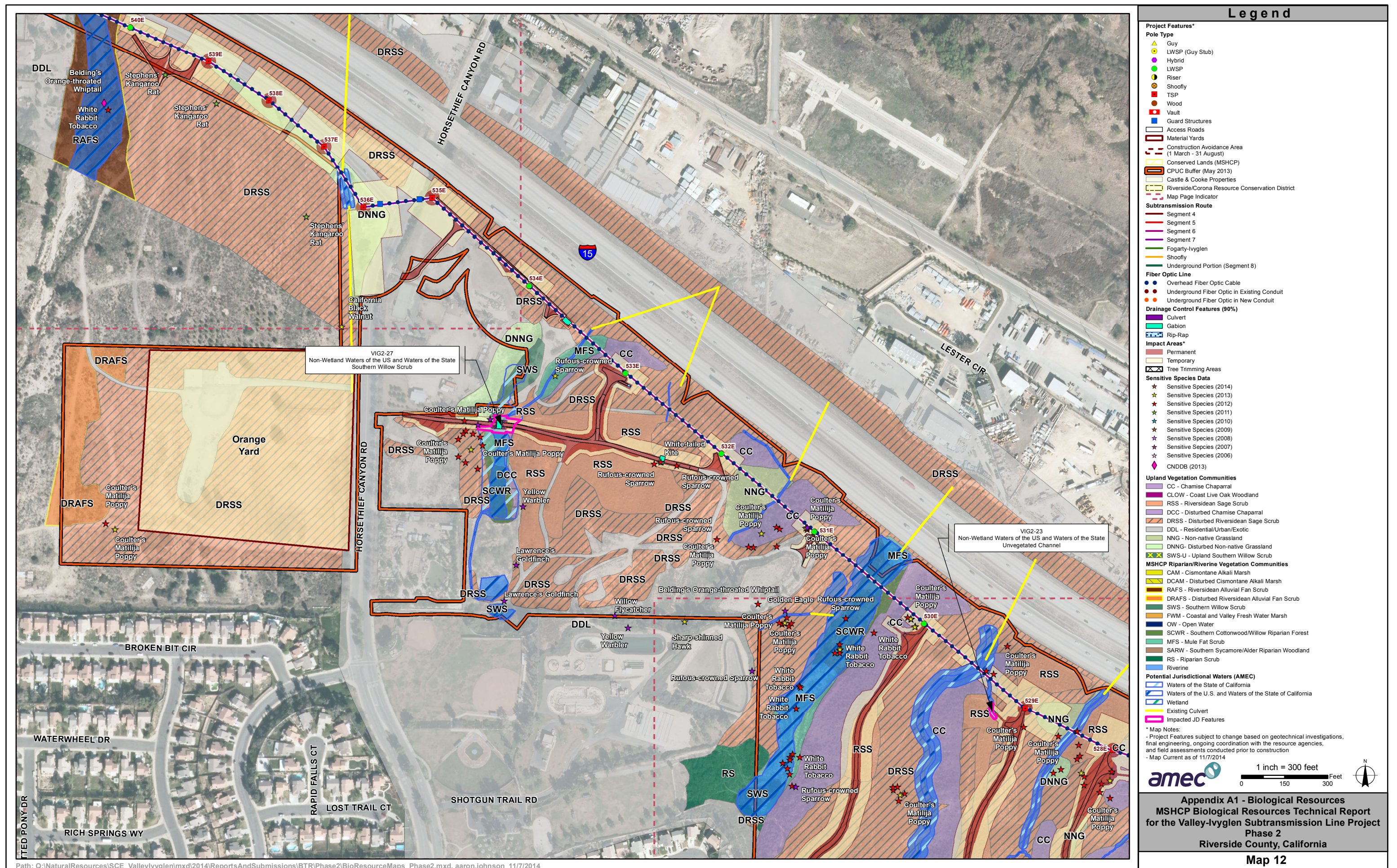
amec

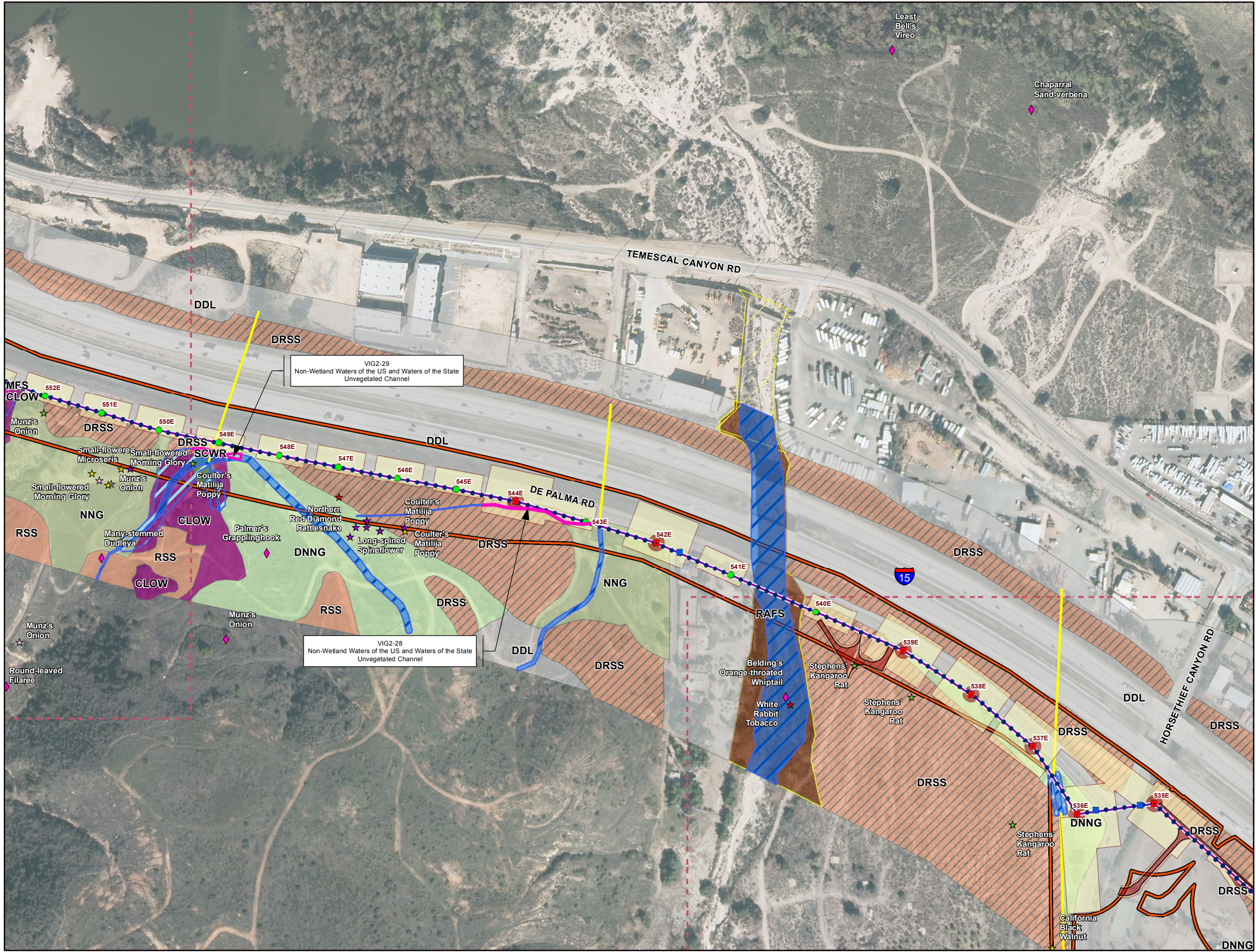
1 inch = 300 feet

0 150 300 Feet

Appendix A1 - Biological Resources
MSHCP Biological Resources Technical Report
for the Valley-Ivyglen Subtransmission Line Project
Phase 2
Riverside County, California

Map 11





Legend

Project Features*

Pole Type

- Guy
- LWSP (Guy Stub)
- Hybrid
- LWSP
- Riser
- Shoofly
- TSP
- Wood
- Vault
- Guard Structures
- Access Roads
- Material Yards

Subtransmission Route

- Segment 4
- Segment 5
- Segment 6
- Segment 7
- Fogarty-Ivyglen
- Shoofly
- Underground Portion (Segment 8)

Fiber Optic Line

- Overhead Fiber Optic Cable
- Underground Fiber Optic in Existing Conduit
- Underground Fiber Optic in New Conduit

Drainage Control Features (90%)

- Culvert
- Gabion
- Rip-Rap

Impact Areas*

- Permanent
- Temporary
- Tree Trimming Areas

Sensitive Species Data

- Sensitive Species (2014)
- Sensitive Species (2013)
- Sensitive Species (2012)
- Sensitive Species (2011)
- Sensitive Species (2010)
- Sensitive Species (2009)
- Sensitive Species (2008)
- Sensitive Species (2007)
- Sensitive Species (2006)
- CNDDB (2013)

Upland Vegetation Communities

- CC - Chamise Chaparral
- CLOW - Coast Live Oak Woodland
- RSS - Riversidean Sage Scrub
- DCC - Disturbed Chamise Chaparral
- DRSS - Disturbed Riversidean Sage Scrub
- DDL - Residential/Urban/Exotic
- NNG - Non-native Grassland
- DNNG - Disturbed Non-native Grassland
- SWS-U - Upland Southern Willow Scrub

MSHCP Riparian/Riverine Vegetation Communities

- CAM - Cismontane Alkali Marsh
- DCAM - Disturbed Cismontane Alkali Marsh
- RAFS - Riversidean Alluvial Fan Scrub
- DRAFS - Disturbed Riversidean Alluvial Fan Scrub
- SWS - Southern Willow Scrub
- FWM - Coastal and Valley Fresh Water Marsh
- OW - Open Water
- SCWR - Southern Cottonwood/Willow Riparian Forest
- MFS - Mule Fat Scrub
- SARW - Southern Sycamore/Alder Riparian Woodland
- RS - Riparian Scrub
- Riverine

Potential Jurisdictional Waters (AMEC)

- Waters of the State of California
- Waters of the U.S. and Waters of the State of California
- Wetland
- Existing Culvert
- Impacted JD Features

*** Map Notes:**

- Project Features subject to change based on geotechnical investigations, final engineering, ongoing coordination with the resource agencies, and field assessments conducted prior to construction
- Map Current as of 11/7/2014

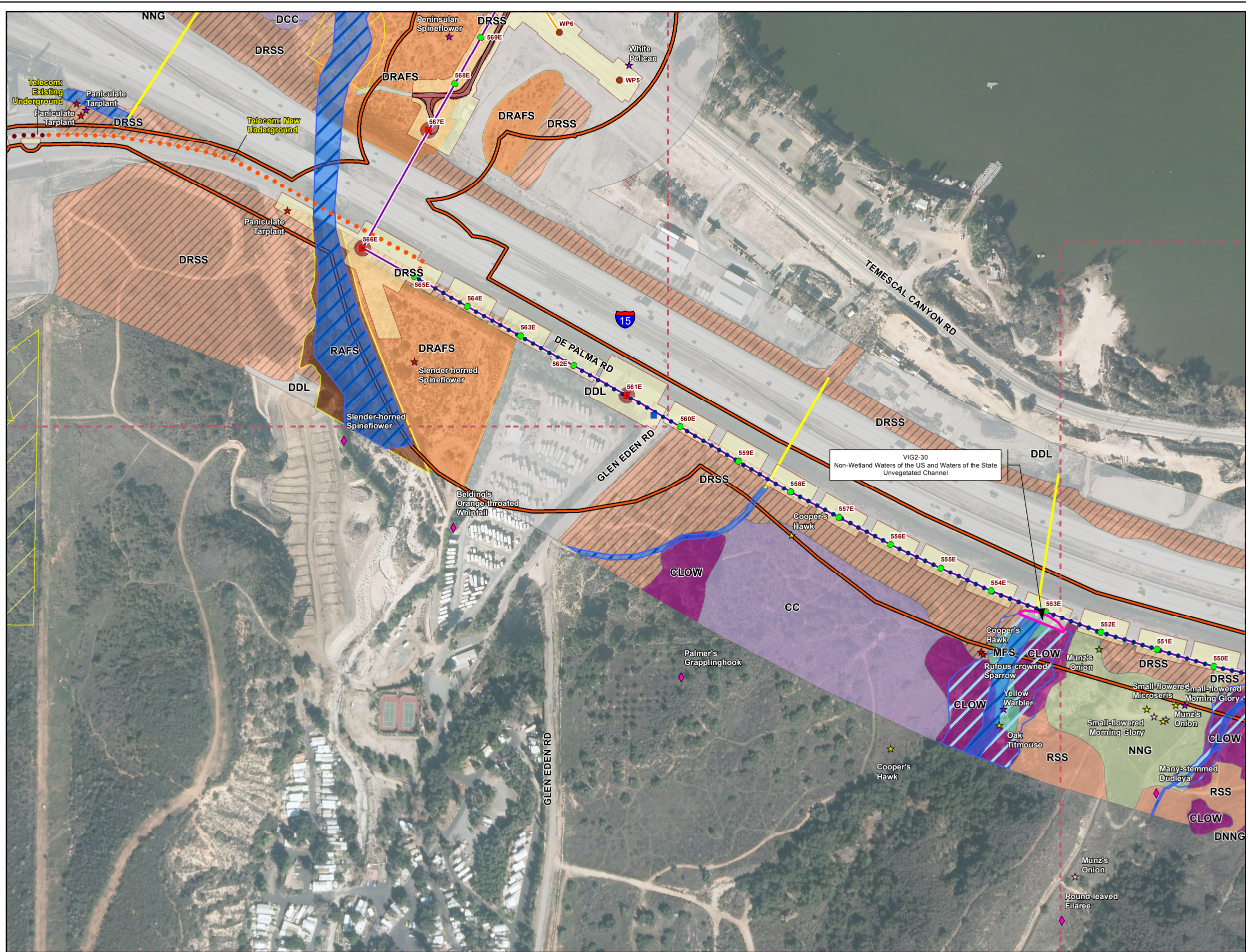
amec

1 inch = 300 feet

0 150 300 Feet

Appendix A1 - Biological Resources
MSHCP Biological Resources Technical Report
for the Valley-Ivyglen Subtransmission Line Project
Phase 2
Riverside County, California

Map 13



Legend

Project Features*

Pole Type

- Guy
- LWSP (Guy Stub)
- Hybrid
- LWSP
- Riser
- Shoofly
- TSP
- Wood
- Vault
- Guard Structures
- Access Roads
- Material Yards
- Construction Avoidance Area (1 March - 31 August)
- Conserved Lands (MSHCP)
- CPUC Buffer (May 2013)
- Castle & Cooke Properties
- Riverside/Corona Resource Conservation District
- Map Page Indicator

Subtransmission Route

- Segment 4
- Segment 5
- Segment 6
- Segment 7
- Fogarty-Ivyglen
- Shoofly
- Underground Portion (Segment 8)

Fiber Optic Line

- Overhead Fiber Optic Cable
- Underground Fiber Optic in Existing Conduit
- Underground Fiber Optic in New Conduit

Drainage Control Features (90%)

- Culvert
- Gabion
- Rip-Rap

Impact Areas*

- Permanent
- Temporary
- Tree Trimming Areas

Sensitive Species Data

- Sensitive Species (2014)
- Sensitive Species (2013)
- Sensitive Species (2012)
- Sensitive Species (2011)
- Sensitive Species (2010)
- Sensitive Species (2009)
- Sensitive Species (2008)
- Sensitive Species (2007)
- Sensitive Species (2006)
- CNDDB (2013)

Upland Vegetation Communities

- CC - Chamise Chaparral
- CLOW - Coast Live Oak Woodland
- RSS - Riverside Sage Scrub
- DCC - Disturbed Chamise Chaparral
- DRSS - Disturbed Riverside Sage Scrub
- DDL - Residential/Urban/Exotic
- NNG - Non-native Grassland
- DNNG - Disturbed Non-native Grassland
- SWS-U - Upland Southern Willow Scrub

MSHCP Riparian/Riverine Vegetation Communities

- CAM - Cismontane Alkali Marsh
- DCAM - Disturbed Cismontane Alkali Marsh
- RAFS - Riverside Alluvial Fan Scrub
- DRAFS - Disturbed Riverside Alluvial Fan Scrub
- SWS - Southern Willow Scrub
- FWM - Coastal and Valley Fresh Water Marsh
- OW - Open Water
- SCWR - Southern Cottonwood/Willow Riparian Forest
- MFS - Mule Fat Scrub
- SARW - Southern Sycamore/Alder Riparian Woodland
- RS - Riparian Scrub
- Riverine

Potential Jurisdictional Waters (AMEC)

- Waters of the State of California
- Waters of the U.S. and Waters of the State of California
- Wetland
- Existing Culvert
- Impacted JD Features

*** Map Notes:**

- Project Features subject to change based on geotechnical investigations, final engineering, ongoing coordination with the resource agencies, and field assessments conducted prior to construction
- Map Current as of 11/7/2014

amec

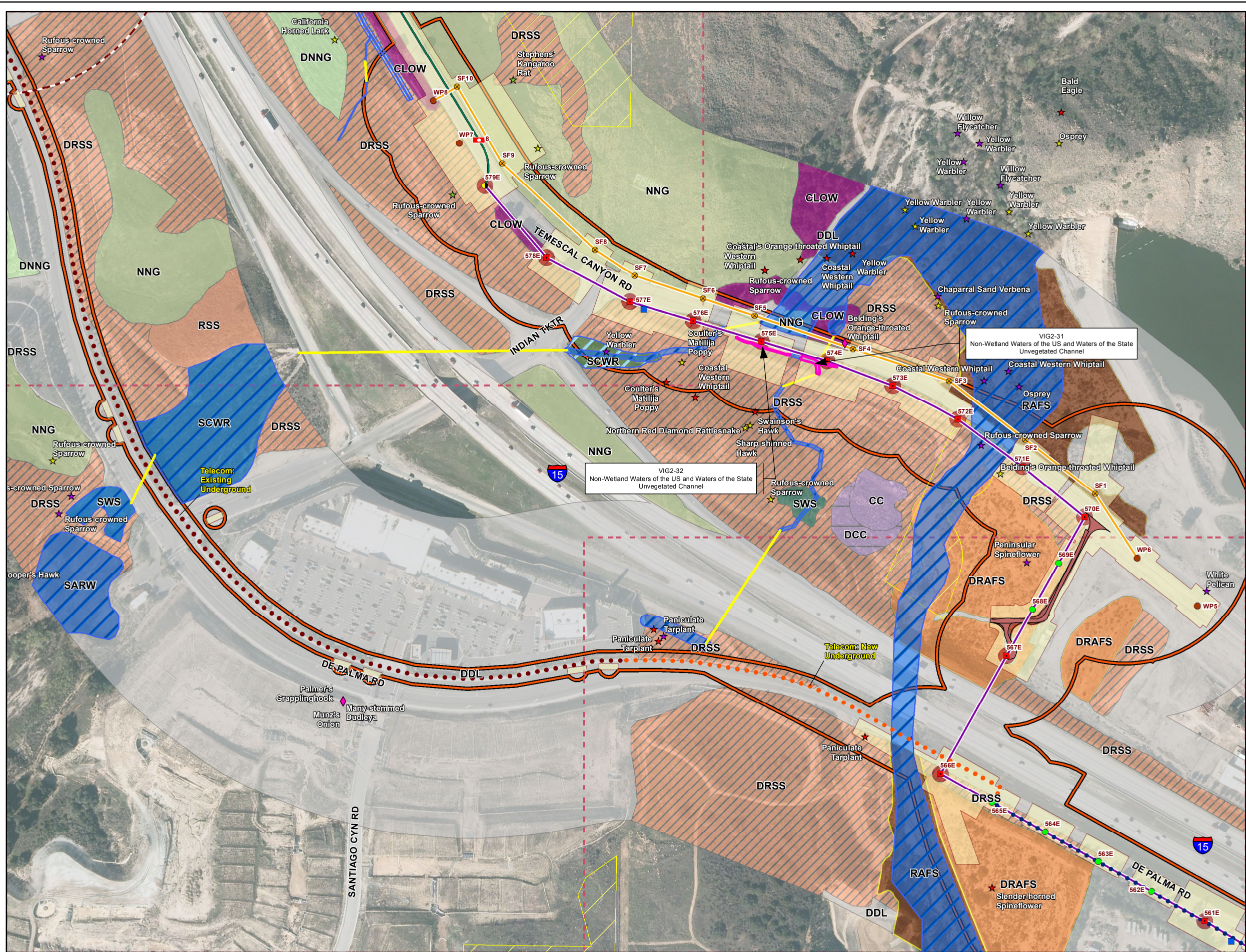
1 inch = 300 feet

0 150 300 Feet

N

Appendix A1 - Biological Resources
MSHCP Biological Resources Technical Report
for the Valley-Ivyglen Subtransmission Line Project
Phase 2
Riverside County, California

Map 14



Legend

Project Features*

Pole Type

- Guy
- LWSP (Guy Stub)
- Hybrid
- LWSP
- Riser
- Shoofly
- TSP
- Wood
- Vault
- Guard Structures
- Access Roads
- Material Yards

Subtransmission Route

- Segment 4
- Segment 5
- Segment 6
- Segment 7
- Fogarty-Ivyglen
- Shoofly
- Underground Portion (Segment 8)

Fiber Optic Line

- Overhead Fiber Optic Cable
- Underground Fiber Optic in Existing Conduit
- Underground Fiber Optic in New Conduit

Drainage Control Features (90%)

- Culvert
- Gabion
- Rip-Rap

Impact Areas*

- Permanent
- Temporary
- Tree Trimming Areas

Sensitive Species Data

- Sensitive Species (2014)
- Sensitive Species (2013)
- Sensitive Species (2012)
- Sensitive Species (2011)
- Sensitive Species (2010)
- Sensitive Species (2009)
- Sensitive Species (2008)
- Sensitive Species (2007)
- Sensitive Species (2006)
- CNDDB (2013)

Upland Vegetation Communities

- CC - Chamise Chaparral
- CLOW - Coast Live Oak Woodland
- RSS - Riversidean Sage Scrub
- DCC - Disturbed Chamise Chaparral
- DRSS - Disturbed Riversidean Sage Scrub
- DDL - Residential/Urban/Exotic
- NNG - Non-native Grassland
- DNNG - Disturbed Non-native Grassland
- SWS-U - Upland Southern Willow Scrub

MSHCP Riparian/Riverine Vegetation Communities

- CAM - Cismontane Alkali Marsh
- DCAM - Disturbed Cismontane Alkali Marsh
- RAFS - Riversidean Alluvial Fan Scrub
- DRAFS - Disturbed Riversidean Alluvial Fan Scrub
- SWS - Southern Willow Scrub
- FWM - Coastal and Valley Fresh Water Marsh
- OW - Open Water
- SCWR - Southern Cottonwood/Willow Riparian Forest
- MFS - Mule Fat Scrub
- SARW - Southern Sycamore/Alder Riparian Woodland
- RS - Riparian Scrub
- Riverine

Potential Jurisdictional Waters (AMEC)

- Waters of the State of California
- Waters of the U.S. and Waters of the State of California
- Wetland
- Existing Culvert
- Impacted JD Features

*** Map Notes:**

- Project Features subject to change based on geotechnical investigations, final engineering, ongoing coordination with the resource agencies, and field assessments conducted prior to construction
- Map Current as of 11/7/2014

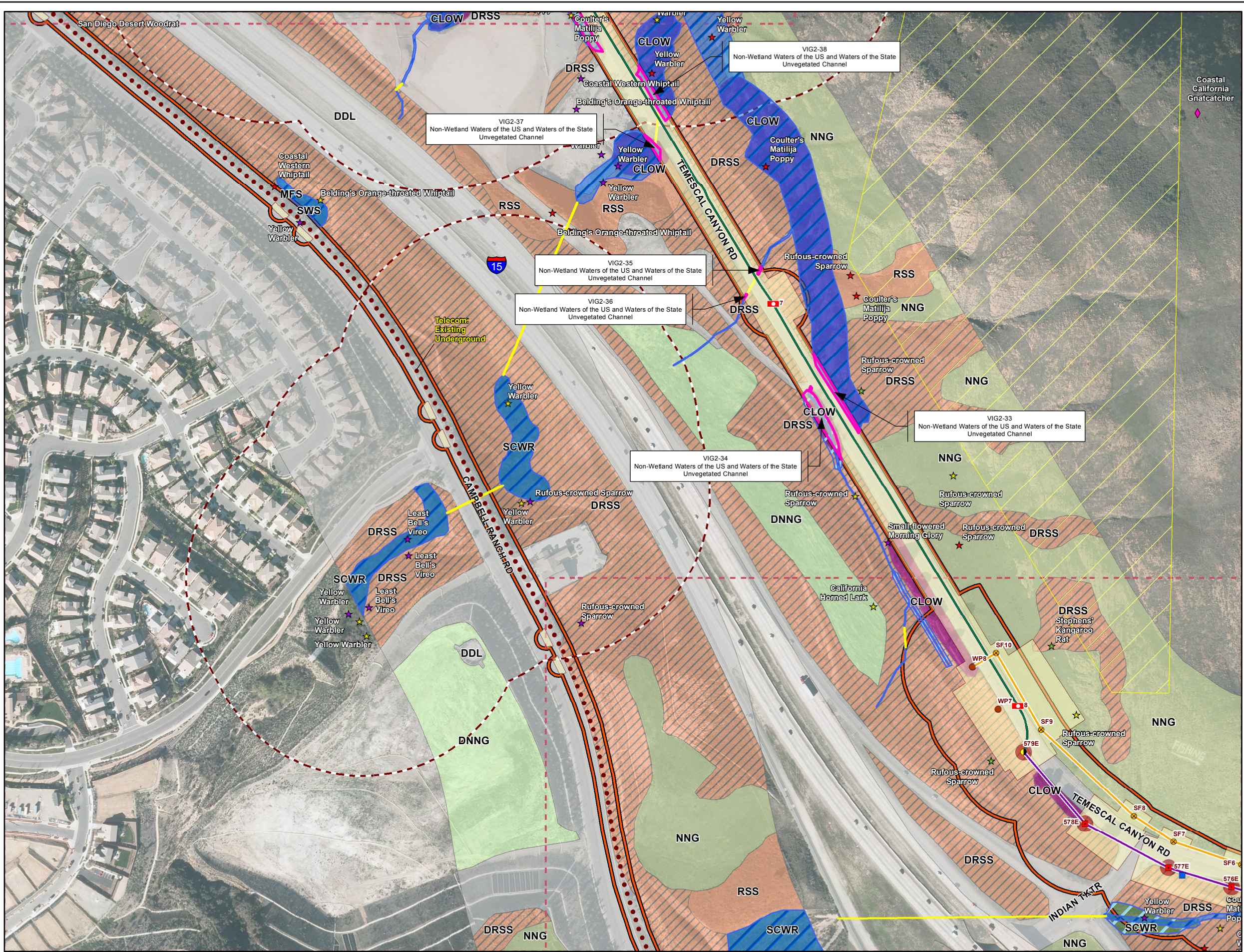
amec

1 inch = 300 feet

0 150 300 Feet

Appendix A1 - Biological Resources
MSHCP Biological Resources Technical Report
for the Valley-Ivyglen Subtransmission Line Project
Phase 2
Riverside County, California

Map 15



Legend

Project Features*

Pole Type

- Guy
- LWSP (Guy Stub)
- Hybrid
- LWSP
- Riser
- Shoofly
- TSP
- Wood
- Vault
- Guard Structures
- Access Roads
- Material Yards
- Construction Avoidance Area (1 March - 31 August)
- Conserved Lands (MSHCP)
- CPUC Buffer (May 2013)
- Castle & Cooke Properties
- Riverside/Corona Resource Conservation District
- Map Page Indicator

Subtransmission Route

- Segment 4
- Segment 5
- Segment 6
- Segment 7
- Fogarty-Ivyglen
- Shoofly
- Underground Portion (Segment 8)

Fiber Optic Line

- Overhead Fiber Optic Cable
- Underground Fiber Optic in Existing Conduit
- Underground Fiber Optic in New Conduit

Drainage Control Features (90%)

- Culvert
- Gabion
- Rip-Rap

Impact Areas*

- Permanent
- Temporary
- Tree Trimming Areas

Sensitive Species Data

- Sensitive Species (2014)
- Sensitive Species (2013)
- Sensitive Species (2012)
- Sensitive Species (2011)
- Sensitive Species (2010)
- Sensitive Species (2009)
- Sensitive Species (2008)
- Sensitive Species (2007)
- Sensitive Species (2006)
- CNDDB (2013)

Upland Vegetation Communities

- CC - Chamise Chaparral
- CLOW - Coast Live Oak Woodland
- RSS - Riversidean Sage Scrub
- DCC - Disturbed Chamise Chaparral
- DRSS - Disturbed Riversidean Sage Scrub
- DDL - Residential/Urban/Exotic
- NNG - Non-native Grassland
- DNNG - Disturbed Non-native Grassland
- SWS-U - Upland Southern Willow Scrub

MSHCP Riparian/Riverine Vegetation Communities

- CAM - Cismontane Alkali Marsh
- DCAM - Disturbed Cismontane Alkali Marsh
- RAFS - Riversidean Alluvial Fan Scrub
- DRAFS - Disturbed Riversidean Alluvial Fan Scrub
- SWS - Southern Willow Scrub
- FWM - Coastal and Valley Fresh Water Marsh
- OW - Open Water
- SCWR - Southern Cottonwood/Willow Riparian Forest
- MFS - Mule Fat Scrub
- SARW - Southern Sycamore/Alder Riparian Woodland
- RS - Riparian Scrub
- Riverine

Potential Jurisdictional Waters (AMEC)

- Waters of the State of California
- Waters of the U.S. and Waters of the State of California
- Wetland
- Existing Culvert
- Impacted JD Features

*** Map Notes:**

- Project Features subject to change based on geotechnical investigations, final engineering, ongoing coordination with the resource agencies, and field assessments conducted prior to construction
- Map Current as of 11/7/2014

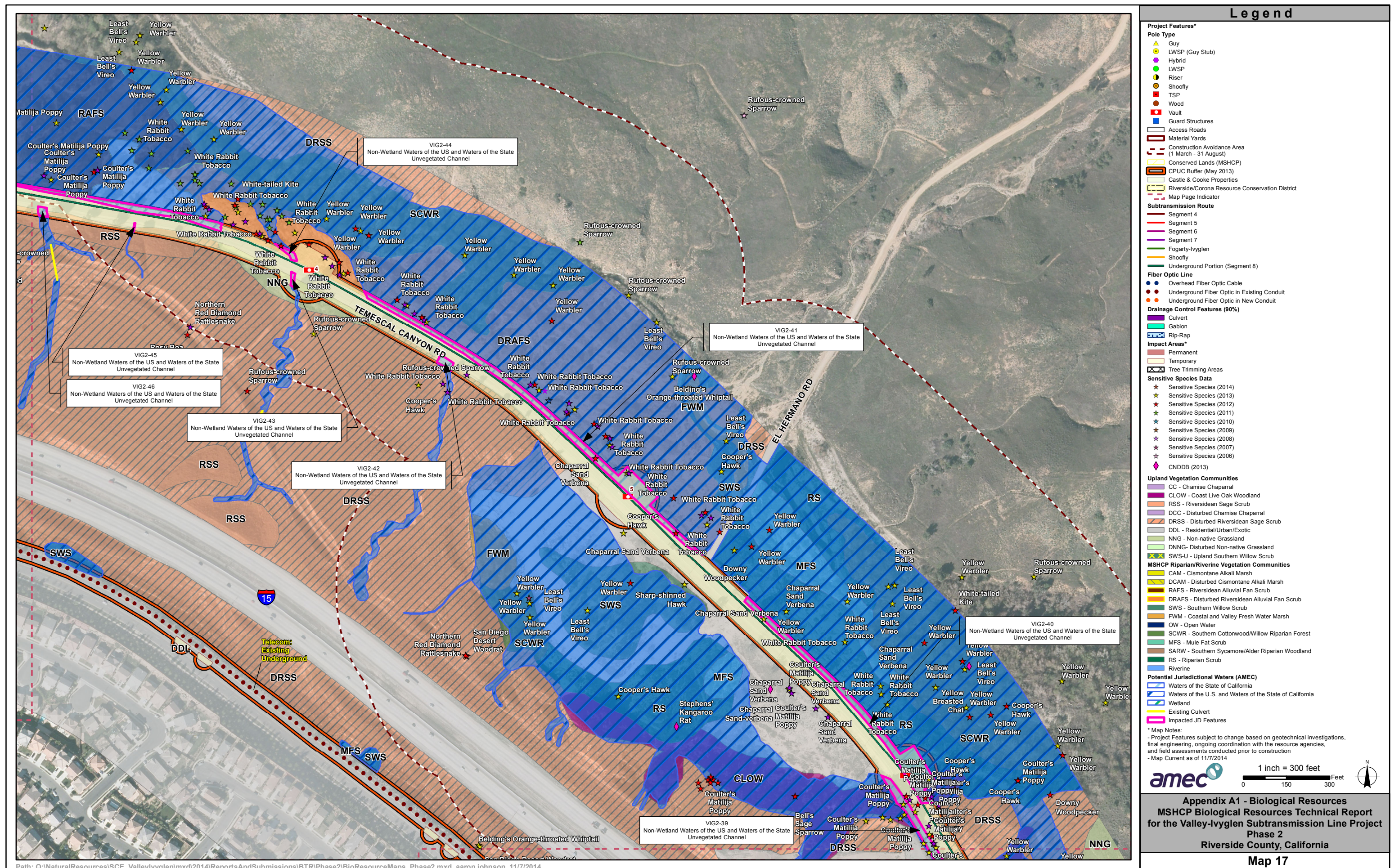
amec

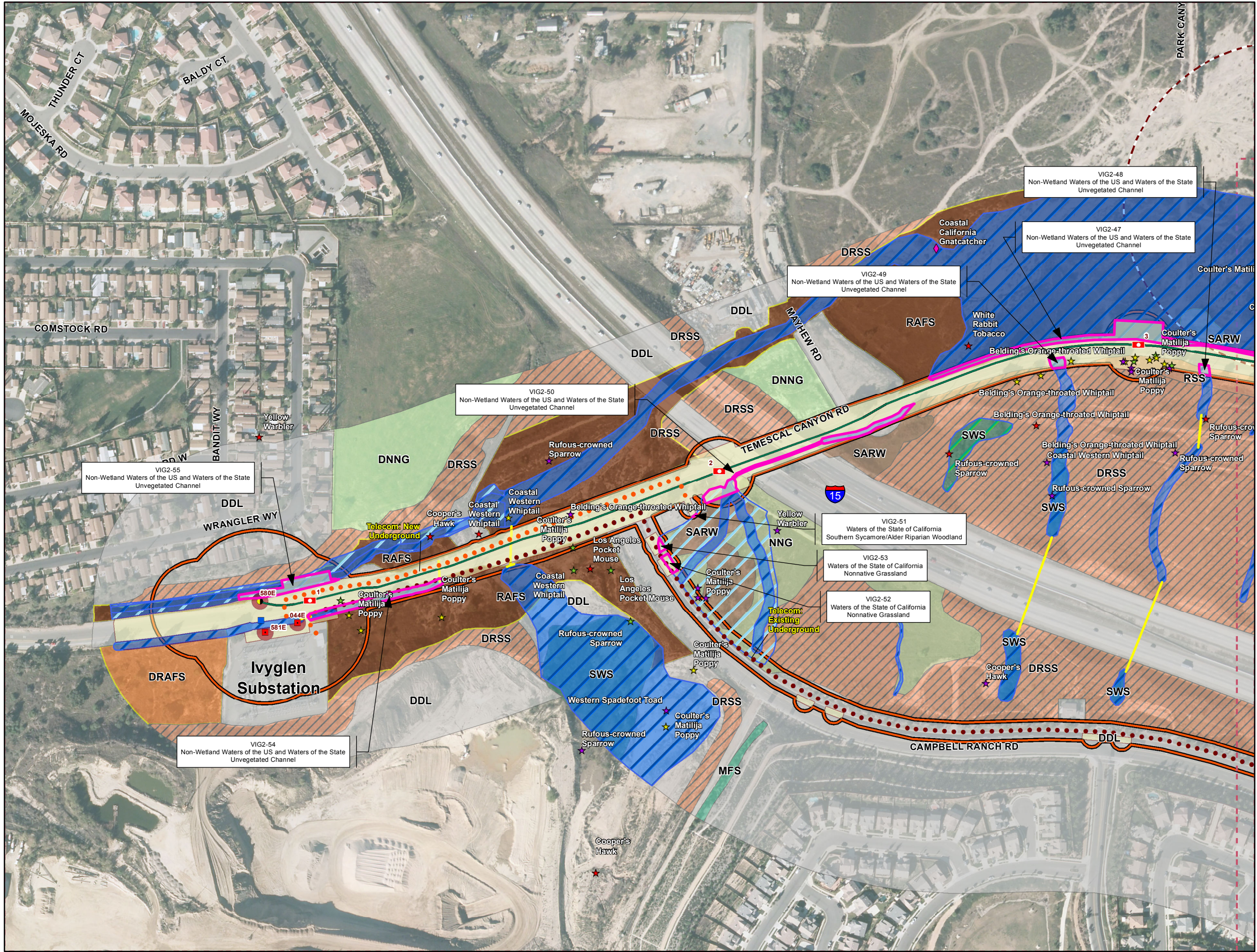
1 inch = 300 feet

0 150 300 Feet

Appendix A1 - Biological Resources
MSHCP Biological Resources Technical Report
for the Valley-Ivyglen Subtransmission Line Project
Phase 2
Riverside County, California

Map 16





Legend

Project Features*

Pole Type

- Guy
- LWSP (Guy Stub)
- Hybrid
- LWSP
- Riser
- Shoofly
- TSP
- Wood
- Vault
- Guard Structures
- Access Roads
- Material Yards
- Construction Avoidance Area (1 March - 31 August)
- Conserved Lands (MSHCP)
- CPUC Buffer (May 2013)
- Castle & Cooke Properties
- Riverside/Corona Resource Conservation District
- Map Page Indicator

Subtransmission Route

- Segment 4
- Segment 5
- Segment 6
- Segment 7
- Fogarty-Ivyglen
- Shoofly
- Underground Portion (Segment 8)

Fiber Optic Line

- Overhead Fiber Optic Cable
- Underground Fiber Optic in Existing Conduit
- Underground Fiber Optic in New Conduit

Drainage Control Features (90%)

- Culvert
- Gabion
- Rip-Rap

Impact Areas*

- Permanent
- Temporary
- Tree Trimming Areas

Sensitive Species Data

- Sensitive Species (2014)
- Sensitive Species (2013)
- Sensitive Species (2012)
- Sensitive Species (2011)
- Sensitive Species (2010)
- Sensitive Species (2009)
- Sensitive Species (2008)
- Sensitive Species (2007)
- Sensitive Species (2006)
- CNDDB (2013)

Upland Vegetation Communities

- CC - Chamise Chaparral
- CLOW - Coast Live Oak Woodland
- RSS - Riverside Sage Scrub
- DCC - Disturbed Chamise Chaparral
- DRSS - Disturbed Riverside Sage Scrub
- DDL - Residential/Urban/Exotic
- NNG - Non-native Grassland
- DNNG - Disturbed Non-native Grassland
- SWS-U - Upland Southern Willow Scrub

MSHCP Riparian/Riverine Vegetation Communities

- CAM - Cismontane Alkali Marsh
- DCAM - Disturbed Cismontane Alkali Marsh
- RAFA - Riverside Alluvial Fan Scrub
- DRAFA - Disturbed Riverside Alluvial Fan Scrub
- SWS - Southern Willow Scrub
- FWM - Coastal and Valley Fresh Water Marsh
- OW - Open Water
- SCWR - Southern Cottonwood/Willow Riparian Forest
- MFS - Mule Fat Scrub
- SARW - Southern Sycamore/Alder Riparian Woodland
- RS - Riparian Scrub
- Riverine

Potential Jurisdictional Waters (AMEC)

- Waters of the State of California
- Waters of the U.S. and Waters of the State of California
- Wetland
- Existing Culvert
- Impacted JD Features

*** Map Notes:**

- Project Features subject to change based on geotechnical investigations, final engineering, ongoing coordination with the resource agencies, and field assessments conducted prior to construction
- Map Current as of 11/7/2014

amec

1 inch = 300 feet

0 150 300 Feet

Appendix A1 - Biological Resources
MSHCP Biological Resources Technical Report
for the Valley-Ivyglen Subtransmission Line Project
Phase 2
Riverside County, California

Map 18