



### Legend

**Subtransmission Route**

- Segment 4
- Segment 5
- Segment 6
- Segment 7
- Shoofly
- Underground Portion (Segment 8)
- Fiber Optic Line
- Conserved Lands (MSHCP)
- Map Page Indicator

**Riverside County Habitat Mapping**

- Non-native Grassland
- Riversidean Alluvial Fan Sage Scrub
- Disturbed Riversidean Alluvial Fan Sage Scrub

**Upland Vegetation Communities**

- CC - Chamise Chaparral
- CLOW - Coast Live Oak Woodland
- RSS - Riversidean Sage Scrub
- DCC - Disturbed Chamise Chaparral
- DRSS - Disturbed Riversidean Sage Scrub
- DDL - Residential/Urban/Exotic
- NNG - Non-native Grassland
- DNNG - Disturbed Non-native Grassland
- SWS-U - Upland Southern Willow Scrub

**MSHCP Riparian/Riverine Vegetation Communities**

- CAM - Cismontane Alkali Marsh
- DCAM - Disturbed Cismontane Alkali Marsh
- RAFA - Riversidean Alluvial Fan Scrub
- DRAFA - Disturbed Riversidean Alluvial Fan Scrub
- SWS - Southern Willow Scrub
- FWM - Coastal and Valley Fresh Water Marsh
- OW - Open Water
- SCWR - Southern Cottonwood/Willow Riparian Forest
- MFS - Mule Fat Scrub
- SARW - Southern Sycamore/Alder Riparian Woodland
- RS - Riparian Scrub

\* Map Notes:  
- Project Features subject to change based on geotechnical investigations, final engineering, ongoing coordination with the resource agencies, and field assessments conducted prior to construction  
- Map Current as of 11/19/2014

1 inch = 300 feet  
0 150 300 Feet

**Appendix I - County Habitat Mapping for  
Rough Step Analysis  
MSHCP Biological Resources Technical Report  
for the Valley-Ivyglen Subtransmission Line Project  
Phase 2  
Riverside County, California**

**Map 1**





Path: Q:\NaturalResources\SCE\_ValleyIvyglen\mxd\2014\ReportsAndSubmissions\BTR\Phase2\Appendix 1 CountyMapping.mxd, aaron.johnson 11/19/2014

### Legend

**Subtransmission Route**

- Segment 4
- Segment 5
- Segment 6
- Segment 7
- Shoofly
- Underground Portion (Segment 8)
- Fiber Optic Line
- Conserved Lands (MSHCP)
- Map Page Indicator

**Riverside County Habitat Mapping**

- Non-native Grassland
- Riversidean Alluvial Fan Sage Scrub
- Disturbed Riversidean Alluvial Fan Sage Scrub

**Upland Vegetation Communities**

- CC - Chamise Chaparral
- CLOW - Coast Live Oak Woodland
- RSS - Riversidean Sage Scrub
- DCC - Disturbed Chamise Chaparral
- DRSS - Disturbed Riversidean Sage Scrub
- DDL - Residential/Urban/Exotic
- NNG - Non-native Grassland
- DNNG - Disturbed Non-native Grassland
- SWS-U - Upland Southern Willow Scrub

**MSHCP Riparian/Riverine Vegetation Communities**

- CAM - Cismontane Alkali Marsh
- DCAM - Disturbed Cismontane Alkali Marsh
- RAFS - Riversidean Alluvial Fan Scrub
- DRAFS - Disturbed Riversidean Alluvial Fan Scrub
- SWS - Southern Willow Scrub
- FWM - Coastal and Valley Fresh Water Marsh
- OW - Open Water
- SCWR - Southern Cottonwood/Willow Riparian Forest
- MFS - Mule Fat Scrub
- SARW - Southern Sycamore/Alder Riparian Woodland
- RS - Riparian Scrub

\* Map Notes:  
- Project Features subject to change based on geotechnical investigations, final engineering, ongoing coordination with the resource agencies, and field assessments conducted prior to construction  
- Map Current as of 11/19/2014

**amec**

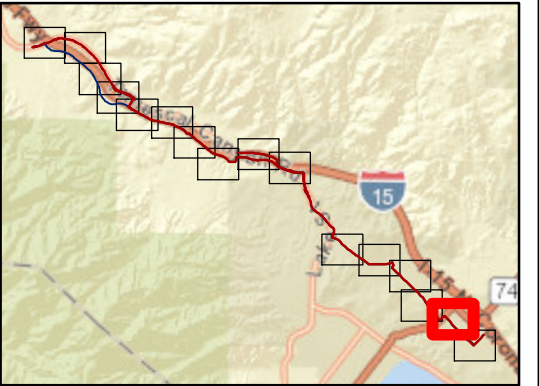
1 inch = 300 feet

0 150 300 Feet

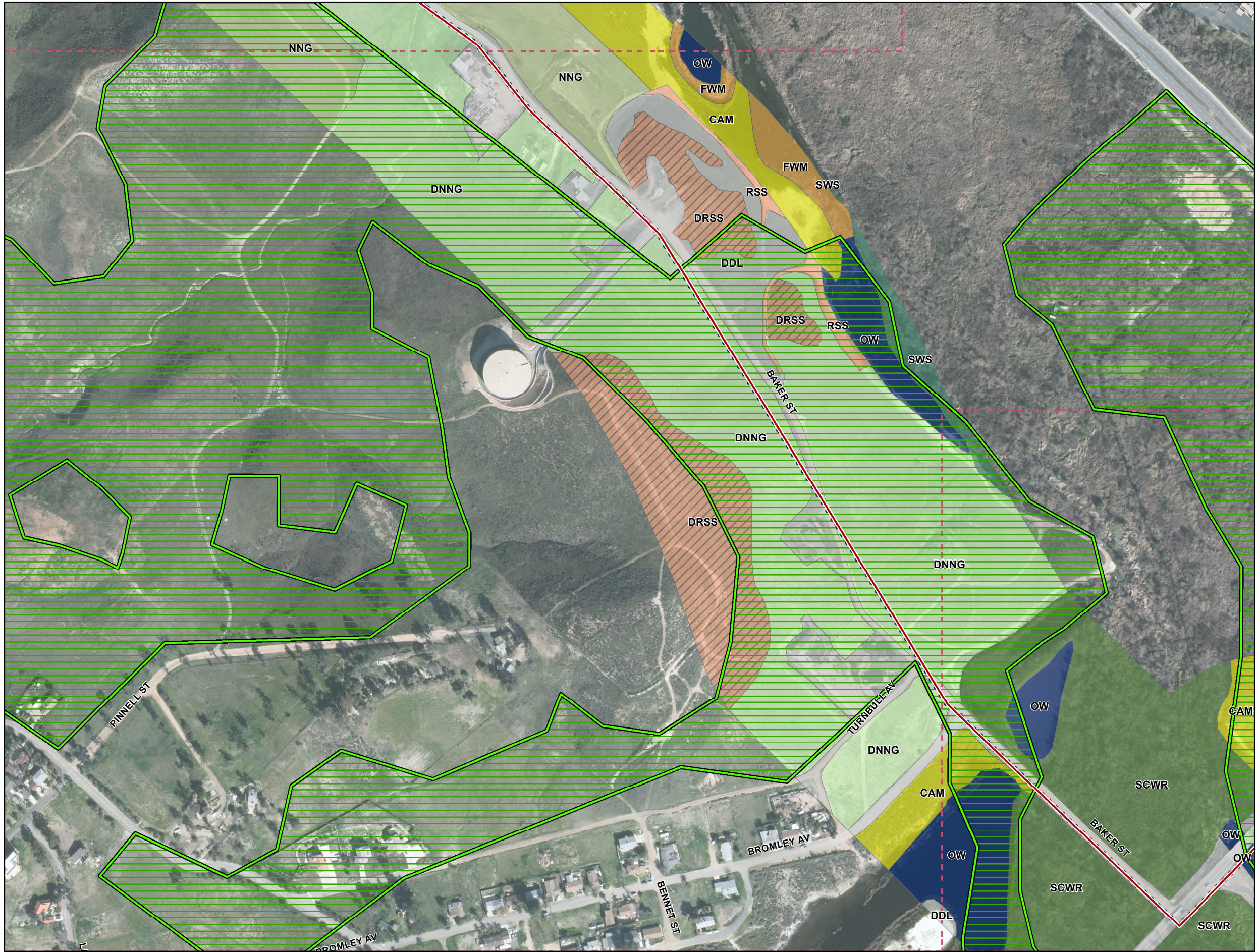
N

**Appendix I - County Habitat Mapping for  
Rough Step Analysis  
MSHCP Biological Resources Technical Report  
for the Valley-Ivyglen Subtransmission Line Project  
Phase 2  
Riverside County, California**

**Map 2**







Path: Q:\NaturalResources\SCE\_ValleyIvyglen\mxd\2014\ReportsAndSubmissions\BTR\Phase2\Appendix 1 CountyMapping.mxd, aaron.johnson 11/19/2014

### Legend

**Subtransmission Route**

- Segment 4
- Segment 5
- Segment 6
- Segment 7
- Shoofly
- Underground Portion (Segment 8)
- Fiber Optic Line
- Conserved Lands (MSHCP)
- Map Page Indicator

**Riverside County Habitat Mapping**

- Non-native Grassland
- Riversidean Alluvial Fan Sage Scrub
- Disturbed Riversidean Alluvial Fan Sage Scrub

**Upland Vegetation Communities**

- CC - Chamise Chaparral
- CLOW - Coast Live Oak Woodland
- RSS - Riversidean Sage Scrub
- DCC - Disturbed Chamise Chaparral
- DRSS - Disturbed Riversidean Sage Scrub
- DDL - Residential/Urban/Exotic
- NNG - Non-native Grassland
- DNNG- Disturbed Non-native Grassland
- SWS-U - Upland Southern Willow Scrub

**MSHCP Riparian/Riverine Vegetation Communities**

- CAM - Cismontane Alkali Marsh
- DCAM - Disturbed Cismontane Alkali Marsh
- RAFS - Riversidean Alluvial Fan Scrub
- DRAFS - Disturbed Riversidean Alluvial Fan Scrub
- SWS - Southern Willow Scrub
- FWM - Coastal and Valley Fresh Water Marsh
- OW - Open Water
- SCWR - Southern Cottonwood/Willow Riparian Forest
- MFS - Mule Fat Scrub
- SARW - Southern Sycamore/Alder Riparian Woodland
- RS - Riparian Scrub

\* Map Notes:  
- Project Features subject to change based on geotechnical investigations, final engineering, ongoing coordination with the resource agencies, and field assessments conducted prior to construction  
- Map Current as of 11/19/2014

1 inch = 300 feet

0 150 300 Feet

**Appendix I - County Habitat Mapping for  
Rough Step Analysis**

**MSHCP Biological Resources Technical Report  
for the Valley-Ivyglen Subtransmission Line Project  
Phase 2**

**Riverside County, California**

**Map 3**





Path: Q:\NaturalResources\SCE\_ValleyIvyglen\mxd\2014\ReportsAndSubmissions\BTR\Phase2\Appendix 1 CountyMapping.mxd, aaron.johnson 11/19/2014

### Legend

**Subtransmission Route**

- Segment 4
- Segment 5
- Segment 6
- Segment 7
- Shoofly
- Underground Portion (Segment 8)
- Fiber Optic Line
- Conserved Lands (MSHCP)
- Map Page Indicator

**Riverside County Habitat Mapping**

- Non-native Grassland
- Riversidean Alluvial Fan Sage Scrub
- Disturbed Riversidean Alluvial Fan Sage Scrub

**Upland Vegetation Communities**

- CC - Chamise Chaparral
- CLOW - Coast Live Oak Woodland
- RSS - Riversidean Sage Scrub
- DCC - Disturbed Chamise Chaparral
- DRSS - Disturbed Riversidean Sage Scrub
- DDL - Residential/Urban/Exotic
- NNG - Non-native Grassland
- DNNG - Disturbed Non-native Grassland
- SWS-U - Upland Southern Willow Scrub

**MSHCP Riparian/Riverine Vegetation Communities**

- CAM - Cismontane Alkali Marsh
- DCAM - Disturbed Cismontane Alkali Marsh
- RAFS - Riversidean Alluvial Fan Scrub
- DRAFS - Disturbed Riversidean Alluvial Fan Scrub
- SWS - Southern Willow Scrub
- FWM - Coastal and Valley Fresh Water Marsh
- OW - Open Water
- SCWR - Southern Cottonwood/Willow Riparian Forest
- MFS - Mule Fat Scrub
- SARW - Southern Sycamore/Alder Riparian Woodland
- RS - Riparian Scrub

\* Map Notes:  
- Project Features subject to change based on geotechnical investigations, final engineering, ongoing coordination with the resource agencies, and field assessments conducted prior to construction  
- Map Current as of 11/19/2014

amec

1 inch = 300 feet

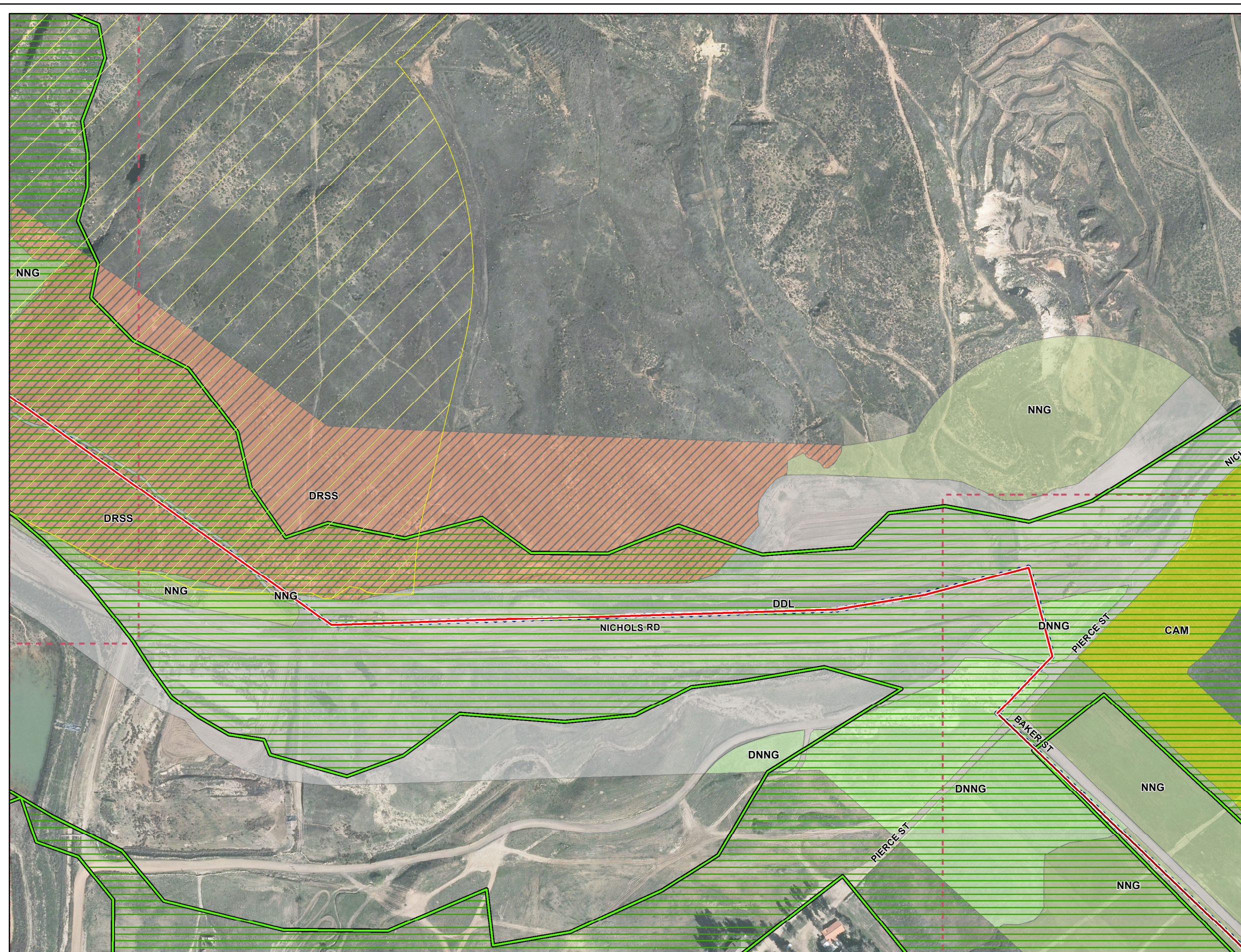
0 150 300 Feet

N

**Appendix I - County Habitat Mapping for  
Rough Step Analysis  
MSHCP Biological Resources Technical Report  
for the Valley-Ivyglen Subtransmission Line Project  
Phase 2  
Riverside County, California**










**Map 4**







### Legend

## Subtransmission Route

-  Segment 4
-  Segment 5
-  Segment 6
-  Segment 7
-  Shoofly
-  Underground Portion (Segment 8)
-  Fiber Optic Line
-  Conserved Lands (MSHCP)
-  Map Page Indicator

## Riverside County Habitat Mapping

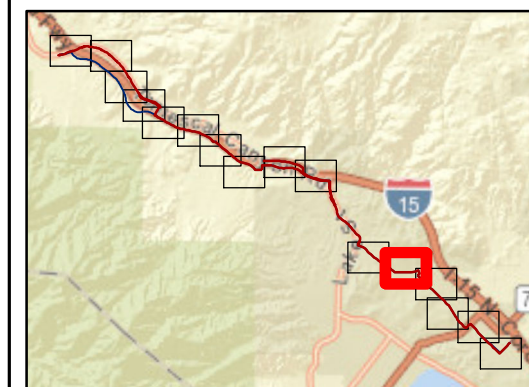
-  Non-native Grassland  
 Riversidean Alluvial Fan Sage Scrub  
 Disturbed Riversidean Alluvial Fan Sage Scrub

### Upland Vegetation Communities

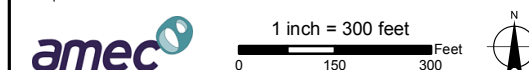
-  CC - Chamise Chaparral  
 CLOW - Coast Live Oak Woodland  
 RSS - Riversidean Sage Scrub  
 DCC - Disturbed Chamise Chaparral  
 DRSS - Disturbed Riversidean Sage Scrub  
 DDL - Residential/Urban/Exotic  
 NNG - Non-native Grassland  
 DNNG - Disturbed Non-native Grassland  
 SWS-U - Upland Southern Willow Scrub

### MSHCP Riparian/Riverine Vegetation Communities

- |   |   |
|---|---|
|  | CAM - Cismontane Alkali Marsh                     |
|  | DCAM - Disturbed Cismontane Alkali Marsh          |
|  | RAFS - Riversidean Alluvial Fan Scrub             |
|  | DRAFS - Disturbed Riversidean Alluvial Fan Scrub  |
|  | SWS - Southern Willow Scrub                       |
|  | FWM - Coastal and Valley Fresh Water Marsh        |
|  | OW - Open Water                                   |
|  | SCWR - Southern Cottonwood/Willow Riparian Forest |
|  | MFS - Mule Fat Scrub                              |
|  | SARW - Southern Sycamore/Alder Riparian Woodland  |
|  | RS - Riparian Scrub                               |



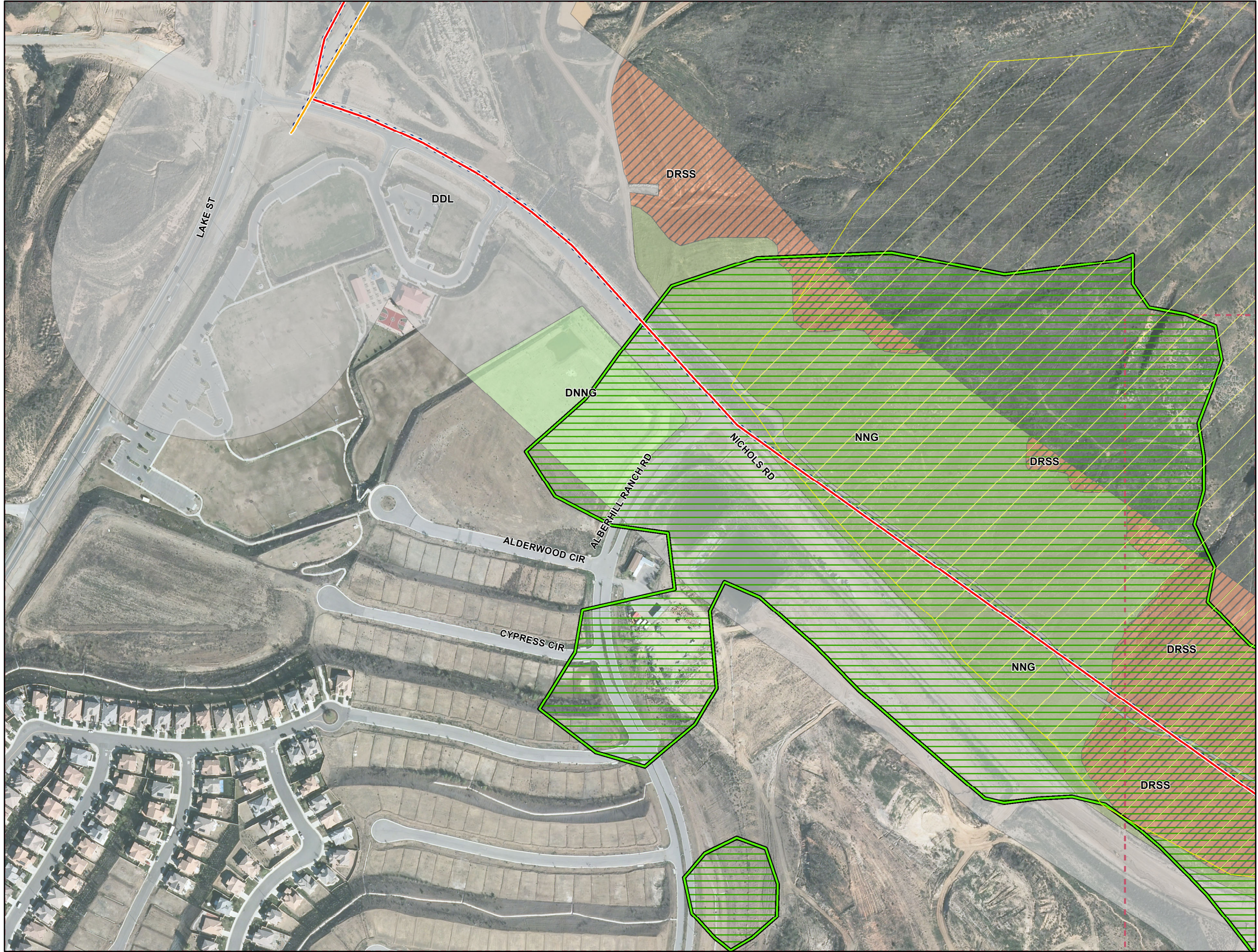
\* Map Notes:  
- Project Features subject to change based on geotechnical investigations, final engineering, ongoing coordination with the resource agencies, and field assessments conducted prior to construction  
- Map Current as of 11/19/2014



**Appendix I - County Habitat Mapping for  
Rough Step Analysis  
MSHCP Biological Resources Technical Report  
for the Valley-Ivyglen Subtransmission Line Project  
Phase 2  
Riverside County, California**

### Map 5





Path: Q:\NaturalResources\SCE\_ValleyIvyglen\mxd\2014\ReportsAndSubmissions\BTR\Phase2\Appendix 1 CountyMapping.mxd, aaron.johnson 11/19/2014

### Legend

**Subtransmission Route**

- Segment 4
- Segment 5
- Segment 6
- Segment 7
- Shoofly
- Underground Portion (Segment 8)
- Fiber Optic Line
- Conserved Lands (MSHCP)
- Map Page Indicator

**Riverside County Habitat Mapping**

- Non-native Grassland
- Riverside Alluvial Fan Sage Scrub
- Disturbed Riverside Alluvial Fan Sage Scrub

**Upland Vegetation Communities**

- CC - Chamise Chaparral
- CLOW - Coast Live Oak Woodland
- RSS - Riverside Sage Scrub
- DCC - Disturbed Chamise Chaparral
- DRSS - Disturbed Riverside Sage Scrub
- DDL - Residential/Urban/Exotic
- NNG - Non-native Grassland
- DNNG - Disturbed Non-native Grassland
- SWS-U - Upland Southern Willow Scrub

**MSHCP Riparian/Riverine Vegetation Communities**

- CAM - Cismontane Alkali Marsh
- DCAM - Disturbed Cismontane Alkali Marsh
- RAFS - Riverside Alluvial Fan Scrub
- DRAFS - Disturbed Riverside Alluvial Fan Scrub
- SWS - Southern Willow Scrub
- FWM - Coastal and Valley Fresh Water Marsh
- OW - Open Water
- SCWR - Southern Cottonwood/Willow Riparian Forest
- MFS - Mule Fat Scrub
- SARW - Southern Sycamore/Alder Riparian Woodland
- RS - Riparian Scrub

**\* Map Notes:**

- Project Features subject to change based on geotechnical investigations, final engineering, ongoing coordination with the resource agencies, and field assessments conducted prior to construction
- Map Current as of 11/19/2014

**amec**

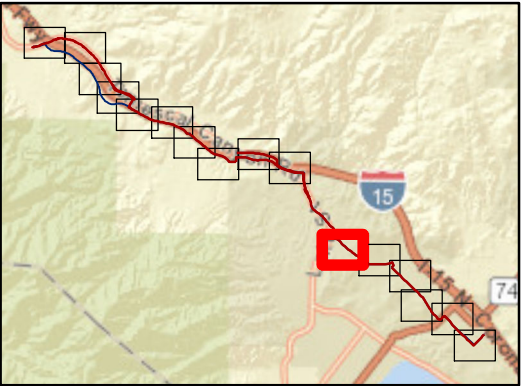
1 inch = 300 feet

0 150 300 Feet

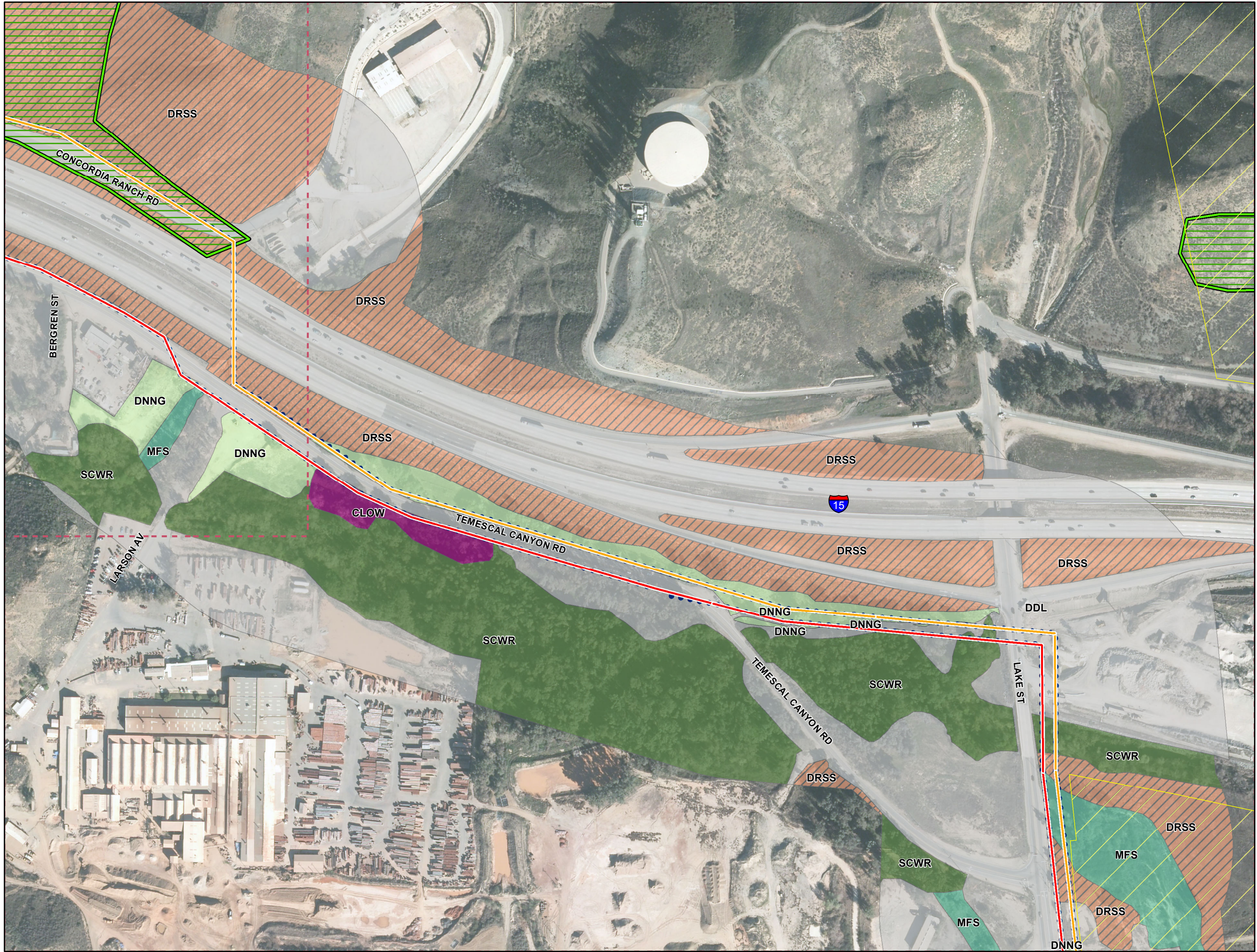
N

**Appendix I - County Habitat Mapping for  
Rough Step Analysis  
MSHCP Biological Resources Technical Report  
for the Valley-Ivyglen Subtransmission Line Project  
Phase 2  
Riverside County, California**

**Map 6**







Path: Q:\NaturalResources\SCE\_ValleyIvyglen\mxd\2014\ReportsAndSubmissions\BTR\Phase2\Appendix 1 CountyMapping.mxd, aaron.johnson, 11/19/2014

## Legend

### Subtransmission Route

- Segment 4
- Segment 5
- Segment 6
- Segment 7
- Shoofly
- Underground Portion (Segment 8)
- Fiber Optic Line
- Conserved Lands (MSHCP)
- Map Page Indicator

### Riverside County Habitat Mapping

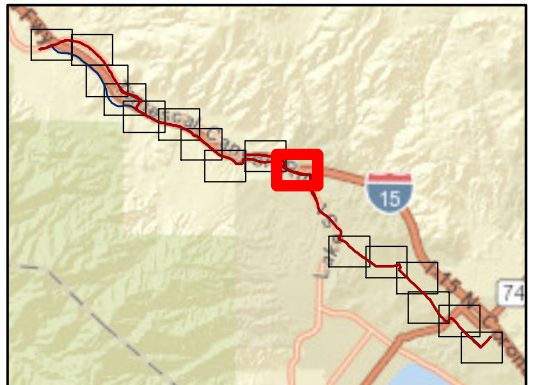
- Non-native Grassland
- Riversidean Alluvial Fan Sage Scrub
- Disturbed Riversidean Alluvial Fan Sage Scrub

### Upland Vegetation Communities

- CC - Chamise Chaparral
- CLOW - Coast Live Oak Woodland
- RSS - Riversidean Sage Scrub
- DCC - Disturbed Chamise Chaparral
- DRSS - Disturbed Riversidean Sage Scrub
- DDL - Residential/Urban/Exotic
- NNG - Non-native Grassland
- DNNG - Disturbed Non-native Grassland
- SWS-U - Upland Southern Willow Scrub

### MSHCP Riparian/Riverine Vegetation Communities

- CAM - Cismontane Alkali Marsh
- DCAM - Disturbed Cismontane Alkali Marsh
- RAFS - Riversidean Alluvial Fan Scrub
- DRAFS - Disturbed Riversidean Alluvial Fan Scrub
- SWS - Southern Willow Scrub
- FWM - Coastal and Valley Fresh Water Marsh
- OW - Open Water
- SCWR - Southern Cottonwood/Willow Riparian Forest
- MFS - Mule Fat Scrub
- SARW - Southern Sycamore/Alder Riparian Woodland
- RS - Riparian Scrub



\* Map Notes:  
- Project Features subject to change based on geotechnical investigations, final engineering, ongoing coordination with the resource agencies, and field assessments conducted prior to construction  
- Map Current as of 11/19/2014



1 inch = 300 feet

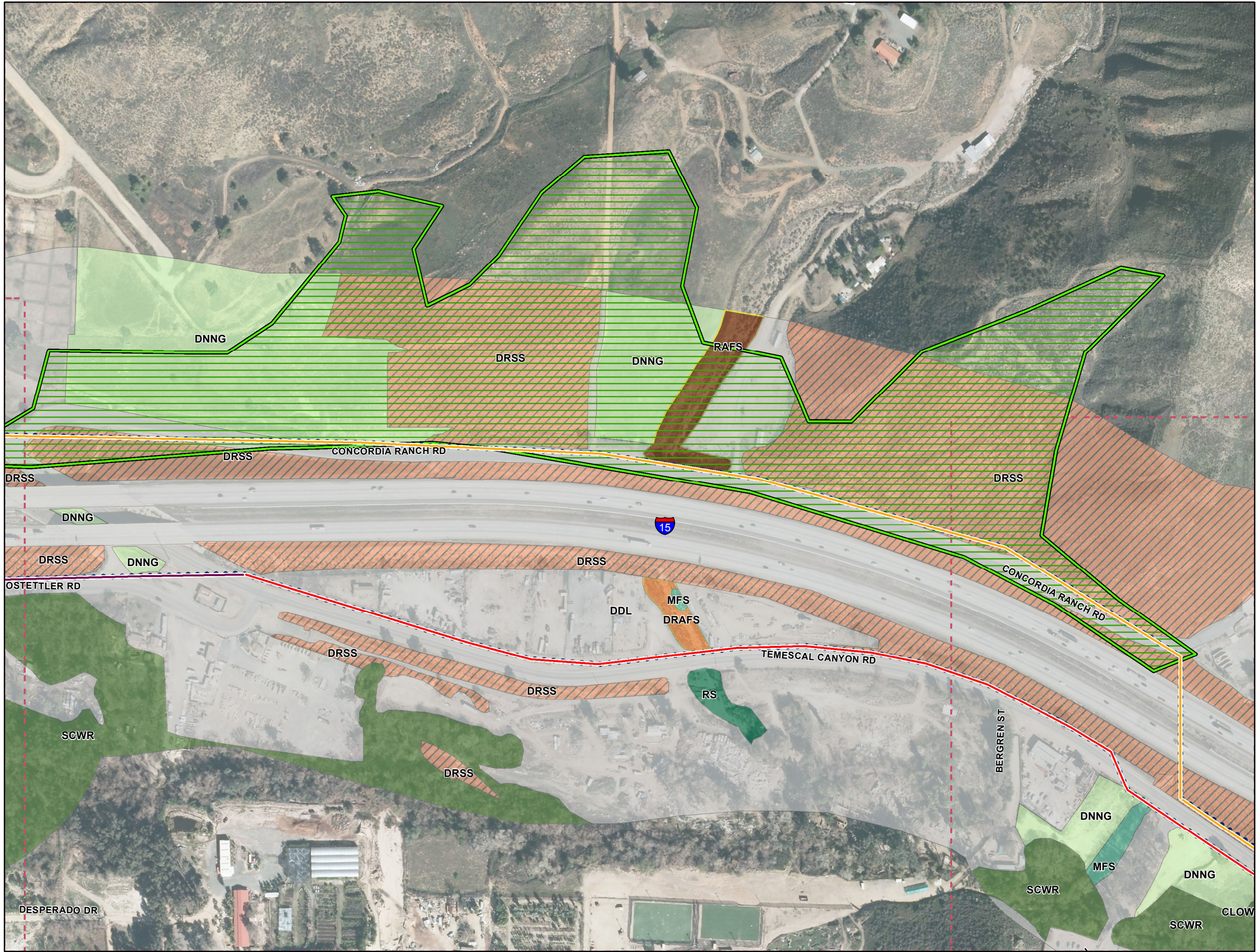
0 150 300 Feet



Appendix I - County Habitat Mapping for  
Rough Step Analysis  
MSHCP Biological Resources Technical Report  
for the Valley-Ivyglen Subtransmission Line Project  
Phase 2  
Riverside County, California

Map 7





Path: Q:\NaturalResources\SCE\_ValleyIvyglen\mxd\2014\ReportsAndSubmissions\BTR\Phase2\Appendix 1 CountyMapping.mxd, aaron johnson 11/19/2014

### Legend

**Subtransmission Route**

- Segment 4
- Segment 5
- Segment 6
- Segment 7
- Shoofly
- Underground Portion (Segment 8)
- Fiber Optic Line
- Conserved Lands (MSHCP)
- Map Page Indicator

**Riverside County Habitat Mapping**

- Non-native Grassland
- Riversidean Alluvial Fan Sage Scrub
- Disturbed Riversidean Alluvial Fan Sage Scrub

**Upland Vegetation Communities**

- CC - Chamise Chaparral
- CLOW - Coast Live Oak Woodland
- RSS - Riversidean Sage Scrub
- DCC - Disturbed Chamise Chaparral
- DRSS - Disturbed Riversidean Sage Scrub
- DDL - Residential/Urban/Exotic
- NNG - Non-native Grassland
- DNNG- Disturbed Non-native Grassland
- SWS-U - Upland Southern Willow Scrub

**MSHCP Riparian/Riverine Vegetation Communities**

- CAM - Cismontane Alkali Marsh
- DCAM - Disturbed Cismontane Alkali Marsh
- RAFS - Riversidean Alluvial Fan Scrub
- DRAFS - Disturbed Riversidean Alluvial Fan Scrub
- SWS - Southern Willow Scrub
- FWM - Coastal and Valley Fresh Water Marsh
- OW - Open Water
- SCWR - Southern Cottonwood/Willow Riparian Forest
- MFS - Mule Fat Scrub
- SARW - Southern Sycamore/Alder Riparian Woodland
- RS - Riparian Scrub

**\* Map Notes:**

- Project Features subject to change based on geotechnical investigations, final engineering, ongoing coordination with the resource agencies, and field assessments conducted prior to construction
- Map Current as of 11/19/2014

**amec**

1 inch = 300 feet

0 150 300 Feet

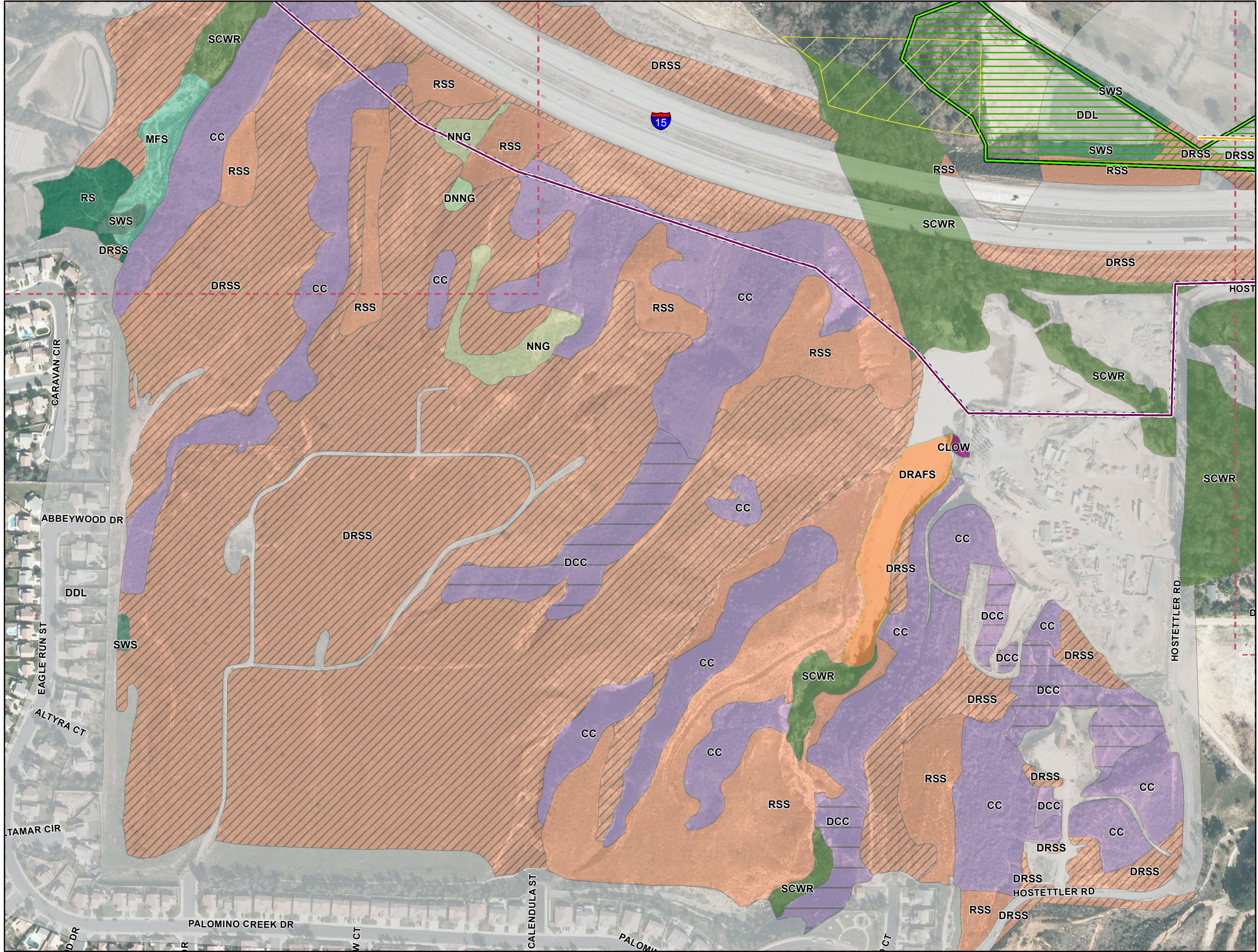
N

**Appendix I - County Habitat Mapping for  
Rough Step Analysis  
MSHCP Biological Resources Technical Report  
for the Valley-Ivyglen Subtransmission Line Project  
Phase 2  
Riverside County, California**

**Map 8**

Path: Q:\NaturalResources\SCE\_ValleyIvyglen\mxd\2014\ReportsAndSubmissions\BTR\Phase2\Appendix 1 CountyMapping.mxd, aaron johnson 11/19/2014





Path: Q:\NaturalResources\SCF\_ValleyIvyglen\mxd\2014\ReportsAndSubmissions\BTR\Phase2\Appendix 1 CountyMapping.mxd, aaron johnson 11/19/2014

### Legend

**Subtransmission Route**

- Segment 4
- Segment 5
- Segment 6
- Segment 7
- Shoofly
- Underground Portion (Segment 8)
- Fiber Optic Line
- Conserved Lands (MSHCP)
- Map Page Indicator

**Riverside County Habitat Mapping**

- Non-native Grassland
- Riversidean Alluvial Fan Sage Scrub
- Disturbed Riversidean Alluvial Fan Sage Scrub

**Upland Vegetation Communities**

- CC - Chamise Chaparral
- CLOW - Coast Live Oak Woodland
- RSS - Riversidean Sage Scrub
- DCC - Disturbed Chamise Chaparral
- DRSS - Disturbed Riversidean Sage Scrub
- DDL - Residential/Urban/Exotic
- NNG - Non-native Grassland
- DNNG - Disturbed Non-native Grassland
- SWS-U - Upland Southern Willow Scrub

**MSHCP Riparian/Riverine Vegetation Communities**

- CAM - Cismontane Alkali Marsh
- DCAM - Disturbed Cismontane Alkali Marsh
- RAFS - Riversidean Alluvial Fan Scrub
- DRAFS - Disturbed Riversidean Alluvial Fan Scrub
- SWS - Southern Willow Scrub
- FWM - Coastal and Valley Fresh Water Marsh
- OW - Open Water
- SCWR - Southern Cottonwood/Willow Riparian Forest
- MFS - Mule Fat Scrub
- SARW - Southern Sycamore/Alder Riparian Woodland
- RS - Riparian Scrub

\* Map Notes:  
- Project Features subject to change based on geotechnical investigations, final engineering, ongoing coordination with the resource agencies, and field assessments conducted prior to construction  
- Map Current as of 11/19/2014

1 inch = 300 feet

0 150 300 Feet

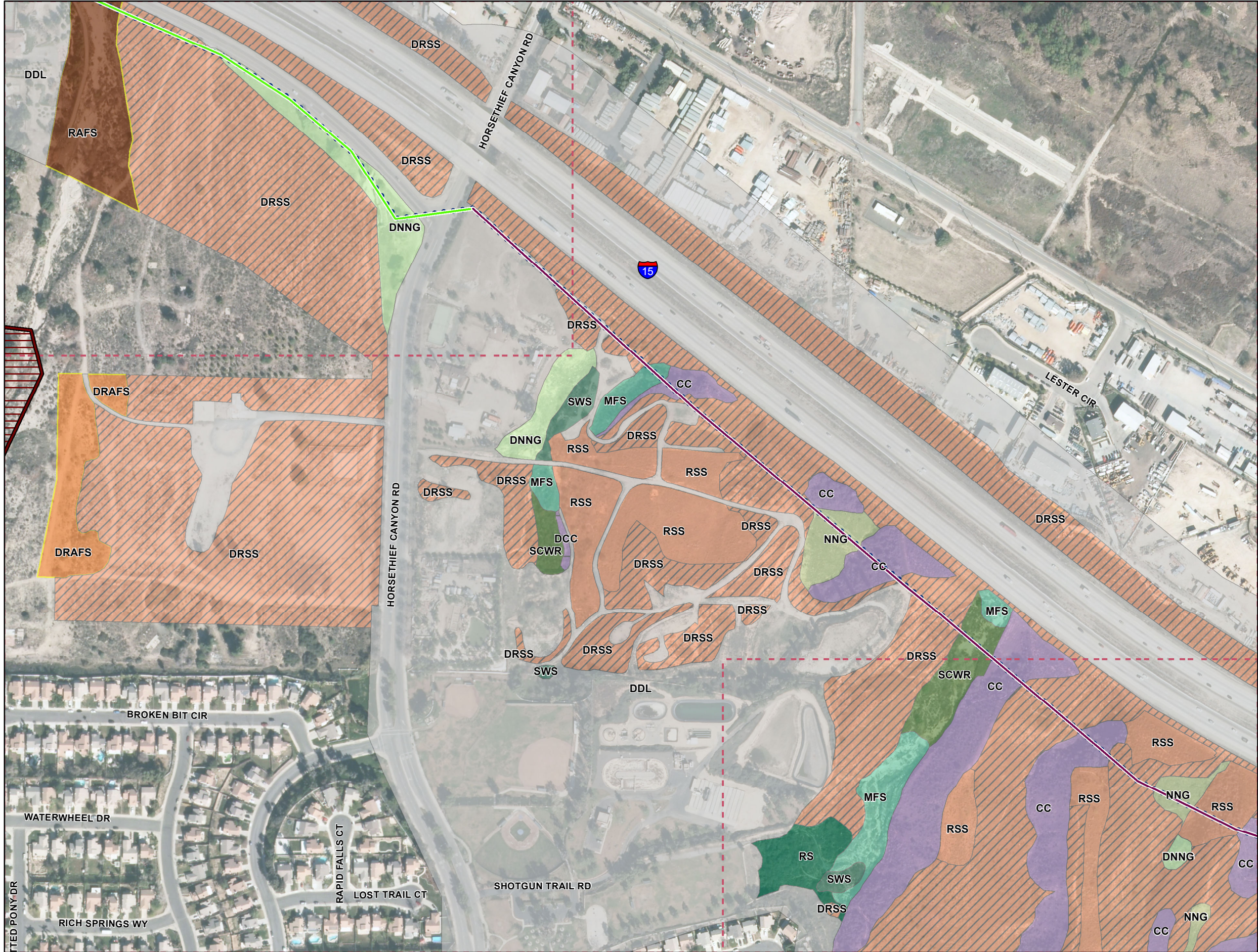
amec

**Appendix I - County Habitat Mapping for Rough Step Analysis**  
**MSHCP Biological Resources Technical Report**  
**for the Valley-Ivyglen Subtransmission Line Project**  
**Phase 2**  
**Riverside County, California**

**Map 9**

Path: Q:\NaturalResources\SCF\_ValleyIvyglen\mxd\2014\ReportsAndSubmissions\BTR\Phase2\Appendix 1 CountyMapping.mxd, aaron johnson 11/19/2014





Path: Q:\NaturalResources\SCE\_ValleyIvyglen\mxd\2014\ReportsAndSubmissions\BTR\Phase2\Appendix 1 CountyMapping.mxd, aaron johnson 11/19/2014

### Legend

**Subtransmission Route**

- Segment 4
- Segment 5
- Segment 6
- Segment 7
- Shoofly
- Underground Portion (Segment 8)
- Fiber Optic Line
- Conserved Lands (MSHCP)
- Map Page Indicator

**Riverside County Habitat Mapping**

- Non-native Grassland
- Riversidean Alluvial Fan Sage Scrub
- Disturbed Riversidean Alluvial Fan Sage Scrub

**Upland Vegetation Communities**

- CC - Chamise Chaparral
- CLOW - Coast Live Oak Woodland
- RSS - Riversidean Sage Scrub
- DCC - Disturbed Chamise Chaparral
- DRSS - Disturbed Riversidean Sage Scrub
- DDL - Residential/Urban/Exotic
- NNG - Non-native Grassland
- DNNG - Disturbed Non-native Grassland
- SWS-U - Upland Southern Willow Scrub

**MSHCP Riparian/Riverine Vegetation Communities**

- CAM - Cismontane Alkali Marsh
- DCAM - Disturbed Cismontane Alkali Marsh
- RAFA - Riversidean Alluvial Fan Scrub
- DRAFA - Disturbed Riversidean Alluvial Fan Scrub
- SWS - Southern Willow Scrub
- FWM - Coastal and Valley Fresh Water Marsh
- OW - Open Water
- SCWR - Southern Cottonwood/Willow Riparian Forest
- MFS - Mule Fat Scrub
- SARW - Southern Sycamore/Alder Riparian Woodland
- RS - Riparian Scrub

\* Map Notes:  
- Project Features subject to change based on geotechnical investigations, final engineering, ongoing coordination with the resource agencies, and field assessments conducted prior to construction  
- Map Current as of 11/19/2014

**amec**

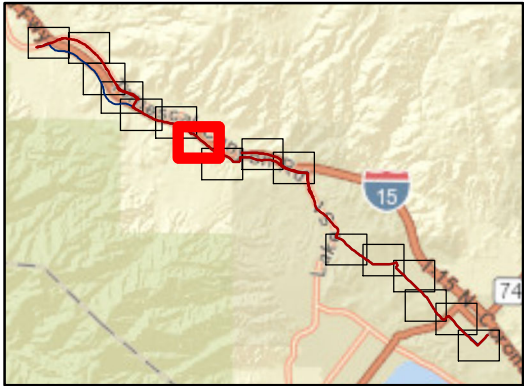
1 inch = 300 feet

0 150 300 Feet

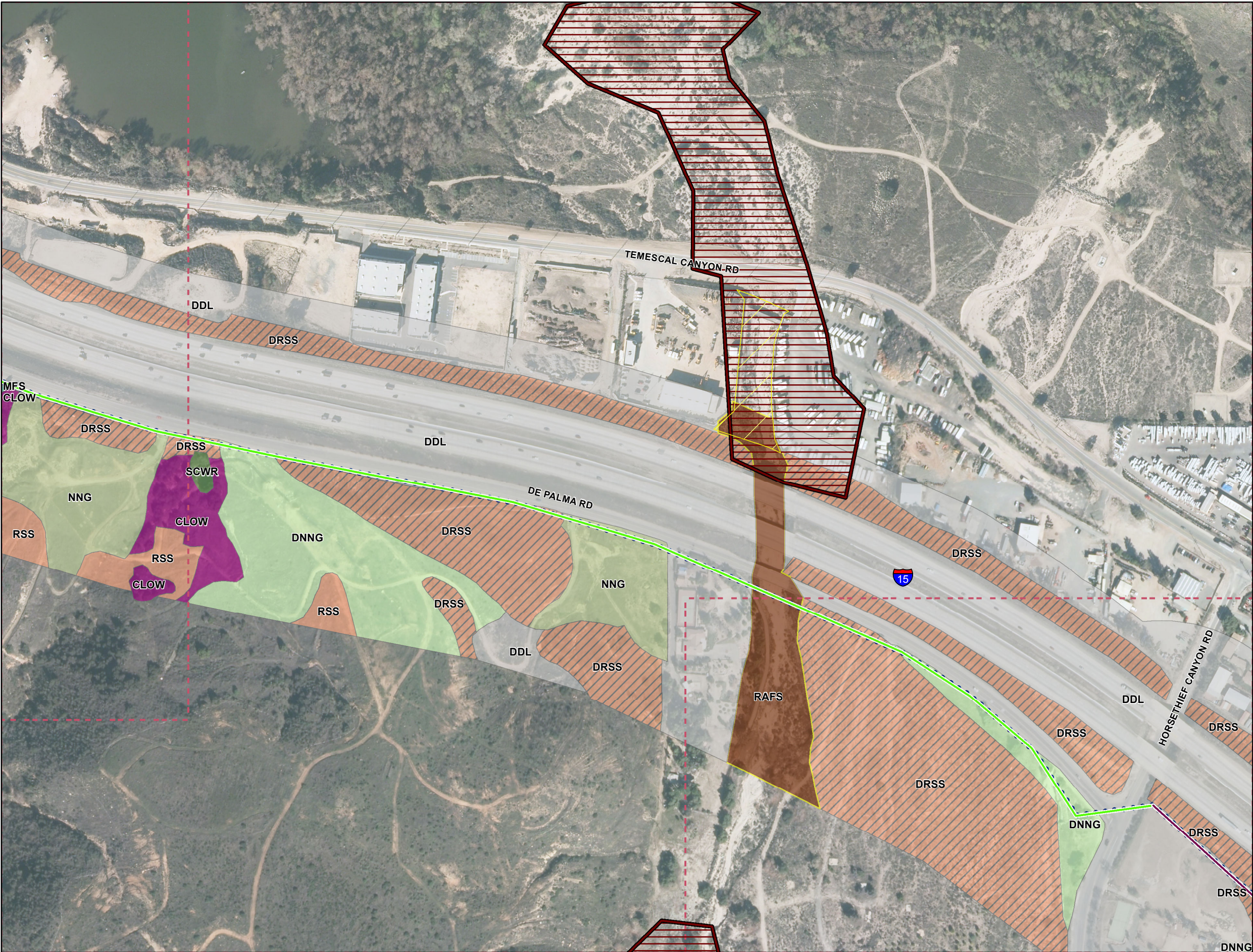
N

**Appendix I - County Habitat Mapping for  
Rough Step Analysis  
MSHCP Biological Resources Technical Report  
for the Valley-Ivyglen Subtransmission Line Project  
Phase 2  
Riverside County, California**

**Map 10**







Path: Q:\NaturalResources\SCE\_ValleyIvyglen\mxd\2014\ReportsAndSubmissions\BTR\Phase2\Appendix 1 County Mapping.mxd, aaron johnson 11/19/2014

### Legend

**Subtransmission Route**

- Segment 4
- Segment 5
- Segment 6
- Segment 7
- Shoofly
- Underground Portion (Segment 8)
- Fiber Optic Line
- Conserved Lands (MSHCP)
- Map Page Indicator

**Riverside County Habitat Mapping**

- Non-native Grassland
- Riversidean Alluvial Fan Sage Scrub
- Disturbed Riversidean Alluvial Fan Sage Scrub

**Upland Vegetation Communities**

- CC - Chamise Chaparral
- CLOW - Coast Live Oak Woodland
- RSS - Riversidean Sage Scrub
- DCC - Disturbed Chamise Chaparral
- DRSS - Disturbed Riversidean Sage Scrub
- DDL - Residential/Urban/Exotic
- NNG - Non-native Grassland
- DNNG - Disturbed Non-native Grassland
- SWS-U - Upland Southern Willow Scrub

**MSHCP Riparian/Riverine Vegetation Communities**

- CAM - Cismontane Alkali Marsh
- DCAM - Disturbed Cismontane Alkali Marsh
- RAFS - Riversidean Alluvial Fan Scrub
- DRAFS - Disturbed Riversidean Alluvial Fan Scrub
- SWS - Southern Willow Scrub
- FWM - Coastal and Valley Fresh Water Marsh
- OW - Open Water
- SCWR - Southern Cottonwood/Willow Riparian Forest
- MFS - Mule Fat Scrub
- SARW - Southern Sycamore/Alder Riparian Woodland
- RS - Riparian Scrub

\* Map Notes:  
- Project Features subject to change based on geotechnical investigations, final engineering, ongoing coordination with the resource agencies, and field assessments conducted prior to construction  
- Map Current as of 11/19/2014

**amec**

1 inch = 300 feet

0 150 300 Feet

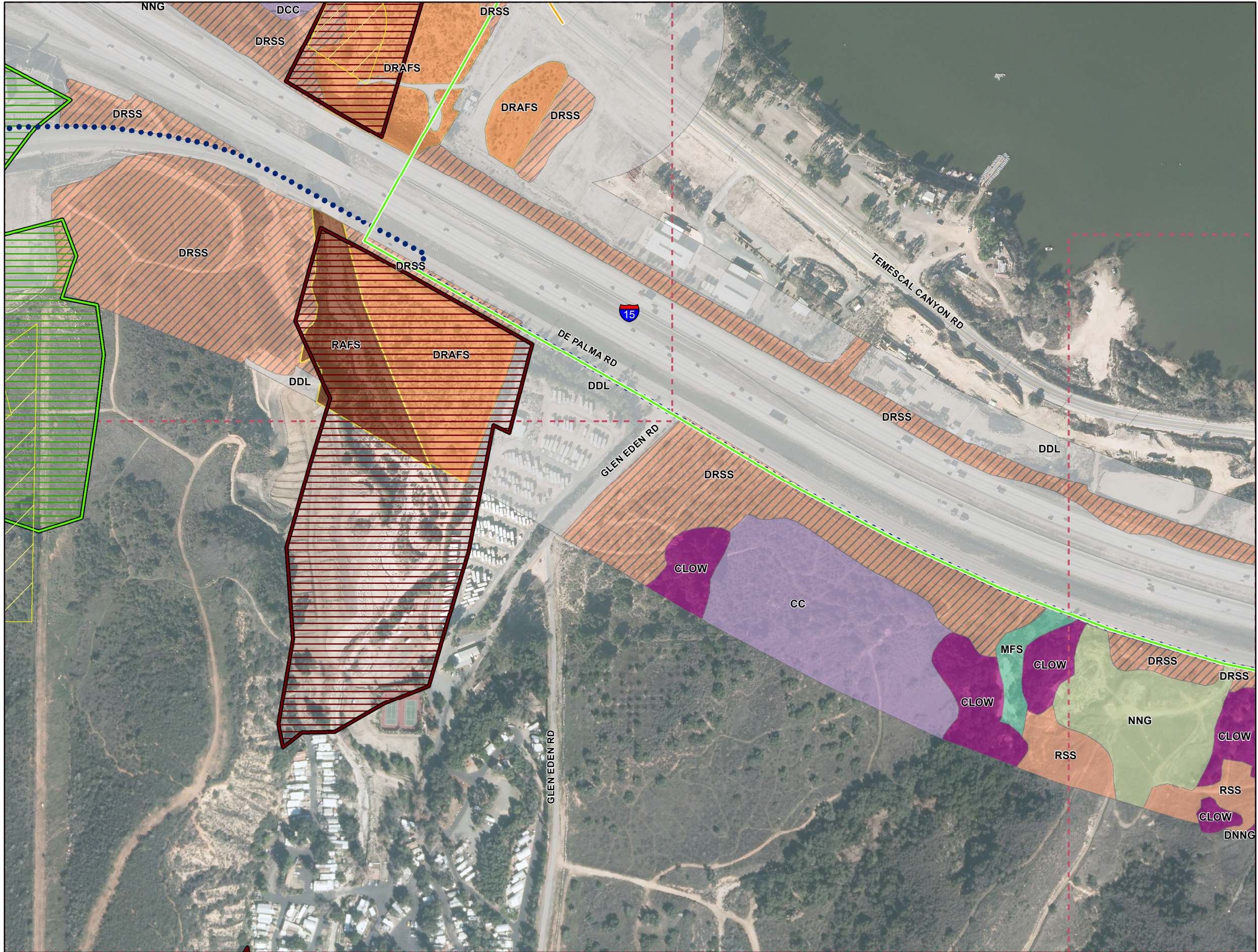
N

**Appendix I - County Habitat Mapping for  
Rough Step Analysis  
MSHCP Biological Resources Technical Report  
for the Valley-Ivyglen Subtransmission Line Project  
Phase 2  
Riverside County, California**

**Map 11**

Path: Q:\NaturalResources\SCE\_ValleyIvyglen\mxd\2014\ReportsAndSubmissions\BTR\Phase2\Appendix 1 County Mapping.mxd, aaron johnson 11/19/2014





Path: Q:\NaturalResources\SCE\_ValleyIvyglen\mxd\2014\ReportsAndSubmissions\BTR\Phase2\Appendix 1 CountyMapping.mxd, aaron johnson 11/19/2014

### Legend

**Subtransmission Route**

- Segment 4
- Segment 5
- Segment 6
- Segment 7
- Shoofly
- Underground Portion (Segment 8)
- Fiber Optic Line
- Conserved Lands (MSHCP)
- Map Page Indicator

**Riverside County Habitat Mapping**

- Non-native Grassland
- Riversidean Alluvial Fan Sage Scrub
- Disturbed Riversidean Alluvial Fan Sage Scrub

**Upland Vegetation Communities**

- CC - Chamise Chaparral
- CLOW - Coast Live Oak Woodland
- RSS - Riversidean Sage Scrub
- DCC - Disturbed Chamise Chaparral
- DRSS - Disturbed Riversidean Sage Scrub
- DDL - Residential/Urban/Exotic
- NNG - Non-native Grassland
- DNNG - Disturbed Non-native Grassland
- SWS-U - Upland Southern Willow Scrub

**MSHCP Riparian/Riverine Vegetation Communities**

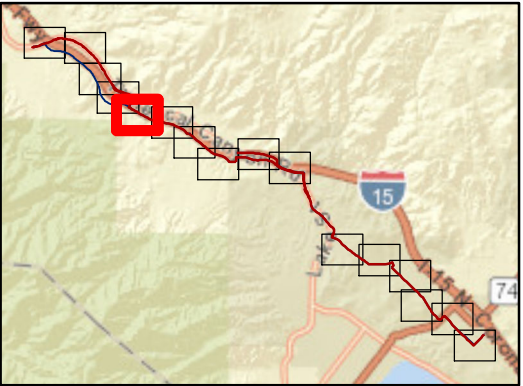
- CAM - Cismontane Alkali Marsh
- DCAM - Disturbed Cismontane Alkali Marsh
- RAFS - Riversidean Alluvial Fan Scrub
- DRAFS - Disturbed Riversidean Alluvial Fan Scrub
- SWS - Southern Willow Scrub
- FWM - Coastal and Valley Fresh Water Marsh
- OW - Open Water
- SCWR - Southern Cottonwood/Willow Riparian Forest
- MFS - Mule Fat Scrub
- SARW - Southern Sycamore/Alder Riparian Woodland
- RS - Riparian Scrub

\* Map Notes:  
- Project Features subject to change based on geotechnical investigations, final engineering, ongoing coordination with the resource agencies, and field assessments conducted prior to construction  
- Map Current as of 11/19/2014

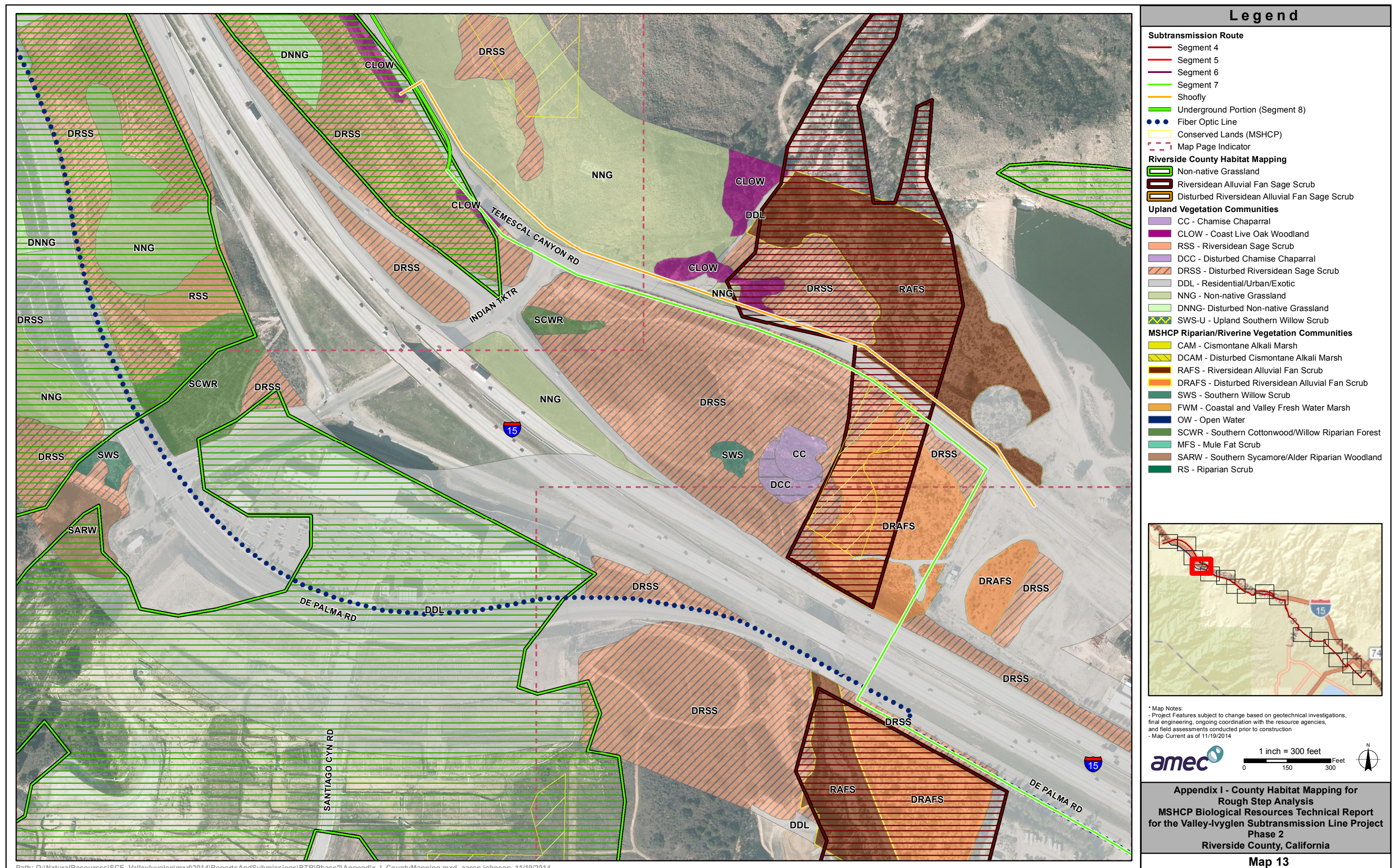
1 inch = 300 feet  
0 150 300 Feet

**Appendix I - County Habitat Mapping for  
Rough Step Analysis  
MSHCP Biological Resources Technical Report  
for the Valley-Ivyglen Subtransmission Line Project  
Phase 2  
Riverside County, California**

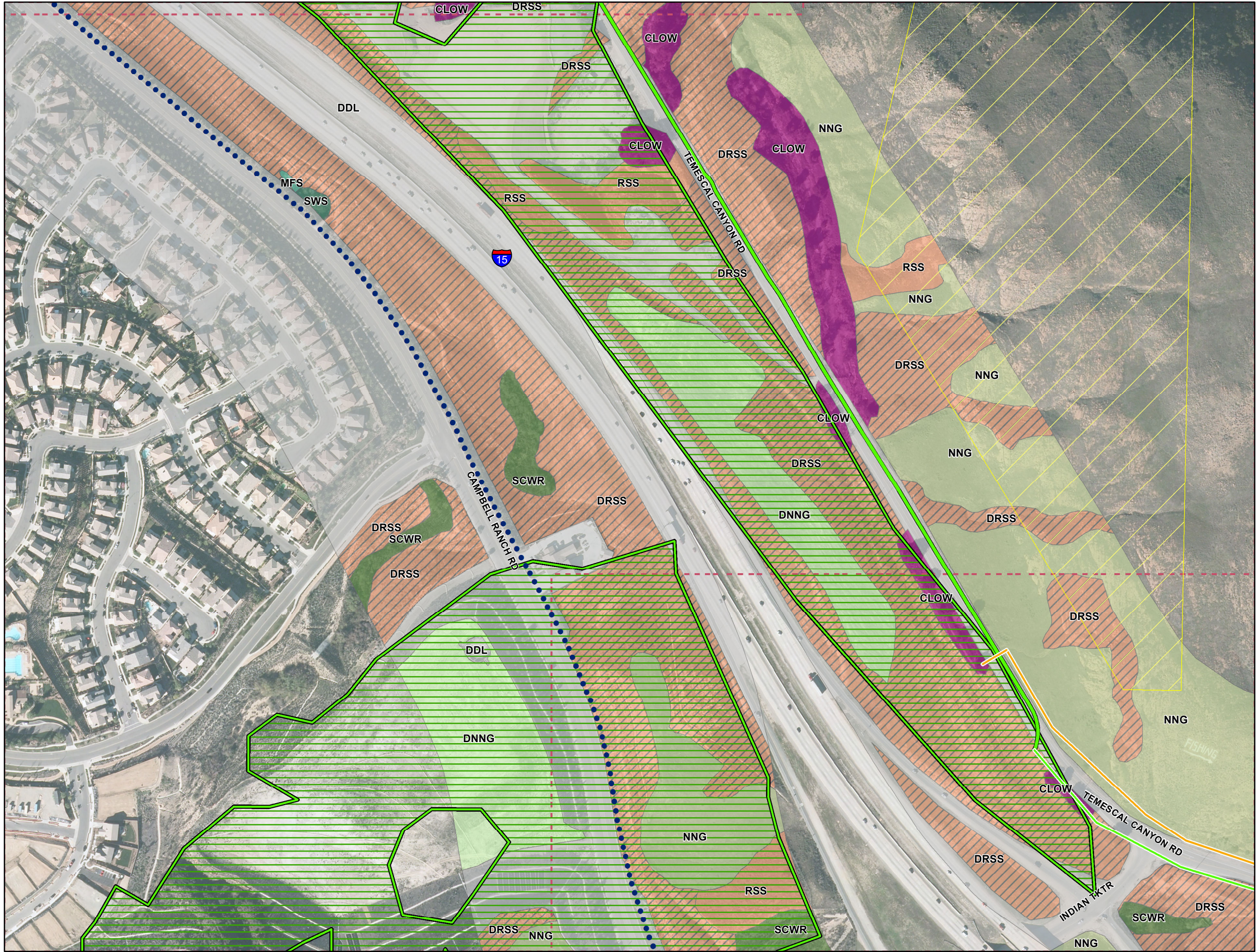
**Map 12**











Path: Q:\NaturalResources\SCE\_ValleyIvyglen\mxd\2014\ReportsAndSubmissions\BTR\Phase2\Appendix 1 County Mapping.mxd, aaron.johnson 11/19/2014

### Legend

**Subtransmission Route**

- Segment 4
- Segment 5
- Segment 6
- Segment 7
- Shoofly
- Underground Portion (Segment 8)
- Fiber Optic Line
- Conserved Lands (MSHCP)
- Map Page Indicator

**Riverside County Habitat Mapping**

- Non-native Grassland
- Riversidean Alluvial Fan Sage Scrub
- Disturbed Riversidean Alluvial Fan Sage Scrub

**Upland Vegetation Communities**

- CC - Chamise Chaparral
- CLOW - Coast Live Oak Woodland
- RSS - Riversidean Sage Scrub
- DCC - Disturbed Chamise Chaparral
- DRSS - Disturbed Riversidean Sage Scrub
- DDL - Residential/Urban/Exotic
- NNG - Non-native Grassland
- DNNG - Disturbed Non-native Grassland
- SWS-U - Upland Southern Willow Scrub

**MSHCP Riparian/Riverine Vegetation Communities**

- CAM - Cismontane Alkali Marsh
- DCAM - Disturbed Cismontane Alkali Marsh
- RAFS - Riversidean Alluvial Fan Scrub
- DRAFS - Disturbed Riversidean Alluvial Fan Scrub
- SWS - Southern Willow Scrub
- FWM - Coastal and Valley Fresh Water Marsh
- OW - Open Water
- SCWR - Southern Cottonwood/Willow Riparian Forest
- MFS - Mule Fat Scrub
- SARW - Southern Sycamore/Alder Riparian Woodland
- RS - Riparian Scrub

\* Map Notes:  
- Project Features subject to change based on geotechnical investigations, final engineering, ongoing coordination with the resource agencies, and field assessments conducted prior to construction  
- Map Current as of 11/19/2014

**amec**

1 inch = 300 feet

0 150 300 Feet

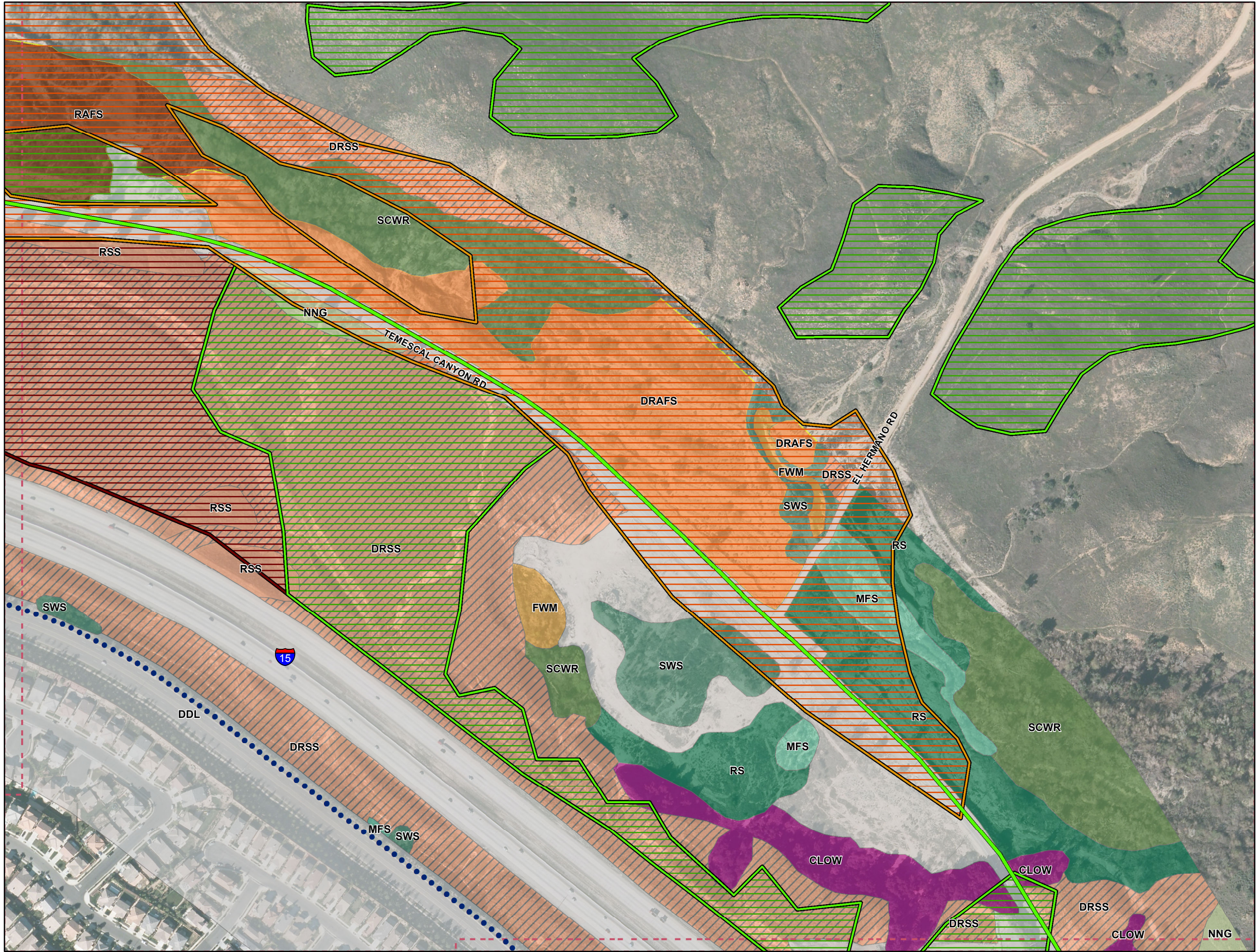
N

**Appendix I - County Habitat Mapping for  
Rough Step Analysis  
MSHCP Biological Resources Technical Report  
for the Valley-Ivyglen Subtransmission Line Project  
Phase 2  
Riverside County, California**

**Map 14**

Path: Q:\NaturalResources\SCE\_ValleyIvyglen\mxd\2014\ReportsAndSubmissions\BTR\Phase2\Appendix 1 County Mapping.mxd, aaron.johnson 11/19/2014





Path: Q:\NaturalResources\SCE\_ValleyIvyglen\mxd\2014\ReportsAndSubmissions\BTR\Phase2\Appendix 1 CountyMapping.mxd, aaron.johnson 11/19/2014

### Legend

**Subtransmission Route**

- Segment 4
- Segment 5
- Segment 6
- Segment 7
- Shoofly
- Underground Portion (Segment 8)
- Fiber Optic Line
- Conserved Lands (MSHCP)
- Map Page Indicator

**Riverside County Habitat Mapping**

- Non-native Grassland
- Riversidean Alluvial Fan Sage Scrub
- Disturbed Riversidean Alluvial Fan Sage Scrub

**Upland Vegetation Communities**

- CC - Chamise Chaparral
- CLOW - Coast Live Oak Woodland
- RSS - Riversidean Sage Scrub
- DCC - Disturbed Chamise Chaparral
- DRSS - Disturbed Riversidean Sage Scrub
- DDL - Residential/Urban/Exotic
- NNG - Non-native Grassland
- DNNG - Disturbed Non-native Grassland
- SWS-U - Upland Southern Willow Scrub

**MSHCP Riparian/Riverine Vegetation Communities**

- CAM - Cismontane Alkali Marsh
- DCAM - Disturbed Cismontane Alkali Marsh
- RAFS - Riversidean Alluvial Fan Scrub
- DRAFS - Disturbed Riversidean Alluvial Fan Scrub
- SWS - Southern Willow Scrub
- FWM - Coastal and Valley Fresh Water Marsh
- OW - Open Water
- SCWR - Southern Cottonwood/Willow Riparian Forest
- MFS - Mule Fat Scrub
- SARW - Southern Sycamore/Alder Riparian Woodland
- RS - Riparian Scrub

**\* Map Notes:**

- Project Features subject to change based on geotechnical investigations, final engineering, ongoing coordination with the resource agencies, and field assessments conducted prior to construction
- Map Current as of 11/19/2014

**amec**

1 inch = 300 feet

0 150 300 Feet

N

**Appendix I - County Habitat Mapping for Rough Step Analysis**

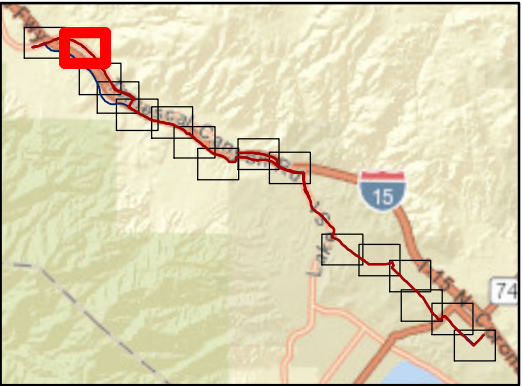
**MSHCP Biological Resources Technical Report**

**for the Valley-Ivyglen Subtransmission Line Project**

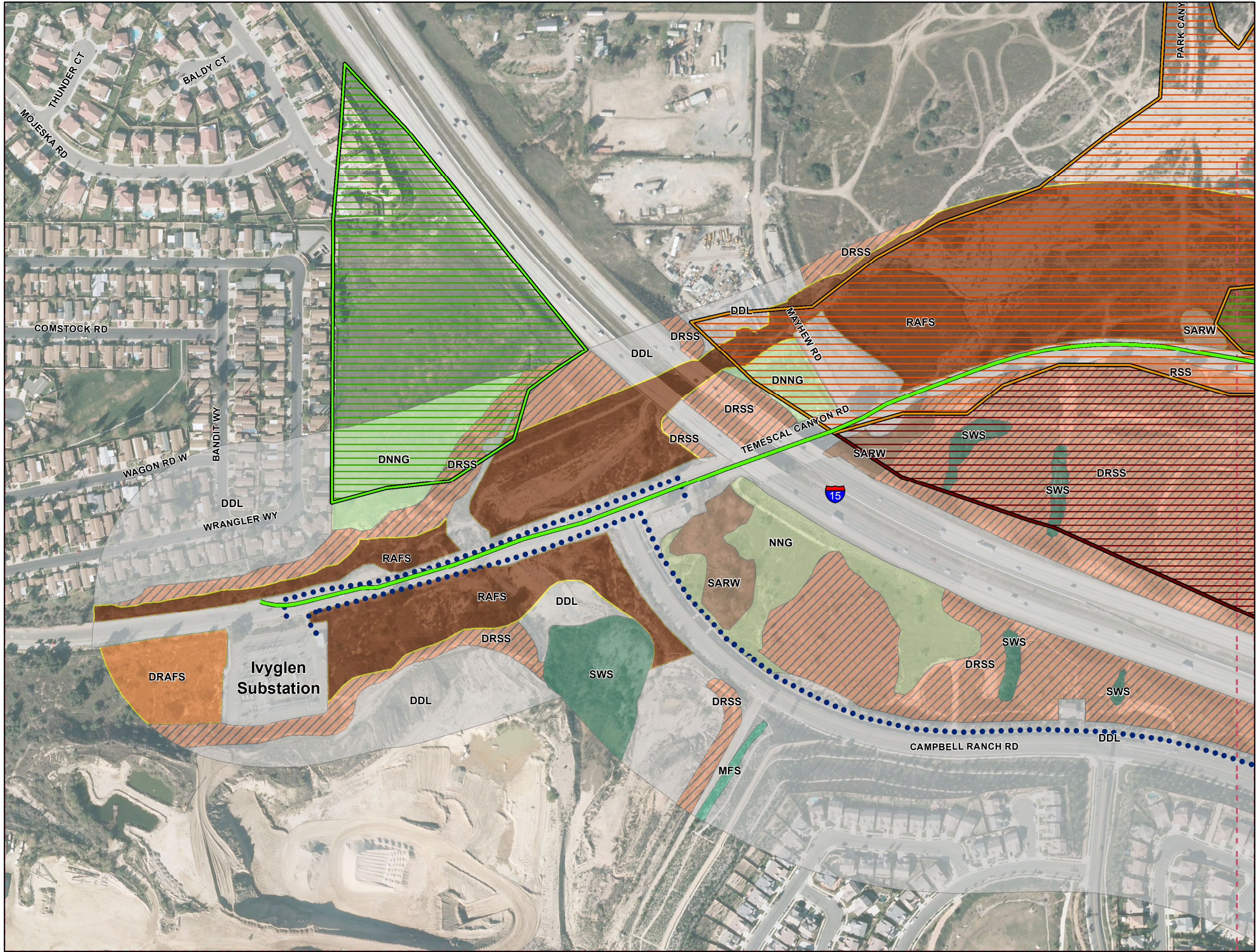
**Phase 2**

**Riverside County, California**

**Map 15**







Path: Q:\NaturalResources\SCE\_ValleyIvyglen\mxd\2014\ReportsAndSubmissions\BTR\Phase2\Appendix 1 CountyMapping.mxd, aaron.johnson 11/19/2014

## Legend

### Subtransmission Route

- Segment 4
- Segment 5
- Segment 6
- Segment 7
- Shoofly
- Underground Portion (Segment 8)
- Fiber Optic Line
- Conserved Lands (MSHCP)
- Map Page Indicator

### Riverside County Habitat Mapping

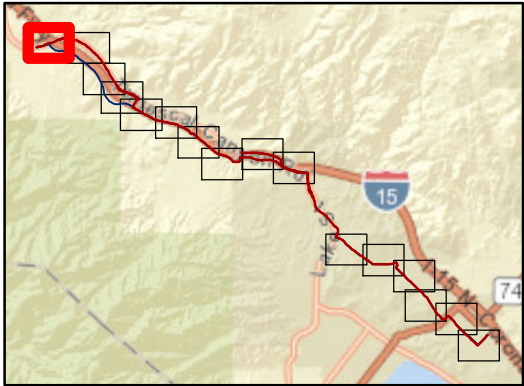
- Non-native Grassland
- Riverside Alluvial Fan Sage Scrub
- Disturbed Riverside Alluvial Fan Sage Scrub

### Upland Vegetation Communities

- CC - Chamise Chaparral
- CLOW - Coast Live Oak Woodland
- RSS - Riverside Sage Scrub
- DCC - Disturbed Chamise Chaparral
- DRSS - Disturbed Riverside Sage Scrub
- DDL - Residential/Urban/Exotic
- NNG - Non-native Grassland
- DNNG - Disturbed Non-native Grassland
- SWS-U - Upland Southern Willow Scrub

### MSHCP Riparian/Riverine Vegetation Communities

- CAM - Cismontane Alkali Marsh
- DCAM - Disturbed Cismontane Alkali Marsh
- RAFA - Riverside Alluvial Fan Scrub
- DRAFA - Disturbed Riverside Alluvial Fan Scrub
- SWS - Southern Willow Scrub
- FWM - Coastal and Valley Fresh Water Marsh
- OW - Open Water
- SCWR - Southern Cottonwood/Willow Riparian Forest
- MFS - Mule Fat Scrub
- SARW - Southern Sycamore/Alder Riparian Woodland
- RS - Riparian Scrub



\* Map Notes:  
- Project Features subject to change based on geotechnical investigations, final engineering, ongoing coordination with the resource agencies, and field assessments conducted prior to construction  
- Map Current as of 11/19/2014



1 inch = 300 feet



Appendix I - County Habitat Mapping for  
Rough Step Analysis  
MSHCP Biological Resources Technical Report  
for the Valley-Ivyglen Subtransmission Line Project  
Phase 2  
Riverside County, California