

**Appendix C**  
**MSHCP Criteria Areas and Cells**  
**MSHCP Biological Resources Technical**  
**Report for the Valley-Ivyglen**  
**Subtransmission Line Project, Phase 2**  
**Riverside County, California**

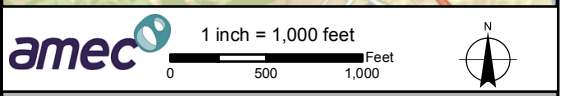
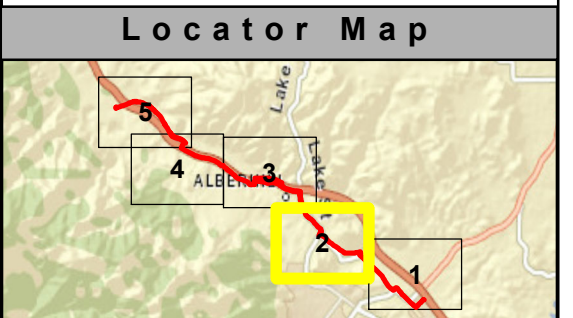
**Map 1**





### Legend

- ★ Sensitive Species (AMEC 2014)
- ★ Sensitive Species (AMEC 2013)
- ★ Sensitive Species (AMEC 2012)
- ★ Sensitive Species (AMEC 2011)
- ★ Sensitive Species (AMEC 2010)
- ★ Sensitive Species (AMEC 2009)
- ★ Sensitive Species (AMEC 2008)
- ★ Sensitive Species (AMEC 2007)
- ★ Sensitive Species (AMEC 2006)
- SCE Subtransmission Centerline
- Area Plan Boundary
- Cell Group
- Criteria Cell
- Criteria Area
- Public or Quasi-public Conserved Lands
- Area Plan Subunit
- Burrowing Owl Survey Area
- Criteria Area Species Survey Area
- Narrow Endemic Plant Survey Area
- Proposed Schematic Cores
- Conserved Lands (MSHCP)
- Existing Cores & Linkages
- Proposed Linkage
- Proposed Constrained Linkage

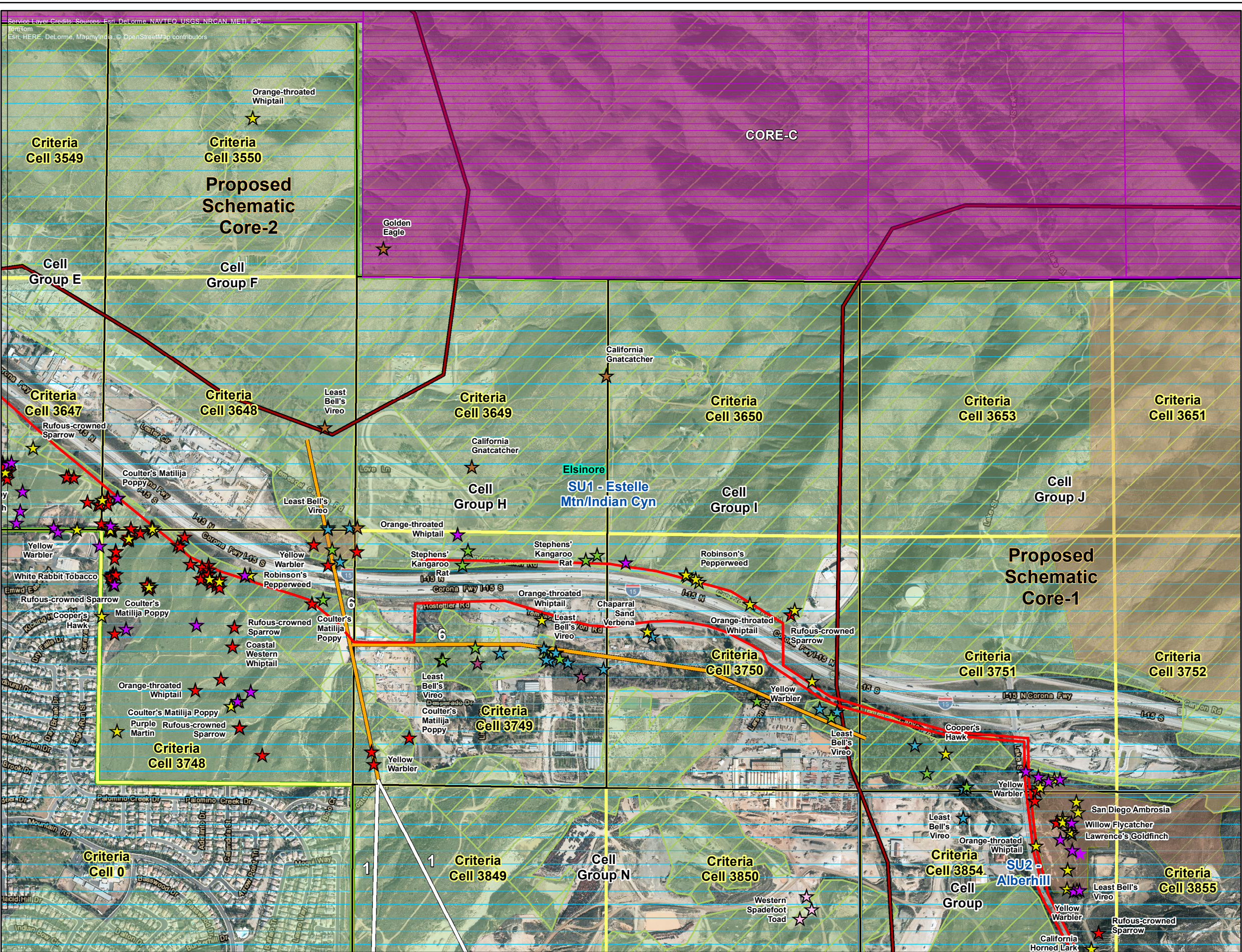


**Appendix C**  
**MSHCP Criteria Areas and Cells**  
**MSHCP Biological Resources Technical**  
**Report for the Valley-Ivyglen**  
**Subtransmission Line Project, Phase 2**  
**Riverside County, California**

**Map 2**

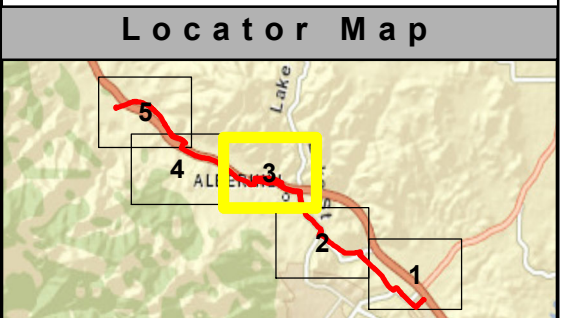
Path: Q:\NaturalResources\SCE\_ValleyIvyglen\mxd\2014\ReportsAndSubmissions\BTR\Phase2\Appendix C Criteria Area.mxd, aaron.johnson 9/12/2014





### Legend

- ★ Sensitive Species (AMEC 2014)
- ★ Sensitive Species (AMEC 2013)
- ★ Sensitive Species (AMEC 2012)
- ★ Sensitive Species (AMEC 2011)
- ★ Sensitive Species (AMEC 2010)
- ★ Sensitive Species (AMEC 2009)
- ★ Sensitive Species (AMEC 2008)
- ★ Sensitive Species (AMEC 2007)
- ★ Sensitive Species (AMEC 2006)
- SCE Subtransmission Centerline
- Area Plan Boundary
- Cell Group
- Criteria Cell
- Criteria Area
- Public or Quasi-public Conserved Lands
- Area Plan Subunit
- Burrowing Owl Survey Area
- Criteria Area Species Survey Area
- Narrow Endemic Plant Survey Area
- Proposed Schematic Cores
- Conserved Lands (MSHCP)
- Existing Cores & Linkages
- Proposed Linkage
- Proposed Constrained Linkage



amec 1 inch = 1,000 feet

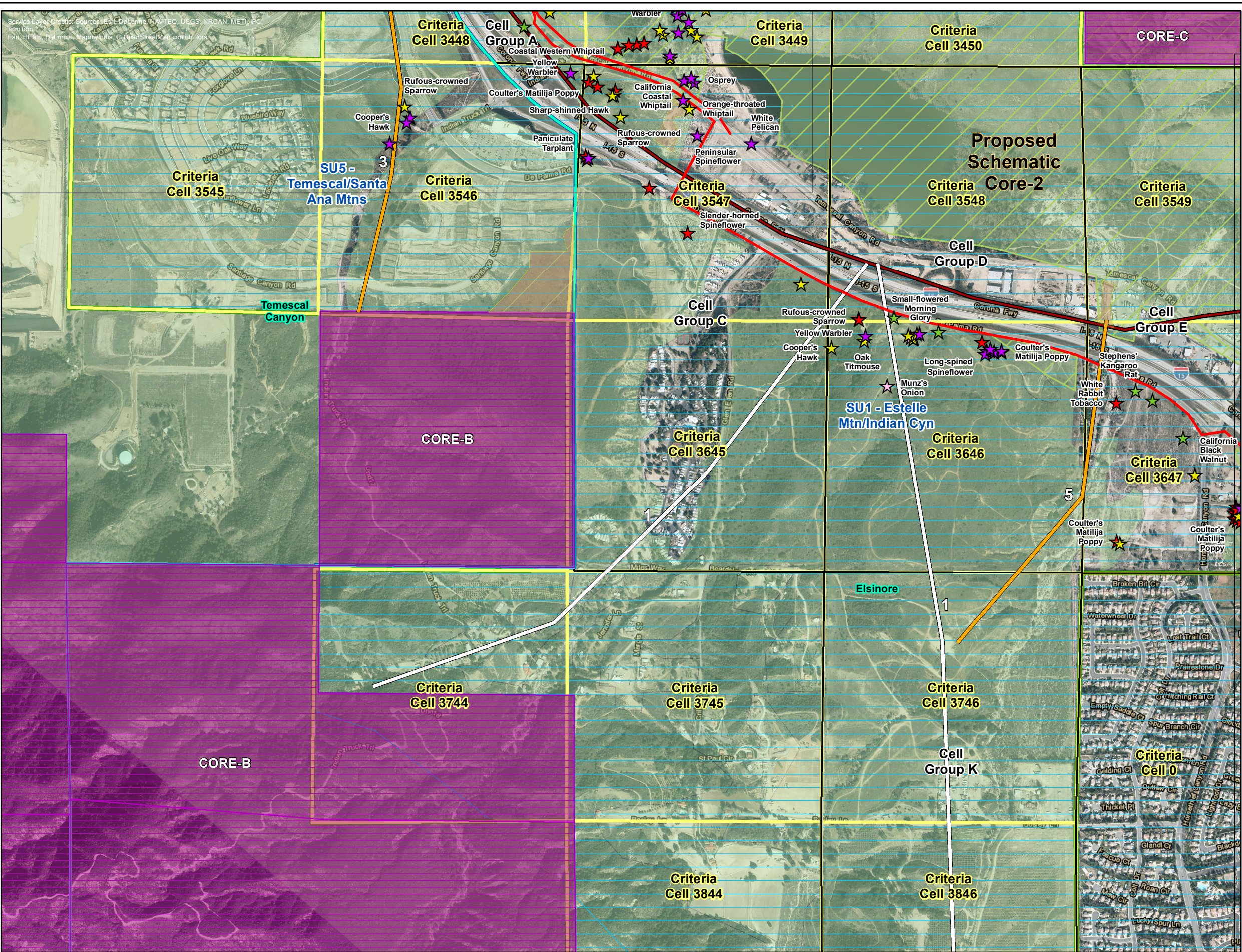
0 500 1,000 Feet

**Appendix C**  
**MSHCP Criteria Areas and Cells**  
**MSHCP Biological Resources Technical**  
**Report for the Valley-Ivyglen**  
**Subtransmission Line Project, Phase 2**  
**Riverside County, California**

**Map 3**

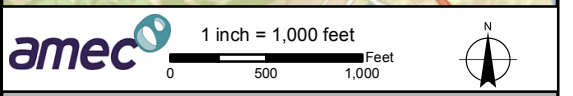
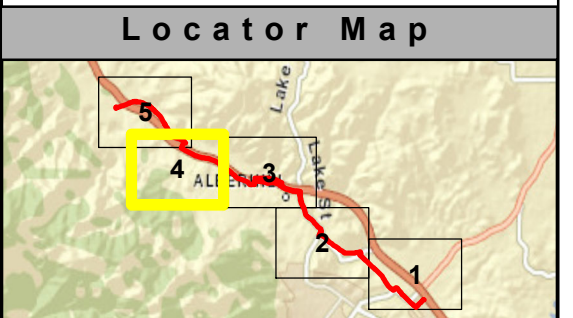


Service Layer Credits: Sources: Esri, DeLorme, NAVTEQ, USGS, NRCAN, METI, IPC, TomTom, Swatch, HERE, DeLorme, Mapbox, Mapbox Satellite, OpenStreetMap contributors



### Legend

- ★ Sensitive Species (AMEC 2014)
- ★ Sensitive Species (AMEC 2013)
- ★ Sensitive Species (AMEC 2012)
- ★ Sensitive Species (AMEC 2011)
- ★ Sensitive Species (AMEC 2010)
- ★ Sensitive Species (AMEC 2009)
- ★ Sensitive Species (AMEC 2008)
- ★ Sensitive Species (AMEC 2007)
- ★ Sensitive Species (AMEC 2006)
- SCE Subtransmission Centerline
- Area Plan Boundary
- Cell Group
- Criteria Cell
- Criteria Area
- Public or Quasi-public Conserved Lands
- Area Plan Subunit
- Burrowing Owl Survey Area
- Criteria Area Species Survey Area
- Narrow Endemic Plant Survey Area
- Proposed Schematic Cores
- Conserved Lands (MSHCP)
- Existing Cores & Linkages
- Proposed Linkage
- Proposed Constrained Linkage

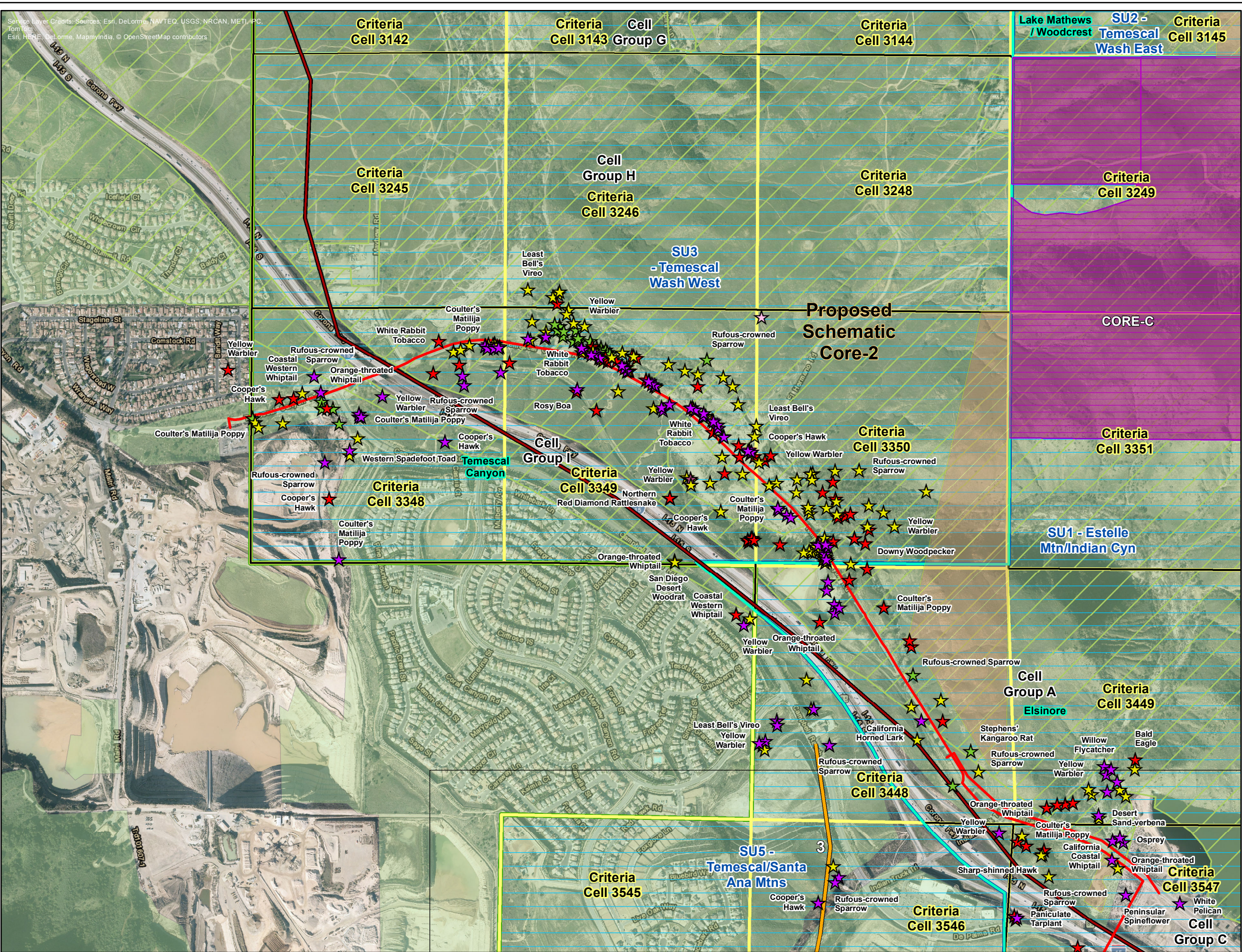


**Appendix C**  
**MSHCP Criteria Areas and Cells**  
**MSHCP Biological Resources Technical**  
**Report for the Valley-Ivyglen**  
**Subtransmission Line Project, Phase 2**  
**Riverside County, California**

**Map 4**

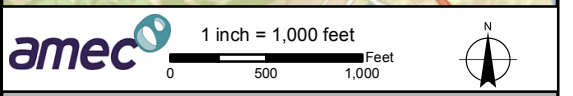
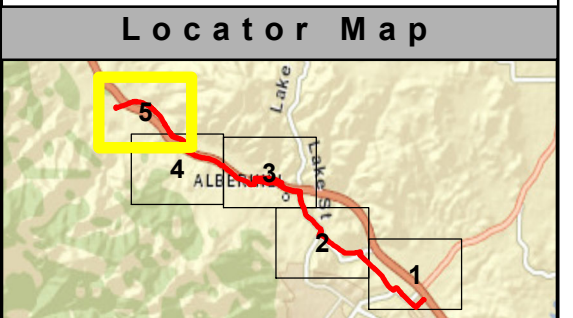


Service Layer Credits: Sources: Esri, DeLorme, NAVTEQ, USGS, NRCAN, METI, PC, TomTom, Esri, HERE, DeLorme, MapmyIndia, © OpenStreetMap contributors



### Legend

- ★ Sensitive Species (AMEC 2014)
- ★ Sensitive Species (AMEC 2013)
- ★ Sensitive Species (AMEC 2012)
- ★ Sensitive Species (AMEC 2011)
- ★ Sensitive Species (AMEC 2010)
- ★ Sensitive Species (AMEC 2009)
- ★ Sensitive Species (AMEC 2008)
- ★ Sensitive Species (AMEC 2007)
- ★ Sensitive Species (AMEC 2006)
- SCE Subtransmission Centerline
- Area Plan Boundary
- Cell Group
- Criteria Cell
- Criteria Area
- Public or Quasi-public Conserved Lands
- Area Plan Subunit
- Burrowing Owl Survey Area
- Criteria Area Species Survey Area
- Narrow Endemic Plant Survey Area
- Proposed Schematic Cores
- Conserved Lands (MSHCP)
- Existing Cores & Linkages
- Proposed Linkage
- Proposed Constrained Linkage



**Appendix C**  
**MSHCP Criteria Areas and Cells**  
**MSHCP Biological Resources Technical**  
**Report for the Valley-Ivyglen**  
**Subtransmission Line Project, Phase 2**  
**Riverside County, California**

**Map 5**