

**DRAFT**  
**RESULTS OF FOCUSED SURVEYS FOR THE LEAST BELL'S VIREO**  
**AND SOUTHWESTERN WILLOW FLYCATCHER FOR THE**  
**VALLEY-IVYGLEN SUBTRANSMISSION LINE PROJECT, PHASE I**  
**RIVERSIDE COUNTY, CALIFORNIA**



**Prepared for:**  
**Southern California Edison**  
**2244 Walnut Grove Avenue**  
**Rosemead, California 91770**

**Prepared by:**  
**AMEC Environment & Infrastructure, Inc.**  
**9210 Sky Park Court, Suite 200**  
**San Diego, California 92123**

**August 2012**  
**AMEC Project No. 1255400498**

---

## EXECUTIVE SUMMARY

---

At the request of Southern California Edison (SCE), AMEC Environment & Infrastructure, Inc. (AMEC) conducted focused surveys for the state and federally listed as endangered Least Bell's Vireo (*Vireo belli pusillus*) and Southwestern Willow Flycatcher (*Empidonax traillii extimus*). Surveys were conducted at suitable habitat patches along the Valley-Ivyglen Transmission Line Project, Phase I (see Appendix A, Figures 1-3). These patches are locations where these species have not been detected in previous survey years (AMEC 2007, 2009, 2010, 2011). The surveys were performed to satisfy requirements of the Western Riverside County Multiple Species Habitat Conservation Plan (MSHCP) (Riverside County 2003). No Least Bell's Vireos or Southwestern Willow Flycatchers were detected.

## TABLE OF CONTENTS

---

|  | <b>Page</b> |
|--|-------------|
| EXECUTIVE SUMMARY .....  | ES-1        |
| ACRONYMS AND ABBREVIATIONS.....                                | ii          |
| 1.0 INTRODUCTION.....  | 1-1         |
| 1.1 Project Description .....                                  | 1-1         |
| 1.2 Species Information: Least Bell's Vireo .....              | 1-1         |
| 1.3 Species Information: Southwestern Willow Flycatcher.....   | 1-2         |
| 2.0 METHODS .....  | 2-1         |
| 2.1 Least Bell's Vireo and Southwestern Willow Flycatcher..... | 2-1         |
| 3.0 RESULTS.....   | 3-1         |
| 3.1 Habitat Description .....                                  | 3-1         |
| 3.2 Survey Results .....                                       | 3-1         |
| 3.2.1 Southwestern Willow Flycatcher.....                      | 3-1         |
| 3.2.2 Least Bell's Vireo.....                                  | 3-1         |
| 4.0 LITERATURE CITED .....                                     | 4-1         |

## LIST OF TABLES

---

|          |   |     |
|----------|---|-----|
| Table 1. | Least Bell's Vireo and Southwestern Willow Flycatcher Survey Data ..... | 2-2 |
|----------|---|-----|

## LIST OF APPENDICES

---

|            |                   |
|------------|-------------------|
| APPENDIX A | FIGURES           |
| APPENDIX B | BIRD SPECIES LIST |
| APPENDIX C | SWF SURVEY FORMS  |
| APPENDIX D | CERTIFICATION     |

## ACRONYMS AND ABBREVIATIONS

---

|            |  |
|------------|--|
| AMEC       | AMEC Environment & Infrastructure, Inc.                |
| CDFG       | California Department of Fish and Game                 |
| °F         | degrees Fahrenheit                                     |
| kV         | kilovolt   |
| LBV        | Least Bell's Vireo                                     |
| mph        | miles per hour   |
| MSHCP      | Multiple Species Habitat Conservation Plan             |
| PST        | Pacific Standard Time                                  |
| project    | Valley-Ivyglen Transmission Line Project, Phase I      |
| ROW        | right-of-way   |
| SCE        | Southern California Edison                             |
| study area | project ROW and 500-foot buffer from centerline of ROW |
| SWF        | Southwestern Willow Flycatcher                         |
| USFWS      | United States Fish and Wildlife Service                |
| USGS       | United States Geological Survey                        |

## 1.0 INTRODUCTION

---

At the request of Southern California Edison (SCE), AMEC Environment & Infrastructure, Inc. (AMEC) conducted focused surveys for the state and federally listed as endangered Least Bell's Vireo (*Vireo belli pusillus*) and Southwestern Willow Flycatcher (*Empidonax traillii extimus*). Surveys were conducted at suitable habitat patches along the Valley-Ivyglen Transmission Line Project, Phase I (see Figures 1-3). These patches are locations where these species have not been detected in previous survey years (AMEC 2007, 2009, 2011). The surveys were performed to satisfy requirements of the Western Riverside County Multiple Species Habitat Conservation Plan (MSHCP) (Riverside County 2003). This report presents the findings of those focused surveys

### 1.1 Project Description

The proposed project has been divided into two portions: eastern (Phase I) and western (Phase II). Phase I extends from the Valley Substation in the City of Menifee southwest to the corner of Collier Avenue and Third Street in the City of Lake Elsinore. The Valley Substation is located in the City of Menifee on the west side of Menifee Road between McLaughlin and Ethanac Roads. Phase II extends from that corner northwest to the Ivyglen Substation in the City of Corona. The proposed project is designed to improve reliability and meet projected electrical load requirements in western Riverside County, and involves the eventual construction of a new 115 kilovolt (kV) transmission line between the Valley and Ivyglen Substations.

The proposed Phase I transmission line route (project) is located entirely in western Riverside County, California. It traverses portions of unincorporated county and the cities of Menifee, Perris, and Lake Elsinore (Appendix A-Figure 1). The route traverses portions of the Lake Elsinore and Romoland United States Geological Survey (USGS) 7.5-minute series topographic quadrangles (Appendix A-Figure 3).

This report concerns focused surveys conducted within the Phase I portion of the project area; Phase II will not be discussed further. Appropriate habitat was surveyed along the proposed transmission line right-of-way (ROW) and a 500-foot buffer from the centerline of the proposed ROW (study area), with the exception of areas that already have established occurrences of Least Bell's Vireos.

The study area is located within the Western Riverside County Multiple Species Habitat Conservation Plan (MSHCP). The MSHCP is a comprehensive, multi-jurisdictional Habitat Conservation Plan, which focuses on conservation of species and their associated habitats in western Riverside County (Riverside County 2003).

### 1.2 Species Information: Least Bell's Vireo

Least Bell's Vireo (LBV) is a small, migratory, insectivorous bird which occurs in willow-dominated riparian habitats. Although this bird is drab in plumage and can be secretive within its densely vegetated habitat, males are easy to detect on the breeding grounds due to their conspicuous and diagnostic song. Nesting habitat of this species is restricted to willow and/or mulefat dominated riparian scrub along permanent or nearly permanent streams (Grinnell and Miller 1944, Goldwasser 1978, Franzreb 1987, Garrett and Dunn 1981).

Least Bell's Vireos were formerly widespread and common throughout low-lying riparian habitats of central and southern California, but are now restricted to a limited number of locations in southern California. Habitat reduction has contributed to this species' significant population declines. Nest parasitism by Brown-headed Cowbirds (*Molothrus ater*) has also seriously impacted reproductive success by Least Bell's Vireo, as well as many other species which build cup nests (Goldwasser 1978). The population is slowly recovering as a result of habitat restoration and cowbird control efforts. Least Bell's Vireo is listed as Endangered by the California Department of Fish and Game (CDFG) and by the United States Fish and Wildlife Service (USFWS) (USFWS 1986). A final determination of critical habitat was made in 1994 (USFWS 1994). The project area is not within designated critical habitat for the Least Bell's Vireo.

### **1.3 Species Information: Southwestern Willow Flycatcher**

The Southwestern Willow Flycatcher (SWF) is a small, brownish-olive flycatcher that was formerly considered a common summer resident in southern California's lowland willow thickets and in low elevation mountain canyons (Garrett and Dunn 1981). Following the large-scale invasion of southern California by Brown-headed Cowbirds in the 1920s, along with loss of willow riparian habitat, this subspecies was nearly extirpated from southern California. The Willow Flycatcher was listed by the State of California as endangered in 1990. The subspecies *E. t. extimus* (Southwestern Willow Flycatcher) is listed as federally endangered (USFWS 1995). Critical habitat was designated for this species in 1997 (USFWS 1997), then revised and finalized again in 2005 (USFWS 2005). New revisions to critical habitat have been proposed (USFWS 2011), but not finalized. The project area is not within currently designated or proposed critical habitat for the SWF.

Surveys have revealed populations along the Santa Margarita and San Luis Rey Rivers in San Diego County, in the San Bernardino Mountains and along the Mojave River in San Bernardino County, the Santa Ynez River in Santa Barbara County, the Santa Clara River in Los Angeles and Ventura counties, the South Fork of the Kern River in Kern County (Unitt 1987, Marshall 2000), and the Prado Basin and San Timoteo Creek in western Riverside County (J. Pike, Orange County Water District; R. McKernan, San Bernardino County Museum: pers. comm.). This subspecies also persists in the Lower Colorado River Valley (Marshall 2000, R. McKernan, pers. comm.). Unlike LBVs, SWF populations do not appear to have gained any significant benefit from habitat restoration and cowbird control efforts.

The Southwestern Willow Flycatcher breeds in dense riparian habitats near surface water or saturated soil. Plant composition and habitat structure can vary greatly depending on the site, but willows often make up much of the understory. Populations along the Colorado River are known to use thickets dominated by both native and nonnative plants (especially Salt-Cedar [*Tamarix* spp.]). Dense patches of understory vegetation are a critical component of occupied habitat (Sogge *et al.* 1997).

## 2.0 METHODS

---

### 2.1 Least Bell's Vireo and Southwestern Willow Flycatcher

Areas considered to contain suitable habitat along the project route are:

1. Goldenrod Avenue: approximate UTM of survey area: Zone 11, 478950E, 3732690N (NAD27). This point occurs on lands mapped on the USGS 7.5 minute *Romoland, Calif* quadrangle. See Appendix A-Figures 1, 2A, and 3A.
2. Alabaster Loop: approximate UTM of survey area: Zone 11, 478330E, 3732650N (NAD27). This point occurs on lands mapped on the USGS 7.5 minute *Romoland, Calif* quadrangle. See Appendix A, Figures 1, 2B, and 3A.
3. Peach Street: approximate UTM at north end of survey area: Zone 11, 472580E, 3730997N (NAD27); approximate UTM at south end of survey area: Zone 11, 472612E, 3730803N (NAD27). These points occur on lands mapped on the USGS 7.5 minute *Lake Elsinore, Calif.* quadrangle. See Appendix A, Figures 1, 2C, and 3B.
4. Wasson Canyon: approximate UTM at north end of survey area: Zone 11, 472339E, 3730799N (NAD27); approximate UTM at south end of survey area: Zone 11, 472425E, 3730494N (NAD27). These points occur on lands mapped on the USGS 7.5 minute *Lake Elsinore, Calif.* quadrangle. Report cover photo is of this survey area, taken from the south end looking north. Also see Appendix A, Figures 1, 2D, and 3B.
5. Rosetta Canyon: approximate UTM at west end of survey area: Zone 11, 469844E, 3729121N (NAD27); approximate UTM at east end of survey area: Zone 11, 469995E, 3729143N (NAD27). These points occur on lands mapped on the USGS 7.5 minute *Lake Elsinore, Calif.* quadrangle. See Appendix A, Figures 1, 2E, and 3B.

In accordance with the currently accepted survey protocol for the Least Bell's Vireo (USFWS 2001), each site was surveyed eight times by AMEC biologists. The LBV protocol requires surveys to be conducted at least 10 days apart from 10 April to 31 July. The SWF protocol requires five surveys, and that the first survey be performed from 15 May to 31 May, the next two surveys from 1 June to 24 June, and the final two surveys between 25 June and 17 July (Sogge et al. 2010). The SWF surveys were performed concurrently with LBV surveys.

Surveys consisted of slowly moving through the habitat while listening for the songs and calls of the two target species. During the SWF surveys, recordings of their vocalizations were broadcast as required by protocol. All bird species detected during the surveys were recorded in field notes (Appendix B). Field forms are presented in Appendix C.

Due to the small size of the riparian patches, all survey areas were surveyed in a single morning on each visit. Surveys were performed by Chet McGaugh (federal Endangered Species Permit TE836517-6), Stephen J. Myers (TE804203-9), and John F. Green (TE054011-5). Table 1 summarizes the surveys. The survey areas are illustrated in Appendix A on Figures 2A through 2E (aerial photos) and 3A through 3B (USFWS required topographic maps).

**Table 1.**  
**Least Bell's Vireo and Southwestern Willow Flycatcher Survey Data**

| Date          | Observer         | Time (PST) | Temp. (°F) | Wind (mph) | Sky (% cover) |
|---------------|------------------|------------|------------|------------|---------------|
| 10 April 2012 | Stephen J. Myers | 0620-1045  | 55-73      | 0-6        | 0             |
| 20 April 2012 | Chet McGaugh     | 0520-1000  | 56         | 0-3        | 0             |
| 3 May 2012    | Chet McGaugh     | 0605-1045  | 58         | -          | 100           |
| 15 May 2012†  | John F. Green    | 0605-0850  | -          | -          | 0             |
| 4 June 2012†  | Chet McGaugh     | 0510-0950  | 61-76      | 0-4        | 100-clearing  |
| 14 June 2012† | Chet McGaugh     | 0525-0950  | 54-82      | 0-3        | 100           |
| 28 June 2012† | John F. Green    | 0545-0810  | 63-79      | 0-3        | 0             |
| 9 July 2012†  | Stephen J. Myers | 0445-0945  | 66-93      | 0-3        | 0             |

Notes:

† SWF and LBV surveys conducted concurrently. Other surveys were for LBV only.



## **3.0 RESULTS**

---

### **3.1 Habitat Description**

The five survey areas are all vegetated with plants typical of lowland riparian areas in Southern California, including willows (*Salix* spp.), Mulefat (*Baccharis salicifolia*), and Fremont Cottonwoods (*Populus fremontii*). The Goldenrod survey area was part of a poorly defined drainage in the past (judging from topographic maps and old aerial photos), but probably did not support riparian vegetation. Runoff from new housing developments has created and sustained this patch, and surface water was present throughout the survey season. The Alabaster survey area is on a former mapped blueline intermittent stream (see Appendix A, Figure 3A), but again likely did not support riparian vegetation in the past. The drainage was highly modified by development, and the riparian patch is sustained by runoff. Surface water was present throughout the survey season. The Peach Street survey area was also part of a poorly defined drainage in the past which probably did not support riparian vegetation. Runoff from Highway 74 and rural residential in the area now sustains the riparian vegetation here, and surface water was present throughout the survey season. The Wasson Canyon survey area is in a relatively large and well defined drainage, but is mapped as an intermittent stream. It certainly gains some water from Highway 74 and rural residences, but rarely contains surface water. It may have historically sustained riparian vegetation. Surface water was present only in patches early in the survey season. Finally, the Rosetta Canyon survey area was part of yet another poorly defined drainage in the past which probably did not support riparian vegetation. Runoff from Highway 74 and rural residences and businesses now sustain riparian vegetation on the north side of the highway, and a new patch has developed on the south side which was once scraped bare several years ago. Surface water was present throughout the survey season.

### **3.2 Survey Results**

Seventy-two bird species were detected during the 2012 Phase I riparian birds focused surveys. Among the most frequently detected species were the following birds that are typical of lowland riparian habitats in southern California: Mourning Dove (*Zenaida macroura*), Black-chinned Hummingbird (*Archilochus alexandri*), Nuttall's Woodpecker (*Picoides nuttallii*), Black Phoebe (*Sayornis nigricans*), Bushtit (*Psaltriparus minimus*), House Wren (*Troglodytes aedon*), Yellow Warbler (*Setophaga petechia*), Common Yellowthroat (*Geothlypis trichas*), Song Sparrow (*Melospiza melodia*), and Lesser Goldfinch (*Spinus psaltria*).

#### **3.2.1 Southwestern Willow Flycatcher**

No Southwestern Willow Flycatchers or any other subspecies of Willow Flycatcher were detected at any of the survey areas.

#### **3.2.2 Least Bell's Vireo**

No Least Bell's Vireos were detected at any of the survey areas.

#### 4.0 LITERATURE CITED

---

- AMEC. 2011. Valley-Ivyglen Transmission Line Project, 2011 Focused Surveys for Least Bell's Vireo, Southwestern Willow Flycatcher, and Western Yellow-billed Cuckoo. Unpublished report prepared for SCE.
- AMEC. 2009. 2009 Focused Surveys for the Least Bell's Vireo and Southwestern Willow Flycatcher, Valley-Ivyglen Subtransmission Line Project. Unpublished report prepared for SCE.
- AMEC. 2007. Focused Surveys for the Least Bell's Vireo, Southwestern Willow Flycatcher, and Western Yellow-billed Cuckoo for the Valley-Ivyglen Transmission Line Project. Unpublished report prepared for SCE.
- Franzreb, K.E. 1987. Endangered status and strategies for conservation of the Least Bell's Vireo (*Vireo bellii pusillus*) in California. *W. Birds* 18:43-49.
- Garrett, K. and J. Dunn. 1981. *Birds of southern California: Status and distribution*. Los Angeles Audubon Soc., Los Angeles, CA.
- Goldwasser, S. 1978. Distribution, reproductive success, and impact of nest parasitism by Brown-headed Cowbirds on Least Bell's Vireos. Unpublished report prepared for the Resources Agency, California Department of Fish and Game, Sacramento, CA.
- Grinnell, J. and A.H. Miller. 1944. The Distribution of the Birds of California. *Pac. Coast Avif.* 27.
- Marshall, R.M. 2000. Population status on breeding grounds. Pp. 3-11 *in* Status, ecology, and conservation of the Southwestern Willow Flycatcher (Finch, D.M. and S.H. Stoleson, eds.). Gen. Tech. Rpt. RMRS-GTR-60, U.S. Dept. of Agriculture, Forest Service, Rocky Mountain Research Station, Ogden, UT.
- Riverside County Integrated Project. 2003. MSHCP Final Documents. Online at: <http://www.rcip.org/conservation.htm>
- Sogge, M.K., D. Ahlers, and S.J. Sferra. 2010. A natural history summary and survey protocol for the Southwestern Willow Flycatcher. U.S. Geological Survey Techniques and Methods 2A-10, 38 pgs.
- Sogge, M.K., R.M. Marshall, S.J. Sferra, and T.J. Tibbitts. 1997. A Southwestern Willow Flycatcher natural history summary and survey protocol. Technical report NPS/NAUCPRS/NRTR-97/12, National Park Service, Denver.
- USFWS. 2011. Endangered and Threatened Wildlife and Plants; Designation of Revised Critical Habitat for Southwestern Willow Flycatcher. Proposed Rule. *Federal Register*. Vol. 76, Pgs. 50542-50629.
- USFWS. 2005. Endangered and Threatened Wildlife and Plants; Designation of Critical Habitat for the Southwestern Willow Flycatcher (*Empidonax traillii extimus*). Final Rule. *Federal Register*. Vol. 70, Pgs. 60885-61009.
- United States Fish and Wildlife Service. 2001. Least Bell's Vireo survey guidelines. Ecological Services, Carlsbad Fish and Wildlife Office, Carlsbad, CA.

- USFWS. 1997. Final Determination of Critical Habitat for the Southwestern Willow Flycatcher. *Federal Register*. Vol. 62, Pgs. 39129-39147.
- USFWS. 1995. Endangered and Threatened Wildlife and Plants; Final Rule Determining Endangered Status for the Southwestern Willow Flycatcher. *Federal Register*. Vol. 60, No. 38.
- USFWS. 1994. Endangered and Threatened Wildlife and Plants; Designation of Critical Habitat for the Least Bell's Vireo. *Federal Register*. Vol. 59, No. 22.
- USFWS. 1986. Endangered and Threatened Wildlife and Plants; Determination of Endangered Status for the Least Bell's Vireo, Final Rule. *Federal Register*. Vol. 51.
- United States Fish and Wildlife Service. 1994. Endangered and Threatened Wildlife and Plants; Designation of Critical Habitat for the Least Bell's Vireo; Final Rule. *Federal Register* 59:4845-4867.
- Unitt, P. 1987. *Empidonax traillii extimus*: An endangered subspecies. *W. Birds* 18:137-162.

## **APPENDIX A**

### **FIGURES**



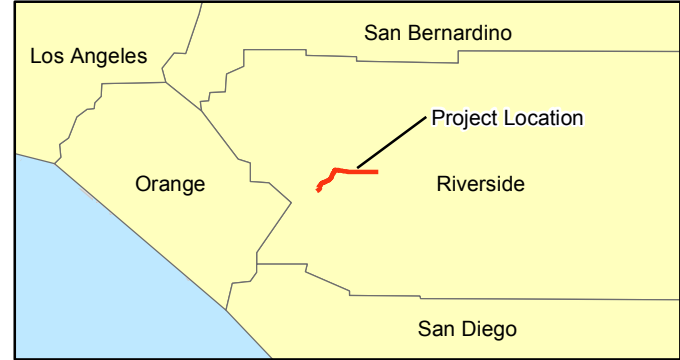
### Legend

- Survey Area
- Phase I Transmission Line Route

### Vicinity Map

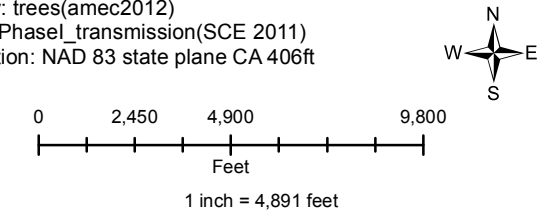


### Regional Map



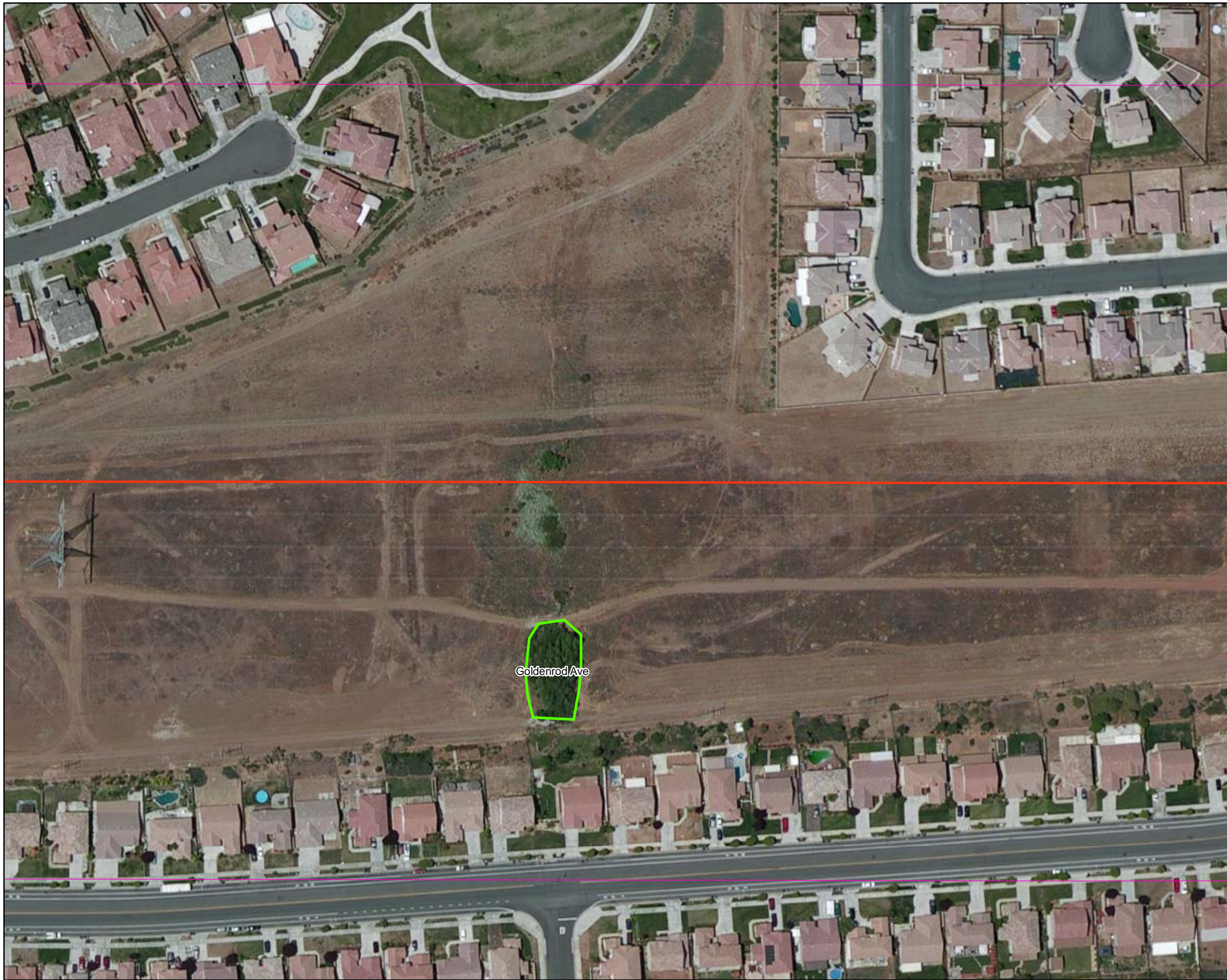
#### Map Notes-

Source: S:\active projects\SCE Projects\Valley-Ivyglen  
 2012 Phase I 12-554-00498\2012 riparian birds draft\  
 Riparian Birds Maps-Phase I  
 Survey: trees(amec2012)  
 Route: Phase I transmission(SCE 2011)  
 Projection: NAD 83 state plane CA 406ft



**Figure 1**  
 2012 Riparian Bird Focused Surveys  
 Valley-Ivyglen Transmission Line Project: Phase I





### Legend

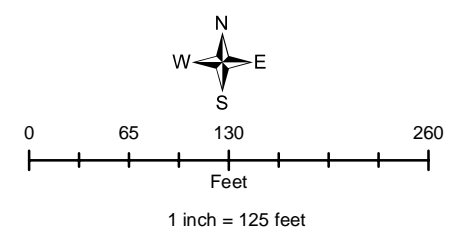
- Survey Area
- Phase I Transmission Line Route
- 2012 Study Area

### Locator Map



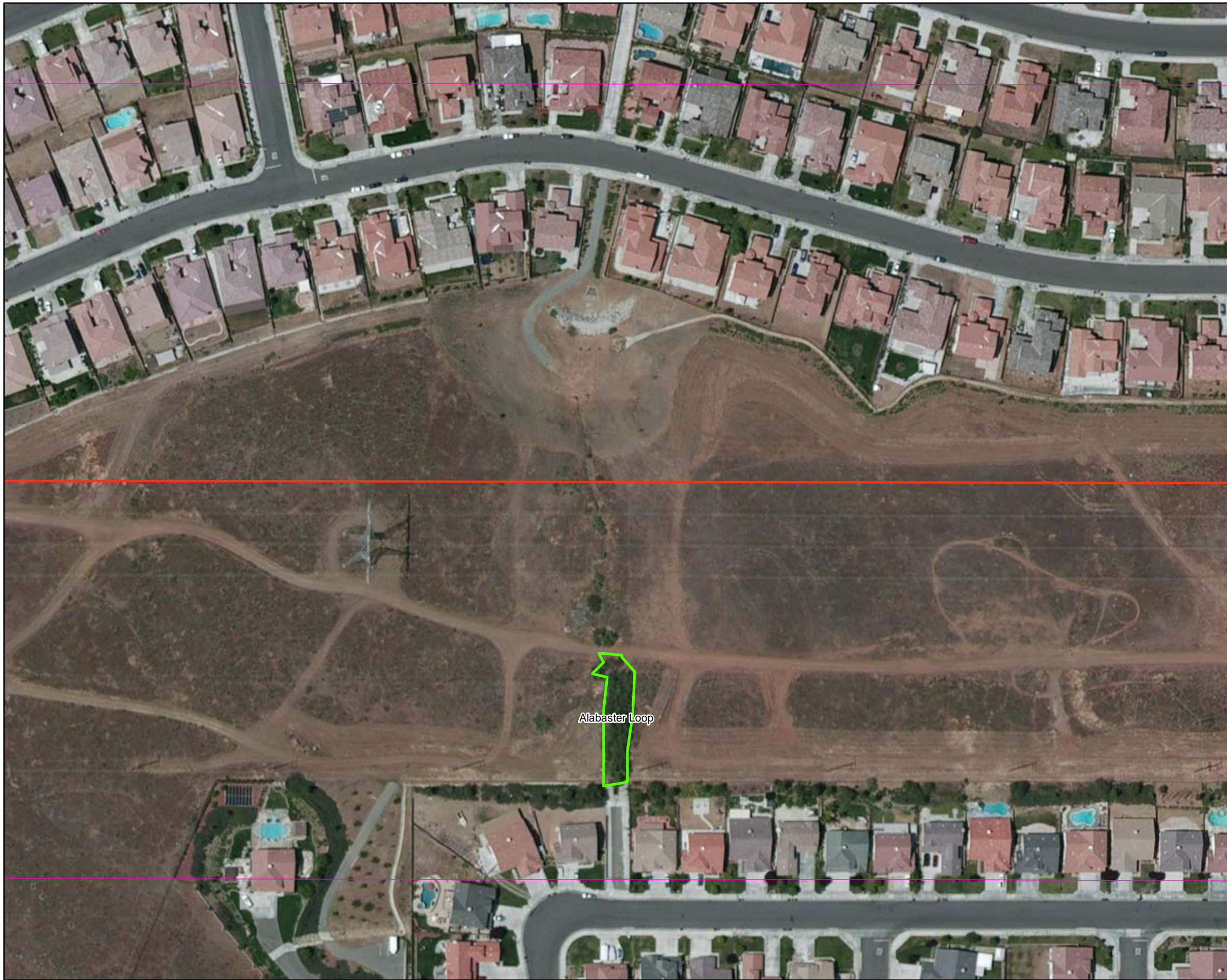
### Map Notes-

Source: S:\active projects\SCE Projects\Valley-Ivyglen 2012 Phase I 12-554-00498\2012 riparian birds draft\Riparian Birds Maps-Phase I Survey: trees(amec2012)  
 Route: PhaseI\_transmission(SCE 2011)  
 Projection: NAD 83 state plane CA 406ft



**Figure 2 A**  
 2012 Riparian Bird Focused Surveys  
 Valley-Ivyglen Transmission Line Project: Phase I





**Legend**

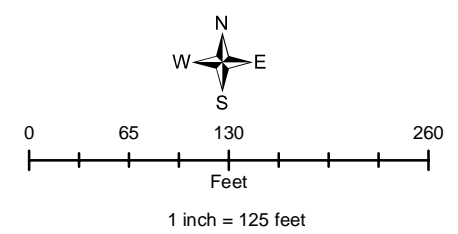
- Survey Area
- Phase I Transmission Line Route
- 2012 Study Area

**Locator Map**



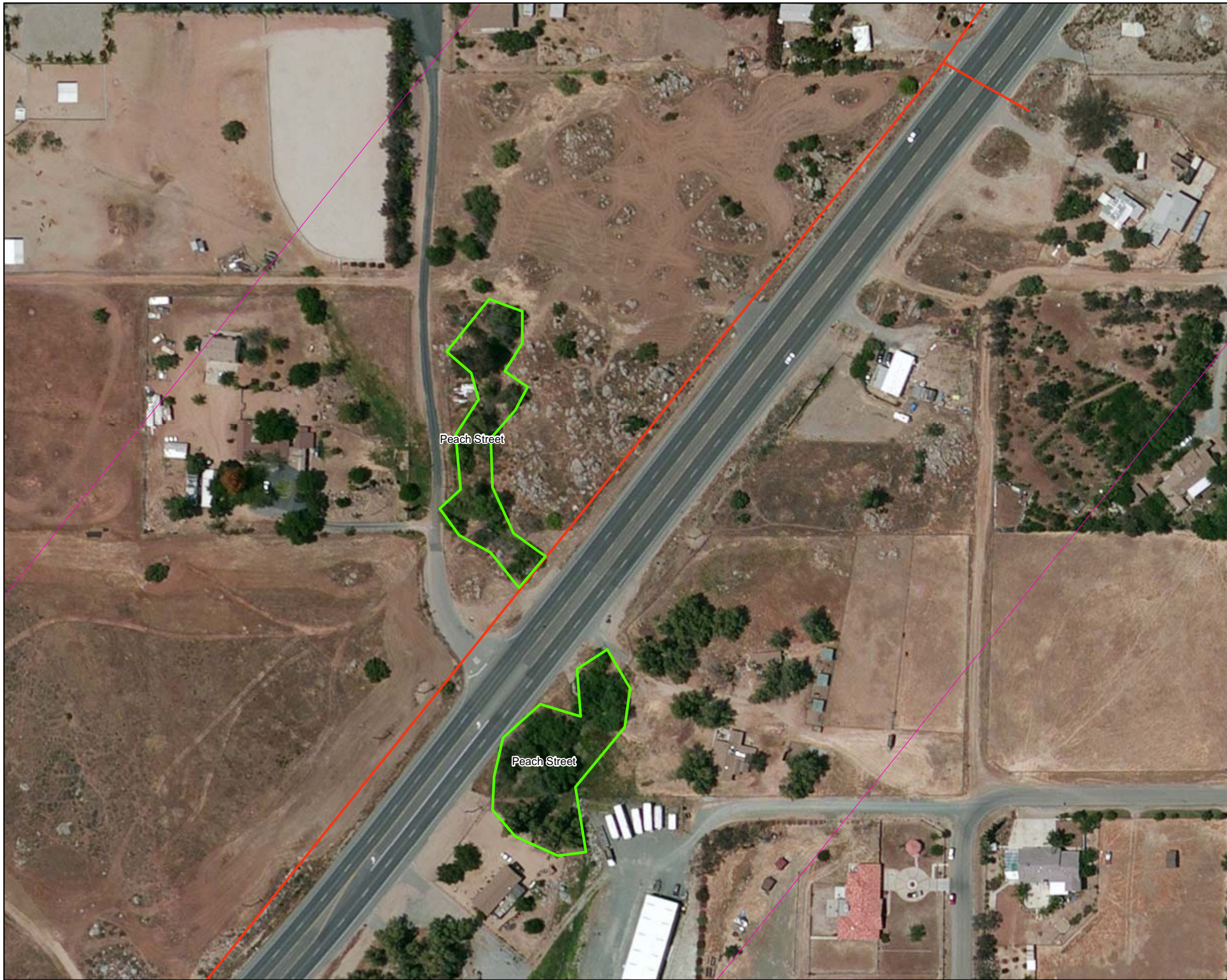
**Map Notes-**

Source: S:\active projects\SCE Projects\Valley-Ivyglen 2012 Phase I 12-554-00498\2012 riparian birds draft\Riparian Birds Maps-Phase I Survey: trees(amec2012)  
 Route: Phase I transmission(SCE 2011)  
 Projection: NAD 83 state plane CA 406ft



**Figure 2 B**  
 2012 Riparian Bird Focused Surveys  
 Valley-Ivyglen Transmission Line Project: Phase I





### Legend

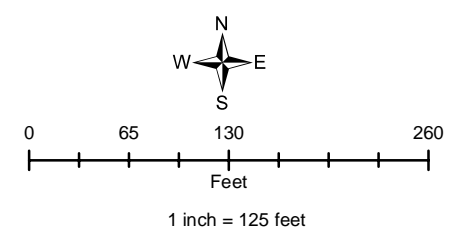
- Survey Area
- Phase I Transmission Line Route
- 2012 Study Area

### Locator Map



#### Map Notes-

Source: S:\active projects\SCE Projects\Valley-Ivyglen 2012 Phase I 12-554-00498\2012 riparian birds draft\Riparian Birds Maps-Phase I Survey: trees(amec2012)  
 Route: PhaseI\_transmission(SCE 2011)  
 Projection: NAD 83 state plane CA 406ft



**Figure 2 C**  
 2012 Riparian Bird Focused Surveys  
 Valley-Ivyglen Transmission Line Project: Phase I







### Legend

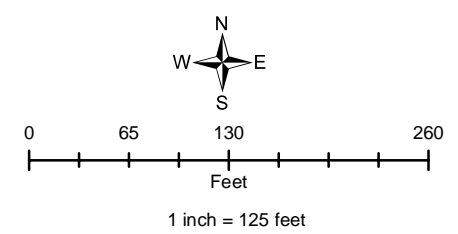
- Survey Area
- Phase I Transmission Line Route
- 2012 Study Area

### Locator Map



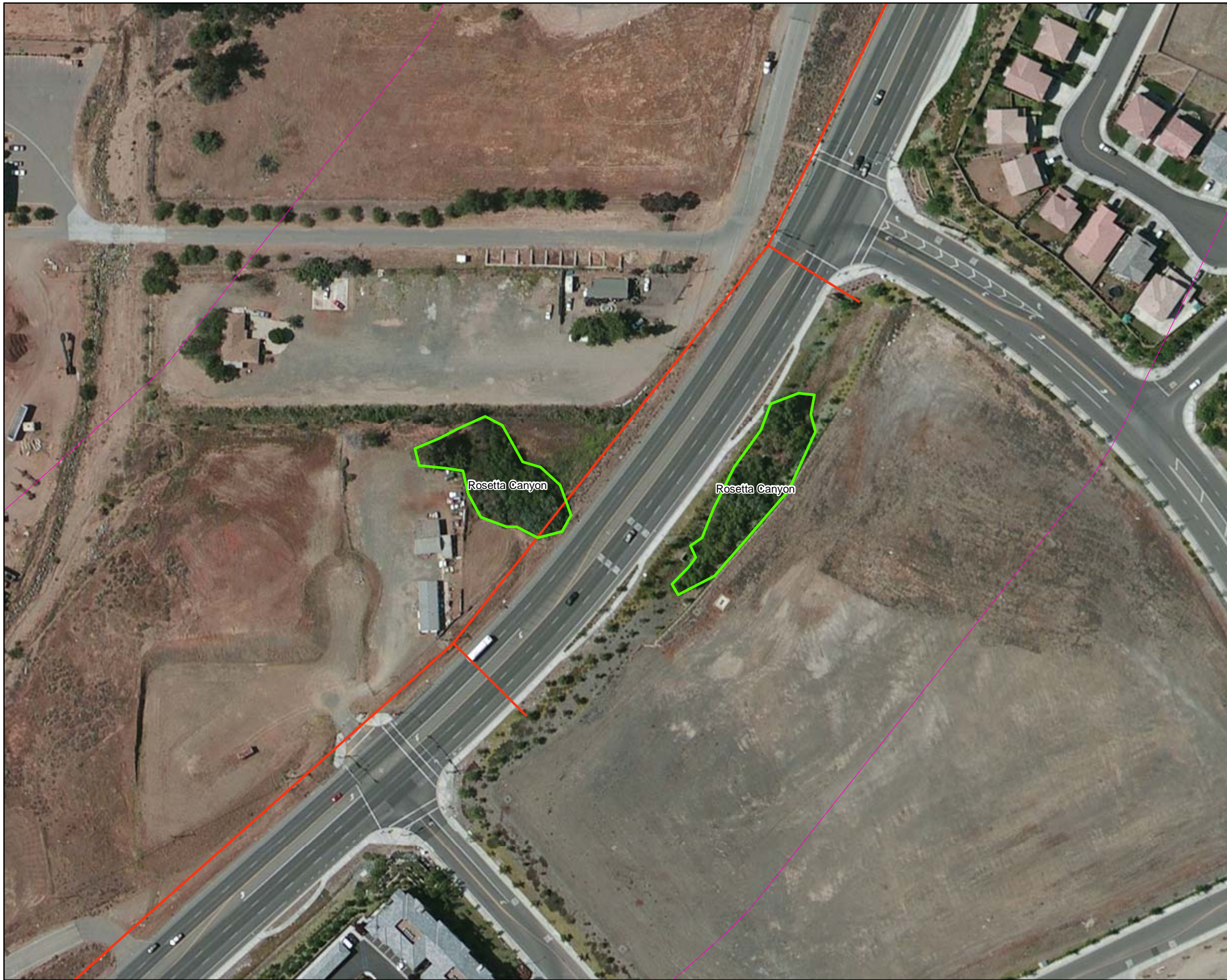
#### Map Notes-

Source: S:\active projects\SCE Projects\Valley-Ivyglen 2012 Phase I 12-554-00498\2012 riparian birds draft\Riparian Birds Maps-Phase I Survey: trees(amec2012)  
 Route: Phase I\_transmission(SCE 2011)  
 Projection: NAD 83 state plane CA 406ft



**Figure 2D**  
 2012 Riparian Bird Focused Surveys  
 Valley-Ivyglen Transmission Line Project: Phase I





### Legend

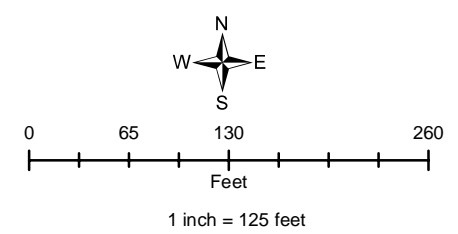
- Survey Area
- Phase I Transmission Line Route
- 2012 Study Area

### Locator Map



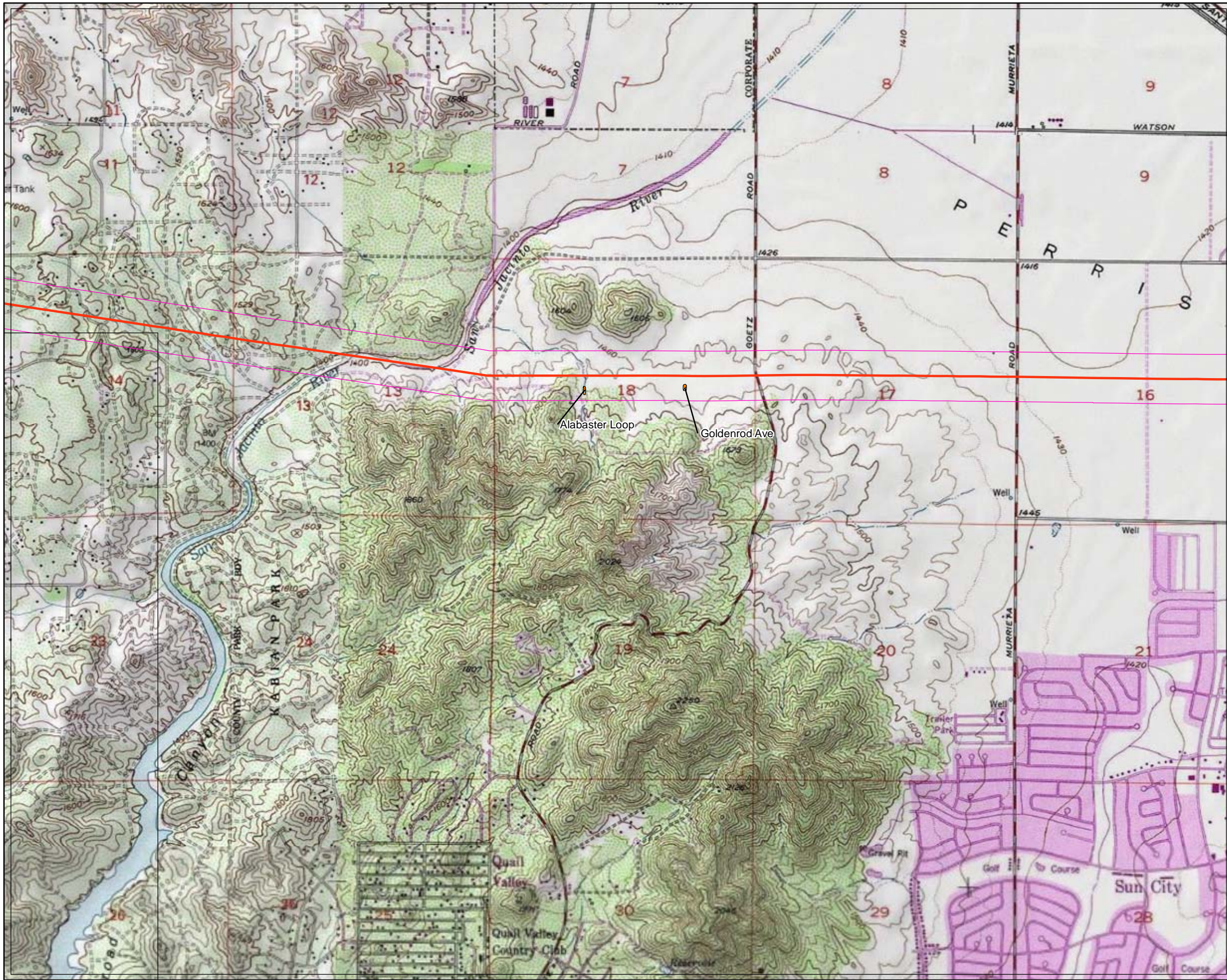
#### Map Notes-

Source: S:\active projects\SCE Projects\Valley-Ivyglen 2012 Phase I 12-554-00498\2012 riparian birds draft\Riparian Birds Maps-Phase I Survey: trees(amec2012)  
 Route: Phase I transmission(SCE 2011)  
 Projection: NAD 83 state plane CA 406ft






**Figure 2 E**  
 2012 Riparian Bird Focused Surveys  
 Valley-Ivyglen Transmission Line Project: Phase I

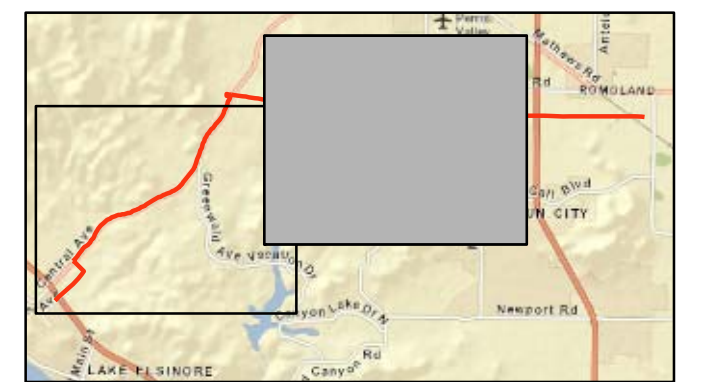




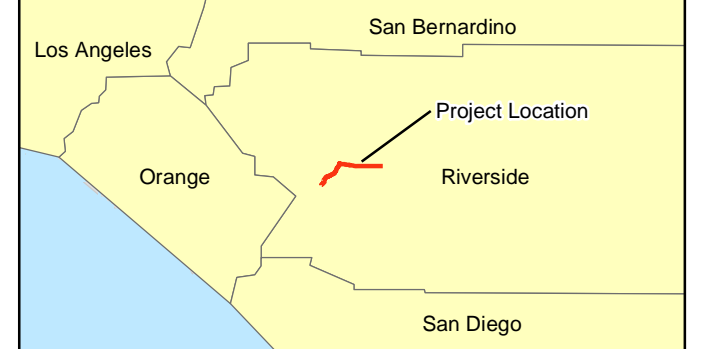
### Legend

-  Survey Area
-  Phase I Transmission Line Route
-  2012 Study Area

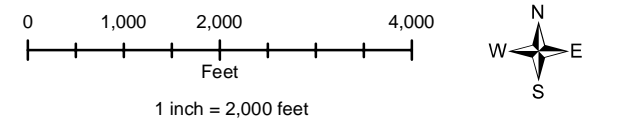
### Locator Map



### Regional Map



**Map Notes-**  
 Source: S:\active projects\SCE Projects\Valley-Ivyglen 2012 Phase I 12-554-00498\2012 riparian birds draft\Riparian Birds Maps-Phase I Survey: trees(amec2012)  
 Route: Phasel\_transmission(SCE 2011)  
 USGS: Topo 7.5' Romoland & Lake Elsinore quad  
 Projection: NAD 83 state plane CA 406ft






**Figure 3A**  
**Survey Areas**  
 2012 Riparian Bird Focused Surveys  
 Valley-Ivyglen Transmission Line Project: Phase I

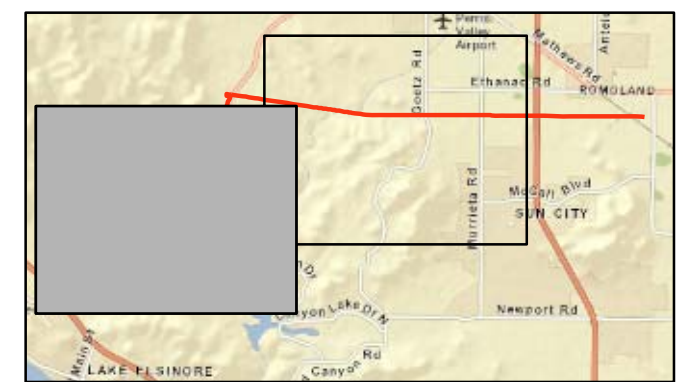




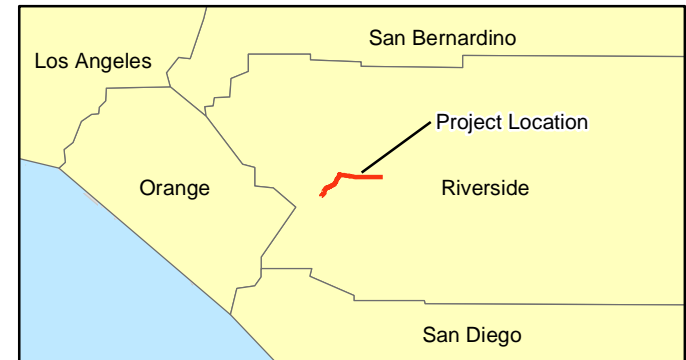
### Legend

-  Survey Area
-  Phase I Transmission Line Route
-  2012 Study Area

### Locator Map

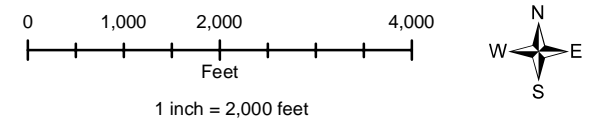


### Regional Map



### Map Notes-

Source: S:\active projects\SCE Projects\Valley-Ivyglen 2012 Phase I 12-554-00498\2012 riparian birds draft\Riparian Birds Maps-Phase I Survey: trees(amec2012)  
 Route: Phasel\_transmission(SCE 2011)  
 USGS: Topo 7.5' Romoland & Lake Elsinore quad  
 Projection: NAD 83 state plane CA 406ft



**Figure 3B**  
**Survey Areas**  
 2012 Riparian Bird Focused Surveys  
 Valley-Ivyglen Transmission Line Project: Phase I



## **APPENDIX B**

### **BIRD SPECIES LIST**

## BIRD SPECIES LIST

This list reports only bird species which were observed along the Phase I project alignment during 2012 focused riparian bird surveys. Nomenclature and taxonomy for birds observed on site follows the American Ornithologists' Union Checklist (1998) and its supplements.

### SYMBOLS AND ABBREVIATIONS:

- sp. Identified only to genus; species unknown (plural = spp.)  
 \* Non-native species  
 \*\* Sensitive species (State or Federally Listed as Threatened or Endangered, or a CDFG Species of Special Concern / Watch List Species, or a USFWS Bird of Conservation Concern)

| BIRDS                               | AVES                           |
|-------------------------------------|--------------------------------|
| <b>New World Quail</b>              | <b>Odontophoridae</b>          |
| California Quail                    | <i>Callipepla californica</i>  |
| <b>Bitterns and Herons</b>          | <b>Ardeidae</b>                |
| Great Blue Heron                    | <i>Ardea herodias</i>          |
| Great Egret                         | <i>Ardea alba</i>              |
| <b>American Vultures</b>            | <b>Cathartidae</b>             |
| Turkey Vulture                      | <i>Cathartes aura</i>          |
| <b>Hawks, Kites, Eagles</b>         | <b>Accipitridae</b>            |
| **White-tailed Kite                 | <i>Elanus leucurus</i>         |
| **Cooper's Hawk                     | <i>Accipiter cooperii</i>      |
| Red-shouldered Hawk                 | <i>Buteo lineatus</i>          |
| Red-tailed Hawk                     | <i>Buteo jamaicensis</i>       |
| <b>Falcons</b>                      | <b>Falconidae</b>              |
| American Kestrel                    | <i>Falco sparverius</i>        |
| <b>Plovers and Lapwings</b>         | <b>Charadriidae</b>            |
| Killdeer                            | <i>Charadrius vociferus</i>    |
| <b>Gulls, Terns, and Skimmers</b>   | <b>Laridae</b>                 |
| Ring-billed or California Gull      | <i>Larus sp.</i>               |
| <b>Pigeons and Doves</b>            | <b>Columbidae</b>              |
| *Rock Pigeon                        | <i>Columba livia</i>           |
| *Eurasian Collared-Dove             | <i>Streptopelia decaocto</i>   |
| Mourning Dove                       | <i>Zenaida macroura</i>        |
| <b>Cuckoos, Roadrunners, Allies</b> | <b>Cuculidae</b>               |
| Greater Roadrunner                  | <i>Geococcyx californianus</i> |
| <b>Swifts</b>                       | <b>Apodidae</b>                |
| White-throated Swift                | <i>Aeronautes saxatalis</i>    |

| <b>BIRDS</b>                               | <b>AVES</b>                       |
|--|-----------------------------------|
| <b>Hummingbirds</b>                        | <b>Trochilidae</b>                |
| Black-chinned Hummingbird                  | <i>Archilochus alexandri</i>      |
| Anna's Hummingbird                         | <i>Calypte anna</i>               |
| <b>Woodpeckers and Allies</b>              | <b>Picidae</b>                    |
| Nuttall's Woodpecker                       | <i>Picoides nuttallii</i>         |
| Downy Woodpecker                           | <i>Picoides pubescens</i>         |
| Northern Flicker                           | <i>Colaptes auratus</i>           |
| <b>Flycatchers</b>                         | <b>Tyrannidae</b>                 |
| Black Phoebe                               | <i>Sayornis nigricans</i>         |
| Say's Phoebe                               | <i>Sayornis saya</i>              |
| Ash-throated Flycatcher                    | <i>Myiarchus cinerascens</i>      |
| Cassin's Kingbird                          | <i>Tyrannus vociferus</i>         |
| Western Kingbird                           | <i>Tyrannus verticalis</i>        |
| <b>Vireos</b>                              | <b>Vireonidae</b>                 |
| Warbling Vireo                             | <i>Vireo gilvus</i>               |
| <b>Jays, Magpies and Crows</b>             | <b>Corvidae</b>                   |
| Western Scrub-Jay                          | <i>Aphelocoma californica</i>     |
| American Crow                              | <i>Corvus brachyrhynchos</i>      |
| Common Raven                               | <i>Corvus corax</i>               |
| <b>Larks</b>                               | <b>Alaudidae</b>                  |
| **Horned Lark                              | <i>Eremophila alpestris</i>       |
| <b>Swallows</b>                            | <b>Hirundinidae</b>               |
| Tree Swallow                               | <i>Tachycineta bicolor</i>        |
| Northern Rough-winged Swallow              | <i>Stelgidopteryx serripennis</i> |
| Cliff Swallow                              | <i>Petrochelidon pyrrhonota</i>   |
| Barn Swallow                               | <i>Hirundo rustica</i>            |
| <b>Long-tailed Tits and Bushtits</b>       | <b>Aegithalidae</b>               |
| Bushtit                                    | <i>Psaltriparus minimus</i>       |
| <b>Wrens</b>                               | <b>Troglodytidae</b>              |
| Rock Wren                                  | <i>Salpinctes obsoletus</i>       |
| House Wren                                 | <i>Troglodytes aedon</i>          |
| Bewick's Wren                              | <i>Thryomanes bewickii</i>        |
| <b>Sylviid Warblers</b>                    | <b>Sylviidae</b>                  |
| Wrentit                                    | <i>Chamaea fasciata</i>           |
| <b>Mockingbirds, Thrashers, and Allies</b> | <b>Mimidae</b>                    |
| Northern Mockingbird                       | <i>Mimus polyglottos</i>          |
| California Thrasher                        | <i>Toxostoma redivivum</i>        |
| <b>Starlings and Allies</b>                | <b>Sturnidae</b>                  |
| *European Starling                         | <i>Sturnus vulgaris</i>           |
| <b>Wagtails and Pipits</b>                 | <b>Motacillidae</b>               |

| <b>BIRDS</b>                                 | <b>AVES</b>                         |
|--|-------------------------------------|
| American Pipit                               | <i>Anthus rubescens</i>             |
| <b>Silky-flycatchers</b>                     | <b>Ptilonotidae</b>                 |
| Phainopepla                                  | <i>Phainopepla nitens</i>           |
| <b>Wood-Warblers</b>                         | <b>Parulidae</b>                    |
| Orange-crowned Warbler                       | <i>Oreothlypis celata</i>           |
| Common Yellowthroat                          | <i>Geothlypis trichas</i>           |
| **Yellow Warbler                             | <i>Setophaga petechia</i>           |
| Yellow-rumped Warbler                        | <i>Setophaga coronata</i>           |
| Wilson's Warbler                             | <i>Cardellina pusilla</i>           |
| <b>Emberizines</b>                           | <b>Emberizidae</b>                  |
| Spotted Towhee                               | <i>Pipilo maculatus</i>             |
| **Southern California Rufous-crowned Sparrow | <i>Aimophila ruficeps canescens</i> |
| California Towhee                            | <i>Melospiza crissalis</i>          |
| Lark Sparrow                                 | <i>Chondestes grammacus</i>         |
| Savannah Sparrow                             | <i>Passerculus sandwichensis</i>    |
| Song Sparrow                                 | <i>Melospiza melodia</i>            |
| Lincoln's Sparrow                            | <i>Melospiza lincolnii</i>          |
| White-crowned Sparrow                        | <i>Zonotrichia leucophrys</i>       |
| <b>Cardinals and Allies</b>                  | <b>Cardinalidae</b>                 |
| Western Tanager                              | <i>Piranga ludoviciana</i>          |
| Black-headed Grosbeak                        | <i>Pheucticus melanocephalus</i>    |
| Blue Grosbeak                                | <i>Guiraca caerulea</i>             |
| <b>Blackbirds and Allies</b>                 | <b>Icteridae</b>                    |
| Red-winged Blackbird                         | <i>Agelaius phoeniceus</i>          |
| Western Meadowlark                           | <i>Sturnella neglecta</i>           |
| Brewer's Blackbird                           | <i>Euphagus cyanocephalus</i>       |
| Great-tailed Grackle                         | <i>Quiscalus mexicanus</i>          |
| Brown-headed Cowbird                         | <i>Molothrus ater</i>               |
| Hooded Oriole                                | <i>Icterus cucullatus</i>           |
| Bullock's Oriole                             | <i>Icterus bullockii</i>            |
| <b>Finches and Allies</b>                    | <b>Fringillidae</b>                 |
| House Finch                                  | <i>Haemorhous mexicanus</i>         |
| Lesser Goldfinch                             | <i>Spinus psaltria</i>              |
| American Goldfinch                           | <i>Spinus tristis</i>               |
| <b>Old World Sparrows</b>                    | <b>Passeridae</b>                   |
| *House Sparrow                               | <i>Passer domesticus</i>            |



## **APPENDIX C**

### **SWF SURVEY FORMS**

# Appendix 1. Willow Flycatcher Survey and Detection Form

Always check the U.S. Fish and Wildlife Service Arizona Ecological Services Field Office web site (<http://www.fws.gov/southwest/es/arizona/>) for the most up-to-date version.

## Willow Flycatcher (WIFL) Survey and Detection Form (revised April 2010)

Site Name Valley-Ivyglen, Phase I, Goldenrod Ave. State CA County Riverside  
 USGS Quad Name Ranoland Elevation 440 (meters)  
 Creek, River, Wetland, or Lake Name unnamed

Is copy of USGS map marked with survey area and WIFL sightings attached (as required)? Yes  No

Survey Coordinates: Start: E 478945 N 3732706 UTM Datum NAD27 (See instructions)  
 Stop: E 478941 N 3732645 UTM Zone 11

If survey coordinates changed between visits, enter coordinates for each survey in comments section on back of this page.

**\*\* Fill in additional site information on back of this page \*\***

| Survey #  | 2012 | Observer(s)<br>(Full Name)                        | Date (m/d/y)       | Survey time<br>* see<br>comments  | Number of Adult WIFLs | Estimate d Number of Pairs | Estimated Number of Territories | Nest(s) Found? Y or N<br>If Yes, number of nests | Comments (e.g., bird behavior; evidence of pairs or breeding; potential threats [livestock, cowbirds, <i>Diorhabda</i> spp.]). If <i>Diorhabda</i> found, contact USFWS and State WIFL coordinator | GPS Coordinates for WIFL Detections (this is an optional column for documenting individuals, pairs, or groups of birds found on each survey). Include additional sheets if necessary. |     |       |       |
|---|------|---|--------------------|---|-----------------------|----------------------------|---------------------------------|--|--|---|-----|-------|-------|
|   |      |   |                    |   |                       |                            |                                 |  |  | # Birds   | Sex | UTM E | UTM N |
| Survey # 1  |      | Observer(s)<br><u>Green</u>                       | Date <u>15 May</u> | Survey time<br>Start <u>0605</u><br>Stop <u>0850</u><br>Total hrs <u>2.75</u>   | <u>0</u>              | <u>0</u>                   | <u>0</u>                        | <u>N</u>   | <u>—</u>   | # Birds   | Sex | UTM E | UTM N |
| Survey # 2  |      | Observer(s)<br><u>Chet McGaugh</u><br>TE836517-6  | Date <u>4 Jun</u>  | Survey time<br>Start <u>0510</u><br>Stop <u>0950</u><br>Total hrs <u>4h</u>     | <u>0</u>              | <u>0</u>                   | <u>0</u>                        | <u>N</u>   | <u>A Brown-headed cowbird (see comments)</u>   | # Birds   | Sex | UTM E | UTM N |
| Survey # 3  |      | Observer(s)<br><u>McGaugh</u>                     | Date <u>14 Jun</u> | Survey time<br>Start <u>0525</u><br>Stop <u>0950</u><br>Total hrs <u>4h 25m</u> | <u>0</u>              | <u>0</u>                   | <u>0</u>                        | <u>N</u>   | <u>A "</u>   | # Birds   | Sex | UTM E | UTM N |
| Survey # 4  |      | Observer(s)<br><u>Green</u>                       | Date <u>28 Jun</u> | Survey time<br>Start <u>0545</u><br>Stop <u>0810</u><br>Total hrs <u>2h 35m</u> | <u>0</u>              | <u>0</u>                   | <u>0</u>                        | <u>N</u>   | <u>pair of Brown-headed cowbirds</u>   | # Birds   | Sex | UTM E | UTM N |
| Survey # 5  |      | Observer(s)<br><u>Stephen Myers</u><br>TE804203-9 | Date <u>9 Jul</u>  | Survey time<br>Start <u>0445</u><br>Stop <u>0945</u><br>Total hrs <u>5</u>      | <u>0</u>              | <u>0</u>                   | <u>0</u>                        | <u>N</u>   | <u>—</u>   | # Birds   | Sex | UTM E | UTM N |
| Overall Site Summary  |      |   |                    |   | Total Adult Residents | Total Pairs                | Total Territories               | Total Nests                                      | Were any Willow Flycatchers color-banded? Yes <input type="checkbox"/> No <input checked="" type="checkbox"/>  | If yes, report color combination(s) in the comments section on back of form and report to USFWS.  |     |       |       |
| Totals do not equal the sum of each column. Include only resident adults. Do not include migrants, nestlings, and fledglings. |      |   |                    |   |                       |                            |                                 |  |  |   |     |       |       |
| Be careful not to double count individuals. * 19 hours  |      |   |                    |   | <u>0</u>              | <u>0</u>                   | <u>0</u>                        | <u>0</u>   |  |   |     |       |       |
| Total Survey Hrs <u>25 min.</u>   |      |   |                    |   |                       |                            |                                 |  |  |   |     |       |       |

Reporting Individual John F. Green Date Report Completed 27 July 2012 (draft)  
 US Fish and Wildlife Service Permit # TE054011-5 State Wildlife Agency Permit # SC-001951 attachment  
**Submit form to USFWS and State Wildlife Agency by September 1<sup>st</sup>. Retain a copy for your records.**

32 A Natural History Summary and Survey Protocol for the Southwestern Willow Flycatcher

Fill in the following information completely. Submit form by September 1<sup>st</sup>. Retain a copy for your records.

Reporting Individual John F. Green Phone # 951-369-8060  
 Affiliation AMEC E-mail john.f.green@amec.com  
 Site Name Valley-Ivyglen, Phase I, Goldenrod Ave. Date Report Completed 27 July 2012 (draft)  
 Was this site surveyed in a previous year? Yes \_\_\_ No \_\_\_ Unknown \_\_\_  
 Did you verify that this site name is consistent with that used in previous years? Yes  No \_\_\_ Not Applicable \_\_\_  
 If site name is different, what name(s) was used in the past? Unmarked Riparian Patch 1  
 If site was surveyed last year, did you survey the same general area this year? Yes  No \_\_\_ If no, summarize below.  
 Did you survey the same general area during each visit to this site this year? Yes  No \_\_\_ If no, summarize below.  
 → last surveyed in 2009  
 Management Authority for Survey Area: Federal \_\_\_ Municipal/County \_\_\_ State \_\_\_ Tribal \_\_\_ Private \_\_\_  
 Name of Management Entity or Owner (e.g., Tonto National Forest) Unknown

Length of area surveyed: 0.04 (km)

Vegetation Characteristics: Check (only one) category that best describes the predominant tree/shrub foliar layer at this site:

- Native broadleaf plants (entirely or almost entirely, > 90% native)
- Mixed native and exotic plants (mostly native, 50 - 90% native)
- Mixed native and exotic plants (mostly exotic, 50 - 90% exotic)
- Exotic/introduced plants (entirely or almost entirely, > 90% exotic)

Identify the 2-3 predominant tree/shrub species in order of dominance. Use scientific names. Salix spp

Average height of canopy (Do not include a range): 5 (meters)

Attach the following: 1) copy of USGS quad/topographical map (REQUIRED) of survey area, outlining survey site and location of WIFL detections; 2) sketch or aerial photo showing site location, patch shape, survey route, location of any detected WIFLs or their nests; 3) photos of the interior of the patch, exterior of the patch, and overall site. Describe any unique habitat features in Comments.

Comments (such as start and end coordinates of survey area if changed among surveys, supplemental visits to sites, unique habitat features. Attach additional sheets if necessary.

\*survey times include the full morning of surveys, including visits to other patches. Times are standard time, not daylight savings time.  
^seen during survey day

Territory Summary Table. Provide the following information for each verified territory at your site.

| Territory Number | All Dates Detected | UTM E | UTM N | Pair Confirmed? Y or N | Nest Found? Y or N | Description of How You Confirmed Territory and Breeding Status (e.g., vocalization type, pair interactions, nesting attempts, behavior) |
|------------------|--------------------|-------|-------|------------------------|--------------------|---|
|                  |                    |       |       |                        |                    |   |
|                  |                    |       |       |                        |                    |   |
|                  |                    |       |       |                        |                    |   |
|                  |                    |       |       |                        |                    |   |
|                  |                    |       |       |                        |                    |   |

Attach additional sheets if necessary

# Appendix 1. Willow Flycatcher Survey and Detection Form

Always check the U.S. Fish and Wildlife Service Arizona Ecological Services Field Office web site (<http://www.fws.gov/southwest/es/arizona/>) for the most up-to-date version.

## Willow Flycatcher (WIFL) Survey and Detection Form (revised April 2010)

Site Name Valley-Ivyglen, Phase I, Alabaster Loop State CA County Riverside  
 USGS Quad Name Roroland Elevation 450 (meters)  
 Creek, River, Wetland, or Lake Name unnamed  
 Is copy of USGS map marked with survey area and WIFL sightings attached (as required)? Yes  No

Survey Coordinates: Start: E 48334 N 3732688 UTM Datum NAD27 (See instructions)  
 Stop: E 478337 N 3732640 UTM Zone 11

If survey coordinates changed between visits, enter coordinates for each survey in comments section on back of this page.

**\*\* Fill in additional site information on back of this page \*\***

| Survey #   | Observer(s)<br>(Full Name)  | Date (m/d/y)<br>Survey time                              | Number of Adult WIFLs | Estimated Number of Pairs | Estimated Number of Territories | Nest(s) Found? Y or N<br>If Yes, number of nests | Comments (e.g., bird behavior; evidence of pairs or breeding; potential threats [livestock, cowbirds, <i>Diorhabda</i> spp.]). If <i>Diorhabda</i> found, contact USFWS and State WIFL coordinator | GPS Coordinates for WIFL Detections (this is an optional column for documenting individuals, pairs, or groups of birds found on each survey). Include additional sheets if necessary. |     |       |       |
|--|-----------------------------|--|-----------------------|---------------------------|---------------------------------|--|--|---|-----|-------|-------|
|  |                             |  |                       |                           |                                 |  |  | # Birds   | Sex | UTM E | UTM N |
| Survey # 1   | Green                       | Date 15 May<br>Start 0605<br>Stop 0850<br>Total hrs 2.5  | 0                     | 0                         | 0                               | N  | —  |   |     |       |       |
| Survey # 2   | Chet McGaugh<br>TE836517-6  | Date 4 Jun<br>Start 0510<br>Stop 0950<br>Total hrs 4.2   | 0                     | 0                         | 0                               | N  | Δ Brown headed cowbird (see comments)  |   |     |       |       |
| Survey # 3   | McGaugh                     | Date 14 Jun<br>Start 0525<br>Stop 0950<br>Total hrs 4.25 | 0                     | 0                         | 0                               | N  | Δ "  |   |     |       |       |
| Survey # 4   | Green                       | Date 28 Jun<br>Start 0545<br>Stop 0810<br>Total hrs 2.5  | 0                     | 0                         | 0                               | N  | —  |   |     |       |       |
| Survey # 5   | Stephen Myers<br>TE804203-9 | Date 9 Jul<br>Start 0445<br>Stop 0945<br>Total hrs 5     | 0                     | 0                         | 0                               | N  | —  |   |     |       |       |
| Overall Site Summary<br>Totals do not equal the sum of each column. Include only resident adults. Do not include migrants, nestlings, and fledglings.<br><br>Be careful not to double count individuals.<br>Total Survey Hrs |                             |  | Total Adult Residents | Total Pairs               | Total Territories               | Total Nests                                      | Were any Willow Flycatchers color-banded? Yes ___ No <input checked="" type="checkbox"/><br><br>If yes, report color combination(s) in the comments section on back of form and report to USFWS.   |   |     |       |       |
|  |                             |  | 0                     | 0                         | 0                               | 0  |  |   |     |       |       |

Reporting Individual John F. Green Date Report Completed 27 July 2012 (draft)  
 US Fish and Wildlife Service Permit # TE054011-5 State Wildlife Agency Permit # SC-001951 attachment  
**Submit form to USFWS and State Wildlife Agency by September 1<sup>st</sup>. Retain a copy for your records.**

32 A Natural History Summary and Survey Protocol for the Southwestern Willow Flycatcher

Fill in the following information completely. Submit form by September 1<sup>st</sup>. Retain a copy for your records.

Reporting Individual John F. Green Phone # 951-369-8060  
 Affiliation AMEC E-mail john.f.green@amec.com  
 Site Name Valley-Ivyglen, Phase I, Alabaster Loop Date Report Completed 27 July 2012 (draft)  
 Was this site surveyed in a previous year? Yes  No  Unknown   
 Did you verify that this site name is consistent with that used in previous years? Yes  No  Not Applicable   
 If site name is different, what name(s) was used in the past? Unnamed Riparian Patch 2  
 If site was surveyed (last year) did you survey the same general area this year? Yes  No  If no, summarize below.  
 Did you survey the same general area during each visit to this site this year? Yes  No  If no, summarize below.  
 → last surveyed in 2009  
 Management Authority for Survey Area: Federal  Municipal/County  State  Tribal  Private   
 Name of Management Entity or Owner (e.g., Tonto National Forest) unknown

Length of area surveyed: 0.05 (km)

Vegetation Characteristics: Check (only one) category that best describes the predominant tree/shrub foliar layer at this site:

- Native broadleaf plants (entirely or almost entirely, > 90% native)
- Mixed native and exotic plants (mostly native, 50 - 90% native)
- Mixed native and exotic plants (mostly exotic, 50 - 90% exotic)
- Exotic/introduced plants (entirely or almost entirely, > 90% exotic)

Identify the 2-3 predominant tree/shrub species in order of dominance. Use scientific names. Salix spp.

Average height of canopy (Do not include a range): 5 (meters)

Attach the following: 1) copy of USGS quad/topographical map (REQUIRED) of survey area, outlining survey site and location of WIFL detections; 2) sketch or aerial photo showing site location, patch shape, survey route, location of any detected WIFLs or their nests; 3) photos of the interior of the patch, exterior of the patch, and overall site. Describe any unique habitat features in Comments.

Comments (such as start and end coordinates of survey area if changed among surveys, supplemental visits to sites, unique habitat features. Attach additional sheets if necessary.

\*survey times include the full morning of surveys, including visits to other patches. Times are in standard, not daylight savings.

A=seen during survey day

Territory Summary Table. Provide the following information for each verified territory at your site.

| Territory Number | All Dates Detected | UTM E | UTM N | Pair Confirmed? Y or N | Nest Found? Y or N | Description of How You Confirmed Territory and Breeding Status (e.g., vocalization type, pair interactions, nesting attempts, behavior) |
|------------------|--------------------|-------|-------|------------------------|--------------------|---|
|                  |                    |       |       |                        |                    |   |
|                  |                    |       |       |                        |                    |   |
|                  |                    |       |       |                        |                    |   |
|                  |                    |       |       |                        |                    |   |
|                  |                    |       |       |                        |                    |   |

Attach additional sheets if necessary

# Appendix 1. Willow Flycatcher Survey and Detection Form

Always check the U.S. Fish and Wildlife Service Arizona Ecological Services Field Office web site (<http://www.fws.gov/southwest/es/arizona/>) for the most up-to-date version.

## Willow Flycatcher (WIFL) Survey and Detection Form (revised April 2010)

Site Name Valley-Ivyglen, Phase I, Peach St. State CA County Riverside  
 USGS Quad Name Lake Elsinore Elevation 500 (meters)  
 Creek, River, Wetland, or Lake Name unnamed  
 Is copy of USGS map marked with survey area and WIFL sightings attached (as required)? Yes  No

Survey Coordinates: Start: E 472580 N 3730997 UTM Datum NAD27 (See instructions)  
 Stop: E 472612 N 3730803 UTM Zone 11

If survey coordinates changed between visits, enter coordinates for each survey in comments section on back of this page.

**\*\* Fill in additional site information on back of this page \*\***

| Survey #  | 2012 | Observer(s)<br>(Full Name)  | Date (m/d/y) | Survey time           | Number of Adult WIFLs | Estimate d Number of Pairs | Estimated Number of Territories | Nest(s) Found? Y or N<br>If Yes, number of nests | Comments (e.g., bird behavior; evidence of pairs or breeding; potential threats [livestock, cowbirds, <i>Diorhabda</i> spp.]). If <i>Diorhabda</i> found, contact USFWS and State WIFL coordinator | GPS Coordinates for WIFL Detections (this is an optional column for documenting individuals, pairs, or groups of birds found on each survey). Include additional sheets if necessary. |     |       |       |
|---|------|-----------------------------|--------------|-----------------------|-----------------------|----------------------------|---------------------------------|--|--|---|-----|-------|-------|
|   |      |                             |              |                       |                       |                            |                                 |  |  | # Birds   | Sex | UTM E | UTM N |
| Survey # 1  |      | Green                       | 5 May        | 0605 - 0850<br>2:25   | 0                     | 0                          | 0                               | N  | One Brown-Headed cowbird (BHCO)  |   |     |       |       |
| Survey # 2  |      | Chet McGough<br>TE836517-6  | 4 Jun        | 0510 - 0950<br>4h 10m | 0                     | 0                          | 0                               | N  | 1 BHCO   |   |     |       |       |
| Survey # 3  |      | McGough                     | 4 Jun        | 0525 - 0950<br>4h 25m | 0                     | 0                          | 0                               | N  | 1 BHCO   |   |     |       |       |
| Survey # 4  |      | Green                       | 28 Jun       | 0845 - 0810<br>2h 35m | 0                     | 0                          | 0                               | N  | —  |   |     |       |       |
| Survey # 5  |      | Stephen Myers<br>TE864203-9 | 9 Jul        | 0445 - 0945<br>5h     | 0                     | 0                          | 0                               | N  | —  |   |     |       |       |
| Overall Site Summary<br>Totals do not equal the sum of each column. Include only resident adults. Do not include migrants, nestlings, and fledglings. |      |                             |              |                       | Total Adult Residents | Total Pairs                | Total Territories               | Total Nests                                      | Were any Willow Flycatchers color-banded? Yes <input type="checkbox"/> No <input checked="" type="checkbox"/>  |   |     |       |       |
| Be careful not to double count individuals. * 19h   |      |                             |              |                       | 0                     | 0                          | 0                               | 0  | If yes, report color combination(s) in the comments section on back of form and report to USFWS.   |   |     |       |       |
| Total Survey Hrs 25m  |      |                             |              |                       |                       |                            |                                 |  |  |   |     |       |       |

Reporting Individual John F. Green Date Report Completed 27 July 2012 (draft)  
 US Fish and Wildlife Service Permit # TE054011-5 State Wildlife Agency Permit # SC-001951 attachment  
**Submit form to USFWS and State Wildlife Agency by September 1<sup>st</sup>. Retain a copy for your records.**

32 A Natural History Summary and Survey Protocol for the Southwestern Willow Flycatcher

Fill in the following information completely. Submit form by September 1<sup>st</sup>. Retain a copy for your records.

Reporting Individual John F. Green Phone # 951-369-8060  
 Affiliation AMEC E-mail john.f.green@amec.com  
 Site Name Valley-Ivyglen, Phase I, Peach St. Date Report Completed 27 July 2012 (draft)  
 Was this site surveyed in a previous year? Yes \_\_\_ No \_\_\_ Unknown \_\_\_  
 Did you verify that this site name is consistent with that used in previous years? Yes  No \_\_\_ Not Applicable \_\_\_  
 If site name is different, what name(s) was used in the past? \_\_\_\_\_  
 If site was surveyed last year, did you survey the same general area this year? Yes  No \_\_\_ If no, summarize below.  
 Did you survey the same general area during each visit to this site this year? Yes  No \_\_\_ If no, summarize below.  
 Management Authority for Survey Area: Federal \_\_\_ Municipal/County \_\_\_ State \_\_\_ Tribal \_\_\_ Private \_\_\_  
 Name of Management Entity or Owner (e.g., Tonto National Forest) Unknown

Length of area surveyed: 0.22 (km)

Vegetation Characteristics: Check (only one) category that best describes the predominant tree/shrub foliar layer at this site:

- Native broadleaf plants (entirely or almost entirely, > 90% native)
- Mixed native and exotic plants (mostly native, 50 - 90% native)
- Mixed native and exotic plants (mostly exotic, 50 - 90% exotic)
- Exotic/introduced plants (entirely or almost entirely, > 90% exotic)

Identify the 2-3 predominant tree/shrub species in order of dominance. Use scientific names. Salix spp.

Average height of canopy (Do not include a range): 7 (meters)

Attach the following: 1) copy of USGS quad/topographical map (REQUIRED) of survey area, outlining survey site and location of WIFL detections; 2) sketch or aerial photo showing site location, patch shape, survey route, location of any detected WIFLs or their nests; 3) photos of the interior of the patch, exterior of the patch, and overall site. Describe any unique habitat features in Comments.

Comments (such as start and end coordinates of survey area if changed among surveys, supplemental visits to sites, unique habitat features. Attach additional sheets if necessary.

\*survey times are for full morning, not just this patch. Times are in standard.  
A = seen during survey day

Territory Summary Table. Provide the following information for each verified territory at your site.

| Territory Number | All Dates Detected | UTM E | UTM N | Pair Confirmed? Y or N | Nest Found? Y or N | Description of How You Confirmed Territory and Breeding Status (e.g., vocalization type, pair interactions, nesting attempts, behavior) |
|------------------|--------------------|-------|-------|------------------------|--------------------|---|
|                  |                    |       |       |                        |                    |   |
|                  |                    |       |       |                        |                    |   |
|                  |                    |       |       |                        |                    |   |
|                  |                    |       |       |                        |                    |   |
|                  |                    |       |       |                        |                    |   |

Attach additional sheets if necessary

# Appendix 1. Willow Flycatcher Survey and Detection Form

Always check the U.S. Fish and Wildlife Service Arizona Ecological Services Field Office web site (<http://www.fws.gov/southwest/es/arizona/>) for the most up-to-date version.

## Willow Flycatcher (WIFL) Survey and Detection Form (revised April 2010)

Site Name Valley-Luyglen, Phase I, Wasson Canyon State CA County Riverside  
 USGS Quad Name Lake Elsinore Elevation 495 (meters)  
 Creek, River, Wetland, or Lake Name Unnamed  
 Is copy of USGS map marked with survey area and WIFL sightings attached (as required)? Yes  No

Survey Coordinates: Start: E 4723391 N 3730799 UTM Datum NAD27 (See instructions)  
 Stop: E 472425 N 3730494 UTM Zone 11

If survey coordinates changed between visits, enter coordinates for each survey in comments section on back of this page.

**\*\* Fill in additional site information on back of this page \*\***

| Survey #  | 2012<br>Date (m/d/y)<br>Survey time<br>Observer(s)<br>(Full Name)  | Number of Adult WIFLs | Estimated Number of Pairs | Estimated Number of Territories | Nest(s) Found? Y or N<br>If Yes, number of nests | Comments (e.g., bird behavior; evidence of pairs or breeding; potential threats [livestock, cowbirds, <i>Diorhabda</i> spp.]). If <i>Diorhabda</i> found, contact USFWS and State WIFL coordinator | GPS Coordinates for WIFL Detections (this is an optional column for documenting individuals, pairs, or groups of birds found on each survey). Include additional sheets if necessary. |     |       |       |
|---|--|-----------------------|---------------------------|---------------------------------|--|--|---|-----|-------|-------|
|   |  |                       |                           |                                 |  |  | # Birds   | Sex | UTM E | UTM N |
| Survey # 1  | Date <u>15 May</u><br>Observer(s) <u>Green</u><br>Start <u>0605</u><br>Stop <u>0850</u><br>Total hrs <u>2.75</u>                               | <u>0</u>              | <u>0</u>                  | <u>0</u>                        | <u>N</u>   | <u>one BHCO</u>  |   |     |       |       |
| Survey # 2  | Date <u>4 Jun</u><br>Observer(s) <u>Chet McGaugh</u><br><u>TE8365176</u><br>Start <u>0950</u><br>Stop <u>4h 40m</u><br>Total hrs <u>4h 40m</u> | <u>0</u>              | <u>0</u>                  | <u>0</u>                        | <u>N</u>   | <u>1 Brown-headed cowbird (BHCO)</u>   |   |     |       |       |
| Survey # 3  | Date <u>4 Jun</u><br>Observer(s) <u>McGaugh</u><br>Start <u>0925</u><br>Stop <u>0950</u><br>Total hrs <u>4h 25m</u>                            | <u>0</u>              | <u>0</u>                  | <u>0</u>                        | <u>N</u>   | <u>1 BHCO</u>  |   |     |       |       |
| Survey # 4  | Date <u>28 Jun</u><br>Observer(s) <u>Green</u><br>Start <u>0545</u><br>Stop <u>0810</u><br>Total hrs <u>2h 35m</u>                             | <u>0</u>              | <u>0</u>                  | <u>0</u>                        | <u>N</u>   | <u>—</u>   |   |     |       |       |
| Survey # 5  | Date <u>9 Jul</u><br>Observer(s) <u>Steve Myers</u><br><u>TE 804203-9</u><br>Start <u>0445</u><br>Stop <u>0945</u><br>Total hrs <u>5</u>       | <u>0</u>              | <u>0</u>                  | <u>0</u>                        | <u>N</u>   | <u>—</u>   |   |     |       |       |
| Overall Site Summary<br>Totals do not equal the sum of each column. Include only resident adults. Do not include migrants, nestlings, and fledglings. |  | Total Adult Residents | Total Pairs               | Total Territories               | Total Nests                                      | Were any Willow Flycatchers color-banded? Yes <input type="checkbox"/> No <input checked="" type="checkbox"/>  |   |     |       |       |
| Be careful not to double count individuals. # <u>19h</u><br>Total Survey Hrs <u>25m</u>   |  | <u>0</u>              | <u>0</u>                  | <u>0</u>                        | <u>0</u>   | If yes, report color combination(s) in the comments section on back of form and report to USFWS.   |   |     |       |       |

Reporting Individual John F. Green Date Report Completed 27 July 2012 (draft)  
 US Fish and Wildlife Service Permit # TE054011-5 State Wildlife Agency Permit # SC-001951 attachment  
**Submit form to USFWS and State Wildlife Agency by September 1<sup>st</sup>. Retain a copy for your records.**



32 A Natural History Summary and Survey Protocol for the Southwestern Willow Flycatcher

Fill in the following information completely. Submit form by September 1<sup>st</sup>. Retain a copy for your records.

Reporting Individual John F. Green Phone # 951-369-8060  
 Affiliation AMEC E-mail john.f.green@amec.com  
 Site Name Valley-Inyogen, Phase I, Wasson Canyon Date Report Completed 27 July 2012 (draft)  
 Was this site surveyed in a previous year? Yes  No  Unknown   
 Did you verify that this site name is consistent with that used in previous years? Yes  No  Not Applicable   
 If site name is different, what name(s) was used in the past? \_\_\_\_\_  
 If site was surveyed last year, did you survey the same general area this year? Yes  No  If no, summarize below.  
 Did you survey the same general area during each visit to this site this year? Yes  No  If no, summarize below.  
 Management Authority for Survey Area: Federal  Municipal/County  State  Tribal  Private   
 Name of Management Entity or Owner (e.g., Tonto National Forest) Unknown

Length of area surveyed: 0.32 (km)

Vegetation Characteristics: Check (only one) category that best describes the predominant tree/shrub foliar layer at this site:

- Native broadleaf plants (entirely or almost entirely, > 90% native)
- Mixed native and exotic plants (mostly native, 50 - 90% native)
- Mixed native and exotic plants (mostly exotic, 50 - 90% exotic)
- Exotic/introduced plants (entirely or almost entirely, > 90% exotic)

Identify the 2-3 predominant tree/shrub species in order of dominance. Use scientific names. Salix spp., Populus fremontii

Average height of canopy (Do not include a range): ~~12~~ 12 (meters)

Attach the following: 1) copy of USGS quad/topographical map (REQUIRED) of survey area, outlining survey site and location of WIFL detections; 2) sketch or aerial photo showing site location, patch shape, survey route, location of any detected WIFLs or their nests; 3) photos of the interior of the patch, exterior of the patch, and overall site. Describe any unique habitat features in Comments.

Comments (such as start and end coordinates of survey area if changed among surveys, supplemental visits to sites, unique habitat features. Attach additional sheets if necessary.

\*survey times are for full morning, not just this patch. Times are in standard.

A seen during survey day

Territory Summary Table. Provide the following information for each verified territory at your site.

| Territory Number | All Dates Detected | UTM E | UTM N | Pair Confirmed? Y or N | Nest Found? Y or N | Description of How You Confirmed Territory and Breeding Status (e.g., vocalization type, pair interactions, nesting attempts, behavior) |
|------------------|--------------------|-------|-------|------------------------|--------------------|---|
|                  |                    |       |       |                        |                    |   |
|                  |                    |       |       |                        |                    |   |
|                  |                    |       |       |                        |                    |   |
|                  |                    |       |       |                        |                    |   |
|                  |                    |       |       |                        |                    |   |

Attach additional sheets if necessary

# Appendix 1. Willow Flycatcher Survey and Detection Form

Always check the U.S. Fish and Wildlife Service Arizona Ecological Services Field Office web site (<http://www.fws.gov/southwest/es/arizona/>) for the most up-to-date version.

## Willow Flycatcher (WIFL) Survey and Detection Form (revised April 2010)

Site Name Valley-Ivyglen, Phase I, Rosetta Canyon State CA County Riverside  
 USGS Quad Name Lake Elsinore Elevation 425 (meters)  
 Creek, River, Wetland, or Lake Name unnamed drainage  
 Is copy of USGS map marked with survey area and WIFL sightings attached (as required)? Yes  No

Survey Coordinates: Start: E 469844 N 3729121 UTM Datum NAD27 (See instructions)  
 Stop: E 469995 N 3729143 UTM Zone 11

If survey coordinates changed between visits, enter coordinates for each survey in comments section on back of this page.

**\*\* Fill in additional site information on back of this page \*\***

| Survey #  | 2012 | Observer(s)<br>(Full Name)   | Date (m/d/y)<br>Survey time                              | Number of Adult WIFLs | Estimated Number of Pairs | Estimated Number of Territories | Nest(s) Found?<br>Y or N<br>If Yes, number of nests | Comments (e.g., bird behavior; evidence of pairs or breeding; potential threats [livestock, cowbirds, <i>Diorhabda</i> spp.]). If <i>Diorhabda</i> found, contact USFWS and State WIFL coordinator | GPS Coordinates for WIFL Detections (this is an optional column for documenting individuals, pairs, or groups of birds found on each survey). Include additional sheets if necessary. |     |       |       |
|---|------|------------------------------|--|-----------------------|---------------------------|---------------------------------|---|--|---|-----|-------|-------|
|   |      |                              |  |                       |                           |                                 |   |  | # Birds   | Sex | UTM E | UTM N |
| Survey # 1  |      | Green                        | 15 May<br>Start 0605<br>Stop 0852<br>2.75 hrs            | 0                     | 0                         | 0                               | N   | —  |   |     |       |       |
| Survey # 2  |      | Chet McGaugh TE<br>836517-6  | 4 Jun<br>Start 0510<br>Stop 0950<br>4h 40m<br>Total hrs  | 0                     | 0                         | 0                               | N   | A Brown-headed Cowbird (BHCO)  |   |     |       |       |
| Survey # 3  |      | McGaugh                      | 14 Jun<br>Start 0525<br>Stop 0950<br>4h 25m<br>Total hrs | 0                     | 0                         | 0                               | N   | A BHCO   |   |     |       |       |
| Survey # 4  |      | Green                        | 28 Jun<br>Start 0745<br>Stop 0810<br>2h 35m<br>Total hrs | 0                     | 0                         | 0                               | N   | BHCO<br>♂ & ♀  |   |     |       |       |
| Survey # 5  |      | Stephen Myers TE<br>804203-9 | 9 Jul<br>Start 0445<br>Stop 0945<br>5 hrs<br>Total hrs   | 0                     | 0                         | 0                               | N   | —  |   |     |       |       |
| Overall Site Summary<br>Totals do not equal the sum of each column. Include only resident adults. Do not include migrants, nestlings, and fledglings. |      |                              |  | Total Adult Residents | Total Pairs               | Total Territories               | Total Nests   | Were any Willow Flycatchers color-banded? Yes <input type="checkbox"/> No <input checked="" type="checkbox"/>  |   |     |       |       |
| Be careful not to double count individuals.<br>* 19h, 25m.<br>Total Survey Hrs  |      |                              |  | 0                     | 0                         | 0                               | 0   | If yes, report color combination(s) in the comments section on back of form and report to USFWS.   |   |     |       |       |

Reporting Individual John F. Green Date Report Completed 27 July 2012 (draft)  
 US Fish and Wildlife Service Permit # TE054011-5 State Wildlife Agency Permit # SC-001951 attachment  
**Submit form to USFWS and State Wildlife Agency by September 1<sup>st</sup>. Retain a copy for your records.**

32 A Natural History Summary and Survey Protocol for the Southwestern Willow Flycatcher

Fill in the following information completely. Submit form by September 1<sup>st</sup>. Retain a copy for your records.

Reporting Individual John F. Green Phone # 951-369-8060  
 Affiliation AMEC E-mail john.f.green@amec.com  
 Site Name Valley-Ivyglen, Phase I, Rosetta Canyon Date Report Completed 27 July 2012 (draft)  
 Was this site surveyed in a previous year? Yes  No  Unknown   
 Did you verify that this site name is consistent with that used in previous years? Yes  No  Not Applicable   
 If site name is different, what name(s) was used in the past? Rosetta, Unnamed Riparian Patch 5  
 If site was surveyed last year, did you survey the same general area this year? Yes  No  If no, summarize below.  
 Did you survey the same general area during each visit to this site this year? Yes  No  If no, summarize below.  
North patch surveyed 2009, South patch surveyed 2011, both surveyed 2012  
 Management Authority for Survey Area: Federal  Municipal/County  State  Tribal  Private   
 Name of Management Entity or Owner (e.g., Tonto National Forest) Unknown

Length of area surveyed: 0.16 (km)

Vegetation Characteristics: Check (only one) category that best describes the predominant tree/shrub foliar layer at this site:

- Native broadleaf plants (entirely or almost entirely, > 90% native)
- Mixed native and exotic plants (mostly native, 50 - 90% native)
- Mixed native and exotic plants (mostly exotic, 50 - 90% exotic)
- Exotic/introduced plants (entirely or almost entirely, > 90% exotic)

Identify the 2-3 predominant tree/shrub species in order of dominance. Use scientific names. Salix spp.

Average height of canopy (Do not include a range): 10 (meters)

Attach the following: 1) copy of USGS quad/topographical map (REQUIRED) of survey area, outlining survey site and location of WIFL detections; 2) sketch or aerial photo showing site location, patch shape, survey route, location of any detected WIFLs or their nests; 3) photos of the interior of the patch, exterior of the patch, and overall site. Describe any unique habitat features in Comments.

Comments (such as start and end coordinates of survey area if changed among surveys, supplemental visits to sites, unique habitat features. Attach additional sheets if necessary.)

\* survey times are for full morning, not just this patch. Times are in standard.  
A seen during survey day

Territory Summary Table. Provide the following information for each verified territory at your site.

| Territory Number | All Dates Detected | UTM E | UTM N | Pair Confirmed? Y or N | Nest Found? Y or N | Description of How You Confirmed Territory and Breeding Status (e.g., vocalization type, pair interactions, nesting attempts, behavior) |
|------------------|--------------------|-------|-------|------------------------|--------------------|---|
|                  |                    |       |       |                        |                    |   |
|                  |                    |       |       |                        |                    |   |
|                  |                    |       |       |                        |                    |   |
|                  |                    |       |       |                        |                    |   |
|                  |                    |       |       |                        |                    |   |

Attach additional sheets if necessary

## **APPENDIX D**

### **CERTIFICATION**



**CERTIFICATION STATEMENT FOR THE  
UNITED STATES FISH AND WILDLIFE SERVICE**

We certify that the information in the survey report and attached exhibits fully and accurately represents our work.

Signed: \_\_\_\_\_

Date: \_\_\_\_\_

Signed: \_\_\_\_\_

Date: \_\_\_\_\_

Signed: \_\_\_\_\_

Date: \_\_\_\_\_

