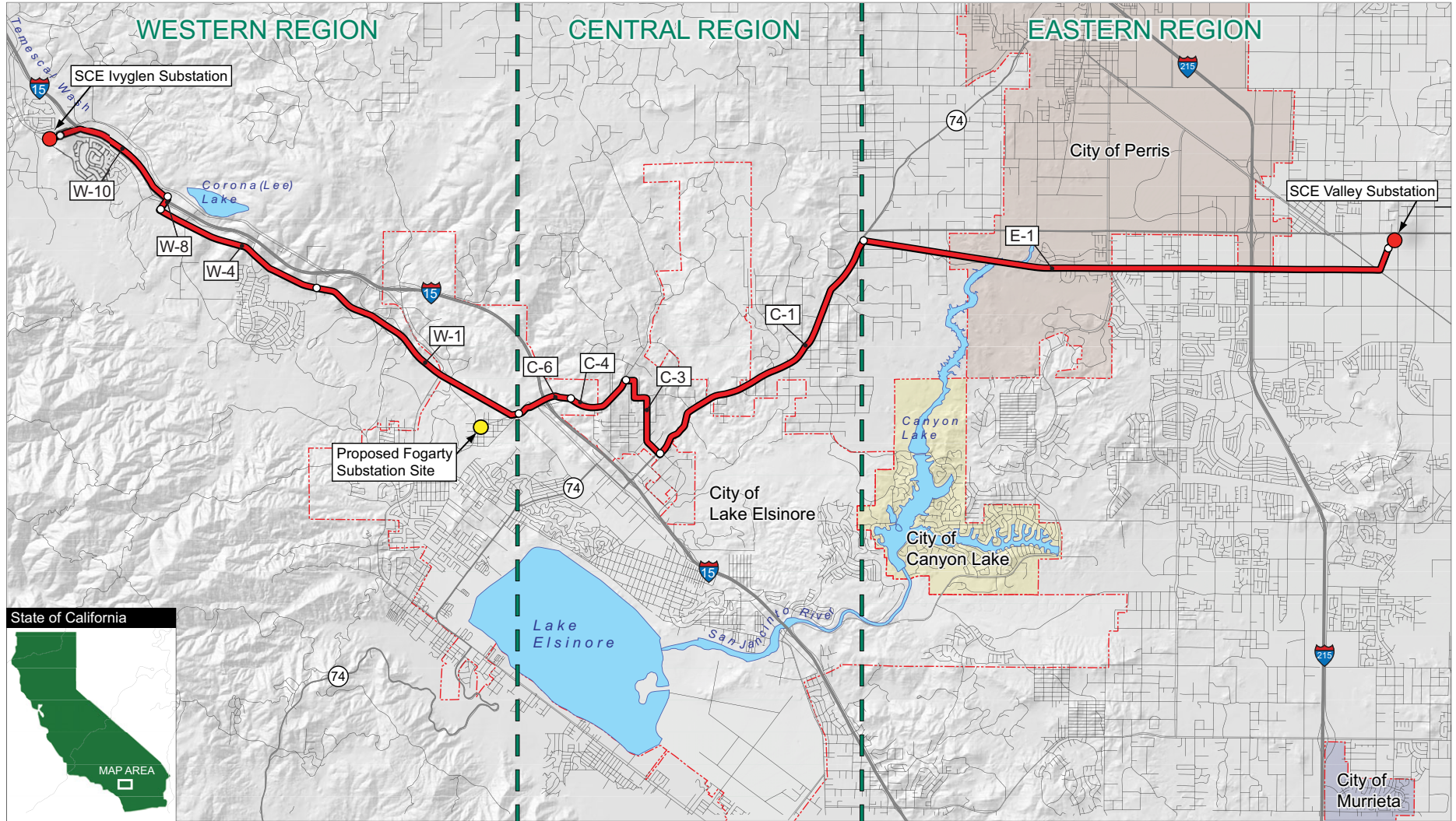


Reference: Fig. 3.3-2, Proposed Subtransmission Route Segments, Proponent's Environmental Assessment, SCE & Envicom Corp., 02/14/2007



SOURCE: Riverside County TLMA 1990, Southern California Edison 2006, and MHA Environmental Consulting 2007

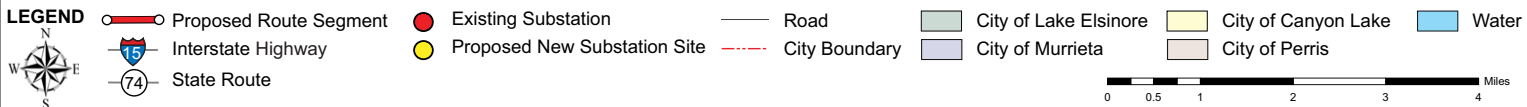


Figure B.3-1
**Proposed Subtransmission
 Route Segments**