



**NOTICE OF PREPARATION
ENVIRONMENTAL IMPACT REPORT FOR THE
MESA 500-KV SUBSTATION PROJECT PROPOSED BY SOUTHERN
CALIFORNIA EDISON**

APPLICATION NO. A.15-03-003

To: All Interested Parties
From: Lisa Orsaba, CEQA Project Manager, CPUC Energy Division
Date: June 5, 2015

Si usted necesita más información en español, por favor, llame al (844) 538-6992.

如果你想了解项目的信息(国语), 请打电话 (844)538-6992.

A. INTRODUCTION

On March 13, 2015, Southern California Edison (SCE) filed an application for a Permit to Construct (PTC) with the California Public Utilities Commission (CPUC) for the Mesa 500-kilovolt (kV) Substation Project (Mesa Substation Project) to rebuild and upgrade a portion of its transmission infrastructure in the Western Los Angeles Basin. In accordance with the California Environmental Quality Act (CEQA), the CPUC, as Lead Agency, is required to conduct an environmental review of the proposed project.

This Notice of Preparation (NOP) indicates the CPUC's intent to prepare an Environmental Impact Report (EIR) in accordance with CEQA. The EIR would describe the nature and extent of the environmental impacts of the Mesa Substation Project and project alternatives, and would discuss mitigation measures for adverse impacts.

With this NOP, the CPUC provides information about the Mesa Substation Project description, location, and potential environmental impacts, and requests comments from interested persons, organizations, and agencies regarding the scope and content of the environmental information.

This NOP will be circulated for a public review and comment period beginning June 5, 2015 and ending at 5:00 pm on July 5, 2015. A scoping meeting will be held to receive comments, as described in Section D.

B. SUMMARY OF THE MESA SUBSTATION PROJECT

Background

SCE states that the Mesa Substation Project is needed to address reliability concerns resulting from the pending shutdown of a projected 6,100 MW of Once Through Cooling (OTC) generation as well as the recent retirement of the San Onofre Nuclear Generating Station (SONGS). The Mesa Substation Project would address these concerns by reinforcing the bulk transmission system, providing additional

transmission import capability, allowing greater flexibility in the siting of new generation, and reducing the total amount of new generation required to meet local reliability needs in the Western Los Angeles Basin area. If the proposed project is approved, the existing 220/66/16-kV Mesa Substation would be upgraded to a 500/220/66/16-kV substation.

Project Description

Major components of the Mesa Substation Project include the following:

- Transmission, subtransmission, and distribution structure work in Monterey Park, Montebello, Commerce, and unincorporated Los Angeles County
- Relocation of an onsite Metropolitan Water District water line
- New telecommunications lines and modifications to an existing line, mostly on existing poles and in existing ducts
- Temporary modifications to 220-kV equipment at several existing substations to prevent electrical outages during construction
- Electrical and/or telecommunications equipment upgrades at 27 existing substations
- Undergrounding of three spans of overhead streetlight conductor in Bell Gardens

In addition, upgrades would be made to various transmission and telecommunications equipment inside the Mechanical Electrical Equipment Rooms (MEERs) at 27 satellite substations.

Construction of the new 500/220/66/16-kV substation and demolition of the existing 220/66/16-kV substation would occur in phases. Phase 1 would consist of grading and initial site development on the western portion of the project site. Phase 2 would consist of construction of the first half of the new Mesa Substation. During Phase 1 and 2, the existing substation on the eastern portion of the site would remain operational in order to maintain electrical service to customers during construction. Phase 3 would consist of demolition of the existing substation and construction of the second half of the new substation on the eastern portion of the site. Construction of the Mesa Substation Project is anticipated to begin in June 2016 and would take approximately 4.5 years.

Project Location

The Proposed Project is located in Los Angeles County, California, primarily in the City of Monterey Park where the existing Mesa Substation would be demolished and the new Mesa Substation would be constructed. Other components will be located within portions of Monterey Park, Montebello, Rosemead, South El Monte, Commerce, Bell Gardens, Pasadena, Industry, Santa Clarita, and in portions of unincorporated Los Angeles County. Project components are depicted in Figure 1, Overview of Main Components.

Operations and Maintenance

Mesa Substation

The Mesa Substation would be a manned substation and would function as a switching center. Maintenance personnel are responsible for substation equipment, routine scheduled maintenance, and repairs. A separate group of Testmen performs testing, setting, and maintenance of protective relays and control wirings including test procedures for new or relocated equipment. A utility person would handle non-operations activities within the switching center.

Transmission, Subtransmission, and Distribution Lines

Maintenance for the transmission, subtransmission, distribution, and telecommunications lines and associated infrastructure would occur as needed to comply with applicable regulations to ensure the safe and reliable operation of the lines. Maintenance could include repairing conductors, washing or replacing insulators, repairing or replacing other hardware, replacing poles and towers, tree trimming, brush and weed control, and access road maintenance. Additionally, SCE conducts a wide variety of emergency repairs in response to emergency situations, such as damage resulting from high winds, storms, fires, and other natural disasters, and accidents. Such repairs could include replacement of downed poles, transmission towers, or lines or re-stringing conductors. Emergency repairs could be needed at any time.

Project Alternatives

The Environmental Impact Report for the project will identify and analyze reasonable project alternatives for the proposed project. Agencies and the public will be given the opportunity to comment on the project alternatives considered following publication of the Draft EIR during the 45-day comment period. A Notice of Availability (NOA) will be issued at the time of the publication of the Draft EIR to inform the public and agencies that the 45-day comment period for the Draft EIR has been initiated.

C. SCOPE OF THE EIR AND DISCUSSION OF POTENTIAL IMPACTS

CEQA requires agencies to consider environmental impacts that may result from a proposed project, to inform the public of potential impacts and alternatives, and to facilitate public involvement in the assessment process. The Environmental Impact Report prepared for the project will describe in detail the nature and extent of the environmental impacts of the project, and will discuss appropriate mitigation measures for any adverse impacts. The EIR will include discussions of the project objectives, a description of the affected environment, an evaluation of the environmental impacts of the proposed project, and proposed mitigation to reduce environmental impacts to a less-than-significant level.

An initial review of the Proponent’s Environmental Assessment (PEA), prepared by SCE for the project, identified the following potential environmental impacts.

Table 1: Potential Project Issues or Impacts

Environmental Issue Area	Potential Issues or Impact
<i>Air Quality</i>	<ul style="list-style-type: none"> • Construction is anticipated to result in an exceedance of criteria air pollutants above established thresholds.
<i>Biological Resources</i>	<ul style="list-style-type: none"> • Construction of the project could result in impacts on biological resources.
<i>Traffic</i>	<ul style="list-style-type: none"> • Construction of some project elements could result in traffic-related impacts.
<i>Public Services and Utilities</i>	<ul style="list-style-type: none"> • Construction of the project could result in impacts on public services and utilities.

D. PROJECT SCOPING PROCESS AND MEETINGS

Circulation of this NOP opens a public review and comment period on the scope of the CEQA document that begins on June 5, 2015 and ends on July 5, 2015 at 5:00 p.m. All interested parties, including the

public, responsible agencies, and trustee agencies, are invited to learn more about the project, ask questions, and present comments about the Mesa Substation Project at the public scoping meeting:

June 23, 2015

Langley Center – Friendship Room
400 W. Emerson Ave
Monterey Park, CA 91754
Open House: 6:00 p.m. to 6:30 p.m.
Public Comment Session: 6:30 p.m. to 7:30 p.m.

Written scoping comments may also be mailed, faxed, or e-mailed to the CPUC during the NOP comment period specified above. Please include a name, address, and telephone number of a person who can receive future correspondence regarding the EIR. Please send your comments to:

Lisa Orsaba
California Public Utilities Commission
RE: Mesa 500-kV Substation Project
c/o Ecology and Environment, Inc.
505 Sansome Street, Suite #300
San Francisco, CA 94111

Emailed comments may be sent to: Mesa.CPUC@ene.com. Faxed comments may be sent to (415) 398-5326. Voice messages may be left at: (844) 538-6992. For mailed, faxed, and emailed comments, please include your name and mailing address in your comment, and include the words “Mesa Substation Project.” Comments received during the scoping period will be considered during preparation of the Mesa Substation Project EIR.

Agency Comments

This NOP was sent to responsible and trustee agencies, cooperating federal agencies, and the State Clearinghouse. Each responsible agency receiving this NOP is invited to respond by providing the CPUC with specific details about the scope, environmental issues, alternatives, and mitigation measures related to each responsible agency’s area of statutory responsibility that must be explored in the environmental analysis. In accordance with CEQA Guidelines Section 15082(b)(1)(B), responsible and trustee agencies should also indicate their respective level of responsibility for the Mesa Substation Project in their response. Please send responses to the address noted above.

G. ADDITIONAL INFORMATION

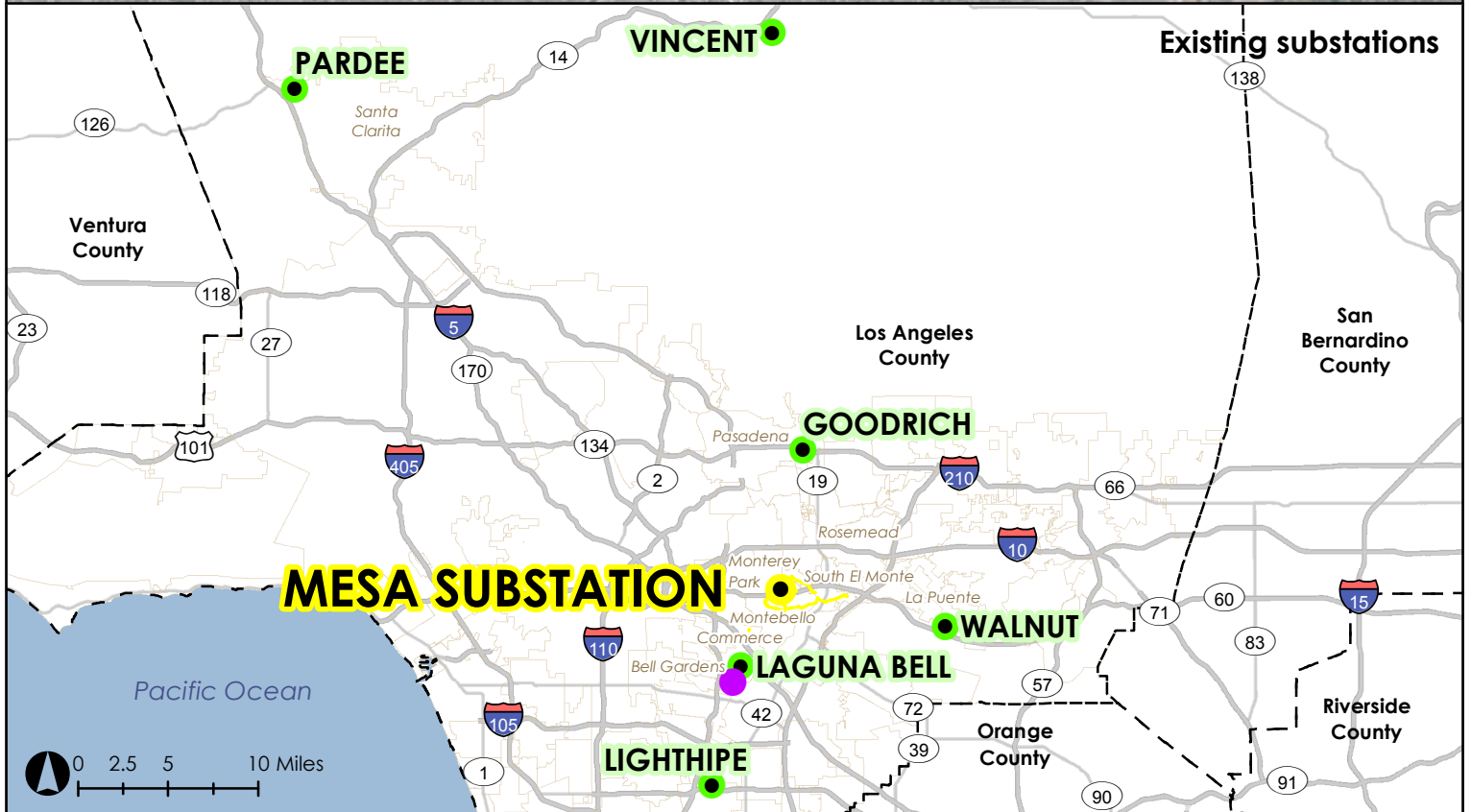
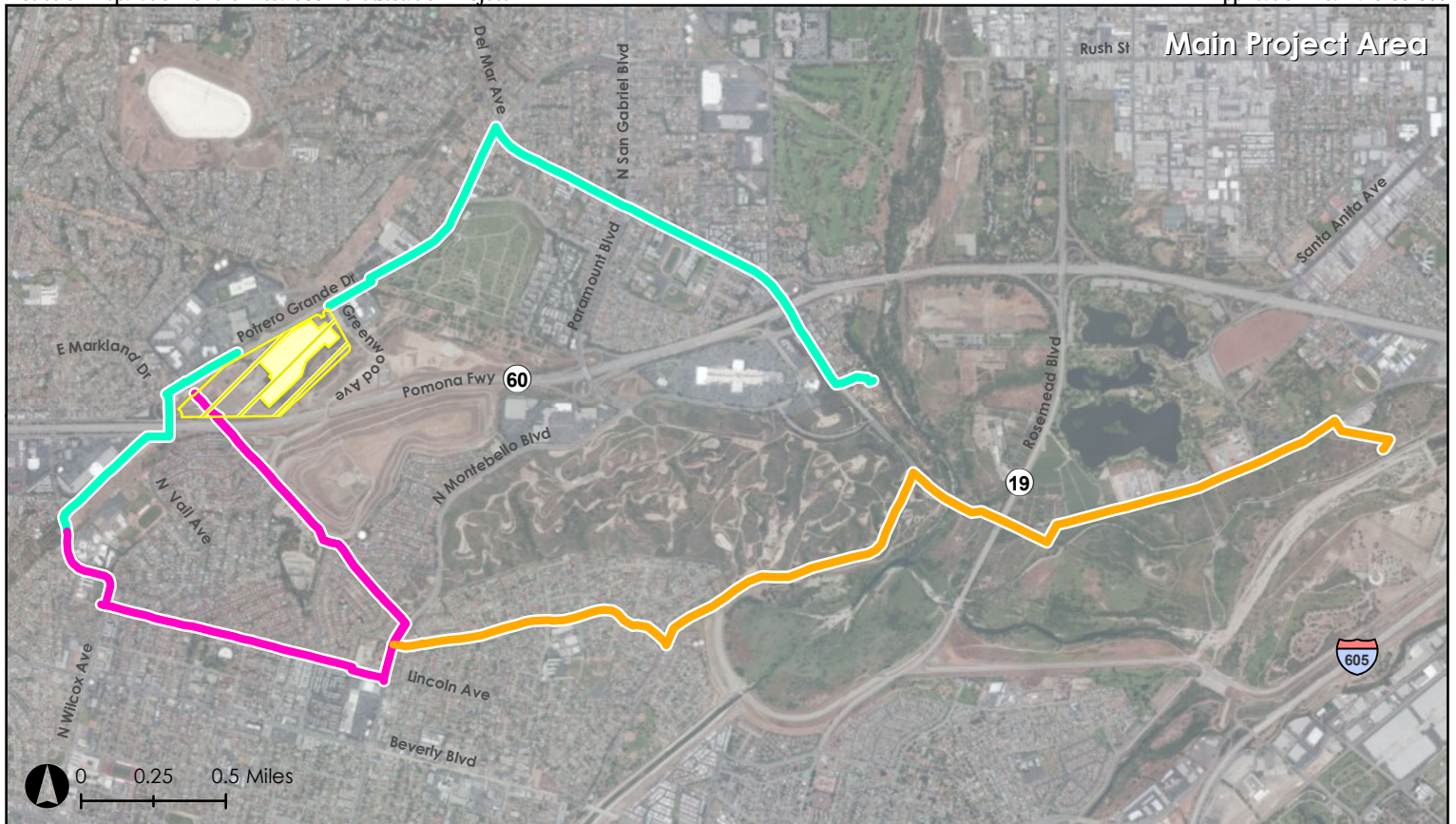
Information about the Mesa Substation Project and the CEQA process is available on the CPUC’s project website: <http://tinyurl.com/mesasubstation>

The website will be used to post all public documents related to the CEQA document. No public comments will be accepted on this website; however, the website will provide a sign-up option for interested parties to be placed on the project mailing list and a printable comment form.

The CEQA Guidelines are available at the following website:

http://www.ceres.ca.gov/topic/env_law/ceqa/guidelines

Appendix G of the CEQA Guidelines, which serves as an environmental checklist for all CPUC CEQA documents, is available at: http://www.ceres.ca.gov/ceqa/guidelines/pdf/appendix_g-3.pdf



- Existing substation
 - Conversion of an existing distribution line from overhead to underground between three street lights
 - Main project area
 - Substations where ground-disturbance will occur
- Telecommunications routes:
- 1
 - 2
 - 3
- Existing substation
 - Proposed substation footprint
 - City boundary
 - County boundary

Figure 1
Mesa 500-kV Substation Project
 Overview of Main Components