

Thank you for coming to the North-South Project public scoping meeting

Please:

- **Sign in**
- **Pick up meeting materials**
- **Fill out a speaker card if you would like to provide an oral comment**
- **Pick up a comment sheet if you would like to provide a written comment**
- **Hold all comments until the end of the presentations**

Scoping period ends **November 23, 2015**

Agenda

- **6:00 – 6:30: Open house**
- **6:30 – 7:00: Presentations**
 - **Project Description/Overview: SoCalGas**
 - **Environmental Review Process**
 - CPUC's Role and the EIR/EIS: Ecology and Environment
 - The Forest Service Role: US Forest Service
- **7:00 – 7:30: Q&A**
- **7:30 – 8:30: Public comments**

Who are we?

Southern California Gas Company (SoCalGas) and San Diego Gas & Electric (SDG&E):

- Applicants and project proponents

California Public Utilities Commission (CPUC):

- Lead agency under CEQA

US Forest Service:

- Lead agency under NEPA

Ecology & Environment:

- Third-party consultant for CPUC and US Forest Service

Purpose of the Public Meeting

- **To inform the public and responsible agencies about the project**
- **To inform the public about the environmental review process**
- **To solicit input on the scope of issues and alternatives to be addressed in the EIR/EIS**

NORTH-SOUTH PROJECT

SoCalGas

San Diego Gas & Electric



NORTH-SOUTH PROJECT

David Buczkowski
Senior Director, Major Projects

Jessica Kinnahan
Project Manager, Environmental Services

ABOUT SoCalGas



LARGEST NATURAL GAS DISTRIBUTION utility
in the US

An active part of the community for more than
140 YEARS

Over **20,000 SQUARE MILES** of service territory

Serve **12 COUNTIES** (over 500 communities)
and more than **21 MILLION PEOPLE**

Over **5.8 MILLION** gas meters

More than **8,000 EMPLOYED**

Introducing a project to enhance clean,
affordable and **RELIABLE**
NATURAL GAS delivery

ENHANCING RELIABILITY

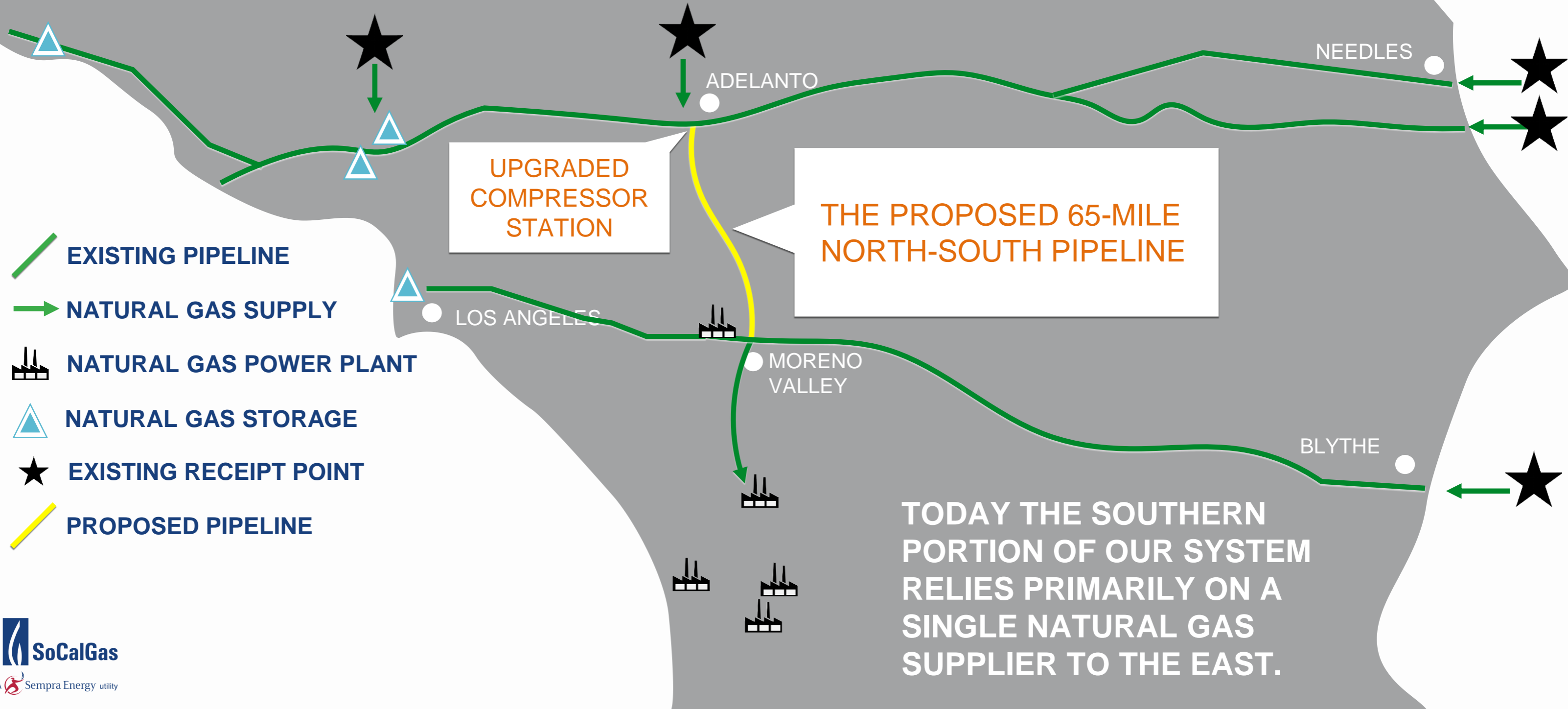
SAFE & ENVIRONMENTALLY SENSITIVE

THE HEALTH OF CALIFORNIA'S
ENVIRONMENT DEPENDS ON NATURAL GAS

THOROUGH REVIEW PROCESS

ECONOMIC BENEFITS

A new North-South pipeline will **ENHANCE RELIABILITY** by diversifying the natural gas supply



TODAY THE SOUTHERN PORTION OF OUR SYSTEM RELIES PRIMARILY ON A SINGLE NATURAL GAS SUPPLIER TO THE EAST.

State-of-the-art technology to ensure **PIPELINE SAFETY**

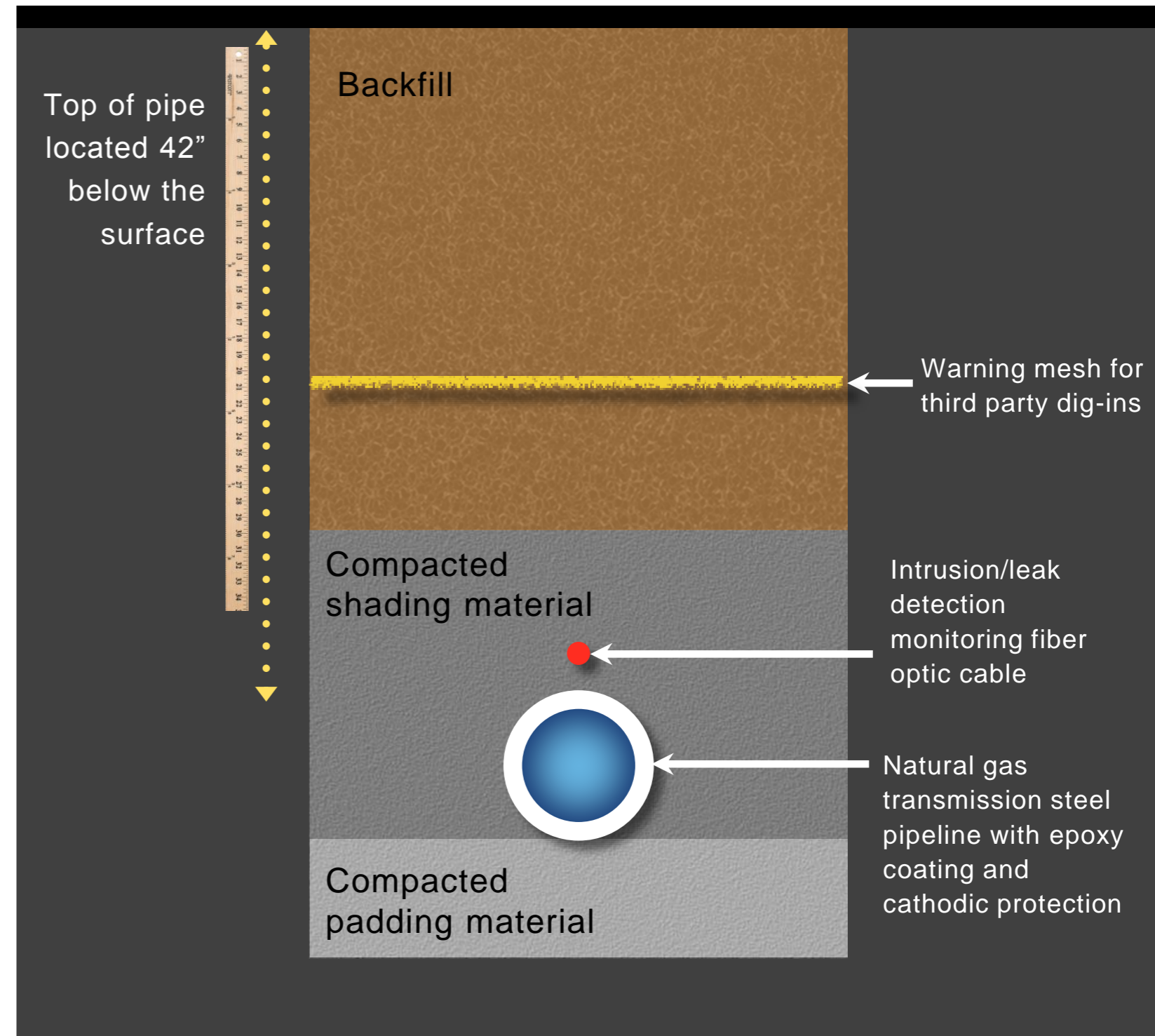
ENGINEERING DESIGN

Typical minimum depth of 42-inches

Automatic shut-off valves located at shorter intervals than required

Safety mesh placed above pipeline to avoid inadvertent intrusion

Rigorous strength testing before operation



State-of-the-art technology to ensure **PIPELINE SAFETY**

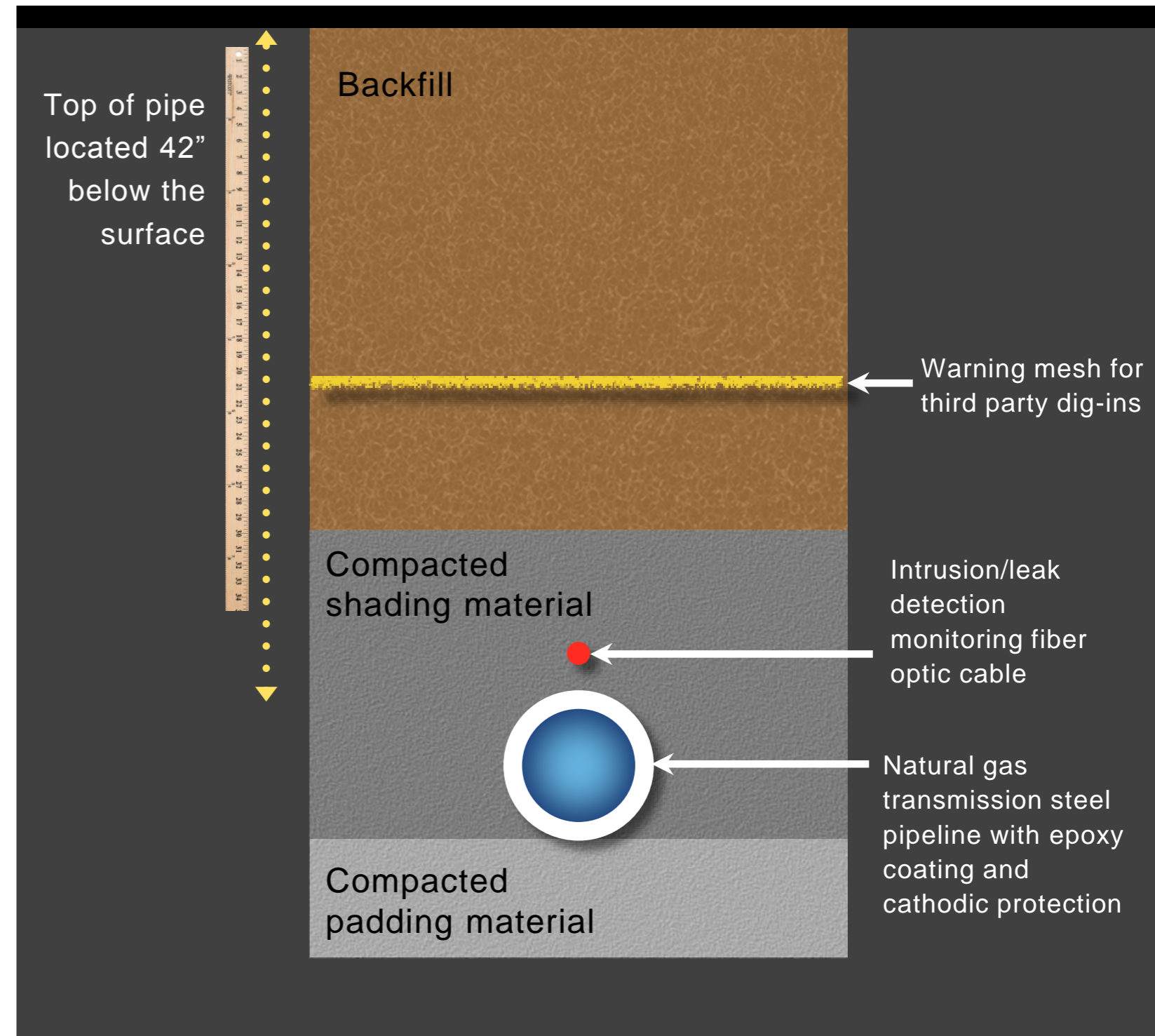
ENGINEERING DESIGN

Continuous, real-time monitoring for leaks using fiberoptic cable

Full integrity assessments with internal “smart pig” inspection within seven year intervals

Electronically monitored and protected from corrosion

Safety markers located along pipeline corridor



ROUTE SELECTION CRITERIA

CONSTRUCTABILITY

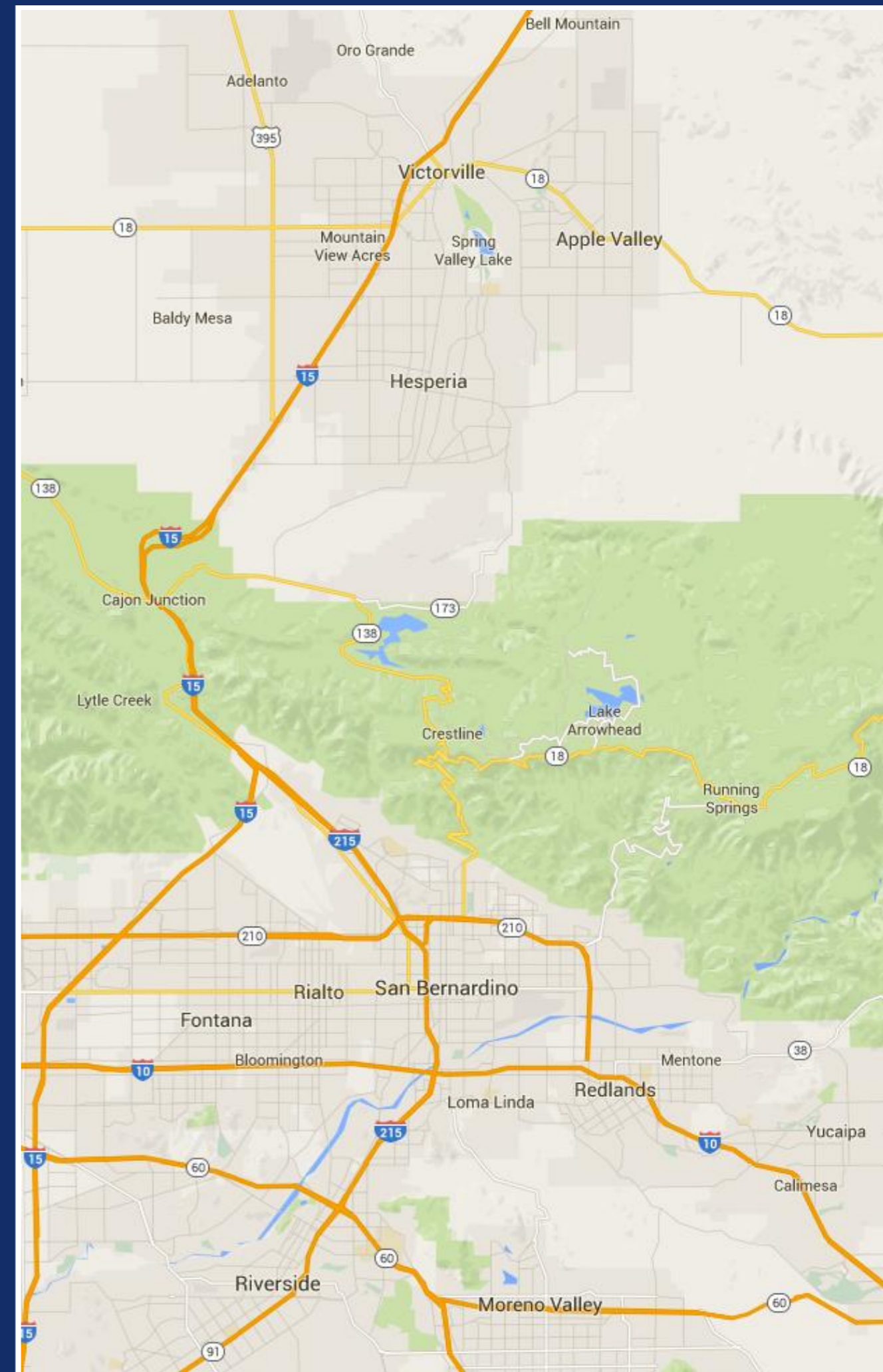
OPERABILITY

MAINTAINABLE

MAXIMIZE USE OF EXISTING RIGHT-OF-WAY AND UTILITY CORRIDORS

AVOIDANCE OF SENSITIVE RESOURCES TO THE EXTENT PRACTICABLE

GEOLOGY AND SOIL



COMMUNITY OUTREACH TO DATE

SoCalGas reached out to the public through four meetings:

RECHE CANYON, April 20 – Invited 342 Households

RECHE CANYON, April 29 – Invited 761 Households

HESPERIA, April 30 – Invited 239 Households

HIGHLAND, May 13 – Invited 586 Households

Direct mail outreach with fact book to 18,000 households in San Bernardino and Riverside Counties along the pipeline route

Numerous meetings with stakeholders

SoCalGas created project information website: reliablenaturalgas.com

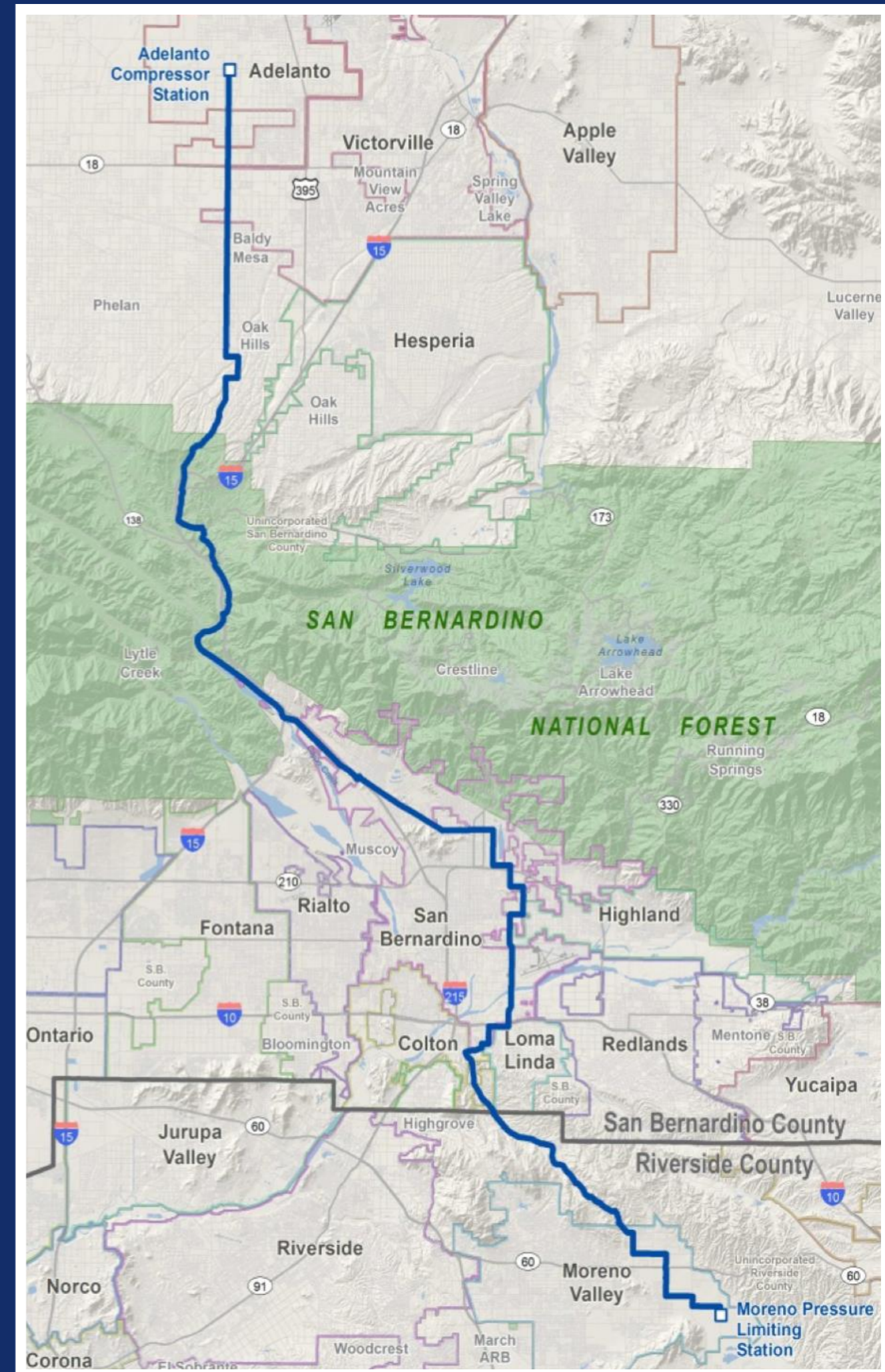
SoCalGas **PREFERRED** **ALIGNMENT**

Avoid and minimize impacts by:

Assessing **COMMUNITY SENSITIVITIES**
BEST MANAGEMENT PRACTICES to protect creeks
and water quality

Pre-construction surveys to **PROTECT ANIMALS**
AND PLANTS

Partnering with a national nonprofit environmental
organization to develop a **ROBUST BIOLOGICAL**
MITIGATION PLAN



CONSTRUCTION MEASURES

Construction **TRAFFIC MANAGEMENT** plan to maintain traffic flow and access to properties

RESTORE paving of affected streets and roadways

Management plan to **MINIMIZE** construction dust

Construction hours will be coordinated to **MAINTAIN TRAFFIC FLOW** and minimize noise

Construction **MONITORS** will oversee activities for compliance with regulations

POST-CONSTRUCTION

RESPONSIBLE operation and maintenance activities

Ongoing safety **INSPECTIONS**

REVEGETATION planting efforts

Wildlife avoidance and **PROTECTION**

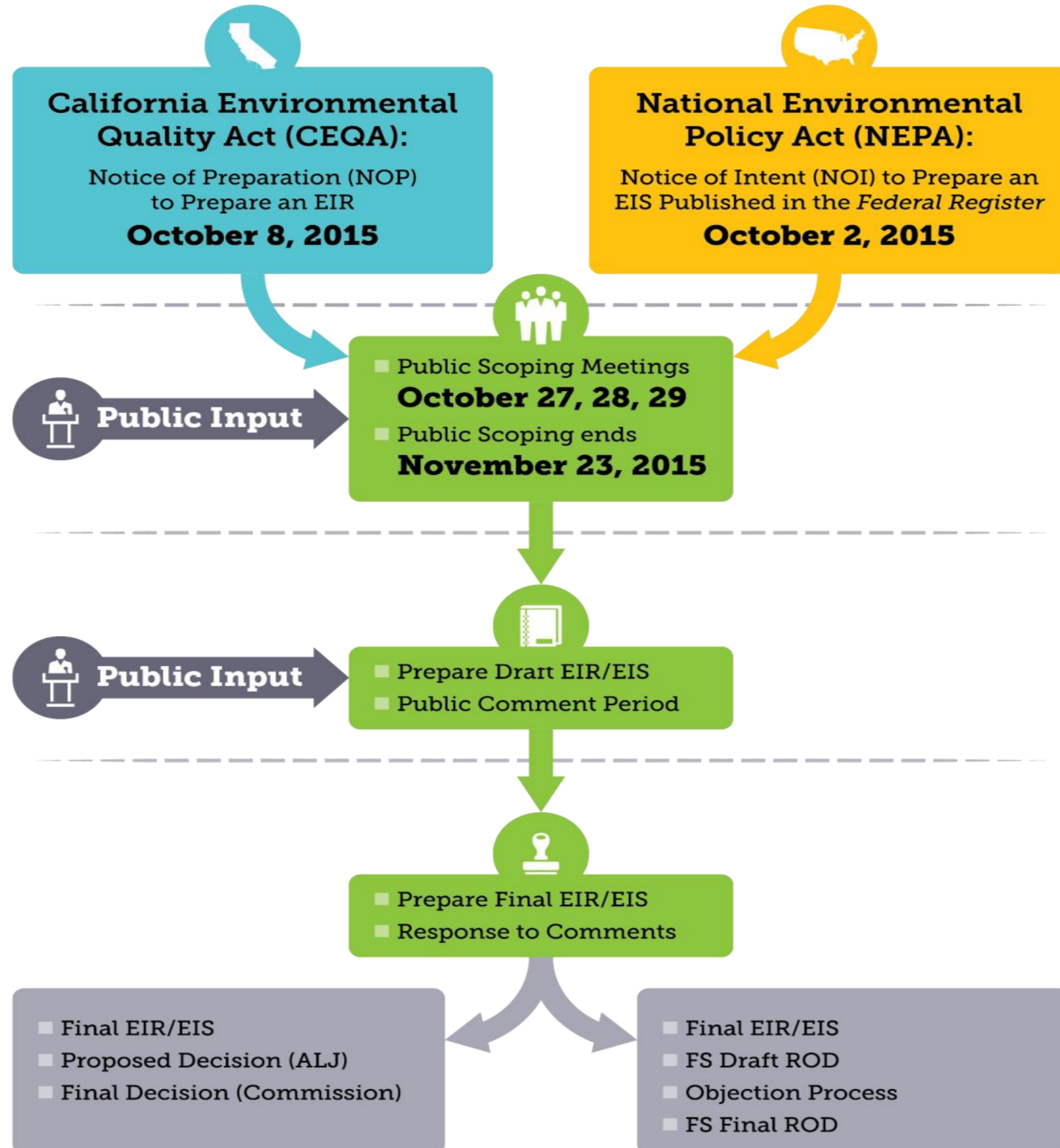
NORTH-SOUTH PROJECT

Thank you

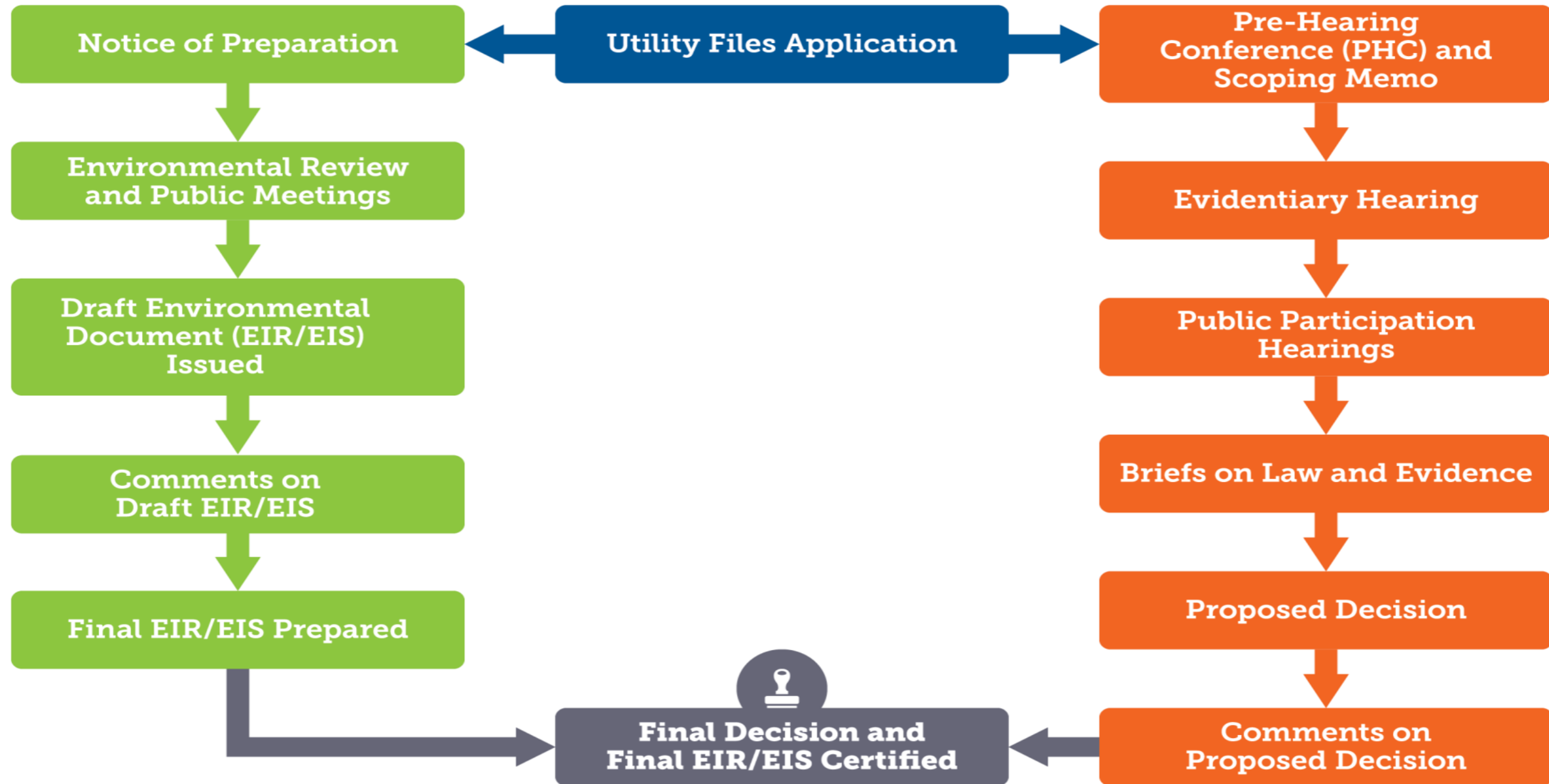


The Environmental Review Process

Joint Environmental Impact Report/ Environmental Impact Statement (EIR/EIS)



CPUC Review Process



Purpose of the EIR/EIS

- **Provide full disclosure of significant effects and means to reduce, avoid, and minimize those effects**
- **Consider a reasonable range of alternatives**
- **Provide opportunity for public involvement in the planning and decision-making process**
- **Ensure that decision makers have a solid basis to make a decision**

What Will Be In the EIR/EIS?

- **Description of the project**
- **Description of alternatives**
- **Analysis of potential environmental impacts**
- **Mitigation**
- **Comparison of alternatives**
- **Other considerations, including cumulative impacts and growth-inducing impacts**
- **Mitigation monitoring and reporting program**

Analysis of environmental impacts

- **Aesthetic Resources**
- **Agricultural and Forestry Resources**
- **Air Quality and Greenhouse Gases**
- **Biological Resources**
- **Cultural and Paleontological Resources**
- **Environmental Justice**
- **Geology, Soils, and Minerals**
- **Hazards and Hazardous Materials**
- **Hydrology and Water Quality**
- **Land Use and Planning**
- **Noise**
- **Public Health and Safety**
- **Public Services and Utilities**
- **Recreation**
- **Socioeconomic Issues**
- **Transportation and Traffic**
- **Cumulative Impacts**

Identification of alternatives

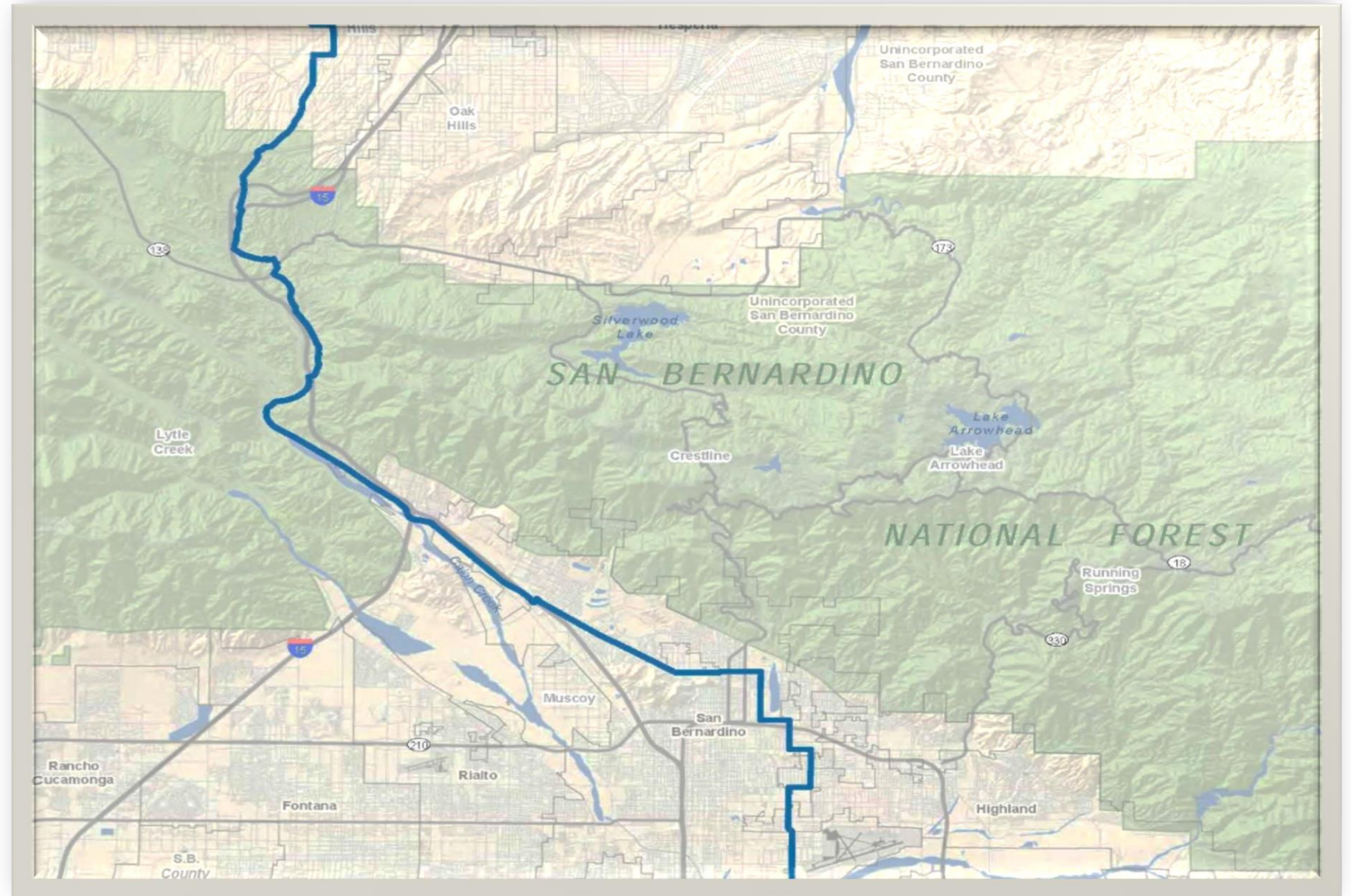
- **The EIR/EIS will evaluate alternatives to the Proposed Project that could potentially reduce, eliminate, or avoid impacts**
- **May include minor route variations, alignment alternatives, and non-physical alternatives**
- **Must meet the project's purpose and need, attain its basic objectives, and avoid or lessen impacts**
- **Will include a No Project/No Action alternative**
- **Some alternatives will be based on input received during the scoping process**

Alternatives Analysis

- **No project/no action alternative**
- **Reasonable range of alternatives determined by:**
 - **Consistency with most project objectives**
 - Meeting all objectives is not required
 - Must consider purpose and need
 - **Ability to reduce or avoid impacts of project**
 - Scoping comments will help to identify impacts
 - **Feasibility**
 - Technical concerns (Can it be built?)
 - Regulatory feasibility (Could it be permitted?)
 - Legal issues (Would it be allowed under law?)

Forest Service Role in Project Review

- **Proposed Action**
 - Issue a permit under the authority of the **Mineral Leasing Act of 1920**
 - Permit would only apply to **National Forest System lands**



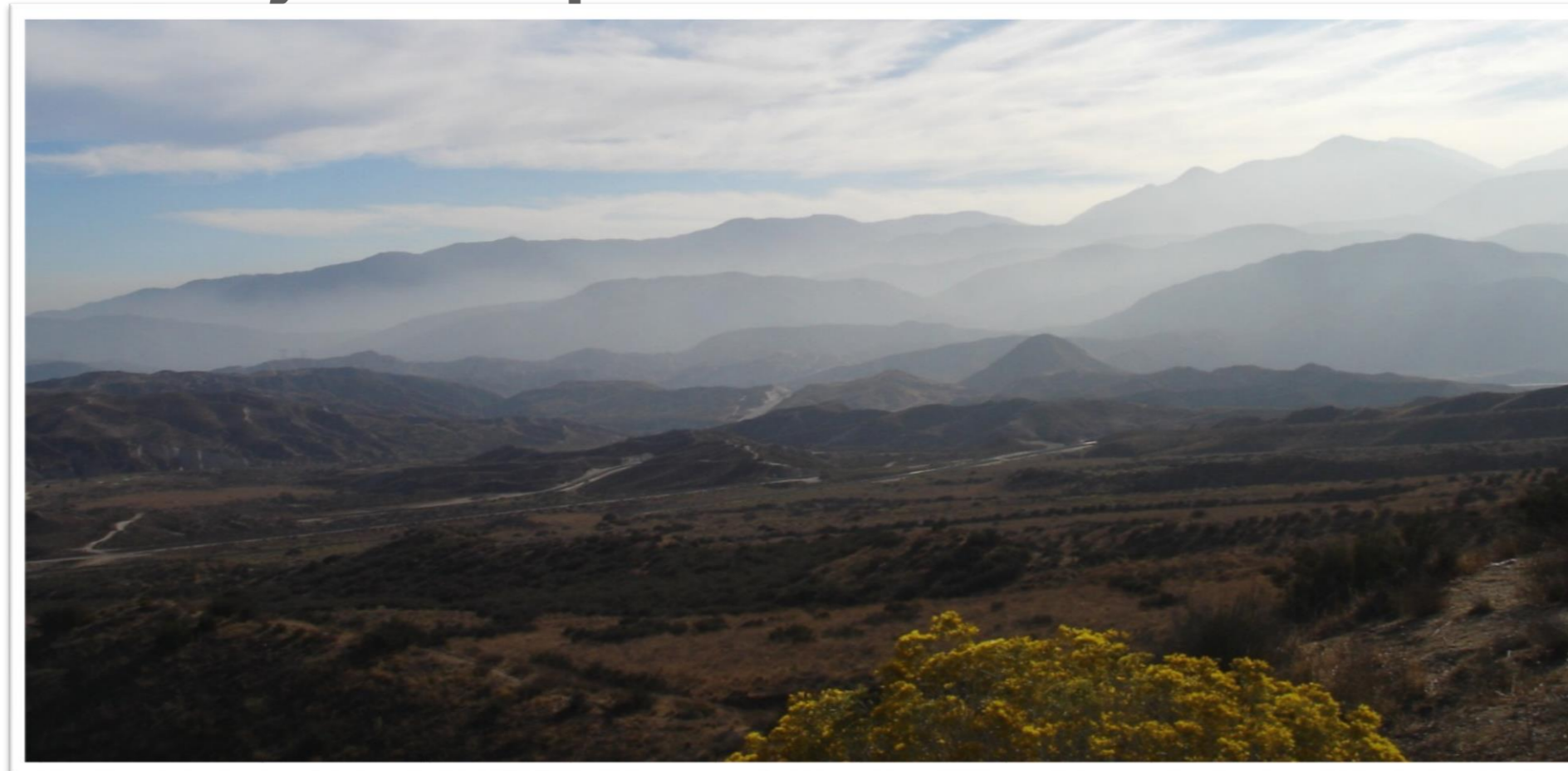
Forest Service Role in Project Review

- **Purpose and Need**
 - **Respond to the SoCalGas application consistent with the Mineral Leasing Act and Forest Service policy, and**
 - **Consistent with the San Bernardino National Forest Land Management Plan (LMP), and**
 - **Consistent with other Federal law and regulation**



Forest Service Role in Project Review

- **Decision process**
 - **Approving officer is the Regional Forester**
 - **The Forest Service decision would only apply to National Forest System lands**
 - **The Forest Service decision is subject to the Forest Service objection process at 36 CFR 218**



How to make comments

Written public scoping comments must be received or postmarked by

November 23, 2015

Please include your name and mailing address and note the “North-South Project”

Email: north-south@ene.com

Mail: Public Scoping Comments

RE: North-South Project

505 Sansome Street, Suite 300

San Francisco, CA 94111

Fax: (415) 398-5326

For more information:

<http://www.cpuc.ca.gov/Environment/info/ene/n-s/northsouth.html>