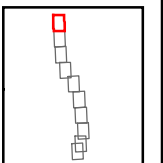
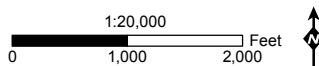


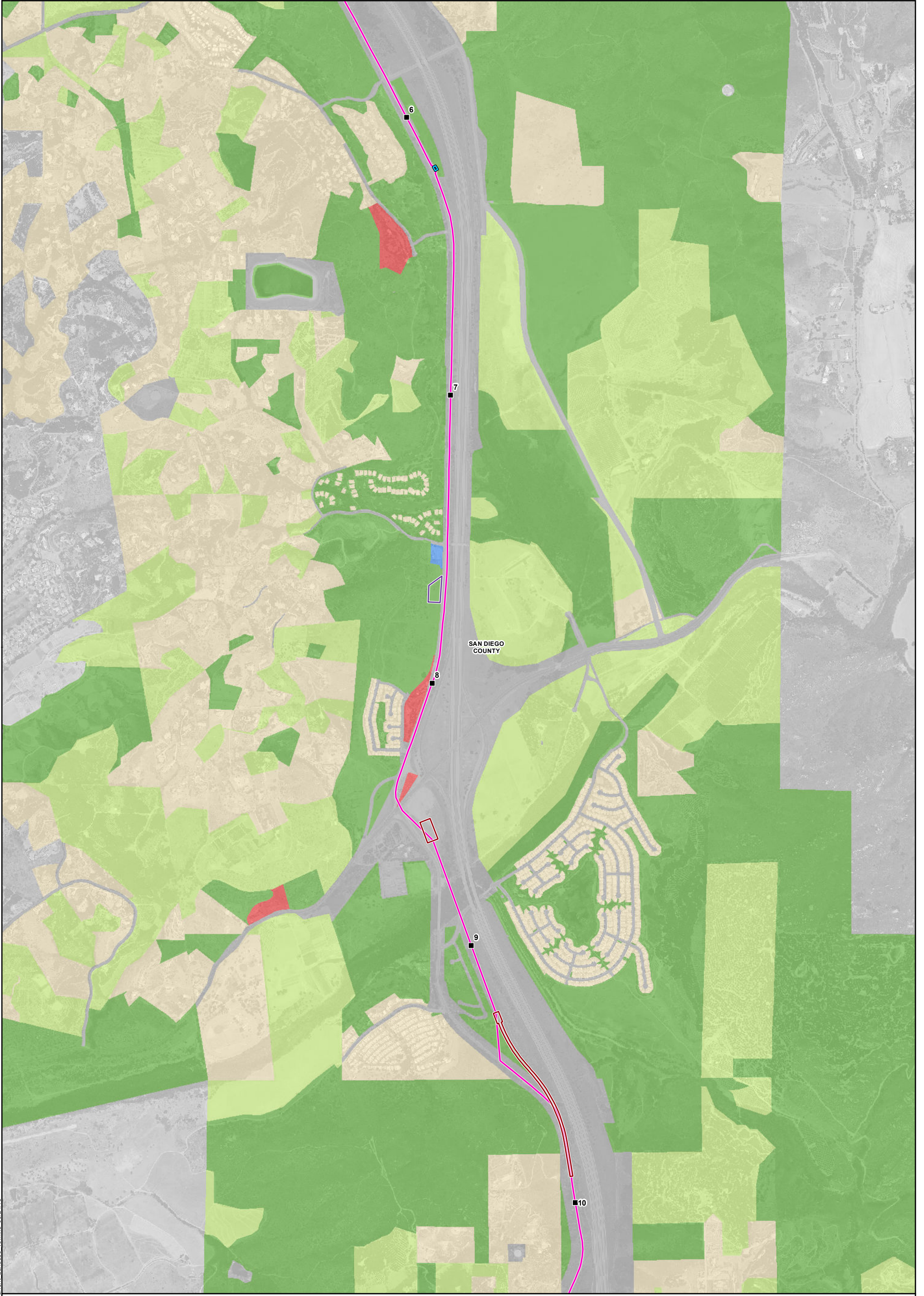
Attachment 4.10-C: Existing Land Uses Map 1 of 10

Pipeline Safety & Reliability Project

- Milepost
- Proposed Project Route
- ▭ Existing Facility
- ▭ Aboveground Facility
- ▭ Horizontal Directional Drill Workspace
- ▭ Laydown Area
- ▭ City/County Boundary
- Current Land Use Categories**
- Commercial
- Infrastructure
- Residential
- Public/Quasi-Public
- Industrial
- Agriculture
- Recreation
- Military



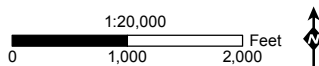
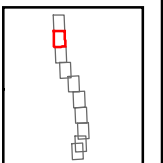
MXDs\FEALandUse\Current_LandUse_v3.mxd 09/24/15



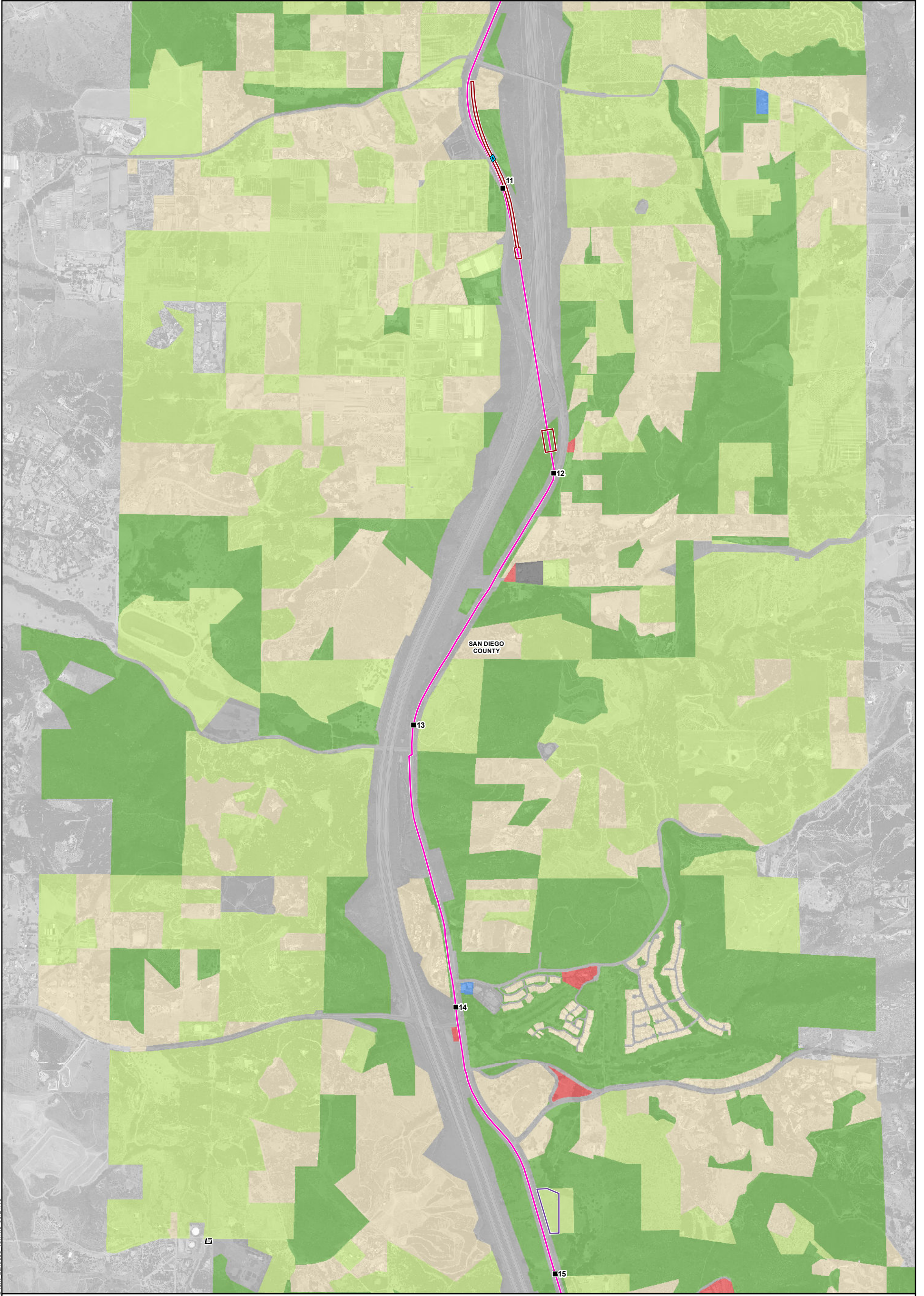
Attachment 4.10-C: Existing Land Uses Map 2 of 10

Pipeline Safety & Reliability Project

- | | | | |
|--------------------------|--|------------------------------------|-------------|
| ■ Milepost | Existing Facility | Current Land Use Categories | Industrial |
| — Proposed Project Route | Aboveground Facility | Commercial | Agriculture |
| | Horizontal Directional Drill Workspace | Infrastructure | Recreation |
| | Laydown Area | Residential | Military |
| | City/County Boundary | Public/Quasi-Public | |



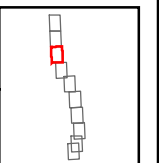
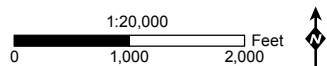
MXDs\PEAL\anduse\Current_Landuse_v3.mxd 09/24/15



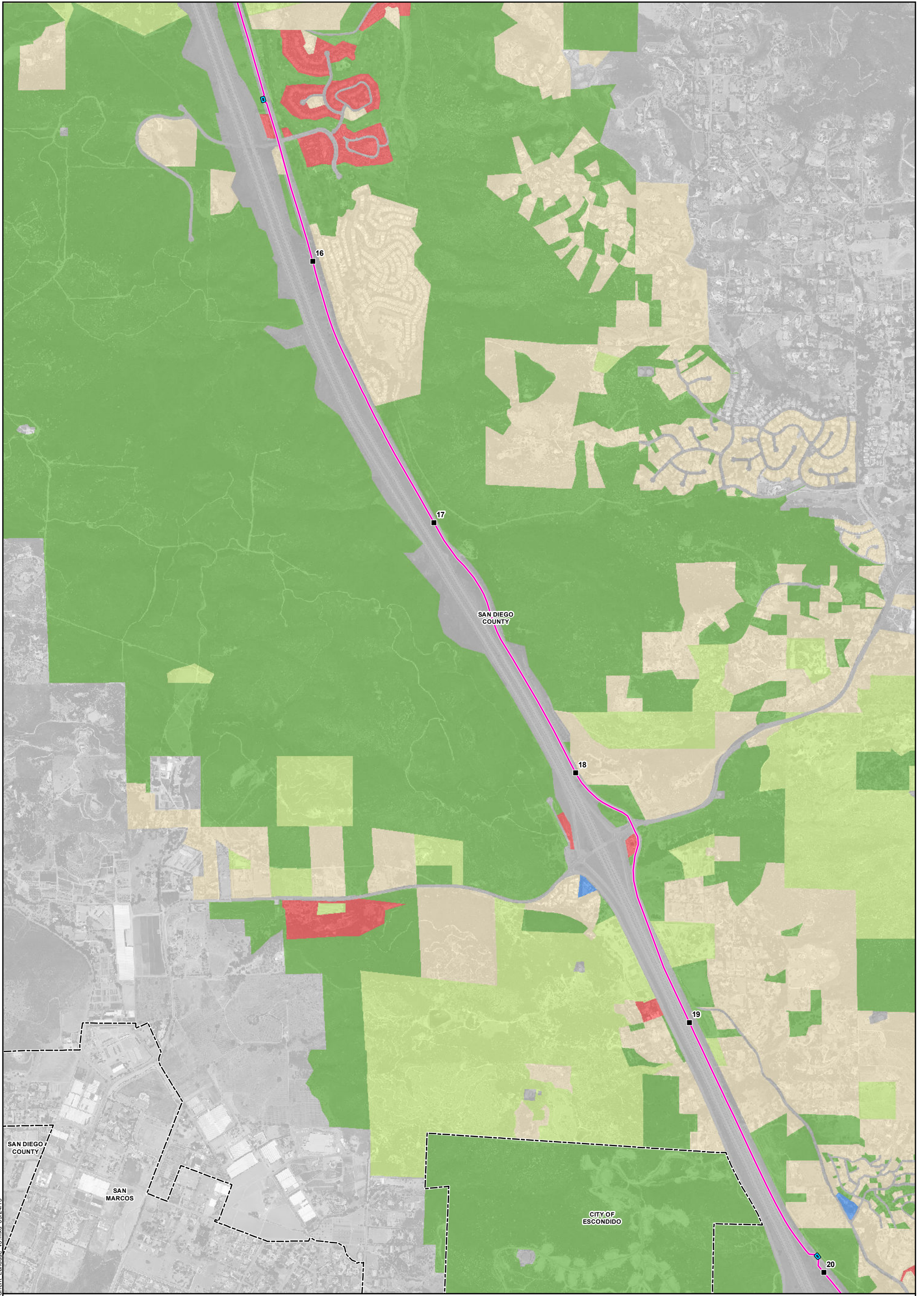
Attachment 4.10-C: Existing Land Uses Map 3 of 10

Pipeline Safety & Reliability Project

- | | | | |
|--------------------------|--|------------------------------------|-------------|
| ■ Milepost | Existing Facility | Current Land Use Categories | Industrial |
| — Proposed Project Route | Aboveground Facility | Commercial | Agriculture |
| | Horizontal Directional Drill Workspace | Infrastructure | Recreation |
| | Laydown Area | Residential | Military |
| | City/County Boundary | Public/Quasi-Public | |



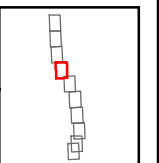
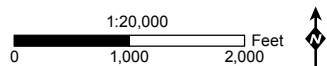
MXDs\FEAL\anduse\Current_Landuse_v3.mxd 09/24/15



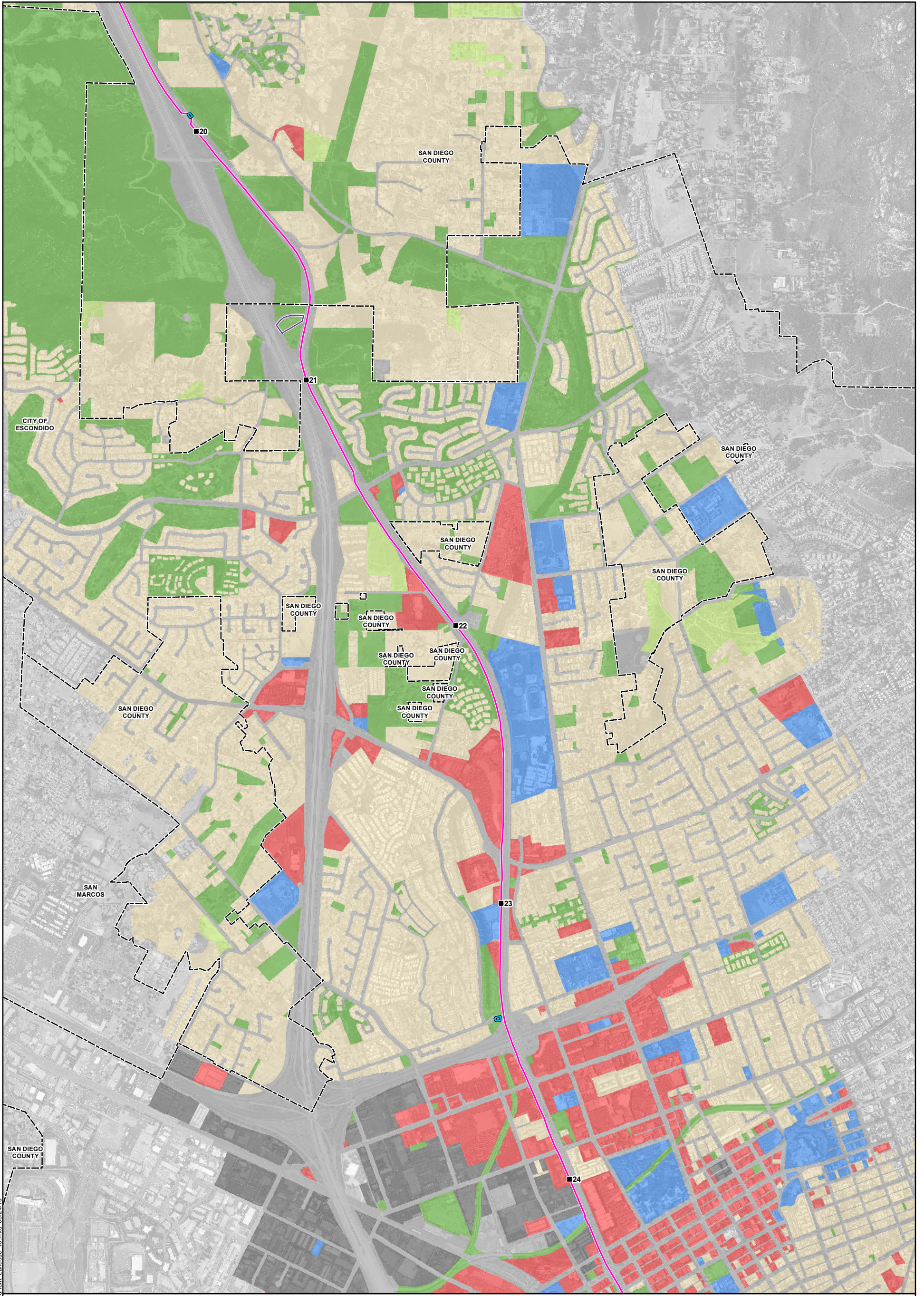
Attachment 4.10-C: Existing Land Uses Map 4 of 10

Pipeline Safety & Reliability Project

- Milepost
- Proposed Project Route
- ▭ Existing Facility
- ▭ Aboveground Facility
- ▭ Horizontal Directional Drill Workspace
- ▭ Laydown Area
- ▭ City/County Boundary
- Current Land Use Categories**
- Commercial
- Infrastructure
- Residential
- Public/Quasi-Public
- Industrial
- Agriculture
- Recreation
- Military



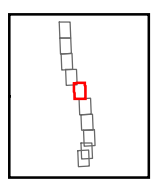
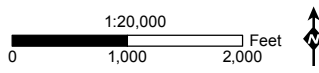
MXDs\FEAL\anduse\Current_Landuse_v3.mxd 09/24/15



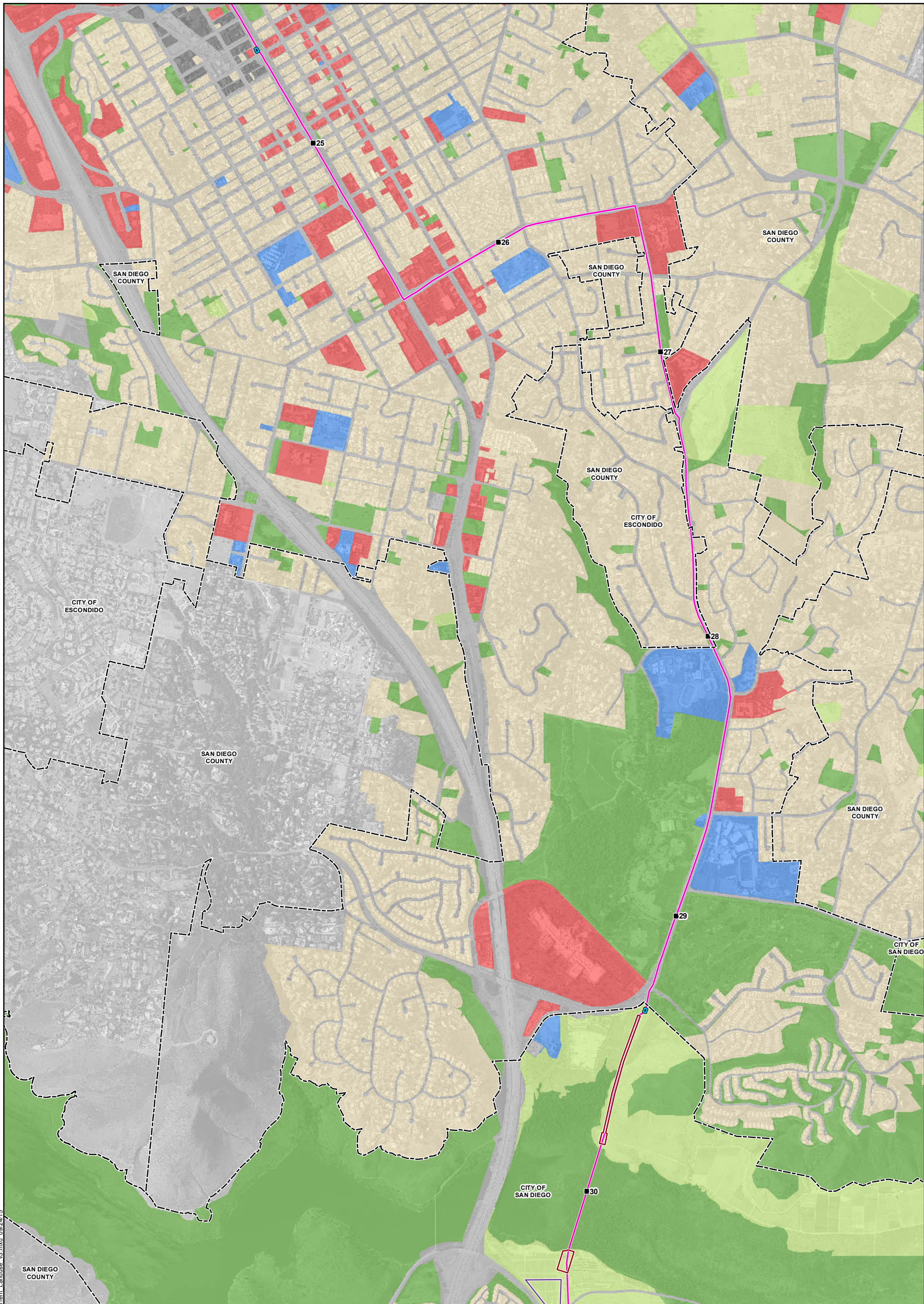
Attachment 4.10-C: Existing Land Uses Map 5 of 10

Pipeline Safety & Reliability Project

■ Milepost	Existing Facility	Current Land Use Categories	Industrial
— Proposed Project Route	Aboveground Facility	Commercial	Agriculture
	Horizontal Directional Drill Workspace	Infrastructure	Recreation
	Laydown Area	Residential	Military
	City/County Boundary	Public/Quasi-Public	



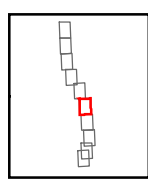
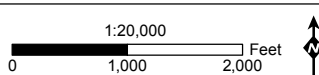
MXDs\PEAL\anduse\Current_Landuse_v3.mxd 09/24/15

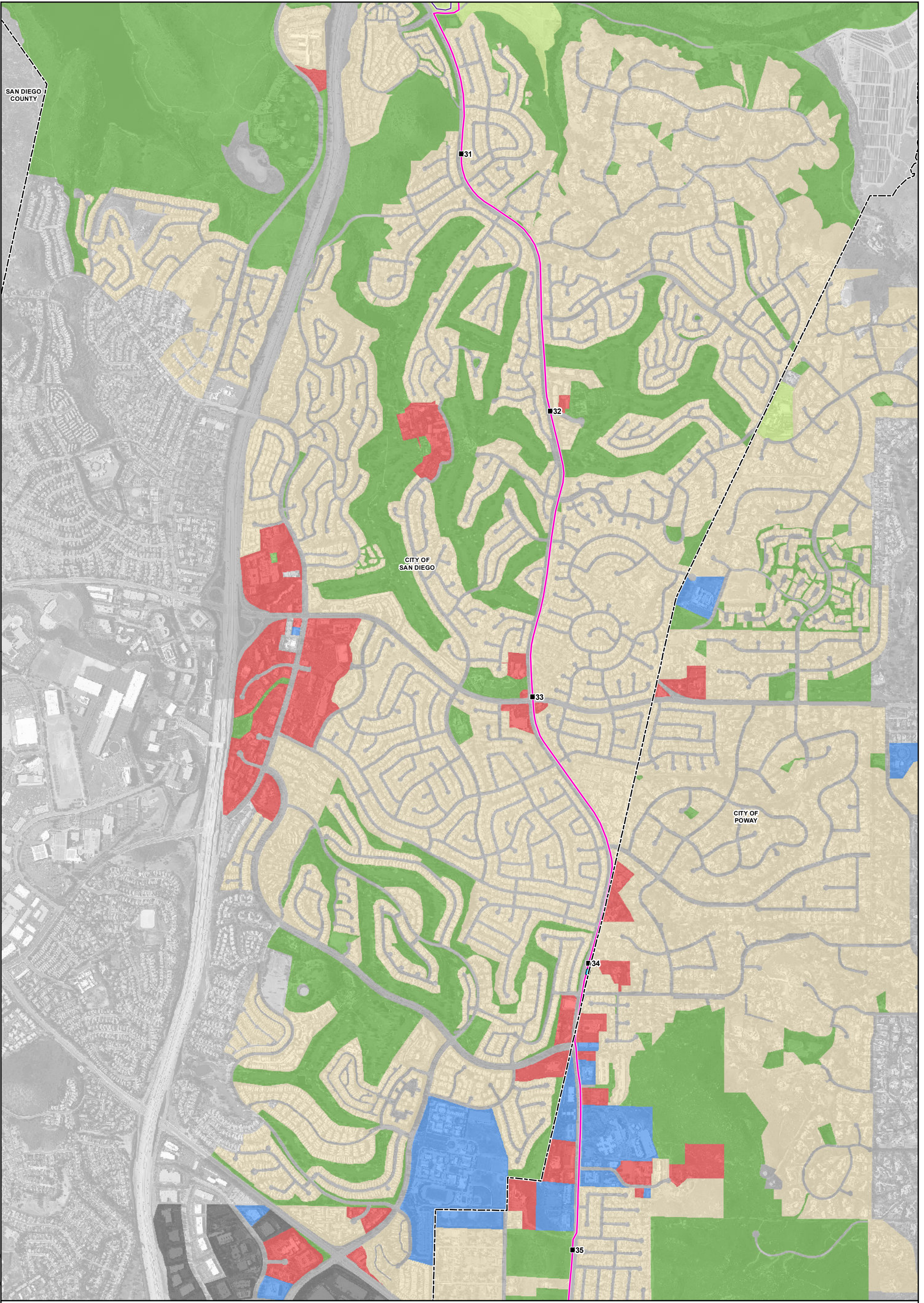


Attachment 4.10-C: Existing Land Uses Map 6 of 10 **Pipeline Safety & Reliability Project**

■ Milepost	Existing Facility	Current Land Use Categories	Industrial
— Proposed Project Route	Aboveground Facility	Commercial	Agriculture
	Horizontal Directional Drill Workspace	Infrastructure	Recreation
	Laydown Area	Residential	Military
	City/County Boundary	Public/Quasi-Public	

MXDs\FEAL\anduse\Current_Landuse_v3.mxd 09/24/15

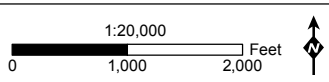
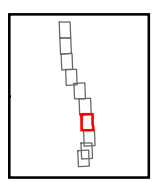




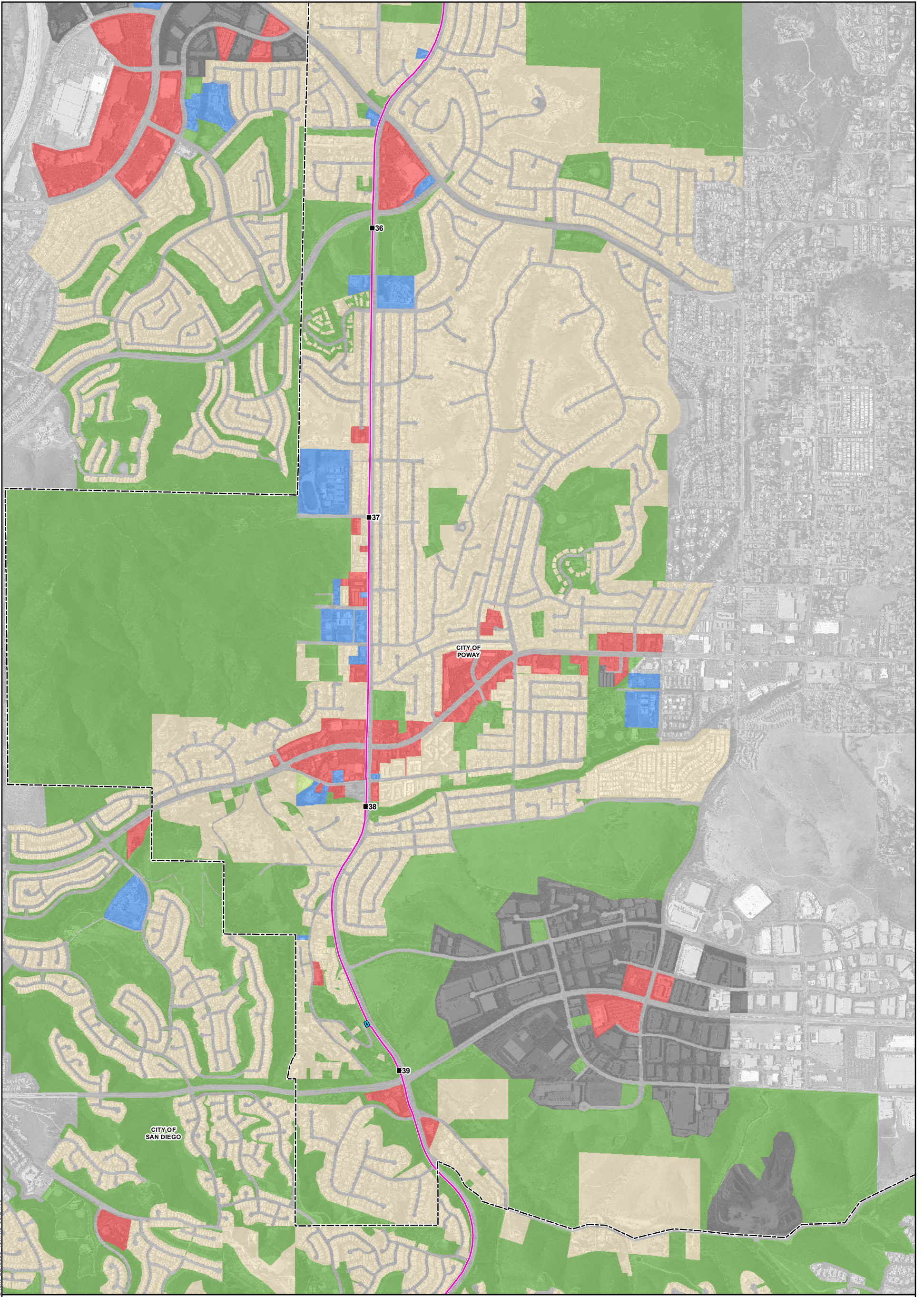
Attachment 4.10-C: Existing Land Uses Map 7 of 10

Pipeline Safety & Reliability Project

- Milepost
- Proposed Project Route
- Existing Facility
- Aboveground Facility
- Horizontal Directional Drill Workspace
- Laydown Area
- City/County Boundary
- Current Land Use Categories**
- Commercial
- Infrastructure
- Residential
- Public/Quasi-Public
- Industrial
- Agriculture
- Recreation
- Military



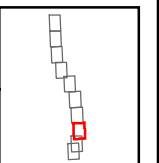
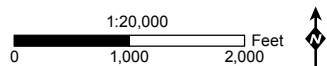
MXD:\PEAL\anduse\Current_Landuse_v3.mxd 09/24/15



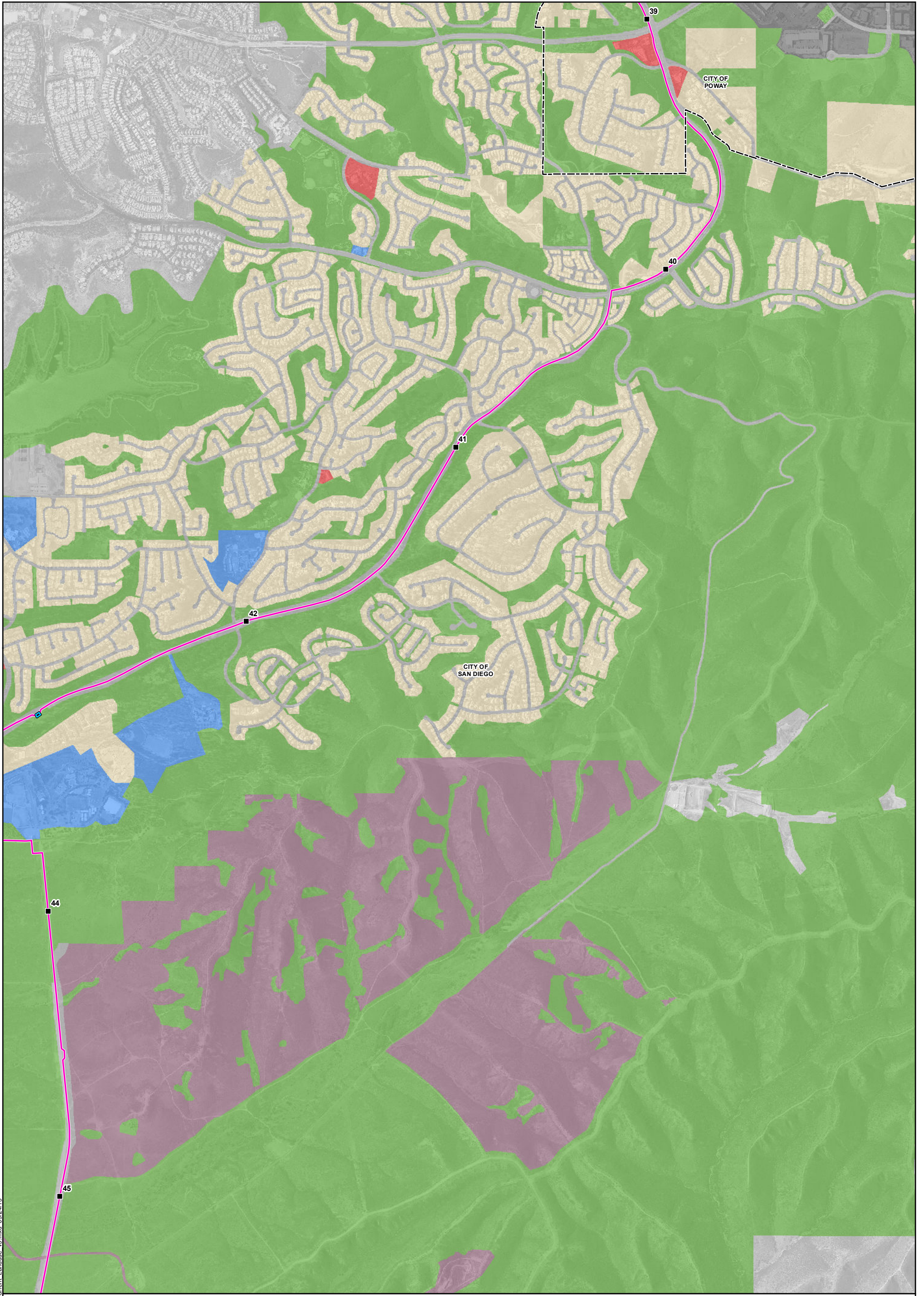
Attachment 4.10-C: Existing Land Uses Map 8 of 10

Pipeline Safety & Reliability Project

- Milepost
- Proposed Project Route
- ▭ Existing Facility
- ▭ Aboveground Facility
- ▭ Horizontal Directional Drill Workspace
- ▭ Laydown Area
- ▭ City/County Boundary
- Current Land Use Categories**
- Commercial
- Infrastructure
- Residential
- Public/Quasi-Public
- Industrial
- Agriculture
- Recreation
- Military



MXDs\PEAL\anduse\Current_Landuse_v3.mxd 08/24/15

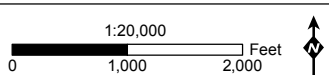
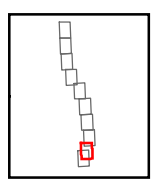


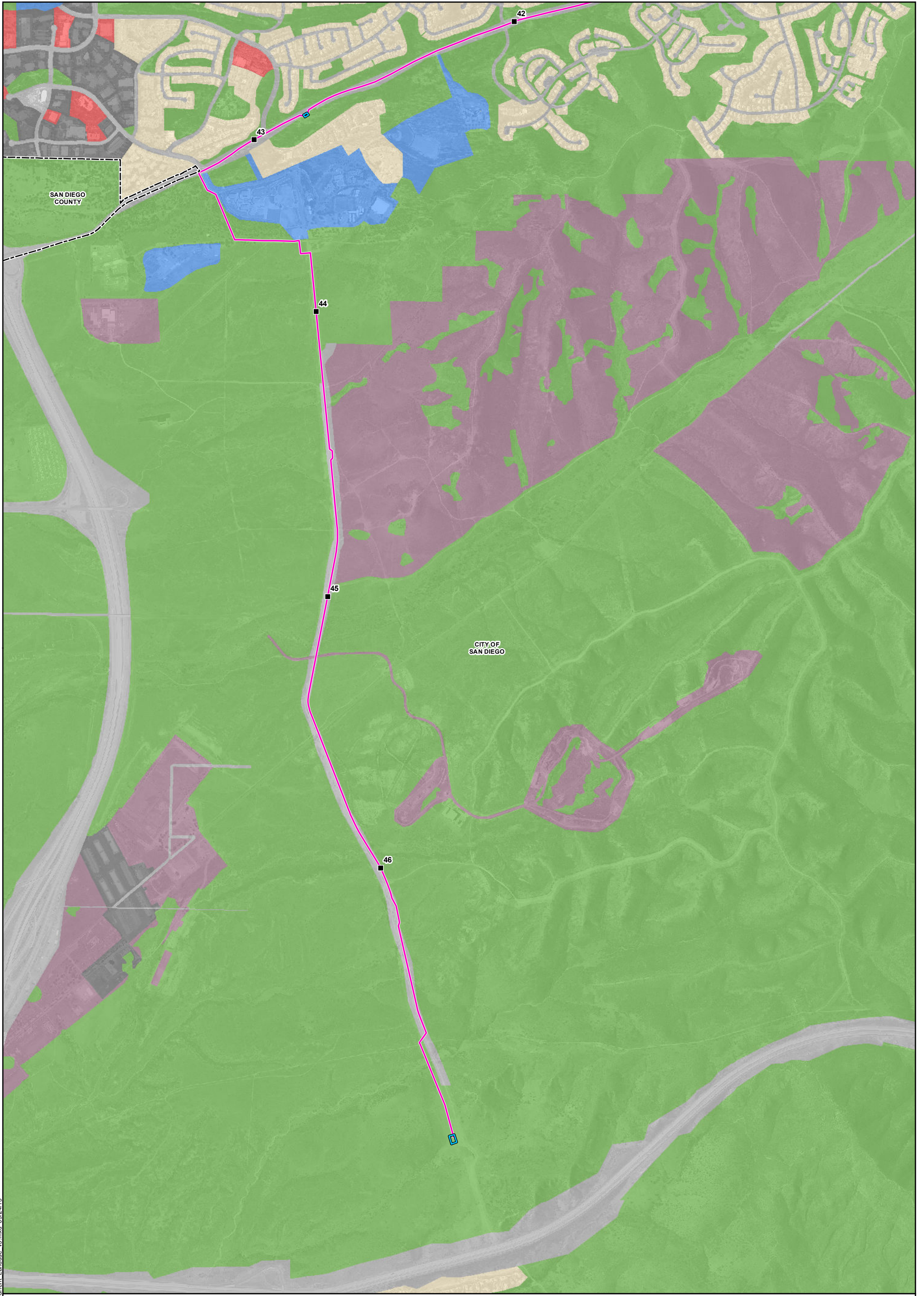
MXDs\FEAL\anduse\Current_Landuse_v3.mxd 09/24/15

Attachment 4.10-C: Existing Land Uses Map 9 of 10

Pipeline Safety & Reliability Project

- | | | | |
|--------------------------|--|------------------------------------|-------------|
| ■ Milepost | Existing Facility | Current Land Use Categories | Industrial |
| — Proposed Project Route | Aboveground Facility | Commercial | Agriculture |
| | Horizontal Directional Drill Workspace | Infrastructure | Recreation |
| | Laydown Area | Residential | Military |
| | City/County Boundary | Public/Quasi-Public | |





MXDs\PEAL\anduse\Current_Landuse_v3.mxd 09/24/15

Attachment 4.10-C: Existing Land Uses Map 10 of 10

Pipeline Safety & Reliability Project

- | | | | |
|------------------------------|--|------------------------------------|-------------|
| ■ Milepost | Existing Facility | Current Land Use Categories | Industrial |
| — Proposed Project Route | Aboveground Facility | Commercial | Agriculture |
| | Horizontal Directional Drill Workspace | Infrastructure | Recreation |
| | Laydown Area | Residential | Military |
| [- - -] City/County Boundary | | Public/Quasi-Public | |

