

SOUTHERN CALIFORNIA EDISON TYPICAL ACCESS ROAD EXHIBIT

EXHIBIT INDEX	
NO.	DESCRIPTION
1	TITLE SHEET AND SHEET INDEX
2	NOTES, LEGEND, SYMBOLS AND GIS NOTES
3	NOTES, LEGEND, SYMBOLS AND GIS NOTES (CONTINUED)
4	TYPICAL EXAMPLE OF PLAN VIEW

ENGINEERING GIS DATA

TITLE SHEET AND SHEET INDEX



**SOUTHERN CALIFORNIA
EDISON** An EDISON INTERNATIONAL Company

SHEET 1 OF 4 REV 0 DATE PLOTTED 12/18/12

LEGEND

ITEM	DESCRIPTION	SYMBOL/ LINETYPE	T/P*	CAD LAYER	CAD GEOMETRY	GIS GEOMETRY
①	PERMANENT PAD FOR OPERATION AND MAINTENANCE WORK AREA. (SEE PLAN FOR SIZE)		P	C-TRAN-TWR-O&M-PAD	CLOSED POLYLINES	POLYGON
②	APPROXIMATE LIMITS OF TEMPORARY CONSTRUCTION DISTURBANCE AREAS WHICH INCLUDES THE POLE LAYDOWN, MATERIAL LAYDOWN AND OTHER CONSTRUCTION WORK AREAS. ALSO INCLUDED ARE PORTIONS OF THE PERMANENT DISTURBANCE AREAS FOR ACCESS ROADS, OPERATION AND MAINTENANCE WORK AREAS. (UNLESS OTHERWISE SHOWN ON PLANS)		T	C-CONST-DIST	CLOSED POLYLINES	POLYGON
③	CULVERT		P	C-STRM-STRC-CLVRT	POLYLINES	LINE
④	WATER BAR		P	C-STRM-STRC-WTRB	CLOSED POLYLINES	POLYGON
⑤	EDGE OF PERMANENT ROAD		P	C-ROAD-N	CLOSED POLYLINES	POLYGON
⑥	RIP-RAP ENERGY DISSIPATER - STORM DRAIN STRUCTURES HATCHING AND BOUNDARY		P	C-STRM-STRC-RRAP C-STRM-STRC-PATT	CLOSED POLYLINES HATCHING: GRAVEL	POLYGON N/A
⑦	WIDEN INSIDE RADIUS OF CURVE BY 400/R WHERE R=C _Q RADIUS. PROVIDE 3:1 TAPERS AT THE TANGENT TO THE EDGE OF TRAVELED WAY.		P	C-ROAD-N		
⑧	McCARTHY DRAIN FLUME, "MAC DRAIN"		P	C-STRM-STRC-DRNS-MAC-N	POLYLINES	LINE
⑨	DAYLIGHT LINE		P	C-GRAD-DLGT	LINETYPE: CUTFIL	POLYGON
⑩	NEW ACCESS ROAD CENTER LINE		P	C-ROAD-CNTR-N	POLYLINE	LINE
⑪	STORM DRAIN STRUCTURE SHOWING THE EDGE OF A CONC. LINED DITCH, AT THE TOP OF A CUT SLOPE		P	C-STRM-STRC-VDITCH-BROW-N	CLOSED POLYLINES	POLYGON
⑫	TRANSMISSION LINE ALIGNMENT		P	C-TRAN-LINE-CL-N	POLYLINES	N/A
⑬	PERMANENT EXISTING ACCESS ROAD		P	C-ROAD-E	CLOSED POLYLINES	POLYGON

FOR CONTINUATION SEE NEXT SHEET

*T=TEMPORAY
P=PERMANENT

ENGINEERING GIS DATA

NOTES, LEGEND, SYMBOLS
AND GIS NOTES







**SOUTHERN CALIFORNIA
EDISON**


An EDISON INTERNATIONAL Company

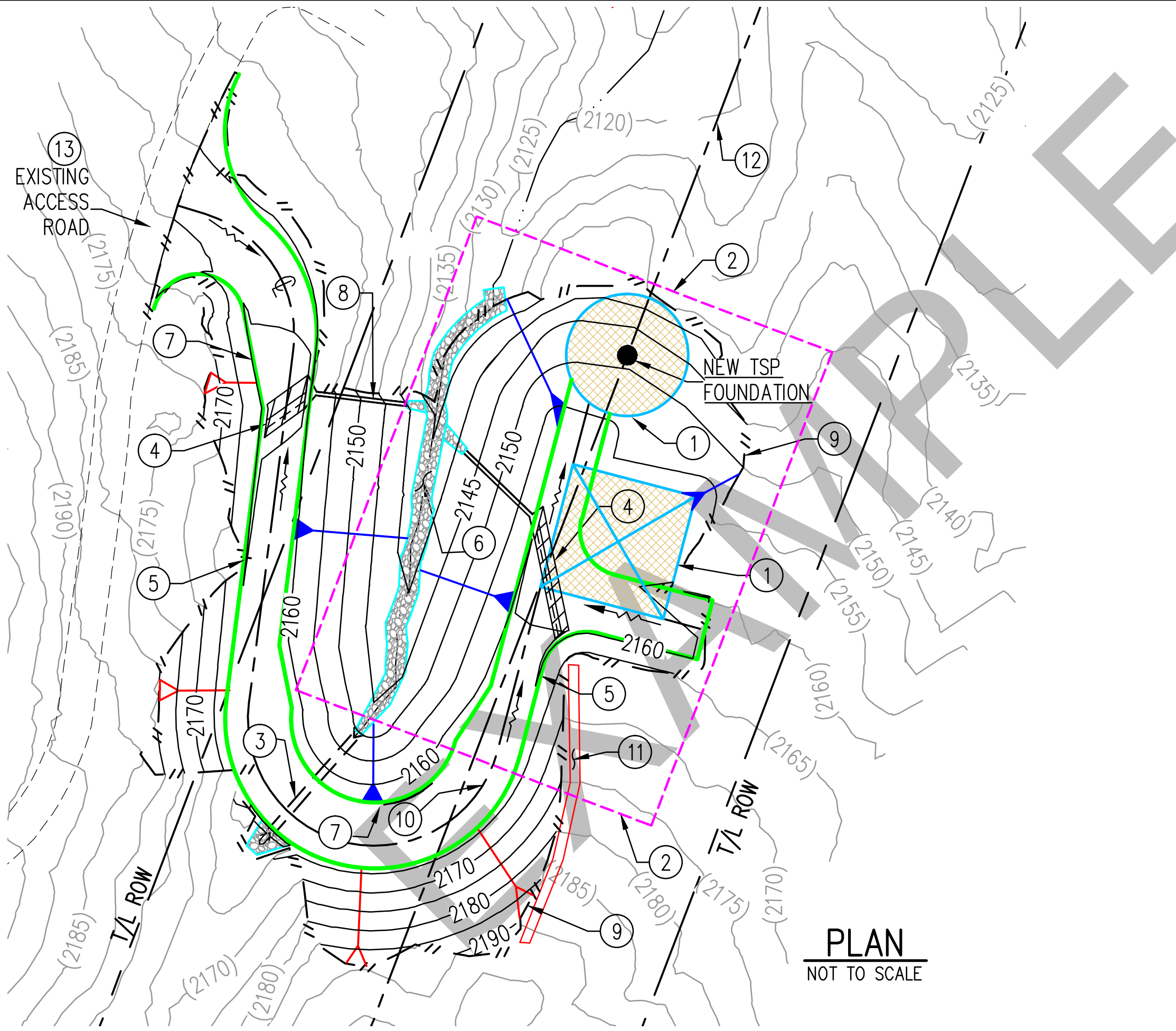
SHEET 2 OF 4 REV 0 DATE PLOTTED 12/18/12

LEGEND

ITEM	DESCRIPTION	SYMBOL/ LINETYPE	T/P*	CAD LAYER	CAD GEOMETRY	GIS GEOMETRY
CONTINUED FROM PREVIOUS SHEET						
	TUBULAR STEEL POLE (TSP)			C-TRAN-POLE-N	CIRCLE, HATCH	N/A
	CUT SLOPE GRADING SYMBOL			C-GRAD-SYM-CUT	LINES	N/A
	FILL SLOPE GRADING SYMBOL			C-GRAD-SYM-FILL	LINES	N/A
	FINISHED GRADE	— 2170 —		C-TOPO-MAJR-N C-TOPO-CONT-TEXT-N	POLYLINES	N/A
	EXISTING GRADE	— (2170) —		C-TOPO-MAJR-E C-TOPO-CONT-TEXT-E	POLYLINES	N/A
	DIRECTION OF WATER FLOW IN NEW ACCESS ROAD			C-GRAD-FLOWARROW	POLYLINES	N/A
	WATER COURSE FLOW LINE	— · · · —		C-TOPO-FLOWLINE	POLYLINES	N/A

EXAMPLE


ENGINEERING GIS DATA
NOTES, LEGEND, SYMBOLS AND GIS NOTES (CONTINUED)
 SOUTHERN CALIFORNIA EDISON <small>An EDISON INTERNATIONAL Company</small>
SHEET 3 OF 4 REV 0 DATE PLOTTED 12/18/12



ABBREVIATIONS:
 T/L - TRANSMISSION LINE
 C - CENTERLINE
 ROW - RIGHT OF WAY

FOR NOTES, LEGEND, SYMBOLS AND
 GIS NOTES SEE SHEET 2, & 3 OF 4

PLAN
 NOT TO SCALE

ENGINEERING GIS DATA	
TYPICAL EXAMPLE OF PLAN VIEW	
 SOUTHERN CALIFORNIA EDISON <small>An EDISON INTERNATIONAL Company</small>	
SHEET 4 OF 4 REV 0 DATE PLOTTED 12/18/12	