

SOUTH ORANGE COUNTY RELIABILITY ENHANCEMENT PROJECT

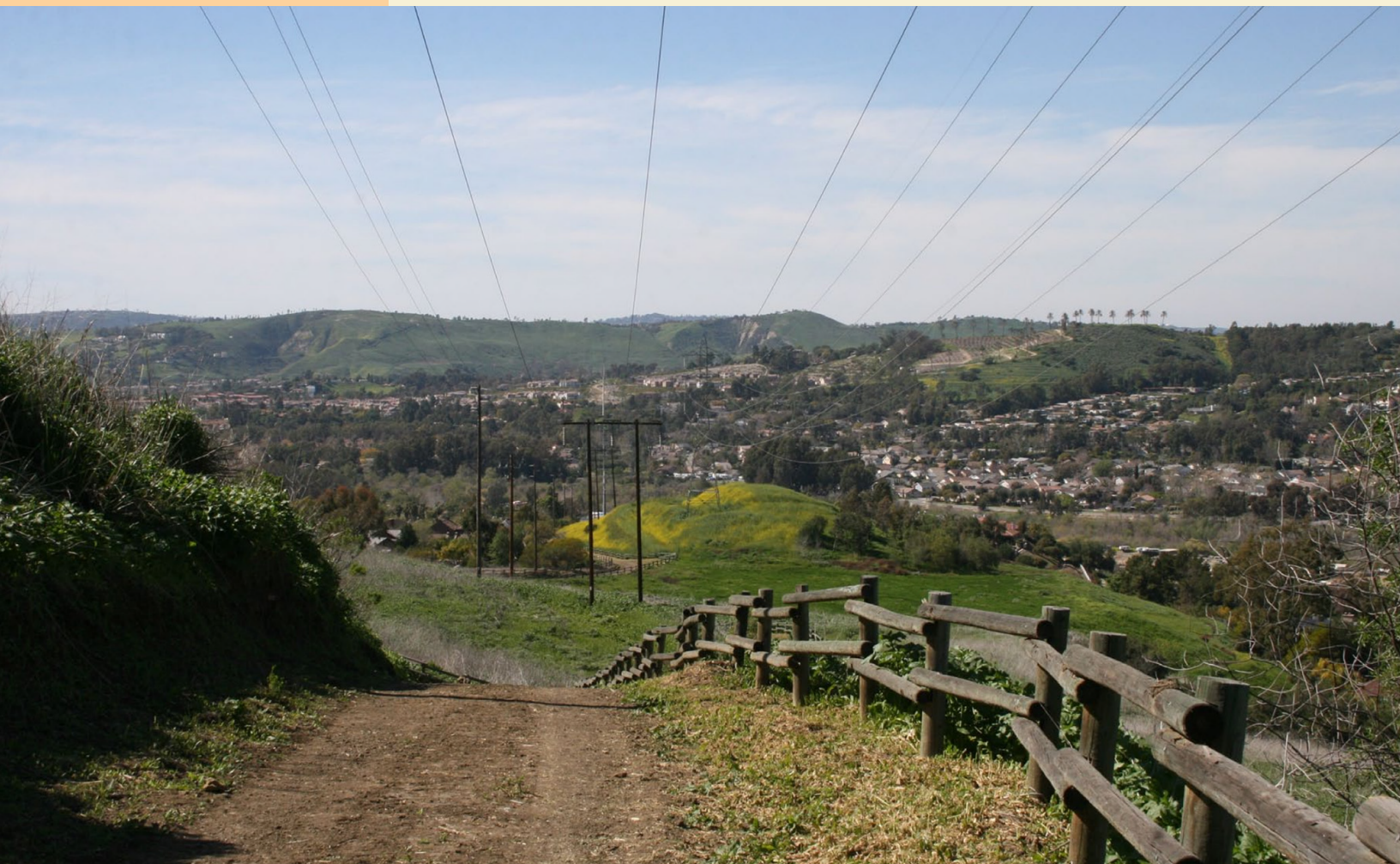
**FINAL
ENVIRONMENTAL IMPACT REPORT**

EXHIBIT 1

APRIL 2016

A.12-05-020

SCH NO. 2013011011



Prepared for:



**State of California
Public Utilities
Commission**

Prepared by:



ecology and environment, inc.
Global Environmental Specialists

Table of Contents

Executive Summary		ES-1
1.0	Introduction	1-1
1.1	Background Information	1-1
1.1.1	South Orange County 138-kV System	1-1
1.1.2	Transmission and Electrical Demand Planning	1-4
1.1.3	Historical and Projected South Orange County System Demand	1-6
1.2	Purpose and Objectives of the Proposed Project	1-8
1.2.1	Objectives of the Proposed Project (Developed by the CPUC)	1-8
1.2.2	Applicant’s Stated Objectives	1-10
1.3	CPUC Process and Intended Uses of the EIR	1-10
1.3.1	CPUC Process	1-10
1.3.2	Intended Uses of this EIR	1-11
1.3.3	Other Public Agencies	1-11
1.3.24	Public Scoping	1-12
1.3.35	Screening of Alternatives to the Proposed Project	1-13
1.3.46	Public Comment on the Draft EIR	1-13
1.3.57	Final EIR	1-14
1.3.68	Organization of the EIR	1-14
2.0	Project Description	2-1
2.1	Overview of the Proposed Project	2-1
2.2	Setting and Location of the Proposed Project	2-1
2.2.1	South Orange County 138-kV System	2-4
2.3	Description of Components of the Proposed Project	2-8
2.3.1	San Juan Capistrano Substation	2-8
2.3.2	Talega Substation Modifications	2-14
2.3.3	New Transmission and Distribution Lines	2-15
2.3.4	Telecommunications	2-33
2.3.5	Rights-of-Way	2-33
2.3.6	Fire Safety Features	2-35
2.4	Construction of the Proposed Project	2-35
2.4.1	Construction Schedule, Personnel, and Equipment	2-35
2.4.2	Land Disturbance	2-39
2.4.3	General Construction Methods and Materials	2-41
2.4.4	Substation Construction Activities	2-44
2.4.5	Transmission Line Construction and Removal	2-49
2.4.6	Helicopter Use	2-56
2.4.7	12-kV Distribution Line Construction	2-57
2.4.8	Staging Areas, Stringing Sites, Work Areas, and Helicopter Fly Yards	2-58
2.4.9	Roadway and Railway Crossings and Road Closures	2-61

	2.4.10 Final Engineering and Additional Environmental Analysis	2-62
2.5	Operation and Maintenance	2-63
	2.5.1 Substation Operation and Maintenance	2-63
	2.5.2 Transmission and 12-kV Distribution Line Operation and Maintenance	2-64
	2.5.3 Fire Prevention during Operations.....	2-64
	2.5.4 Water Use during Operations.....	2-65
	2.5.5 Nonhazardous Waste, Hazardous Waste, and Chemical Storage and Use.....	2-65
2.6	Applicant Procedures, Plans, Standards, and Proposed Measures.....	2-65
	2.6.1 Applicant Procedures, Plans, and Standards.....	2-65
	2.6.2 Applicant Proposed Measures.....	2-69
2.7	Permitting, Consultation, and Approval Requirements	2-75
	2.7.1 California Environmental Quality Act.....	2-77
	2.7.2 National Environmental Policy Act	2-77
3.0	Description of Alternatives.....	3-1
3.1	Alternatives Development and Screening Process	3-1
	3.1.1 Alternatives Screening Methodology and Criteria	3-1
	3.1.2 Alternatives to Transmission Facilities.....	3-2
	3.1.3 Alternatives Considered in the Screening Report.....	3-2
3.2	Alternatives Evaluated in this EIR.....	3-3
	3.2.1 Alternative A – No Project	3-3
	3.2.2 Alternative B1 – Reconductor Laguna Niguel–Talega 138-kV Line	3-7
	3.2.3 Alternative B2 – Use of Existing Transmission Lines (Additional Talega–Capistrano 138-kV Line)	3-9
	3.2.4 Alternative B3 – Alternative B3 – Phased Construction of Alternatives B1 and B2.....	3-9
	3.2.5 Alternative B4 – Rebuild South Orange County 138-kV System ...	3-10
	3.2.6 Alternative C1 – SCE 230-kV Loop-in to Capistrano Substation ...	3-10
	3.2.7 Alternative C2 – SCE 230-kV Loop-in to Capistrano Substation Routing Alternative.....	3-13
	3.2.8 Alternative D – SCE 230-kV Loop In to Reduced-Footprint Substation at Landfill.....	3-13
	3.2.9 Alternative E – New 230-kV Talega–Capistrano Line Operated at 138 kV	3-14
	3.2.10 Alternative F – 230-kV Rancho Mission Viejo Substation	3-14
	3.2.10.1 Work Planned at Rancho Mission Viejo Substation.....	3-16
	3.2.11 Alternative G – New 138-kV San Luis Rey–San Mateo Line and San Luis Rey Substation Expansion	3-16
	3.2.12 Alternative J – SCE 230-kV Loop In to Trabuco Substation	3-16
4.0	Environmental Analysis.....	4-1
4.1	Aesthetics	4.1-1
	4.1.1 Environmental Setting	4.1-1

	4.1.2	Regulatory Setting	4.1-14
	4.1.3	Impact Analysis	4.1-19
	4.1.3.4	Mitigation Measures	4.1-40
4.2		Agriculture and Forestry Resources.....	4.2-1
	4.2.1	Environmental Setting	4.2-1
	4.2.2	Regulatory Setting	4.2-1
	4.2.3	Impact Analysis	4.2-3
	4.2.4	Mitigation Measures	4.2-5
4.3		Air Quality	4.3-1
	4.3.1	Environmental Setting	4.3-1
	4.3.2	Regulatory Setting	4.3-6
	4.3.3	Impact Analysis	4.3-8
	4.3.4	Mitigation Measures	4.3-20
4.4		Biological Resources	4.4-1
	4.4.1	Environmental Setting	4.4-1
	4.4.2	Regulatory Setting	4.4-23
	4.4.3	Impact Analysis	4.4-32
	4.4.4	Mitigation Measures	4.4-50
4.5		Cultural Resources	4.5-1
	4.5.1	Environmental Setting	4.5-2
	4.5.2	Regulatory Setting	4.5-7
	4.5.3	Impact Analysis	4.5-13
	4.5.4	Mitigation Measures	4.5-19
4.6		Geology, Soils, and Mineral Resources.....	4.6-1
	4.6.1	Environmental Setting	4.6-1
	4.6.2	Regulatory Setting	4.6-12
	4.6.3	Impact Analysis	4.6-17
	4.6.4	Mitigation Measures	4.6-24
4.7		Greenhouse Gases	4.7-1
	4.7.1	Environmental Setting	4.7-1
	4.7.2	Regulatory Setting	4.7-5
	4.7.3	Impact Analysis	4.7-9
4.8		Hazards and Hazardous Materials	4.8-1
	4.8.1	Environmental Setting	4.8-1
	4.8.2	Regulatory Setting	4.8-6
	4.8.3	Impact Analysis	4.8-17
	4.8.4	Mitigation Measures	4.8-25
4.9		Hydrology and Water Quality.....	4.9-1
	4.9.1	Environmental Setting	4.9-1
	4.9.2	Regulatory Setting	4.9-7
	4.9.3	Impact Analysis	4.9-12
	4.9.4	Mitigation Measures	4.9-20
4.10		Land Use and Planning.....	4.10-1
	4.10.1	Environmental Setting	4.10-1
	4.10.2	Regulatory Setting	4.10-33
	4.10.3	Impact Analysis	4.10-37
	4.10.4	Mitigation Measures	4.10-43

4.11	Noise and Vibration	4.11-1
4.11.1	Environmental Setting	4.11-1
4.11.2	Regulatory Setting	4.11-7
4.11.3	Impact Analysis	4.11-13
4.11.4	Mitigation Measures	4.11-26
4.12	Population and Housing.....	4.12-1
4.12.1	Setting	4.12-1
4.12.2	Regulatory Setting	4.12-2
4.12.3	Methodology and Significance Criteria	4.12-2
4.12.4	Environmental Impacts and Mitigation Measures	4.12-3
4.13	Public Services and Utilities	4.13-1
4.13.1	Environmental Setting	4.13-1
4.13.2	Regulatory Setting	4.13-4
4.13.3	Impact Analysis	4.13-8
4.13.4	Mitigation Measures	4.13-13
4.14	Recreation	4.14-1
4.14.1	Setting	4.14-1
4.14.2	Regulatory Setting	4.14-3
4.14.3	Impact Analysis	4.14-4
4.14.4	Mitigation Measures	4.14-5
4.15	Transportation and Traffic	4.15-1
4.15.1	Environmental Setting	4.15-1
4.15.2	Regulatory Setting	4.15-9
4.15.3	Impact Analysis	4.15-15
4.15.4	Mitigation Measures	4.15-28
5.0	Comparison of Alternatives.....	5-1
5.1	Comparison Methodology	5-1
5.2	Analysis of Alternatives.....	5-2
5.2.1	Alternative A – No Project	5-5
5.2.2	Alternative B1 – Reconductor Laguna Niguel–Talega 138-kV Line	5-5
5.2.3	Alternative B2 – Use of Existing Transmission Lines (Additional Talega–Capistrano 138-kV Line)	5-8
5.2.4	Alternative B3 – Phased Construction of Alternatives B1 and B2	5-11
5.2.5	Alternative B4 – Rebuild South Orange County 138-kV System.....	5-13
5.2.6	Alternative C1 – SCE 230-kV Loop-in to Capistrano Substation ...	5-15
5.2.7	Alternative C2 – SCE 230-kV Loop-in to Capistrano Substation Routing Alternative.....	5-17
5.2.8	Alternative D – SCE 230-kV Loop-in to Reduced-Footprint Substation at Landfill.....	5-20
5.2.9	Alternative E – New 230-kV Talega–Capistrano Line Operated at 138 kV.....	5-24
5.2.10	Alternative F – 230-kV Rancho Mission Viejo Substation	5-26

	5.2.11 Alternative G – New 138-kV San Luis Rey–San Mateo Line and San Luis Rey Substation Expansion	5-29
	5.2.11.2 Alternative J – SCE 230-kV Loop- in to Trabuco Substation	5-31
5.3	Environmentally Superior Alternative	5-34
6.0	Cumulative Impacts and Other CEQA Considerations.....	6-1
6.1	Cumulative Impacts	6-1
	6.1.1 Methodology	6-1
6.2	Past, Present, and Reasonably Foreseeable Projects.....	6-2
6.3	Cumulative Scenario.....	6-8
	6.3.1 Residential Projects.....	6-8
	6.3.2 Commercial and Retail Developments	6-8
	6.3.3 Infrastructure and Transportation Projects.....	6-8
6.4	Resource Areas	6-9
	6.4.1 Aesthetics	6-9
	6.4.2 Agriculture and Forestry Resources.....	6-13
	6.4.3 Air Quality	6-14
	6.4.4 Biological Resources	6-16
	6.4.5 Cultural Resources	6-17
	6.4.6 Geology, Soils, and Mineral Resources	6-18
	6.4.7 Greenhouse Gas Emissions.....	6-20
	6.4.8 Hazards and Hazardous Materials	6-21
	6.4.9 Hydrology and Water Quality.....	6-24
	6.4.10 Land Use and Planning.....	6-25
	6.4.11 Noise	6-26
	6.4.12 Population and Housing.....	6-29
	6.4.13 Public Services and Utilities	6-30
	6.4.14 Recreation	6-32
	6.4.15 Transportation and Traffic	6-32
6.5	Growth-inducing Impacts	6-35
6.6	Significant and Unavoidable Adverse Impacts.....	6-36
6.7	Significant and Irreversible Environmental Changes	6-37
7.0	List of Preparers.....	7-1
7.1	Lead Agency	7-1
7.2	Project Management and Document Production	7-1
7.3	Persons and Agencies Contacted	7-2
8.0	Mitigation Monitoring and Reporting Plan	8-1
8.1	Minor Project Refinements	8-1
	8.1.1 Minor Project Refinements Request Process.....	8-1
	8.1.2 Requirements for Staff Approval of Minor Refinements	8-2

8.2	Dispute Resolution.....	8-3
8.3	Mitigation, Monitoring, Reporting, and Compliance Program.....	8-3
9.0	References.....	9-1

Appendices

- Appendix A: CEQA Scoping Summary Report
- Appendix B: Alternatives Screening Report
- Appendix C: Existing and Proposed 230-kV, 138-kV, and 69-kV Transmission Lines, Structures, and Areas of Disturbance Map Sheets
- Appendix D: Existing and Proposed 12-kV Distribution Line Map Sheets
- Appendix E: Profile Diagrams of Proposed San Juan Capistrano Substation
- Appendix F: Detailed Construction Equipment Use Tables
- Appendix G: Detailed Construction Schedule
- Appendix H: Electric and Magnetic Field Management Plan
- Appendix I: Project Area Roadways and Traffic Study
- Appendix J: Environmental Data Resources Database Report
- Appendix K: Air Calculation Emission Estimates and Air Quality Local Significant Thresholds
- Appendix L: Biological Resources Assessments and Special Status Species Tables
- Appendix M: Historical Reports
- Appendix N: Noise Assessment Tables
- Appendix O: SDG&E Subregional NCCP/HCP Operational Protocols by Environmental Category
- Appendix P: Public Participation Summary Report
- Appendix Q: Revised Traffic Memorandum and Applicant Draft Traffic Control Plan
- Appendix R: Electrical Engineering Memorandum
- Appendix S: National Register of Historic Places Correspondence and the Capistrano Preservation Alternative
- Appendix T: Spanish Translation of Master Responses A, C, and D

This page intentionally left blank.

Tables

Table 1-1	South Orange County 138-kV System Forecast Peak Loads and Peak Loads by Substation for 2014 through 2024 in Megawatts.....	1-7
Table 1-2	South Orange County 138/12-kV Substation Peak Loads and Percent Capacity Forecasts for 2024.....	1-7
Table 2-1	Existing and Proposed San Juan Capistrano and Talega Transmission Lines.....	2-6
Table 2-2	Existing Capistrano Substation and Proposed San Juan Capistrano Substation Components	2-8
Table 2-3	Proposed Transmission and 12-kV Distribution Line Segments and Lengths ..	2-16
Table 2-4	Existing and Proposed Structure Numbers, Types, and Heights	2-23
Table 2-5	Proposed Pole Diameters	2-27
Table 2-6	Construction Schedule	2-35
Table 2-7	Construction Personnel at the San Juan Capistrano and Talega Substation Worksites	2-38
Table 2-8	Temporary and Permanent Land Disturbance Estimates.....	2-40
Table 2-9	Cut and Fill Estimates.....	2-41
Table 2-10	Access Road Construction	2-50
Table 2-11	Proposed Staging Areas	2-59
Table 2-12	Applicant Proposed Measures.....	2-69
Table 2-13	Permits, Consultations, and Approvals.....	2-75
Table 3-1	Alternatives Considered in the Screening Report.....	3-3
Table 4.3-1	Summary of National and California Ambient Air Quality Standards.....	4.3-3
Table 4.3-2	Pollutant Measurements at Air Quality Monitoring Stations in the Proposed Project Area	4.3-4

Table 4.3-3	Attainment Status in Orange County and San Diego County.....	4.3-5
Table 4.3-4	SCAQMD CEQA Air Quality Significance Thresholds	4.3-9
Table 4.3-5	Localized Significance Thresholds for Zone 21 - Capistrano Valley.....	4.3-11
Table 4.3-6	SDAPCD Screening Level Thresholds	4.3-11
Table 4.3-7	Maximum Daily Emissions, South Coast - Simultaneous Emission Calculations in 2015	4.3-15
Table 4.3-8a	SCAQMD Localized Significance Threshold for Construction of Substations and Transmission Line	4.3-16
Table 4.3-8b	SCAQMD LST for Construction of Distribution Line	4.3-17
Table 4.3-9	Maximum Daily and Annual Emissions in 2015	4.3-18
Table 4.4-1	Summary of Surveys Conducted for the Proposed Project.....	4.4-3
Table 4.4-2	Vegetation Communities and Acreages within the Proposed Project Area ¹	4.4-5
Table 4.4-3	Potentially Jurisdictional Waters in the Proposed Project Area ¹	4.4-10
Table 4.4-4	Sensitive Plant and Wildlife Species and Critical Habitat by Project Component.....	4.4-35
Table 4.4-5	Arroyo Toad and Coastal California Gnatcatcher Critical Habitat Acreages by Project Component.....	4.4-36
Table 4.4-6	Impacts on Sensitive Natural Communities (in acres ¹)	4.4-44
Table 4.5-1	Previously Discovered Cultural Resources within the Surveyed Area.....	4.5-4
Table 4.5-2	Geologic Units and Paleontological Sensitivity within the Project Area	4.5-6
Table 4.6-1	Geologic Units within the Proposed Project Area	4.6-2
Table 4.6-2	Soil Types at the Proposed Project Area.....	4.6-3
Table 4.6-3	Maximum Credible Earthquake and Slip Rate for Active Southern California Faults within 20 Miles of the Proposed Project Area	4.6-5
Table 4.7-1	Global Warming Potential For Greenhouse Gases	4.7-3

Table 4.7-2	Total Greenhouse Gas Emissions from Construction of the Proposed Project	4.7-11
Table 4.7-3	Overall Greenhouse Gas Emissions of the Proposed Project	4.7-13
Table 4.8-1	Lead-based Paint Survey Results.....	4.8-2
Table 4.8-2	Asbestos Containing Material Survey Results.....	4.8-2
Table 4.8-3	Soil Sampling Results	4.8-3
Table 4.8-4	Schools within 0.25 Miles of the Proposed Project	4.8-4
Table 4.8-5	Oil, Gas, and Geothermal Wells within 1,000 feet of the Proposed Project.....	4.8-4
Table 4.9-1	Watersheds and Water Bodies <u>Drainages</u> Spanned by the Proposed Project	4.9-2
Table 4.9-2	Water Bodies in the Vicinity of Proposed Project on the California 303(d) List	4.9-5
Table 4.10-1	General Plan Land Use, Existing Land Use, and Zoning by Proposed Project Component ¹	4.10-1
Table 4.11-1	Typical Noise Levels	4.11-2
Table 4.11-2	Human and Structural Response to Typical Levels of Vibration	4.11-3
Table 4.11-3	Applicant’s Noise Surveys Results.....	4.11-3
Table 4.11-4	Closest Noise Sensitive Receptors to Proposed Project Components	4.11-5
Table 4.11-5	City of San Juan Capistrano Exterior Noise Standards	4.11-8
Table 4.11-6	City of San Juan Capistrano Maximum Levels of Noise Exposure for Residential, Institutional, and Commercial Uses	4.11-8
Table 4.11-7	City of San Clemente Allowable Exterior Noise Limits	4.11-9
Table 4.11-8	City of San Clemente Maximum Levels of Noise Exposure for Residential Uses.....	4.11-9
Table 4.11-9	Maximum Noise Emission Levels from General Construction Equipment .	4.11-10
Table 4.11-10	Estimated Construction Noise Estimates per Project Component.....	4.11-11

Table 4.11-11 ~~Estimated Corona Noise Levels from 230 kV Transmission Lines Segments~~ 4.11-18

Table 4.11-11 Calculated Corona Noise Modeling Results in Wet Weather (dBA, L50) ... 4.11-18

Table 4.11-12 Estimated Combined Transformer Noise Levels at the San Juan Capistrano Substation..... 4.11-19

Table 4.11-13 Construction Hours per Jurisdiction 4.11-20

Table 4.11-14 Reference vibration source levels for project construction equipment..... 4.11-22

Table 4.11-15 Groundborne Vibration Impact General Assessment Criteria 4.11-22

Table 4.12-1 Current and Projected Population in the Proposed Project Area 4.12-1

Table 4.12-2 Housing Units and Projections for the Proposed Project Area 4.12-1

Table 4.13-1 Fire Stations within 2 miles of the Proposed Project 4.13-1

Table 4.13-2 Hospitals in the Proposed Project Area 4.13-2

Table 4.13-3 Status of Active and Permitted Class III Disposal Facilities in Orange County the Vicinity of the Proposed Project 4.13-3

Table 4.14-1 Recreational Facilities in the Vicinity of the Proposed Project 4.14-1

Table 4.15-1 Local Roadways Affected by the Proposed Project..... 4.15-2

Table 4.15-2 OCTA Level of Service Definitions for Uninterrupted Flow Facilities 4.15-4

Table 4.15-3 Existing Average Daily Traffic and Level of Service – Year 2015..... 4.15-4

Table 4.15-4 Bus Routes within the Proposed Project Area 4.15-5

Table 4.15-5 Existing Bikeways and Unpaved Trails within the Proposed Project Area.... 4.15-8

Table 4.15-6 Year 2015 Roadway Segment Operations 4.15-18

Table 5-1 Summary of the Alternatives Analyses and Determinations 5-3

Table 6-1 Past, Present, and Reasonably Foreseeable Future Projects within One Mile of the Proposed Project 6-3

Table 6-2	Summary of the Noisiest Construction Activity for each Project Component..	6-27
Table 6-3	Construction Hours per Jurisdiction	6-27
Table 6-4	Cumulative Street Segment Operations ^a	6-34
Table 8-1	Applicant Proposed Measures and Mitigation Measures for the Proposed Project	8-4

This page intentionally left blank.

Figures

Figure 1-1	Project Vicinity	1-2
Figure 1-2	Existing and Proposed SDG&E South Orange County 138-kV System	1-3
Figure 1-3	South Orange County 138-kV System Recorded Peak Load (2002–2013) in Megawatts	1-6
Figure 2-1	Overview of the Proposed Substation and Transmission Lines.....	2-2
Figure 2-2	Overview of the Proposed 12-kV Distribution Lines	2-3
Figure 2-3	Capistrano Substation Site	2-5
Figure 2-4	Proposed San Juan Capistrano Substation	2-10
Figure 2-5a	Existing and Proposed Transmission Lines	2-28
Figures 2-5b	Existing and Proposed 138-kV and 230-kV Structures / Existing and Proposed 12-kV and 69-kV Structures and Typical Guard Structure	2-29
Figures 2-5c	Existing and Proposed 12-kV and 69-kV Structures and Typical Guard Structure	2-30
Figure 2-6	Proposed Underground Duct Bank Configurations and Splice Vaults	2-32
Figure 2-7	New ROW for the Proposed Project	2-34
Figure 2-78	Hypothetical Construction Schedule and Phasing Based on a May 2015 Start Date	2-36
Figure 2-89	Jack and Bore Trenching	2-55
Figure 3-1	138-kV Reconductoring and Use of Existing Transmission Lines.....	3-8
Figure 3-2	Rebuild South Orange County 138-kV System	3-11
Figure 3-3	SDG&E 230-kV Interconnect with SCE	3-12
Figure 3-4	New 138-kV Transmission Line and Rancho Mission Viejo Alternatives.....	3-15
Figure 3-5	Trabuco Substation Conceptual Site Plan.....	3-17

Figure 4.1-1	Scenic Vistas and Routes in the Proposed Project Area	4.1-6
Figure 4.1-2	Region of Influence and Landscape Units	4.1-7
Figure 4.1-3	Landscape Unit 1 Representative Photos.....	4.1-8
Figure 4.1-4	Landscape Unit 2 Representative Photos.....	4.1-11
Figure 4.1-5	Landscape Unit 3 Representative Photos.....	4.1-13
Figure 4.1-6	Landscape Unit 4 Representative Photos.....	4.1-15
<u>Figure 4.1-13</u>	<u>Existing View and Visual Simulation from Scenic Vista B</u>	4.1-23
<u>Figure 4.1-14</u>	<u>Existing View and Visual Simulation from Scenic Vista A</u>	4.1-25
Figure 4.1-7	Existing View and Computer Rendering from Camino Capistrano	4.1-29
Figure 4.1-8	Existing View and Visual Simulation from Via Priorato	4.1-32
Figure 4.1-9	Existing View and Visual Simulation from San Juan Creek Road.....	4.1-34
Figure 4.1-10	Existing View and Visual Simulation from San Juan Hills High School.....	4.1-35
Figure 4.1-11	Existing View and Visual Simulation from Via Ceramica.....	4.1-37
Figure 4.1-12	Existing View and Visual Simulation from Talega Park.....	4.1-38
Figure 4.2-1	Designated Important Farmland in the Vicinity of the Proposed Project	4.2-6
Figure 4.4-1a	Critical Habitat within the Proposed Project Area.....	4.4-7
Figure 4.4-1b	<u>Critical Habitat within the Proposed Project Area</u>	4.4-8
Figure 4.4-2	Jurisdictional Features within the Proposed Project Area	4.4-9
Figure 4.4-3a	HCPs and NCCPs <u>Preserved Lands</u> within the Proposed Project Area.....	4.4-21
<u>Figure 4.4-3b</u>	<u>Preserved Lands within the Proposed Project Area</u>	4.4-22
Figure 4.6-1	Regional Faults and Earthquake Epicenters	4.6-7
Figure 4.6-2	Landslide Susceptibility in the Proposed Project Area.....	4.6-9

Figure 4.6-3 Liquefaction Susceptibility in the Proposed Project Area 4.6-13

Figure 4.8-1 Fire Hazard Severity Zones 4.8-7

Figure 4.9-1 ~~Groundwater Basins~~ Hydrologic Areas in the Proposed Project Area 4.9-3

Figure 4.9-2 Dam Inundation Areas and Floodplains within the Proposed Project Area 4.9-6

Figure 4.10-1 General Plan Land Use Designations in the Project Component Areas 4.10-5

Figure 4.10-2 Zoning Designations in the Project Component Areas 4.10-19

Figure 4.11-1 Increase in Cumulative Noise Levels Allowed by Criteria (dBA) 4.11-24

Figure 5-1 Representative Photos for Alternatives D, F, and J 5-21

Figure 6-1 Cumulative Projects 6-7

This page intentionally left blank.

Acronyms and Abbreviations

AB	Assembly Bill
AC	alternating current
ACHP	American Council on Historic Preservation
ACSR	aluminum conductor steel reinforced
ACSS	aluminum-clad steel supported
ACSS	aluminum conductor steel supported
af	acre-feet
afy	acre-feet per year
AIA	Airport Influence Area
amsl	above mean sea level
A-P Act	Alquist-Priolo Earthquake Fault Zoning Act
A-P Zone	Alquist-Priolo Earthquake Fault Zone
APM	Applicant Proposed Measure
applicant	San Diego Gas & Electric Company
AQMP	Air Quality Management Plan
AR4	Intergovernmental Panel on Climate Change fourth assessment report
ARB	Architectural Review Board
ASCE	American Society of Civil Engineers
AW	aluminum wire
BACT	best available control technology
BEAP	Base Exterior Architecture Plan
BMP Manual	Best Management Practices Manual for Water Quality Construction
BMP	best management practice
BNSF	Burlington Northern and Santa Fe Railway
BOD	Buildings of Distinction
CAA	Clean Air Act
CAAQS	California Ambient Air Quality Standards
CAISO	California Independent System Operation
CAL FIRE	California Department of Forestry and Fire Protection
Cal/OSHA	Division of Occupational Safety and Health
California Water Code	Porter-Cologne Water Quality Control Act
CalOSHA	California Occupational Health and Safety Administration
Caltrans	California Department of Transportation
CAP	Climate Action Plan
CARB	California Air Resources Board
CCAA	California Clean Air Act
CCR	California Code of Regulation
CDFW	California Department of Fish and Wildlife
CEQA	California Environmental Quality Act
CERCLA	Comprehensive Environmental Response, Compensation, and Liability Act
CESA	California Endangered Species Act
CFM	Coastal Freshwater Marsh
CFR	Code of Federal Regulations

CGS	California Geological Survey
CH ₄	methane
CHRIS	California Historic Resources Information System
CMP	Congestion Management Program
CNDDB	California Natural Diversity Database
CNEL	Community Noise Equivalent Level
CNPS	California Native Plant Society
CNRA	California Natural Resources Agency
CO	carbon monoxide
CO ₂	carbon dioxide
CO ₂ e	carbon dioxide equivalency
CPCN	Certificate of Public Convenience and Necessity
CPUC	California Public Utilities Commission
CRHR	California Register of Historical resources
CSS	Coastal Sage Scrub
CUPA	Certified Unified Program Agency
CWA	Clean Water Act
CY	cubic yards
dB	decibels
dBA	A-weighted decibels
DEIR	Draft Environmental Impact Report
DOC	California Department of Conservation
DOGGR	California Department of Conservation, Division of Oil, Gas, and Geothermal Resources
DTSC	Department of Toxic Substance Control's
EDR	Environmental Data Resources, Inc.
EIR	Environmental Impact Report
EMF	electromagnetic field
EPA	United States Environmental Protection Agency
ESA	Federal Endangered Species Act of 1973
FAA	Federal Aviation Administration
FC	California Department of Fish and Wildlife Candidate Species
FE	Federally Endangered
FEMA	Federal Emergency Management Agency
FHWA	Federal Highway Administration
FIFRA	Federal Insecticide, Fungicide, and Rodenticide
FMMP	Farmland Mapping and Monitoring Program
FP	California Department of Fish and Wildlife Fully Protected Species
FRA	Federal Responsibility Area
FT	Federally Threatened
FTA	Federal Transportation Administration
GCB	gas circuit breaker
GHG	greenhouse gas
GIS	gas-insulated substation
GO	General Order
GWP	global warming potential
H ₂ S	hydrogen sulfide

HCP	Habitat Conservation Plan
HFC	hydrofluorocarbon
HMPB	Hazardous Materials Business Plan
HMWMP	Hazardous Materials and Waste Management Plan
hp	horsepower
HSC	Health and Safety Code
I-5	Interstate 5
ICU	Intersection Capacity Utilization
IEEE	Institute of Electrical and Electronics Engineers
IHCL	Inventory of Historical and Cultural Landmarks
in/sec	inch per second
INRMP	Integrated Natural Resources Management Plan
IPCC	Intergovernmental Panel on Climate Change
IR	Installation Restoration
KOP	key observation points
kV	kilovolt
L ₅₀	sound level exceeded 50 percent of the time
lbs/yr	pounds per year
L _{dn}	Day-Night Level
LDS	Church of Jesus Christ of Latter-day Saints
L _{eq}	Sound Equivalent Level
LID	Low Impact Development
LLG	Linscott Law and Greenspan Engineers
L _{max}	maximum sound level
L _{min}	minimum sound level
LOS	Level of Service
LOSSAN Corridor	San Luis Obispo Rail Corridor
LRA	Local Responsibility Area
LST	Localized Significance Threshold
LU	Landscape Unit
Marine Corps	United States Marine Corps
MBTA	Migratory Bird Treaty Act
MCAS	Marine Corps Air Station
MCB	Marine Corps Base
mg/L	milligrams per liter
MM	Mitigation Measure
MMCRP	Mitigation Monitoring, Compliance, and Reporting Program
MPAH	Master Plan of Arterial Highways
mph	miles per hour
MS4	Municipal Separate Storm Sewer System
MT	metric tons
MTCO ₂ e	metric tons of carbon dioxide equivalency
MVA	megavolt ampere
MVAR	mega-volt amperes reactive
MW	megawatt
MWDOC	Municipal Water District of Orange County
N ₂ O	nitrous oxide

NAAQS	National Ambient Air Quality Standards
NAHC	Native American Heritage Commission
NCCP	Natural Community Conservation Plan
NEMA	National Electrical Manufacturers Association
NHPA	National Historic Preservation Act
NO ₂	nitrogen dioxide
NOP	Notice of Preparation
NO _x	oxides of nitrogen
NOX	Oxides of Nitrogen
NPDES	National Pollutant Discharge Elimination System
NRHP	National Register of Historic Places
NTSB	National Transportation Safety Board
OCFA	Orange County Fire Authority
OCTA	Orange County Transportation Authority
OSHA	Occupational Safety and Health Administration
PCE	Passenger Car Equivalent
PDL	Prima Deschecha Landfill
PEA	Proponent's Environmental Assessment
PFC	perfluorocarbon
PGA	peak ground acceleration
PM	particulate matter
PM ₁₀	Particulate matter less than or equal to 10 microns in diameter
PM _{2.5}	Particulate matter less than or equal to 2.5 microns in diameter
PPV	peak particle velocity
PRC	Public Resources Code
proposed project	South Orange County Reliability Enhancement Project
PVC	polyvinyl chloride
RAQS	Regional Air Quality Strategy
RCRA	Resource Conservation and Recovery Act of 1976
ROG	reactive organic gas
ROI	Region of Influence
ROW	right-of-way
RTC	Regional Clean Air Incentive Market Trading Credits
RWQCB	Regional Water Quality Control Board
SARA	Superfund Amendment and Reauthorization Act
SCAB	South Coast Air Basin
SCAG	Southern California Association of Governments
SCAQMD	South Coast Air Quality Management District
SCCIC	South Central Coastal Information Center
SCE	Southern California Edison
SCIC	South Coastal Information Center
SCRRA	Southern California Regional Rail Authority
SDAB	San Diego County Air Basin
SDAPCD	San Diego Air Pollution Control District
SDG&E	San Diego Gas and Electric Company
SDRWQCB	San Diego Regional Water Quality Control Board
SE	State Endangered

Serra Park	Junipero Serra Park
SF ₆	sulfur hexafluoride
SIP	state implementation plan
SMARA	Surface Mining and Reclamation Act
SO ₂	sulfur dioxide
SOC WMA	South Orange County Watershed Management Area
SPCC	spill prevention, control, and countermeasures
SR	State Route
SR-74	State Route 74
SRA	State Responsibility Area
SSC	California Department of Fish and Wildlife Species of Special Concern
ST	State Threatened
STATCOM	Static Synchronous Compensator
State	State of California
SWPPP	Storm Water Pollution Prevention Plan
SWRCB	State Water Resources Control Board
SWS	Southern Willow Scrub
TAC	toxic air contaminant
TDS	total dissolved solids
TIA	Traffic Impact Analysis
TRC	TRC Solutions, Inc.
U.S. EPA	United States Environmental Protection Agency
U.S.C.	United States Code
UNFCCC	United Nations Framework Convention on Climate Change
USACE	U.S. Army Corps of Engineers
USEPA	United States Environmental Protection Agency
USFWS	United States Fish and Wildlife Service
USGS	United States Geological Survey
V/C	volume-to-capacity
VAR	volt amperes reactive
VdB	vibration velocity levels measured in inches per second or in decibels
VOC	volatile organic compound
WECC	Western Electricity Coordinating Council

This page intentionally left blank.