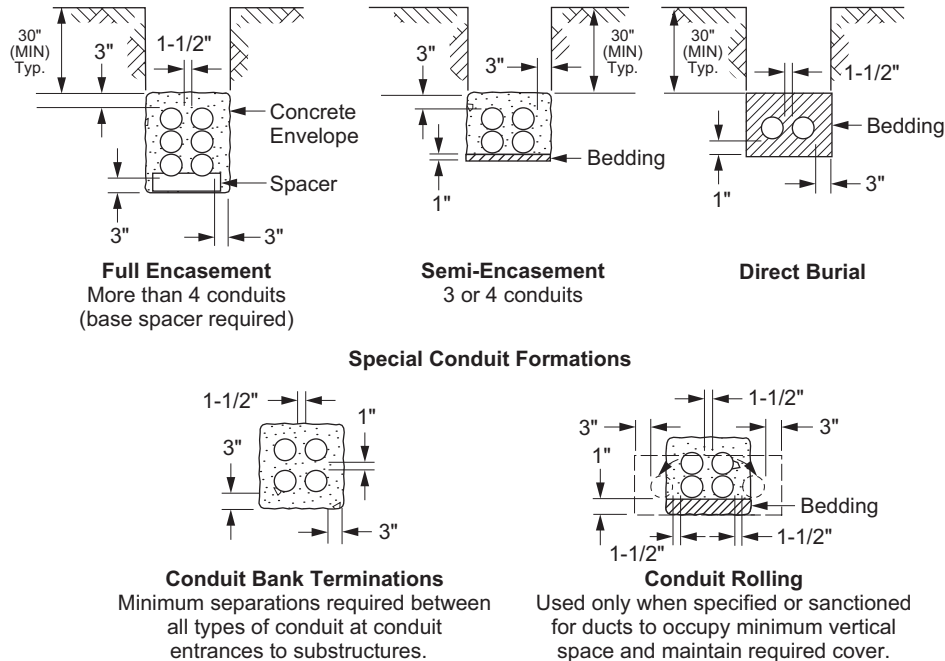


CD 120 Conduit Bank Requirements

Scope CD 120.1 Conduit Bank Requirements

Figure CD 120–1: Typical Conduit Bank Sections (Mainline and Commercial/Industrial)



Note(s):

1. Spacing and concrete coverage as shown is minimum.
2. Spacers, when required, will be as recommended by the conduit manufacturer and approved by the company and will be placed at the intervals shown in [Table CD 120–1 \(Sheet 1\)](#). Vertical spacers and base spacers will be manufactured from rigid noncompressable-type materials. Use temporary means to maintain horizontal conduit spacing at these intervals until backfill bedding or encasement is placed.

Table CD 120–1: Horizontal Conduit Spacing Intervals

Conduit Size	2"	3"	3-1/2"	4"	5"	6"
Spacing with Encasement	10'	10'		10'		
Spacing with Nonencasement	10'	8'		6'		

3. Base spacers are required on all banks of more than four conduits.
4. The conduit will be of an approved make and manufacture as set forth in standards [CD 115](#).
5. Types:
 - a. "EB" (Type I) for encased and semi-cased installations
 - b. "DB" (Type II) for direct burial
 - c. "Sch. 40" Rigid PVC for inside bore casings
6. For general conduit bank, concrete, and trenching requirements, see [CD 100](#).
7. Install bare copper neutral wire only when specified on working drawing. For mainline applications (including 4-wire taplines) when the neutral is present on an overhead structure that feeds a primary riser, the neutral shall be continuous to the first underground structure. A bare copper neutral wire, as specified on the working drawing, shall be placed, and fully encased in concrete, at the lower region of the duct bank, preferably in-between conduits.
8. Concrete encasement will be kept uniform. Excessive amounts of concrete will be avoided.
9. Bedding will be in accordance with [CD 100](#).

Approved by:

RR

Conduit Bank Requirements

CD 120

Sheet 1 of 3

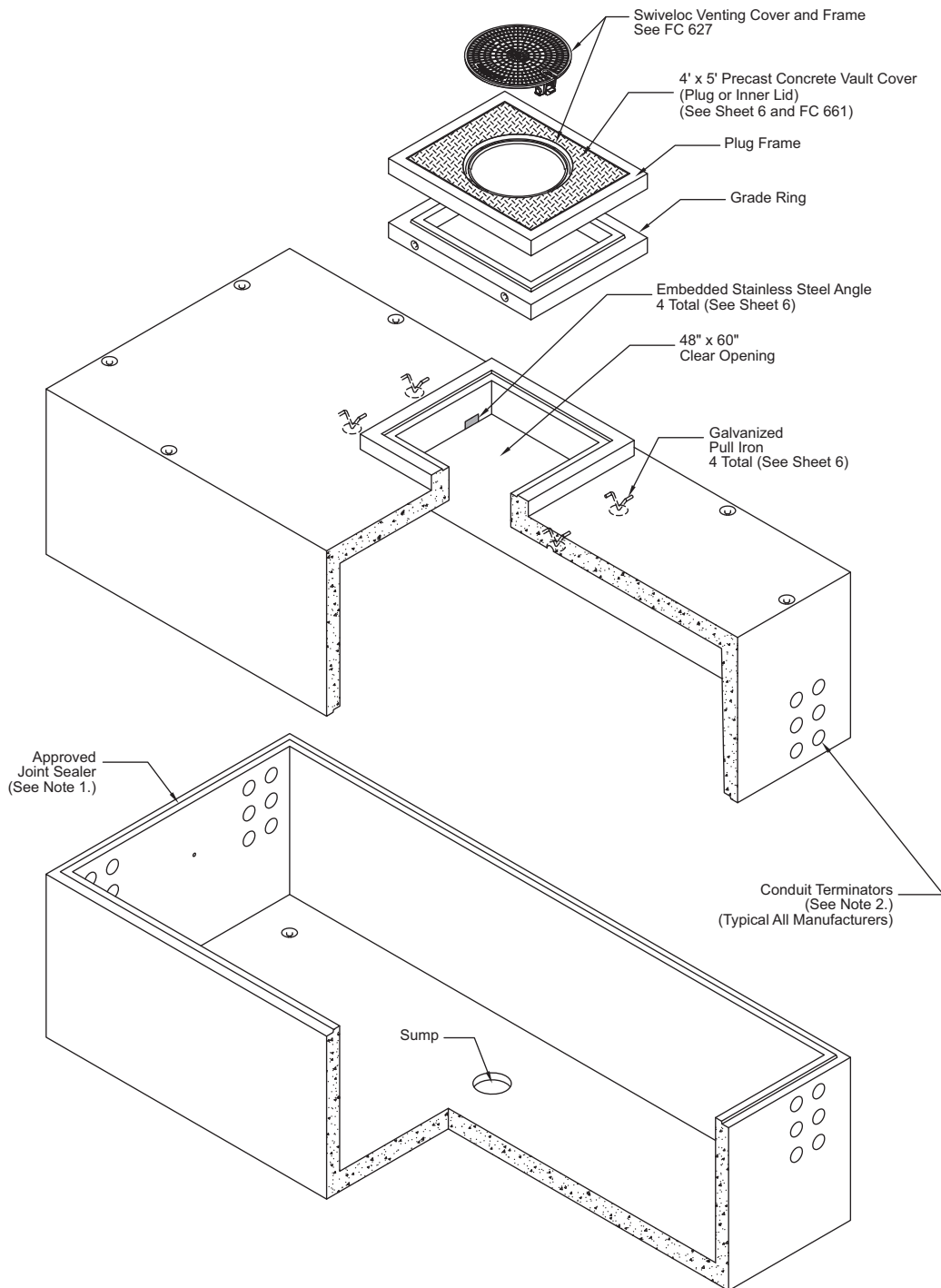
Effective Date:
04-30-2021

What's Changed? A minimum buried depth of 30-inches has been added to Figure CD 120-1 for clarity.

UGS

Scope VA 410.3 Precast Tub-Type Vaults with Cover Restraints

Figure VA 410-3: Precast Tub-Type Vaults with Cover Restraints



- Note(s):**
1. See [GI 030](#)
 2. See [CD 142](#)

Approved by: <i>RR</i>	Precast Vertical Section Vault — 8' Wide x Variable Lengths (14' Minimum) x 9'-4" or 9'-6" High	VA 410
Effective Date: 04-24-2020	What's Changed?	Sheet 5 of 8
		UGS