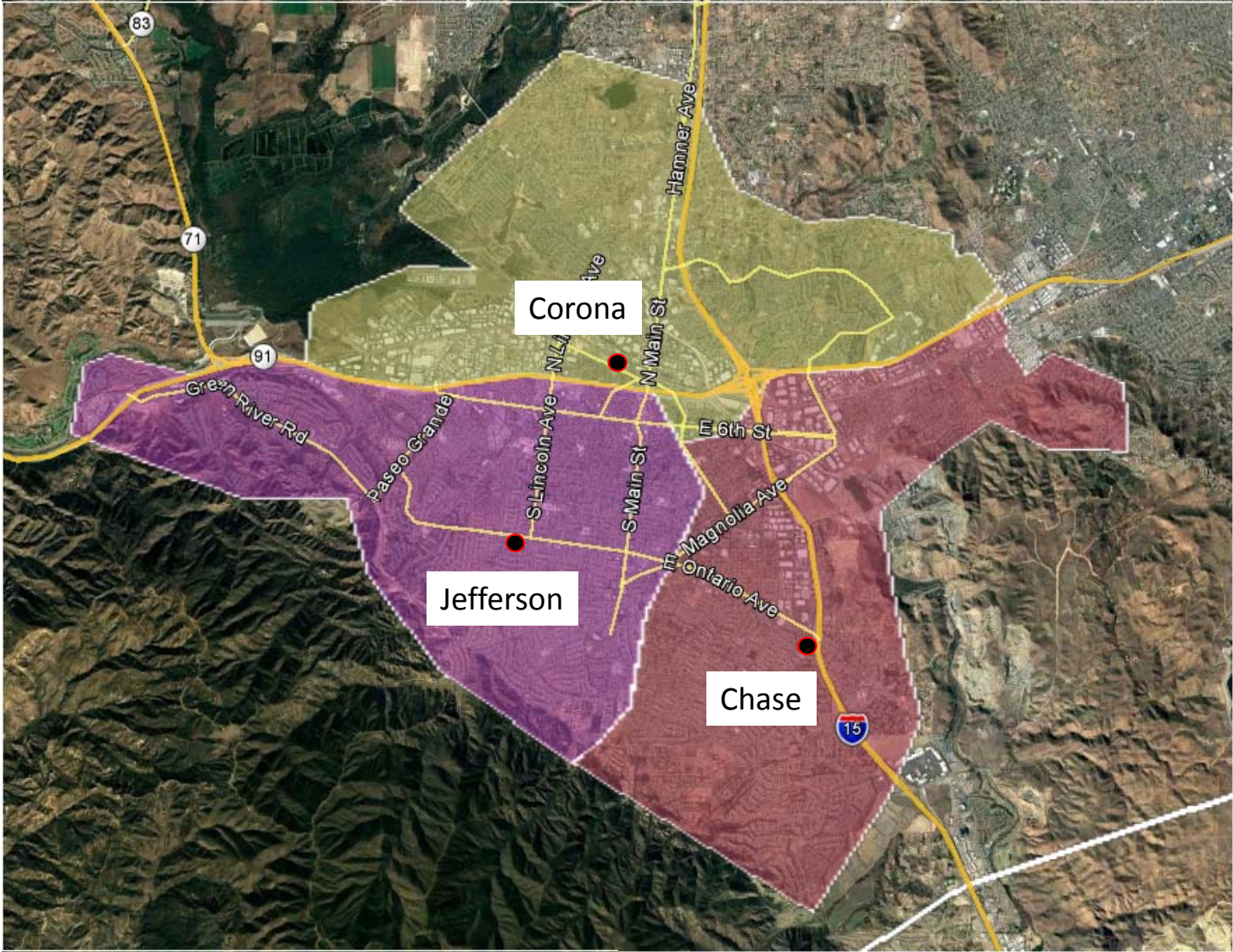


Southern California Edison
Circle City and Mira Loma-Jefferson Project A.15-12-007
DATA REQUEST SET A1512007-ED-SCE-18 - Question 1

Areas of coverage of the existing three substations in the electrical needs area of the project.



Southern California Edison
Circle City and Mira Loma-Jefferson Project A.15-12-007
DATA REQUEST SET A1512007-ED-SCE-18 - Question 1

Areas of coverage (conceptual) of the existing three substations and the proposed Circle City Substation (at future full build-out) in the electrical needs area of the project.

