



A  Sempra Energy utility®

## ***TL 6975 San Marcos – Escondido Project***



**County of San  
Diego**

**April, 2019**

# TL 6975 San Marcos – Escondido Project



A  Semptra Energy utility®

## Background



- SDG&E has proposed a new 69 kilovolt (kV) power line between the existing San Marcos and Escondido substations to increase electric system reliability by decreasing congestion on the existing power lines
- The need for this project was reviewed and approved by the California Independent System Operator (CAISO)
- Given the load growth of the San Marcos and Escondido areas and surrounding communities, the load pocket in this area has created an increased demand that continues to strain the existing infrastructure
- The project has been proposed in order to alleviate existing North American Electric Reliability (NERC) violations, service projected load growths, and improve reliability in the San Marcos/Escondido area

# ***TL 6975 San Marcos – Escondido Project***

- Electrical load planning studies show that the system has vulnerabilities under contingency conditions that do not meet the required standards set forth by the North American Reliability Corporation (NERC)
- The newly proposed 69 kV power line between the existing San Marcos and Escondido substations will eliminate these vulnerabilities, and replace aging infrastructure with state of the art equipment and fire resistant steel poles
- The project calls for the re-build of an existing line along San Marcos Blvd in Segment 1, the installation of new facilities adjacent to an existing 138 kV line in Segment 2, and the replacement of conductor on existing structures and re-energization of existing conductors on existing structures in Segment 3
- Project components within SD County include:
  - Segment 1: Approximately 0.25 miles
  - Segment 2: Approximately 0.65 miles
  - Segment 3: Approximately 5 miles

# San Diego's Energy Landscape | Yesterday



San Onofre Nuclear  
Generation Station

Electric Transmission Path

Encina Power  
Station



## Conventional Sources



Legacy Natural Gas



Legacy Natural Gas  
Peaker



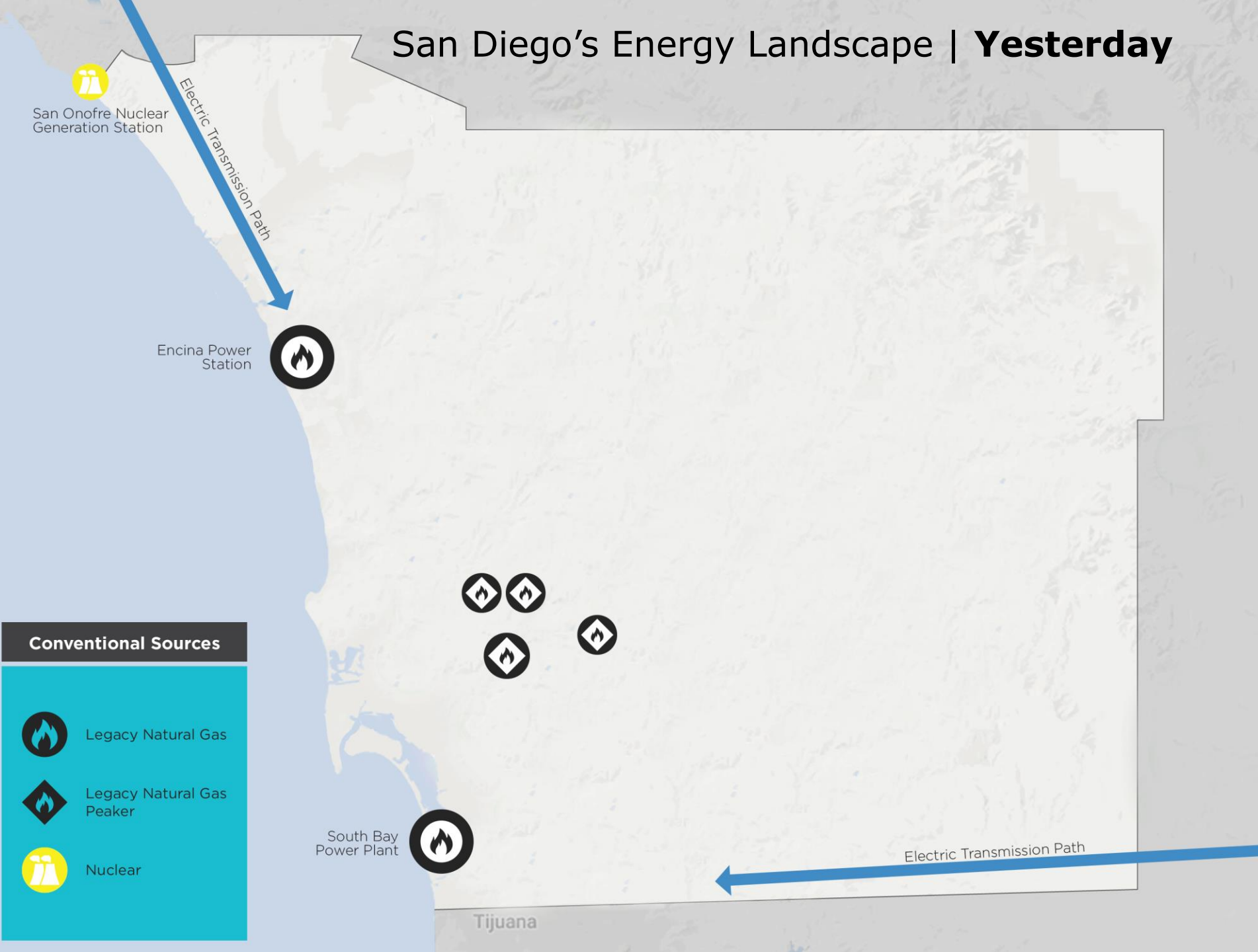
Nuclear

South Bay  
Power Plant



Tijuana

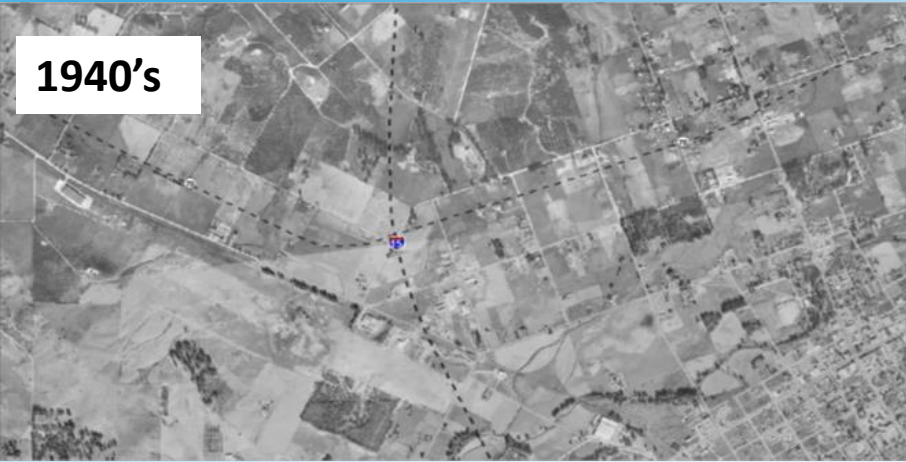
Electric Transmission Path





# Escondido: I-15 and SR-78

1940's



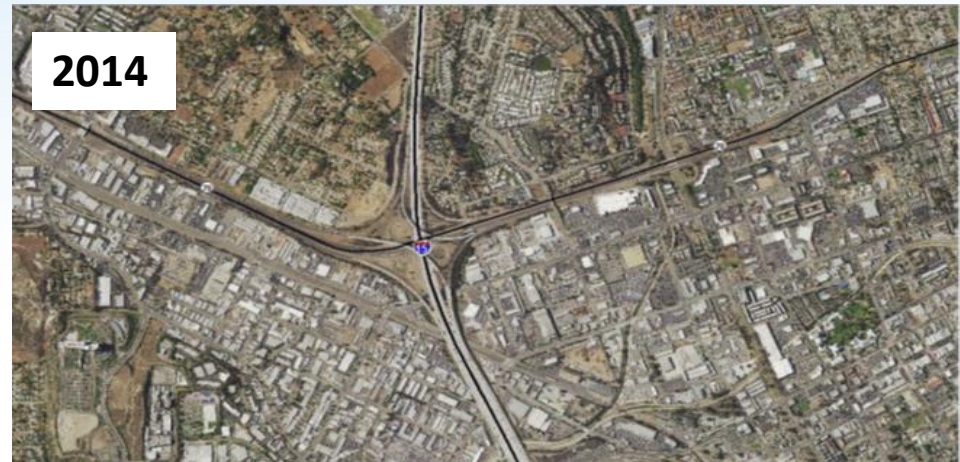
1960's



1990's



2014



# Reliable: San Diego is Growing and Our Energy Needs Are Evolving



A Sempra Energy utility®

POPULATION SIZE

289,348



1,033,011



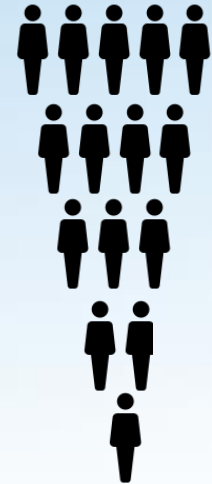
2,489,016



3,317,749



4,384,867



1940s

1960s

1990s

2016

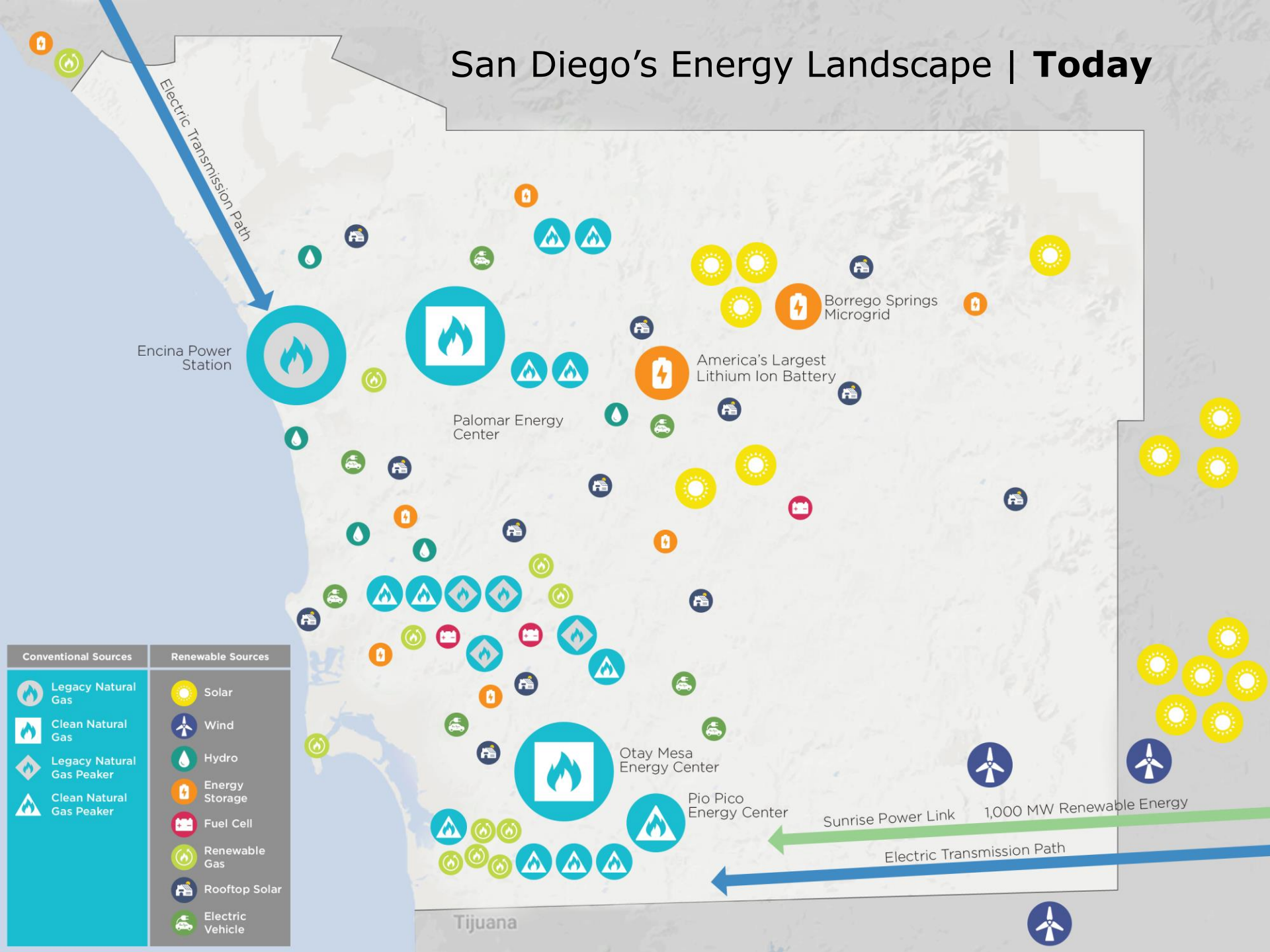
2050

ENERGY USAGE





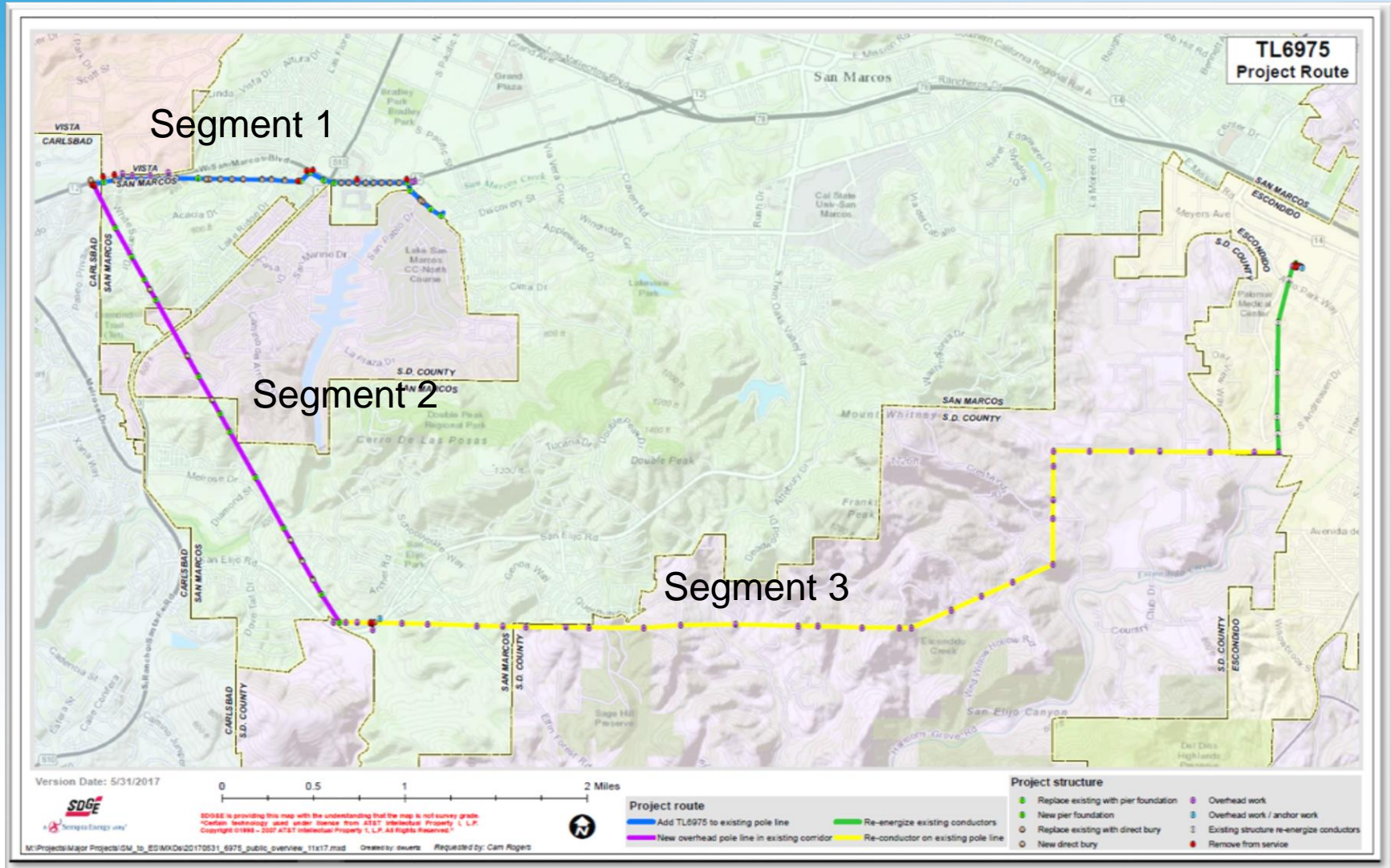
# San Diego's Energy Landscape | **Today**



# TL 6975 San Marcos – Escondido Project



A Sempra Energy utility®





# ***TL 6975 San Marcos – Escondido Project***

## **Routing and Siting Considerations:**

- Encourage the use of existing rights-of-way for electric system upgrades and expansion projects
- Utilize existing facilities such as structures, access roads and work areas where feasible
- Minimize environmental impacts
- No new land acquisitions
- Reliably and economically meet forecasted load growth within SDG&E's service territory
- Ensure that SDG&E's electric system continues to meet NERC, Western Electricity Coordinating Council (WECC) and CAISO reliability criteria, while promoting California's renewable energy integration policy goals

# ***TL 6975 San Marcos – Escondido Project***

## **Anticipated Project Schedule:**

- Project Permit to Construct (PTC) application filed with the California Public Utilities Commission (CPUC) in November, 2017
  - On April 1<sup>st</sup> 2019, the CPUC issued a draft environmental (CEQA) document (Initial Study/Mitigated Negative Declaration or IS/MND) for the project, which is currently in circulation for public review and comment.
  - Typically, CPUC includes a 30-day public comment for an IS/MND, however they have extended the public comment period to 60-days for the TL 6975 project. The period extends from April 1<sup>st</sup> through May 30<sup>th</sup> 2019
  - SDG&E anticipates, based on the current project schedule, that the CPUC will issue a Notice to Proceed (NTP) for the project in the first or second quarter of 2020
  - One year construction schedule anticipated from Q1 or Q2 of 2020 through Q1 or Q2 of 2021
  - Helicopters will likely be utilized for construction and support activities, mainly in Segment 2
  - It is important to note that construction activities often occur intermittently throughout the project area and are often not completed concurrently

# ***TL 6975 San Marcos – Escondido Project***

## Opportunity for Public input:

- The CPUC extended the public comment period from 30 days to 60 days.
- During the 60-day public comment period on the Draft CEQA document, which extends from April 1<sup>st</sup> through May 30<sup>th</sup>, the CPUC will accept public comments regarding the project
- The CPUC will host a local public open house and public presentation on the project during the comment period:
  - Tuesday April 30<sup>th</sup>, 1-3 p.m. at the San Elijo Recreation Center
  - Tuesday April 30<sup>th</sup>, 6-8 p.m. at the San Marcos Community Center
- CPUC Project website:  
<http://www.cpuc.ca.gov/environment/info/esa/TL6975/index.html>



## Questions?

Claudia Valenzuela  
cvalenzuela@semprautilities.com

Rob Fletcher  
rfletcher@semprautilities.com

TL 6975 Project Information Line  
1-844-765-6388