

July 26, 2021

Mr. John Forsythe, AICP  
Project Manager, Energy Division  
California Public Utilities Commission  
300 Capital Mall, 5<sup>th</sup> Floor  
Sacramento, CA 95814

Subject: Humboldt Bay- Humboldt #1 60kV Reconductoring Project  
Notice to Proceed Request #1 for Vegetation Management

Dear Mr. Forsythe:

The California Public Utilities Commission (CPUC) approved the Final Mitigated Negative Declaration (MND) for the Humboldt Bay-Humboldt #1 60 kV Reconductoring Project (Project) and approved the Project in a decision ([A.19-02-004](#)) issued on November 23, 2020. The decision grants PG&E a Permit to Construct (PTC) the Project, and approves the Project conditionally with implementation of avoidance and mitigation measures established in the Mitigation Monitoring Reporting Compliance Program (MMRCP).

PG&E is formally requesting a Notice to Proceed (NTP #1) to complete vegetation removal in advance of construction. Specifically, PG&E proposes to remove trees and brush outside of the 2021 nesting season for birds to reduce the risk of birds nesting in the construction sites next year. The following information is provided to establish PG&E's compliance with the MMRP and resource agency permit requirements:

- 1) Proposed Work Locations for NTP #1<sup>1</sup> (Attachment A – Figures)
- 2) Project Schedule;
- 3) MMRCP & permitting requirements table of compliance and status (Attachment B)
- 4) Preconstruction Plans (Spill Prevention and Fire Prevention Plans) (Attachment C)

As part of NTP #1, PG&E is also requesting a minor expansion of the work areas at TSP 1a and pole 77, and overland access along the right-of-way between poles 57 and 58, as described in item 5 below. The proposed change at pole 77 would also include installation of a new stub

---

<sup>1</sup> Note that NTP #1 includes vegetation removal work, which is not required within the entire Project area. Accordingly, the 'proposed work locations' for NTP #1 include a subset of work areas approved by the CPUC in the Permit to Construct for the Project.

pole in response to a landowner request, which will be included as part of the second NTP request anticipated in the Spring 2022 (NTP #2).

**1. Location and Activities Included in NTP 1 Request:**

Work under NTP #1 will include:

- Removal of trees and brush within approved work areas (see work location figures in Attachment A).

Project work activities other than removal of trees and brush will be requested under a separate NTP request, anticipated for Spring of 2022. All proposed work locations associated with NTP #1 are identified in the figures included as Attachment A.

**2. Project Schedule**

PG&E would commence the vegetation management work on or after September 1, 2021, outside of the nesting bird season (February – August) and the work will take approximately 6 weeks to complete. Any vegetation management work within wetland areas will be completed prior to October 15, 2021.

**3. MMRCP & Permitting Requirements**

The MMRCP identifies two types of requirements: (1) those that must be completed prior to the start of any construction activities; and (2) those that must be implemented prior to the construction of activities at each location. See the attached MMRCP Table (Attachment B) which identifies all MMRCP measures and any applicable regulatory agency conditions along with status of compliance. Tables 1 through 3 below provides the status of the measures. As indicated, the MMRCP requires submittal of a Spill Prevention Control and Response Plan and a Fire Prevention Plan (FPP) prior to construction. These plans are included as Attachment C to this package.

Table 1: MMRCP Preconstruction Submittals

Measure	Compliance Action/Submittal	Status
APM WF-3	Submit at Construction Fire Prevention Plan to the CPUC for review at least 30 days prior to construction.	Attachment C

Re: Humboldt Bay- Humboldt #1 60kV Reconductoring Project NTP Request #1  
 July 26, 2021

Measure	Compliance Action/Submittal	Status
CDP Special Condition #2	Provide to the Executive Director copies of all other local, state, and federal permits and authorizations required to perform project-related work, or evidence that no permits are required.	Completed 7/20/21 (the PTC, 401, and 404 have been submitted to CCC).
CDP Special Condition #3	Prior to the commencement of project activities, the Permittee shall submit a project-specific Spill Prevention and Response Plan to the Executive Director for review and approval.	Attachment C

Table 2: MMRCP Construction Requirements

Measure	Compliance Action
APM AQ-1	Fugitive dust measures: will limit vehicle speed on any unpaved road to not exceed 15 miles per hour.
MM AQ-1	Supplemental Best Management Practices: will implement requirements to limit idling time, and maintain and properly tune equipment throughout construction at all locations. Posting of publicly visible sign with contact at PG&E regarding dust complaints will occur at this time as no ground-disturbing activities will occur during NTP #1.
APM BIO-1	Worker Environmental Awareness Training on biological resources: all crews conducting vegetation removal will receive training.
APM BIO-2	General Resource Protection Measures: will be implemented throughout the Project.
APM BIO-3	Preconstruction surveys: a qualified biologist will conduct surveys in areas identified in the BRTR as having habitat for special-status species and sensitive biological resource areas within 7 days of vegetation management activities.
APM BIO-4	Identification and marking of sensitive Biological Resource Areas: will be clearly marked in the field and on project maps.
APM BIO-5	Biological Monitor On-Site during Construction Activities in Sensitive Biological Resource Areas: a qualified biologist will be onsite during ground-disturbing construction activities in sensitive biological resource areas identified in APM BIO-4 above unless the area has been protected by barrier fencing.
APM BIO-7	Flag or otherwise mark all special-status plant populations for avoidance as feasible, and protection measures for Lyngbe's sedge: vegetation removal is not proposed in locations of mapped populations of Lyngbe's sedge. Should special-status plant species be identified during pre-construction surveys, populations will be flagged for avoidance as feasible.

Re: Humboldt Bay- Humboldt #1 60kV Reconductoring Project NTP Request #1

July 26, 2021

Measure	Compliance Action
APM BIO-8	Special-Status Amphibian and Reptile Impact Avoidance and Protection: NTP #1 work is not scheduled for the rainy season no will excavation work occur. Workers will be instructed to check underneath vehicles prior to moving.
APM BIO-9	General Protection Measures for Wetlands and Other Waters will be implemented.
MM BIO -1	Pre-construction Bat Survey: a qualified biologist will conduct a survey for special-status bat habitat in advance of tree removal, and the specified tree removal procedures will be implemented if potential roosting habitat or active bat roosts are found in trees to be removed.
APM CUL-1	Workers Environmental Awareness Training on archeological resources: all crews conducting vegetation removal will receive training.
APM PALEO-2	Workers Environmental Awareness Training on paleontological resources: all crews conducting vegetation removal will receive training.
APM GHG-1	GHG minimization measures will be implemented throughout the project.
APM HAZ-1	Hazardous Substance Control and Emergency Response: implemented throughout construction at all locations.
APM HAZ-2	Hazardous Substance Control and Emergency Response: included in environmental awareness training.
APM HAZ-3	Fire Risk Management: included in environmental awareness training and implemented throughout construction at all locations.
APM WQ-2	Workers Environmental Awareness Training on water quality: all crews conducting vegetation removal will receive training that will address spill response.
APM NOI-1	Workers will employ specified noise-reducing construction practices.
MM NOI-1a	Adherence to City of Eureka Construction Hour Restrictions. Construction activities within the City of Eureka shall be restricted to the daytime hours between 7:00 a.m. and 7:00 p.m., except as allowed pursuant to Mitigation Measure NOI-1b.
APM REC-1	Coordination and signage: PG&E will coordinate with Redwood Fields Ballpark, Redwood Acres Fairgrounds, and McKay Community Forest and signage notifying of construction activities will be posted at these recreational facilities at least one week in advance of construction.
APM TT-1	Temporary Traffic Controls: an encroachment permit will be obtained should one be needed to complete vegetation removal as determined by the vegetation crew prior to commencement of work.
APM WF-1	Smoking and Fire Rules: will be implemented during NTP #1 activities.
APM WF-2	Vegetation removal crews will carry Emergency Fire Suppression Equipment.

Re: Humboldt Bay- Humboldt #1 60kV Reconductoring Project NTP Request #1  
 July 26, 2021

Table 3: MMRCP Measures NOT applicable to NTP 1

<b>Measure</b>	<b>Explanation</b>
APM AE-1	Nighttime lighting to minimize potential visual impacts of construction activity: no nighttime construction activities will occur.
APM AE-2	Construction Cleanup. No construction debris will be created during vegetation removal.
APM AE-3	Use of Galvanized Finish on LDSs, TSPs, and LSTs: no installation activities will occur.
APM AE-4	Design and operation of staging areas to minimize potential visual impacts: Vegetation crews will deploy directly to work locations; staging areas not required.
APM BIO-6	Nesting Bird Impact Avoidance and Protection: vegetation management activities under NTP #1 have specifically been scheduled to avoid nesting bird season.
APM BIO-10	Restore Temporarily Impacted Wetlands and Other Waters: No excavation will occur under NTP #1. Any areas temporarily disturbed as a result of vegetation removal activities will be restored in accordance with NWP 57 and the CDP following completion of construction.
APM BIO-11	Compensate for Permanent Impacts on Wetlands and Other Waters in Accordance with Project Permits: no permanent impacts will occur during NTP 1 activities.
APM BIO-12	Minimize Impact to Marbled Murrelet: no helicopter work will occur during NTP 1 activities.
MM BIO-2	Habitat Restoration Plan: will be implement at the conclusion of construction.
APM CUL-2	Flag and Avoid Resources (Spiegelberg Homestead Archaeological Deposit): no vegetation removal activities or associated traffic will occur near this resource. No need to flag for NTP 1.
APM CUL-3	Unanticipated discovery protocols; no ground-disturbing activities will occur.
MM CUL-1	Unanticipated discovery protocols; no ground-disturbing activities will occur.
APM GEO-1	Measures for construction in soft and loose soils; no ground disturbing activities will.
APM GEO-2	Measures for reduction of Slope Instability during Construction; no ground disturbing activities will occur.
APM PALEO-1	Unanticipated discovery protocols; no ground-disturbing activities will occur.
APM WQ-1	Storm Water Pollution and Prevention Plan: no grading will occur as part of NTP 1. SWPPP not required for NTP 1.
APM NOI-2	Notify Residents of Nighttime Construction; no nighttime construction will occur.
APM NOI-3	Notify Sensitive Receptors of Helicopter Use: no helicopter use during NTP 1 activities.
MM NOI-1b	Nighttime Construction: no nighttime work will occur during NTP 1 activities.

Measure	Explanation
MM NOI-1c	Construction Noise Management: not applicable to vegetation removal activities under NTP #1.
APM TT-2	Air Traffic Control: no helicopters will be used for NTP 1 activities.
APM TT-3	Coordination Road Closures with Emergency Service Providers and School Districts: no road or lane closures will occur during NTP 1 activities.

**4. Preconstruction Plans**

Two preconstruction plans are required for NTP #1:

- i. APM WF-3 requires submission of a Construction Fire Prevention Plan to the CPUC for review and approval at least 30 days prior to construction. This plan is included in Attachment C.
- ii. Special Condition #3 of the Coastal Development Permit requires submission of a project-specific Spill Prevention and Response Plan to the Executive Director for review and approval. PG&E submitted this plan, included in Attachment C, to the Coastal Commission on July 22, 2021.

**5. Expansion of Workspace at TSP 1a and Pole 77**

PG&E has identified two locations where the approved workspace needs to be expanded as described below.

- i. During final engineering and design, it was identified that TSP 1a needs to shift southward by approximately 7 feet and that there is insufficient workspace on the south and east sides to install the TSP. The expanded workspace is depicted on Figure 1 in Attachment A, and is approximately 875 square feet (0.02 acre) in size of which approximately 200 square feet is within 1-parameter wetland. The expanded work area is within the existing survey area for biological and cultural resources and abuts the eastern boundary of the pull site by Humboldt Bay Substation (pull sites are not shown on the NTP #1 workspace figure). Expansion of the workspace will not result in impacts beyond those assessed in the Initial Study/Mitigated Negative Declaration. A willow thicket with stems up to 12-inch diameter at breast height (DBH) is present within the expanded work area and would be removed as part of vegetation removal activities in NTP #1.
- ii. At pole 77, the landowner has requested that the guy wire for the pole be moved as it prevents access to part of his property. The landowner was going to pay PG&E to remove the guy wire and anchor; however, PG&E has proposed to the landowner that the guy wire can be removed and replaced with a stub pole as part of the

Re: Humboldt Bay- Humboldt #1 60kV Reconductoring Project NTP Request #1  
July 26, 2021

reconductoring project at no cost to the landowner. The stub pole would be located directly south of pole 77, within the existing survey area for cultural and biological resources. Expansion of this workspace to install the stub pole will require removal of a clump of 5 redwood stems, measuring 21, 27, 27, 32, and 41 inches DBH. Beyond removal of these redwoods, the proposed workspace expansion and stub pole installation would not result in impacts beyond those assessed in the Initial Study/Mitigated Negative Declaration.

**6. Overland Access Between Poles 57 and 58**

Poles 57 and 58 are located immediately west of the intersection of Oak Street and D Street. Pole 58 is adjacent to and accessible from a paved driveway that serves three homes. Pole 57 is 275 feet west of pole 58. Access to pole 57 is identified as being by helicopter; however, PG&E construction has determined that they would like overland access to the pole by traveling overland along the right-of-way. As such, PG&E requests approval of overland access between the two poles and to clear (masticate) vegetation at that location (see Sheet 6 of Attachment A). The right-of-way between poles 57 and 58 is within the existing survey area for biological and cultural resources and would not result in impacts beyond those assessed in the Initial Study/Mitigated Negative Declaration.

Sincerely,

Erin Rice  
Senior Planner

cc: Cory Barringhaus, Environmental Science Associates  
Even Holmboe, Environmental Science Associates  
Jillian Blanchard, Attorney at Law  
Janet Liver, ERM

Attachments: A - Proposed Work Locations  
B - HBH MMCRP Tracking Table (NTP #1)  
C - Fire Prevention Plan and Spill Prevention Control and Response Plan

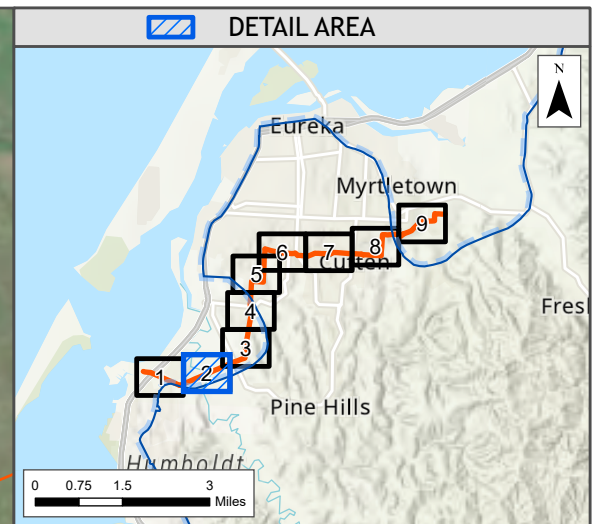
## Attachment A – Proposed Work Locations



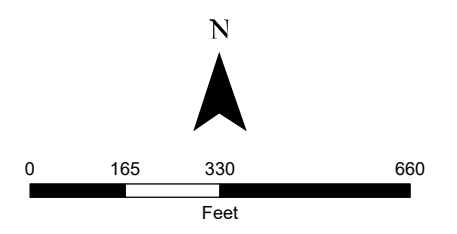


DRAWN BY: Gordon,LI

FILE: C:\Users\gordon.1\Documents\ERM\PG&E\_VM - Documents\GIS\MISC\PROJECTS\2\_HBH Project\appx\Figure 1 Work Areas Map.aprx, REVISED: 07/26/2021, SCALE: 1:4,000 when printed at 11x17



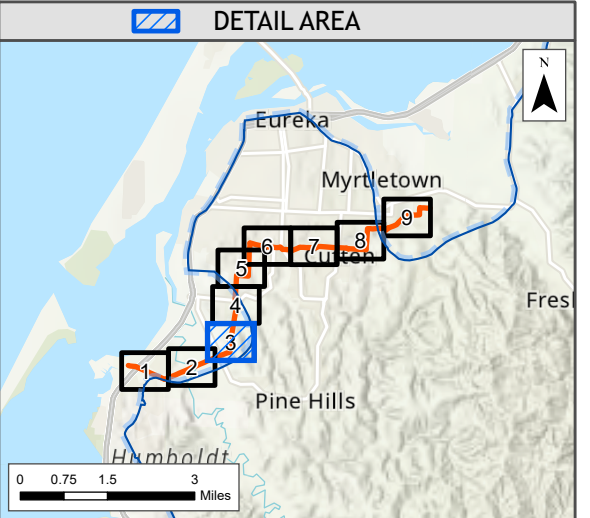
- Sheet Boundary
- Coastal Zone
- Structures and Poles
- Humboldt Bay to Humboldt #1 60kV Power Line



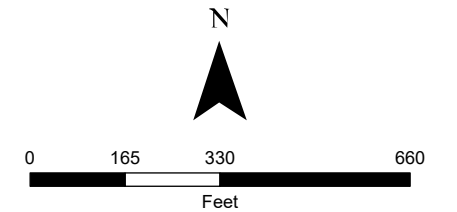
**Figure 1**  
**NTP #1 Work Areas Map**

Sheet 2 of 9

PG&E Humboldt Bay-Humboldt #1 60kV  
Reconducting Veg Scope 2021



- Sheet Boundary
  - Coastal Zone
  - Structures and Poles
  - Humboldt Bay to Humboldt #1 60kV Power Line
  - NTP #1 Work Areas
- Access Route
- Temporary Overland Route (clear/masticate brush)

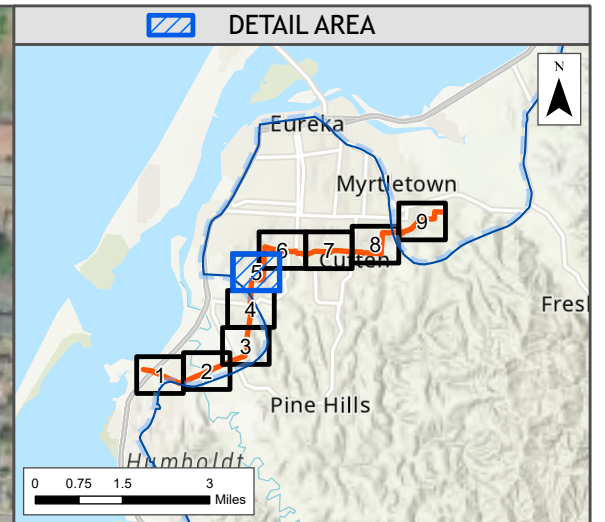
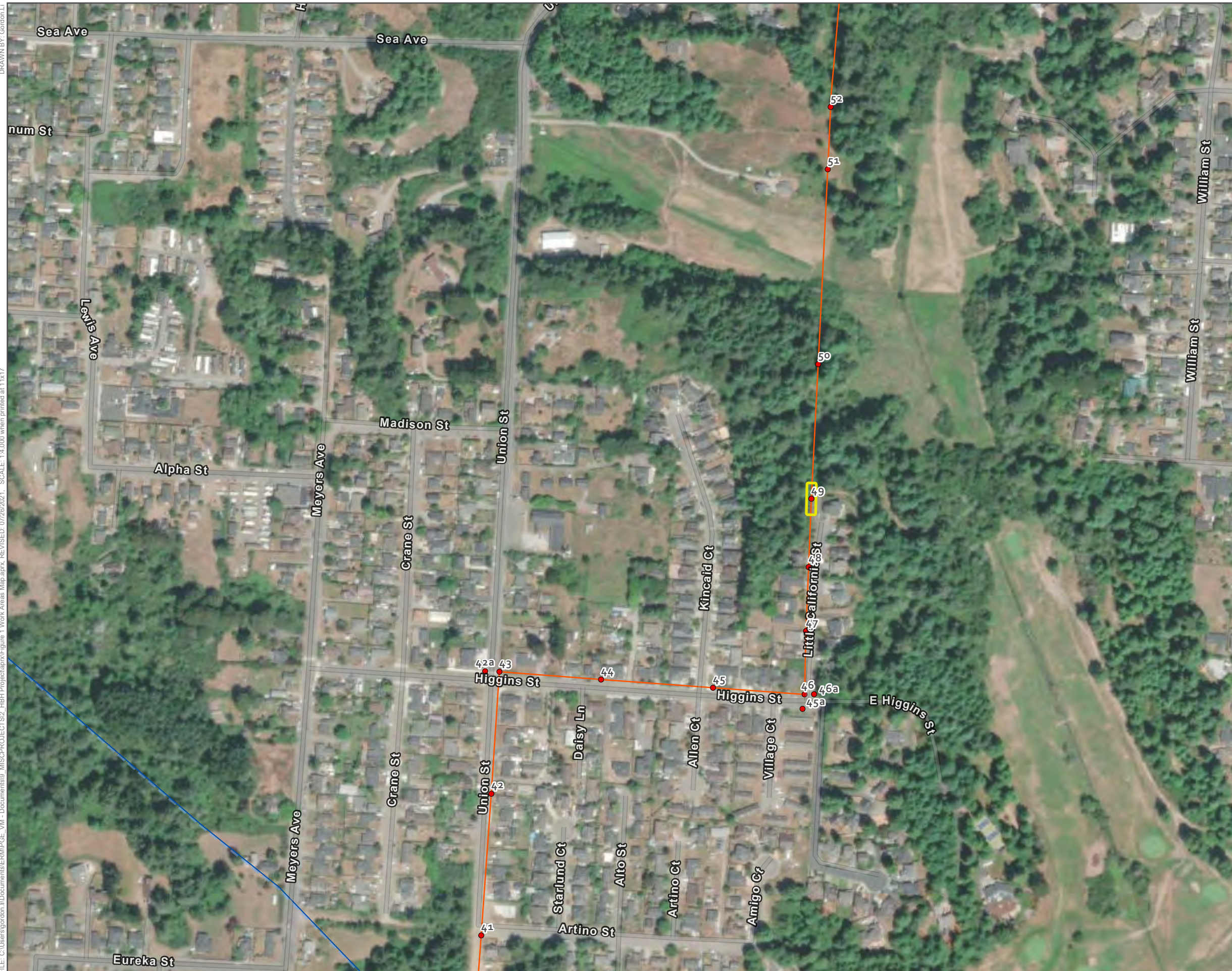


**Figure 1**  
**NTP #1 Work Areas Map**

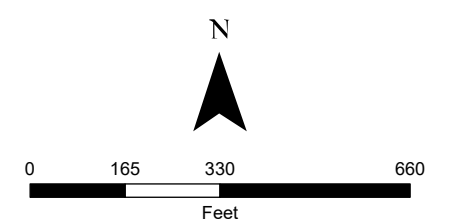
Sheet 3 of 9

*PG&E Humboldt Bay-Humboldt #1 60kV  
Reconductoring Veg Scope 2021*





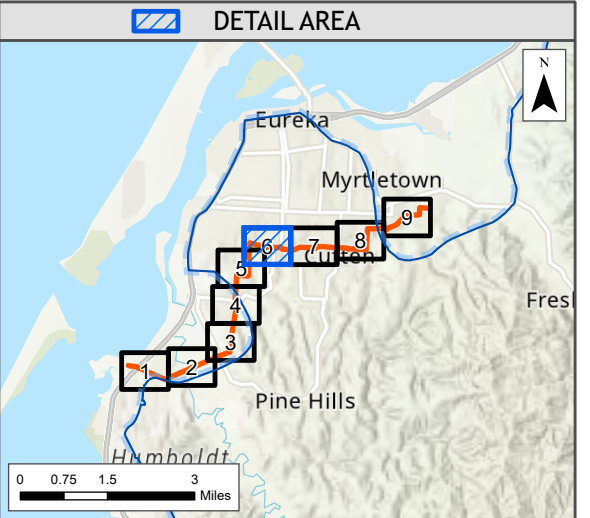
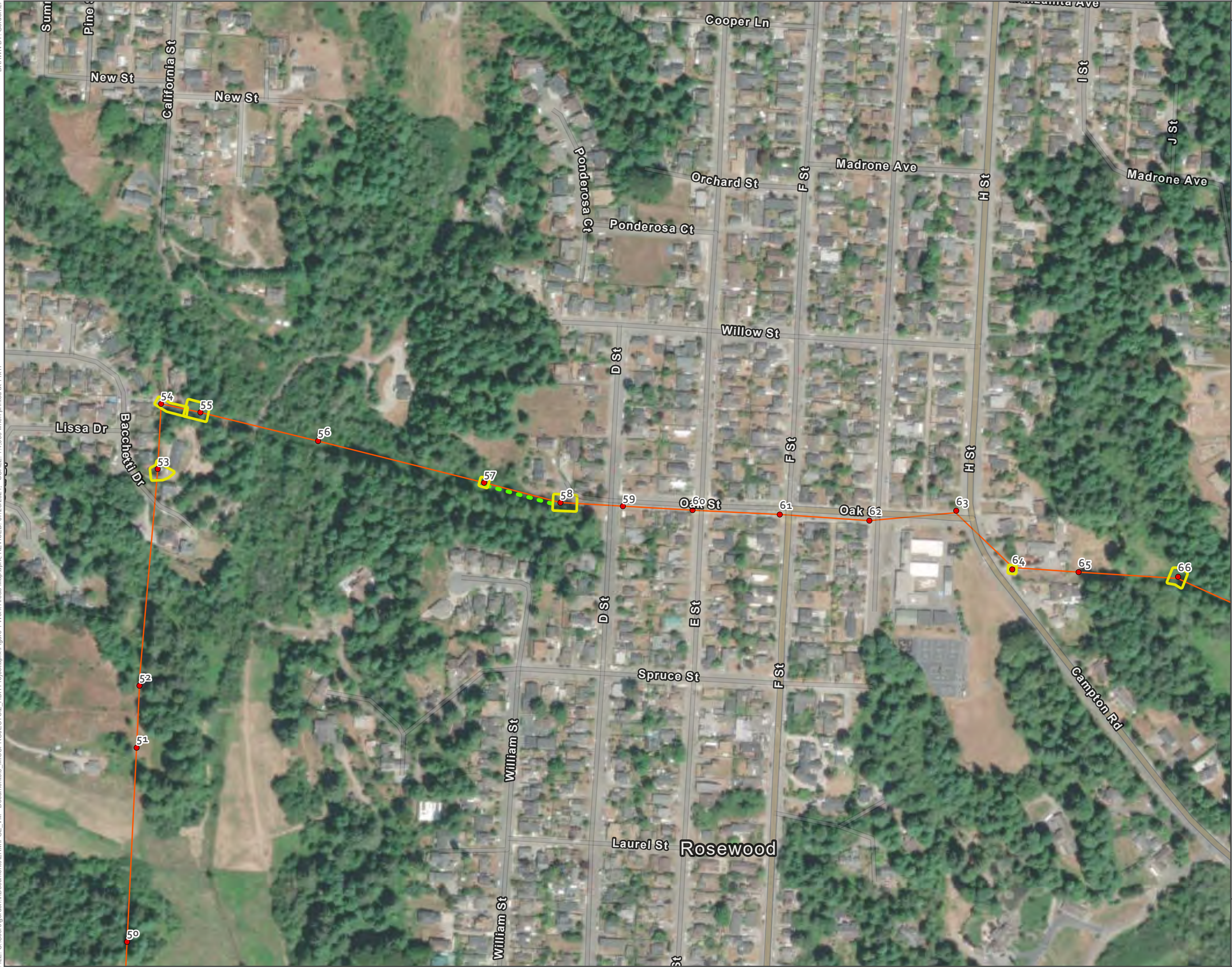
- Sheet Boundary
- Coastal Zone
- Structures and Poles
- Humboldt Bay to Humboldt #1 60kV Power Line
- NTP #1 Work Areas



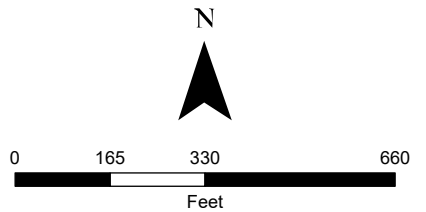
**Figure 1**  
**NTP #1 Work Areas Map**

Sheet 5 of 9

PG&E Humboldt Bay-Humboldt #1 60kV  
Reconductoring Veg Scope 2021



- Sheet Boundary
- Structures and Poles
- Humboldt Bay to Humboldt #1 60kV Power Line
- NTP #1 Work Areas
- Access Route
- Request for Pole 57 Temporary Overland Route (clear/masticate brush)

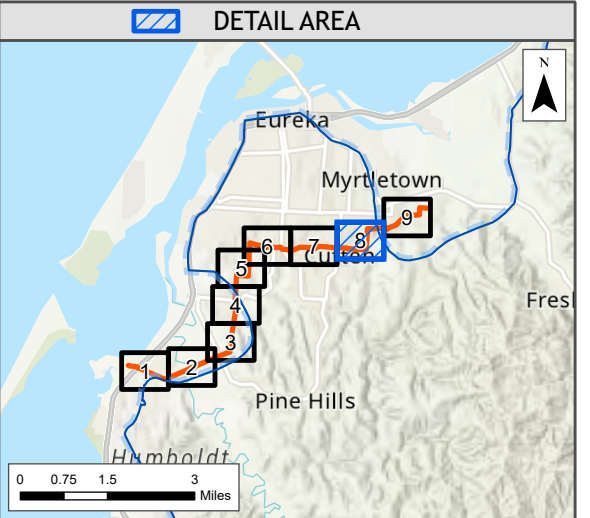
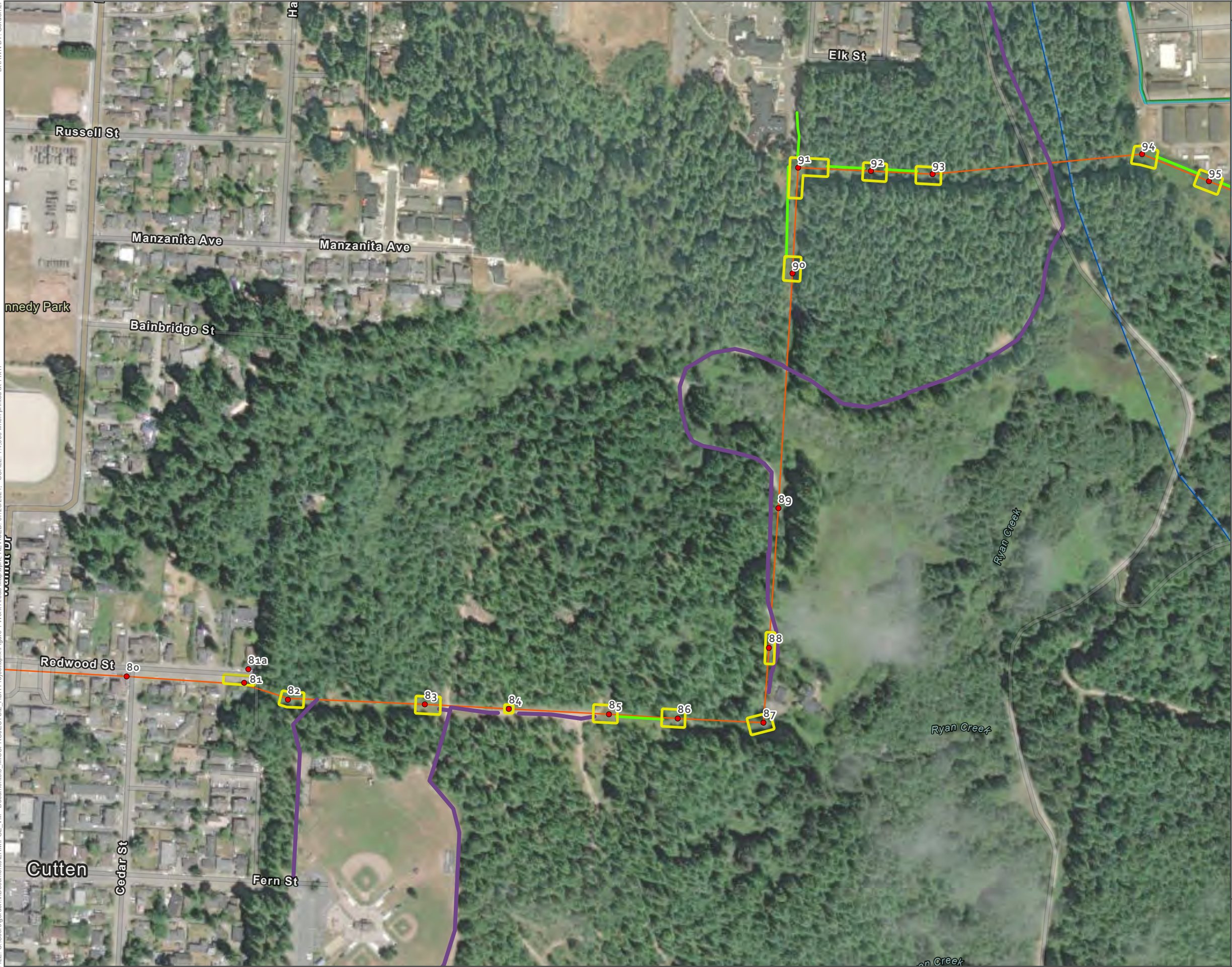


**Figure 1**  
**NTP #1 Work Areas Map**

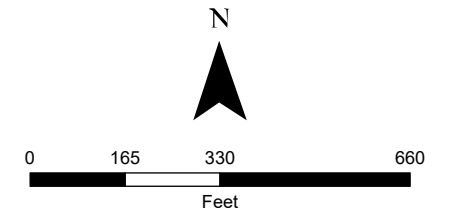
Sheet 6 of 9

PG&E Humboldt Bay-Humboldt #1 60kV  
Reconductoring Veg Scope 2021





- Sheet Boundary
  - Coastal Zone
  - Structures and Poles
  - Humboldt Bay to Humboldt #1 60kV Power Line
  - NTP #1 Work Areas
- Access Route
- Temporary Overland Route (clear/masticate brush)
  - Existing Paved Road
  - Existing Dirt/Gravel Path

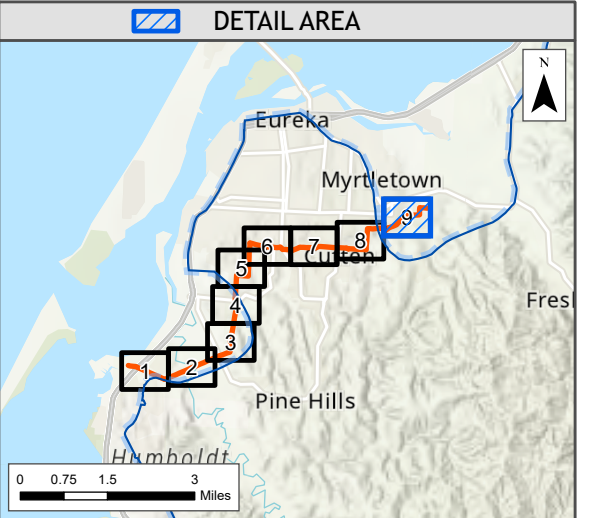


**Figure 1**  
**NTP #1 Work Areas Map**

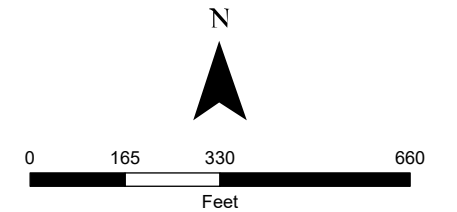
Sheet 8 of 9

PG&E Humboldt Bay-Humboldt #1 60kV  
Reconductoring Veg Scope 2021





- Sheet Boundary
  - Coastal Zone
  - Structures and Poles
  - Humboldt Bay to Humboldt #1 60kV Power Line
  - NTP #1 Work Areas
- Access Route
- ATV Access
  - Foot Access (clear/masticate brush)
  - Temporary Overland Route (clear/masticate brush)
  - Existing Paved Road
  - Existing Dirt/Gravel Path



**Figure 1**  
**NTP #1 Work Areas Map**

Sheet 9 of 9

PG&E Humboldt Bay-Humboldt #1 60kV  
Reconductoring Veg Scope 2021

Attachment B – HBH MMCRP Tracking Table (NTP #1)

Sort Order	APM or MM	Permit	Resource	Measure Text (Text may be split into row with specific action, or if text is not able to be clearly divided, text may be included once in its entirety and note made for subsequent phases/actions.)	Timing	Location(s)	Phase	NTP #1
1	APM AE-1	CPUC - PTC	Aesthetics	Nighttime lighting to minimize potential visual impacts of construction activity. In the unlikely event that nighttime construction activities are necessary, measures such as use of non-glare or hooded fixtures and directional lighting will be used to reduce spillover into areas outside the construction site and minimize the visibility of lighting from off-site locations wherever feasible.	During construction of the project.	As Applicable	During construction.	Not applicable (N/A) to NTP #1. No nighttime work.
2	APM AE-2	CPUC - PTC	Aesthetics	Construction Cleanup. Construction debris will be picked up regularly from construction areas. The appearance of disturbed land areas will be restored through implementation of re-contouring and/or re-vegetation.	During construction of the project.	All Work Locations	During construction.	Not applicable (N/A) to NTP #1. No construction debris will be created during NTP #1.
3	APM AE-3	CPUC - PTC	Aesthetics	Use of Galvanized Finish on LDSs, TSPs, and LSTs. Use of a galvanized finish that will weather to a dull, non-reflective patina on new steel poles and lattice towers will reduce potential for a new source of glare resulting from introduction of project elements.	During construction of the project.	As Applicable	During construction.	N/A to NTP #1.
4	APM AE-4	CPUC - PTC	Aesthetics	Design and operation of staging areas to minimize potential visual impacts. Security lighting may be installed at staging areas including helicopter sites. If nighttime security lighting is required in close proximity to sensitive locations such as existing residences, it will be directional and focused to minimize potential spillover or glare with respect to areas outside the staging area, and non-glare or hooded fixtures may be utilized.	During construction of the project.	Staging Areas & Helicopter Sites	During construction.	N/A to NTP #1. Staging areas already approved; not needed during NTP #1. No helicopter or nighttime work.
5	APM AQ-1	CPUC - PTC	Air Quality	Minimize Fugitive Dust. PG&E will minimize fugitive dust during construction by implementing the following measures: <ul style="list-style-type: none"> <li>• Reduce the amount of the disturbed area where possible.</li> <li>• Use water trucks or sprinkler systems in dry weather in sufficient quantity to prevent airborne dust from leaving the site.</li> <li>• Implement dust control measures as soon as possible following completion of any soil-disturbing activities.</li> <li>• Establish a policy that vehicle speed for all construction vehicles is not to exceed 15 miles per hour on any unpaved surface.</li> <li>• Water all active construction areas (including storage piles) as needed to suppress dust. Base the frequency on the type of operation and the soil and wind exposure.</li> <li>• Cover or maintain at least 2 feet of free board space on haul trucks transporting soil, sand, or other loose material on the site.</li> <li>• Sweep adjacent public roads if visible soil material is carried out from a work site.</li> </ul>	Prior to and during construction.	All Work Locations	During construction.	PG&E will implement during NTP#1 activities, specifically limiting vehicle speeds on unpaved surfaces.
6	Mitigation Measure AQ-1: Supplemental Best Management Practices.	CPUC - PTC	Air Quality	The following measures shall be implemented during the construction phase by PG&E and/or its construction contractors: <ol style="list-style-type: none"> <li>1. All exposed surfaces that could cause dust (e.g., undeveloped parking areas, staging areas, soil piles, graded areas, and unpaved access roads) shall be watered one to two times per day during dry conditions.</li> <li>2. All haul trucks transporting soil, sand, or other loose material off-site shall be covered.</li> <li>3. All visible mud or dirt track-out onto adjacent public roads shall be removed using wet power vacuum street sweepers at least once per day. The use of dry power sweeping is prohibited.</li> <li>4. All roadways, driveways, and sidewalks to be paved shall be completed as soon as possible.</li> <li>5. Idling times shall be minimized either by shutting equipment off when not in use or reducing the maximum idling time to 5 minutes (as required by the California airborne toxics control measure Title 13, Section 2485 of California Code of Regulations[CCR]). Construction workers will be trained on this requirement during tailboard construction trainings.</li> <li>6. All construction equipment shall be maintained and properly tuned in accordance with manufacturer's specifications. All equipment shall be checked by a certified mechanic and determined to be running in proper condition prior to operation.</li> <li>7. Post a publicly visible sign with the telephone number and person to contact at PG&amp;E regarding dust complaints. This person shall respond and take corrective action within 48 hours. The Air District's phone number shall also be visible to ensure compliance with applicable regulations.</li> </ol>	Prior to and during construction.	All Work Locations	During construction.	PG&E will implement measures 3, 5, and 6 during NTP #1. Other measures not N/A to NTP #1.

Sort Order	APM or MM	Permit	Resource	Measure Text (Text may be split into row with specific action, or if text is not able to be clearly divided, text may be included once in its entirety and note made for subsequent phases/actions.)	Timing	Location(s)	Phase	NTP #1
7	APM BIO-1	CPUC - PTC	Biological Resources	Development and implementation of a Worker Environmental Awareness Program. A qualified biologist will conduct an environmental awareness program for all on-site construction personnel before they begin work on the project. Training will include a discussion of the avoidance and minimization measures that are being implemented to protect biological resources as well as the terms and conditions of project permits. Training will include information about the federal and state Endangered Species Acts and the consequences of noncompliance with these acts. Under this program, workers shall be informed of the presence, life history, and habitat requirements of all special-status species that may be affected in the project area, and about state and federal laws protecting nesting birds, wetlands, and other water resources. An educational brochure will be produced for construction crews working on the project. Color photos of special-status species will be included, as well as a discussion of relevant APMs and specific avoidance or minimization measures for special-status species and habitats.	Prior to construction and during all phases of construction activities.	On/Off Site	Prior to construction.	PG&E will present a worker training specific to vegetation management activities.
8	APM BIO-2	CPUC - PTC	Biological Resources	General Resource Protection Measures. This APM consists of the following components: <ul style="list-style-type: none"> <li>• Litter and trash management. All food scraps, wrappers, food containers, cans, bottles, and other trash will be removed from the site daily.</li> <li>• Parking. Vehicles and equipment will be parked on pavement, existing roads, developed areas, or approved construction work areas.</li> <li>• Route and speed limitations. Vehicles will be confined to established roadways or previously disturbed roadways and pre-approved access roads, overland routes, and construction work areas. Access routes and temporary construction work areas will be limited to the minimum necessary to achieve the project goals. Vehicular speeds will be limited to 15 miles per hour on unpaved roads</li> <li>• Maintenance and refueling. All equipment will be maintained to avoid leaks of automotive fluids such as fuels, solvents, or oils. All refueling and maintenance of vehicles and other construction equipment will be restricted to designated staging areas located at least 100 feet from any down-gradient aquatic habitat, unless otherwise isolated from habitat by secondary containment. Proper spill prevention and cleanup equipment will be maintained in all refueling areas.</li> <li>• Hazardous materials spills. Emergency spill response and cleanup kits will be readily available for immediate containment and cleanup of an accidental spill. Construction crews will be trained in safe handling of hazardous materials and cleanup responsibilities. Any spills into aquatic habitat will be reported to the CPUC, USACE, State Water Resources Control Board, and the California Coastal Commission (if within the coastal zone) within 24 hours.</li> <li>• Pets and firearms. No pets, hunting, open fires (such as barbecues), or firearms will be permitted at the project site.</li> <li>• Reporting and communication. The PG&amp;E project biologist will be responsible for immediately reporting any capture and relocation, or inadvertent harm, entrapment, or death of a federally or state listed species under ESA or CESA, respectively to the USFWS and CDFW, respectively.</li> <li>• Restore temporarily disturbed habitats. All habitat areas for special-status species that are temporarily disturbed as a result of project activities will be restored upon completion of construction. Disturbed areas will be restored to pre-project conditions in coordination with land owners and in compliance with resource agency permit conditions. Tidal marsh areas will be allowed to passively restore or as otherwise required by resource agency permit requirements.</li> <li>• Erosion control materials. Only tightly woven netting or similar material will be used for all geo-synthetic erosion control materials such as coir rolls and geo-textiles. No plastic monofilament matting will be used.</li> <li>• Minimize grading and vegetation removal along access roads and construction work areas, to the extent feasible. PG&amp;E will only trim, clear, or remove vegetation as necessary to establish the access routes and allow equipment use. Trees will be directionally felled away from sensitive biological resource areas, and if that is not possible, removed in sections. Damage to adjacent trees will be avoided to the extent possible.</li> <li>• Weed management. Vehicles and construction equipment will be cleaned of mud and dirt on site at a PG&amp;E wash facility or otherwise approved wash-down location as needed to minimize transport of weed plant parts or seed. Vehicles will also be cleaned at the completion of the project or when off-road use for that vehicle has been completed.</li> </ul>	Prior to onset of construction and during all phases of construction activities.	All Work Locations	During construction.	PG&E will implement during NTP#1 activities

Sort Order	APM or MM	Permit	Resource	Measure Text (Text may be split into row with specific action, or if text is not able to be clearly divided, text may be included once in its entirety and note made for subsequent phases/actions.)	Timing	Location(s)	Phase	NTP #1
9	APM BIO-3	CPUC - PTC	Biological Resources	Conduct Preconstruction Survey(s) for Special-Status Species and Sensitive Biological Resource Areas. A qualified biologist will conduct pre-construction survey(s) in areas identified in the BRTR as having habitat for special-status species and sensitive biological resource areas, either during the appropriate phenological period for plants or within 7 days prior to construction activities for wildlife. If any special-status species is encountered during the pre-construction survey(s), the PG&E project biologist will be contacted immediately. If any special-status species are found nearby but outside the construction work area, they will not be disturbed. If recommended by the biologist, a temporary silt-fence barrier may be installed to prevent special-status species from entering the construction work area(s) during project activities.	Within 7 days prior to construction and during all phases of construction activities.	Special-status species and sensitive biological resource areas.	Prior to construction.	PG&E will implement during NTP#1 activities
10	APM BIO-4	CPUC - PTC	Biological Resources	Identification and Marking of Sensitive Biological Resource Areas. Sensitive biological resources (e.g., special-status plants, wetlands) in or adjacent to construction work areas identified during the pre-construction surveys, will be clearly marked in the field and on project maps. Such areas will be avoided during construction to the extent practicable.	Within 30 days prior to construction.	Special-status species and sensitive biological resource areas.	During construction.	PG&E will implement during NTP#1 activities
11	APM BIO-5	CPUC - PTC	Biological Resources	Biological Monitor On-Site during Construction Activities in Sensitive Biological Resource Areas. A qualified biologist will be onsite during ground-disturbing construction activities in sensitive biological resource areas identified in APM BIO-4 above unless the area has been protected by barrier fencing to protect sensitive biological resources and previously cleared by the qualified biologist. The qualified biologist will ensure implementation and compliance with all avoidance and mitigation measures and have the authority to stop or redirect work if construction activities are likely to affect sensitive biological resources.	During all phases of construction activities.	Special-status species and sensitive biological resource areas.	During construction.	A qualified biologist will monitor vegetation removal in wetland areas.
12	APM BIO-6:	CPUC - PTC	Biological Resources	Nesting Bird Impact Avoidance and Protection. If construction work is scheduled during the nesting season (February 1 through August 31), nest detection surveys will correspond with a standard buffer for individual species in accordance with the species-specific buffers set forth in Appendix C of the PEA and will occur within 7 days prior to the start of construction to determine nesting status by a qualified biologist. Nest surveys will be accomplished by ground surveys and will support phased construction, with surveys scheduled to be repeated if construction lapses in a construction work area for 7 days between March and July. Access for ground surveys will be subject to property owner permission.  If active nests containing eggs or young are found, the biologist will establish a species-specific nest buffer, as defined in Appendix C of the PEA. Where feasible, standard buffers will apply, although the biologist may increase or decrease the standard buffers in accordance with the factors set forth in Appendix C. Nesting pair acclimation to disturbance in areas with regularly occurring human activities will be considered when establishing nest buffers. The established buffers will remain in effect until the young have fledged or the nest is no longer active as confirmed by the biologist. Active nests will be periodically monitored until the biologist has determined that the young have fledged or once construction ends. At the discretion of the biologist, vegetation removal by hand may be allowed within nest buffers or in areas of potential nesting activity. Inactive nests may be removed in accordance with PG&E's approved avian permits. The biologist will have authority to order the cessation of nearby project activities if nesting pairs exhibit signs of disturbance.	Up to 30 days prior to construction and during construction.	All Work Locations	During construction.	N/A to NTP #1. Work will be performed outside of nesting season.
13	APM BIO-7	CPUC - PTC	Biological Resources	Prior to the start of construction and in conjunction with APM-BIO 3, a qualified botanist will resurvey mapped populations of Lyngbye's sedge and flag or otherwise mark (e.g., stake, fence) all special-status plant populations documented adjacent to construction work areas for avoidance as feasible. After project activities have been completed at a given worksite, all staking, fencing, or flagging will be removed. If complete avoidance of special-status plant populations is not possible, PG&E will implement the following: <ul style="list-style-type: none"> <li>PG&amp;E will limit driving across special-status plant populations to the greatest extent feasible. Where direct disturbance to topsoil (except excavation) is unavoidable, matting and other protection measures (e.g., rig mats, timber roads, plating, or tracked vehicles) will be used to minimize soil compaction or destruction of underground plant structures. Matting and other protection measures will be approved by a qualified biologist before work begins at that location.</li> <li>For any unavoidable excavation required within Lyngbye's sedge populations, the upper 6 inches of topsoil containing the plant's rhizomes will be stockpiled. PG&amp;E will use the stockpiled topsoil to restore the area after temporary construction has been completed.</li> </ul>	Immediately prior to and during construction.	Special-status species and sensitive biological resource areas.	Prior to construction.	Vegetation removal activities are not scheduled to occur at the locations where Lyngbye's sedge was previously identified. If the Lyngbye's sedge is identified, PG&E will limit driving across it during vegetation management activities.

Sort Order	APM or MM	Permit	Resource	Measure Text (Text may be split into row with specific action, or if text is not able to be clearly divided, text may be included once in its entirety and note made for subsequent phases/actions.)	Timing	Location(s)	Phase	NTP #1
14	APM BIO-8	CPUC - PTC	Biological Resources	Special-Status Amphibian and Reptile Impact Avoidance and Protection. During wet weather or the rainy season, all open holes, pits, and trenches will be protected to ensure that frogs, salamanders, and/or turtles do not become entrapped. Protective fencing, coverings, or ramps will be installed to either prevent wildlife from falling into excavations or to allow for escape. At the end of each work day, steep-walled holes or trenches more than six inches deep will be covered or provided with one or more escape ramps and/or fenced. Open excavations will be inspected each morning, prior to the start of construction activities, to ensure that no wildlife are trapped. Construction personnel will also check underneath vehicles and within materials to be moved (i.e., tires, tracks, pipes, etc.) for the presence of frogs, salamanders, and/or turtles when parked or placed near suitable aquatic or upland dispersal habitat. Any species found will be captured and relocated to an approved location as approved by the resource agencies, if required, and in compliance with any regulatory permits issued for the project.	During construction.	All Work Locations	During construction.	No excavation activities will occur during NTP #1. Personnel will check under vehicles and equipment before moving it.
15	APM BIO-9	CPUC - PTC	Biological Resources	Implement General Protection Measures for Wetlands and Other Waters. PG&E will implement the following general measures to minimize or avoid impacts on wetlands and other waters: <ul style="list-style-type: none"> <li>• Avoid wetlands and other waters to the extent feasible.</li> <li>• Construction activities in wetlands will generally occur during the dry season (May 1 to October 15) to the extent feasible.</li> <li>• Ground-based construction activities in tidally influenced wetlands near Buhne Slough will not occur during extreme high tide events that would flood the construction work areas.</li> <li>• Where travel across seasonal wetlands is necessary, it will occur during dry conditions, when feasible, to avoid soil compaction or mixing. If travel is required during wet or moist conditions, temporary matting or other protection measure (e.g., rig mats, timber roads, plating, or tracked vehicles [preferably rubber tracked]) will be used to avoid soil compaction or mixing. Matting and other protection measures will be approved by a qualified biologist before construction work at that location begins.</li> <li>• Conduct all fueling of vehicles at least 100 feet from wetlands and other water bodies unless approved by a qualified biologist.</li> <li>• Set construction work areas back at least 50 feet from streams, creeks, or other water bodies unless approved by a qualified biologist.</li> <li>• Implement a Storm Water Pollution Prevention Plan (SWPPP) to minimize construction-related erosion and sediments from entering nearby waterways (see APM WQ-1).</li> </ul>	Prior to and during ground disturbing construction activities.	100 feet from wetlands and other water bodies	During construction.	PG&E will implement during NTP#1 activities
16	APM BIO-10	CPUC - PTC	Biological Resources	Restore Temporarily Impacted Wetlands and Other Waters. All wetlands and other waters that are temporarily disturbed as a result of project activities will be restored following completion of construction in accordance with any applicable resource agency permits.	As part of the final design and prior to construction.  At the conclusion of construction.  To be completed as part of permitting	Wetlands and other waters.	Post construction.	N/A to NTP #1
17	APM BIO-11	CPUC - PTC	Biological Resources	Compensate for Permanent Impacts on Wetlands and Other Waters in Accordance with Project Permits. PG&E will compensate for permanent impacts on wetlands by providing at least 1:1 mitigation for any unavoidable permanent impacts to wetlands and waters within the coastal zone and in compliance with resource agency permit requirements. Final compensation ratios for impacts to wetlands and waters throughout the project alignment will be based on site-specific information and finalized through discussions with the U.S. Army Corps of Engineers and the North Coast Regional Water Quality Control Board as part of the permitting processes for the project.	As part of the final design and prior to construction.  At the conclusion of construction.  To be completed as part of permitting	Wetlands and other waters.	Post construction.	N/A to NTP #1
18	APM BIO-12	CPUC - PTC	Biological Resources	Minimize Impact to Marbled Murrelet. Helicopter work will not commence until at least two hours after sunrise and will end at least one hour before sunset to avoid the potential to interrupt peak daily feeding cycles for marbled Murrelet.	During construction.	All Work Locations	During construction.	No helicopters will be used during NTP #1 activities

Sort Order	APM or MM	Permit	Resource	Measure Text (Text may be split into row with specific action, or if text is not able to be clearly divided, text may be included once in its entirety and note made for subsequent phases/actions.)	Timing	Location(s)	Phase	NTP #1
19	MM BIO-1	CPUC - PTC	Biological Resources	<p>Pre-construction Bat Survey. A pre-construction survey for special-status bat (i.e., Townsend's big-eared bat [<i>Corynorhinus townsendii</i>] and pallid bat [<i>Antrozous pallidus</i>]) habitat shall be conducted by a qualified biologist (i.e., who is experienced in the identification of special-status bat habitat) in advance of any tree removal, to identify signs of potential bat habitat and use (e.g., basal hollows in large trees or snags, large cavities or crevices, spaces under loose/exfoliating tree bark, or deep bark fissures). Bat maternity colonies will be avoided during construction. Should potential roosting habitat, or active bat roosts be found in trees to be removed, the following measures shall be implemented:</p> <ul style="list-style-type: none"> <li>• Tree removal shall occur outside of months of maternity roosting (approximately April 15 to August 15) and winter torpor (approximately October 31 to March 31), to the extent feasible.</li> <li>• Trees with maternity roosts shall be avoided during the roosting period (April 15 to August 15). If pre-construction surveys identify suitable bat roosting habitat in a tree planned for removal, a qualified biologist shall be present during tree removal. Trees shall be disturbed only when no rain is occurring or is not forecast to occur for three days and when daytime temperatures are at least 50 degrees Fahrenheit (°F).</li> <li>• Trimming and removal of trees containing or suspected to contain roost sites shall be done under supervision of a qualified biologist and implemented over two days. On day one, branches and limbs not containing cavities or fissures in which bats could roost shall be cut using chainsaws. The following day, the remainder of the tree, including branches or limbs containing roost sites shall be removed under the supervision of the biologist, also using chainsaws.</li> </ul>	Prior to final design and construction.	Special-status species and sensitive biological resource areas.	Prior to construction.	PG&E will perform the bat survey prior to commencement of tree removal, and adhere to the mitigation measure requirements should potential roosting habitat or active bat roosts be found in trees to be removed.
20	MM BIO-2	CPUC - PTC	Biological Resources	<p>Habitat Restoration Plan. A qualified ecologist shall prepare and implement a restoration plan with detailed specifications for restoring all temporarily disturbed sensitive natural communities. The plan shall provide for the following:</p> <ul style="list-style-type: none"> <li>• Pre-construction surveys by a qualified biologist of representative impact areas to characterize vegetation present.</li> <li>• Use of locally native, ecologically suitable species for revegetation.</li> <li>• Sanitation measures (e.g., locally sourced cuttings, elimination of container stock, or exclusive use of container plants grown according to plant pathogen best management practices) to prevent the introduction and/or spread of sudden oak death, other plant pathogens, and invasive plants during revegetation.</li> <li>• Monitoring by a qualified biologist up to a period of five years unless performance standards are met earlier, or as specified by state and federal permitting agencies.</li> <li>• Include minimum performance criteria for combined native and naturalized plant cover (50 percent, or equal to or greater than baseline within the monitoring period, or as specified by state and federal permitting agencies); and for maximum invasive plant cover (to return the project back to baseline conditions, or as specified by state and federal permitting agencies).</li> </ul>	<p>As part of final design and prior to construction.</p> <p>At the conclusion of construction.</p>	Restoration sites.	Post construction.	N/A to NTP #1
21	APM CUL-1	CPUC - PTC	Cultural Resources	<p>Workers Environmental Awareness Training. PG&amp;E will provide environmental awareness training on archaeological resources protection. This training may be administered by the principal cultural resource specialist (CRS) as a stand-alone training or included as part of the overall environmental awareness training as required by the project and will at minimum include: types of cultural resources or fossils that could occur at the project site; types of soils or lithologies in which the cultural resources could be preserved; procedures that should be followed in the event of a cultural resource or human remain discovery; and penalties for disturbing cultural resources.</p>	Prior to any grounddisturbance.	On/Off Site	Prior to construction.	PG&E will implement during NTP#1 activities
22	APM CUL-2	CPUC - PTC	Cultural Resources	<p>Flag and Avoid Resources (Spiegelberg Homestead Archaeological Deposit). The archaeological deposit at the Spiegelberg Homestead is not in the PAL, but adjacent to it. There are no roadway or land improvements proposed in this location as use of this area is limited to access to a landing zone. Additionally, no pole replacements or installations are proposed at this location. However, to ensure no inadvertent impacts occur to this resource, a qualified archaeologist will establish exclusion flagging or safety fencing around the archaeological site.</p>	Prior to any grounddisturbance.	Spiegelberg Homestead Archaeological Deposit	During construction.	N/A to NTP #1. No vegetation management activities needed near this location.

Sort Order	APM or MM	Permit	Resource	Measure Text (Text may be split into row with specific action, or if text is not able to be clearly divided, text may be included once in its entirety and note made for subsequent phases/actions.)	Timing	Location(s)	Phase	NTP #1
23	APM CUL-3	CPUC - PTC	Cultural Resources	<p>Manage Unanticipated Cultural Resources Discoveries. ground-disturbance.</p> <p>a) Cultural Resources If cultural resources are inadvertently discovered during site preparation or construction activities, work will stop in that area and within 100 feet of the find until a qualified PG&amp;E CRS/archaeologist can assess the significance of the find and, if necessary, develop appropriate treatment measures in consultation with PG&amp;E and other appropriate agencies. Work may continue on other portions of the site with the CRS/archaeologist's approval. PG&amp;E will implement the CRS/archaeologist's recommendations for treatment of discovered cultural resources.</p> <p>b) Human Remains In keeping with the provisions provided in 7050.5 CHSC and Public Resource Code 5097.98, in the unlikely event that human remains or suspected human remains are encountered during any project-related activity, PG&amp;E will:</p> <ul style="list-style-type: none"> <li>• Stop all work within 100 feet;</li> <li>• Immediately contact the CRS, who will then notify the county coroner and the CPUC;</li> <li>• Secure the location, but do not touch or remove remains and associated artifacts;</li> <li>• Do not remove associated spoils or pick through them;</li> <li>• Record the location and keep notes of all calls and events; and</li> <li>• Treat the find as confidential and do not publicly disclose the location.</li> </ul> <p>If the coroner determines that the remains are Native American, California Health and Safety Code 7050.5 and PRC Section 5097.98 require that the PG&amp;E CRS contact the NAHC within 24 hours. The NAHC, as required by PRC Section 5097.98, will determine and notify the Most Likely Descendant.</p>	Prior to and during construction involving ground-disturbance.	All Work Locations	During construction.	No ground disturbance (excavation) will occur during NTP #1.
24	Mitigation Measure CUL-1:	CPUC - PTC	Cultural Resources	<p>This measure supersedes APM CUL-3(a) and CUL-4. If indigenous or historic-era archaeological resources are encountered during proposed Project development or operation, PG&amp;E and/or its contractors shall immediately cease all construction activity within 100 feet of the find and flag off the area for avoidance. The CPUC and a qualified archaeologist, defined as one meeting the U.S. Secretary of the Interior's Professional Qualifications Standards for Archeology and with expertise in California archaeology, shall be immediately informed of the discovery. The qualified archaeologist shall inspect the discovery and notify the CPUC of their initial assessment. Indigenous archaeological materials might include obsidian and chert flaked-stone tools (e.g., projectile points, knives, scrapers) or toolmaking debris; culturally darkened soil (midden) containing heat-affected rocks, artifacts, or shellfish remains; stone milling equipment (e.g., mortars, pestles, handstones, or milling slabs); and battered stone tools, such as hammerstones and pitted stones. Historic-era materials might include building or structure footings and walls, and deposits of metal, glass, and/or ceramic refuse. If the qualified archaeologist determines that the resource is or is potentially indigenous in origin, culturally affiliated California Native American Tribes shall be contacted to assess the find and determine whether it is potentially a tribal cultural resource.</p> <p>If the CPUC determines, based on formal evaluations of California Register-eligibility (at Public Resources Code Section 5024.1(c)) documented by the qualified archaeologist and the culturally affiliated California Native American Tribes (if the resource is indigenous), that the resource is either an historical resource or unique archaeological resource (as defined in CEQA Guidelines Section 15064.5 and Public Resources Code Section 21083.2), or that the resource may qualify as a tribal cultural resource (as defined in Public Resources Code Section 21074), then the resource shall be avoided if feasible. Avoidance means that no activities associated with the proposed Project that may impact cultural resources shall occur within the boundaries of the resource or any defined buffer zones. The CPUC shall determine whether avoidance is feasible considering factors such as the nature of the find, project design, costs, and other considerations. Formal significance evaluations under California Register Criterion 4 shall be guided by research designs developed by a qualified archaeologist.</p> <p>If avoidance of such a resource is not feasible, the CPUC shall consult with a qualified archaeologist, culturally affiliated California Native American Tribes (if the resource is indigenous), and other appropriate interested parties to determine treatment measures to minimize or mitigate any potential impacts to the resource pursuant to Public Resources Code Section 21083.2 and CEQA Guidelines Section 15126.4.</p> <p>If avoidance is not feasible, the CPUC shall prepare and implement an Archaeological (and/or Tribal Cultural) Resources Treatment Plan that outlines the treatment measures for the resource based on the resource's values/significance as detailed in the formal California Register-eligibility evaluation.</p> <p>Any treatment measures implemented shall be documented in a professional-level technical report (e.g., Archaeological Testing Results Report, Archaeological Data Recovery Report, Ethnographic Report, etc.), to be authored by a qualified archaeologist and filed with CPUC. Construction work at the location of the find may commence upon completion of the</p>	Prior to and during construction involving ground-disturbance.	All Work Locations	During construction.	No ground disturbance (excavation) will occur during NTP #1.



Sort Order	APM or MM	Permit	Resource	Measure Text (Text may be split into row with specific action, or if text is not able to be clearly divided, text may be included once in its entirety and note made for subsequent phases/actions.)	Timing	Location(s)	Phase	NTP #1
25	APM GEO-1	CPUC - PTC	Geology, Soils, and Paleontological Resources	Minimization of Construction in Soft or Loose Soils. Where soft or loose soils are encountered during project construction, appropriate measures will be implemented to avoid, accommodate, replace, or improve such soils. Depending on site specific conditions and permit requirements, these measures may include excavating soft or loose soils and replacing them with engineered backfill materials, or installing matting in temporary work areas.	Prior to construction activities.		During construction.	No ground disturbance (excavation) will occur during NTP #1
26	APM GEO-2	CPUC - PTC	Geology, Soils, and Paleontological Resources	Reduction of Slope Instability during Construction. Existing natural or temporarily constructed slopes affected by construction or operations will be evaluated for stability. Grading plans will be designed to limit the potential for slope instability and minimize the potential for erosion.	Prior to construction activities.	All Work Locations	Prior to construction.	No grading will occur during NTP #1
27	APM PALEO-1	CPUC - PTC	Geology, Soils, and Paleontological Resources	Unanticipated Potential Paleontological Resource. If significant paleontological resources are discovered during construction activities, the following procedures will be followed: <ul style="list-style-type: none"> <li>• Stop work immediately within 100 feet.</li> <li>• Contact the designated project inspector and PG&amp;E CRS immediately;</li> <li>• Protect the site from further impacts, including looting, erosion or other human or natural damage;</li> <li>• The PG&amp;E CRS in tandem with CPUC will arrange for a qualified paleontologist to evaluate the discovery. The paleontologist will be responsible for developing the recovery strategy in tandem with PG&amp;E and will lead the recovery effort, which will include establishing recovery standards, preparing specimens for identification and preservation, documentation and reporting, and securing a curation agreement from the approved agency; and,</li> <li>• Work may not resume within 100 feet of the find until approval by the paleontologist and PG&amp;E CRS.</li> </ul>	During construction activities involving ground disturbance.	All Work Locations	During construction.	No ground disturbance (excavation) will occur during NTP #1
28	APM PALEO-2	CPUC - PTC	Geology, Soils, and Paleontological Resources	Worker's Environmental Awareness Training. Moderate and potentially high sensitivity formations are identified within the PAL; therefore, PG&E will provide environmental awareness training on paleontological resources protection. This training may be administered as a stand- alone training or included as part of the overall environmental awareness training as required by the project. The training will include, at minimum, the following: <ul style="list-style-type: none"> <li>• The types of fossils that could occur at the project site.</li> <li>• The types of lithologies in which the fossils could be preserved.</li> <li>• The procedures that should be taken in the event of a fossil discovery.</li> <li>• Penalties for disturbing paleontological resources.</li> </ul>	Training shall take place prior to and during construction for new staff.	On/Off Site	Prior to construction.	PG&E will implement during NTP#1 activities
29	APM GHG-1	CPUC - PTC	Greenhouse Gas Emissions	Minimize GHG Emissions. <ul style="list-style-type: none"> <li>• Maintain construction equipment in proper working conditions in accordance with PG&amp;E standards.</li> <li>• Minimize unnecessary construction vehicle idling time. The project will apply a "common sense" approach to vehicle use, so that idling is reduced as far as possible below the maximum of 5 consecutive minutes allowed by California law; if a vehicle is not required for use immediately or continuously for construction activities, its engine will be shut off.</li> <li>• Maintain construction equipment in proper working conditions in accordance with PG&amp;E standards.</li> <li>• Minimize construction equipment exhaust by using low-emission or electric construction equipment where feasible.</li> </ul> Portable diesel-fueled construction equipment with engines of 50 horsepower or larger and manufactured in 2000 or later will be registered under the CARB Statewide Portable Equipment Registration Program. <ul style="list-style-type: none"> <li>• Minimize welding and cutting by using compression of mechanical applications where practical and within standards.</li> <li>• Encourage the recycling of construction waste where feasible</li> </ul>	Prior to and during construction.	All Work Locations	During construction.	PG&E will implement during NTP#1 activities

Sort Order	APM or MM	Permit	Resource	Measure Text (Text may be split into row with specific action, or if text is not able to be clearly divided, text may be included once in its entirety and note made for subsequent phases/actions.)	Timing	Location(s)	Phase	NTP #1
30	APM HAZ-1	CPUC - PTC	Hazards and Hazardous Materials	<p>Hazardous-Substance Control and Emergency Response. PG&amp;E will implement its hazardous substance control and emergency response procedures to ensure the safety of the public and site workers during construction. The procedures identify methods and techniques to minimize the exposure of the public and site workers to potentially hazardous materials during all phases of project construction through operation. They address worker training appropriate to the site worker's role in hazardous substance control and emergency response. The procedures also require implementing appropriate control methods and approved containment and spill-control practices for construction and materials stored on site. If necessary to store chemicals on site, they will be managed in accordance with all applicable regulations. Material safety data sheets will be maintained and kept available.</p> <p>No known soil contamination was identified within the project site. In the event that soils suspected of being contaminated (on the basis of visual, olfactory, or other evidence) are unearthed during site grading or excavation activities, the excavated soil will be tested, and if contaminated above hazardous waste levels, will be contained and disposed of at a licensed waste facility. The presence of known or suspected contaminated soil will require testing and investigation procedures to be supervised by a qualified person, as appropriate, to meet state and federal regulations.</p> <p>All hazardous materials and hazardous wastes will be handled, stored, and disposed of in accordance with all applicable regulations, by personnel qualified to handle hazardous materials. The hazardous substance control and emergency response procedures include, but are not limited to, the following:</p> <ul style="list-style-type: none"> <li>• Proper disposal of potentially contaminated soils.</li> <li>• Establishing site-specific buffers for construction vehicles and equipment located near sensitive resources.</li> <li>• Emergency response and reporting procedures to address hazardous material spills.</li> <li>• Stopping work at that location and contacting the County Fire Department Hazardous Materials Unit immediately if visual contamination or chemical odors are detected. Work will be resumed at this location after any necessary consultation and approval by the Hazardous Materials Unit.</li> </ul> <p>PG&amp;E will complete a standard Emergency Action Plan Form as part of project tailboard meeting. The purpose of the form is to gather emergency contacts numbers, first aid location, work site location, and tailboard information.</p>	Prior to and during construction.	All Work Locations	During construction.	PG&E will implement during NTP#1 activities
31	APM HAZ-2	CPUC - PTC	Hazards and Hazardous Materials	<p>Worker Environmental Awareness Program (WEAP) for Health, Safety, and Environment. The WEAP will include the following components related to hazards and hazardous materials:</p> <ul style="list-style-type: none"> <li>• PG&amp;E health, safety, and environmental expectations and management structure.</li> <li>• Applicable regulations.</li> <li>• Summary of hazardous substances and materials that may be handled and/or to which workers may be exposed.</li> <li>• Summary of the primary workplace hazards to which workers may be exposed.</li> <li>• Overview of the measures identified in APM HAZ-1.</li> <li>• Overview of the controls identified in the Stormwater Pollution Prevention Plan under APM HYDRO-1. This measure will be coordinated with worker training required under APM BIO-1 and APM WQ-2.</li> </ul>	Prior to construction and ongoing for new staff.	On/Off Site	Prior to construction.	PG&E will present a worker training specific to vegetation management activities.
32	APM HAZ-3	CPUC - PTC	Hazards and Hazardous Materials	<p>Fire Risk Management. PG&amp;E will follow its standard fire risk management procedures, including safe work practices, work permit programs, training, and fire response. Project personnel will be directed to park away from dry vegetation. During fire season, all motorized equipment driving off paved or maintained gravel/dirt roads will have federal- or state-approved spark arrestors. All off-road vehicles will be equipped with a shovel and backpack pump filled with water and all fuel trucks will carry a large fire extinguisher with minimum rating of B:C.</p>	Prior to and during construction.	All Work Locations	During construction.	PG&E will implement during NTP#1 activities

Sort Order	APM or MM	Permit	Resource	Measure Text (Text may be split into row with specific action, or if text is not able to be clearly divided, text may be included once in its entirety and note made for subsequent phases/actions.)	Timing	Location(s)	Phase	NTP #1
33	APM WQ-1	CPUC - PTC	Hydrology and Water Quality	Development and Implementation of a SWPPP. Following project approval, PG&E will prepare and implement a SWPPP to minimize construction impacts on surface water and groundwater quality. The SWPPP will be designed specifically for the hydrologic setting of the proposed project (e.g., surface topography, etc.). The SWPPP will include procedures and standards to stabilize graded areas, reduce erosion, avoid release of hazardous materials and sediment to surface waters, and manage dewatering effluents. The SWPPP will identify BMPs and erosion and sediment control measures, such as straw wattles, water bars, covers, silt fences, storm drain inlet protection, mud trackout controls, and sensitive area access restrictions (e.g., flagging) that will be installed before the onset of winter rains or anticipated storm events to minimize impacts on surface water and groundwater.	Prior to construction.	The hydrologic setting of the proposed project.	Prior to construction.	A SWPPP is not required for NTP #1 due to lack of ground-disturbing activities
34	APM WQ-2	CPUC - PTC	Hydrology and Water Quality	Worker Environmental Awareness Training (WEAP) Development and Implementation. Worker environmental awareness training will communicate environmental issues and appropriate work practices specific to the project. The WEAP will include applicable portions of the SWPPP, including spill prevention and response measures, groundwater handling measures, and proper BMP implementation. The training will emphasize safe handling of hazardous materials, site-specific physical conditions to improve hazard prevention (e.g., identification of flow paths to the nearest water bodies), and a review of all site specific water quality requirements.	Training shall take place prior to and during construction for new staff.	On/Off Site	Prior to construction.	PG&E will implement during NTP#1 activities
35	APM NOI-1	CPUC - PTC	Noise and Vibration	Employ Noise-Reducing Construction Practices during Temporary Construction Activities. PG&E will employ standard noise-reducing construction practices such as the following: <ul style="list-style-type: none"> <li>• Construction equipment will use noise-reduction devices that are no less effective than those originally installed by the manufacturer.</li> <li>• Locate stationary equipment as far as practical from noise-sensitive receptors.</li> <li>• Limit unnecessary engine idling.</li> <li>• Limit all construction activity near sensitive receptors to daytime hours unless required for safety or to comply with line clearance requirements.</li> </ul>	During construction.	All Work Locations	During construction.	PG&E will implement during NTP#1 activities
36	APM NOI-2	CPUC - PTC	Noise and Vibration	Notify Residents of Nighttime Construction. Should nighttime project construction be necessary because of planned clearance restrictions, residents within 300 feet of the construction site(s) will be notified at least 7 days in advance by mail, personal visit, door hanger, or e-mail and informed of the expected work schedule.	At least 7 days prior to nighttime work.	500 feet of planned nighttime construction activities.	During construction.	No nighttime work will occur during NTP #1
37	APM NOI-3	CPUC - PTC	Noise and Vibration	Notify Sensitive Receptors of Helicopter Use. Sensitive receptors within 300 feet of areas where helicopters will be used for construction will be notified by mail, personal visit, door hanger, or email at least 7 days prior to beginning helicopter activities. Notification will include posting signs in appropriate locations with a contact number to call with questions and concerns.	At least 7 days prior to helicopter activities.	300 feet of areas where helicopters will be used for construction.	During construction.	No helicopters will be used during NTP #1 activities
38	Mitigation Measure NOI-1a	CPUC - PTC	Noise and Vibration	Adherence to City of Eureka Construction Hour Restrictions. Construction activities within the City of Eureka shall be restricted to the daytime hours between 7:00 a.m. and 7:00 p.m., except as allowed pursuant to Mitigation Measure NOI-1b.	During construction.	All Work Locations	During construction.	PG&E will implement during NTP#1 activities

Sort Order	APM or MM	Permit	Resource	Measure Text (Text may be split into row with specific action, or if text is not able to be clearly divided, text may be included once in its entirety and note made for subsequent phases/actions.)	Timing	Location(s)	Phase	NTP #1
39	Mitigation Measure NOI-1b	CPUC - PTC	Noise and Vibration	<p>Nighttime Construction. In the event construction would be required to occur outside the hours specified in Mitigation Measure NOI-1a and within 500 feet of sensitive receptors, PG&amp;E and/or its contractors shall implement the following measures to reduce any potential nighttime noise impacts.</p> <ul style="list-style-type: none"> <li>• Plan construction activities to minimize the amount of nighttime construction.</li> <li>• When nighttime construction activities take place within 200 feet of noise sensitive receptors, use portable construction noise barriers, such as paneled noise shields, barriers, enclosures, or sound curtains adjacent to or around loud stationary equipment. Noise control shields shall be made featuring a solid panel and a weather-protected, sound-absorptive material on the construction-activity side of the noise shield.</li> <li>• Offer temporary relocation of residents within 200 feet of nighttime construction activities that would occur after 10:00 p.m.</li> <li>• The notification requirements in APM NOI-2 shall be extended to include residences within 500 feet of planned nighttime construction activities. All residents within 500 feet of the proposed nighttime construction site(s) shall be notified at least 7 days in advance by mail, personal visit, door hanger, or e-mail and informed of the expected work schedule.</li> </ul>	Prior to construction.	500 feet of planned nighttime construction activities.	During construction.	No nighttime work will occur during NTP #1
40	Mitigation Measure NOI-1c	CPUC - PTC	Noise and Vibration	<p>Construction Noise Management. PG&amp;E and/or its contractors shall implement the measures identified below to ensure that construction noise levels are reduced to 90 dBA Leq or less at sensitive receptors located within 100 feet.</p> <ol style="list-style-type: none"> <li>1. Comply with manufacturer's muffler requirements on all construction equipment engines and ensure exhaust mufflers are in good condition;</li> <li>2. Turn off construction equipment when not in use, where applicable;</li> <li>3. Locate stationary equipment, construction staging areas, helicopter landing zones, and construction material areas as far as practical from sensitive receptors;</li> <li>4. Include noise control requirements for construction equipment and tools in specifications provided to construction contractors to the maximum extent practicable, including performing all work in a manner that minimizes noise; using equipment with effective mufflers; undertaking the noisiest activities during times of least disturbance to surrounding residents and occupants; and selecting haul routes that avoid residential areas;</li> <li>5. PG&amp;E shall provide notice by mail at least 1 week prior to construction activities to all sensitive receptors and residences within 500 feet of construction sites, staging yards, and access roads, and within 1,000 feet of helicopter landing zones and flight paths. PG&amp;E shall also post notices in public areas, including recreational use areas, within 500 feet of the Project alignment and construction work areas. The announcement shall state approximately where and when construction will occur in the area. For areas that would be exposed to helicopter noise, the announcement shall provide approximate details on the schedule of the dates, times, and duration of helicopter activities. Notices shall provide tips on reducing noise intrusion, for example, by closing windows facing the planned construction. PG&amp;E shall identify and provide a public liaison before and during construction to respond to concerns of neighboring receptors, including residents, about construction noise disturbance. PG&amp;E shall also establish a toll-free telephone number for receiving questions or complaints during construction and develop procedures for responding to callers. Procedures for reaching the public liaison officer via telephone or in person shall be included in the above notices and also posted conspicuously at the construction site(s). PG&amp;E shall address all complaints within 1 week of when the complaint is filed. PG&amp;E shall provide monthly reports with records of complaints and responses to the CPUC. These reports shall be provided to the CPUC within 15 days of the end of the month.</li> <li>6. When construction activities take place within 100 feet of noise sensitive areas, use portable construction noise barriers such as paneled noise shields, barriers, or enclosures, or sound curtains adjacent to or around loud stationary equipment. Noise control shields shall be made featuring a solid panel and a weather-protected, soundabsorptive material on the construction-activity side of the noise shield. Noise control shields with a minimum performance rating of STC-25 and Noise Reduction Coefficient (NRC) of 0.75 are capable of attenuating noise levels by up to 15 dBA.</li> <li>7. Route all construction traffic via designated truck routes where possible and prohibit construction related heavy truck traffic in residential areas where feasible.</li> </ol>	Prior to construction.	500 feet of the Project alignment and construction work areas.	Prior to construction.	Not applicable to NTP #1 (vegetation removal)
41	APM REC-1	CPUC - PTC	Recreation	<p>Coordination and Signage. PG&amp;E will coordinate with the operators of the Redwood Fields Ballpark, Redwood Acres Fairgrounds, and McKay Community Forest during project construction activities to minimize any potential construction impacts from the project. Signage notifying of construction activities will be posted at these recreational facilities at least one week in advance of construction.</p>	Signage to be posted at least one week prior to construction.	All Work Locations	During construction.	PG&E will implement during NTP#1 activities

Sort Order	APM or MM	Permit	Resource	Measure Text (Text may be split into row with specific action, or if text is not able to be clearly divided, text may be included once in its entirety and note made for subsequent phases/actions.)	Timing	Location(s)	Phase	NTP #1
42	APM TT-1	CPUC - PTC	Transportation	Temporary Traffic Controls. PG&E will obtain necessary transportation encroachment permits from Caltrans and the local jurisdictions, as required, including those related to State Route crossings and the transport of oversized loads and certain materials, and will comply with permit requirements designed to prevent excessive congestion or traffic hazards during construction. PG&E will develop road and lane closures or width reduction or traffic diversion plans as required by the encroachment permits. Construction activities that are in, along, or cross local roadways will follow best management practices and local jurisdictional encroachment permit requirements, which may include traffic controls such as signs, cones, and flaggers to minimize impacts on traffic and transportation in the Project area. PG&E will coordinate with ETS regarding the schedule and scope of construction activities that could interfere with bus routes crossed by the Project alignment and will coordinate temporary relocation of bus stops if necessary.	Prior to applicable phases of construction involving traffic control.	Work areas within Caltrans ROW.	During construction.	PG&E will implement during NTP #1
43	APM TT-2	CPUC - PTC	Hazards and Hazardous Materials	Air Traffic Control. PG&E will implement the following protocols related to helicopter use: <ul style="list-style-type: none"> <li>PG&amp;E will comply with all applicable FAA regulations regarding air traffic;</li> <li>PG&amp;E will prepare a Helicopter Use Plan;</li> <li>Helicopter operators will coordinate all project helicopter operations with local airports before and during project construction; and</li> <li>PG&amp;E will comply with FAA requirements for helicopter activities in residential areas that will reduce safety risks, an if necessary coordinate with residents that may need to temporarily evacuate their properties.</li> </ul>	Prior to and during construction.	Project specific flight path and landing locations.	Prior to construction.	No helicopters will be used during NTP #1 activities
44	APM TT-3	CPUC - PTC	Transportation	Coordination Road Closures with Emergency Service Providers and School Districts. At least 24 hours prior to implementing any road or lane closure, PG&E will coordinate with applicable emergency service providers and school districts in the Project vicinity. PG&E will provide information regarding the road or lanes to be closed, the anticipated date, time, and duration of closures, and a contact telephone number.	Construction. At least 24 hours prior to implementing any road or lane closures.	All Work Locations	During construction.	No road or lane closures will occur during NTP #1 activities
45	APM WF-1	CPUC - PTC	Wildfire	Smoking and Fire Rules. Smoking will not be permitted on site, except in barren areas that measures a minimum of 20 feet in diameter and are cleared to mineral soil. Under no circumstances will smoking be permitted during the fire season (approximately July through October) while employees are operating equipment, or while walking or working in grass and woodlands.	During all phases of construction and operation of the project.	All Work Locations	During construction.	PG&E will implement during NTP#1 activities
46	APM WF-2	CPUC - PTC	Wildfire	Carry Emergency Fire Suppression Equipment. PG&E construction crew trucks and large equipment shall have, at a minimum, a standard roundpoint shovel and a fire extinguisher. If construction activities likely to cause sparks (e.g., welding, grinding, or grading in rocky terrain) are conducted, emergency fire tool boxes shall be readily available to crews. The emergency fire tool boxes shall contain fire-fighting items such as shovels, axes, and water.	During construction and operation of the project.	All Work Locations	During construction.	PG&E will implement during NTP#1 activities
47	APM WF-3	CPUC - PTC	Wildfire	Construction Fire Prevention Plan. PG&E shall prepare a Construction Fire Prevention Plan consistent with the measures identified in APM HAZ-3, Fire Risk Management, that addresses procedures for fire prevention at active construction sites. The Construction Fire Prevention Plan shall include requirements for carrying emergency fire suppression equipment, conducting "tailgate meetings" that cover fire safety discussions, restricting smoking, idling vehicles, and restricting construction during red flag warnings. The Construction Fire Prevention Plan shall address the following fire risk reduction measures: <ul style="list-style-type: none"> <li>Training and briefing all personnel working on the project in fire prevention and suppression methods.</li> <li>Conducting a fire prevention discussion at each morning's safety meeting.</li> <li>Storage of prescribed fire tools and backpack pumps with water within 50 feet of work activities.</li> <li>Assigning personnel to conduct a "fire watch" or "fire patrol" to ensure that risk mitigation and fire preparedness measures are implemented, immediate detection of a fire, and to coordinate with emergency response personnel in the event of a fire.</li> </ul> The Construction Fire Prevention Plan will be submitted to the CPUC for review at least 30 days prior to construction.	Plan shall be prepared and submitted to the CPUC for review at least 30-days prior to construction.	All Work Locations	Prior to construction.	PG&E will implement during NTP#1 activities

Special Condition	Permit	Resource	Measure Text (Text may be split into row with specific action, or if text is not able to be clearly divided, text may be included once in its entirety and note made for subsequent phases/actions.)	Timing	Location(s)	Phase	NTP #1
1	CCC - CDP	Incorporation of CPUC MMCRP	This permit incorporates those mitigation measures identified in Table 5-1 of the February 2020 Initial Study/MND Checklist concerning biological resources, cultural resources, and paleontological resources that are attached to this report as Exhibit 4. Copies of monitoring reports for biological surveys, cultural resources, and paleontological resources shall be provided to the Executive Director.	During construction.	During all phases of construction and operation of the project.	During construction	Monitoring reports for work conducted under NTP #1 will be submitted to the Executive Director.
2	CCC - CDP	Other permits and approvals	PRIOR TO THE COMMENCEMENT OF PROJECT ACTIVITIES, the Permittee shall provide to the Executive Director copies of all other local, state, and federal permits and authorizations required to perform project-related work, or evidence that no permits are required. These permits and approvals include: a. CPUC: GO-131-D Permit to construct and CEQA review/approval (granted 11/19/2020) b. U.S. Army Corps of Engineers: Section 402 NPDES General Construction Stormwater Permit, Section 404 Nationwide Permit (NWP) 12 and Section 10 Rivers and Harbors Act Permit. c. North Coast Regional Water Quality Control Board: section 401 Water Quality Certification.	Prior to construction.	Work locations in Coastal Zone.	Prior to construction.	Completed July 20, 2021
3	CCC - CDP	Spill Prevention and Response Plan	PRIOR TO THE COMMENCEMENT OF PROJECT ACTIVITIES, the Permittee shall submit a project-specific Spill Prevention and Response Plan to the Executive Director for review and approval. The Plan shall identify the worst-case spill scenario and demonstrate that adequate spill response equipment will be available. The Plan shall also include a detailed description of all preventative measures the Permittee will implement to avoid spills and clearly identify responsibilities of Permittee personnel and any contractors employed, and shall list and identify the location of oil spill response equipment and appropriate protocols and response times for deployment. Vehicles and heavy equipment left at laydown area during non-work hours shall have drip pans or other means of collecting dripped fuel, lubricants or other hazardous materials, which shall be collected and disposed of off-site. Contracts with off-site spill response companies shall be in-place and shall provide additional containment and clean-up resources as needed.	Prior to construction.	Work locations in Coastal Zone.	Prior to construction.	Submitted to Executive Director on July 22, 2021 for review and approval.
4	CCC - CDP	Helicopter Use Plan	PRIOR TO THE COMMENCEMENT OF PROJECT ACTIVITIES, the Permittee shall submit a project specific Helicopter Use Plan to the Executive Director for review and approval. The plan shall comply with applicable FAA regulations, and include time of day limitations, duration, approved take-off and landing locations, type of helicopter, notification of sensitive receptors to helicopter use, include appropriate raptor buffers and decision-making criteria, and include information about coordination with local airports before and during construction.	Prior to construction.	Work locations in Coastal Zone.	Prior to construction.	Not applicable to NTP #1; no helicopter work.

5	CCC - CDP	Mitigation for Impacts to Wetlands and Biological Resources	<p>The Permittee shall mitigate the project's permanent wetland impacts through application of credits from the existing Palco Marsh wetland enhancement site, as described in the April 2020 correspondence from PG&amp;E (Exhibit 7). The Permittee shall mitigate impacts from permanent removal of 17 trees at a 2:1 mitigation to impact ratio by applying 34 tree mitigation credits at the Cock Robin Island site. The Permittee shall provide annual reports for both sites for a minimum of five years that includes monitoring results for absolute vegetation cover, native plant cover, non-native plant cover and species richness and assesses whether the mitigation site is meeting applicable performance criteria. If monitoring result show performance criteria are not being met, the Permittee shall identify and implement remedial measures. If monitoring results show that performance criteria have not been met for two consecutive years, the Permittee shall submit an application to amend this permit with alternative mitigation, unless the Executive Director determines that a permit amendment it not necessary.</p> <p>To address temporary impacts to wetlands and vegetation communities including the Lyngbye's Sedge, the Permittee shall implement the pre-construction and performance monitoring measures that are described in Exhibits 4, 5, and 7. After one year of monitoring, the Permittee shall provide the Executive Director with a monitoring report, identifying areas of wetland, Lyngbye's Sedge or vegetation communities habitat that have and have not met the following performance standards:</p> <p>a. Total vegetative cover and species richness have returned to preconstruction conditions.  b. Relative cover must return to 90% of baseline for non-woody vegetation, and 85% of baseline for woody vegetation. If monitoring of the adjacent sensitive habitats that were not impacted by construction documents an overall change to the sensitive habitat has occurred due to non-Project related factors (e.g., drought), then performance standards may be modified accordingly. For example, if total vegetative cover in adjacent plots has decreased by 10% from the baseline conditions (i.e., from 60% pre-construction to 50% cover during the monitoring period), then the performance standard for total vegetative cover in the monitoring site[s] may be similarly reduced.  c. Invasive plant cover does not exceed the invasive plant cover documented pre-construction.</p> <p>If monitoring results show that temporary impacts have not been fully restored within one year, the Permittee shall submit an application for an amendment to this permit that proposes mitigation for remaining wetland impacts at a 4:1 mitigation to impact ratio and impacts to Lyngbye's sedge at a 3:1 mitigation to impact ratio.</p>	At the conclusion of construction.	Work locations in Coastal Zone.	Lyngbe sedge requirements during construction.  Mitigation implemented post construction.	No vegetation removal at known locations of Lyngbe sedge. Will implement Exhibits 5, 6, and 7 if pre-construction survey identifies Lyngbe sedge where vegetation is to be removed.
---	-----------	---	--	------------------------------------	---------------------------------	---	---

Special Condition	Permit	Resource	Measure Text	Timing	Location(s)	Phase	NTP #1
1	NWP 12	Biological	Incidents where any individuals of California Coastal Chinook salmon ( <i>Oncorhynchus tshawytscha</i> ), Southern Oregon/Northern California Coast coho salmon ( <i>O. kisutch</i> ), and Northern California Coast steelhead ( <i>O. mykiss</i> ) listed by NOAA Fisheries under the Endangered Species Act appear to be injured or killed as a result of discharges of dredged or fill material into waters of the United States or structures or work in navigable waters of the United States authorized by this NWP shall be reported to NOAA Fisheries, Office of Protected Resources, at (301) 713-1401 and the Regulatory Office of the San Francisco District of the U.S. Army Corps of Engineers at (415) 503-6795. The finder should leave the plant or animal alone, make note of any circumstances likely causing the death or injury, note the location and number of individuals involved, and, if possible, take photographs. Adult animals should not be disturbed unless circumstances arise where they are obviously injured or killed by discharge exposure or some unnatural cause. The finder may be asked to carry out instructions provided by NOAA Fisheries, Office of Protected Resources, to collect specimens or take other measures to ensure that evidence intrinsic to the specimen is preserved.	During construction.	Wates of the U.S.	During construction.	Not applicable to NTP 1; no in-water work or ground-disturbing work.
2	NWP 12	Biological	The USFWS and NMFS concurred with the determination that the project may affect but is not likely to adversely affect Marbled murrelet ( <i>Brachyramphus marmoratus</i> ), northern spotted owl ( <i>Strix occidentalis caurina</i> ), tidewater goby ( <i>Eucyclogobius newberryi</i> ) and California Coastal Chinook salmon ( <i>Oncorhynchus tshawytscha</i> ), Southern Oregon/Northern California Coast coho salmon ( <i>O. kisutch</i> ), and Northern California Coast steelhead ( <i>O. mykiss</i> ) and the designated critical habitat for these species. This concurrence was premised, in part, on project work restrictions and the description of the proposed action outlined in enclosures 5 and 6, respectively. These work restrictions are incorporated as special conditions to the NWP authorization for your project to ensure unauthorized incidental take of species and loss of critical habitat does not occur.	During construction.	Entire project.	During construction.	Enclosures 5 and 6 are the BAs for USFWS and NMFS. They have the same measures as the PTC MMCRP.
3	NWP 12	Cultural	To minimize potential impacts to eligible historic properties within the vicinity of the project site, the permittee shall flag and avoid the artifact concentration (Spiegelberg Homestead) as a precautionary measure and the area around the Spiegelberg Homestead will only be utilized for construction access and a landing zone. No earthwork or excavation is permitted to occur in this location. Installation of poles and access road modification is not permitted. These work restrictions are incorporated as special conditions to the NWP authorization for your project to ensure unauthorized impacts to potential historic properties does not occur.	During construction.	Spiegelberg Homestead	During construction.	Not applicable to NTP 1; no work occurring near this location.
4	NWP 12	Wetlands and waters	You shall notify the Corps in writing of the anticipated start and stop dates of construction, at least 5 days prior to the initiation of construction.	At least 5 days prior to construction.	Work in wetlands.	Prior to construction.	Not applicable to NTP 1; no work (fill) within wetlands.
5	NWP 12	Wetlands and waters	You shall implement the October 21, 2020, Habitat Restoration Plan for the PG&E Humboldt Bay-Humboldt #1 60kV Reconductoring Project and document that all temporarily impacted wetlands and other waters of the U.S. have been restored.	Post construction.	Work in wetlands.	Post construction.	Not applicable to NTP 1; no work (fill) within wetlands.
6	NWP 12	Wetlands and waters	Your responsibility to complete the required restoration as set forth in Special Condition 5 will not be considered fulfilled until you have demonstrated met the performance standards and have received written verification from the U.S. Army Corps of Engineers.	Post construction.	Work in wetlands.	Post construction.	Not applicable to NTP 1; no work (fill) within wetlands.



Condition	Condition Type	Permit	Measure Text	Timing	Location(s)	Phase	NTP #1
1	Project-Specific	RWQCB 401	PG&E shall implement the Habitat Restoration Plan for the PG&E Humboldt Bay-Humboldt #1 60 kV Reconductoring Project (HRP), dated October 21, 2020, or any successive document approved by Regional Water Board staff. Monitoring reports shall be submitted annually to the Regional Water Board. The reports shall be submitted to the following email address: NorthCoast@waterboards.ca.gov. (CA Water Code section 13267, CCR Title 23 section 3013). These annual monitoring reports shall be submitted no later than January 31 following project construction completion. Changes to the monitoring report deadlines are subject to prior review and approval of Regional Water Board staff. Revegetation in impacted areas must meet 85% survivorship and not be reliant on supplemental irrigation for the final two years of the monitoring period in order to be deemed successful. (CCR Title 23 section 3013, section 3861(d), Dredge or Fill Procedures section IV. A.2(d) & B.4). Post-project monitoring reports shall include the following information: i. A summary of findings including the condition and survivorship of revegetation, and whether the success criteria is being met; ii. Photographic evidence that confirms survivorship of riparian plantings; and	Post construction.	Project wetlands and mitigation site.	Post construction.	Not applicable to NTP 1: post construction.
2	Project-Specific	RWQCB 401	Mitigation success shall be subject to the review and acceptance by Regional Water Board staff. Plants shall not be considered successful until irrigation has been terminated and plants are self-sustaining for a minimum of two years. (CCR Title 23 section 3013)	Post construction.	Project wetlands and mitigation site.	Post construction.	Not applicable to NTP 1: post construction.
3	Project-Specific	RWQCB 401	Work within State waters shall occur only between June 15 and October 15. Any deviation from this timeframe restriction shall be subject to prior approval by Regional Water Board staff.	During construction.	State waters.	During construction.	Vegetation removal in wetland locations to be complete by October 15.
4	Project-Specific	RWQCB 401	The Regional Water Board shall be notified in writing (e-mail is acceptable) at least five working days prior to commencement of ground disturbing activities for each construction season. (CA Water Code section 13267)	Five days prior to construction.	Project wetlands and mitigation site.	Prior to construction.	Not applicable to NTP 1: no ground disturbance.
5	Standard Condition	RWQCB 401	This certification action is subject to modification or revocation upon administrative or judicial review, including review and amendment pursuant to Water Code section 13330 and title 23, California Code of Regulations, section 3867.	Project duration.	State waters.	During construction.	No action.
6	Standard Condition	RWQCB 401	This certification action is not intended and shall not be construed to apply to any discharge from any activity involving a hydroelectric facility requiring a Federal Energy Regulatory Commission (FERC) license or an amendment to a FERC license unless the pertinent certification application was filed pursuant to title 23, California Code of Regulations, section 3855, subdivision (b) and the application specifically identified that a FERC license or amendment to a FERC license for a hydroelectric facility was being sought.	Project duration.	State waters.	During construction.	No action.
7	Standard Condition	RWQCB 401	The validity of this certification is conditioned upon total payment of any fee required under title 23, California Code of Regulations, section 3833, and owed by the applicant.	Project duration.	State waters.	During construction.	No action.
8	Standard Condition	RWQCB 401	An application fee of \$1,949.00, was submitted to the Regional Water Board on February 26, 2020. The remaining Project fee was received on 3/2/2020. This Certification will be subject to annual billing while the project is constructed and monitored, per the fee schedule that is current at the time of annual billing. Currently the annual fee is \$1,736; the annual fee is expected to increase every year. The fee calculator may be found on the State Water Board website at: <a href="https://www.waterboards.ca.gov/resources/fees/water_quality/docs/dredgefillcalculator.xlsm">https://www.waterboards.ca.gov/resources/fees/water_quality/docs/dredgefillcalculator.xlsm</a> Annual fees will be automatically invoiced to the Applicant. The applicant must notify the Regional Water Board at project and/or mitigation completion with a final report in order to request to terminate annual billing. Notification should be sent to the staff listed at the bottom of this Order and to Northcoast@waterboards.ca.gov. Regional Water Board staff will verify conditions of the Certification have been met and may request a site visit at that time to confirm status of Project and compliance with this Certification. (CCR Title 23, sections 3833(b)(3) and 2200(a)(3), CA Water Code section 13267(c))	Project duration.	State waters.	During construction.	No action.
9	Standard Condition	RWQCB 401	This certification does not authorize drafting of surface waters. Any drafting of surface waters shall be in compliance with state water rights law and diversion requirements overseen by the State Water Resources Control Board's Division of Water Rights.	Project duration.	State waters.	During construction.	No action.
10	Standard Condition	RWQCB 401	Only wildlife-friendly, 100 percent biodegradable erosion and sediment control products that will not entrap or harm wildlife shall be used. Erosion and sediment control products shall not contain synthetic (e.g., plastic or nylon) netting. Photodegradable synthetic products are not considered biodegradable. The applicant shall request approval from the Regional Water Board if an exception from this requirement is needed for a specific location. (Water Quality Control Plan for the North Coast Region, Section 4.2.1, State Board Resolution No. 68-16)	Project duration.	State waters.	During construction.	No action.

11	Standard Condition	RWQCB 401	Best management practices (BMPs) shall be implemented according to the submitted application and the conditions in this certification. BMPs for erosion, sediment, and turbidity control shall be implemented and in place at commencement of, during, and after any ground clearing activities or any other project activities that could result in erosion or sediment discharges to surface water. BMPs shall always be immediately available for deployment to prevent discharges to waters of the state. (State Board Resolution No. 68-16, 40 CFR Part 131.12 (a)(1), CA Water Code section 13369, CCR section 3861(d)(2))	Project duration.	State waters.	During construction.	No action.
12	Standard Condition	RWQCB 401	The applicant is prohibited from discharging waste to waters of the state, unless explicitly authorized by this certification. For example, no debris, soil, silt, sand, bar, slash, sawdust, cement or concrete washings, oil or petroleum products, or other organic or earthen material from any construction or associated activity of whatever nature, other than that authorized by this Certification, shall be allowed to enter into or be placed where it may be washed by rainfall into waters of the state. When operations are completed, any excess material or debris shall be removed from the work area. (Water Quality Control Plan for the North Coast Region, section 4.2.1)	Project duration.	State waters.	During construction.	No action.
13	Standard Condition	RWQCB 401	The Applicant shall provide Regional Water Board staff access to the project site to document compliance with this certification. (CA Water Code section 13267(c))	Project duration.	State waters.	During construction.	No action.
14	Standard Condition	RWQCB 401	If, at any time, an unauthorized discharge to surface water (including wetlands, lakes, rivers, or streams) occurs, or any water quality problem arises, the associated project activities shall cease immediately until adequate BMPs are implemented including stopping work. The Regional Water Board shall be notified promptly and in no case more than 24 hours after the unauthorized discharge or water quality problem arises. (CA Water Code sections 13170 or 13245 and 13271)	Within 24 hours of unauthorized discharge.	State waters.	During construction.	No action.
15	Standard Condition	RWQCB 401	Prior to implementing any change to the project that may be a material change as defined in California Water Code section 13260(c) as a proposed change in character, location, or volume of the discharge, the applicant shall obtain prior written approval of the Regional Water Board Executive Officer. If the Regional Water Board is not notified of the material change to the discharge, it will be considered a violation of this certification, and the applicant may be subject to Regional Water Board enforcement action(s). (CA	Project duration.	State waters.	During construction.	No action.
16	Standard Condition	RWQCB 401	All Project activities shall be implemented as described in the submitted certification application package and the findings and conditions of this certification. Subsequent Project changes that could significantly impact water quality shall first be submitted to Regional Water Board staff for prior review, consideration, and written concurrence. If the Regional Water Board is not notified of a significant alteration to the Project, it will be considered a violation of this certification, and the Applicant may be subject to Regional Water Board enforcement actions. (CA Water Code section 13264)	Project duration.	State waters.	During construction.	No action.
17	Standard Condition	RWQCB 401	The applicant shall provide a copy of this certification and State Water Board Order 2003-0017-DWQ to any contractor(s), subcontractor(s), and utility company(ies) conducting work on the project and shall require that copies remain in their possession at the work site. The applicant shall be responsible for ensuring that all work conducted by its contractor(s), subcontractor(s), and utility companies is performed in accordance with the information provided by the applicant to the Regional Water Board. (CA Water Code	Project duration.	State waters.	During construction.	A copy of the 401 certification will be maintained onsite.
18	Standard Condition	RWQCB 401	Fueling, lubrication, maintenance, storage, and staging of vehicles and equipment shall not result in a discharge or threatened discharge to any waters of the state including dry portions of wetlands. At no time shall the applicant or its contractors allow use of any vehicle or equipment that leaks any substance that may impact water quality. (State Board Resolution No. 68-16, 40 CFR Part 131.12 (a)(1), Water Code section 13369, Water Quality Control Plan for the North Coast Region, section 3.3.16)	Project duration.	State waters.	During construction.	No action.
19	Standard Condition	RWQCB 401	The Applicant shall not use leaking vehicles or equipment within state waters or riparian areas. Vehicles and equipment used within state waters shall be checked for leaks at the beginning of each workday. (State Board Resolution No. 68-16, 40 CFR Part 131.12 (a)(1), CA Water Code section 13369, Water Quality Control Plan for the North Coast Region, section 3.3.16)	Project duration.	State waters.	During construction.	No action.
20	Standard Condition	RWQCB 401	In the event of any violation or threatened violation of the conditions of this Certification, the violation or threatened violation shall be subject to any remedies, penalties, process or sanctions as provided for under applicable state or federal law. For the purposes of section 401 (d) of the Clean Water Act, the applicability of any state law authorizing remedies, penalties, process or sanctions for the violation or threatened violation constitutes a limitation necessary to assure compliance with the water quality standards and other pertinent requirements incorporated into this Certification. In response to a suspected violation of any condition of this certification, the Regional Water Board may require the holder of any federal permit or license subject to this Certification to furnish, under penalty of perjury, any technical or monitoring reports the Regional Water Board deems appropriate, provided that the burden, including costs, of the reports shall bear a reasonable relationship to the need for the reports and the benefits to be obtained from the reports. In response to any violation of the conditions of this Certification, the Regional Water Board may add to or modify the conditions of this Certification as appropriate to ensure compliance pursuant to Section 13267 of the Porter-Cologne Water Quality Control Act. (CA Water Code sections 13385, 13267)	Project duration.	State waters.	During construction.	No action.
21	Standard Condition	RWQCB 401	The Regional Water Board may add to or modify the conditions of this Certification, as appropriate, to implement any new or revised water quality standards and implementation plans adopted and approved pursuant to the Porter-Cologne Water Quality Control Act or section 303 of the Clean Water Act. (CA Water Code section 13330, and CCR title 23 chapter 28, Article 6 commencing with section 3867)	Project duration.	State waters.	During construction.	No action.

22	Standard Condition	RWQCB 401	<p>In the event of any change in control of ownership of land presently owned or controlled by the applicant, the applicant shall notify the successor-in-interest of the existence of this certification by letter and shall email a copy of the letter to the Regional Water Board at the following email address: NorthCoast@waterboards.ca.gov. (CA Water Code section 13264)                  The successor-in-interest shall email the Regional Water Board Executive Officer at: NorthCoast@waterboards.ca.gov to request authorization to discharge dredged or fill material under this certification. The request must contain the following:</p> <ul style="list-style-type: none"> <li>i) Effective date of ownership change;</li> <li>ii) Requesting entity's full legal name;</li> <li>iii) The state of incorporation, if a corporation;</li> <li>iv) The address and phone number of contact person; and</li> <li>v) A description of any changes to the Project or confirmation that the successor-in-interest intends to implement the project as described in this certification.</li> </ul>	Project duration.	State waters.	During construction.	No action.
23	Standard Condition	RWQCB 401	<p>Except as may be modified by any preceding conditions, all certification actions are contingent on:</p> <ul style="list-style-type: none"> <li>i) The discharge being limited to and all proposed mitigation being completed in strict compliance with the Applicant's Project description and CEQA documentation, as approved herein (CA Water Code section 13264); and</li> <li>ii) Compliance with all applicable water quality requirements and water quality control plans including the requirements of the Water Quality Control Plan for the North Coast Region (Basin Plan), and amendments thereto. (Water Quality Control Plan for the North Coast Region)</li> </ul>	Project duration.	State waters.	During construction.	No action.
24	Standard Condition	RWQCB 401	<p>The authorization of this certification for any dredge and fill activities expires on February 19, 2026. Conditions and monitoring requirements outlined in this Certification are not subject to the expiration date outlined above, and remain in full effect and are enforceable to ensure compliance with water quality objectives adopted or approved under Sections 13170 or 13245 of the CA Water Code.</p>	Project duration.	State waters.	During construction.	No action.