

**PUBLIC UTILITIES COMMISSION  
505 VAN NESS AVENUE  
SAN FRANCISCO, CA 94102-3298**



**To: State Clearinghouse, Responsible and Trustee Agencies, Property Owners  
& Interested Parties**

**From: Mr. Tommy Alexander, CPUC Project Manager**

**Subject: NOTICE OF INTENT TO ADOPT AN INITIAL STUDY/MITIGATED NEGATIVE  
DECLARATION (IS/MND)  
Pacific Gas & Electric Company Plainfield Substation Upgrade Project (A-24-06-008)**

**Date: April 9, 2025**

The California Public Utilities Commission (CPUC) has prepared a Draft Initial Study/Mitigated Negative Declaration (Draft IS/MND) under the California Environmental Quality Act (CEQA) for consideration of Pacific Gas & Electric Company's (PG&E's) application (A-24-06-008) to construct, operate, and maintain the Plainfield Substation Upgrade Project (the Project). The Draft IS/MND details the Project; evaluates and describes the potential environmental impacts associated with the Project's construction, operation, and maintenance; identifies impacts that could be significant; and presents mitigation measures that, if adopted by the CPUC, would avoid or minimize these impacts.

### **Description of the Project**

PG&E proposes to expand the existing Plainfield Substation to improve energy transmission reliability by addressing low-voltage concerns and overload conditions. The Plainfield Substation is located in unincorporated Yolo County, midway between the cities of Woodland and Davis, approximately 1.5 west of California State Route 113 (see attached figure). It serves approximately 58,000 residences and businesses, including commercial agricultural operations. The Project would be on, and surrounded by, agricultural lands. Currently, the existing substation is equipped with two transformers, rated at 60/12 kilovolt (kV) 7.5 megavolt amperes (MVA) and 115x60/12 kV 30 MVA, respectively. The substation expansion consists of installing two new 5-megavolt ampere reactive power (MVAR) shunt capacitor banks and related equipment and project components that would boost the voltage of the 60 kV lines to acceptable levels.

Project components include:

- Upgrades to the existing 60 kV bus.
- Installation of two new shunt capacitor banks.
- Modifications to the existing Spill Prevention, Control, and Countermeasure containment system.
- Installation of a stormwater retention pond.
- Installation of a new station battery enclosure and a new, larger modular protection automation and control enclosure.
- Replacement and installation of tubular steel poles and all-aluminum conductor power lines.
- New fencing, lighting, and access road improvements.

**Public Comment on the Draft IS/MND.**

The Draft IS/MND is available for a 30-day public comment period: **April 9, 2025, through May 9, 2025**. The public may submit written comments and concerns regarding the Project and the adequacy of the Draft IS/MND. Comments on the Draft IS/MND must be postmarked or received by e-mail or voicemail no later than **May 9, 2025**, at 5:00 pm. Please include your name, address, and telephone number in your correspondence.

Written comments on the Draft IS/MND should be sent to:

**California Public Utilities Commission  
Attn. Plainfield Substation/Tommy Alexander  
505 Van Ness Avenue San Francisco, CA 94102  
[Plainfield@esassoc.com](mailto:Plainfield@esassoc.com)**

Comments may be emailed to [Plainfield@esassoc.com](mailto:Plainfield@esassoc.com), or by voicemail by calling (510) 463-6731.

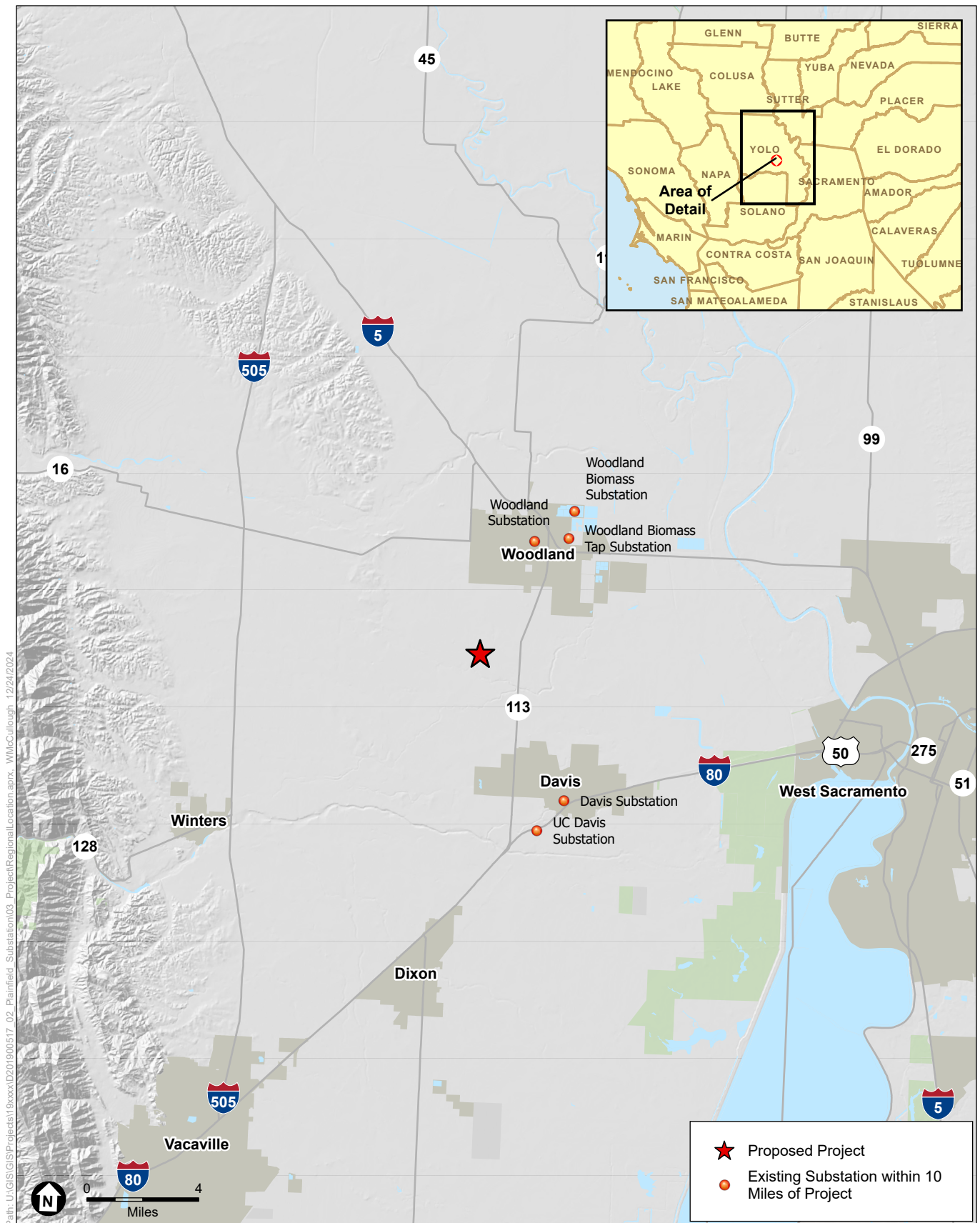
**Availability of Draft IS/MND.**

Copies of the Draft IS/MND will be available for public review on the CPUC's Project website:

<https://ia.cpuc.ca.gov/environment/info/esa/plainfield/index.html>

This website will be used to post all public documents during the environmental review process. Printed copies of the Draft IS/MND may be requested by e-mail at [Plainfield@esassoc.com](mailto:Plainfield@esassoc.com).

REMINDER: Draft IS/MND comments will be accepted by e-mail or regular mail postmarked through May 9th. Please include your name, address, and telephone number. Note that comments become public record.



SOURCE: ESRI, 2024

Plainfield Substation Upgrade Project

**Figure**  
Project Location