

PUBLIC UTILITIES COMMISSION

505 VAN NESS AVENUE
SAN FRANCISCO, CA 94102-3298



April 17, 2009

VIA MAIL AND EMAIL

Christine McLeod
Project Manager - Regulatory Affairs
Regulatory Policy & Affairs Dept.
Southern California Edison
2244 Walnut Grove Avenue, Quad 3D, 388L
Rosemead, CA 91770

SUBJECT: Data Request #2 for Presidential Substation Project

Dear Ms. McLeod:

As the California Public Utilities Commission (CPUC) proceeds with our environmental review for Southern California Edison (SCE)'s Presidential Substation Project, we have identified additional information required for our analysis of the Proposed Project and alternatives. We recognize that the technical nature of the attached request may take more time than the standard two-weeks; therefore, please provide a schedule for completion of the data request within two weeks. If you have any questions please direct them to me as soon as possible.

Sincerely,

A handwritten signature in blue ink that reads "Juralynne Mosley".

Juralynne Mosley
CPUC CEQA Project Manager
Energy Division

Phone: (415) 703-2210
JBM@cpuc.ca.gov

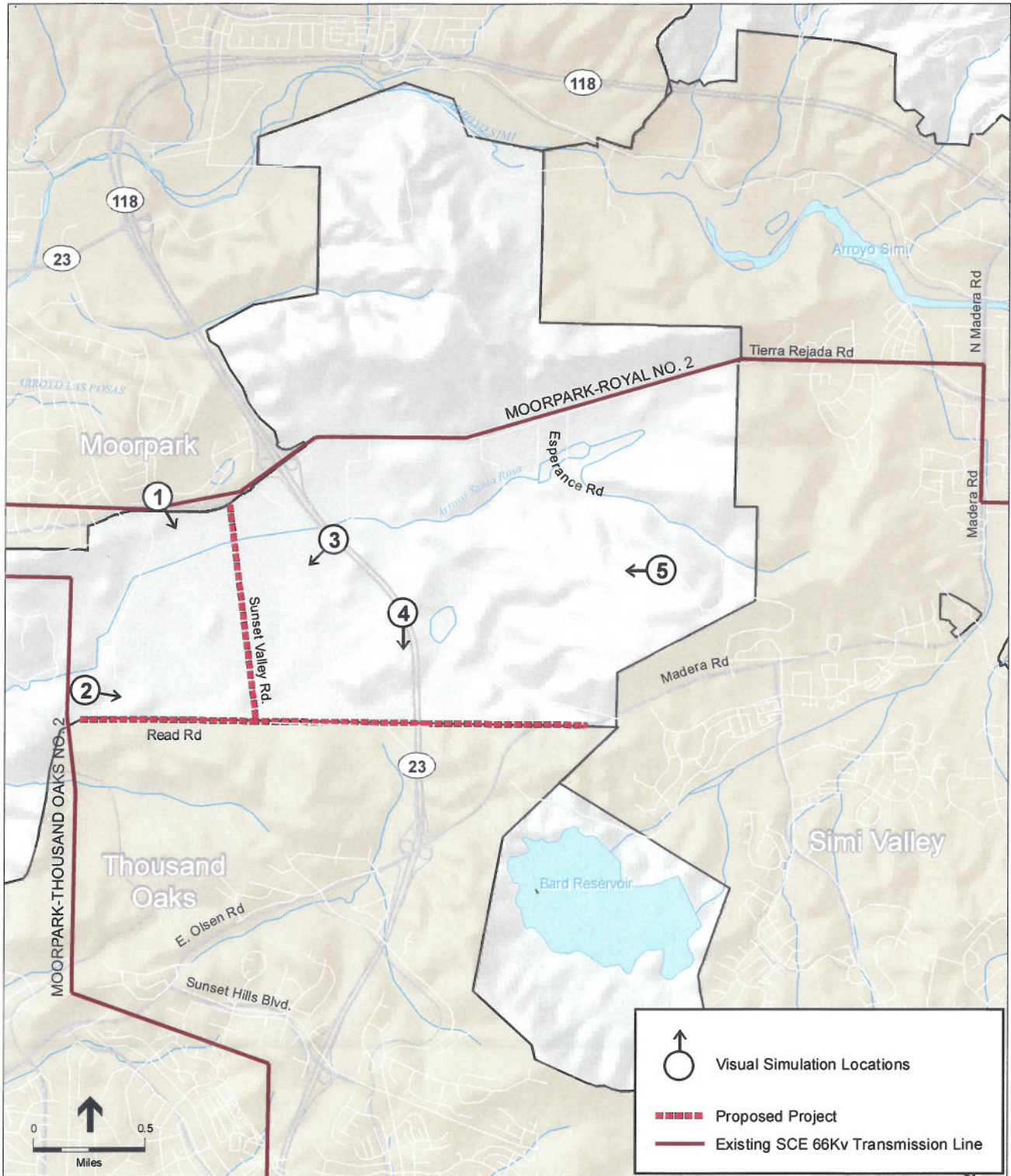
ESA
Attn: Michael Manka
1425 North McDowell Blvd.
Suite 105
Petaluma, CA 94954
mmanka@esassoc.com

Cc: Chloe Lukins, CPUC CEQA Unit Supervisor
Traci Bone, Advisor to Comm. Grueneich
Darryl Gruen, CPUC Legal Division
Janice Grau, CPUC ALJ

Data Request Presidential Substation Project

Visual Simulations

1. Please provide visual simulations of the Proposed Project subtransmission line from the points identified on the attached figure.
 - a. Photo point #1 –represents the intersection with the traffic light.
 - b. Photo point #2 – represents the area near the intersection of Moorpark Rd, and Read Road.
 - c. Photo point #3 – represents a photo taken from Hwy 23 showing the Tierra Rejada valley, with the proposed subtransmission line in view.
 - d. Photo point #4 – represents the view of where the subtransmission line will cross Hwy 23. The point selected is the point south of the turn where the crossing would come into view.
 - e. Photo point #5 – represents the view of the Proposed Project subtransmission line from the Reagan presidential library.
2. Please revise the PEA visual simulation of the Proposed Project substation with the following modifications.
 - a. The ground level of the PEA simulation does not appear consistent with the estimated 4-feet above street level grade discussed on the initial site visit. Please adjust the ground level of the substation as necessary or provide justification that the existing simulation is correct.
 - b. Screening – the existing PEA simulation appears to show very mature vegetation. Please provide a simulation depicting screening of the substation for the period immediately following construction (1-2 years) and a second visual simulation showing more mature screening.
 - c. Please include the anticipated acceleration, deceleration and driveway anticipated for the substation.



SOURCE: SCE, 2009

Residential Substation Project . 207584

Visual Simulation Locations