

---

# Presidential Substation Project

---

**California Public Utilities Commission  
Public Comment Meeting  
on the  
Draft Environmental Impact Report (DEIR)**

**October 13, 2011  
Thousand Oaks, CA**

# Participants and their Roles

---

- Lynne Mosley, CPUC Project Manager
  - Lead Agency under the California Environmental Quality Act (CEQA)
  
- Mike Manka, ESA Project Manager
  - Environmental Consultant for the CPUC
  
- Southern California Edison
  - Project Applicant
  
- Public Agencies
  
- Members of the Public

# Meeting Agenda

---

- CPUC Review and CEQA Process
- Project Overview
- Alternatives
- Summary of Environmental Impacts
- Next Steps
- Public Comment
  - Speaker cards
  - Comment forms

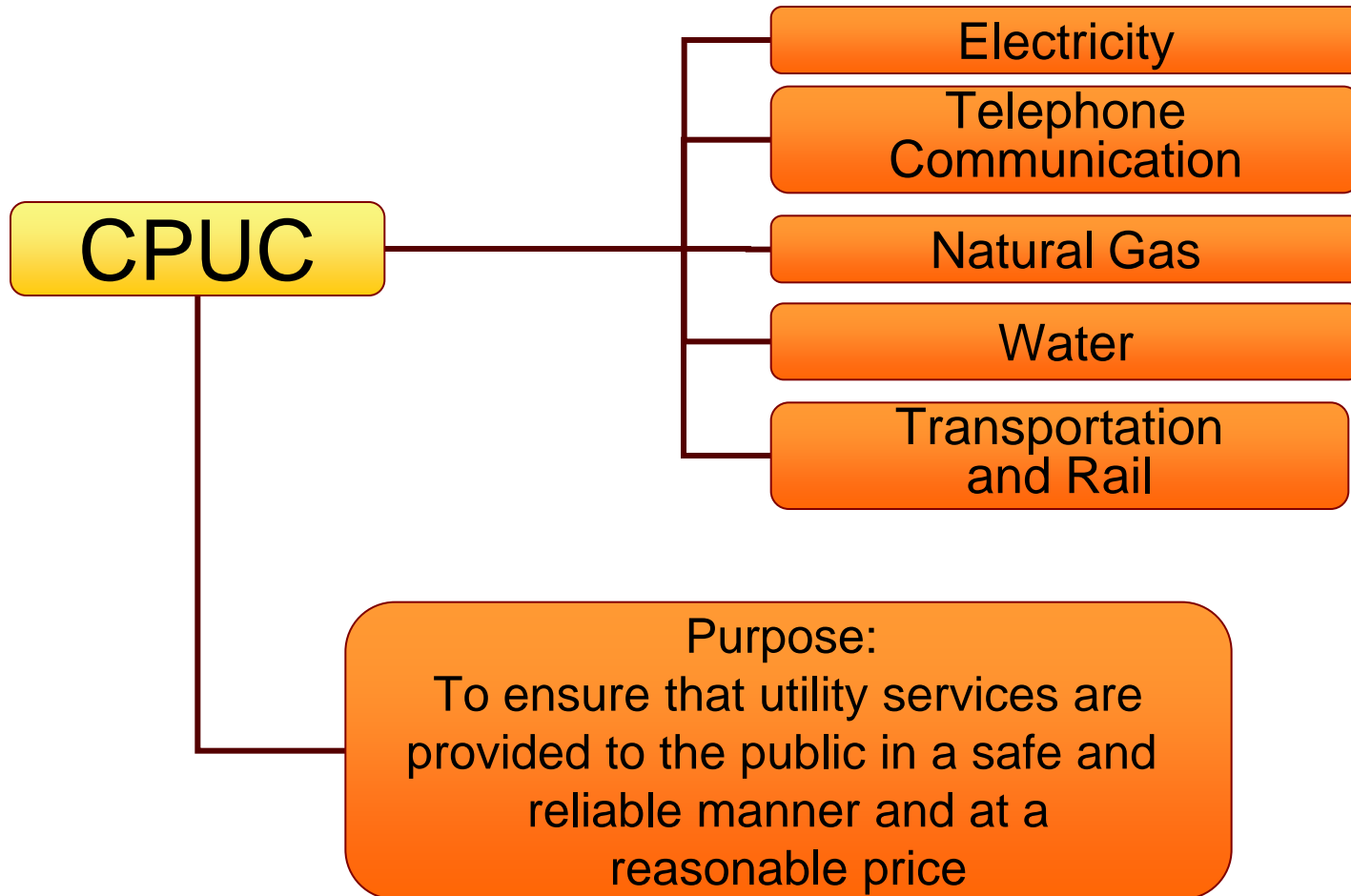
# CPUC and CEQA Review Process

---

- Scope of CPUC Regulation
- CPUC's Permit to Construct Process
- CPUC Review Process
- Overview of the CPUC Application and Environmental Review Process

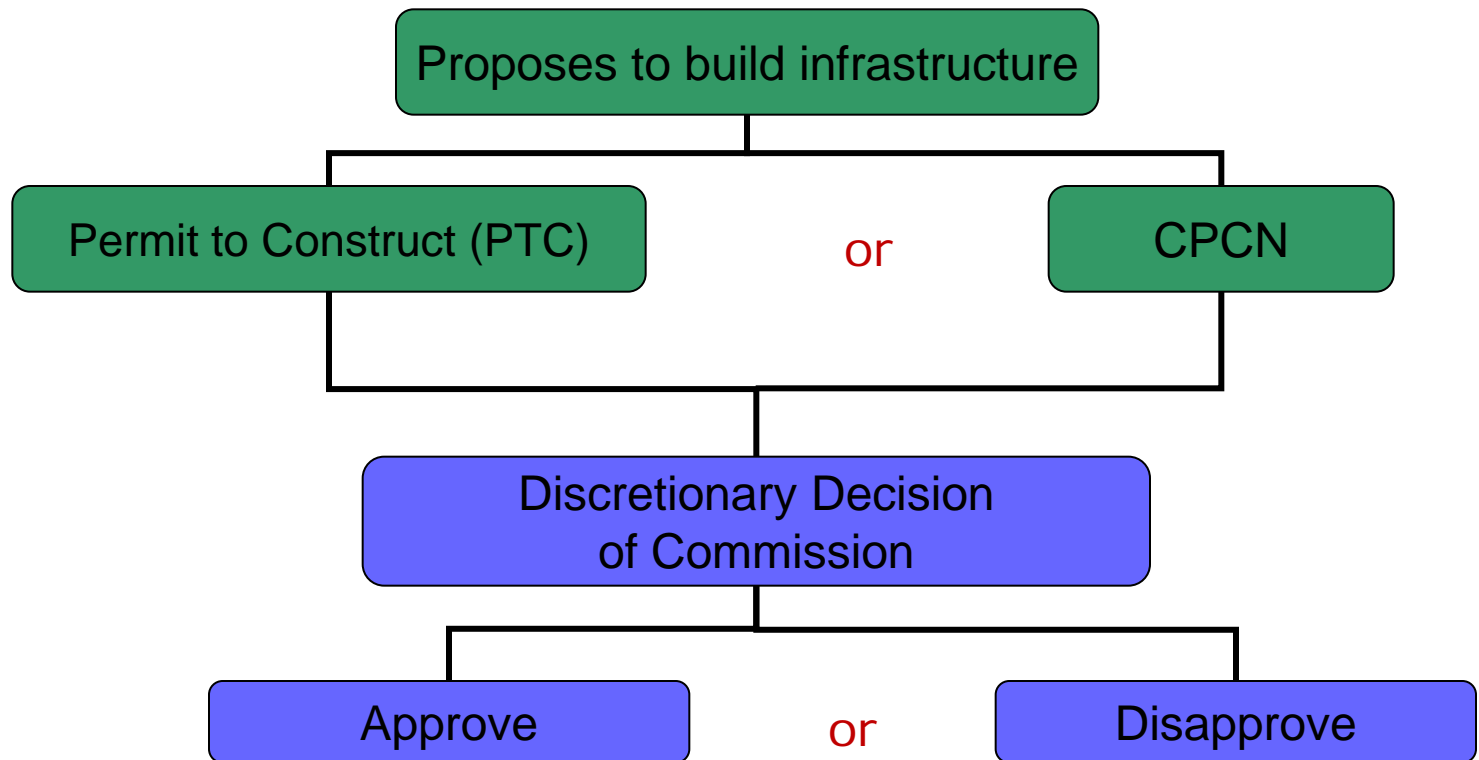
# Who Does the CPUC Regulate?

---



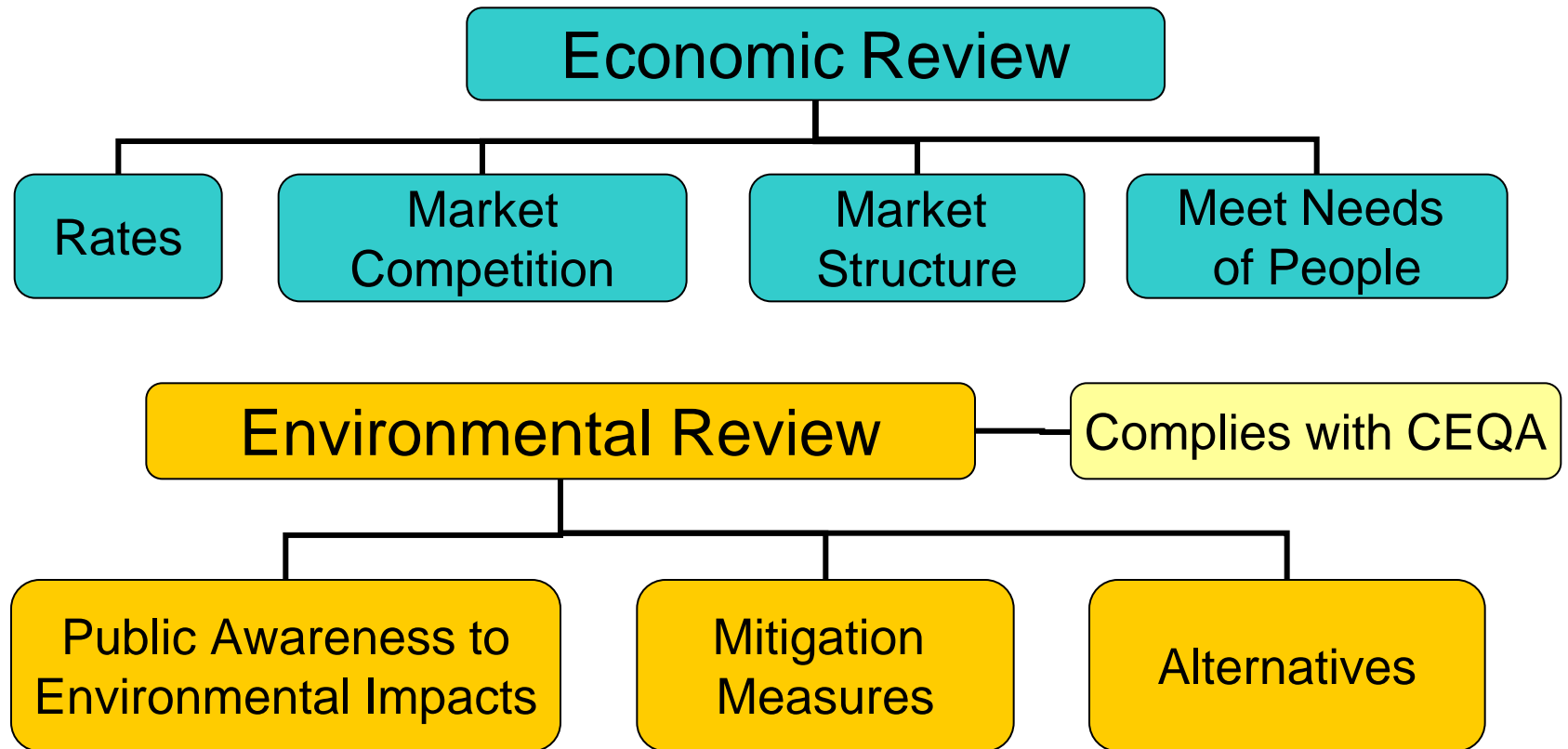
# Permit to Construct

---



# CPUC Review Process

---



# Application & Environmental Review Process

(Step 1)

**Utility Files Application**

**CPUC and its Environmental Consultant Review**

**Application  
Deemed Complete**

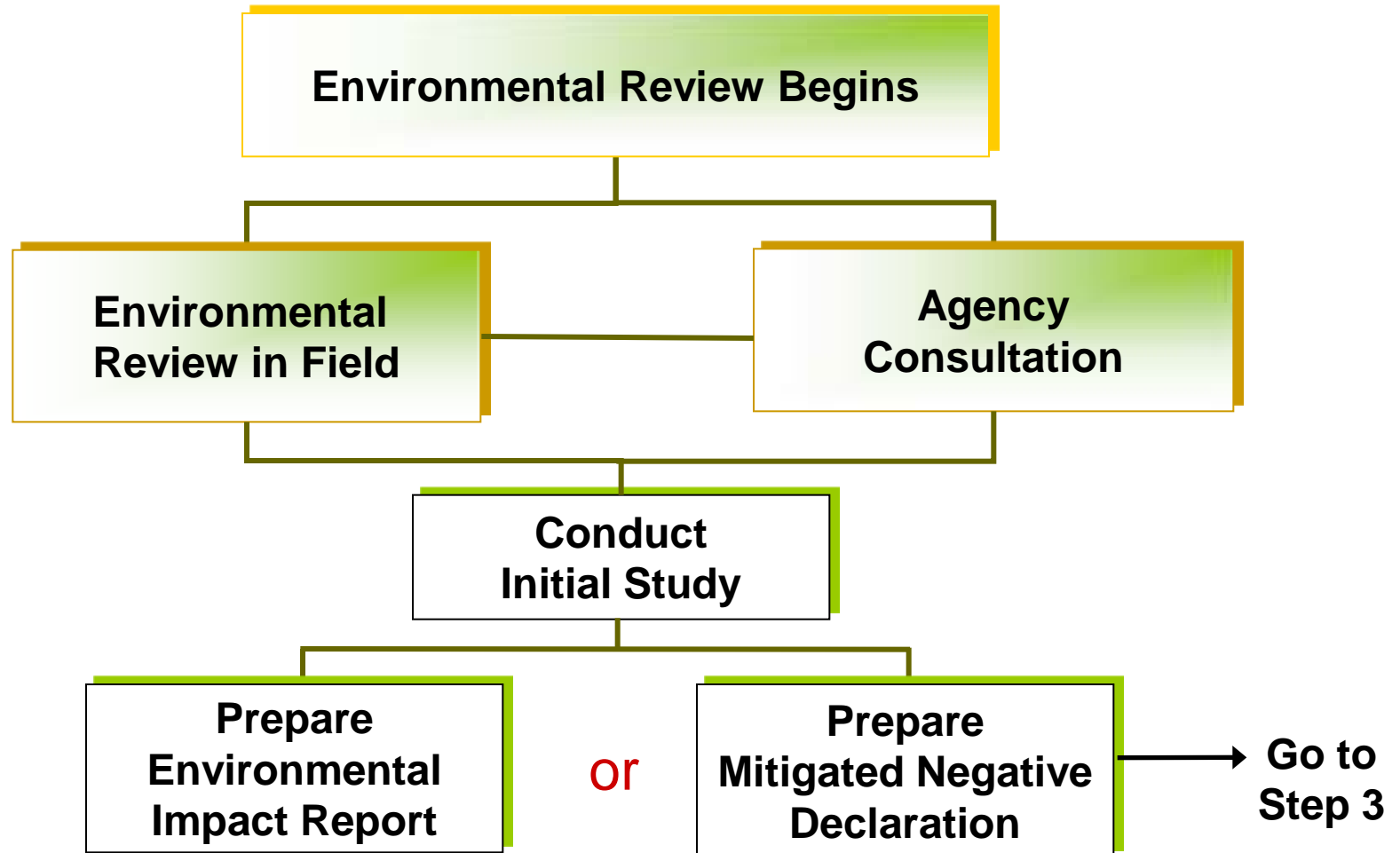
**Environmental  
Review Begins**

→ **Go to  
Step 2**



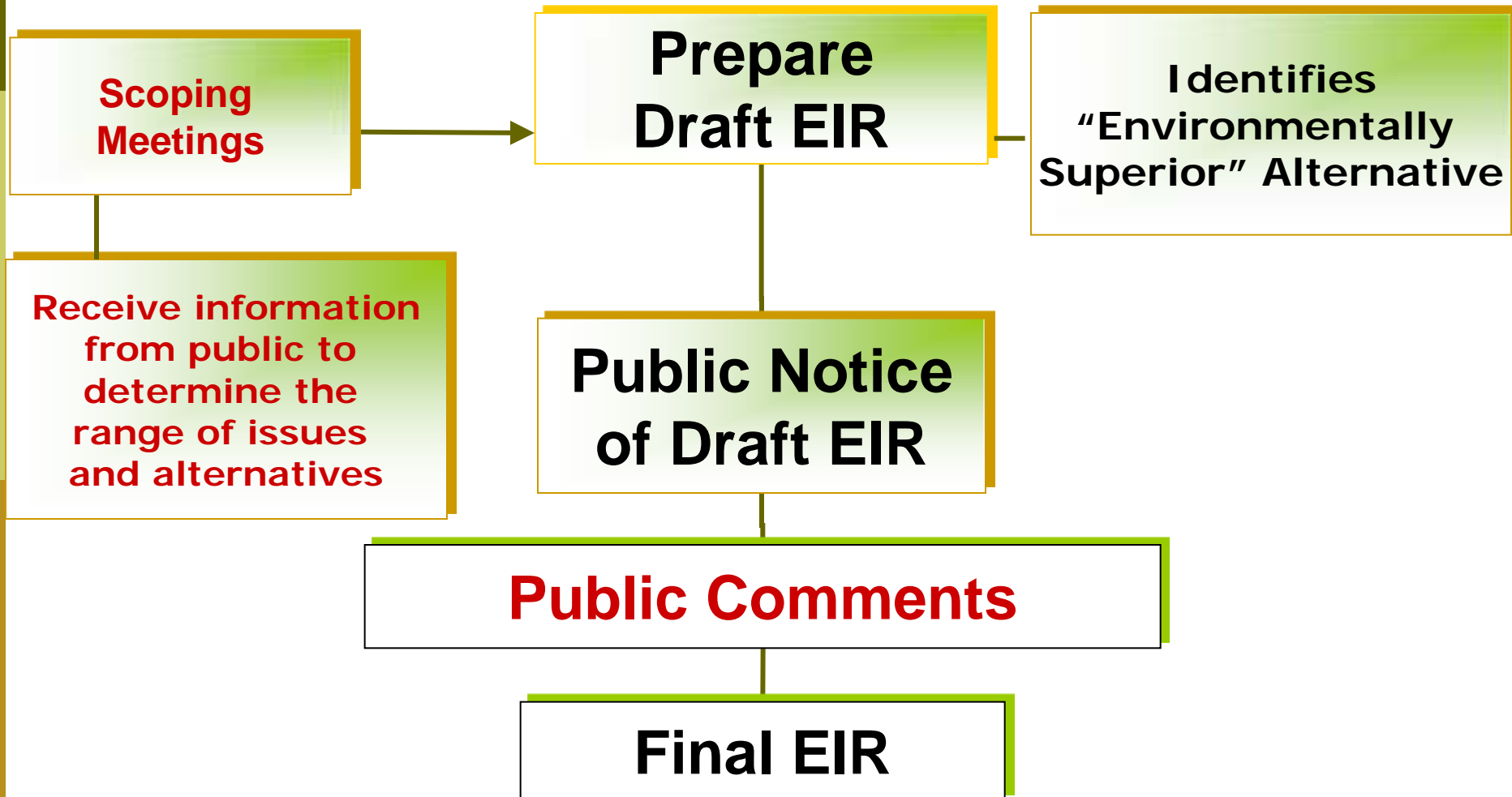
# Application & Environmental Review Process

(Step 2)



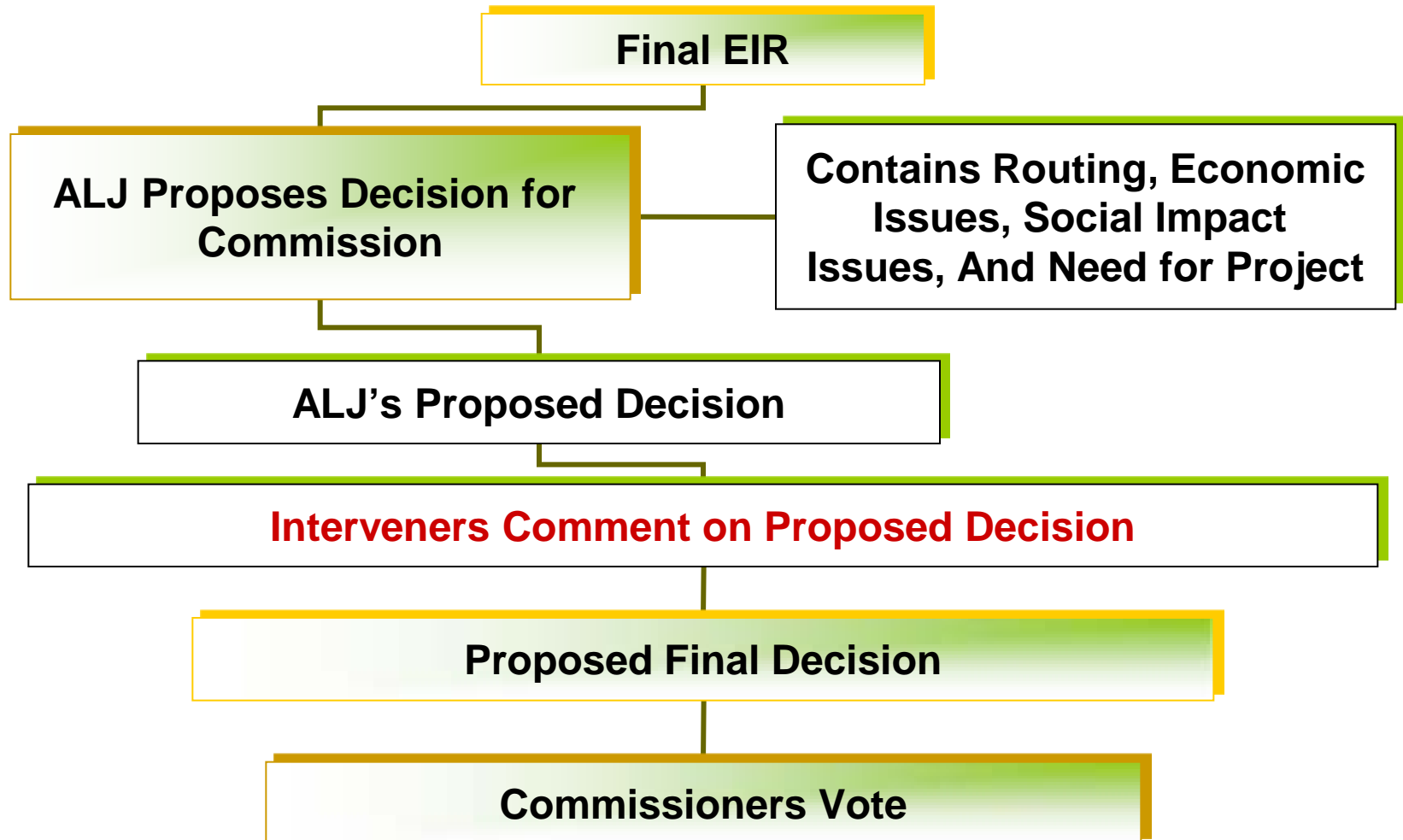
# Application & Environmental Review Process

(Step 3)



# Application & Environmental Review Process

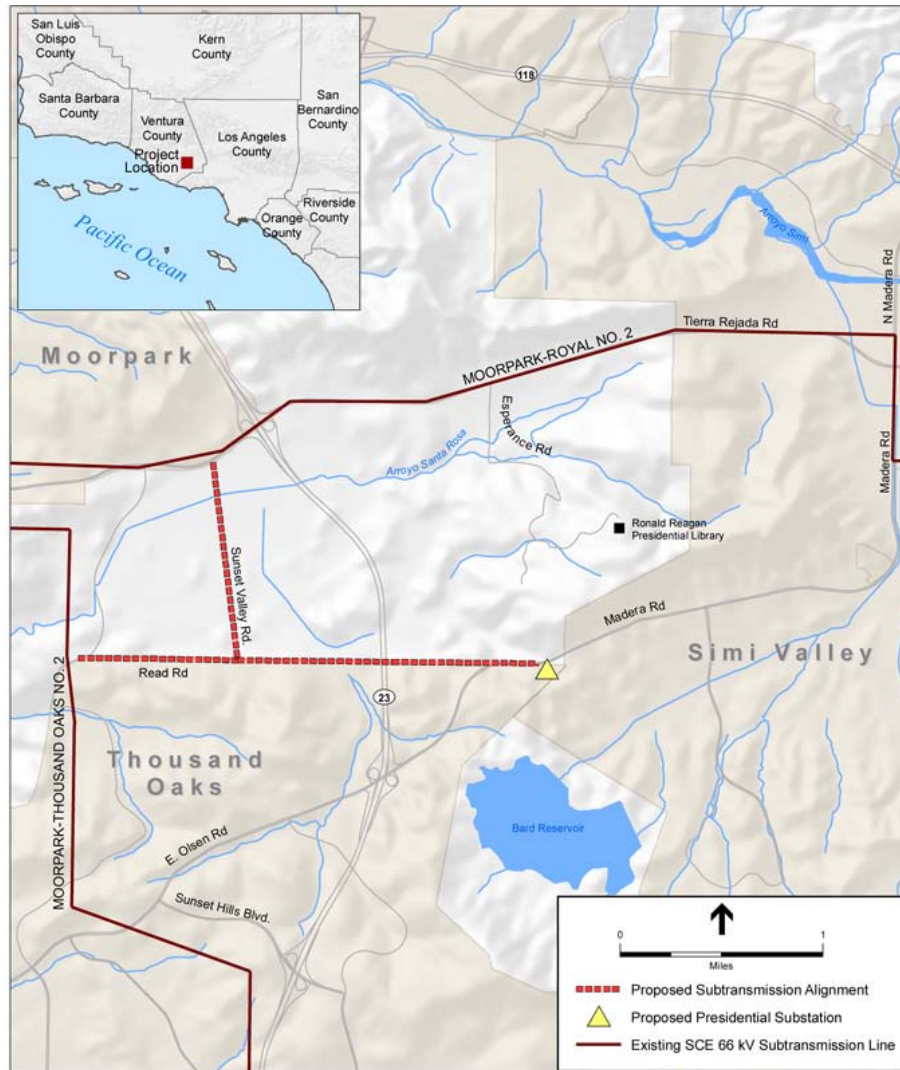
(Step 4)



# Project Overview

---

# Proposed Project Location



# Project Description

---

- ❑ The Proposed Project is located in the City of Thousand Oaks and unincorporated Ventura County. SCE requests authorization to:
- ❑ Construction of a new 66/16 kV distribution substation (proposed Presidential Substation) on an approximately 4-acre site;
- ❑ Replacement of existing 16 kV distribution and subtransmission poles with new subtransmission poles and installation of 66 kV subtransmission conductor to supply the proposed Presidential Substation;
- ❑ Installation of underground 66 kV subtransmission facilities for the portion of the route crossing Highway 23 (Hwy 23);
- ❑ Construction or relocation of related 16 kV distribution components, including four new 16 kV distribution getaways at the proposed Presidential Substation, and relocation, transfer, or upgrade of existing 16 kV distribution facilities either to new subtransmission poles or to new underground 16 kV distribution facilities. Upgrades to new 16 kV distribution would involve installation of new conductors instead of re-hanging or burying the existing 16 kV conductor; and
- ❑ Construction of facilities to connect the proposed Presidential Substation to SCE's existing telecommunications system.

# Project Objectives

---

## **SCE Objectives:**

- ❑ Meet long term electrical demand requirements in the ENA beginning in fall of 2012 or winter of 2013 and extending beyond 2014 in order to meet the 10-year planning criterion;
- ❑ Improve electrical system operational flexibility and reliability by providing the ability to transfer load between 16 kV distribution circuits and distribution substations within the ENA;
- ❑ Meet project needs while minimizing environmental impacts; and
- ❑ Meet project needs in a cost-effective manner.

According to SCE, construction of the Proposed Project is needed to maintain safe and reliable electric service to customers and to serve forecasted electrical demand in the ENA.

## **CEQA Team Objectives:**

- ❑ Meet long term electrical demand requirements in the ENA as defined in the proponents application and PEA (SCE 2008); and
- ❑ Improve electrical system operational flexibility and reliability by providing the ability to transfer load between 16 kV distribution circuits and 16k V distribution substations within the ENA.

# Alternatives

---

## CEQA Screening Process:

- Meet most (basic) project objectives
- Feasibility (technical, regulatory, legal)
- Avoid/lessen significant impacts



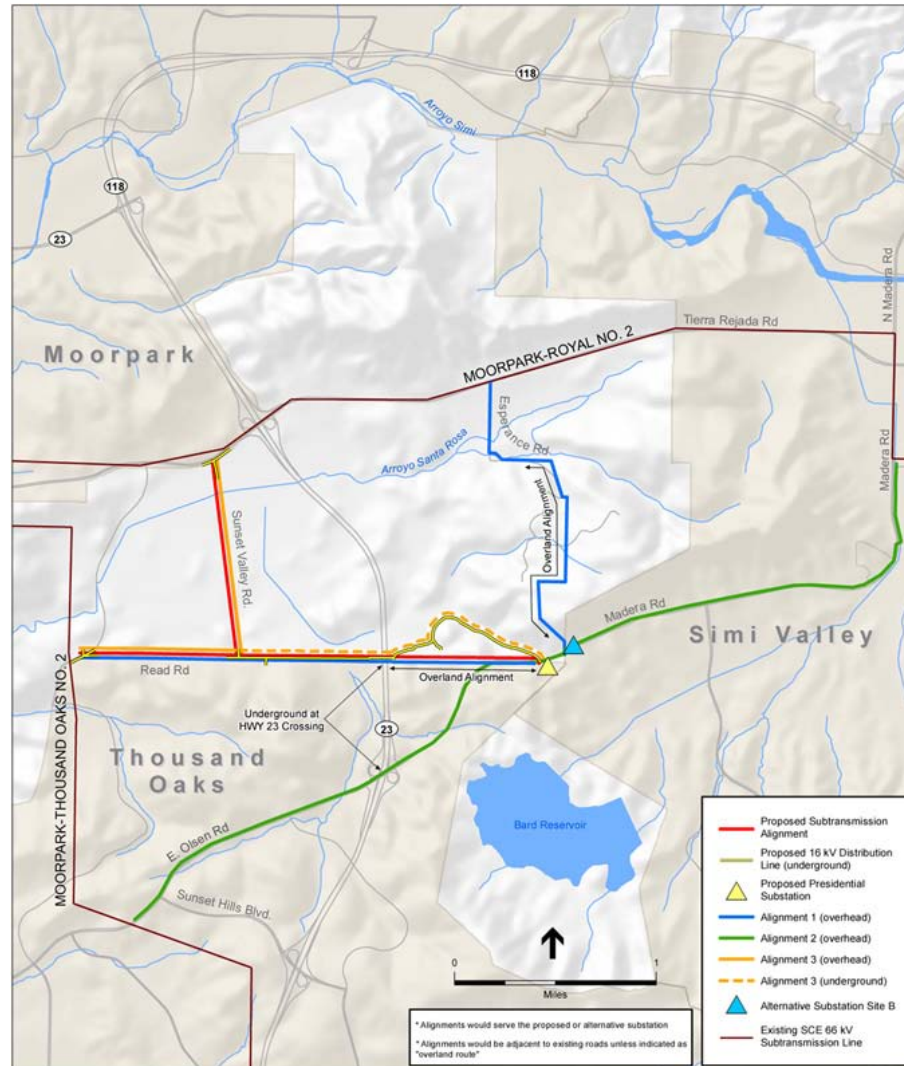
# Alternatives Screening

---

- ❑ Sixteen alternatives, plus “No Project”
- ❑ Five alternatives passed screening:
  - ❑ Alternative Subtransmission Alignment 1
  - ❑ Alternative Subtransmission Alignment 2
  - ❑ Alternative Subtransmission Alignment 3
  - ❑ Alternative Substation Site B
  - ❑ System Alternative B

Due to the proximity of the proposed Presidential Substation site and the Alternative Substation Site B, the comparison of alternatives is described as combinations of the alternative subtransmission alignments with each of the substation sites.

# Alternative Routes



# Summary of Impacts

---

The DEIR ranked each alternative component based on both whether significant unavoidable impacts would occur and the intensity and duration of the impact compared to the other alternatives.

## □ No or Less than Significant Impacts:

- Geology and Soils, Land Use and Planning, Population and Housing, Public Services, Recreation, and Utilities and Service Systems.

## □ Impacts Less than Significant with Mitigation:

- Agriculture Resources, Greenhouse Gas Emissions, Biological Resources, Hazards and Hazardous Materials, Cultural Resources, Hydrology and Water Quality, and Transportation and Traffic.

## □ Significant Unavoidable Impacts:

- Aesthetics, Air Quality, and Noise.

# Environmentally Superior Alternative

---

## Significant Unavoidable Impacts

- ❑ Aesthetics: Proposed Project, Alternative Subtransmission Alignment 1, and Alternative Subtransmission Alignment 2.
- ❑ Air Quality: Proposed Project, Alternative Subtransmission Alignment 1, Alternative Subtransmission Alignment 2, and Alternative Subtransmission Alignment 3.
- ❑ Noise: Proposed Project, Alternative Subtransmission Alignment 1, and Alternative Subtransmission Alignment 3.
- ❑ Conclusion: System Alternative B is the only alternative which would not result in significant unavoidable impacts.
  - CPUC Statement of Overriding Consideration.

# Next Steps

---

- Notice of Availability was circulated to solicit input from agencies and the public
- This meeting is part of the comment process
- Comments will be considered and addressed in the Final EIR
- CPUC considers EIR / other factors and issues a draft decision for the Proposed Project
- CPUC considers comments on draft and alternate decisions and votes on the Project

# Public Participation

---

## □ Environmental Review

- Scoping (March 2009 and September 2010)
- Draft EIR (September 16, 2011 through October 31, 2011)

## □ General Proceeding

# How to Comment

---

Please submit comments no later than Monday October 31,  
2011:

**Ms. Juralynne Mosley  
Presidential Substation Project  
c/o ESA  
1425 N. McDowell Blvd., Suite 200  
Petaluma, CA 94954  
Phone: (415) 962-8409  
Fax: (415) 896-0332  
[presidentialsub@esassoc.com](mailto:presidentialsub@esassoc.com)**

Website:

<http://www.cpuc.ca.gov/Environment/info/esa/presidentialsubstation/index.html>

---

---

# Public Comment



# Comment Guidelines

---

- ❑ One person to speak at a time
- ❑ Be concise
- ❑ Stay on topic
- ❑ Support everyone's participation
- ❑ Respect others' opinions
- ❑ Comments will be recorded
- ❑ Written comments are encouraged