

---

# Presidential Substation Project

---

**California Public Utilities Commission**

**Public Scoping Meeting  
for Preparation of an  
Environmental Impact Report (EIR)**

**March 3, 2009  
Thousand Oaks, CA**

# Participants and their Roles

---

- CPUC: Lead Agency under the California Environmental Quality Act (CEQA)
  - Juralynne Mosley, CPUC Project Manager
  
- Environmental Science Associates (ESA): Environmental Consultant to the CPUC
  - Jennifer Johnson, ESA Project Director
  - Michael Manka, ESA Project Manager
  - Christa Hudson, ESA Deputy Project Manager

# Meeting Agenda

---

- CPUC Review Process
- Project Overview
- Alternatives
- Next Steps
- CEQA Process Schedule
- Public Comment
  - Speaker cards
  - Comment forms

# Basic Environmental Review Process (Step 1)

---

**Utility Files Application**

**CPUC and its Environmental Consultant Review**

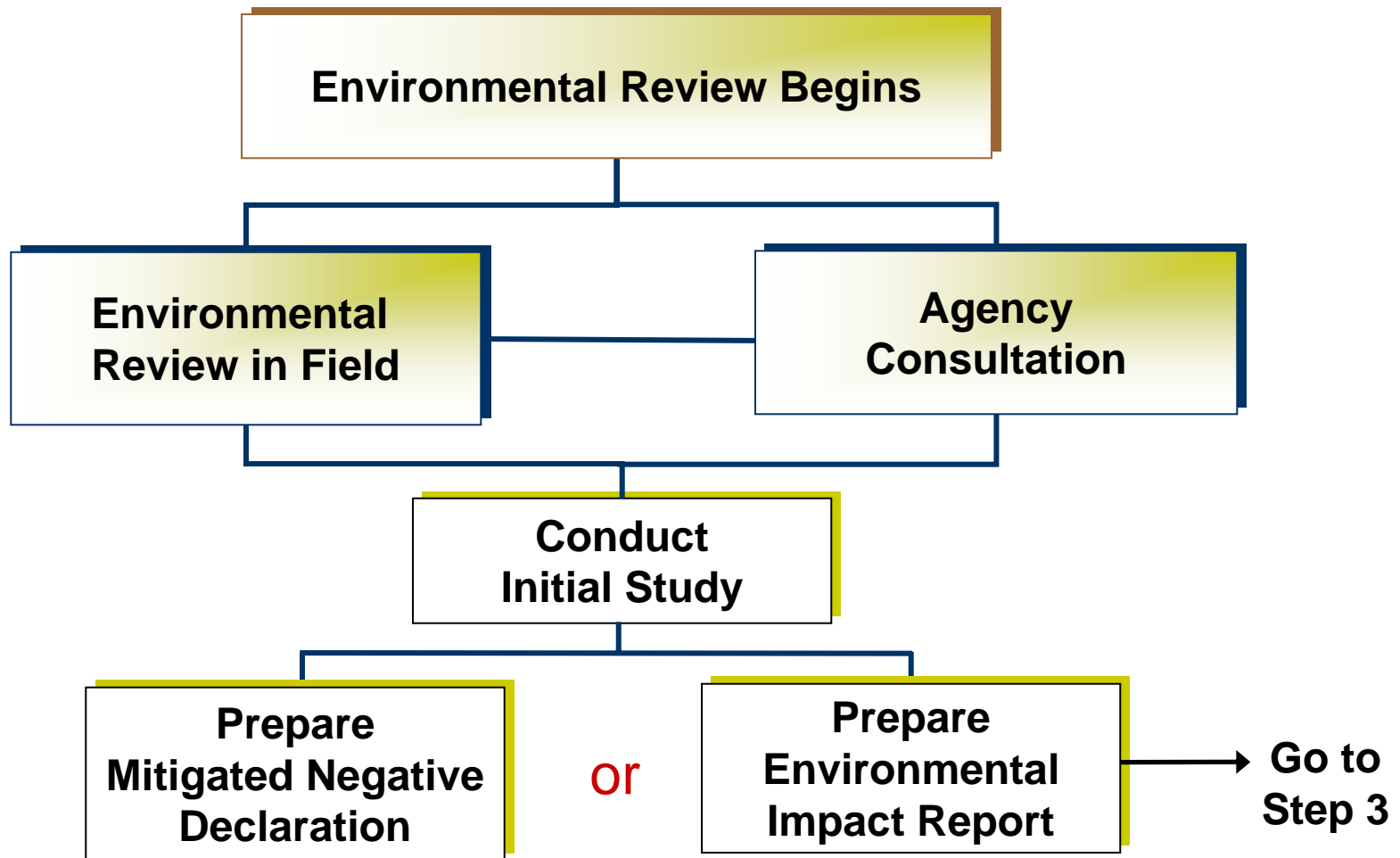
**Application  
Deemed Complete**

**Environmental  
Review Begins**

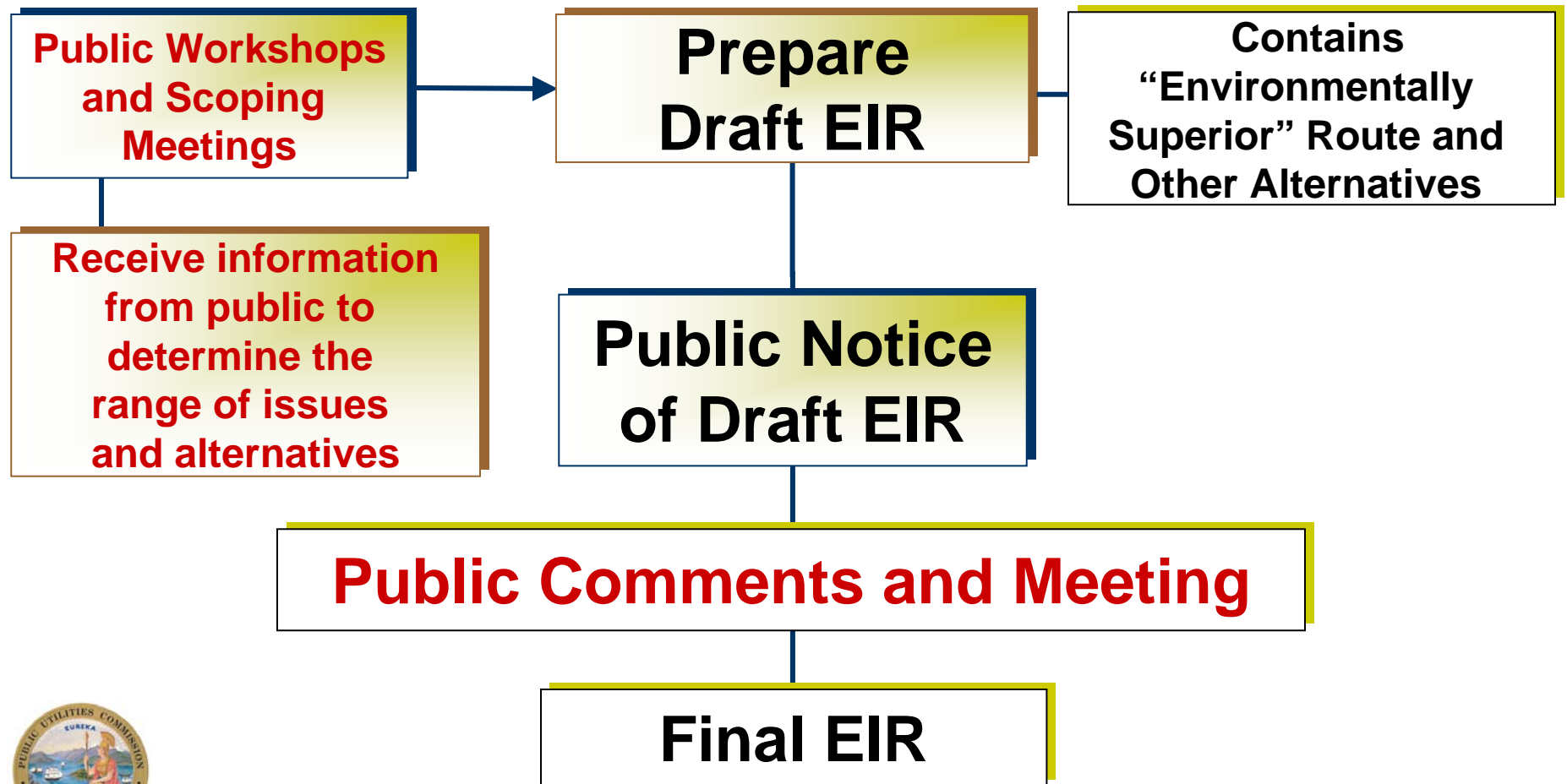
→ **Go to  
Step 2**



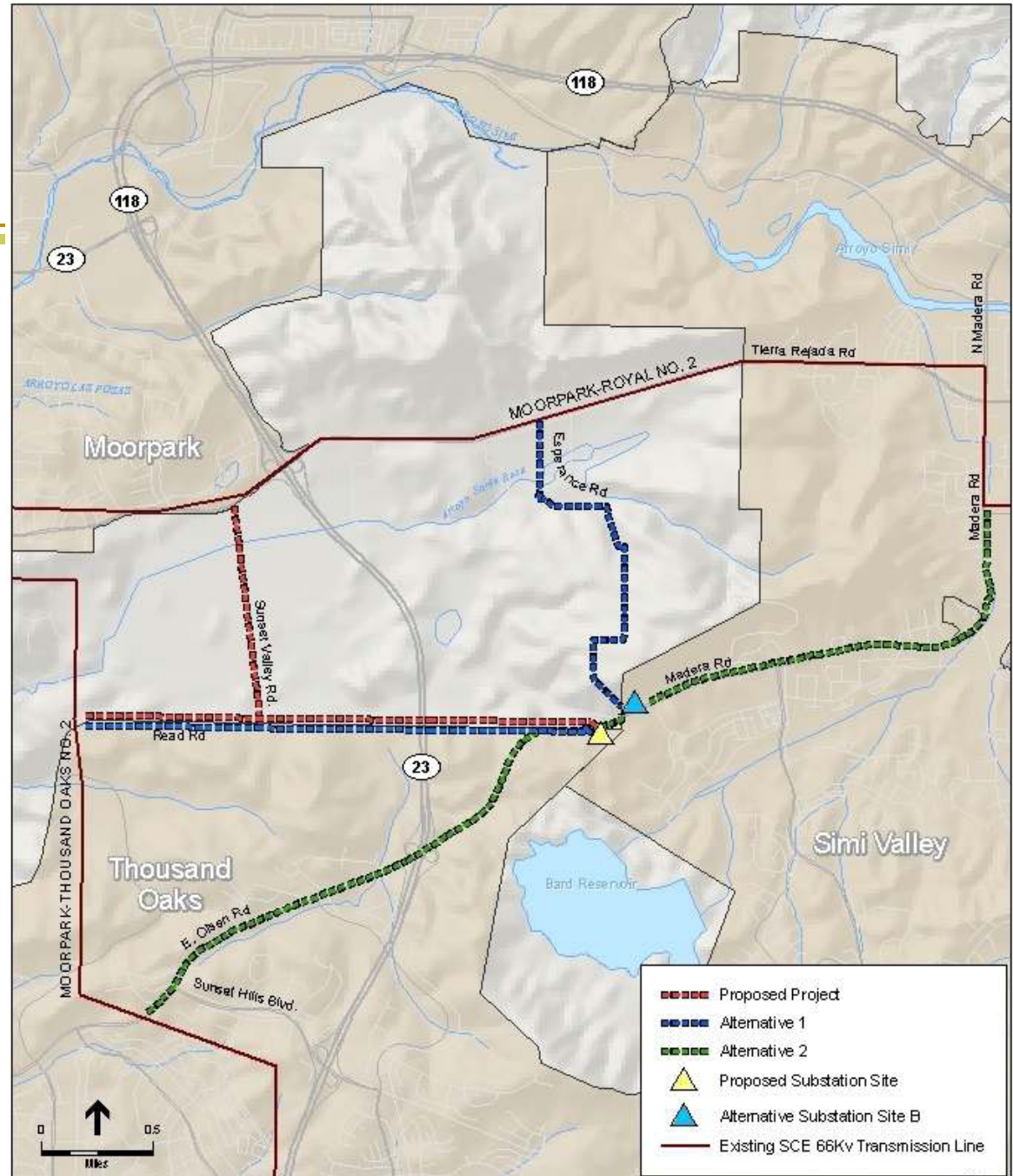
# Basic Environmental Review Process (Step 2)



# Basic Environmental Review Process (Step 3)



# Proposed Project Location



# Project Description

---

- New 66/16kV distribution substation
  - ~ 4 acre site in Thousand Oaks
  - Unstaffed, automated, low-profile substation
  
- Installation of ~ 3.5 miles of 66kV overhead subtransmission line
  - Unincorporated Ventura County and City of Thousand Oaks
  - Existing right-of-way (ROW) along Read Road and Sunset Valley Road
  - Removal of 79 existing distribution poles and 5 subtransmission poles; replacement with 83 new subtransmission poles
  
- Four new 16kV distribution getaways
  
- Facilities to connect the substation to SCE's existing telecommunications system



# Alternative Routes

---

## □ Alternative #1

### ■ Total Length: 4.5 miles

- 2.7 existing ROW
- 1.8 miles new ROW

### ■ Route:

- Heads east along Read Road from the intersection of Read Road and Moorpark Road, towards Sunset Valley Road, across Highway 23, to the Proposed Substation Site (~2.7 miles)
- Heads in a northerly direction from Proposed Substation towards Esperance Road (~1 mile)
- Parallels Esperance Road to Tierra Rejada Road (~0.8 miles)
- Traverses land presently used for open space and rural residential purposes

# Alternative Routes (cont'd)

---

## □ Alternative #2

- Total Length: ~5 miles
  - Minimal new ROW may be required
- Route:
  - Northeast along East Olsen Road, near the intersection of Olsen Road and Sunset Hills Boulevard in Thousand Oaks
  - Follows East Olsen Road to Proposed Substation
  - Continues along Madera Road to the intersection of Madera Road and Tierra Rejada Road in Simi Valley
  - Adjacent land uses include residential, commercial, public space, and open space

# Alternative Substation

---

## □ Alternative Substation Location B

### ■ ~2.3 acre parcel in Simi Valley

- North side of Madera Road
- Site of former Ventura County Sheriff's Department
- Presently contains buildings, structures, a garage and parking areas

# Next Steps

---

- ❑ Notice of Preparation was circulated to solicit input from agencies and the public
- ❑ This meeting is part of the scoping process
- ❑ A Draft EIR will be prepared and circulated for agency and public comment
- ❑ Comments will be considered and addressed in a Final EIR
- ❑ CPUC issues a draft decision on the Proposed Project after considering the EIR / other factors
- ❑ CPUC considers comments on draft and alternate decisions and votes on the Project

# CEQA Process Schedule

<b>Agency consultation meetings</b>	<b>On going</b>
<b>Notice of Preparation to solicit written input from agencies and the public</b>	<b>February 17, 2009 – March 19, 2009</b>
<b>Public Scoping meeting held in the project area</b>	<b>March 3, 2009</b>
<b>Draft EIR circulated for agency and public comment</b>	<b>June 2009</b>
<b>Public comment meetings will be held in the project area</b>	<b>July 2009</b>
<b>Consider and respond to comments, publish Final EIR</b>	<b>September 2009</b>
<b>CPUC considers approval/disapproval of the Project</b>	<b>December 2009</b>

\*Dates subject to change.

# How to Comment

---

- Please submit scoping comments no later than Thursday March 19, 2009 to:

Ms. Juralynne Mosley  
Presidential Substation Project  
c/o Environmental Science Associates  
1425 N. McDowell Blvd, Suite 105  
Petaluma, CA 94954

Fax: (707) 795-0902

E-mail: [presidentialsub@esassoc.com](mailto:presidentialsub@esassoc.com)

Website: <http://www.cpuc.ca.gov/Environment/info/esa/presidentialsubstation/index.html>



---

---

# Public Comment

# Discussion Guidelines

---

- ❑ One person to speak at a time
- ❑ Be concise
- ❑ Stay on topic
- ❑ Support everyone's participation
- ❑ Respect others' opinions
- ❑ Comments will be recorded
- ❑ Written comments are encouraged