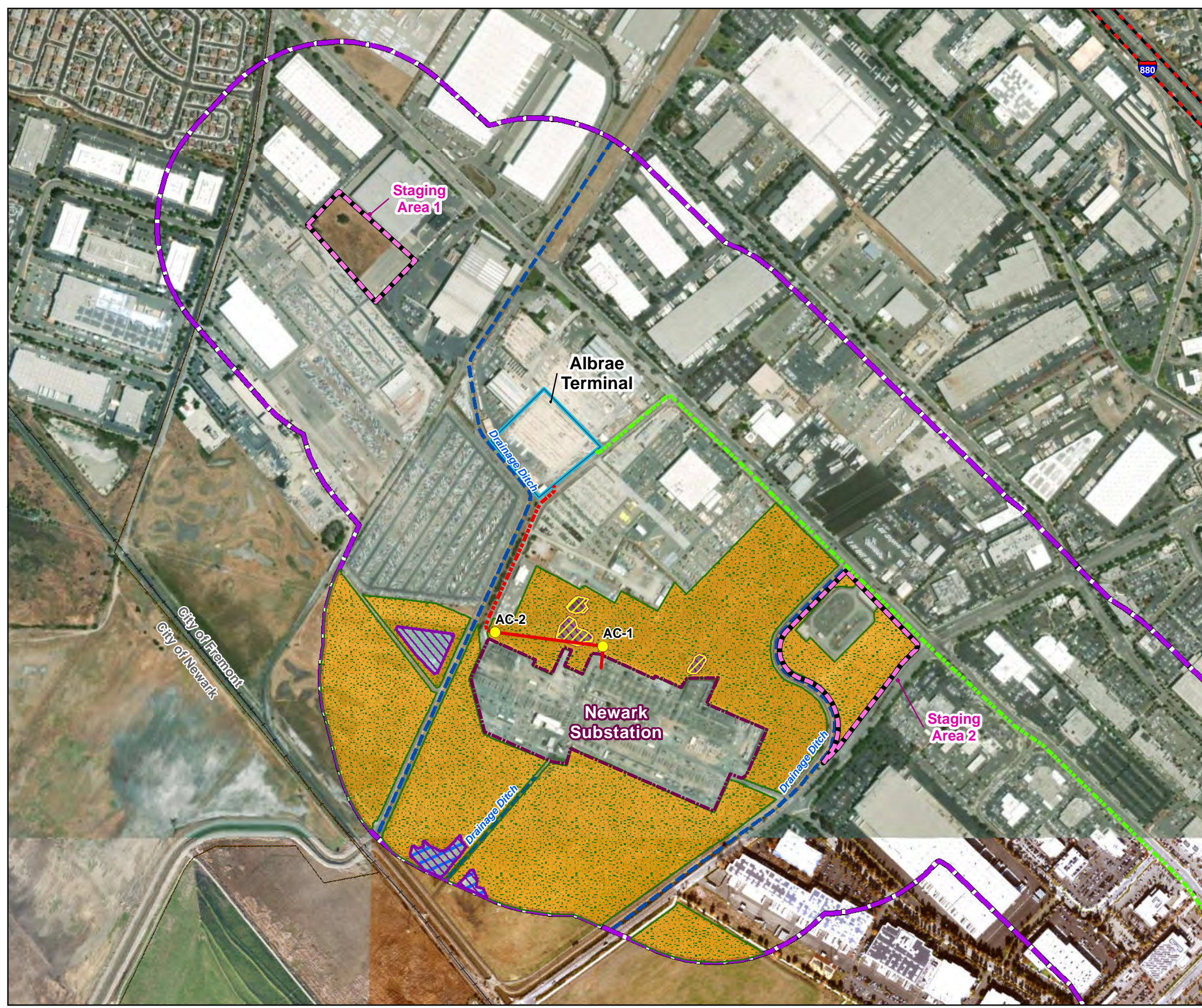


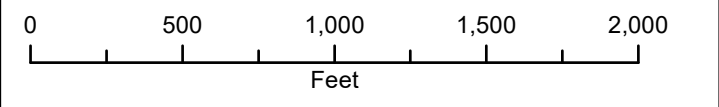
**POWER THE SOUTH BAY PROJECT**  
**Figure 5.4-9: Potentially Impacted Species Habitats**  
**Alameda Co. and Santa Clara Co., CA**



**LEGEND**

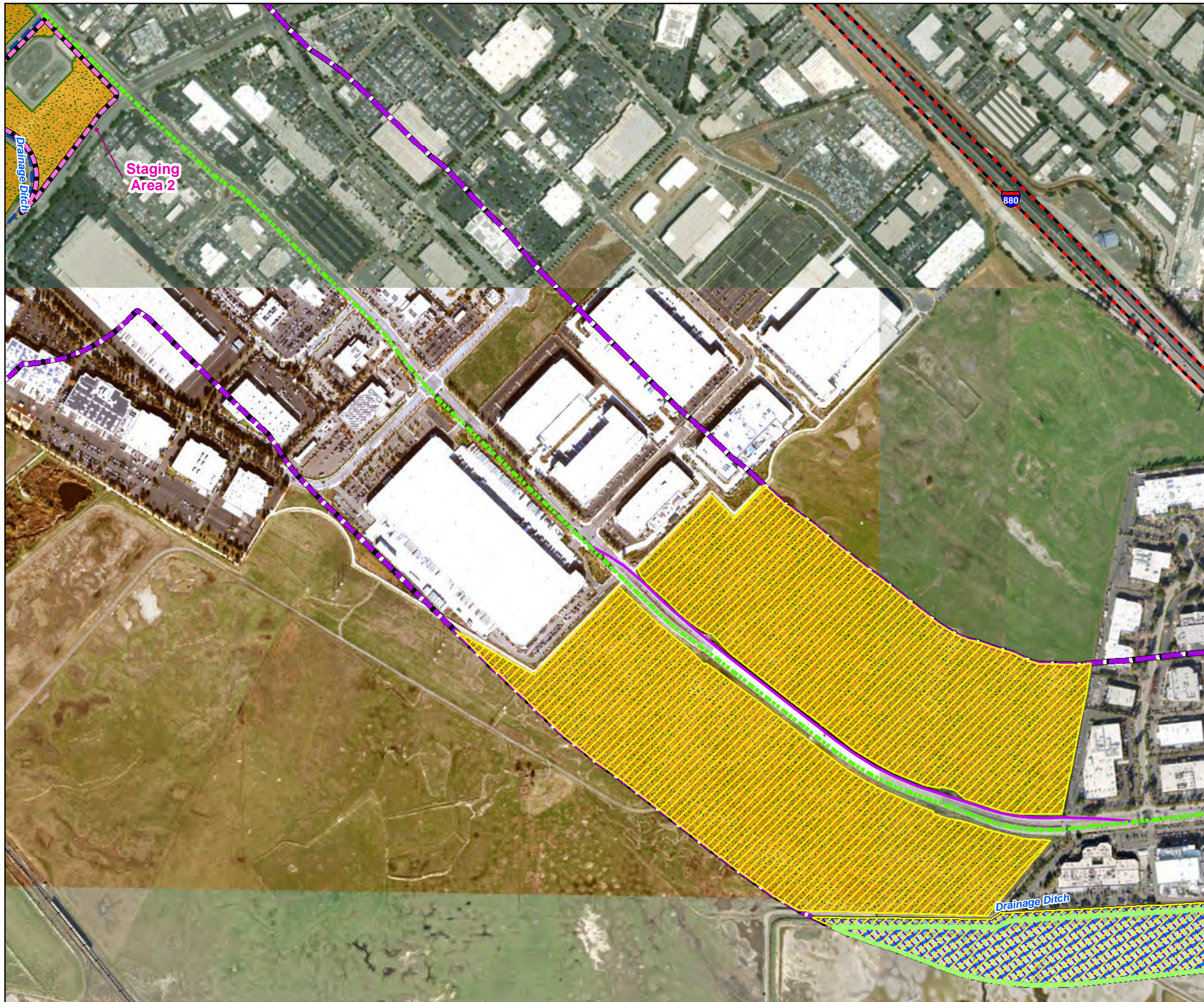
- Proposed Project Components**
- Overhead Transmission Structure
  - Baylands to NRS 230 kV AC Transmission Line (Overhead)
  - - - Baylands to NRS 230 kV AC Transmission Line (Underground)
  - Albrae to Baylands 320 kV DC Transmission Line (Overhead)
  - - - Albrae to Baylands 320 kV DC Transmission Line (Underground)
  - Newark to Albrae 230 kV AC Transmission Line (Overhead)
  - - - Newark to Albrae 230 kV AC Transmission Line (Underground)
  - Optional Trench Location
  - Access Road
  - HVDC Terminal Site
  - Existing Substation Fenceline
  - Construction Staging Area
  - Biological Resource Survey Area
- Potentially Impacted Species Habitats**
- Burrowing owl, golden eagle and other raptors
  - CA Tiger Salamander/CA red legged frog
  - California Ridgeway's rail, CA black rail
  - Salt marsh harvest mouse
  - Tri-colored blackbird
  - Vernal pool tadpole shrimp/Vernal pool fairy shrimp
  - Western bumblebee/Crotch's bumblebee/Monarch butterfly
  - Western pond turtle
  - Western snowy plover
- General Features**
- Municipal Boundary
  - Interstate
  - US Route or State Highway
  - Railroad
  - River or Stream
  - Drainage Ditch

GIS Power Centinella\Newark PEABio Figures\Figure 14 Potentially Impacted Species Habitats.mxd 6/28/2024 RCC



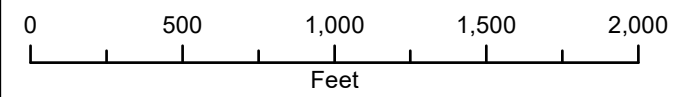
Sources: LSPGC 2023; Source: Esri, Maxar, Earthstar Geographics, and the GIS User Community, National Geographic, Esri, Garmin, HERE, UNEP-WCMC, USGS, NASA, ESA, METI, NRCAN, GEBCO, NOAA, increment P Corp.

**POWER THE SOUTH BAY PROJECT**  
**Figure 5.4-9: Potentially Impacted Species Habitats**  
**Alameda Co. and Santa Clara Co., CA**



**LEGEND**

- Proposed Project Components**
- Overhead Transmission Structure
  - Baylands to NRS 230 kV AC Transmission Line (Overhead)
  - - - Baylands to NRS 230 kV AC Transmission Line (Underground)
  - Albrae to Baylands 320 kV DC Transmission Line (Overhead)
  - - - Albrae to Baylands 320 kV DC Transmission Line (Underground)
  - Newark to Albrae 230 kV AC Transmission Line (Overhead)
  - - - Newark to Albrae 230 kV AC Transmission Line (Underground)
  - Optional Trench Location
  - Access Road
  - HVDC Terminal Site
  - Existing Substation Fenceline
  - Construction Staging Area
  - Biological Resource Survey Area
- Potentially Impacted Species Habitats**
- Burrowing owl, golden eagle and other raptors
  - CA Tiger Salamander/CA red legged frog
  - California Ridgeway's rail, CA black rail
  - Salt marsh harvest mouse
  - Tri-colored blackbird
  - Vernal pool tadpole shrimp/Vernal pool fairy shrimp
  - Western bumblebee/Crotch's bumblebee/Monarch butterfly
  - Western pond turtle
  - Western snowy plover
- General Features**
- Municipal Boundary
  - Interstate
  - US Route or State Highway
  - Railroad
  - River or Stream
  - Drainage Ditch



Sources: LSPGC 2023; Source: Esri, Maxar, Earthstar Geographics, and the GIS User Community, National Geographic, Esri, Garmin, HERE, UNEP-WCMC, USGS, NASA, ESA, METI, NRCAN, GEBCO, NOAA, increment P Corp.

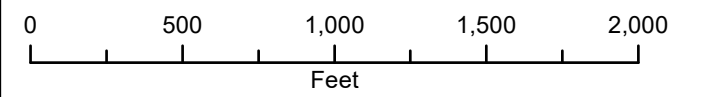
GIS: Power Central/MX/Network PEABio Figures/figure 14 Potentially Impacted Species Habitats.mxd 6/28/2024 RCC

**POWER THE SOUTH BAY PROJECT**  
**Figure 5.4-9: Potentially Impacted Species Habitats**  
**Alameda Co. and Santa Clara Co., CA**



**LEGEND**

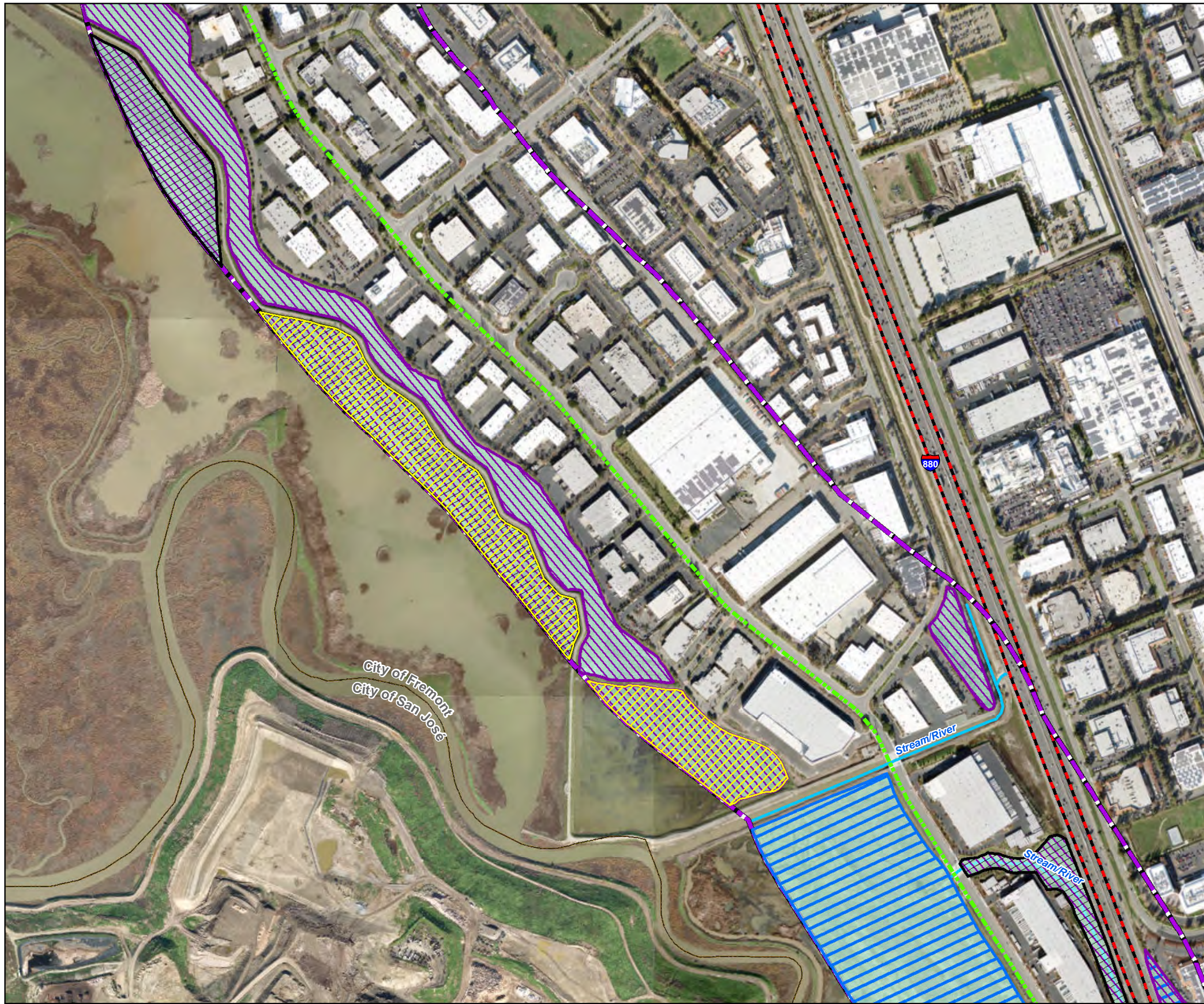
- Proposed Project Components**
- Overhead Transmission Structure
  - Baylands to NRS 230 kV AC Transmission Line (Overhead)
  - - - Baylands to NRS 230 kV AC Transmission Line (Underground)
  - Albrae to Baylands 320 kV DC Transmission Line (Overhead)
  - - - Albrae to Baylands 320 kV DC Transmission Line (Underground)
  - Newark to Albrae 230 kV AC Transmission Line (Overhead)
  - - - Newark to Albrae 230 kV AC Transmission Line (Underground)
  - Optional Trench Location
  - Access Road
  - HVDC Terminal Site
  - Existing Substation Fenceline
  - Construction Staging Area
  - Biological Resource Survey Area
- Potentially Impacted Species Habitats**
- Burrowing owl, golden eagle and other raptors
  - CA Tiger Salamander/CA red legged frog
  - California Ridgeway's rail, CA black rail
  - Salt marsh harvest mouse
  - Tri-colored blackbird
  - Vernal pool tadpole shrimp/Vernal pool fairy shrimp
  - Western bumblebee/Crotch's bumblebee/ Monarch butterfly
  - Western pond turtle
  - Western snowy plover
- General Features**
- Municipal Boundary
  - Interstate
  - US Route or State Highway
  - Railroad
  - River or Stream
  - Drainage Ditch



Sources: LSPGC 2023; Source: Esri, Maxar, Earthstar Geographics, and the GIS User Community, National Geographic, Esri, Garmin, HERE, UNEP-WCMC, USGS, NASA, ESA, METI, NRCAN, GEBCO, NOAA, increment P Corp.

GIS: Power Central/MXD/Newark PEABio Figures\Figure 14 Potentially Impacted Species Habitats.mxd 6/28/2024 RCC

**POWER THE SOUTH BAY PROJECT**  
**Figure 5.4-9: Potentially Impacted Species Habitats**  
**Alameda Co. and Santa Clara Co., CA**



**LEGEND**

**Proposed Project Components**

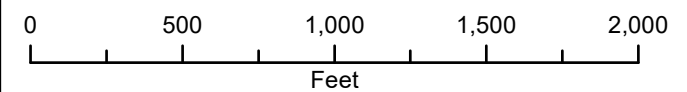
- Overhead Transmission Structure
- Baylands to NRS 230 kV AC Transmission Line (Overhead)
- - - Baylands to NRS 230 kV AC Transmission Line (Underground)
- Albrae to Baylands 320 kV DC Transmission Line (Overhead)
- - - Albrae to Baylands 320 kV DC Transmission Line (Underground)
- Newark to Albrae 230 kV AC Transmission Line (Overhead)
- - - Newark to Albrae 230 kV AC Transmission Line (Underground)
- Optional Trench Location
- Access Road
- HVDC Terminal Site
- Existing Substation Fenceline
- Construction Staging Area
- Biological Resource Survey Area

**Potentially Impacted Species Habitats**

- Burrowing owl, golden eagle and other raptors
- CA Tiger Salamander/CA red legged frog
- California Ridgeway's rail, CA black rail
- Salt marsh harvest mouse
- Tri-colored blackbird
- Vernal pool tadpole shrimp/Vernal pool fairy shrimp
- Western bumblebee/Crotch's bumblebee/Monarch butterfly
- Western pond turtle
- Western snowy plover

**General Features**

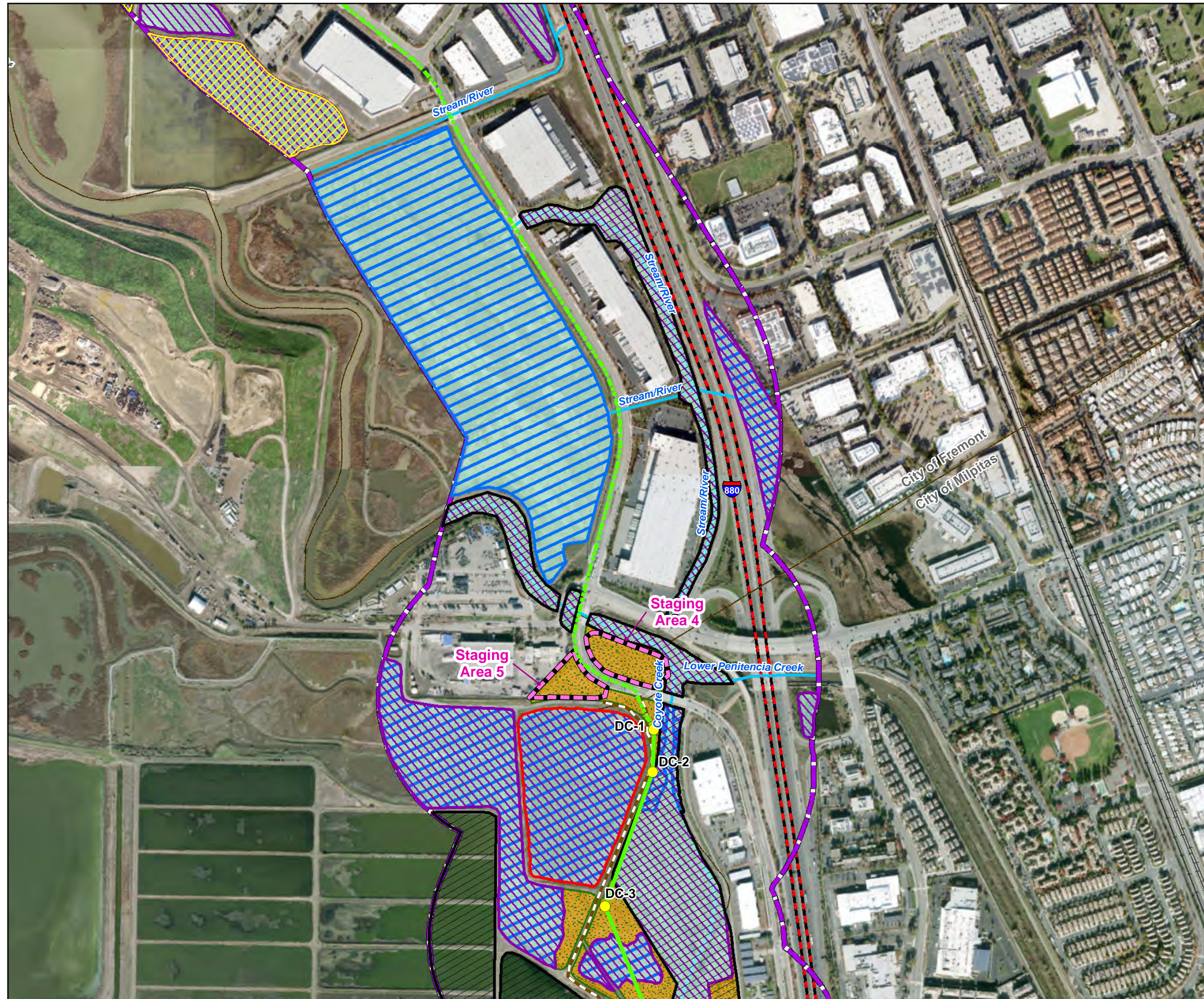
- Municipal Boundary
- Interstate
- US Route or State Highway
- Railroad
- River or Stream
- Drainage Ditch



Sources: LSPGC 2023; Source: Esri, Maxar, Earthstar Geographics, and the GIS User Community, National Geographic, Esri, Garmin, HERE, UNEP-WCMC, USGS, NASA, ESA, METI, NRCAN, GEBCO, NOAA, increment P Corp.

GIS Power Centinella/MXD/Newark PEABio Figures/Figure 14 Potentially Impacted Species Habitats.mxd 6/28/2024 RCC

**POWER THE SOUTH BAY PROJECT**  
**Figure 5.4-9: Potentially Impacted Species Habitats**  
**Alameda Co. and Santa Clara Co., CA**



**LEGEND**

**Proposed Project Components**

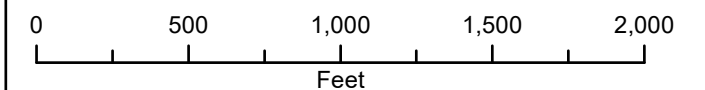
- Overhead Transmission Structure
- Baylands to NRS 230 kV AC Transmission Line (Overhead)
- - - Baylands to NRS 230 kV AC Transmission Line (Underground)
- Albrae to Baylands 320 kV DC Transmission Line (Overhead)
- - - Albrae to Baylands 320 kV DC Transmission Line (Underground)
- Newark to Albrae 230 kV AC Transmission Line (Overhead)
- - - Newark to Albrae 230 kV AC Transmission Line (Underground)
- Optional Trench Location
- Access Road
- HVDC Terminal Site
- Existing Substation Fenceline
- Construction Staging Area
- Biological Resource Survey Area

**Potentially Impacted Species Habitats**

- Burrowing owl, golden eagle and other raptors
- CA Tiger Salamander/CA red legged frog
- California Ridgeway's rail, CA black rail
- Salt marsh harvest mouse
- Tri-colored blackbird
- Vernal pool tadpole shrimp/Vernal pool fairy shrimp
- Western bumblebee/Crotch's bumblebee/Monarch butterfly
- Western pond turtle
- Western snowy plover

**General Features**

- Municipal Boundary
- Interstate
- US Route or State Highway
- Railroad
- River or Stream
- Drainage Ditch



Sources: LSPGC 2023; Source: Esri, Maxar, Earthstar Geographics, and the GIS User Community, National Geographic, Esri, Garmin, HERE, UNEP-WCMC, USGS, NASA, ESA, METI, NRCAN, GEBCO, NOAA, increment P Corp.

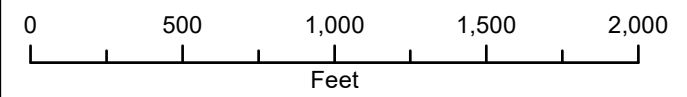
GIS Power Central/MXD/Newark PEABio Figures/figure 14 Potentially Impacted Species Habitats.mxd 6/28/2024 RCC

**POWER THE SOUTH BAY PROJECT**  
**Figure 5.4-9: Potentially Impacted Species Habitats**  
**Alameda Co. and Santa Clara Co., CA**



**LEGEND**

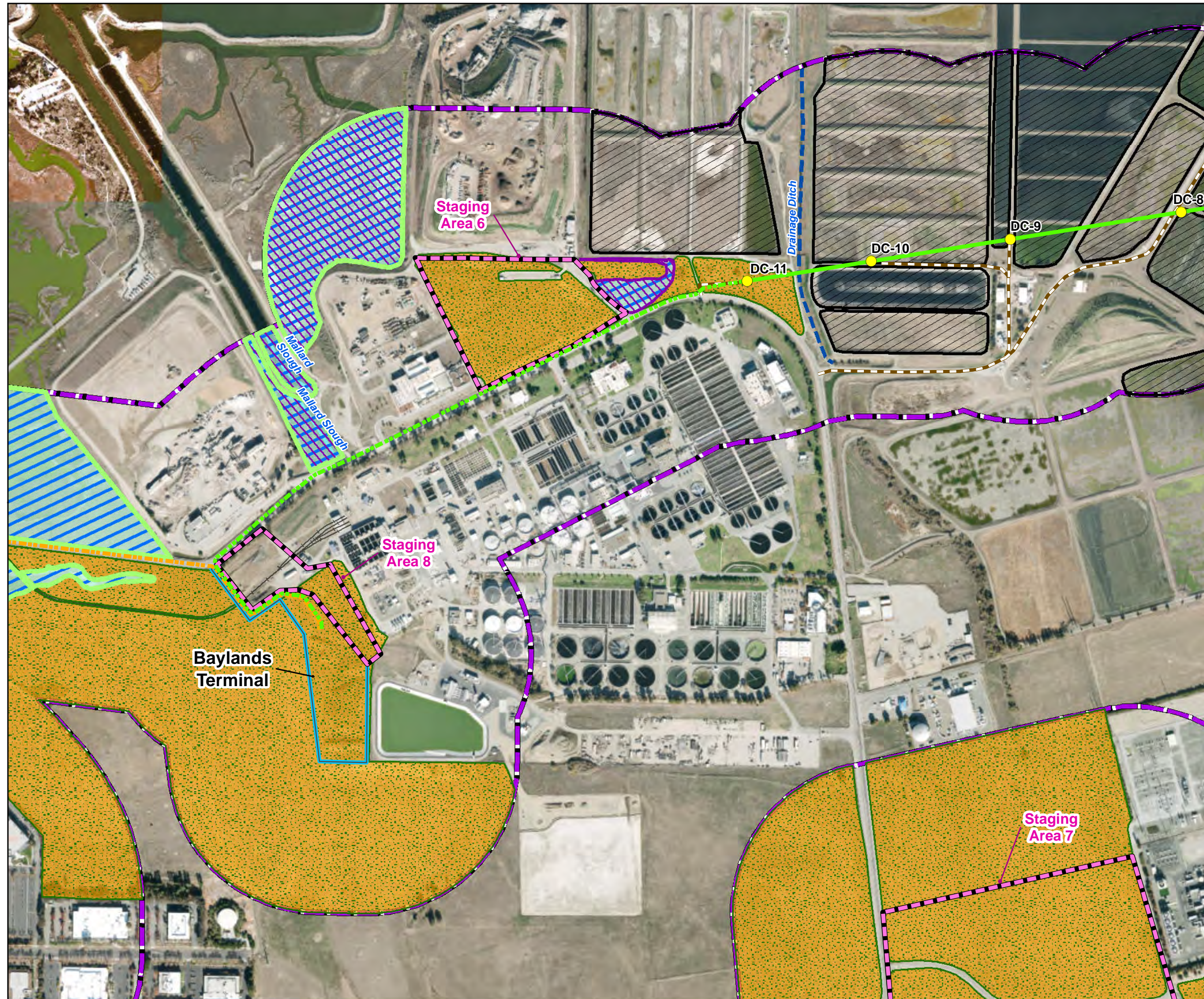
- Proposed Project Components**
- Overhead Transmission Structure
  - Baylands to NRS 230 kV AC Transmission Line (Overhead)
  - - - Baylands to NRS 230 kV AC Transmission Line (Underground)
  - Albrae to Baylands 320 kV DC Transmission Line (Overhead)
  - - - Albrae to Baylands 320 kV DC Transmission Line (Underground)
  - Newark to Albrae 230 kV AC Transmission Line (Overhead)
  - - - Newark to Albrae 230 kV AC Transmission Line (Underground)
  - Optional Trench Location
  - Access Road
  - HVDC Terminal Site
  - Existing Substation Fenceline
  - Construction Staging Area
  - Biological Resource Survey Area
- Potentially Impacted Species Habitats**
- Burrowing owl, golden eagle and other raptors
  - CA Tiger Salamander/CA red legged frog
  - California Ridgeway's rail, CA black rail
  - Salt marsh harvest mouse
  - Tri-colored blackbird
  - Vernal pool tadpole shrimp/Vernal pool fairy shrimp
  - Western bumblebee/Crotch's bumblebee/Monarch butterfly
  - Western pond turtle
  - Western snowy plover
- General Features**
- Municipal Boundary
  - Interstate
  - US Route or State Highway
  - Railroad
  - River or Stream
  - Drainage Ditch



Sources: LSPGC 2023; Source: Esri, Maxar, Earthstar Geographics, and the GIS User Community, National Geographic, Esri, Garmin, HERE, UNEP-WCMC, USGS, NASA, ESA, METI, NRCAN, GEBCO, NOAA, increment P Corp.

GIS: Power Central/Alameda/PEA/Bio Figures/Figure 14 Potentially Impacted Species Habitats.mxd 6/28/2024 RCC

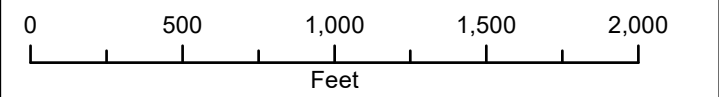
**POWER THE SOUTH BAY PROJECT**  
**Figure 5.4-9: Potentially Impacted Species Habitats**  
**Alameda Co. and Santa Clara Co., CA**



**LEGEND**

- Proposed Project Components**
- Overhead Transmission Structure
  - Baylands to NRS 230 kV AC Transmission Line (Overhead)
  - - - Baylands to NRS 230 kV AC Transmission Line (Underground)
  - Albrae to Baylands 320 kV DC Transmission Line (Overhead)
  - - - Albrae to Baylands 320 kV DC Transmission Line (Underground)
  - Newark to Albrae 230 kV AC Transmission Line (Overhead)
  - - - Newark to Albrae 230 kV AC Transmission Line (Underground)
  - Optional Trench Location
  - Access Road
  - HVDC Terminal Site
  - Existing Substation Fenceline
  - Construction Staging Area
  - Biological Resource Survey Area
- Potentially Impacted Species Habitats**
- Burrowing owl, golden eagle and other raptors
  - CA Tiger Salamander/CA red legged frog
  - California Ridgeway's rail, CA black rail
  - Salt marsh harvest mouse
  - Tri-colored blackbird
  - Vernal pool tadpole shrimp/Vernal pool fairy shrimp
  - Western bumblebee/Crotch's bumblebee/Monarch butterfly
  - Western pond turtle
  - Western snowy plover
- General Features**
- Municipal Boundary
  - Interstate
  - US Route or State Highway
  - Railroad
  - River or Stream
  - Drainage Ditch

GIS Power Centinella\MXD\Newark PEABio Figures\Figure 14 Potentially Impacted Species Habitats.mxd 6/28/2024 RCC



Sources: LSPGC 2023; Source: Esri, Maxar, Earthstar Geographics, and the GIS User Community, National Geographic, Esri, Garmin, HERE, UNEP-WCMC, USGS, NASA, ESA, METI, NRCAN, GEBCO, NOAA, increment P Corp.

**POWER THE SOUTH BAY PROJECT**  
**Figure 5.4-9: Potentially Impacted Species Habitats**  
**Alameda Co. and Santa Clara Co., CA**



**LEGEND**

**Proposed Project Components**

- Overhead Transmission Structure
- Baylands to NRS 230 kV AC Transmission Line (Overhead)
- - - Baylands to NRS 230 kV AC Transmission Line (Underground)
- Albrae to Baylands 320 kV DC Transmission Line (Overhead)
- - - Albrae to Baylands 320 kV DC Transmission Line (Underground)
- Newark to Albrae 230 kV AC Transmission Line (Overhead)
- - - Newark to Albrae 230 kV AC Transmission Line (Underground)
- Optional Trench Location
- Access Road
- HVDC Terminal Site
- Existing Substation Fenceline
- Construction Staging Area
- Biological Resource Survey Area

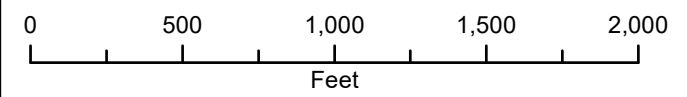
**Potentially Impacted Species Habitats**

- Burrowing owl, golden eagle and other raptors
- CA Tiger Salamander/CA red legged frog
- California Ridgeway's rail, CA black rail
- Salt marsh harvest mouse
- Tri-colored blackbird
- Vernal pool tadpole shrimp/Vernal pool fairy shrimp
- Western bumblebee/Crotch's bumblebee/Monarch butterfly
- Western pond turtle
- Western snowy plover

**General Features**

- Municipal Boundary
- Interstate
- US Route or State Highway
- Railroad
- River or Stream
- Drainage Ditch

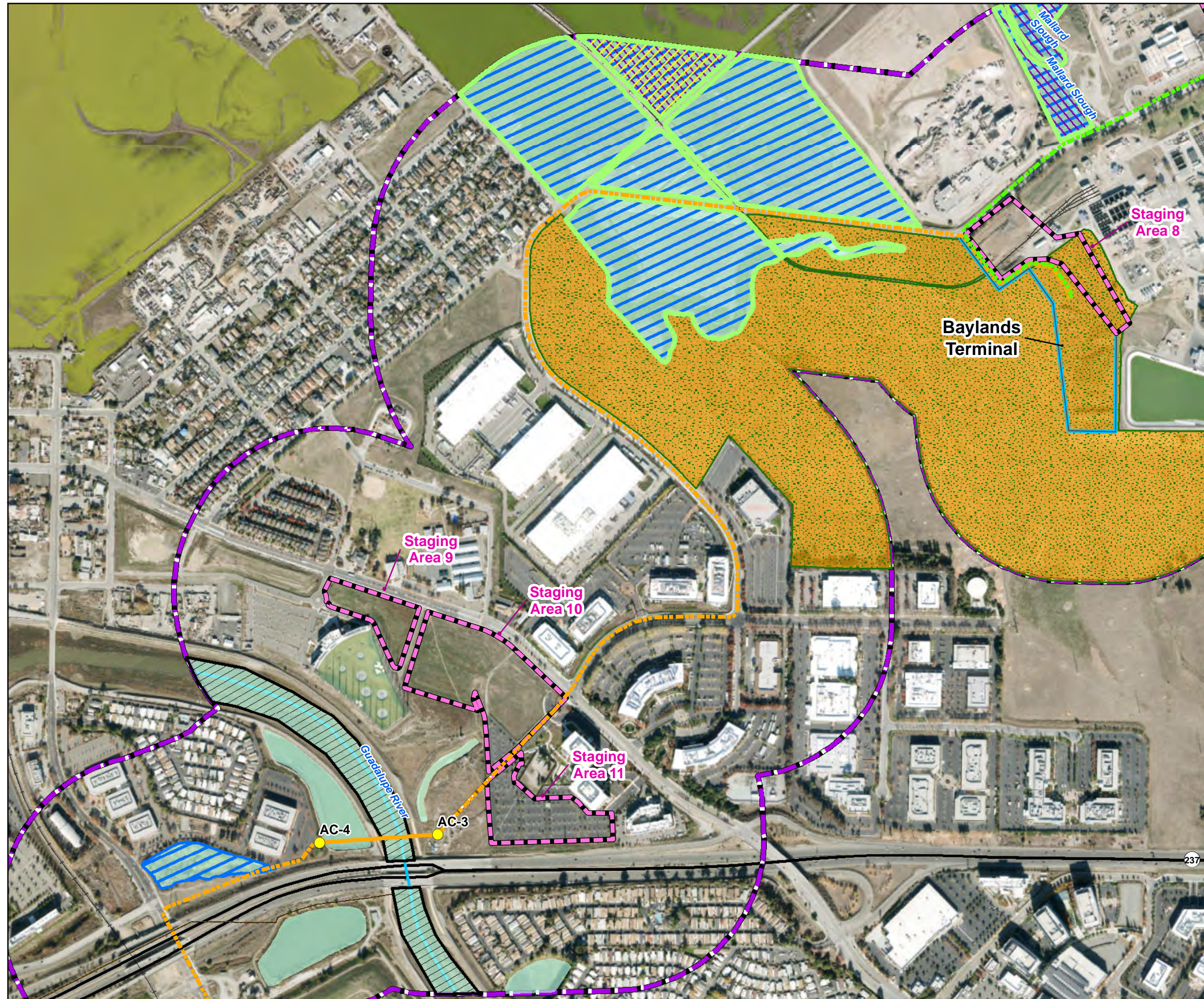
GIS: Power Centinella\MXD\Newark PEABlo Figures\Figure 14 Potentially Impacted Species Habitats.mxd 6/28/2024 RCC



Sources: LSPGC 2023; Source: Esri, Maxar, Earthstar Geographics, and the GIS User Community, National Geographic, Esri, Garmin, HERE, UNEP-WCMC, USGS, NASA, ESA, METI, NRCAN, GEBCO, NOAA, increment P Corp.



**POWER THE SOUTH BAY PROJECT**  
**Figure 5.4-9: Potentially Impacted Species Habitats**  
**Alameda Co. and Santa Clara Co., CA**



**LEGEND**

**Proposed Project Components**

- Overhead Transmission Structure
- Baylands to NRS 230 kV AC Transmission Line (Overhead)
- - - Baylands to NRS 230 kV AC Transmission Line (Underground)
- Albrae to Baylands 320 kV DC Transmission Line (Overhead)
- - - Albrae to Baylands 320 kV DC Transmission Line (Underground)
- Newark to Albrae 230 kV AC Transmission Line (Overhead)
- - - Newark to Albrae 230 kV AC Transmission Line (Underground)
- Optional Trench Location
- Access Road
- HVDC Terminal Site
- Existing Substation Fenceline
- Construction Staging Area
- Biological Resource Survey Area

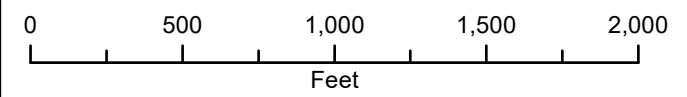
**Potentially Impacted Species Habitats**

- Burrowing owl, golden eagle and other raptors
- CA Tiger Salamander/CA red legged frog
- California Ridgeway's rail, CA black rail
- Salt marsh harvest mouse
- Tri-colored blackbird
- Vernal pool tadpole shrimp/Vernal pool fairy shrimp
- Western bumblebee/Crotch's bumblebee/Monarch butterfly
- Western pond turtle
- Western snowy plover

**General Features**

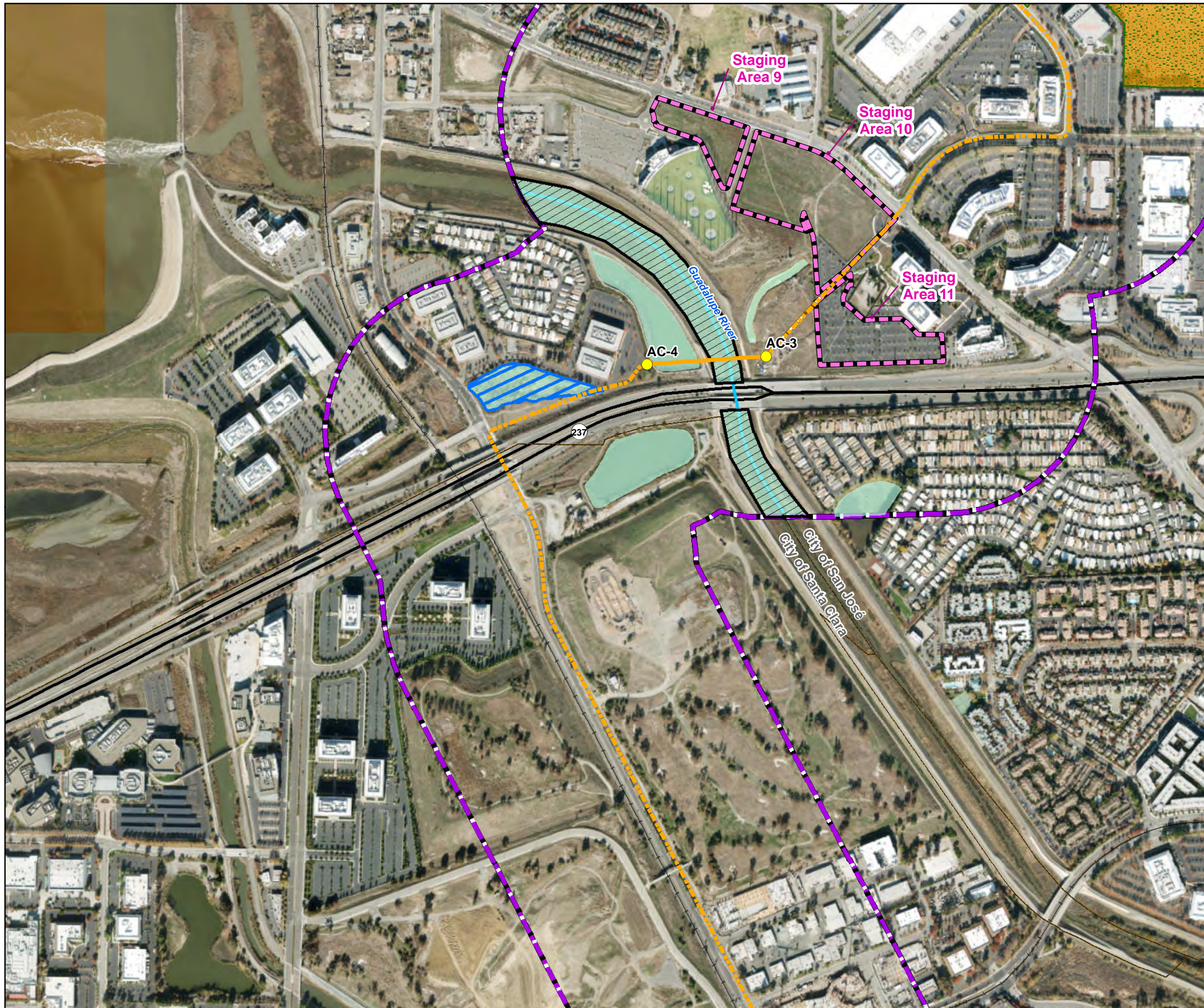
- Municipal Boundary
- Interstate
- US Route or State Highway
- Railroad
- River or Stream
- Drainage Ditch

GIS: Power Central/Alameda/Santa Clara/PEA/Bio Figures/Figure 14 Potentially Impacted Species Habitats.mxd 6/28/2024 RCC



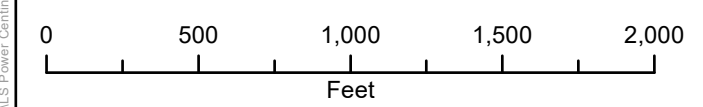
Sources: LSPGC 2023; Source: Esri, Maxar, Earthstar Geographics, and the GIS User Community, National Geographic, Esri, Garmin, HERE, UNEP-WCMC, USGS, NASA, ESA, METI, NRCAN, GEBCO, NOAA, increment P Corp.

**POWER THE SOUTH BAY PROJECT**  
**Figure 5.4-9: Potentially Impacted Species Habitats**  
**Alameda Co. and Santa Clara Co., CA**



**LEGEND**

- Proposed Project Components**
- Overhead Transmission Structure
  - Baylands to NRS 230 kV AC Transmission Line (Overhead)
  - - - Baylands to NRS 230 kV AC Transmission Line (Underground)
  - Albrae to Baylands 320 kV DC Transmission Line (Overhead)
  - - - Albrae to Baylands 320 kV DC Transmission Line (Underground)
  - Newark to Albrae 230 kV AC Transmission Line (Overhead)
  - - - Newark to Albrae 230 kV AC Transmission Line (Underground)
  - Optional Trench Location
  - Access Road
  - HVDC Terminal Site
  - Existing Substation Fenceline
  - Construction Staging Area
  - Biological Resource Survey Area
- Potentially Impacted Species Habitats**
- Burrowing owl, golden eagle and other raptors
  - CA Tiger Salamander/CA red legged frog
  - California Ridgeway's rail, CA black rail
  - Salt marsh harvest mouse
  - Tri-colored blackbird
  - Vernal pool tadpole shrimp/Vernal pool fairy shrimp
  - Western bumblebee/Crotch's bumblebee/Monarch butterfly
  - Western pond turtle
  - Western snowy plover
- General Features**
- Municipal Boundary
  - Interstate
  - US Route or State Highway
  - Railroad
  - River or Stream
  - Drainage Ditch



Sources: LSPGC 2023; Source: Esri, Maxar, Earthstar Geographics, and the GIS User Community, National Geographic, Esri, Garmin, HERE, UNEP-WCMC, USGS, NASA, ESA, METI, NRCAN, GEBCO, NOAA, increment P Corp.

GIS: Power Centinella\MXD\Newark PEABlo Figures\Figure 14 Potentially Impacted Species Habitats.mxd 6/28/2024 RCC

**POWER THE SOUTH BAY PROJECT**  
**Figure 5.4-9: Potentially Impacted Species Habitats**  
**Alameda Co. and Santa Clara Co., CA**



**LEGEND**

**Proposed Project Components**

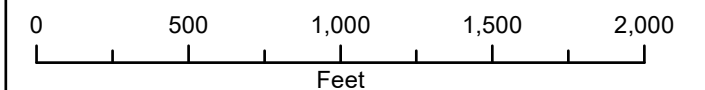
- Overhead Transmission Structure
- Baylands to NRS 230 kV AC Transmission Line (Overhead)
- - - Baylands to NRS 230 kV AC Transmission Line (Underground)
- Albrae to Baylands 320 kV DC Transmission Line (Overhead)
- - - Albrae to Baylands 320 kV DC Transmission Line (Underground)
- Newark to Albrae 230 kV AC Transmission Line (Overhead)
- - - Newark to Albrae 230 kV AC Transmission Line (Underground)
- Optional Trench Location
- Access Road
- ▭ HVDC Terminal Site
- ▭ Existing Substation Fence Line
- ▭ Construction Staging Area
- ▭ Biological Resource Survey Area

**Potentially Impacted Species Habitats**

- ▭ Burrowing owl, golden eagle and other raptors
- ▭ CA Tiger Salamander/CA red legged frog
- ▭ California Ridgeway's rail, CA black rail
- ▭ Salt marsh harvest mouse
- ▭ Tri-colored blackbird
- ▭ Vernal pool tadpole shrimp/Vernal pool fairy shrimp
- ▭ Western bumblebee/Crotch's bumblebee/Monarch butterfly
- ▭ Western pond turtle
- ▭ Western snowy plover

**General Features**

- ▭ Municipal Boundary
- Interstate
- US Route or State Highway
- Railroad
- River or Stream
- Drainage Ditch



Sources: LSPGC 2023; Source: Esri, Maxar, Earthstar Geographics, and the GIS User Community, National Geographic, Esri, Garmin, HERE, UNEP-WCMC, USGS, NASA, ESA, METI, NRCAN, GEBCO, NOAA, increment P Corp.

GIS: Power Central/MXD/Newark PEABio Figures/Figure 14 Potentially Impacted Species Habitats.mxd 6/28/2024 RCC