

Confidential--Protected Materials Pursuant to
California Public Utilities Commission Decisions and
Applicable Law. Public Disclosure Restricted

Archaeological Survey of Three Alternate Sites for the Proposed Kimball Substation, Riverside and San Bernardino Counties, California

Katherine H. Pollock and Michael K. Lerch

Submitted to:

Southern California Edison Company
2244 Walnut Grove Avenue
Rosemead, CA 91770

SRI CWA-11



Technical Report 05-64

Statistical Research, Inc.
P.O. Box 390
Redlands, CA 92373-0123

August 2005

Confidential--Protected Materials Pursuant to
California Public Utilities Commission Decisions and
Applicable Law. Public Disclosure Restricted

Project Location and Description

Southern California Edison (SCE) proposes to build the Kimball Substation on the Kropp 12kV transmission line. There are three alternate site locations for the substation: Preferred Site 5C, Alternate Site 2B, and Alternate Site 3. The Preferred Site 5C and Alternate Site 3 are in San Bernardino County, California, and Alternate Site 2B is in Riverside County, California. SCE property records indicate that these proposed locations are located on private property in the valley floor near Chino, California (Table 1, Figure 1). Individual substation locations are shown on Figure 2. The substation construction is subject to compliance with the California Environmental Quality Act (CEQA).

Table 1. Locational Information for Kimball Substation Alternate

Parcel No.	Circuit	Ownership	USGS 7.5' Quad	Projected Section	Township	Range	Map Index	Figure No.
Preferred Site 5C	Kropp	Private	Corona North	28	T2S	R5W	1	2
Alternate Site 2B	Kropp	Private	Corona North	27	T2S	R5W	1	2
Alternate Site 3	Kropp	Private	Corona North	28	T2S	R5W	1	2

Methods of Data Collection

Records searches were conducted by Katherine Pollock, M.A., RPA, at the California Historical Resources Information System (CHRIS) San Bernardino County Archaeological Information Center (AIC), San Bernardino County Museum in Redlands, and the CHRIS Eastern Information Center, Department of Anthropology, University of California, Riverside, on July 27, 2005. The records search covered an area of one-mile radius around each proposed substation location and included a review of previously recorded cultural resources and surveyed areas; historical maps and archival documents; and local, state, and federal lists of recognized archaeological and historical resources.

The area of potential effects (APE) for this project was defined as a two-acre parcel for each substation location. Archaeological survey of the substation locations was conducted on July 28, 2005, by Katherine Pollock. The substations are located in open agricultural environments, and thus vegetation is minimal and ground visibility during the field surveys was excellent. Archaeological survey transects within the APE were spaced approximately 15 m apart for Preferred Site 5C and Alternate Site 2B. Because there was no access for Alternate Site 3, the field survey was limited to viewing the parcel from the driveway along the eastern edge and a visual scan of its interior. The location of each substation parcel was mapped with a hand-held GPS unit, and photographs were taken of each pole and its surroundings.

Study Results

The records search indicated no known cultural resources within the APE for any of the parcels, and no prehistoric or historical-period cultural resources were identified during the archaeological field survey. Given the locations of the substation parcels within agricultural environments, it is unlikely that buried cultural deposits are present.

Assessment of Effects

Construction on any of the three Kimball substation alternate parcels will not have an effect on historical resources listed in or eligible for listing in the California Register of Historical Resources.

Recommendations

Because no cultural resources were identified within the project APE of any of the parcels, no recommendations for mitigation are necessary. In the event that unanticipated discoveries are made during the course of project implementation, it is recommended that work be temporarily suspended and an SCE archaeologist be contacted to evaluate the significance of the resources. If human remains are encountered during construction, work in the affected area must be halted immediately and the County Coroner must be notified pursuant to State Health and Safety Code Section 7050.5.

Confidential--Protected Materials Pursuant to
California Public Utilities Commission Decisions and
Applicable Law. Public Disclosure Restricted

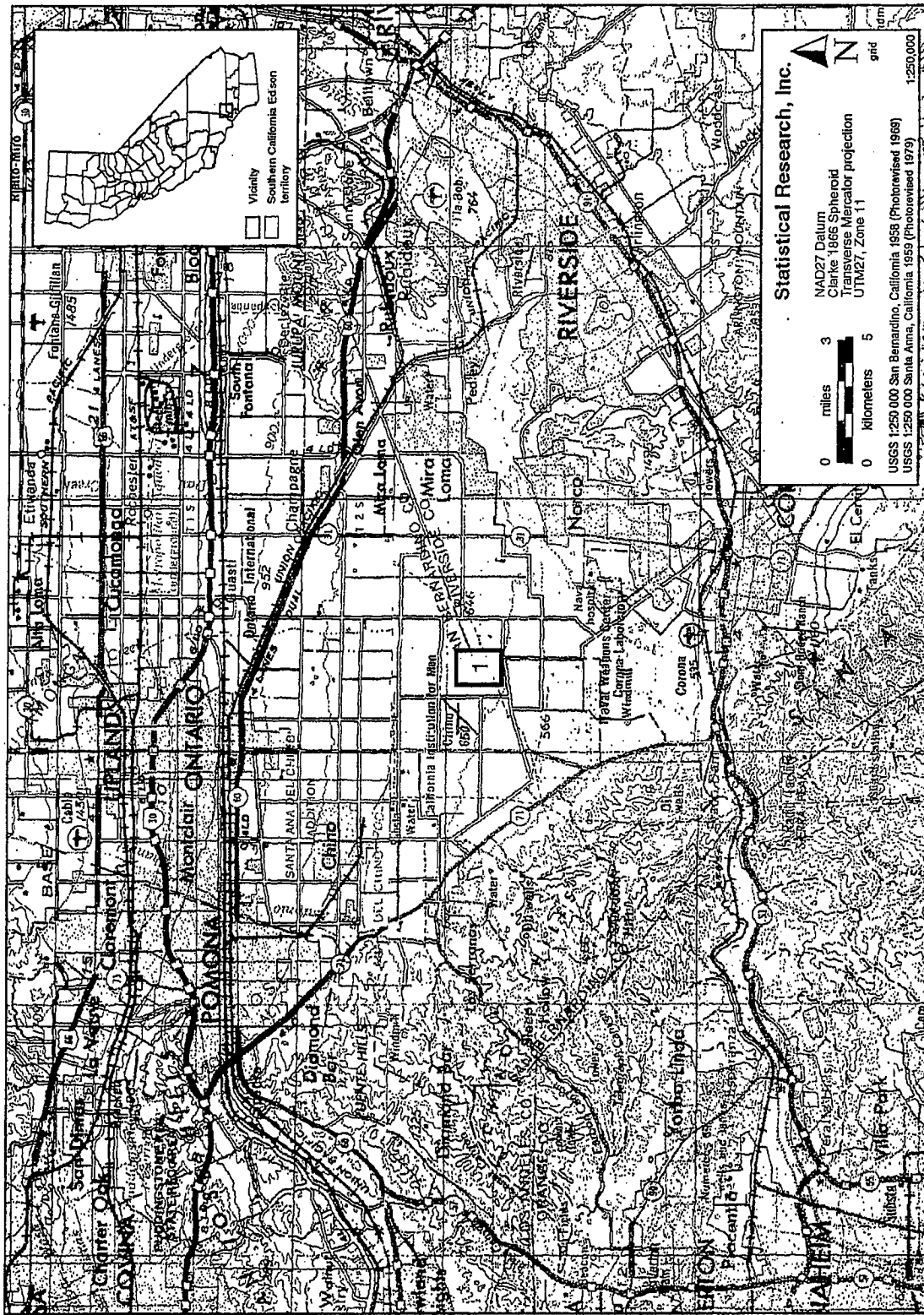


Figure 1. Map showing vicinity of project area.

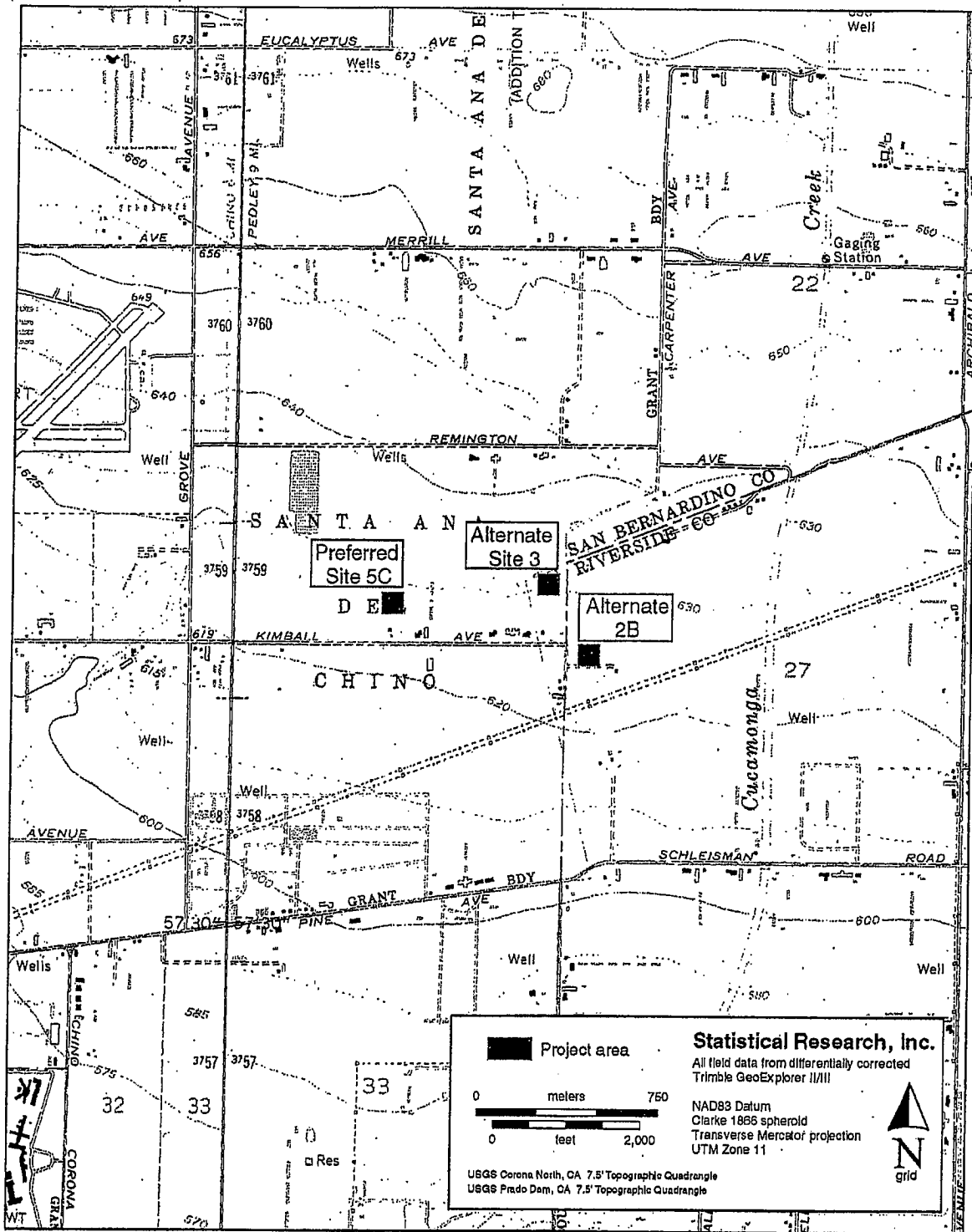


Figure 2. Map showing location of Kimball substation Preferred Site 5C, Alternate Site 2B, and Alternate Site 3.

